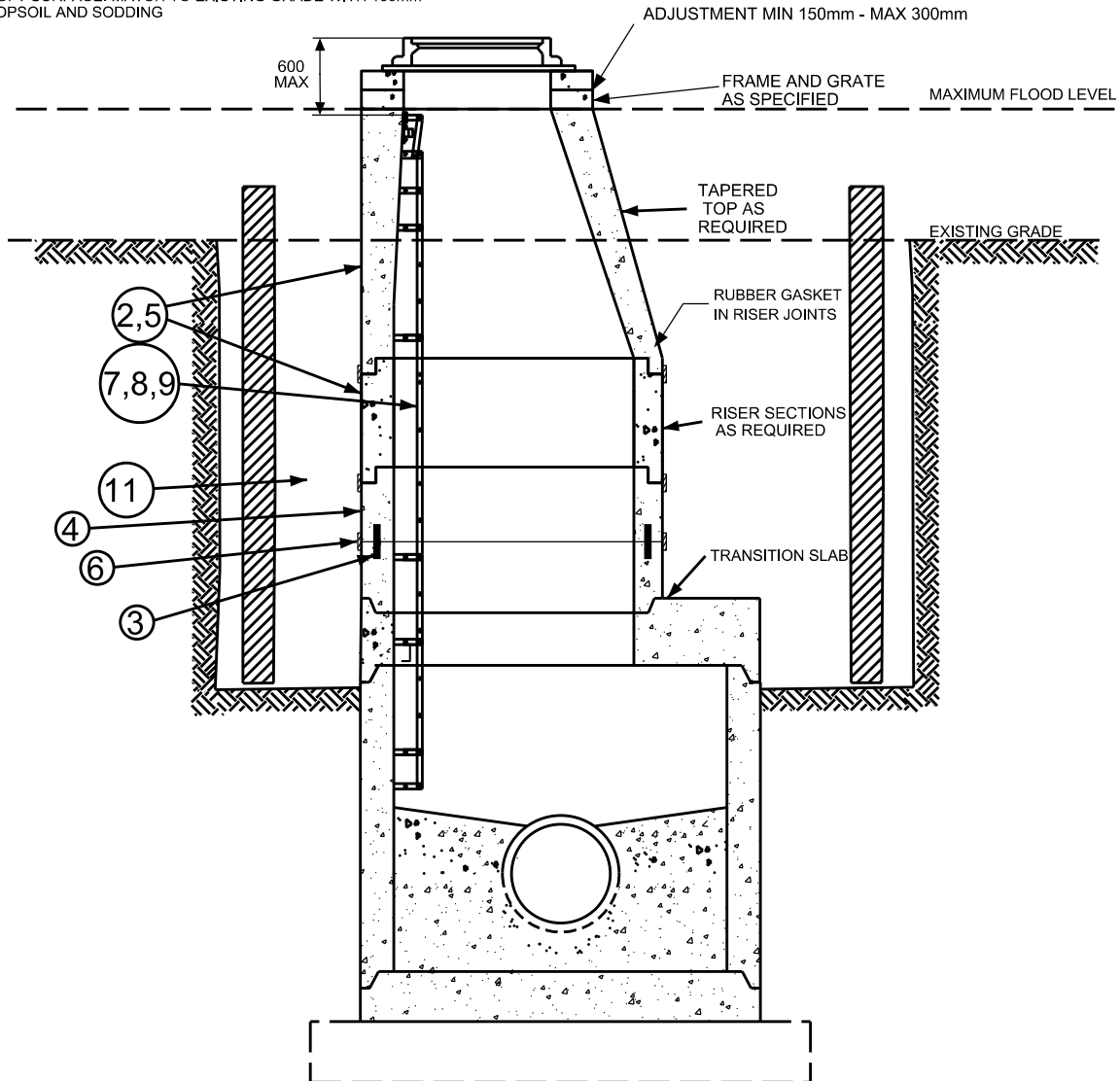


ROAD BASE/HARD SURFACE: MATCH TO EXISTING GRADE
 SOFT SURFACE: MATCH TO EXISTING GRADE WITH 150mm
 TOPSOIL AND SODDING



NOTES:

1. THIS DRAWING TO BE USED WITH STANDARD DRAWING T-1120.07-1.
2. PRECAST CONCRETE COMPONENTS ACCORDING TO OPSD STANDARDS STATED SELECTED STANDARD DRAWINGS FOR MAINTENANCE HOLES. RISERS NOT TO BE INSTALLED ON PRECAST COMPONENTS AS FRP LADDERS AND LANDINGS TO BE INSTALLED PRIOR TO COMMISSIONING.
3. REPLACE DAMAGED BRICKS AND CAREFULLY DRILL HOLES TO INSTALL 300mm DOWELS AT 380mm SPACING AND SECURE WITH EPOXY OR SUITABLE BONDING AGENT.
4. INSTALL POURED IN PLACE CHIMNEY TRANSITION PIECE
5. INSTALL RISER COMPONENTS PRECAST COMPONENTS REQUIRED TO RAISE MAINTENANCE HOLE FRAME AND COVER ABOVE MAXIMUM HIGH FLOOD LEVEL ELEVATION.
6. WATERPROOF MEMBRANE BELOW GRADE TO BE "MEL-ROL" BY W.R. MEADOWS OF MILTON, ONTARIO OR APPROVED EQUIVALENT TO BE APPLIED IN 300 mm MINIMUM WIDTH TO ALL EXPOSED MAINTENANCE HOLE STRUCTURE JOINTS
7. INSTALL FRP LADDER, REMOVABLE FRP LADDER RUNG AND ACCESS HANDLE BRACKET AND FRP SAFETY LADDER (IF APPLICABLE). REFER TO DRAWING T-1120.05-1, T-1120.05-2 AND T-1120.05-3.
8. STRUCTURES EXCEEDING 4.5 m DEPTH TO INCLUDE SAFETY PLATFORM EVERY 4.5m ACCORDING TO OPSD 404.02 EVEN IF EXISTING MAINTENANCE HOLE DOES NOT. PLATFORM SPACING IN ACCORDANCE WITH STANDARD DRAWING T-1120.05-2, NOTE 2.
9. FIRST STEP TO BE 75 mm TO 450 mm BELOW FRAME. LAST STEP TO END 400 mm OR LESS FROM BENCHING.
10. 150 mm OF COMPACTED GRANULAR A OR UNSHRINKABLE FILL TO BE PLACED ALL AROUND THE MAINTENANCE HOLE.
11. ALL DIMENSIONS ARE NOMINAL.

All dimensions are in millimetres unless otherwise shown.

ENGINEERING & CONSTRUCTION SERVICES STANDARD DRAWING

REV 0

SEP 2019



**INSTALLATION DETAIL - RAISING A
 MAINTENANCE HOLE WITHIN A FLOOD PLAIN**

T-1120.07-2

NTS

SHEET 1