

David Crombie Park

Revitalization Design

Workshop #3 : Preferred Concept Plan

September 26, 2019



Land Acknowledgement for Toronto

We acknowledge the land we are meeting on is the traditional territory of many nations including the Mississaugas of the Credit, the Anishnabeg, the Chippewa, the Haudenosaunee and the Wendat peoples, and is now home to many diverse First Nations, Inuit and Métis peoples.

We also acknowledge that Toronto is covered by Treaty 13 with the Mississaugas of the Credit.

Today, this meeting place is still the home to many Indigenous people from across Turtle Island and we are grateful to have the opportunity to work on this land.

Overview of Work Program

Stage 1

**Background Review,
Site Inventory &
Analysis**

Fall 2018

Stage 2

**Revitalization Design
Concept Options**

Spring 2019

Stage 3

Final Park

**Revitalization Design &
Implementation Plan
Recommendations**

Fall 2019

Stage 4

Master Plan

Winter 2019

Consultation Summary

An aerial photograph of an industrial city, likely Detroit, showing a dense network of streets, large industrial buildings, and a multi-lane highway on the right. The text 'Consultation Summary' is overlaid in large white font. In the bottom left, a sign for 'NEW INDIAN MARKET' is visible. In the top left, a sign for 'Labatt's' is visible. A small number '4' is in the bottom right corner.

Over the past year, we have shared ideas regularly, used multiple ways to hear your thoughts and were available to talk anytime. Kept it simple with...



Lots and lots of conversations

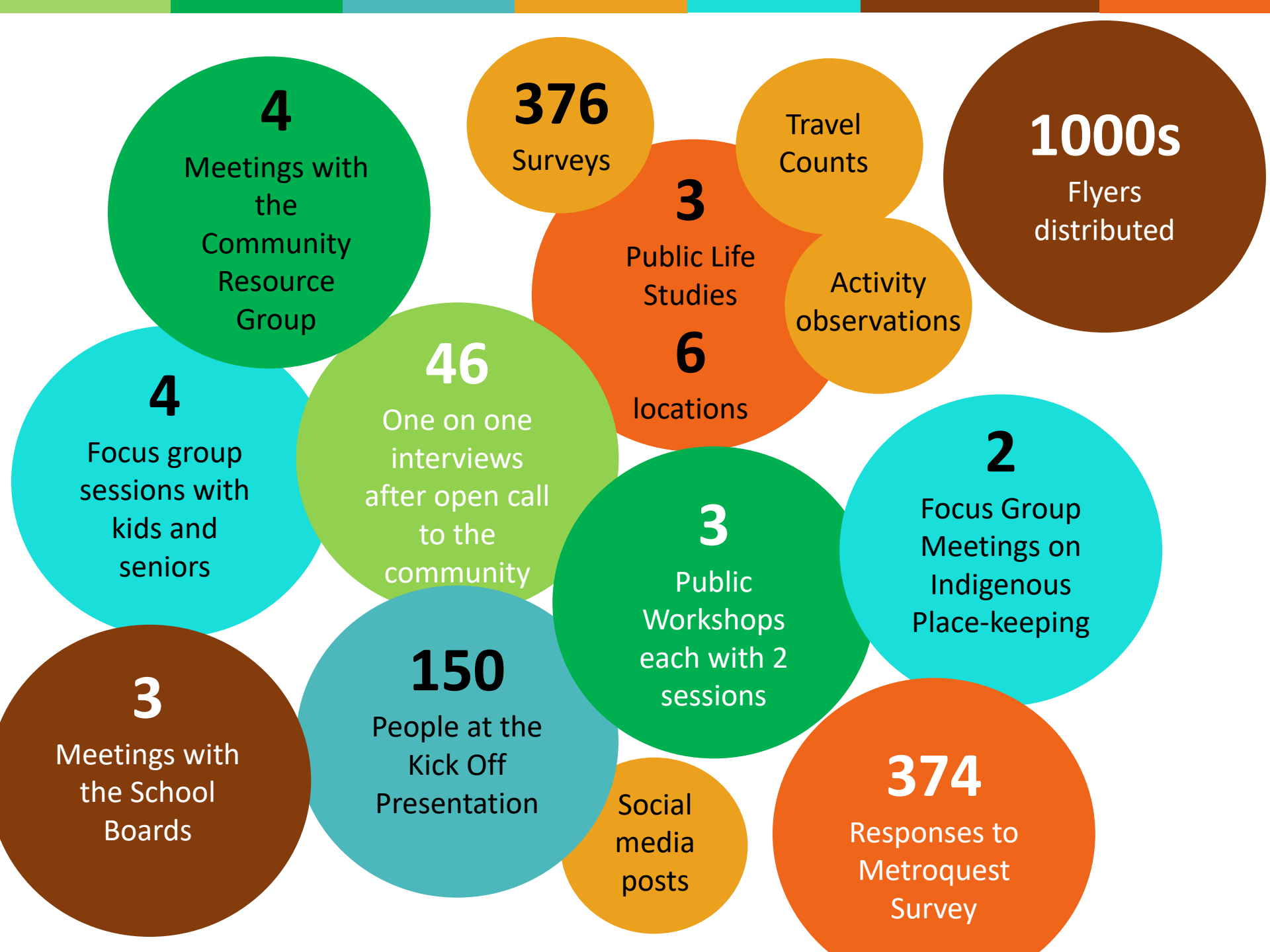


On-line survey



On-site survey and observations





4

Meetings with the Community Resource Group

376

Surveys

3

Public Life Studies

Travel Counts

1000s

Flyers distributed

Activity observations

6

locations

46

One on one interviews after open call to the community

4

Focus group sessions with kids and seniors

3

Public Workshops each with 2 sessions

2

Focus Group Meetings on Indigenous Place-keeping

3

Meetings with the School Boards

150

People at the Kick Off Presentation

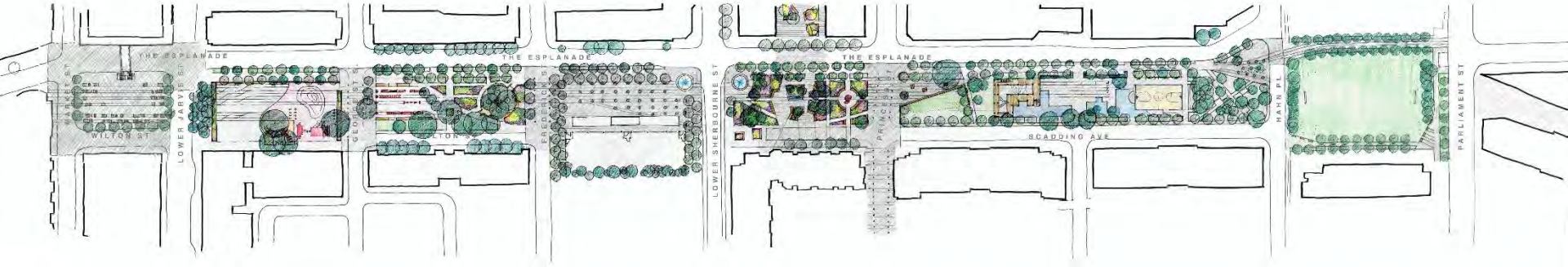
374

Responses to Metroquest Survey

Social media posts

Our last public workshop: Options discussed in April

1. Heritage and Story Telling



2. The Promenade and 7 Parks



3. Green Walks and Gardens



Survey Questions from 3 Options

Workshop 2 (April 2, 2019)

Block 3

Promenade: George to Frederick	Thumbs Up	Thumbs Down
Water jets play area in circular area	39	1
Curvilinear pathways	37	0
Small play area with swings	37	1
Maintain the "circle garden" concrete wall but with boardwalk pathway	25	8

Heritage: George to Frederick	Thumbs Up	Thumbs Down
Lines in road paving and park refer to former rail-ways	32	8
Playground with linear play equipment	26	12
Community horticultural areas	29	3
Maintain the "circle garden" concrete wall and add new wood deck surface	22	11

Gardens: George to Frederick	Thumbs Up	Thumbs Down
Water play outdoor room and playground outdoor room	43	1
Removal of the "circle garden" concrete wall but reference it with circular pathway geometry	40	4

Online Survey (April-May, 2019)

2B
Series of small, programmable pavilions, including a public washroom



2C
Dedicated fenced dogs off leash area



2D
Series of garden beds/ horticultural areas with seating and walkways



2E
Water play area and horticultural display beds with seating and walkways



3A
Maintain grassy berm



3B
Playground equipment set "in the trees"



69 Questions

Survey Results from 3 Options

- Combined results from workshop (**100+ participants**) and online surveys (**374 respondents**)
- Provides general themes and impressions
- Average approval rating per question was 80% = most design ideas well received



- “Negative” responses: only 3 questions were less than 50% approval



- “Luke warm” responses up to 73% approval



- “High approval” responses between 90% and 95% approval



- “Very high approval” responses above 95% approval

Survey Results from 3 Options

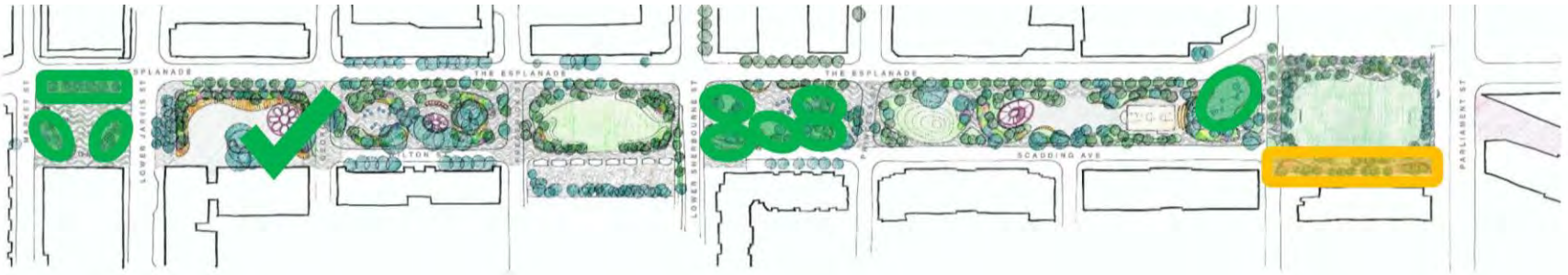
1. Heritage and Story Telling



2. The Promenade and 7 Parks



3. Green Walks and Gardens



Survey Preferences from 3 Options

- ✓ **Closing Wilton Street** (south of St. Lawrence Market) to make a larger park block with lush planting around the edges
- ✓ A decorative **fence** separating DAS/St. Mike's school yard and the promenade; **vertical play structures**
- ✓ **Horticultural** areas and **curvilinear paths**
- ✓ **Dedicated dog off-leash** area
- ✓ **Water play** areas
- ✓ Improving the **crossing at Market Lane school**
- ✓ Maintaining the **grassy knoll**
- ✓ Maintaining the **soccer field** in Parliament Square Park

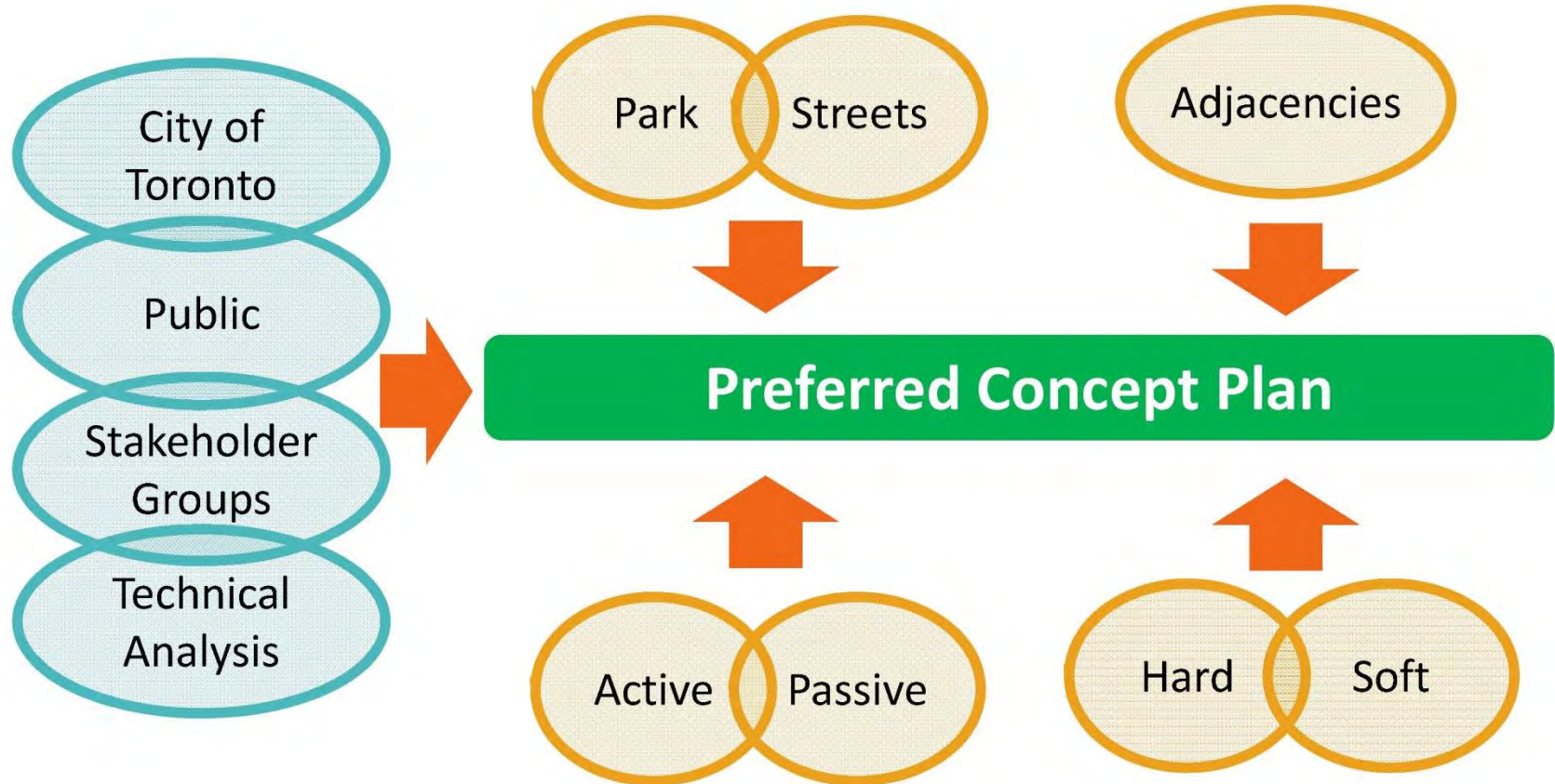
School Board Preferences

- ✓ Provide **varied experiences** in the school yard designs that support a wide range of types of play
 - divide the school yards into outdoor rooms that provide active, passive, and imaginative play opportunities
 - Trees in the school yards
- ✓ Provide play experiences geared to the **full range of ages**
 - playground equipment that has **graduated challenges** for different age groups, and incorporates both simple/natural materials (logs, rocks, rope) and designed equipment
- ✓ Focus on materials that are **durable and flexible**

Preferred Concept Plan



Preferred Direction: **Balance**



The mobilizing vision revitalizes David Crombie Park to be a place:

- that welcomes everyone
- is designed for people with all abilities from the very young to the elderly
- is imprinted with cultural and historic references that reflect the diversity of the community
- is a playground for the community, a gathering space, a place of respite and joy
- is beautiful and resilient
- meets the highest standards of sustainable design

That does justice to the remarkable legacy of David Crombie and the precedent setting neighbourhood that surrounds the park.



Seven Distinct Urban Rooms



Unified by

Water

Landscape

Heritage

Walks and Gardens

Community Activities & Animation

Preferred Direction



Block 1: Aerial View (existing)



Block 1: Aerial View (preferred plan)



Block 1



Block 1: Conceptual rendering



Block 1: Cross Section



St. Lawrence Market

The Esplanade

Current location of Wilton Street
now proposed as part of park

Block 2: Aerial View (existing)



Block 2: Aerial View (preferred plan)



Block 2



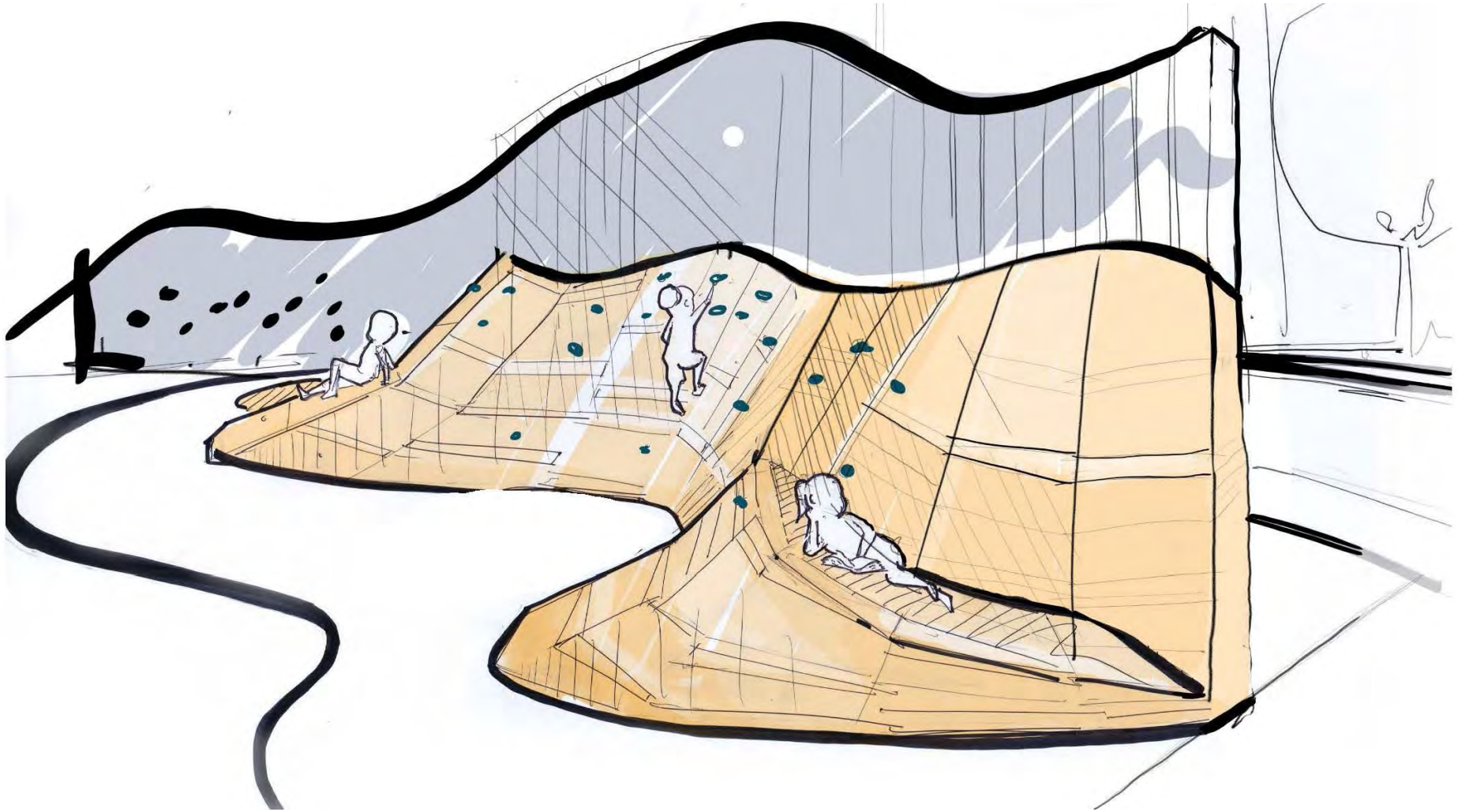
School yards – surface treatment precedent



Playground elements precedent



Playground elements concept



Playground elements concept



Cedar logs and loose parts play @
Ralph Klein Park, Calgary // Earthscape



YMCA - St. Marguerite's, Oakville, ON // Earthscape



Huron Natural Area, Kitchener, ON // Earthscape

Playground elements concept

Dugout @ Alan Vandal
Dugout canoe, dated
from the 15th century //
Canadian Museum of
History



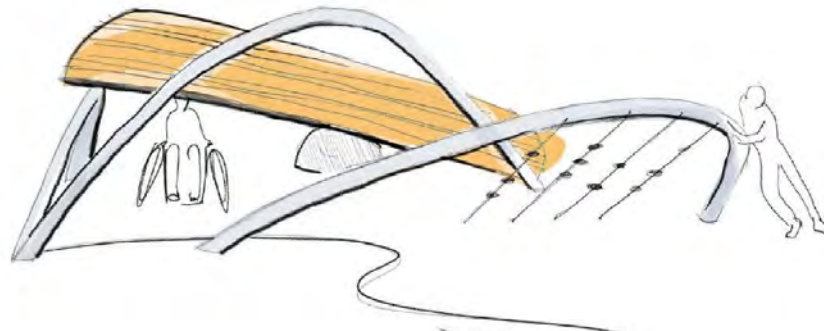
The 19th century
photo: Archaeological Services Inc.



William Connell City Wide Park
Hamilton, ON // Earthscape



Confederation Park, Calgary, AB
// Earthscape



Block 2: Cross Section



Block 3: Aerial View (existing)



Block 3: Aerial View (preferred plan)



Block 3



Garden rooms precedent



Activities for youth, adults and seniors

go the
great outdoor
gym company



Block 3: Lawn and Splash Pad



Block 3: Cross Section



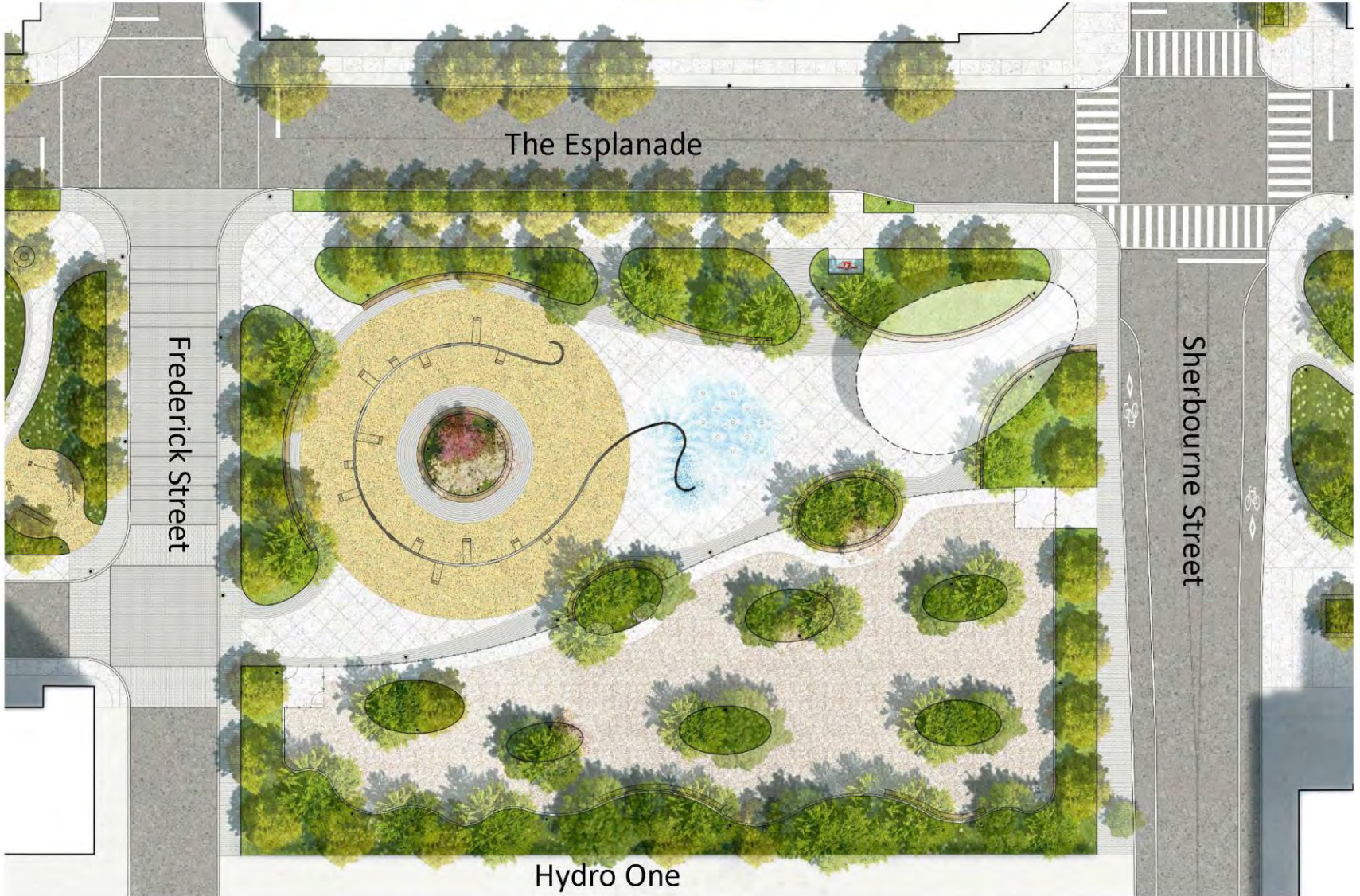
Block 4: Aerial View (existing)



Block 4: Aerial View (preferred plan)



Block 4



Social swing precedent



Social swing precedents



Social swing precedent



Dog off-leash area precedent (Allan Gardens)



Pavilion precedent



Awen Indigenous Gathering Place, Collingwood

Block 4: Conceptual rendering



Block 4: Cross Section



Block 5: Aerial View (existing)



Block 5: Aerial View (preferred plan)



Block 5



Block 5: Conceptual rendering



Block 5: Cross Section



Block 6: Aerial View (existing)



Block 6: Aerial View (preferred plan)



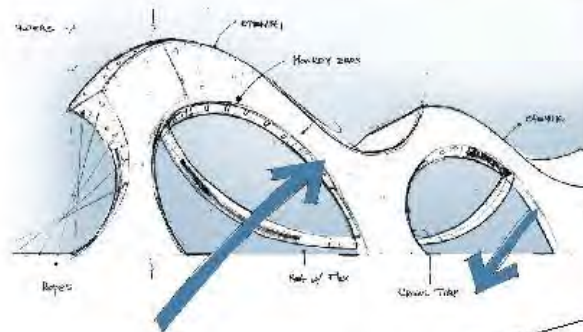
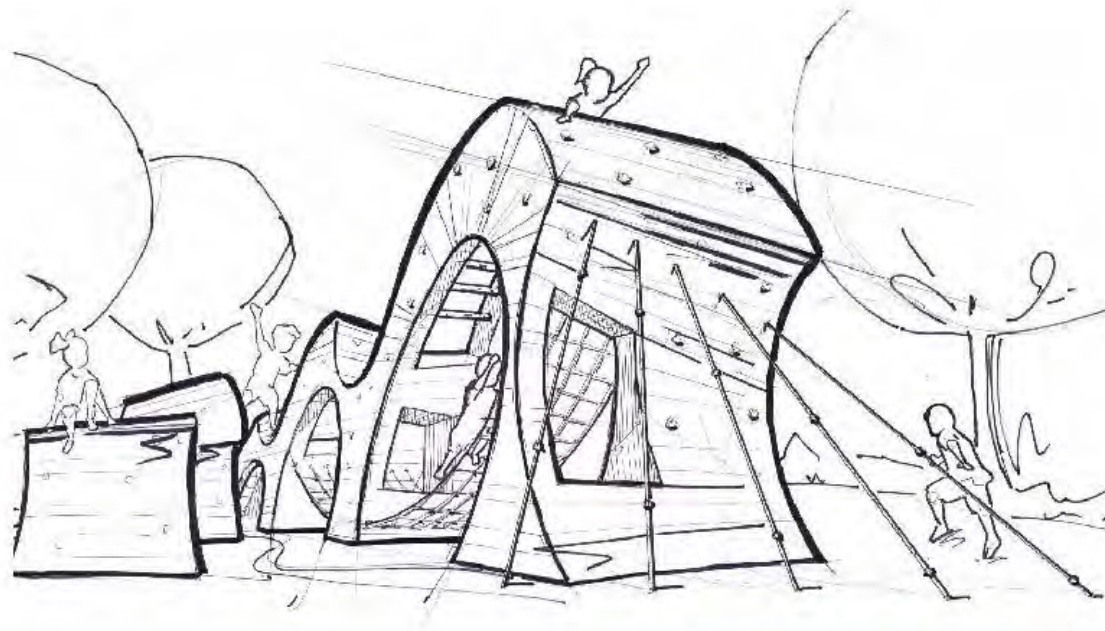
Block 6



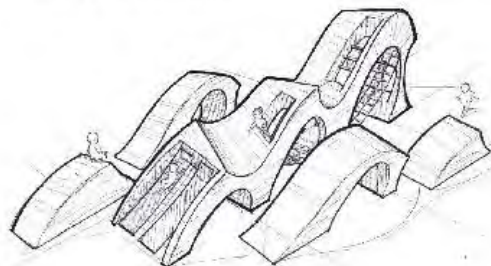
Block 6: Conceptual rendering



Playground

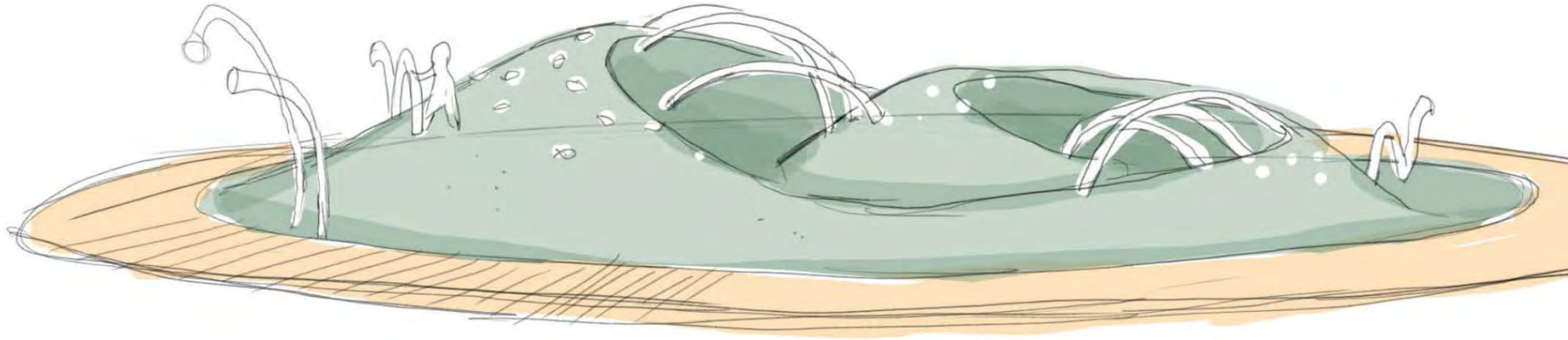


Ensure lines of sight are maintained.
Increase visibility by increasing gaps
between cladding and introducing
materials such as steel mesh



St. James Park, Toronto ON
#Earthscape

Playground elements concept



Water Elements precedent



Block 6: fountain at Hahn Place



Block 6: Cross Section



Block 7: Aerial View (existing)



Block 7: Aerial View (preferred plan)



First Parliament Site Future Park

Google

Block 7



Trail precedents



Temporary park precedents



Block 7: Cross Section



David Crombie Park Revitalization - **Seniors**

More seating

- In passive/contemplative areas
- Adjacent to active play/youth areas
- Along paths
- In shade

Accessible seating, comfortable, with a high back and arm rests

Accessible picnic tables

Accessible paths and widened sidewalks

Flat, grassy, flexible areas

Better access to passive, green, horticultural areas than existing

David Crombie Park Revitalization-Young People

School yards are more diverse

- Inspiring equipment, graduated play, accessible play
- Natural materials for imaginative play; hard and soft areas
- Zones for different age groups
- Plenty of seating for kids and caregivers
- More shade

More water play opportunities

Central gathering area has amenities for all ages

Enhanced crossings at road intersections

Circuit of fitness equipment

David Crombie Park Revitalization- **Indigenous Place-keeping**

A variety of circular forms for Indigenous story circle large, medium and small gatherings

Celestial observatory and medicine wheel has stone markers at the cardinal points that mark equinoxes and opportunity to mark constellations with art. Small circular garden adjacent for intimate ceremonies

Public art opportunities:

- Moccasin project, Wampum Belts (paving ideas)
- Horticultural area, water feature (sculptural ideas)
- Opportunities for native vegetation, ceremonial markers (e.g. black oak tree marking ceremony)

Ongoing relationship building through the design process

David Crombie Park Revitalization- Tree Canopy

- Growth Rate Stratification - To punch up canopy quickly, and minimize effect of canopy loss
- Canopy Trees + Ornamental Specimens - Balance of Heights for Layering and Variety
- Areas of clustered plantings, areas of openness, parades of rhythmic trees along corridors

Permanent Climax Crop



Zelkova serrata 'Green Vase'
Japanese Zelkova



Phellodendron amurense
Amur Corktree



Quercus bicolor
Swamp White Oak



Celtis occidentalis
Common Hackberry



Ginkgo biloba
Maidenhair Tree



Ostrya virginiana
Ironwood



Quercus rubra
Red Oak



Tilia americana
American Basswood



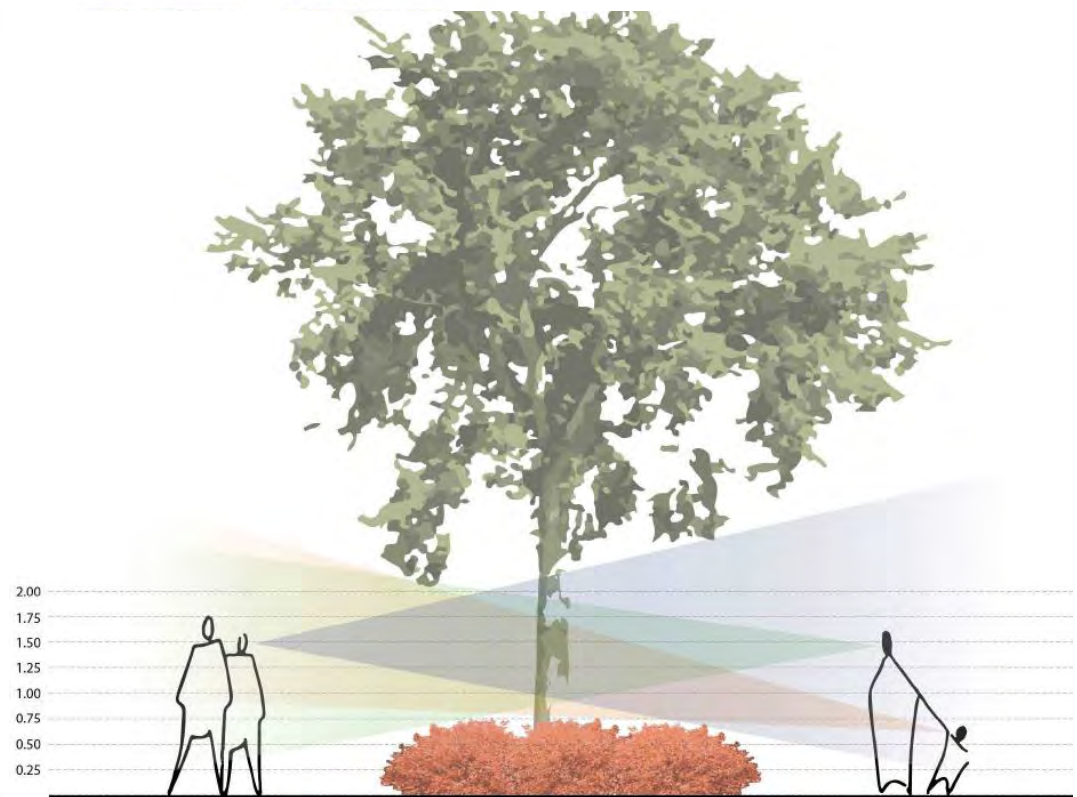
Quercus robur
English Oak



Quercus muehlenbergii
Chinkapin Oak



Platanus x acerifolia
London Planetree



David Crombie Park Revitalization- Gardens

- **Four Seasons** - Fall Colour will be diverse and rich; winter character and form will be considered
- **Aesthetically-Rich** - Colour-themed beds; foliar textural variety; a variety of forms
- **Layers and Depths** - Gardens must seem ample and impactful (greater horticultural presence)



Cercis canadensis
Eastern Redbud (9m)



Acer griseum
Paperbark Maple (8m)



Salix lucida
Shining Willow (5.5m)



Chionanthus virginicus
Fringetree (5m)



Acer ginnala
Amur Maple (4m)



Viburnum lentana
Wayfaring Tree (3m)



Aesculus parviflora
Bottlebrush Buckeye (2.5m)



Cornus stolonifera
Red Osier Dogwood (2m)



Carpinus caroliniana
Musclewood (7m)



Viburnum lentago
Nannyberry (6m)



Hamamelis virginiana
Witch Hazel (5m)



Cornus alternifolia
Pagoda Dogwood (5m)



Amelanchier arborea
Downy Serviceberry (3m)



Hamamelis x intermedia Arnold's
promise / Witch Hazel (2.5m)



Hamamelis vernalis
Vernal Witch Hazel (2.5m)



Cephalanthus occidentalis /
Buttonbush (2m)



Prunus virginiana
Chokecherry (7m)



Amelanchier canadensis
Juneberry (5.5m)



Syringa reticulata
Japanese Silk Lilac (5m)



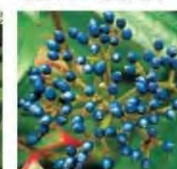
Acer tataricum
Tatarian Maple (4.5m)



Cornus racemosa
Grey Dogwood (3m)



Cornus amomum
Silky Dogwood (2.5m)



Viburnum dentatum
Arrowwood (2m)



Aronia arbutifolia 'Brilliant-
sima' / Red chokeberry (2m)



Cornus mas



Salix discolor



Salix bebbiana



Crataegus laevigata



Physocarpus opulifolius



Sambucus canadensis



Viburnum plicatum 'tomentosum'



Sciraea alba

David Crombie Park Revitalization - **Benefits**

Ecological Benefits

- **Bioamplification Principles** - Food source of juvenile, adult, and breeding specimens present
- **Flowers + Pollen Sources** - Staggered flowering cycles so pollen sources are present throughout growing season providing habitat for birds, insects and other organisms
- **Landscape Resilience** - Not just species-diversity, but genera- and family-diversity as well

Community Benefit

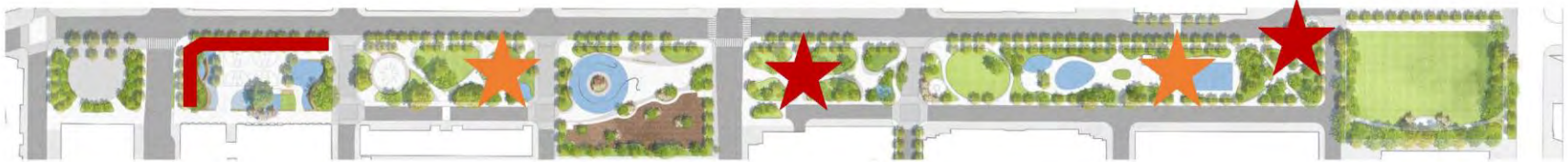
- Education – learning landscape – ecological principles and indigenous heritage
- Exposure to natural processes for residents, especially children

David Crombie Park Revitalization- **Public Art Strategy**

- Recommended locations to work with artists to create site-specific artworks for the park as part of the first phase of implementation
- Flexible over time for additional commissioned and community artworks

Community Art
Opportunities

Water feature
at end of
promenade

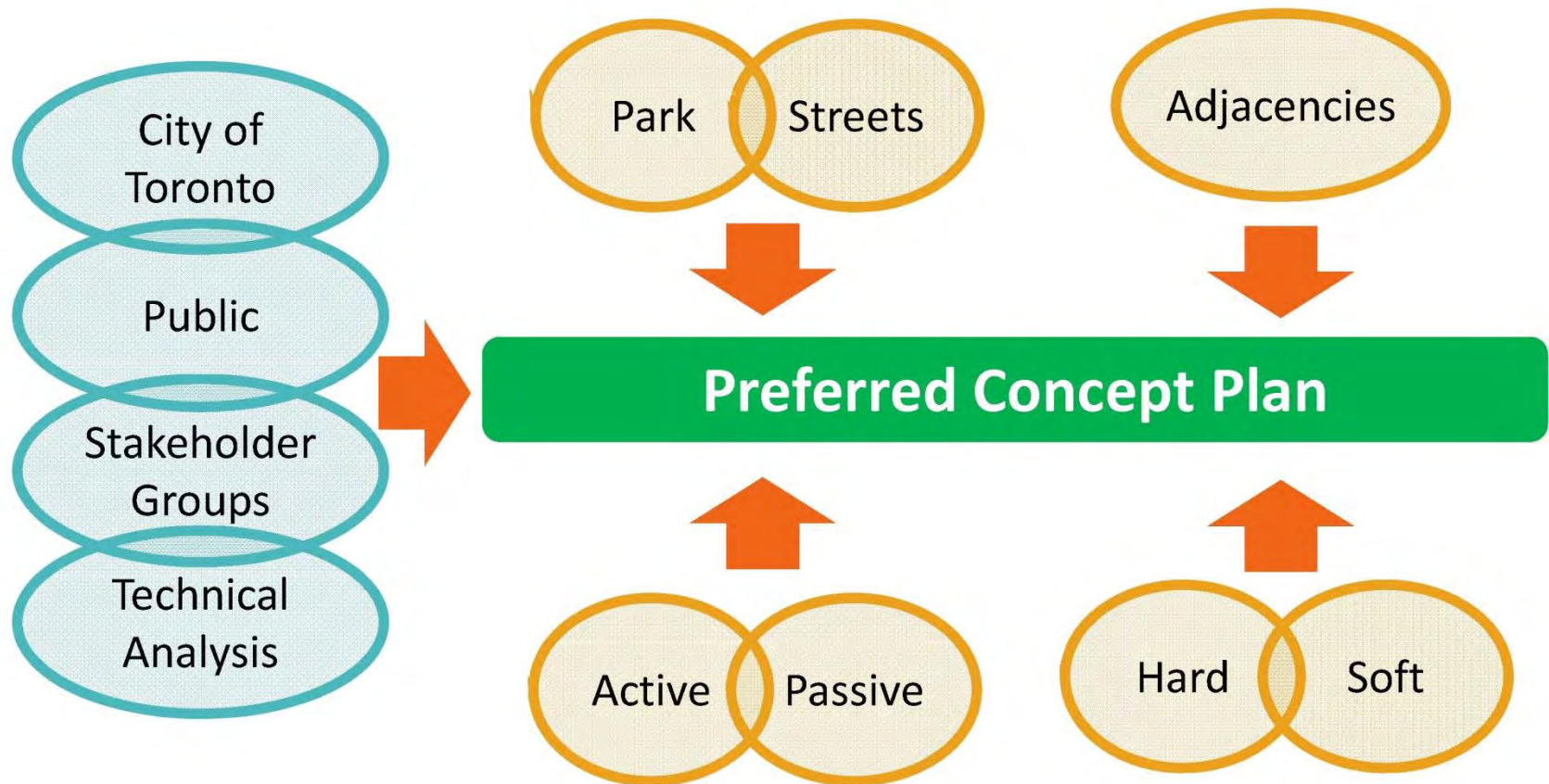


Art fence along
school yard

Garden Block
Central Sculpture

Basketball Court
Mural (existing)

Preferred Direction: **Balance**



David Crombie Park Revitalization



230 new trees

600 metres of benches

14 ecological garden beds

10 community programming spaces from
50 to 800 square metres, hard and soft
surfaces

8 new play structures

Uniform night light level in all blocks

The mobilizing vision revitalizes David Crombie Park to be a place:

- that welcomes everyone
- is designed for people with all abilities from the very young to the elderly
- is imprinted with cultural and historic references that reflect the diversity of the community
- is a playground for the community, a gathering space, a place of respite and joy
- is beautiful and resilient
- meets the highest standards of sustainable design

That does justice to the remarkable legacy of David Crombie and the precedent setting neighbourhood that surrounds the park.



The image is a comprehensive urban design plan for the revitalization of David Crombie Park. At the top, a detailed site plan shows the park's layout, including streets (Market St, Lower Jarvis St, George St, Church St, Lower Sherbourne St, The Esplanade, Princess St, Spadina Ave, and Parliament St), existing buildings (St. Lawrence Market, Downtown Alternative School, St. Michael's Catholic School, Hydro One, St. Lawrence Community Recreation Centre, Market Lane School), and proposed green spaces. Below the plan are seven columns, each representing a different block of the park. Each column contains a small photograph of the proposed design, a title, a detailed description of the features, and two thumbs-up/down icons for public feedback. The blocks are: Block 1: South Market (plaza, seating, community events), Block 2: School (playground, active spaces, shade), Block 3: Forest (splash pad, seating, canopy, fitness station), Block 4: Central Gathering (social swings, water play, shade canopy, events space, seating, dog area), Block 5: Gardens (outdoor rooms, horticultural planting, public art, seating, fitness station, path), Block 6: School (observatory, playground, active spaces, shade, water feature, picnic tables), and Block 7: Parliament Square Park (wider pathway, fitness station, soccer field, future linkage). At the bottom, a large text box provides the website 'toronto.ca/david-crombie-park-revitalization-design' for more information.