

Parks & Open Space

Existing Conditions

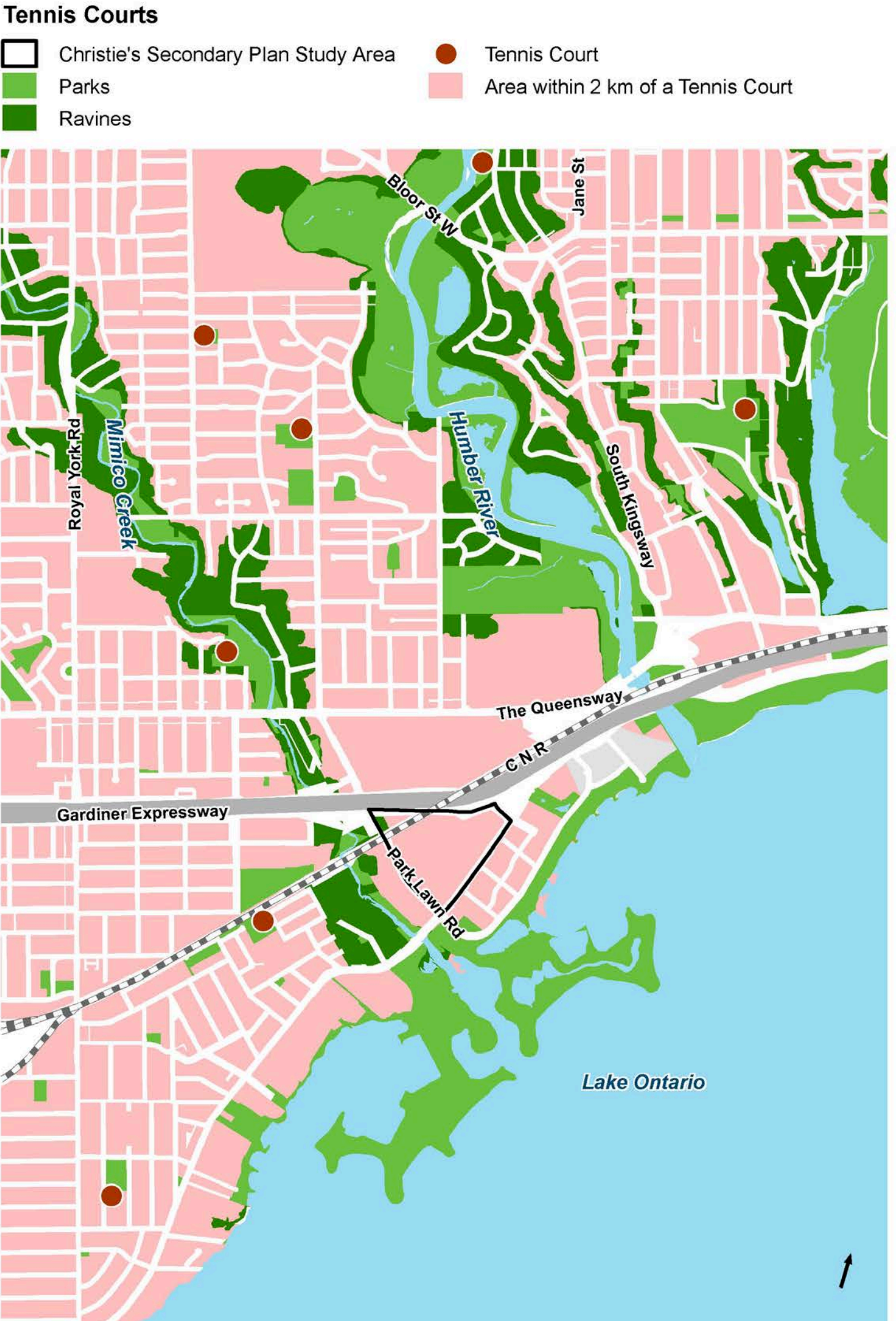
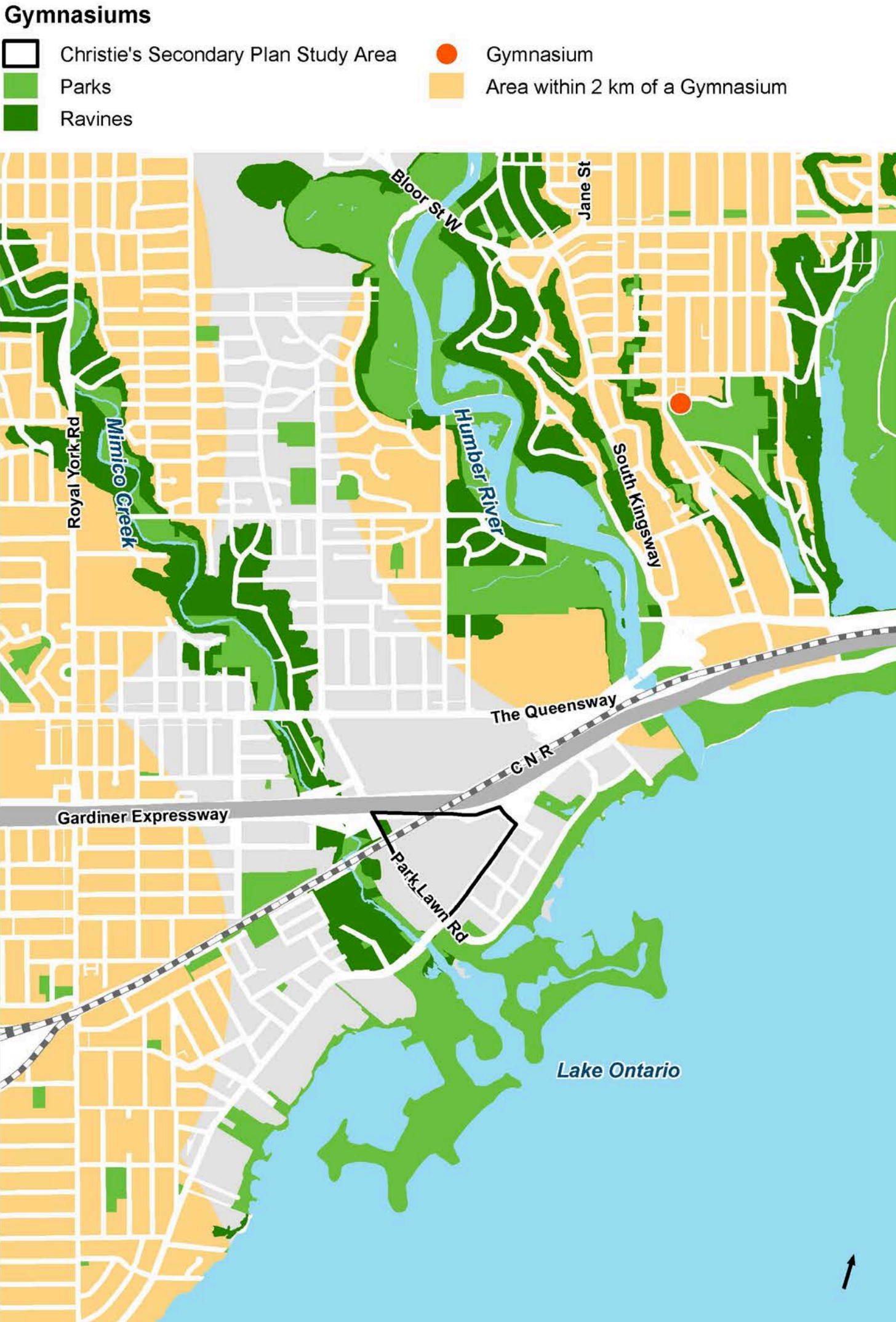
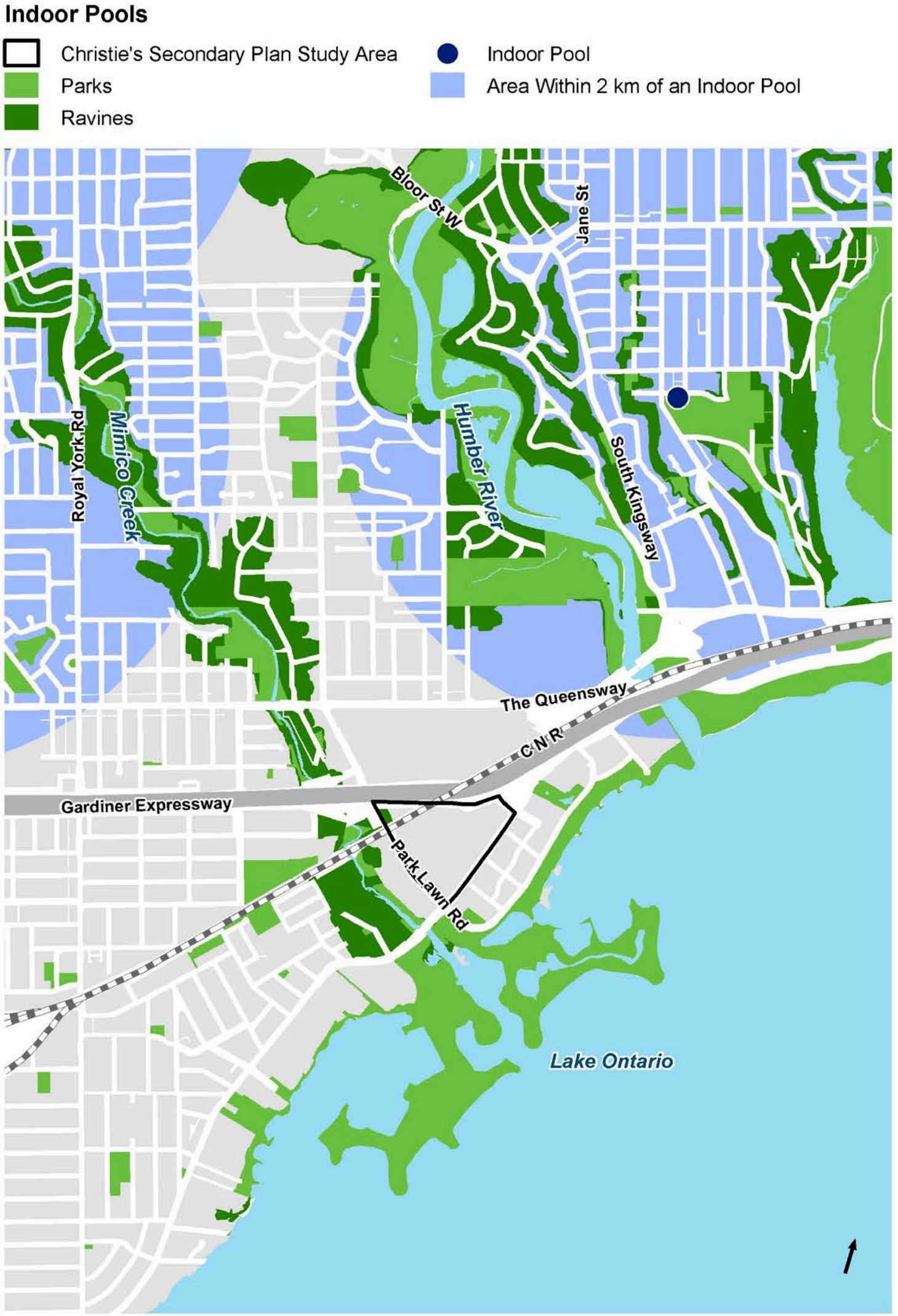
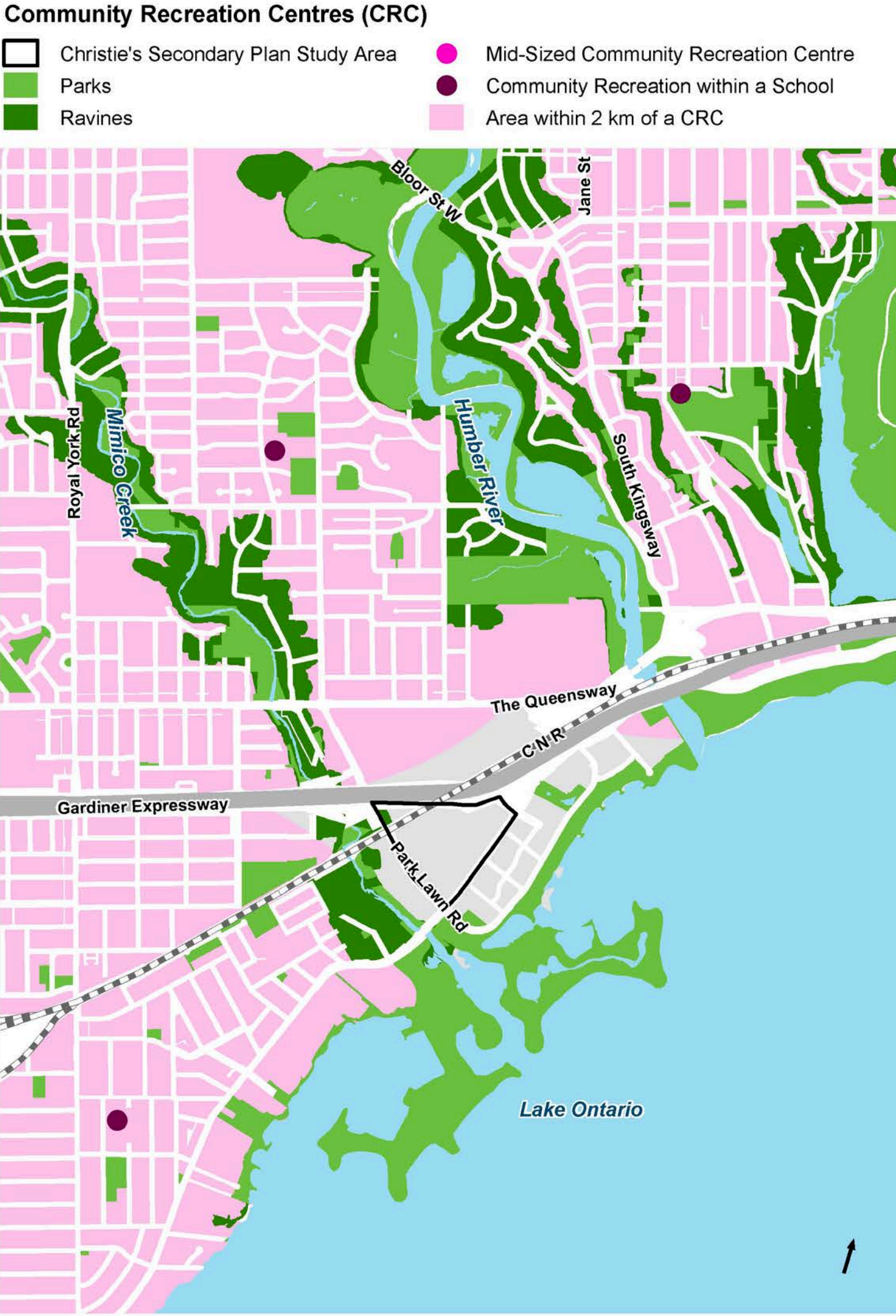


What parks do you use? Place a sticker on your favourite spaces.



No.	Park	Size (m ²)	Outdoor Recreation Facilities/Amenities	
1	Jean Augustine Park	8,053	<ul style="list-style-type: none">• Pathways• Ornamental fountain	Note: Also known as Newport Beach Park
2	Humber Bay Park East	206,893	<ul style="list-style-type: none">• Fieldhouse• Pathways and trails• Picnic area	<ul style="list-style-type: none">• Washrooms• Garden
3	Humber Bay Park West	258,221	<ul style="list-style-type: none">• Trails• Washrooms• Dog Off-Leash Area	
4	Humber Bay Shores Park	73,577	<ul style="list-style-type: none">• Garden (butterfly habitat)	
5	Humber Bay Promenade Park	8,527	<ul style="list-style-type: none">• Trails• Shade structure• Ornamental fountains	
6	Superior Park	3,910	<ul style="list-style-type: none">• Trail	
7	Amos Waites Park	14,485	<ul style="list-style-type: none">• Outdoor pool• Splash pad• Table tennis	<ul style="list-style-type: none">• Pathways• Washrooms
8	Sir Casimir Gzowski Park	128,784	<ul style="list-style-type: none">• Playground• Wading pool• Fieldhouse• Fitness equipment area	<ul style="list-style-type: none">• Dog Off-Leash Area• Ornamental fountain• Picnic area and shelters• Trails and pathways
9	Alexander Park	1,049	<ul style="list-style-type: none">• Playground	
10	Flora Voisey Park	724	<ul style="list-style-type: none">• Playground• Shade structure	
11	Manchester Park	23,271	<ul style="list-style-type: none">• Tennis courts• Playground• Pathways	
12	Grand Avenue Park	-	-	Note: To be renamed Grand Manitoba Park
13	Jade Park	-	-	
14	2183 Lake Shore Blvd. W	-	-	
15	South Mimico Trail	-	-	Note: (Phase 1 to be completed in 2020)

Parks & Open Space Recreation Facilities Inventory



Parks & Open Space Guiding Principles



KEY DIRECTIONS

1. Identifying preferred locations for future parks and other open spaces such as Privately-Owned Publicly Accessible Spaces (POPS)
2. Determining park sizes
3. Prioritizing park amenities and recreation facilities to serve the community and address recreation gaps and growth-related needs

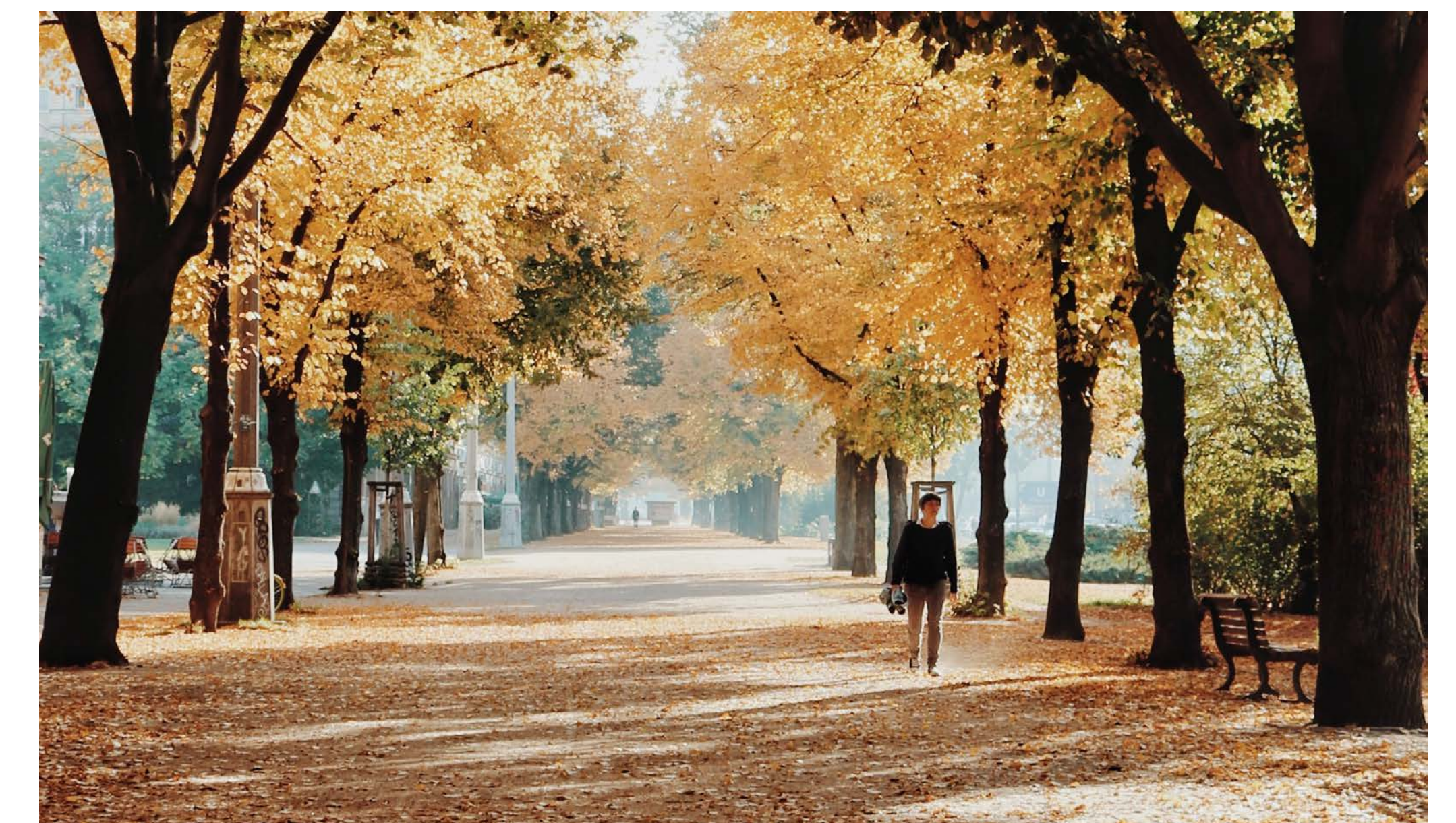
CELEBRATE NATURAL HERITAGE

The study area is uniquely positioned in close proximity to Lake Ontario, Mimico Creek, and the Humber Valley. Future park and open space design, programming, and vistas will highlight and connect the area's beautiful natural heritage.



CREATE CONNECTIONS

Support seamless mobility and active lifestyles through a system of interconnected green spaces within and to and from the study area.



FACILITIES MASTER PLAN



Planning for new recreation facilities in future parks within the study area will be guided by the Parks and Recreation Facilities Master Plan (FMP), a 20-year plan for new recreation facilities across the city, based on the principles of quality, sustainability, innovation, and equity.

CREATE DIVERSE OPEN SPACES

Different types of open spaces, such as pocket parks, urban plazas, and wide sidewalks, will be incorporated within the study area. These spaces will provide opportunities for activation, arts and culture, seating, and gathering spaces.



CREATE ACTIVE + PLAY SPACES

Parks and open spaces in the study area will provide opportunities for more active recreation and play for all ages and abilities throughout the year.



Parks & Open Space Feedback



WHAT KIND OF PARK AMENITIES WOULD YOU LIKE TO SEE? Please use a sticker to indicate on what you want.



Playground



Splash Pad



Skate Spot



Multi-Use Court



Exercise Equipment



Toboggan Hill



Skating Trail



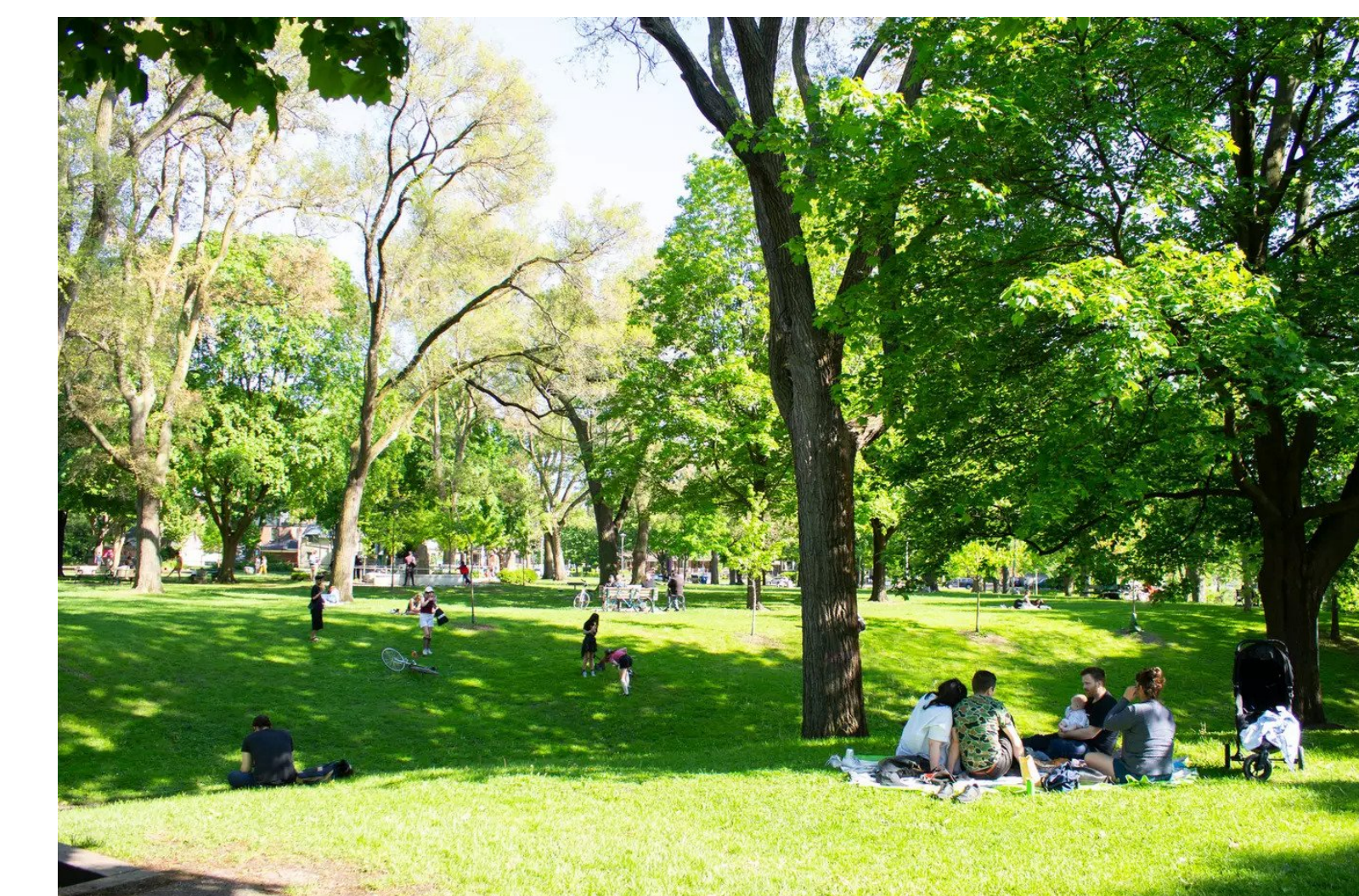
Soccer Field



Multi-Use Trail



Gathering Space



Open Space



Community Garden