

# PARK LAWN LAKE SHORE



- MORE CONNECTIONS
- SAFER ACCESS
- HIGH QUALITY STREETSCAPE DESIGN

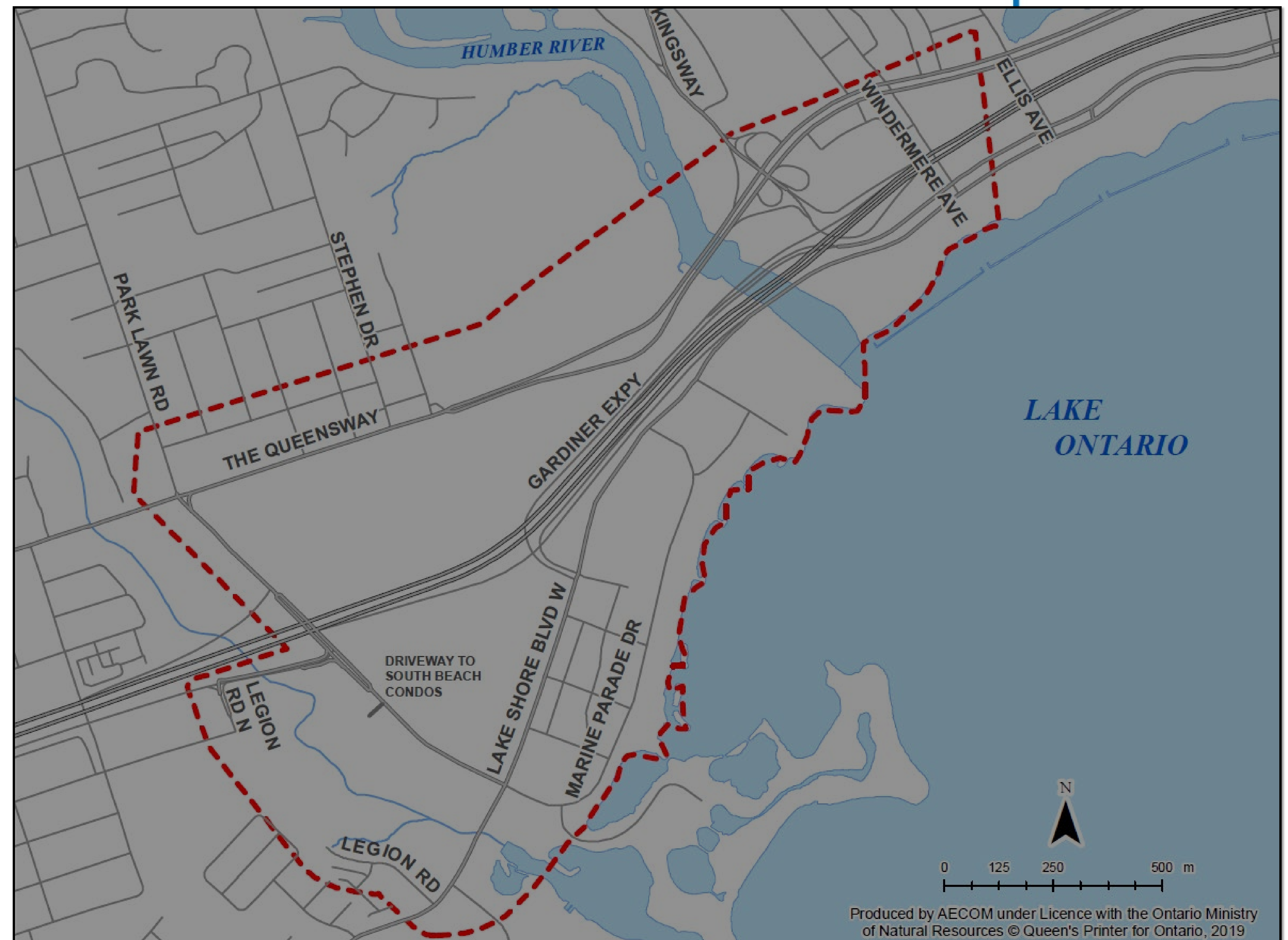
## TRANSPORTATION MASTER PLAN

### Study Purpose

The Park Lawn Lake Shore Transportation Master Plan (TMP) will identify changes needed to improve transportation options for all users.

The TMP is an integrated approach to meet the existing and future needs of a diverse range of users by providing:

- New connections and better access to roads, transit, and pathways;
- Additional safe and convenient crossings of physical barriers;
- Planning for investment in public transit, pedestrian, and cycling networks; and
- High quality streetscape design.



**Study Area Limits** (as shown in above map):

The Queensway, Lake Ontario, Ellis Avenue, Legion Road/Gardiner Expressway



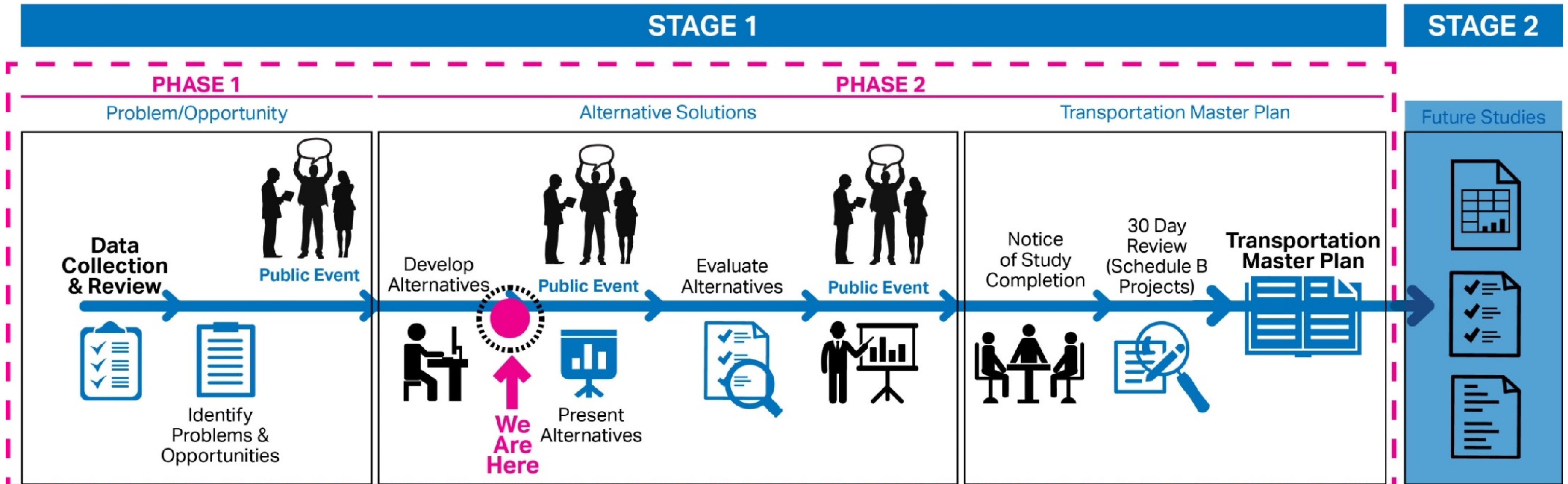
# Process

Transportation Master Plans (TMP) are an approved Provincial process to address infrastructure planning projects under the Environmental Assessment Act.

It creates a framework for planning a range of infrastructure projects that may be implemented over a period of time. Larger infrastructure recommendations will require further study by completing Phases 3 and 4 of the Environmental Assessment process.

Phase 1 consultation was held in Fall 2016 to identify transportation challenges in the Park Lawn Lake Shore study area. The next public events for the TMP will present the Alternative Solutions and take place in Spring 2020.

The TMP was put on hold following Phase 1 until a final decision was reached on the land use of the Christie's Site. Future public consultations will convey relevant information on how the TMP and Planning Study are aligned.





# What we heard in Phase 1

Activities included 2 public workshops, stakeholder meetings, an online survey, print and digital communications to reach all residents, businesses, and local community groups.

Public events were attended by 130 participants, and 415 responses were received to the online survey. A complete summary of Phase 1 consultation activities can be found on the project website [www.toronto.ca/parklawnlakeshore](http://www.toronto.ca/parklawnlakeshore).

## TRANSIT

- Support for a new GO Station to service the study area while maintaining Mimico GO Station
- Create a new streetcar line LRT routes; optimize/add bus routes
- Consider other locations for a new transit hub / transit loop, or improve existing Humber Loop (i.e., access for cyclists and pedestrians)
- Improve service frequency; create an integrated fare structure

## ACTIVE TRANSPORTATION

- Create a continuous east-west bike lane along Lake Shore Boulevard West
- Create separate cycle paths to reduce congestion on trails and pathways
- Enhance cycling and walking network through existing and future infrastructure

## ROAD NETWORK

- Create new connections across the Gardiner Expressway and reduce 'choke points' across the Humber River
- Improve access to the Gardiner Expressway, Ontario Food Terminal, and other properties
- New turning lanes at Park Lawn and Lake Shore are working well; signal synchronization needs improvement

Additional comments described concerns related to:

- Construction impacts to quality of life
- Safety concerns for all road users
- Development & population increases
- Parking demands

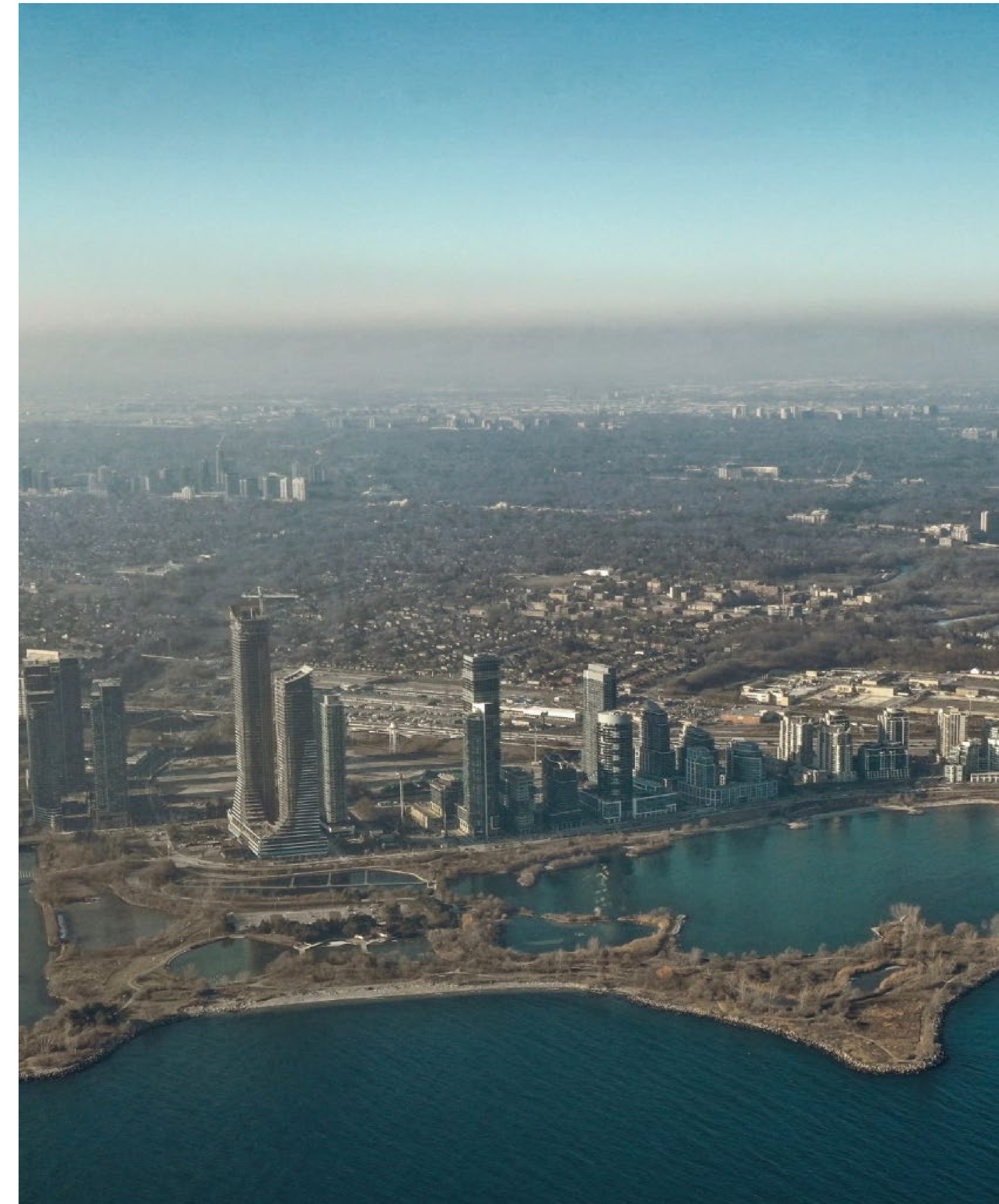


# Have Your Say

We invite you to join us in helping shape the future of transportation options in the Park Lawn Lake Shore community.

- ✓ **Sign up for email updates**  
Stay up to date on key study milestones and opportunities to get involved.
- ✓ **Send in feedback via email, phone, mail, or online survey**  
You can email or call in your comments and ask questions. All information received will be recorded and reviewed by the project team. At different points in the Study, online feedback forms (surveys) will be available to collect responses on key issues.
- ✓ **Attend an event in-person**  
There will be public events at key study milestones where you can come out and learn more about the Study, speak with City staff, and discuss questions and concerns in person.

[www.toronto.ca/parklawnlakeshore](http://www.toronto.ca/parklawnlakeshore)



**Robyn Shyllit,**  
**Sr. Public Consultation Coordinator**  
Robyn.Shyllit@Toronto.ca  
416-392-3358

City of Toronto, Metro Hall  
55 John Street, 19<sup>th</sup> Floor.  
Toronto, ON. M5V 3C6