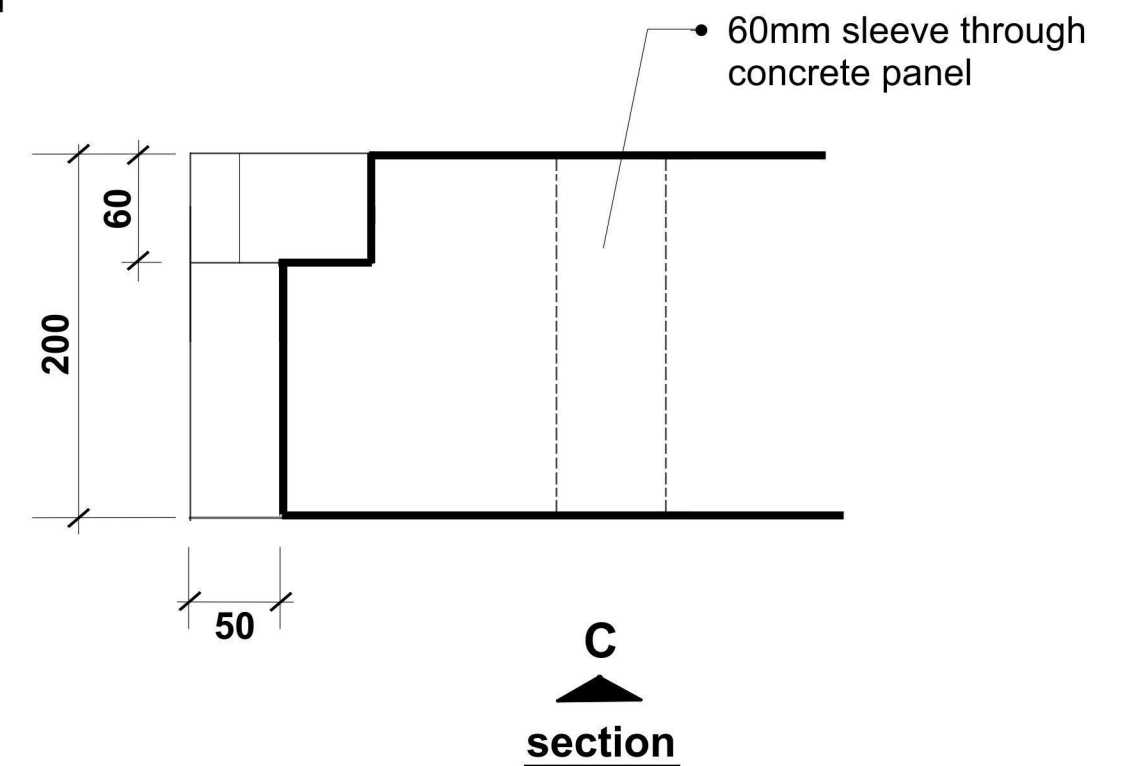
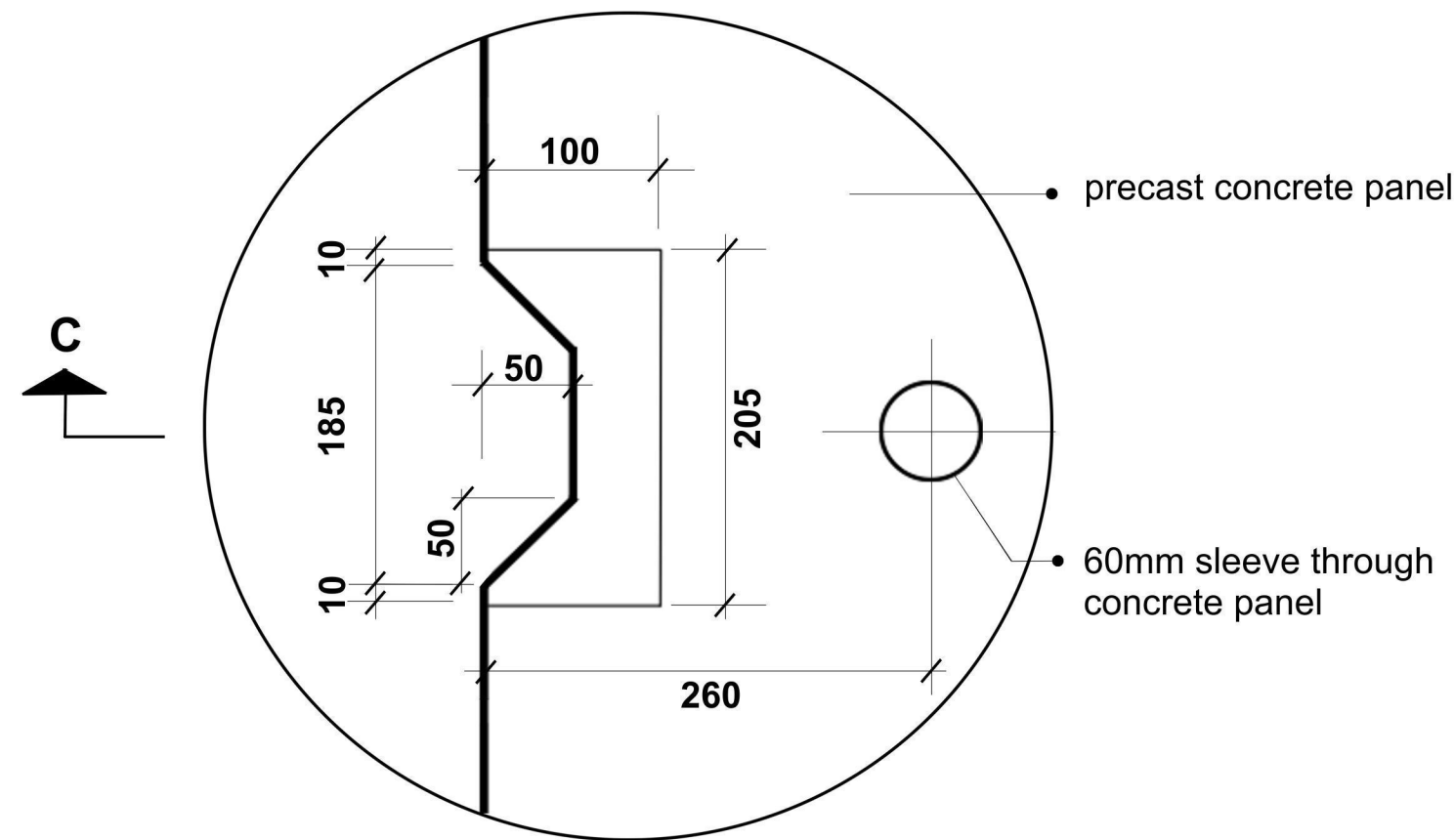
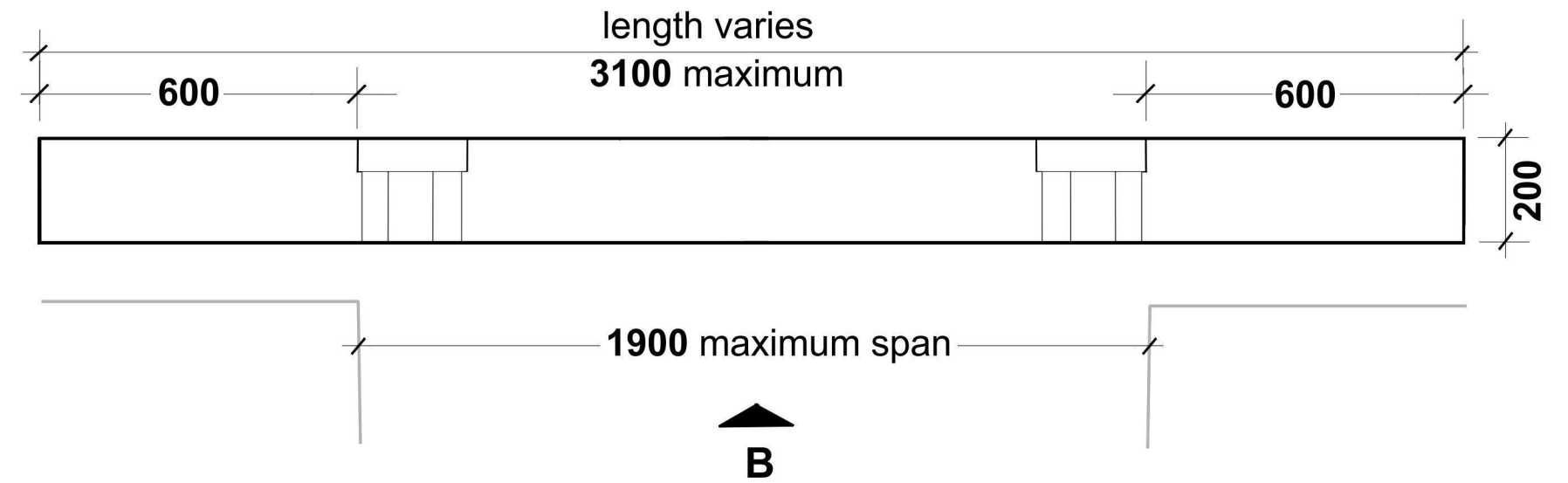


note: precast concrete panel to be designed to comply with the Canadian Highway Bridge Design Code. loading requirements to be based on wheel load of 87.5 kN and an axle load of 175 kN or as otherwise specified.



Tree Planting Details

T - PCP series

precast concrete panel 'A'

Date: June 2019

Revised:

Dwg. by: PS



T - PCP 6.0 - 8a