

October 30, 2019

EMERGENCY REPAIR WORK

East Don Sanitary Trunk Sewer

Start Date: October 7, 2019
Expected Completion for Repair: December 31, 2019
Expected Completion for Restoration (trees, etc.): Spring and Fall 2020

This construction notice is a follow-up to October 8 notice and provides details of emergency work the City of Toronto will be undertaking. The East Don Sanitary Trunk Sewer has structural damage and requires immediate emergency repair work to protect the infrastructure from possible failure. A temporary sewer bypass system has been set up and the repair of the sewer is currently underway. This trunk sewer is a critical component of the City of Toronto's underground infrastructure system serving a population of approximately 46,600 people.

The trunk sewer is located in the East Don Parkland adjacent to the Don River East Branch and the East Don Trail. The closest intersection is Finch Avenue East and Leslie Street, with the project location south of Finch Avenue East and west of Alamosa Drive (more details below).

For pedestrian safety during construction, the East Don Trail is now closed. We apologize for the inconvenience. Please do not enter the trail during construction. Traffic restrictions are also in place on Finch Avenue East near the entrance to the East Don Trail.



WORK DETAILS

In order to complete the emergency repair work, crews will need to do the following:

- Close the East Don Trail walking path/trail from the entrance on the south side of Finch Avenue East to the entrance through Alamosa Park near Alamosa Drive and Gatehead Road. This closure is required for pedestrian safety during construction.
- Close the eastbound curb lane of Finch Avenue East surrounding the entrance to the East Don Trail. This closure is required for equipment staging and deliveries.
- Removal of five trees to accommodate the replacement of the trunk sewer and two new maintenance holes.
- Installation of two new maintenance holes to facilitate the temporary sewer bypass system and create access.
- Set-up and management of the temporary sewer bypass system for the duration of the repair.
- Replacement of the damaged portion (approximately 15 m length) of the 1200 mm diameter East Don Sanitary Trunk Sewer.
- Once the work is completed, crews will restore the surrounding vegetation, as needed. All work will be done according to seasonal planting guidelines and is being carried out in consultation with Toronto and Region Conservation Authority and the City of Toronto's Parks, Forestry and Recreation division.

A map of the work area can be found on the back page.

WHAT TO EXPECT DURING CONSTRUCTION

	<p>Work Hours: Work will be completed in accordance with the City's Noise By-law predominately between 7:00 a.m. to 7:00 p.m., Monday to Friday, but also with work after hours, on weekends, and occasionally on a 24/7 basis.</p>
	<p>Pedestrian Access: To complete the work safely, pedestrian restrictions will occur. The East Don River Trail will be closed during the work from the north side (40 metres south of Finch Avenue East) toward south side at Alamosa Park. Temporary fencing and signs will be erected around the construction site to protect the public.</p>

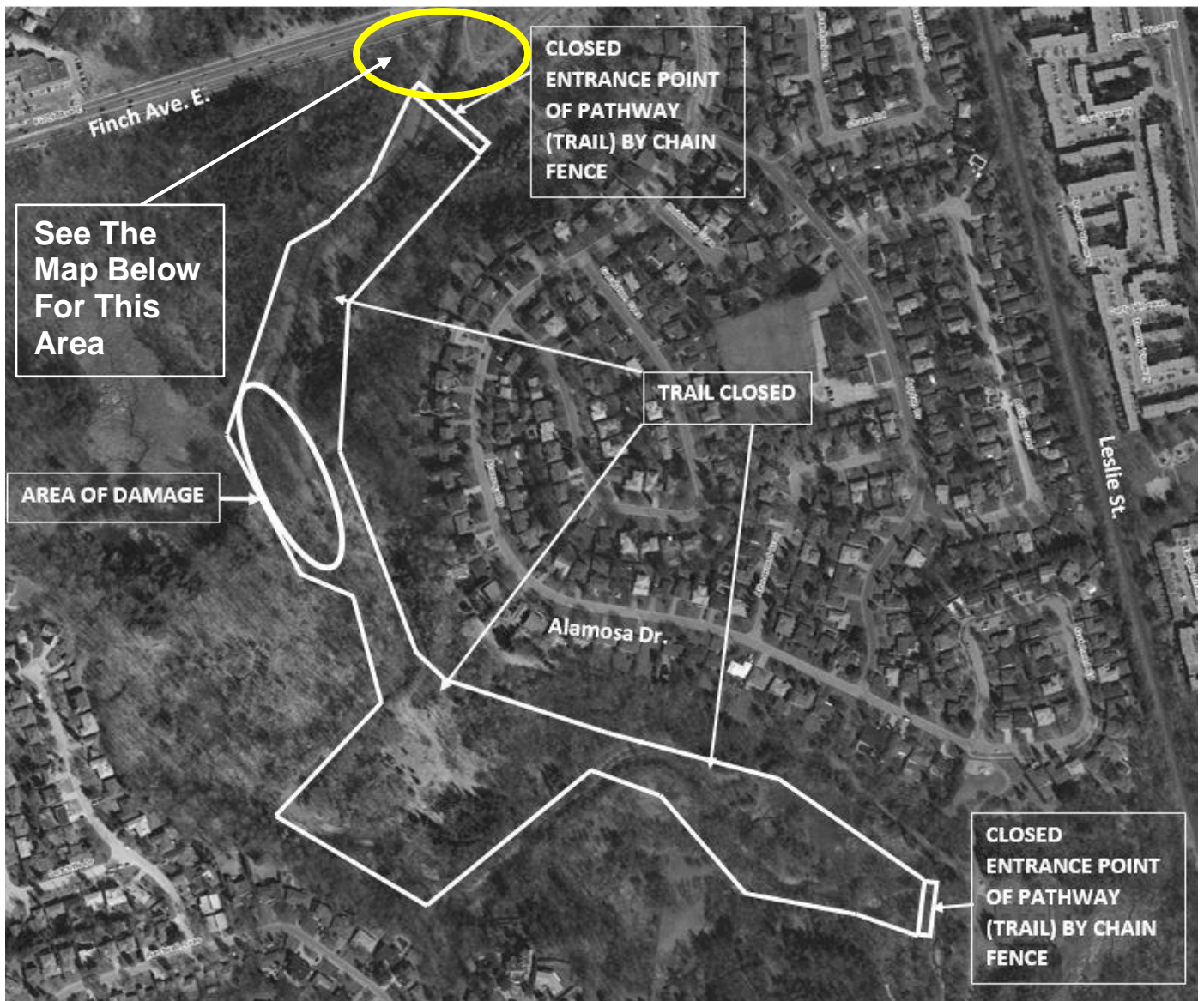


Traffic Management: Efforts have been made to manage traffic in the area of the access routes for the safety of works, road users and residents. The southbound curb lane of Finch Avenue East surrounding the entrance to the East Don Trail will be closed -- please see map below. This closure is required for contractor access including equipment and deliveries. There will also be increased truck traffic on Finch Avenue East for material deliveries.

NEED MORE INFORMATION?

Field Ambassador	Adam Zietara, Manager, Toronto Water, 416-392-9334, Adam.Zietara@toronto.ca
General inquiries	311
TTY Hearing Impaired Service	416-338-0889 (7 Days a week, 8:00 am – 5:00 pm, closed holidays)
Website	toronto.ca/improvements/ward17.htm

MAP OF WORK AREA



MAP OF THE WORK AREA - FINCH AVENUE EAST

