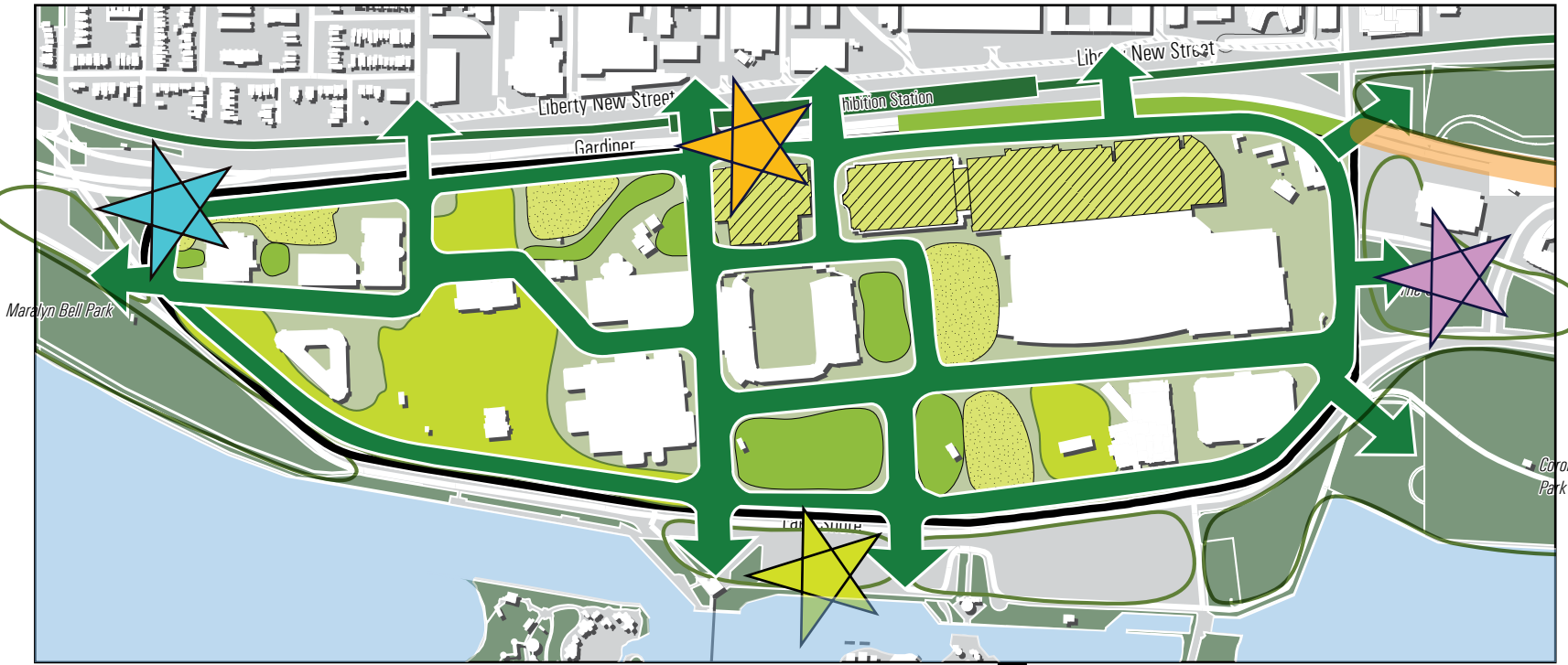


Emerging Big Ideas

1- Enhanced Gateways



Do you agree with these emerging big ideas?

North

- a. Integrated Transit Hub and Liberty Village Connections
- b. Extension of the Bentway and Fort York Connection



Homme de Fer LRT station, Strasbourg
Source: Eole 99, www.wikipedia.org



The Bentway
Source: <https://dailyhive.com>

South

- a. Deck Park/ Plaza over Lake Shore Boulevard and connection to Ontario Place
- b. Re-established lake park edge promenade



Deck Park
Credit: Thomas McConnell



Queens Quay Revitalization
Source: DTHA

East

Expansion of The Gore Park



Public Square, Cleveland, USA
Source: <https://www.politico.com>

West

Expansion of Marilyn Bell Park and improved Parkdale Connection



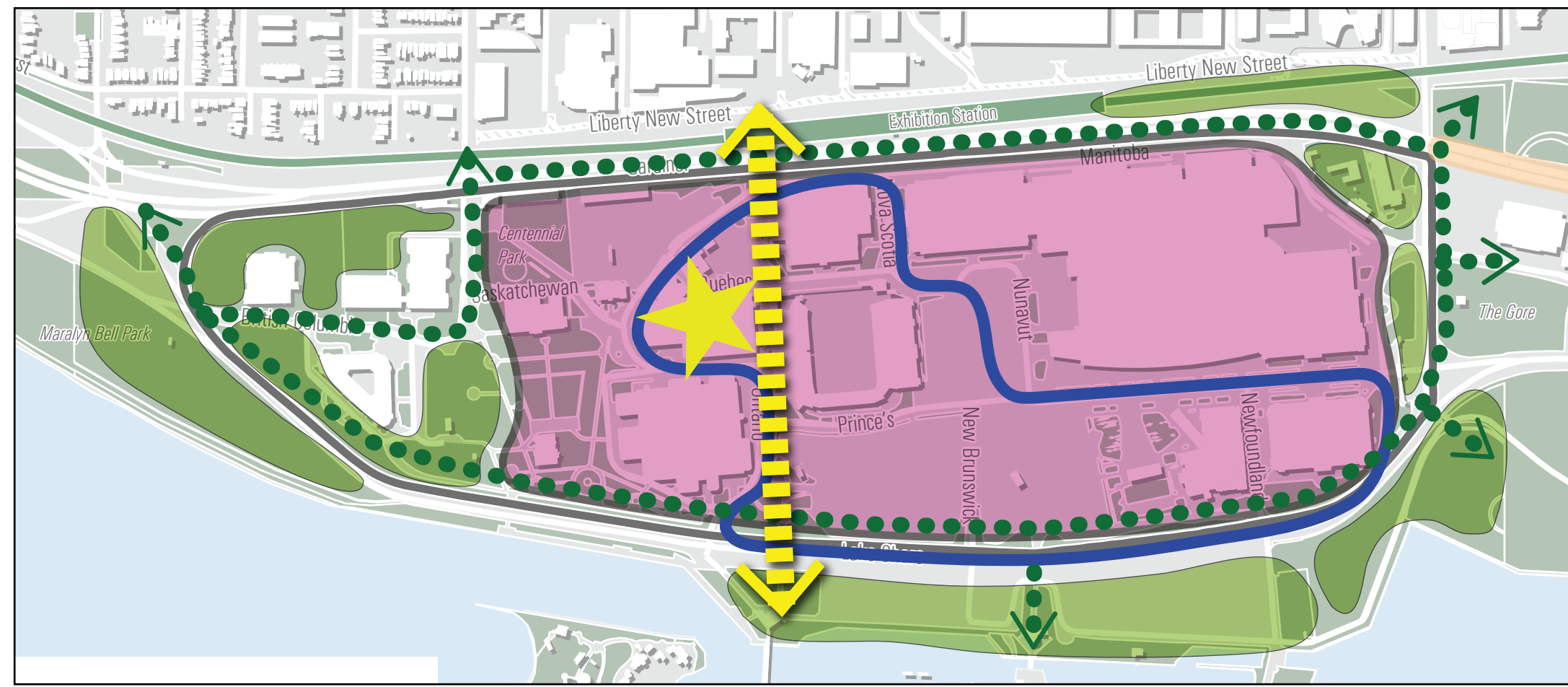
Public Square, Cleveland, USA
Source: <https://www.politico.com>

Emerging Big Ideas

NEXT PLACE

Exhibition Place Master Plan

2- Elevated Multi-Use Promenade



Connecting Liberty Village/Transit Hub,
Exhibition Place, and Ontario Place

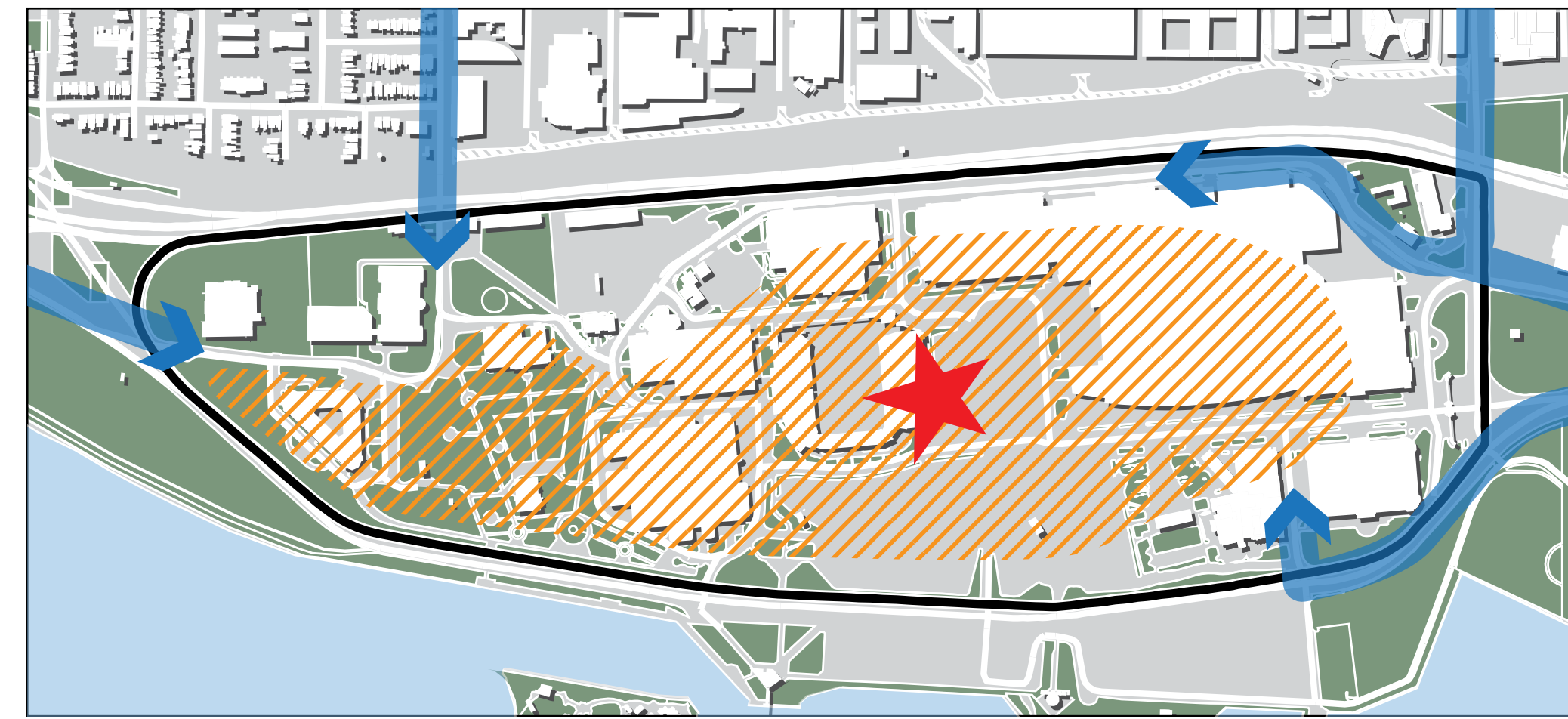


Highline, NYC
Source: wikipedia - image by Beyond My Ken



Tehran's Nature Bridge
Source: www.dibats.com

3-Transportation & Sustainability Innovation Zone

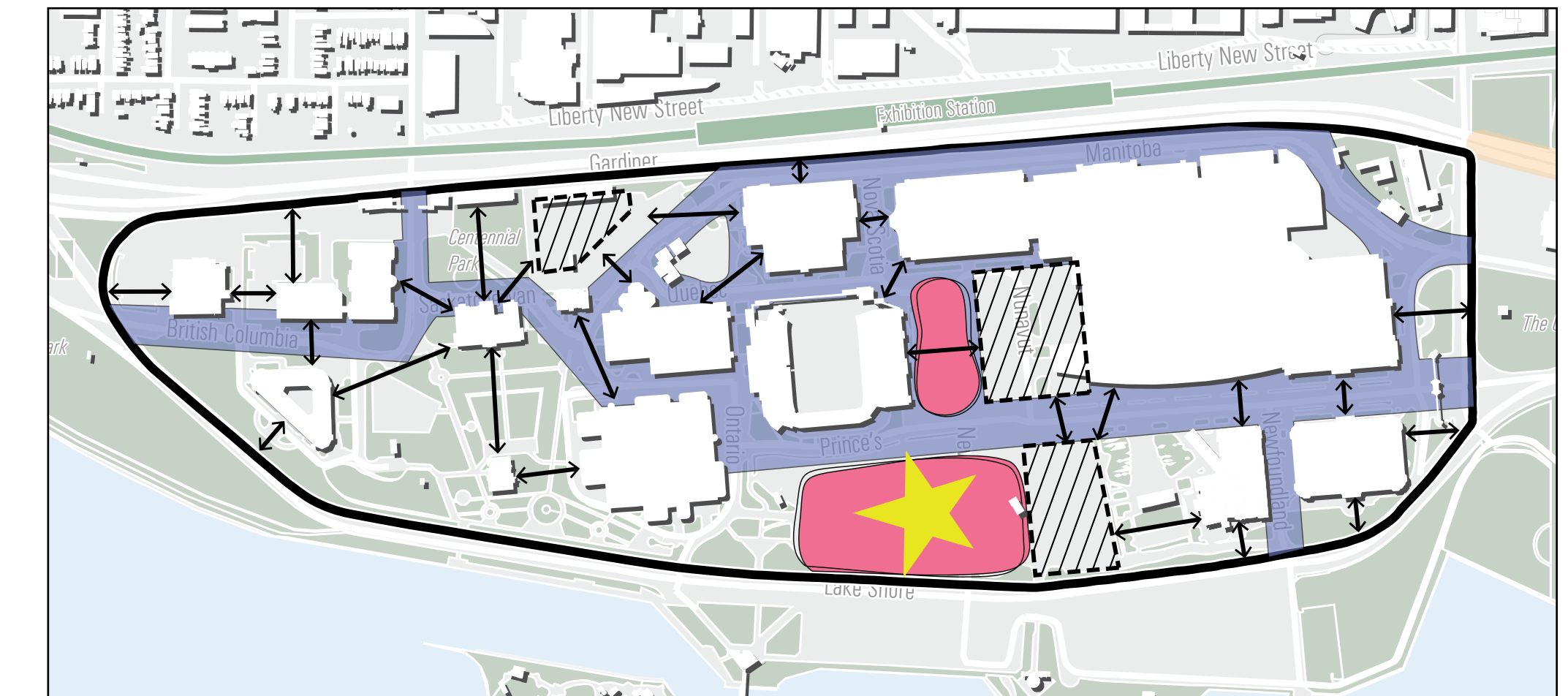


Green Paving
Source: www.grasscrete.com



Automated shuttle, Montreal
Source: Frank Mignacca, www.cbc.ca

4 -Major Gathering Space



Public Square, Cleveland, USA
Source: <https://www.politico.com>



Toronto Ice Festival
Source: <https://www.thestar.com> (Feb. 19, 2015)

Do you agree with these emerging big ideas?

Let us know what you think.

NEXT PLACE
Exhibition Place Master Plan

Did we miss anything critical?
Do you have any concerns?

For more information: www.toronto.ca/nextplaceplan | nextplaceplan@toronto.ca | [#nextplaceplan](https://twitter.com/nextplaceplan)

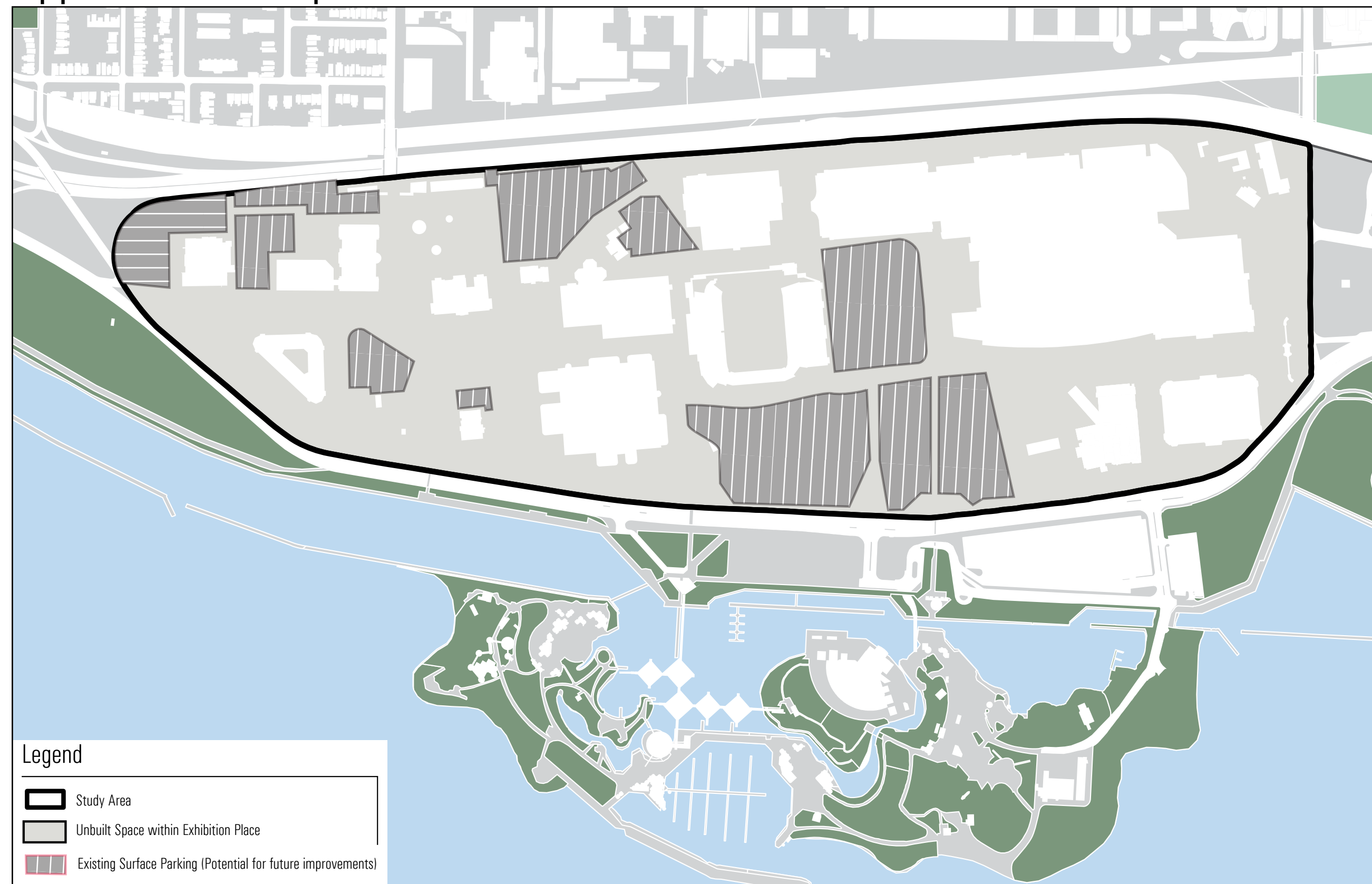
SWOP Analysis

NEXT PLACE

View along Princess Blvd

Exhibition Place Master Plan

Opportunities - Map 1



Existing surface parking



Existing surface parking

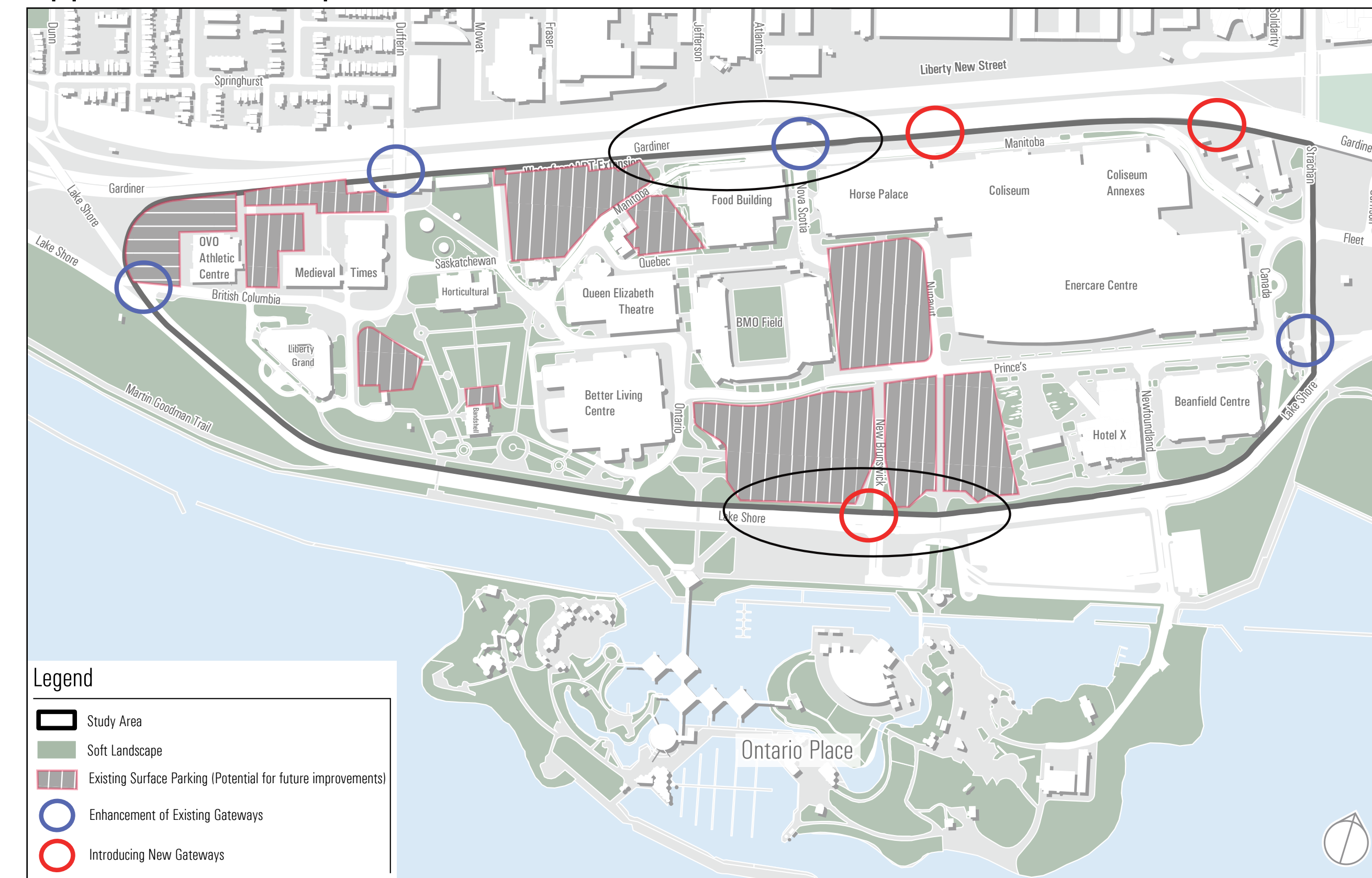


Existing surface parking



As previously stated 75% of the study area is unbuilt area. 16% of this space is occupied by surface parking, which means there are great opportunities to make major improvements in terms of parks and open spaces, plazas, new connections and new public uses and activities.

Opportunities - Map 2



Using these spaces requires creative solutions to providing parking spaces. Other opportunities include enhancement and expansion of the existing gateways and creating new ones where no current access is provided.

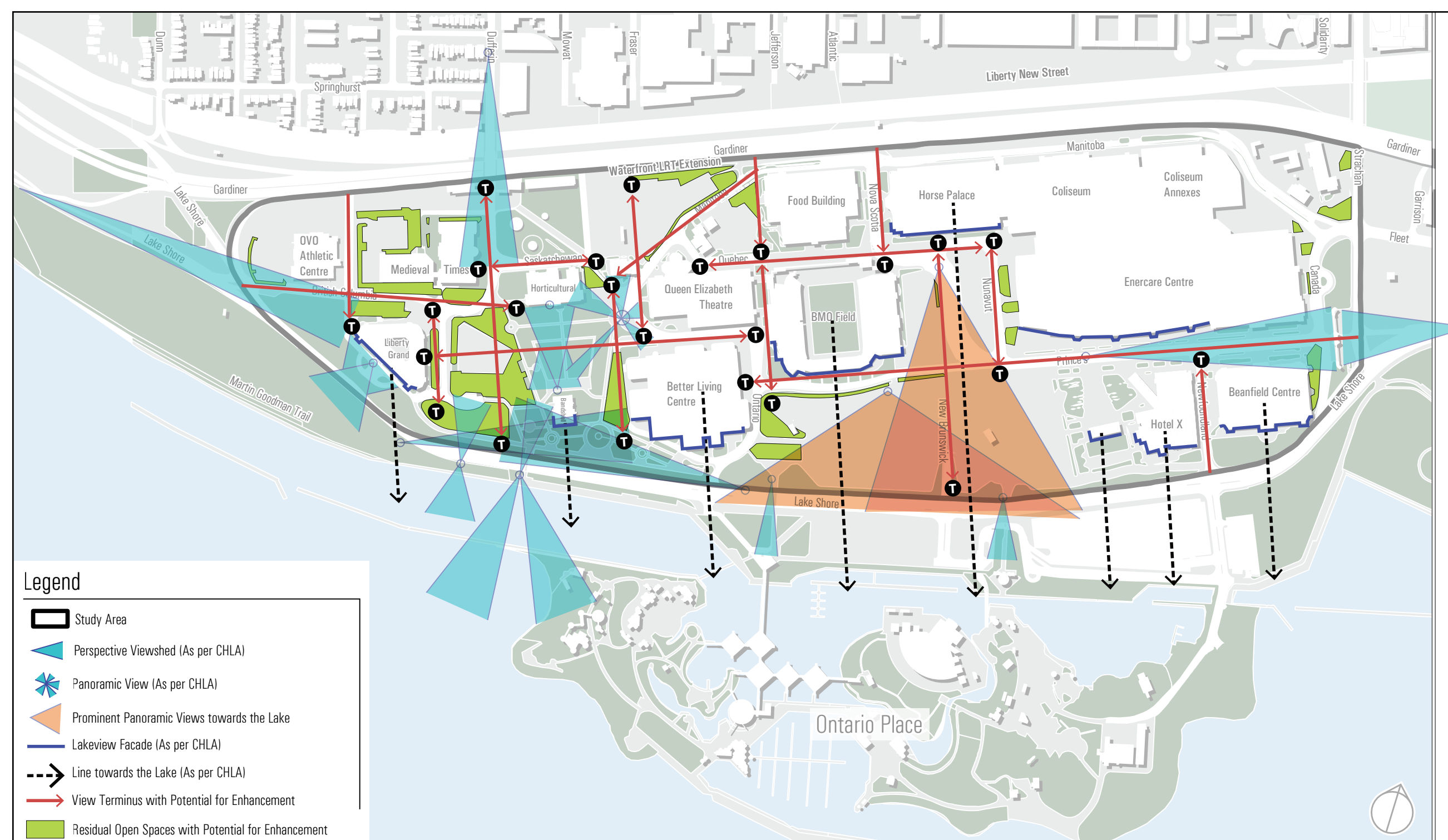
Dufferin Gate



Looking East along Manitoba Dr.



Potentials - Map 1



View along Princess' Boulevard



View towards Horticultural Building

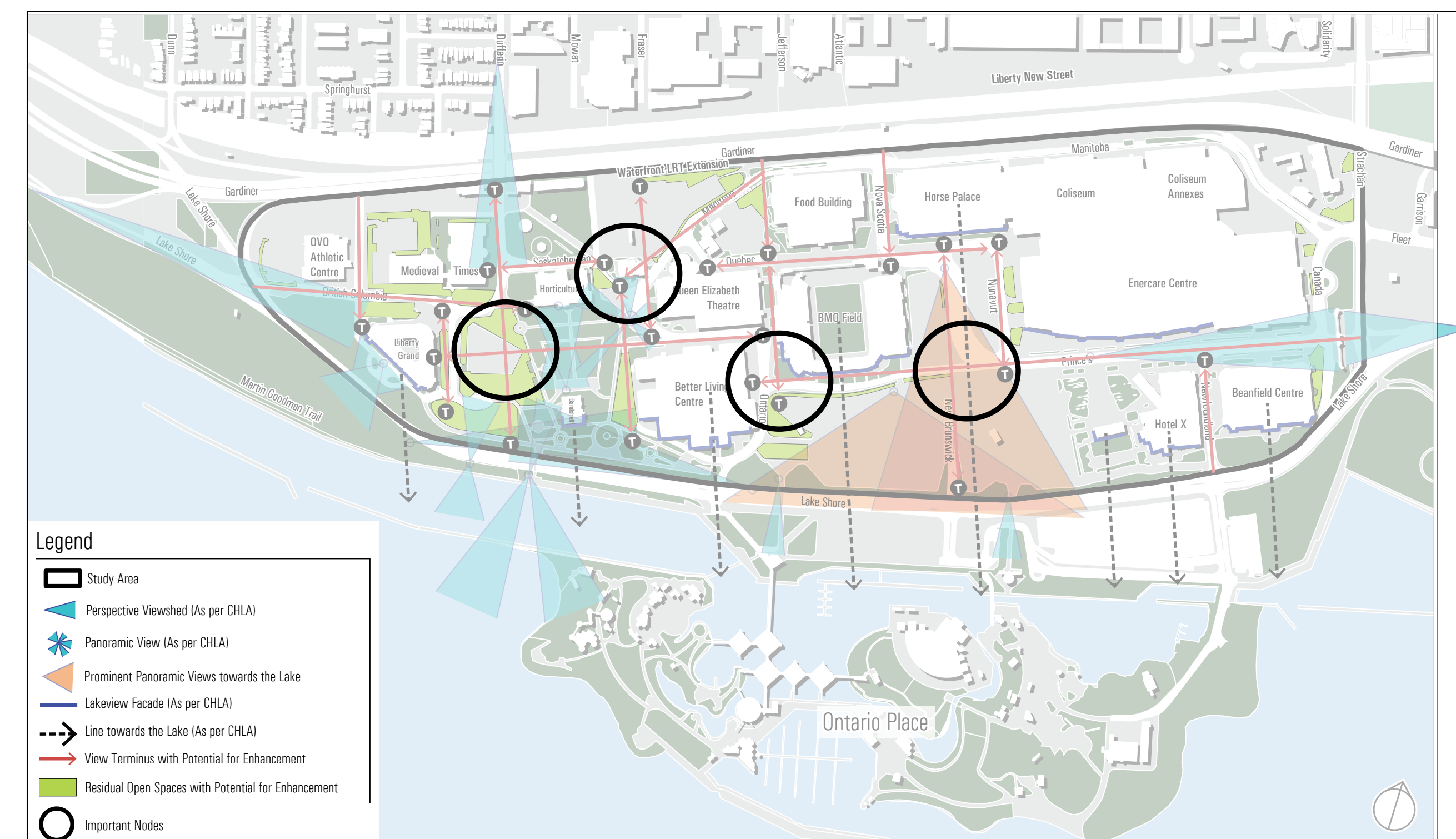


View towards the Lake



Another aspect of the analysis was to identify potentials of the study area. The site has some defined corridors for movement and some desire lines, both of which are important in terms of identifying important view termini and view cones.

Potentials - Map 2



The intersection, orientation and location of these important views help to identify opportunities for new meeting points and further enhancement.

Potential meeting location close to BMO field



Potential meeting location close to Medieval Times



Potential meeting location close to Horticulture and Queen Elizabeth buildings



Exhibition Grounds Precedents

Hannover Messe (Fair)



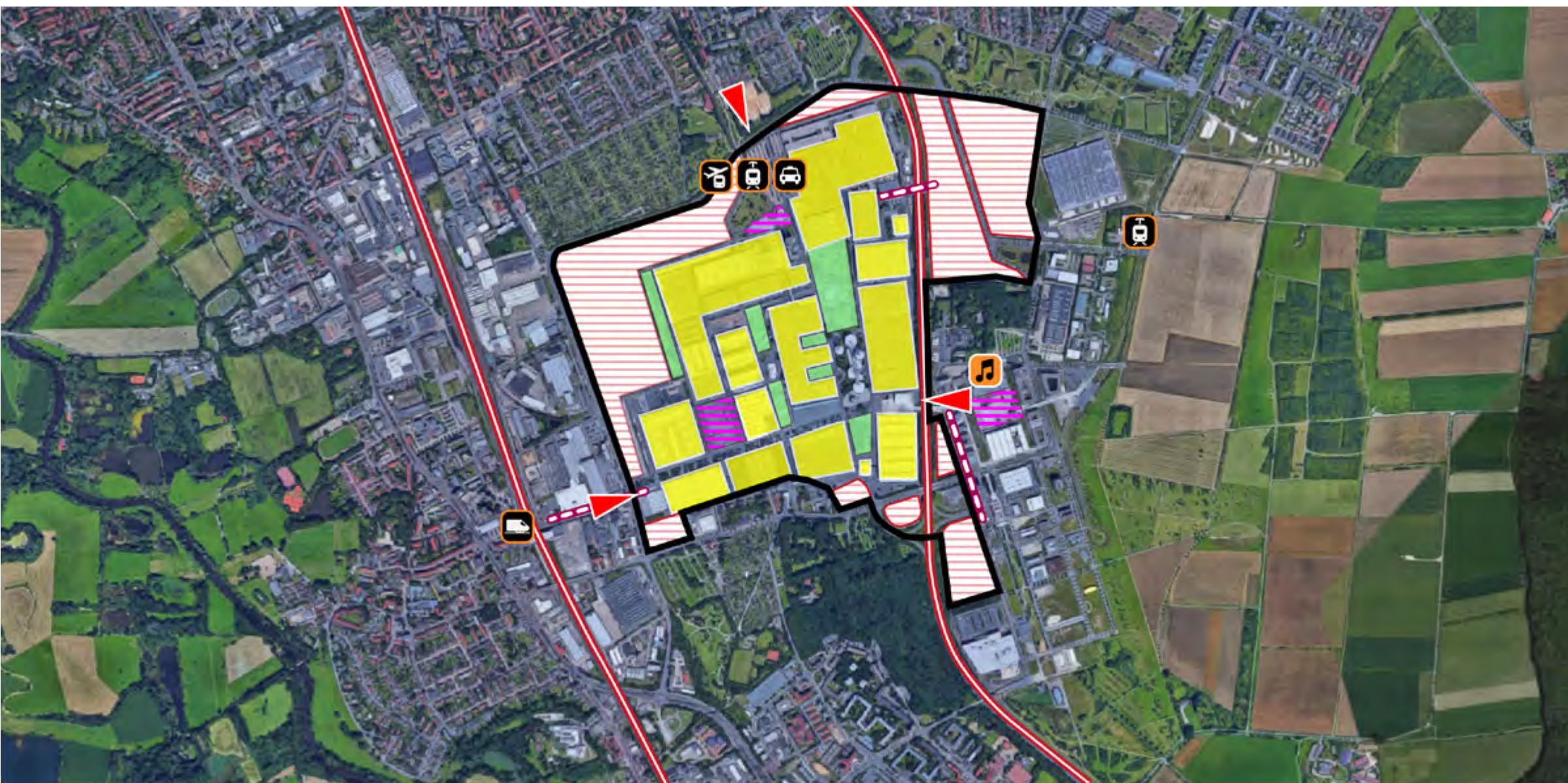
EXPO Roof - Pavilions 32-35



Administration Building



Fairground in 1960's



200 m

Frankfurt Messe (Fair)



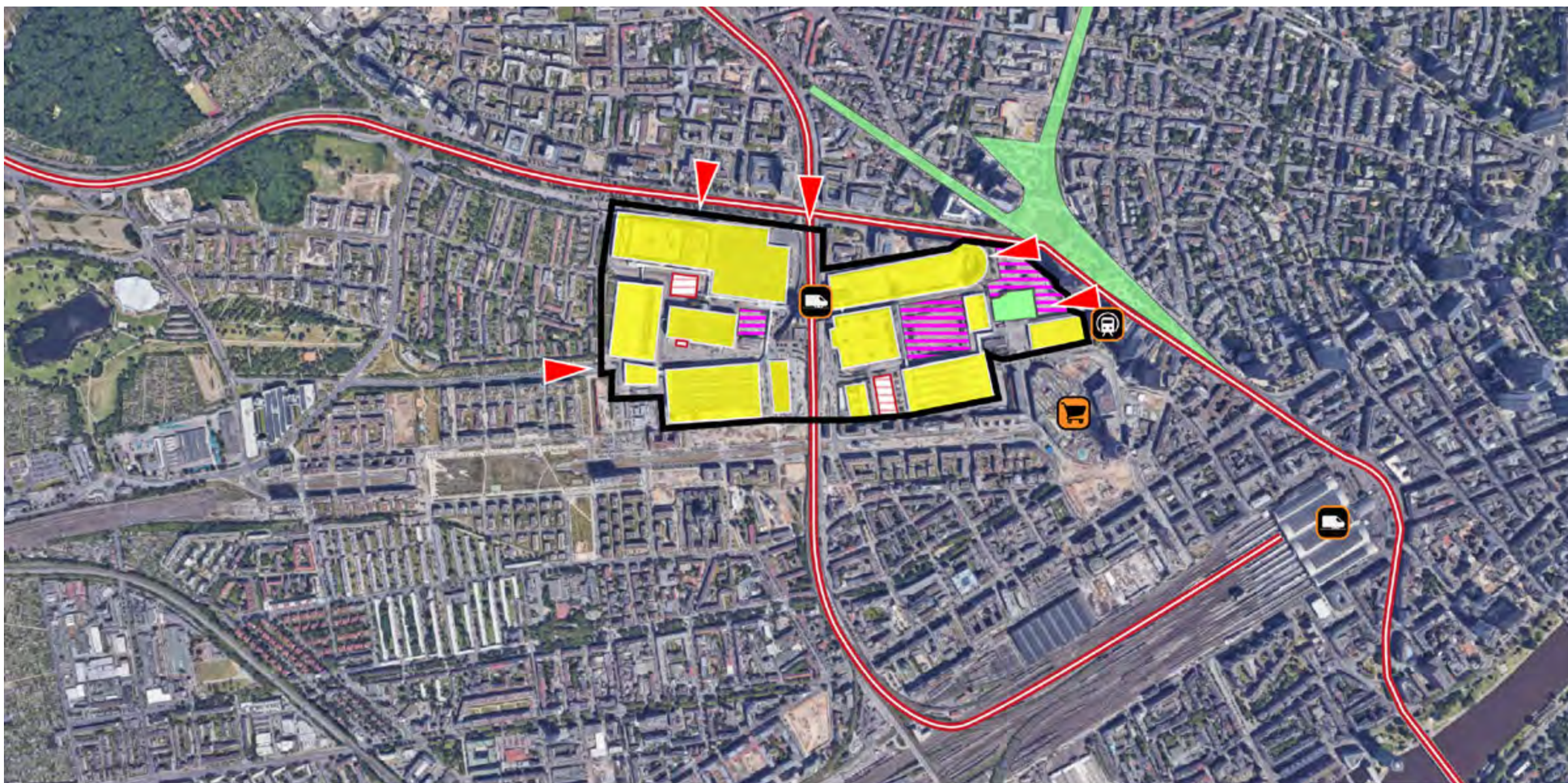
Forum Messe Frankfurt



Frankfurt Festhalle



Frankfurt Messe - not dated



200 m

Georgia World Congress Center Atlanta



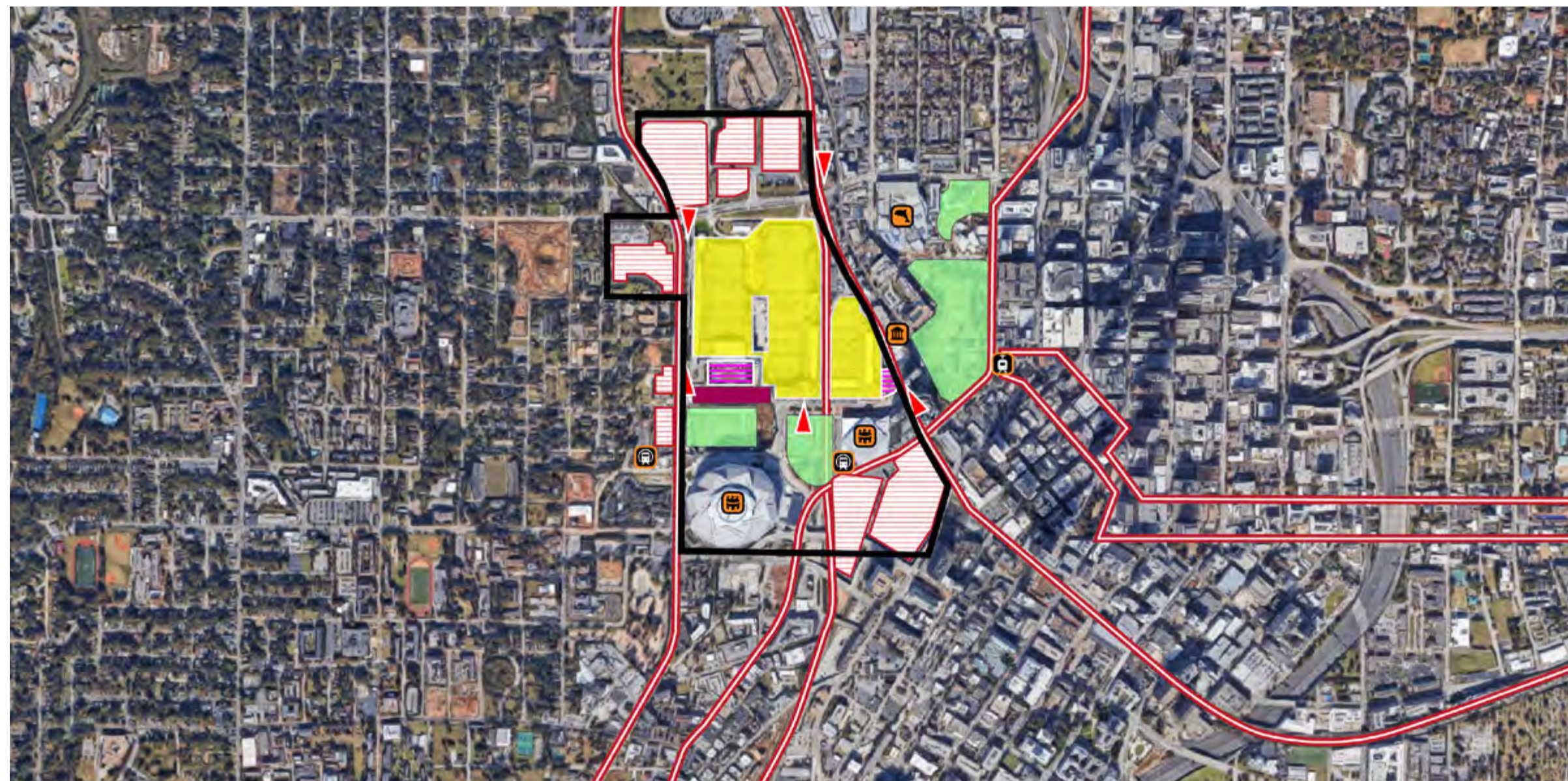
Georgia World Congress Center



Building C



Center Complex in 1980's



200 m

Takeaways



Pedestrian Bridge in Hannover Messe



Inside of Festhalle Messe Frankfurt

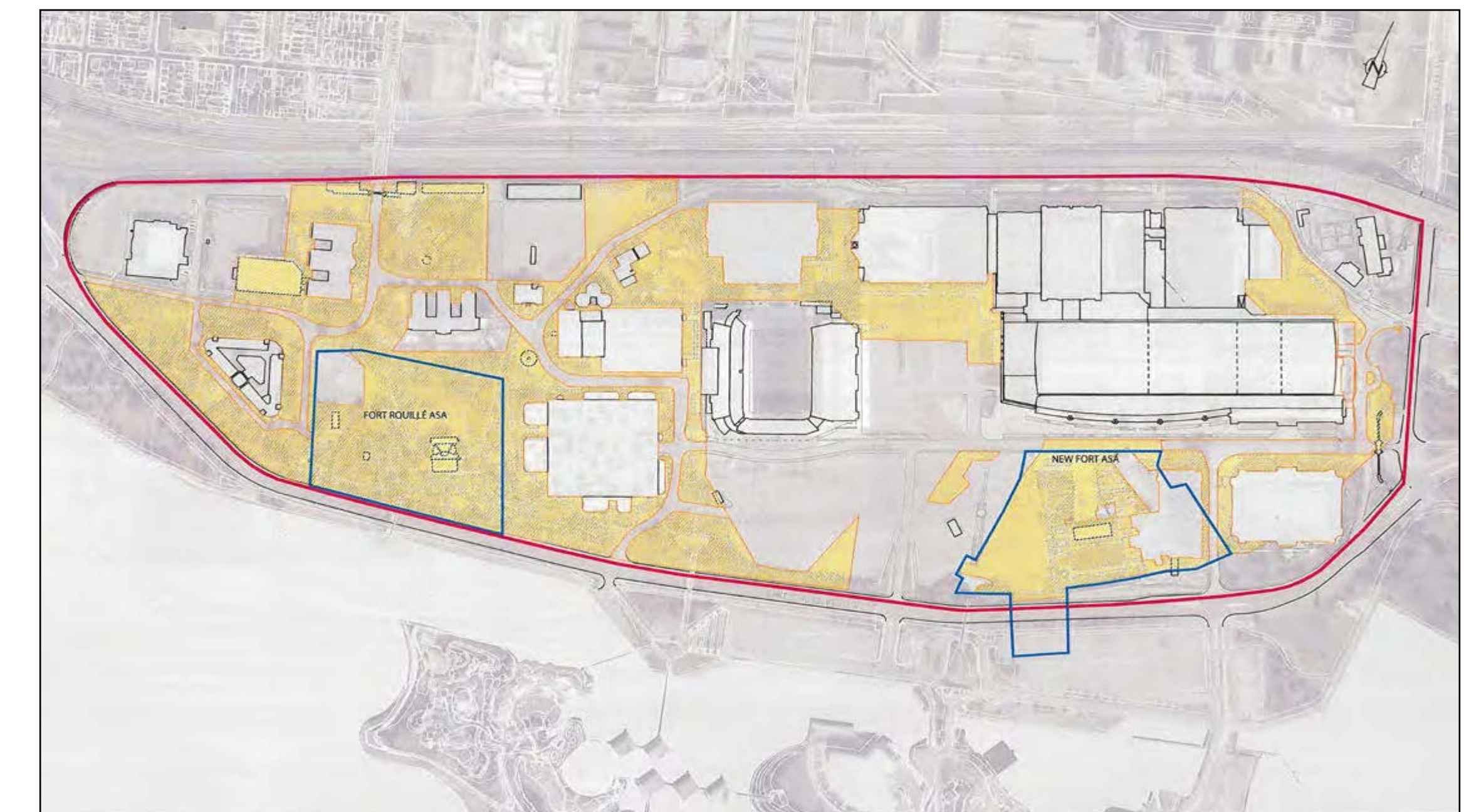
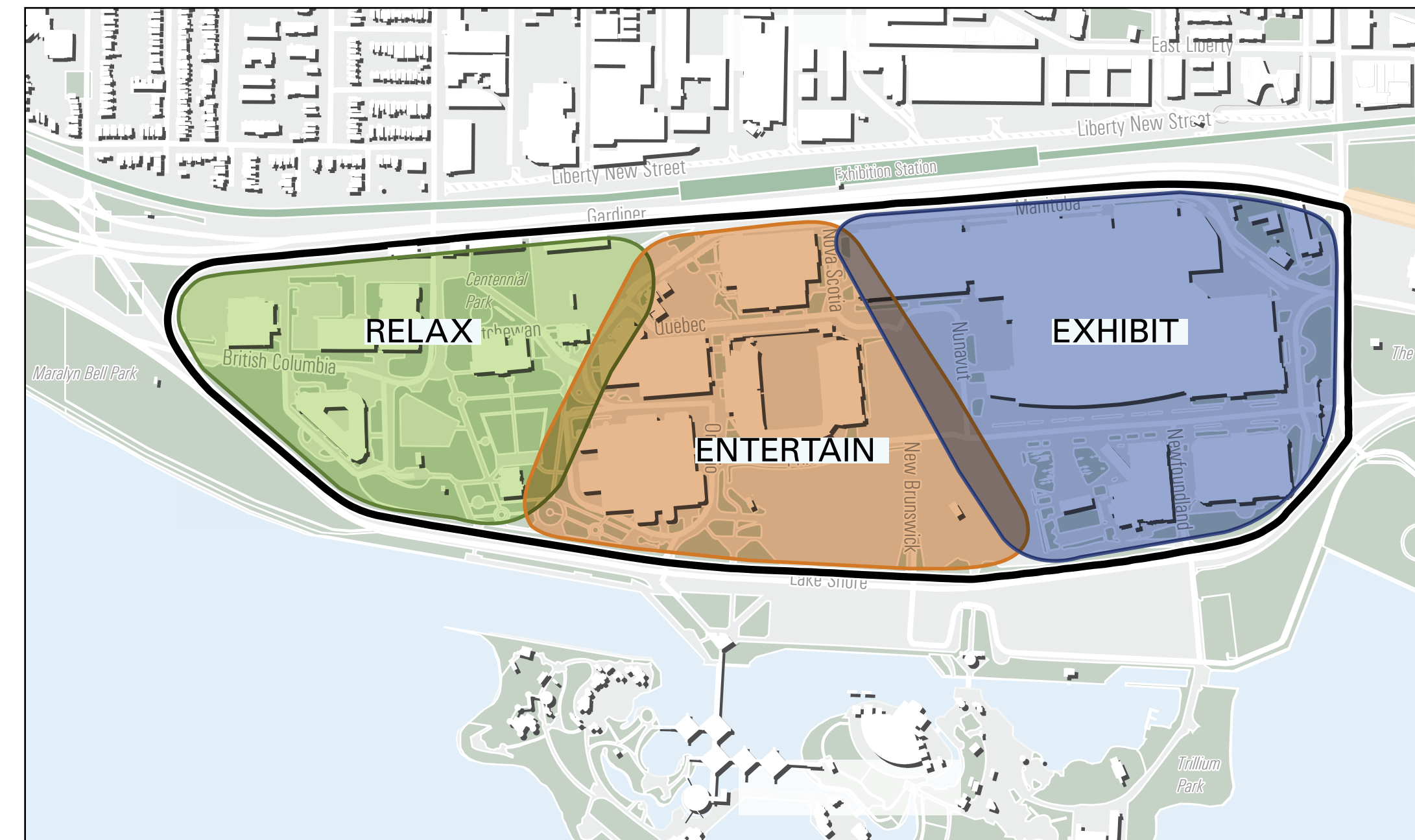
- Pedestrian bridges for high volume of pedestrian circulation mitigation to increase capacity.
- Direct train and shuttle bus access from international airport.
- Revitalization of heritage asset that is accessible by the public.
- The open space relationship between the hotel and the sports stadium.
- The design of decked and underground parking lot

	Exhibition Halls/ Event Space		Train Station		Shopping Mall
	Surface Parking		Airport Shuttle		Aquarium
	Outdoor Event Space/ Square		Taxi Drop-off		Museum/ Gallery
	Green/ Open Space		Tram Station		Stadium/ Arena
	Entry Point		Subway Station		
	Major Road/ Transit Line				
	Pedestrian Bridge/ High Way				

Shaping the Vision

NEXT PLACE

Exhibition Place Master Plan



Green DNA

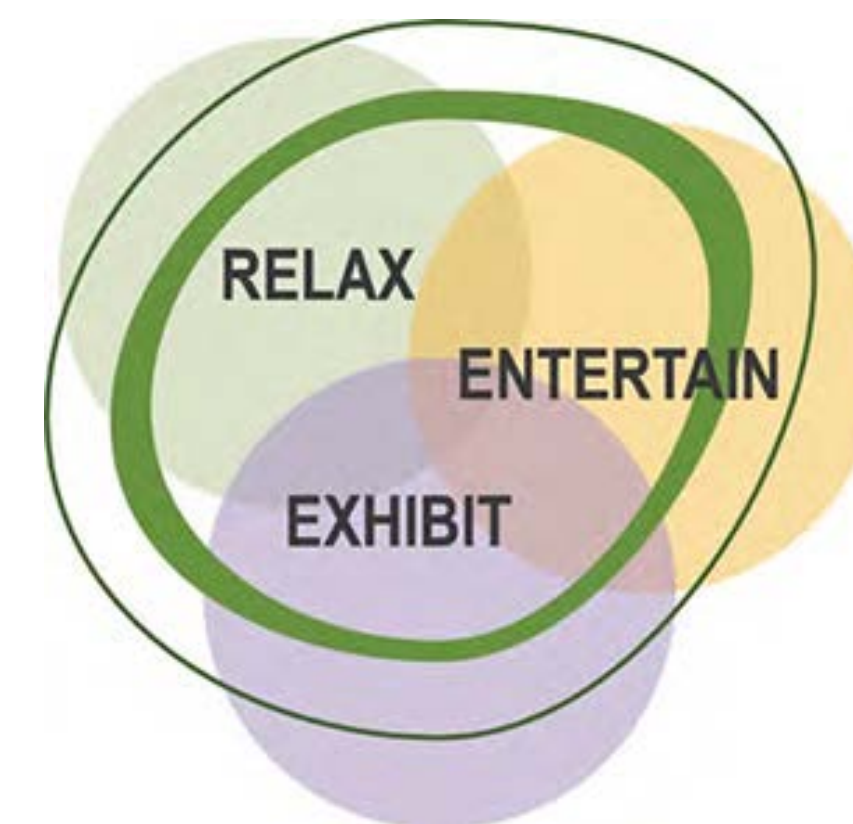


A green destination

Shaping the Vision Green DNA

Green infrastructure includes natural and human-made elements that provide ecological and hydrological functions and processes, such as natural heritage features and systems, parklands, storm-water management systems, street trees, urban forests, natural channels, permeable surfaces and green roofs.

Relax, Entertain, Exhibit



A place of recreation

A place of entertainment

A place of innovation, inspiration and economic development

Cultural Heritage Landscape



A historic place

The Vision Statement

NEXT PLACE

Exhibition Place Master Plan

Exhibition Place is an iconic Toronto landmark and historic place, that would have attracted Indigenous populations before recorded history. Since the early twentieth century, the site has been a gathering place and a location for ambitious building programs that have supported the permanent and continued home of the Canadian National Exhibition and the Royal Agricultural Winter Fair.

As Exhibition Place evolves, its distinct and continued function as a gathering place will be a foundational component of directing the physical change of Exhibition Place and enhancing the social fabric of the City of Toronto. In serving as a gathering place, Exhibition Place is:

A green destination

A place of innovation, inspiration and economic development

A historic place

A place of entertainment

A place of recreation

A unique place within the City that is easily accessible and provides public parkland and a green retreat, with connections to the waterfront open space network.

A centre for premier events, including sporting and cultural events, public celebrations, conferences, trade and consumer shows, and recurring festivals and exhibitions.

A location of extensive cultural heritage resources, including landscapes, buildings and public art, which are conserved and enhanced to celebrate the City's cultural heritage and historic character.

A year-round entertainment hub for Torontonians, tourists and event goers.

A multi-seasonal destination offering active and passive recreation opportunities for local residents, visitors and the surrounding communities.



Public Square, Cleveland, USA
Source: <https://www.politico.com>



Toronto Ice Festival (Winter Activity)
Source: <https://www.thestar.com> (Feb. 19, 2015)



View towards Liberty Grand
Source: City of Toronto



King St W closure during Toronto Film Festival
Source: City of Toronto



Dundas Square
Source: City of Toronto

What do you think about the vision statement?

Please write your answers on sticky notes and place them here.

Guiding Principles and Analysis

Removing Barriers/ Making Connections/ Prioritizing Transit

Prioritize public transit as the primary means to most efficiently move the greatest number of people to and from Exhibition Place

- Facilitate and integrate the improved light rail and bus connections between Exhibition Place, the waterfront and City, as approved through the Waterfront Transit Network Plan and other local transit initiatives;
- Accommodate the proposed Ontario Line and enhancements to the Exhibition GO Station and Lake Shore West Rail service, ensuring appropriate integration and sensitivity to land use, other transit facilities, and other circulation routes;
- Further incentivize and promote transit use including, but not limited to, options to bundle transit fares with event tickets, and assisting transit operators to optimize services to and from events.



Exhibition GO station concept
Credit: Metrolinx



Homme de Fer LRT station, Strasbourg
Credit: Eole 99, www.wikipedia.org



TTC service at Exhibition Loop
Credit: James Bow, www.transit.toronto.on.ca



Ticket and fare bundling
Credit: Metrolinx

**Score game tickets
and GO rides to and
from the game for
one low price.**

Buy the GO and Argos
combo ticket now:
gotransit.com/argos



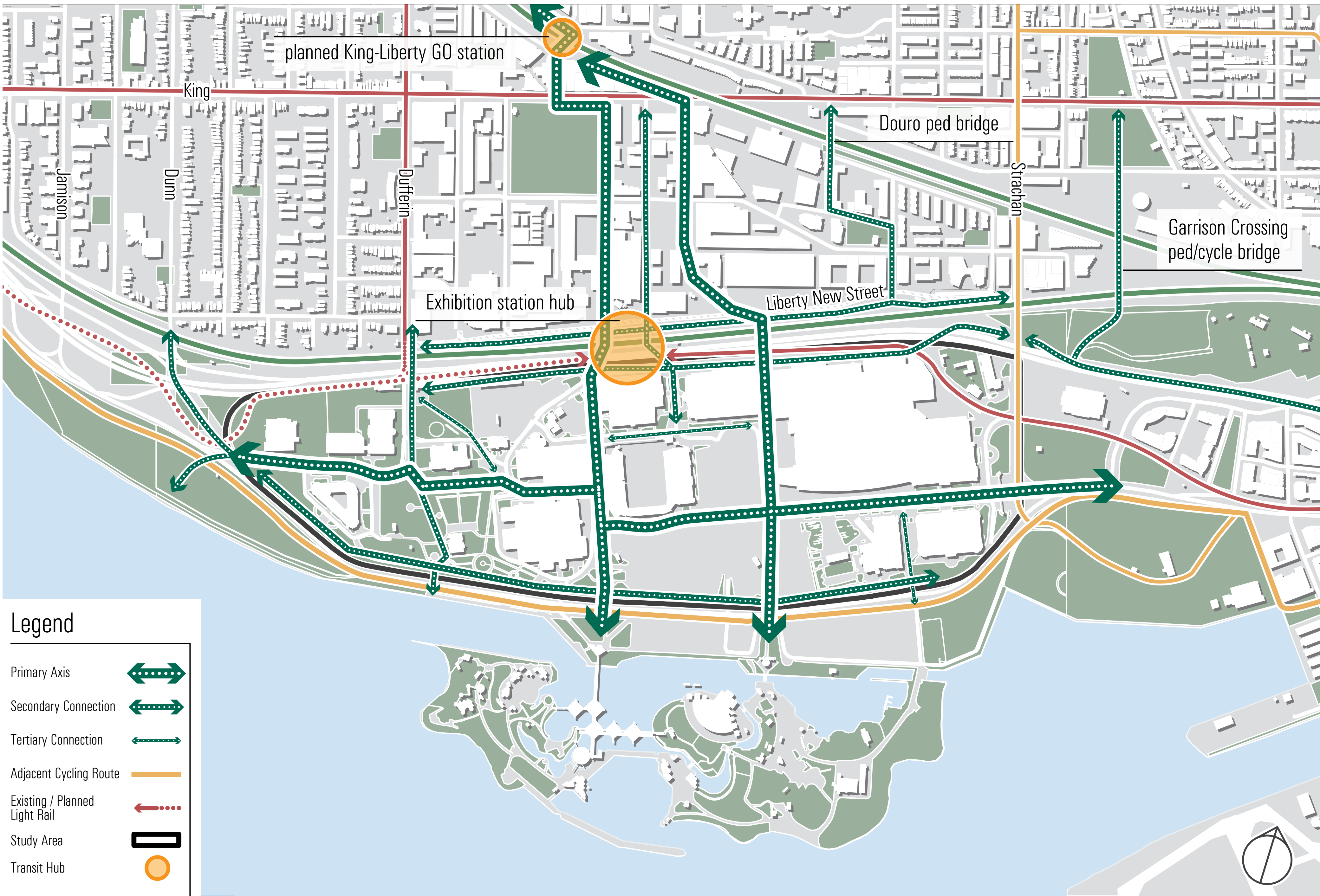
What do you think about this guiding principle? Please write your answers on sticky notes and place them here.

Guiding Principles and Analysis

Removing Barriers/ Making Connections/ Prioritizing Transit

Enhance and promote pedestrian & cycling connections to adjacent communities, within, and through the site

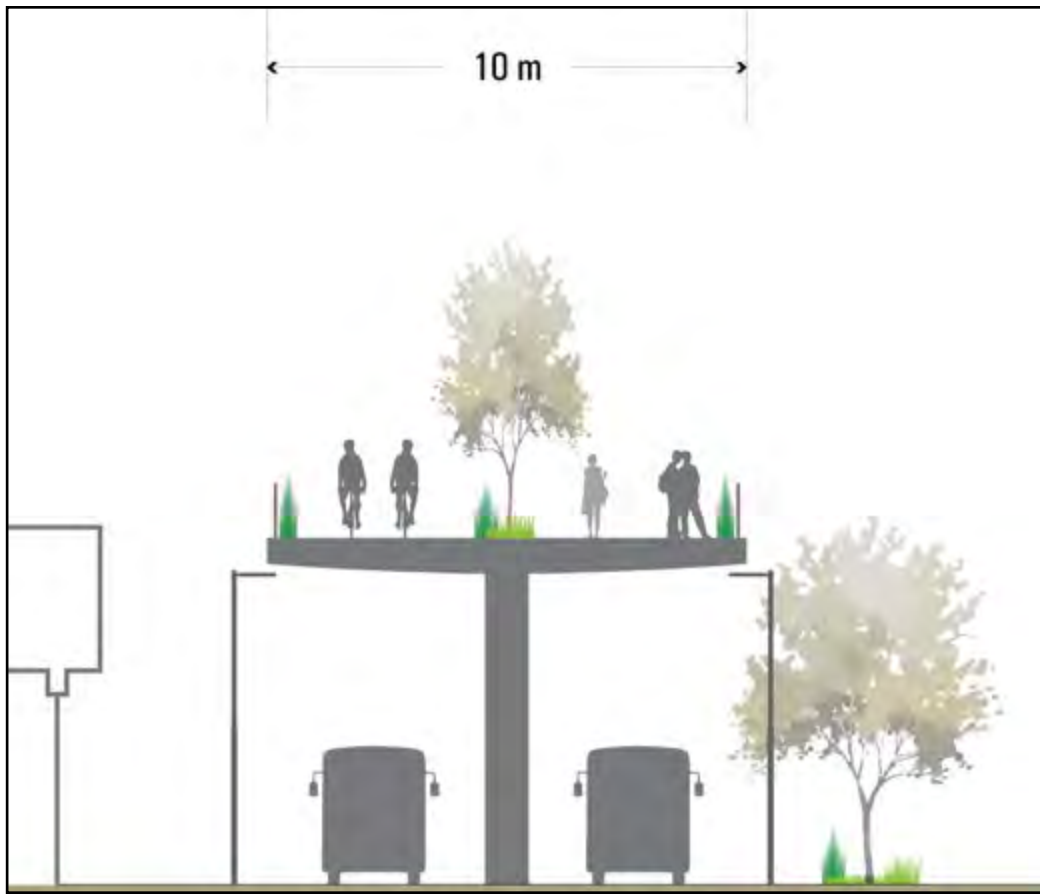
- Enhance existing, and create safe, animated, new connections to the adjacent neighbourhoods that will further emphasize a sense of public ownership and improve access to (from), within, and through the site.



Tunnel to Billy Bishop Airport, Toronto
Credit: Rick Madonik, www.thestar.com



Cyclists on Martin Goodman trail, Toronto
Credit: Arleigh Jenkins, www.bikelaw.com



Elevated promenade concept
Credit: City of Toronto

What do you think about this guiding principle? Please write your answers on sticky notes and place them here.

Guiding Principles and Analysis

Removing Barriers/ Making Connections/ Prioritizing Transit

Accommodate emerging mobility technologies, innovations, and services in a manner which complements transit and active transportation priorities.

- Explore testing and implementation of shuttle technologies complementary to higher order transit and active transportation, which can facilitate first/last mile connections;
- Establish appropriate sizing and locations for ridesharing and ride hailing pick-up and drop-off facilities;
- Consider the site broadly as a “Transportation Innovation Zone”, which could help showcase and accelerate proofs of concept for various emerging mobility technologies.



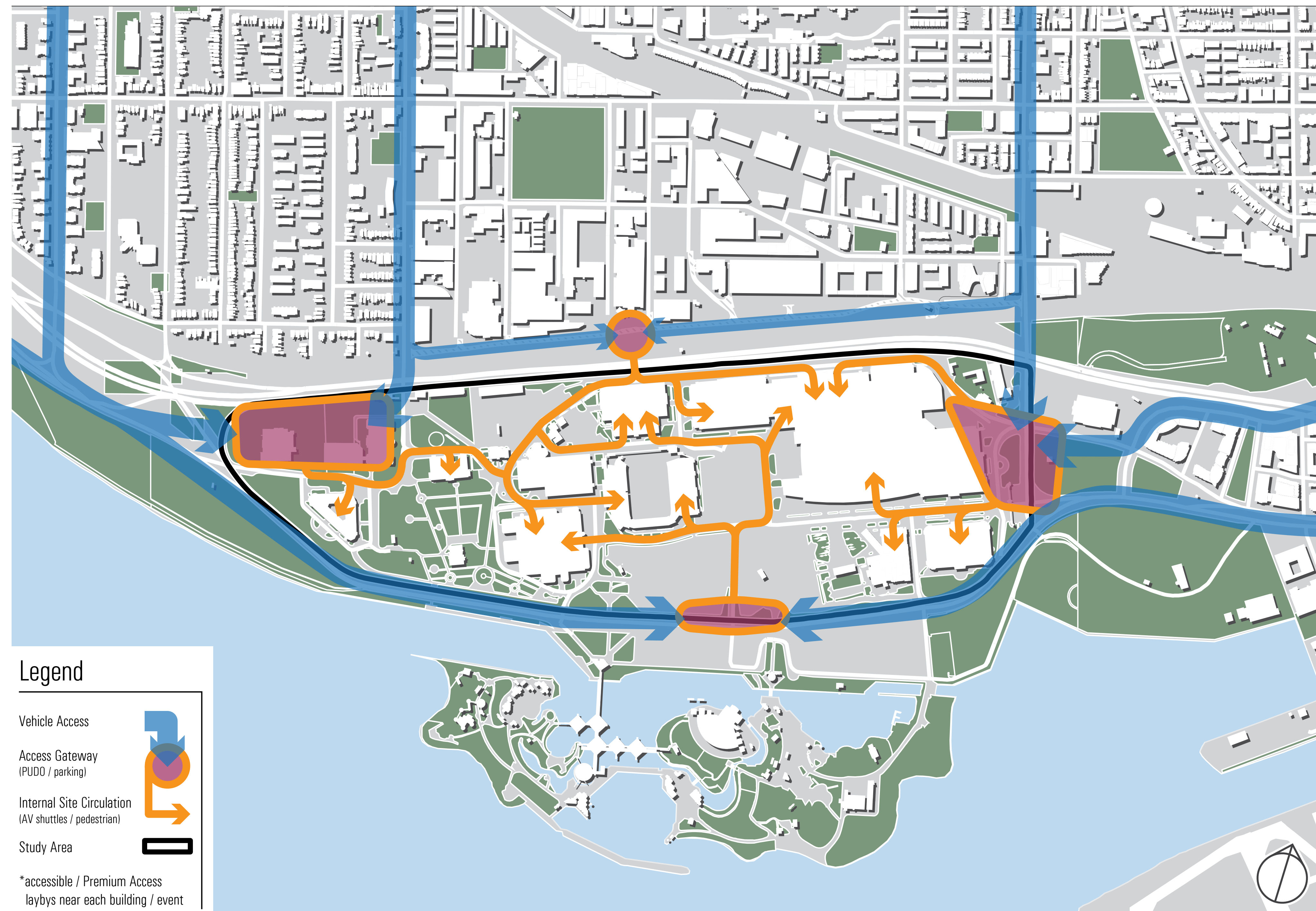
Ride sharing signage, San Francisco
Credit: CBS SF Bay Area, www.youtube.com



Automated shuttle, Montreal
Credit: Frank Mignacca, www.cbc.ca



E-scooters
Credit: David Paul Morris,
www.theatlantic.com



What do you think about this guiding principle? Please write your answers on sticky notes and place them here.

Guiding Principles and Analysis

Removing Barriers/ Making Connections/ Prioritizing Transit

Connect to the adjacent communities and create a better relationship to the rest of the City

- Enhance Exhibition Place's role in offering reprieve from city life through the reinforcement of its strong identity, encouraging site exploration and ease of access as a public place and waterfront asset within the City of Toronto

- Options to explore:

A. North

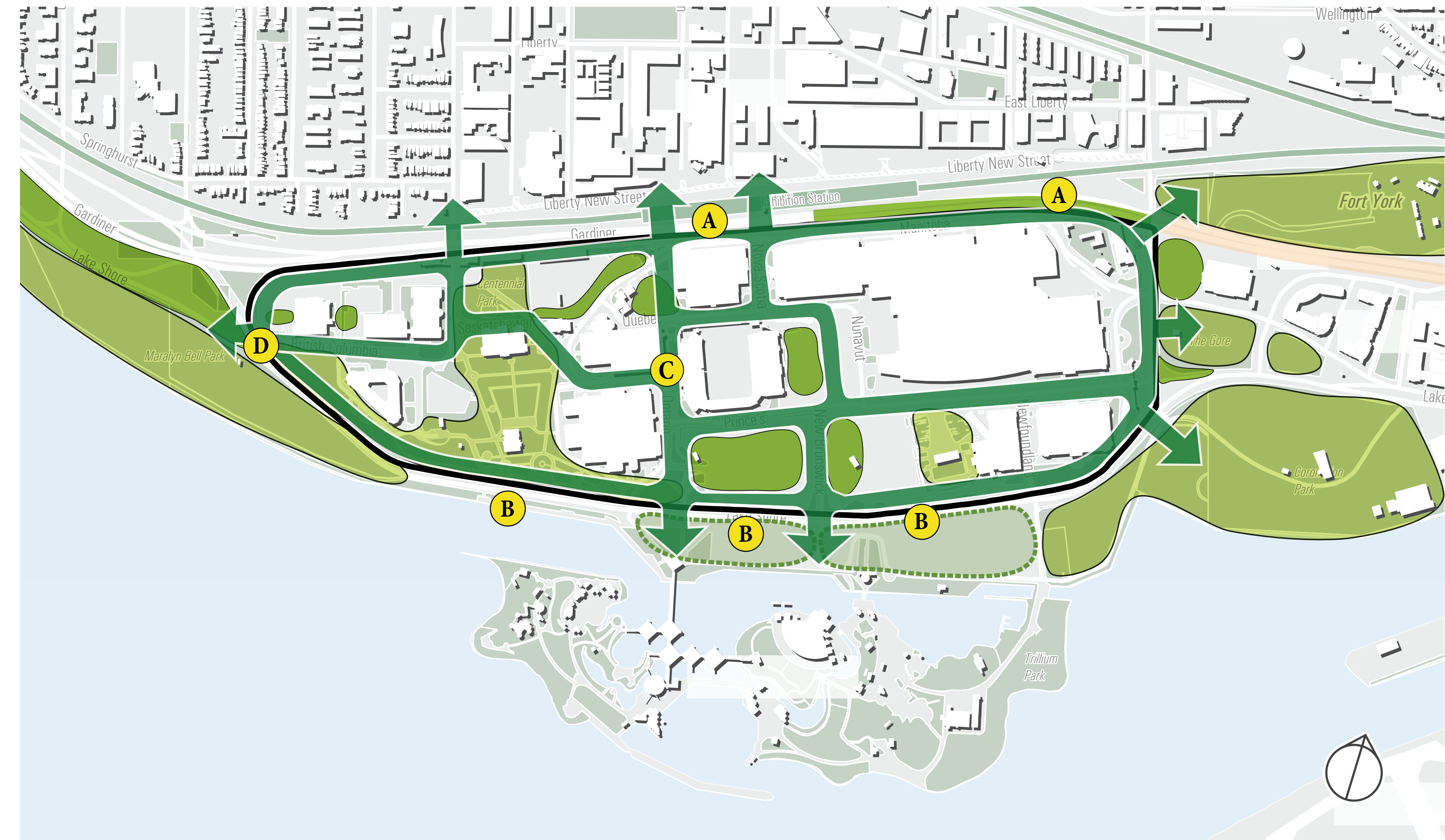
- Extend the Bentway
- Create integrated transit hub and Liberty Village connection

B. South

- Deck over Lake Shore Blvd
- Redesign Lake Shore Blvd and adjacent conditions

C. Create a north-south elevated multi-use promenade through the site

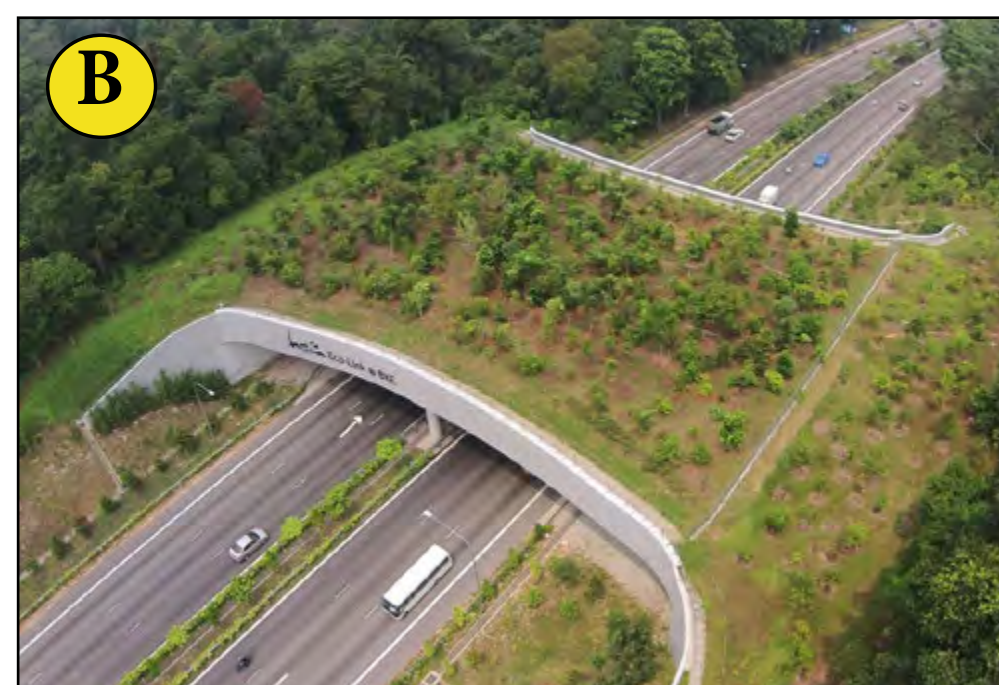
D. Western Gateway – consolidate Lake Shore Blvd, and improve connection to South Parkdale and an expanded Marilyn Bell Park



The Bentway
Source: <https://dailyhive.com>



Queen's Quay, Toronto
Source: City of Toronto



Eco Bridge, Netherlands
Source: <https://www.indiatoday.in>



Example of treating the edges of the boulevard



Highline, NYC
Source: wikipedia - image by Beyond My Ken



Parc Jeanne-Mance, Montreal
Source: Tourisme Montréal - Madore - Daphné CARON

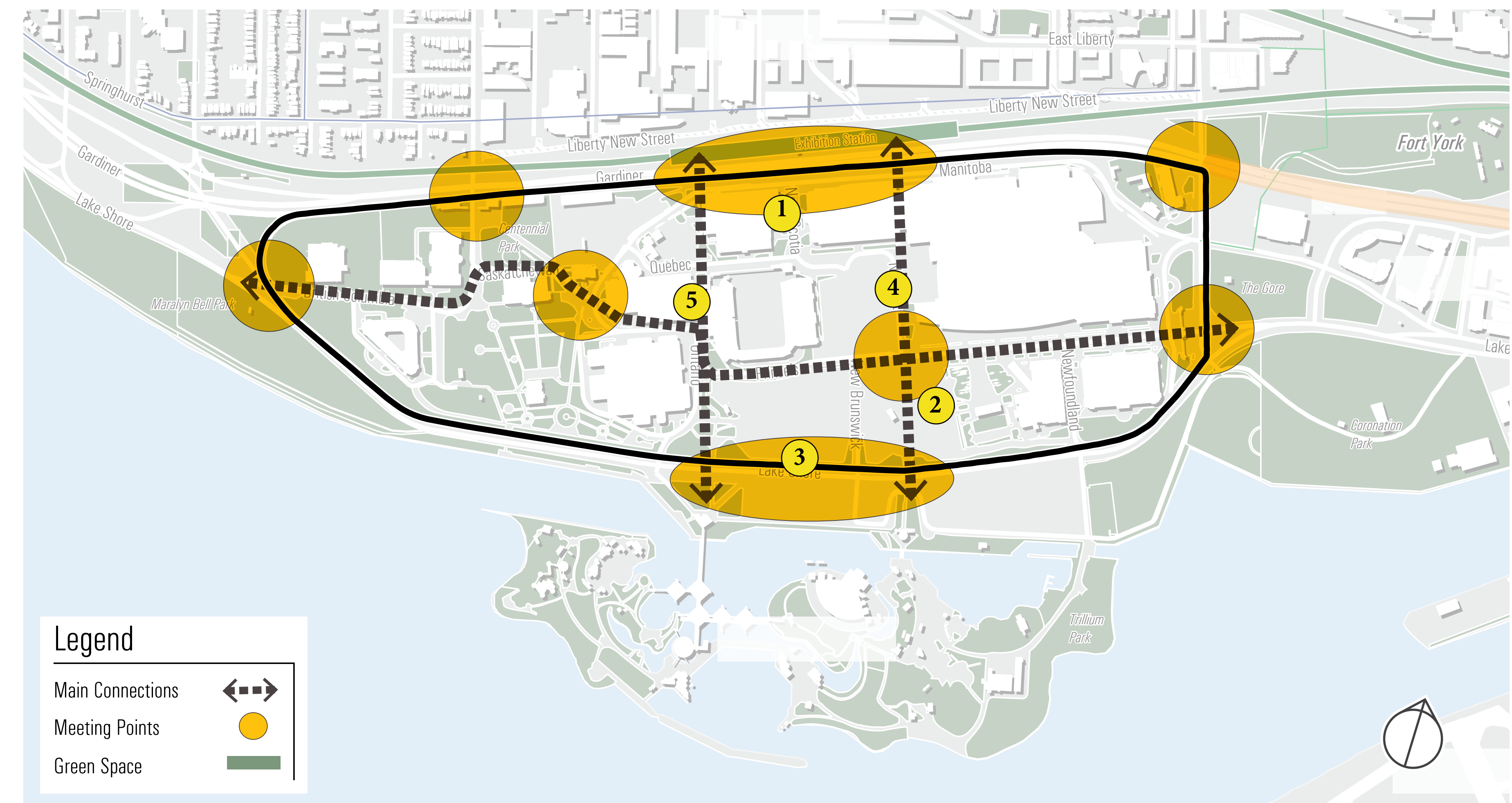
What do you think about this guiding principle? Please write your answers on sticky notes and place them here.

Guiding Principles and Analysis

Building a Network of Spectacular Waterfront Parks & Public Spaces

Create a continuous green network by enhancing the public realm and maximizing green open space

- Improve and strengthen the quality and public awareness of the site's urban public park program through the extension and creation of new public park uses to replace degraded open spaces;
- Define, develop and enhance key meeting places throughout the site to emphasize existing landmarks;



Transit Hub
Source: <http://www.metrolinx.com>



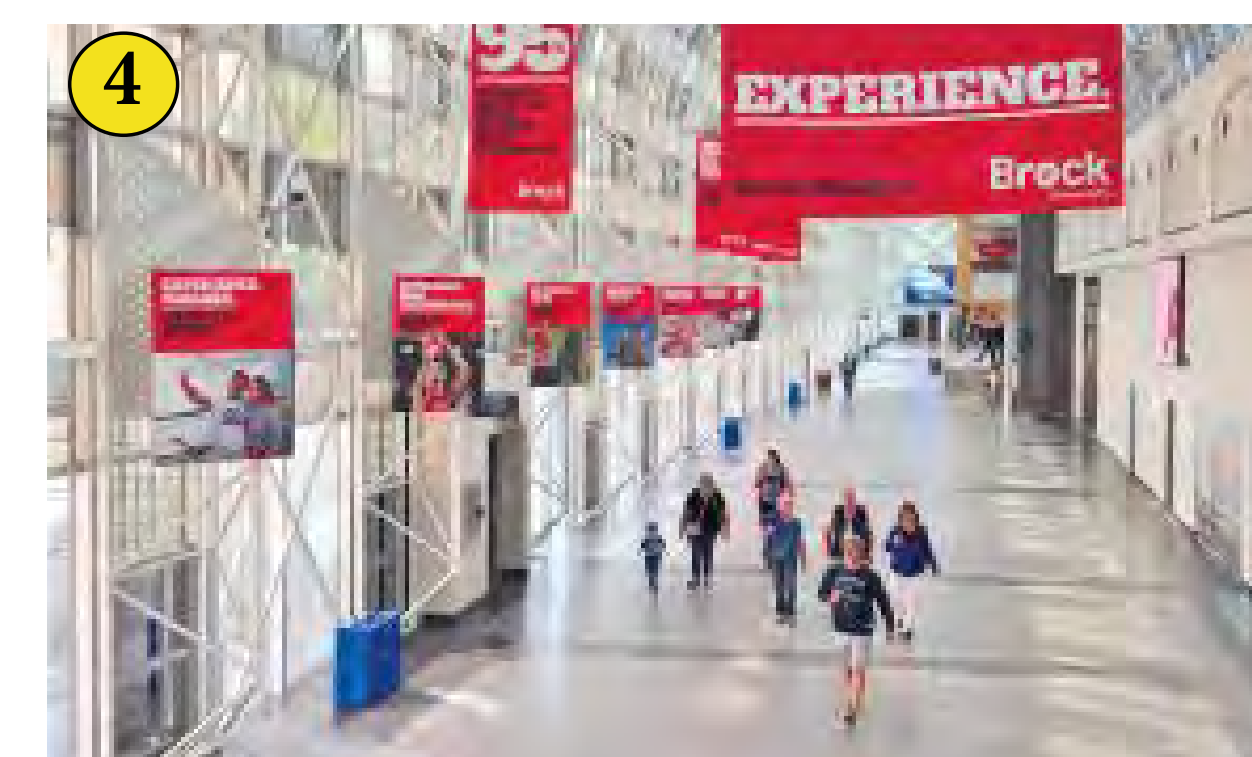
Sherbourne Common, Toronto
Source: <https://www.archdaily.com>



Park in Cleveland
Source: <https://coolcleveland.com>



St. George Open-air Cinema, Sydney
(meeting places)



Toronto's Interior Skywalk Connection Source: <https://brocku.ca>



Philadelphia Rail Park
Source: <https://www.centercityphila.org>

What do you think about this guiding principle? Please write your answers on sticky notes and place them here.