

Why Are We Here?

NEXT PLACE

Exhibition Place Master Plan

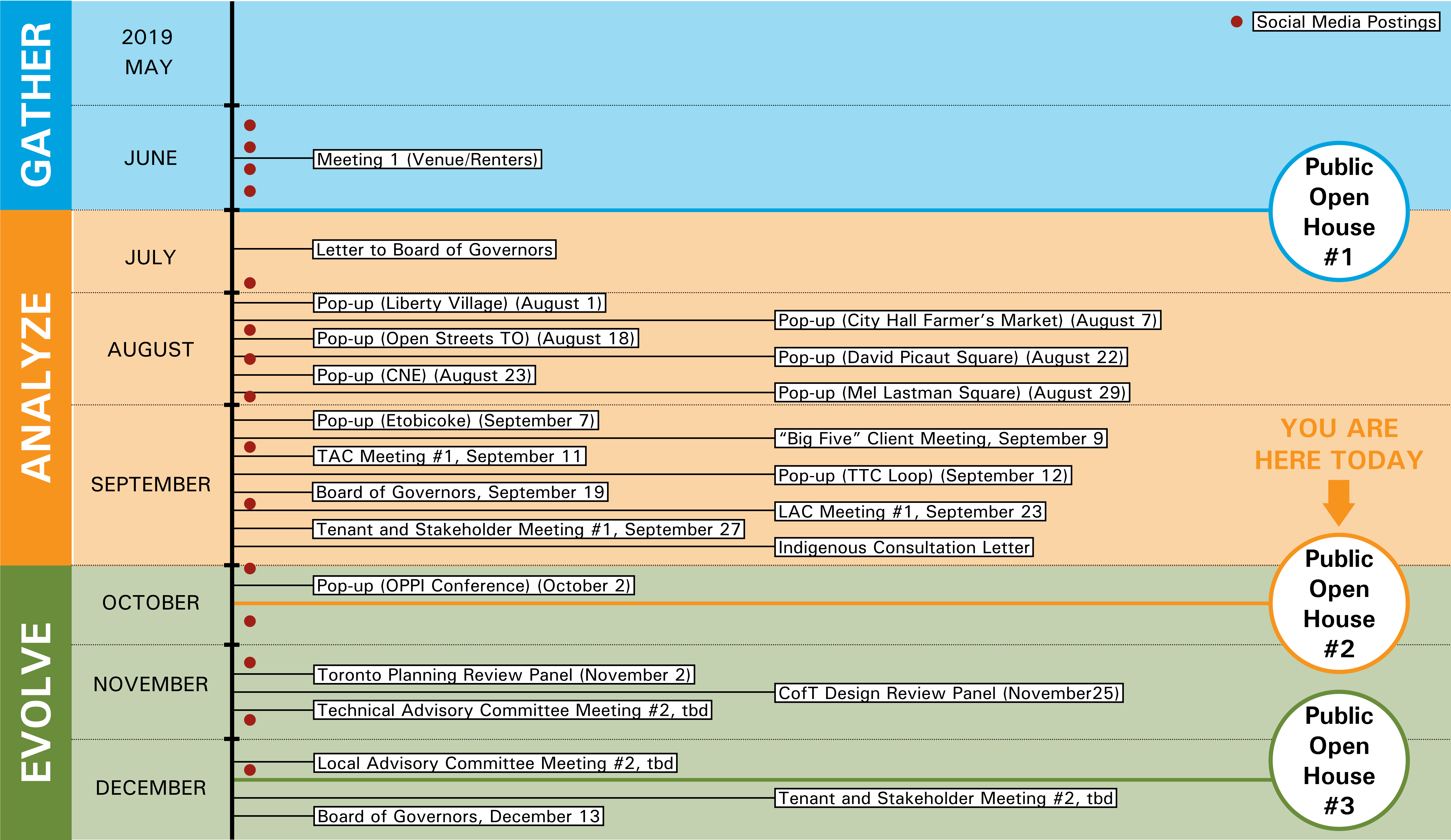
Staff have been directed by Toronto City Council to undertake a master plan for the Exhibition Place Lands, under the guidance of the Cultural Heritage Landscape Assessment (CHLA) and in collaboration with the Province. The goal is to complete the preliminary plan by the end of this year.

The Province has issued a 'Call for Development' for the revitalization of Ontario Place, with proponent submissions closed in September 2019. It's important for the Exhibition Place Master Plan to be adaptable to respond to the outcomes of that process.



Bird's Eye View towards Exhibition Place

Where Are We



Public Engagement (What we heard)

NEXT PLACE Exhibition Place Master Plan

NEXT PLACE

Public Open House #1 Summary

City Planning held an Open House on June 25, 2019 to engage with the public and seek preliminary input and ideas for the Exhibition Place Master Plan. The open house included three overview presentations with opportunities for questions and comments from the public.

Describe the future of Exhibition Place

Communal Inclusive
Sustainable Adaptable Exciting
Connected Transformed A place to go
Vibrant Authentic Year round activities
Fascinating Collective space to share
Indigenous and grow Realm
history site Remained owned by
Toronto

8 Most Discussed Themes

- More Green Space
- Better Integration with Ontario Place
- More Public Use of Heritage Buildings
- More Activities for the Community
- Attractions for Children
- More Food Options
- Keep CNE and Royal Winter Fair
- Better Public Access

3 Most Favourite Times to Visit

- CNE
- Royal Winter Fair
- Weekend



5 Most Favourite Places to Visit

- Horticulture Building
- Horse Palace
- Princes' Gates
- BMO Field
- Enercare Centre

45 People Attended the Open House



How do you travel to and from Exhibition Place?

- 37% Walk
- 24% TTC
- 20% Bike
- 7% Car
- 7% Go Train
- 5% Uber/ Lyft/ Other

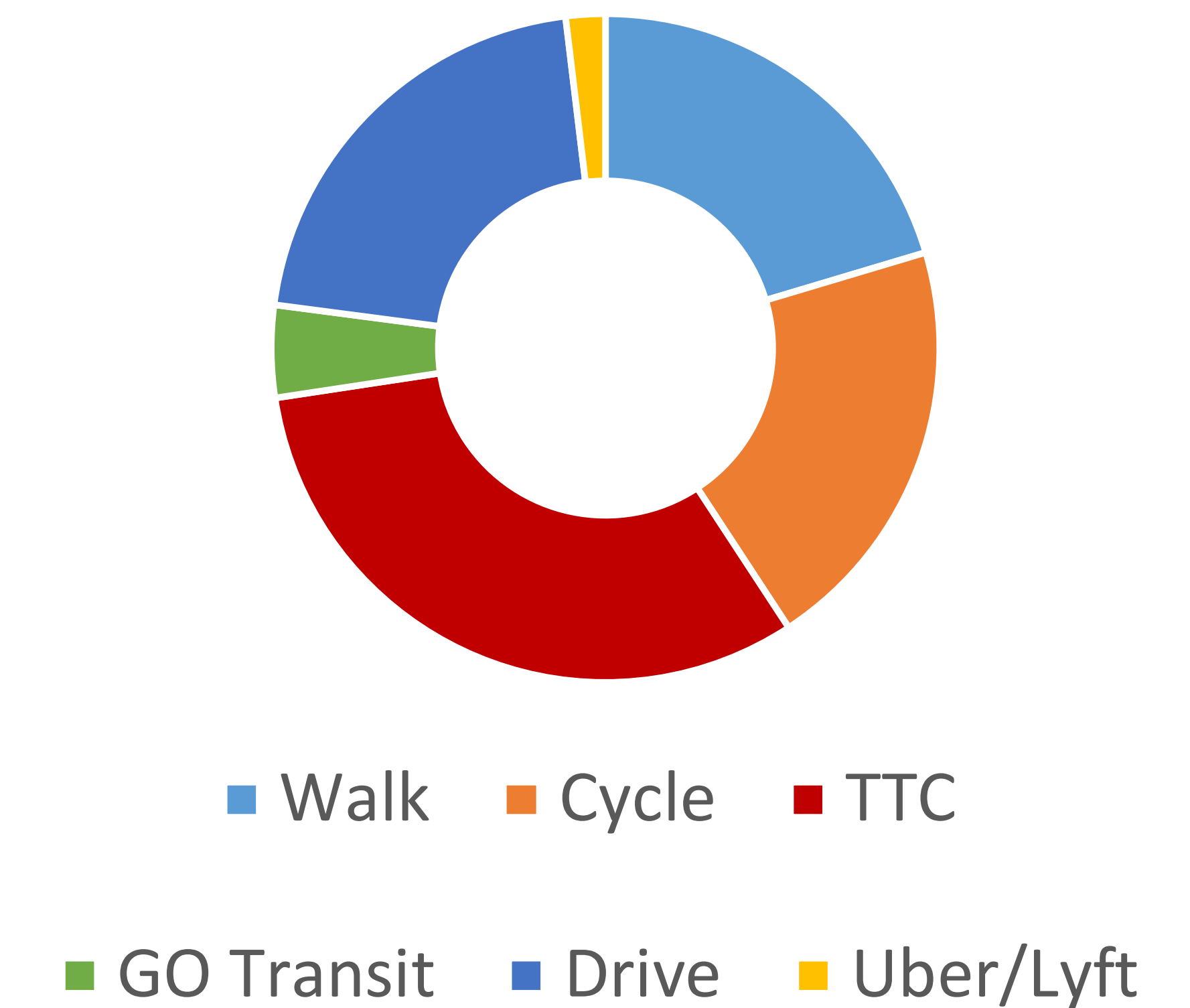
Online Survey

- Launched August 1st, 2019
- 150+ responses to date
- Will remain open through December

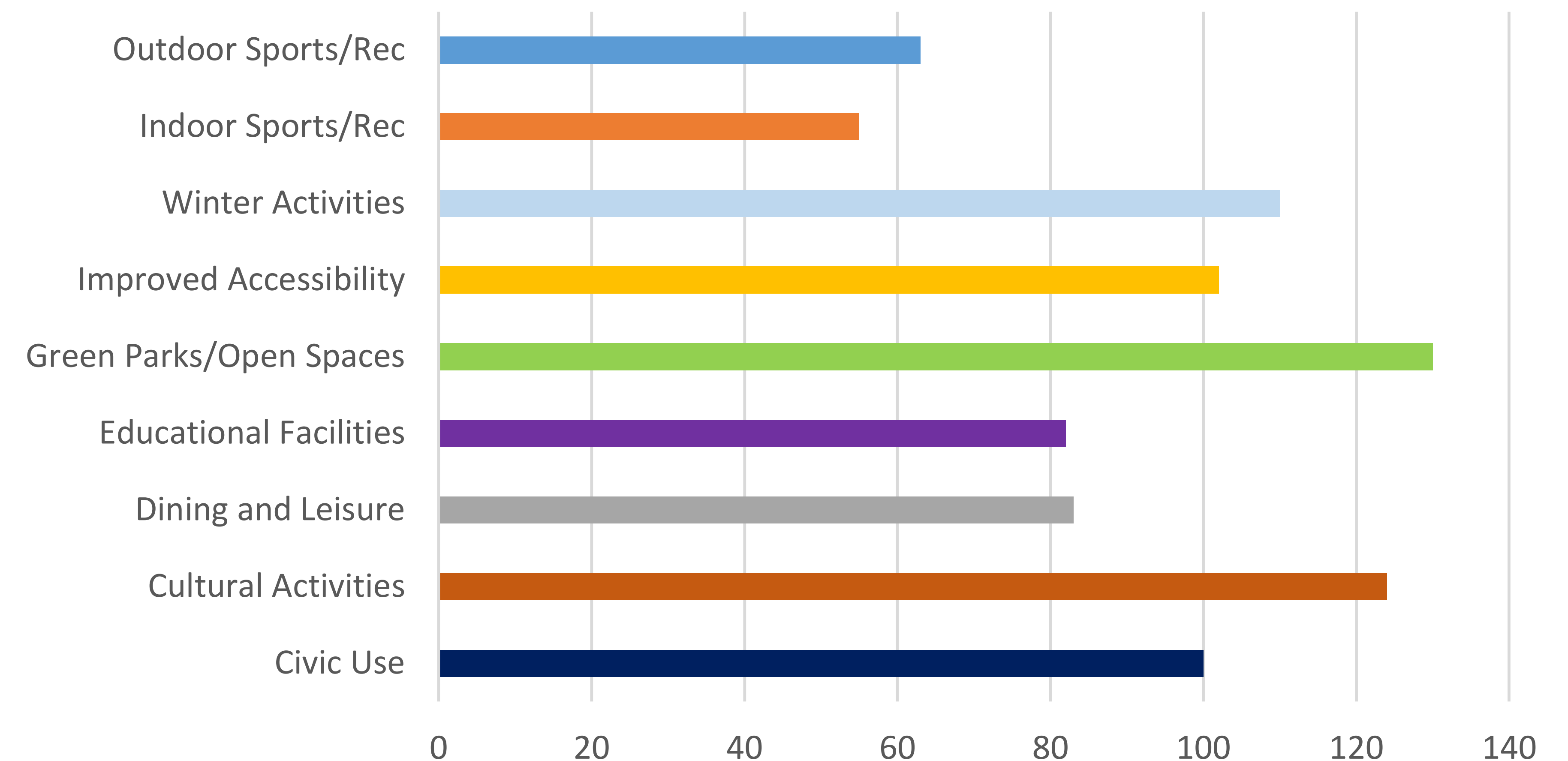
Other ideas...

- Most respondents would like to be able to enjoy Exhibition Place year-round
- Market Hall
- Music Festivals
- Pedestrian-only space
- Better integration with Ontario Place
- Keep it public

How do you typically get to Exhibition Place?



What would bring you back to Exhibition Place more often?



Public Engagement (What we heard)

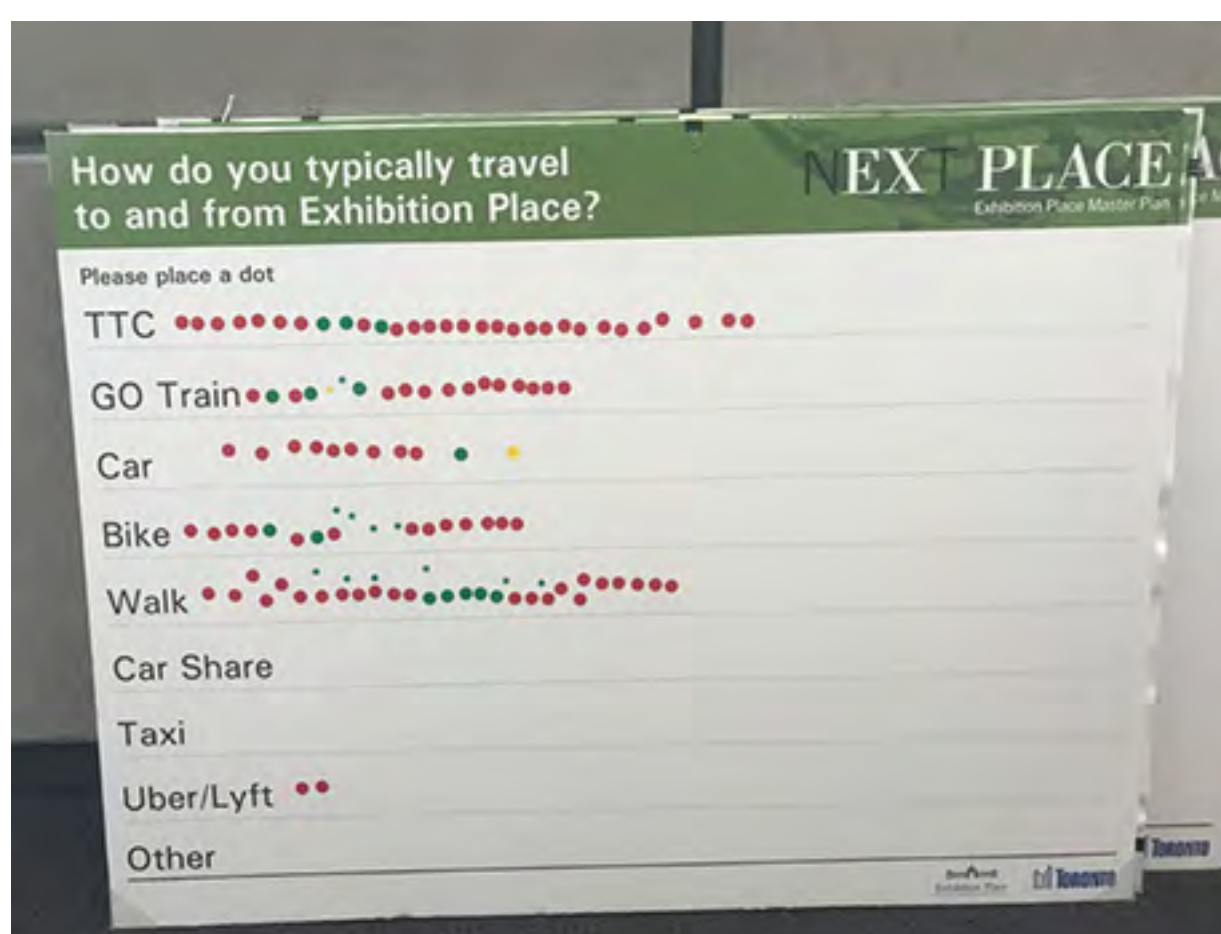
NEXT PLACE

Exhibition Place Master Plan

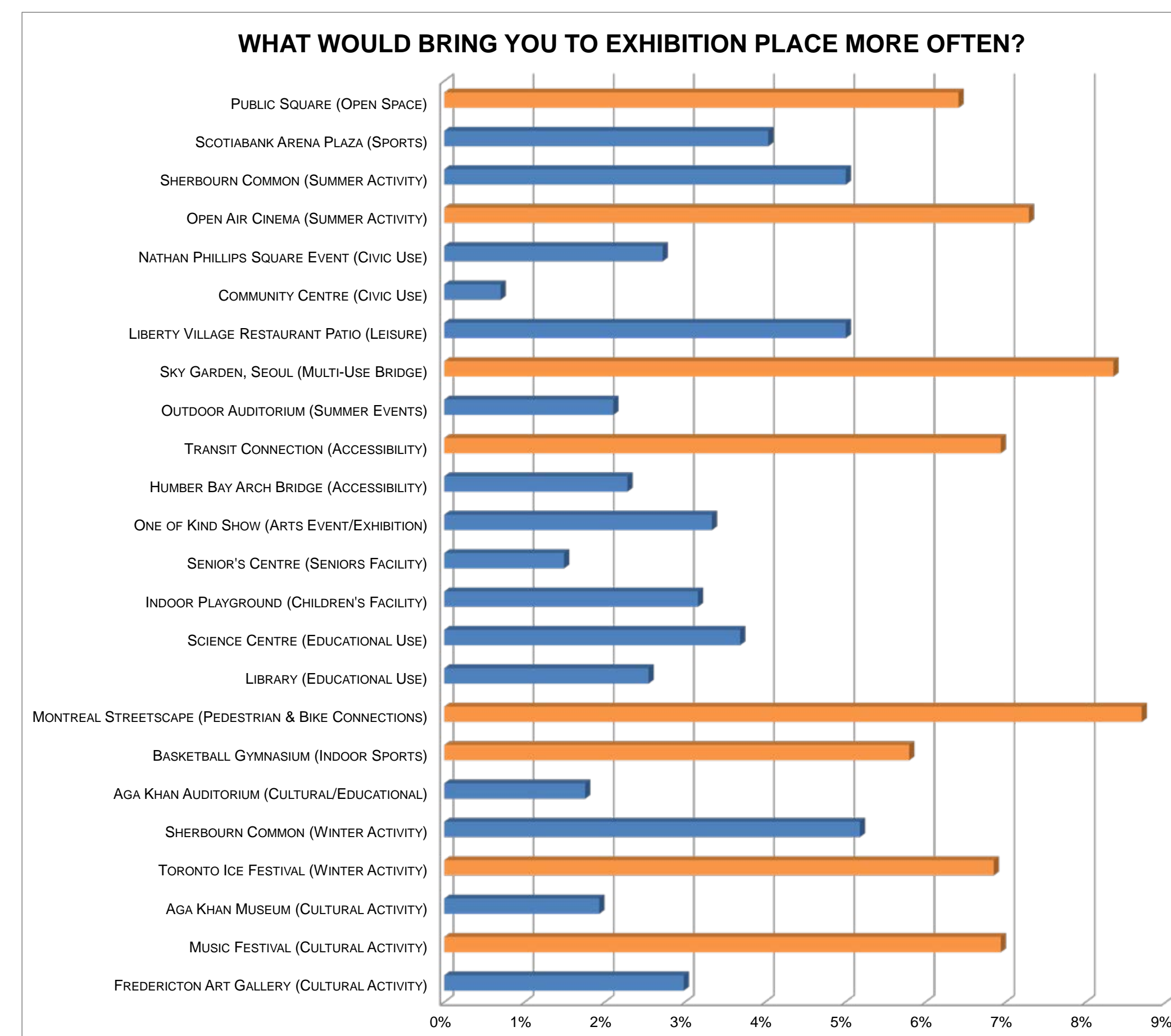


Pop-Ups

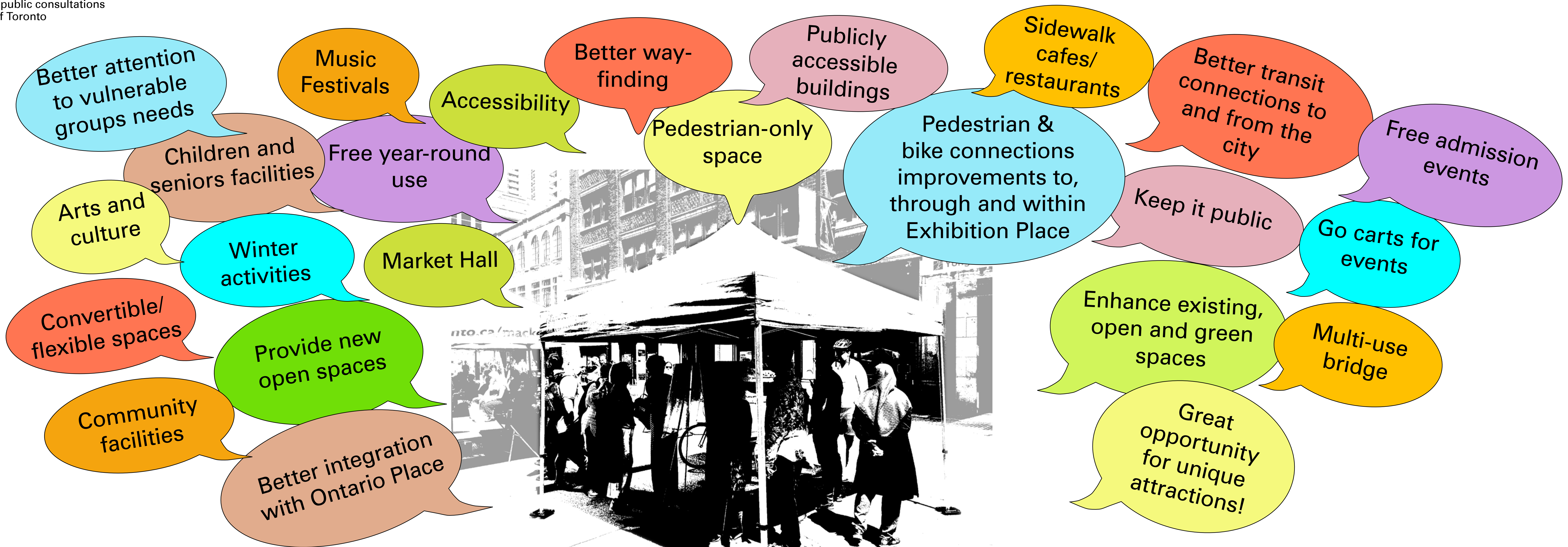
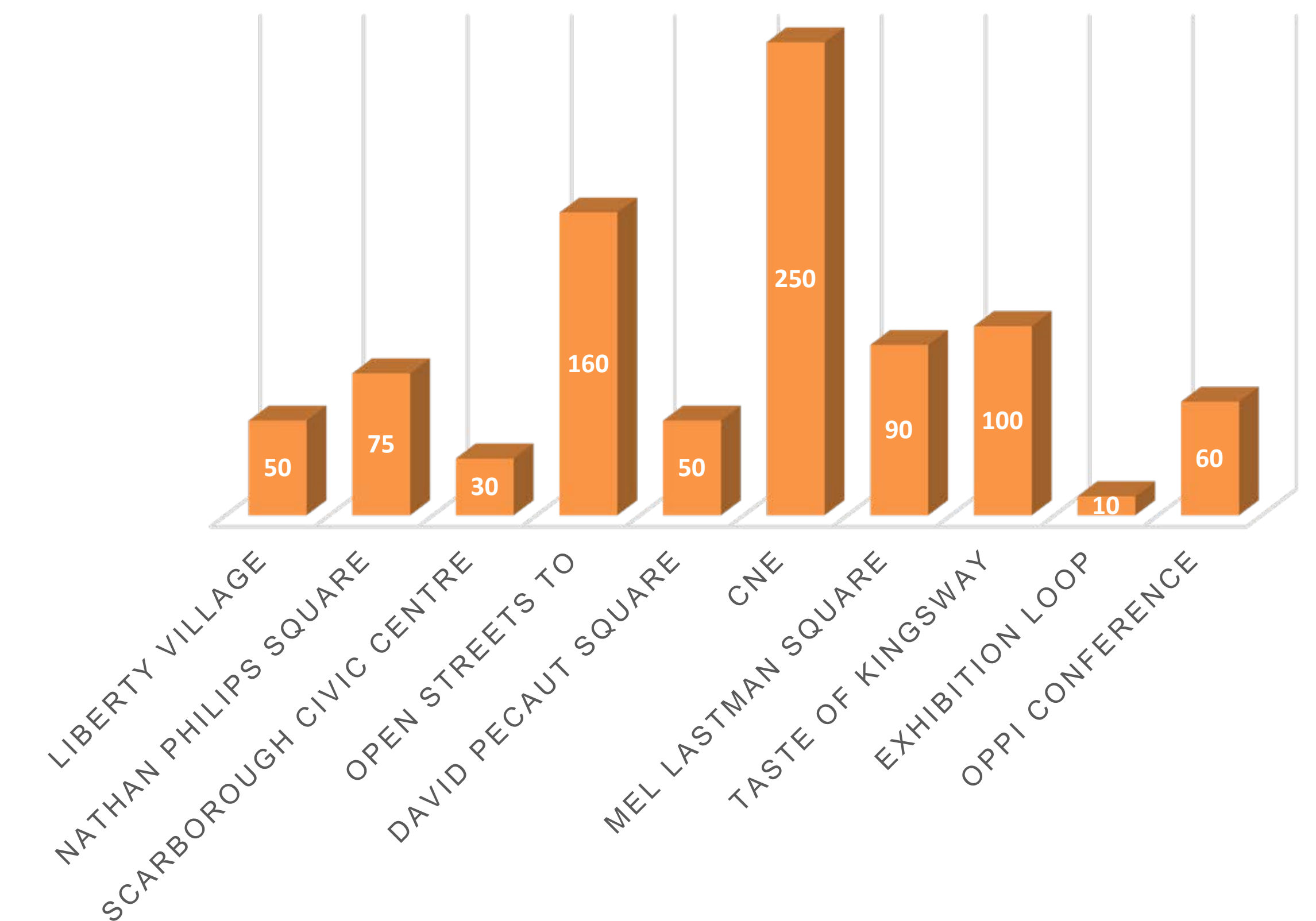
- 10 pop-ups held
- 870+ connections made



Images of the public consultations
Source: City of Toronto



CONNECTIONS WITH PEOPLE

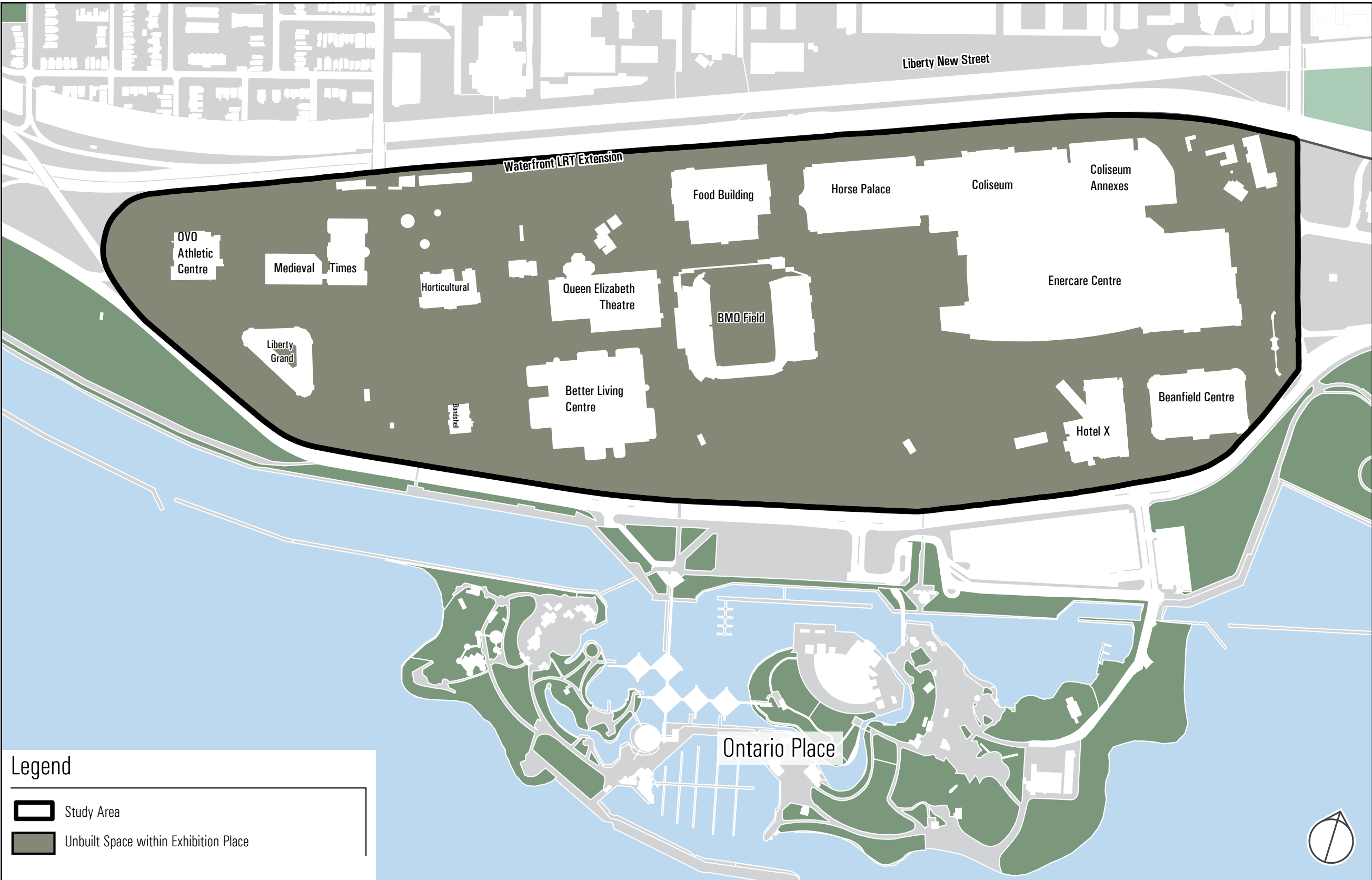


Strengths, Weaknesses, Opportunities, Potentials (SWOP) Analysis

NEXT PLACE

Exhibition Place Master Plan

Strengths - Map 1



West side of Princes' Boulevard



Enecare Centre



Existing Surface Parking



Strengths - Map 2



Open Space next to X Hotel



Landscape and Liberty Grand



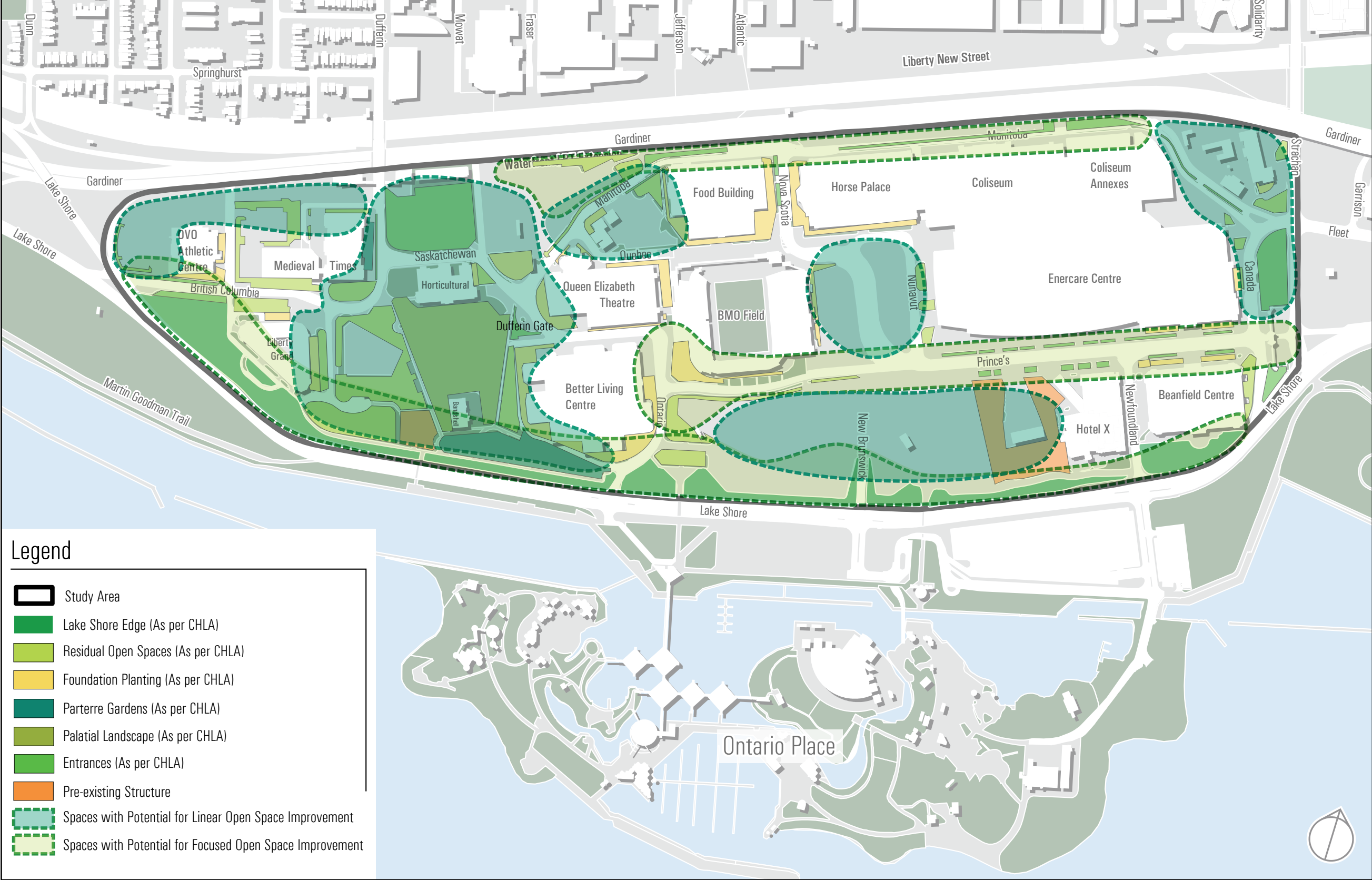
Bandshell



The majority of the site area is not occupied by buildings, but with streets, connections, landscaped area and open spaces. The ratio of the area that has building footprint vs the area with no building footprint is approximately 25% to 75%. This means that there is a great opportunity for major events, enhanced open spaces, movement and servicing.

A part of this existing open space is covered by historic and cultural landscape with a variety of design elements, which adds to the heritage value of the site as an important part of Toronto's history. This, in combination with the rich heritage fabric creates a strong sense of place for Exhibition Place.

Strengths - Map 3



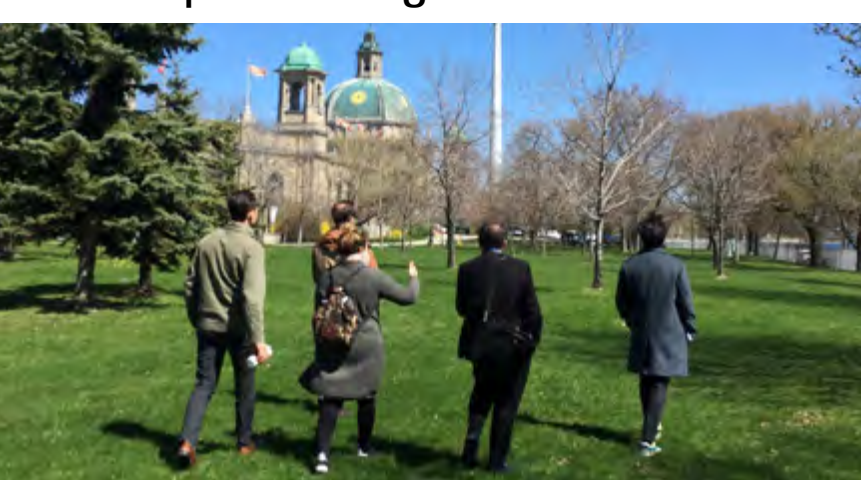
Princess Margaret Fountain



A Segment of the Streetscape along Princes' Blvd



Green Space along Lake Shore Blvd



Weaknesses (Challenges)



Gardiner Expressway



Entrance along Nova Scotia Road



Lake Shore Blvd W and Fences



The conservation and expansion of these open spaces, along with enhancing the streetscape conditions can strengthen the image of Exhibition Place.

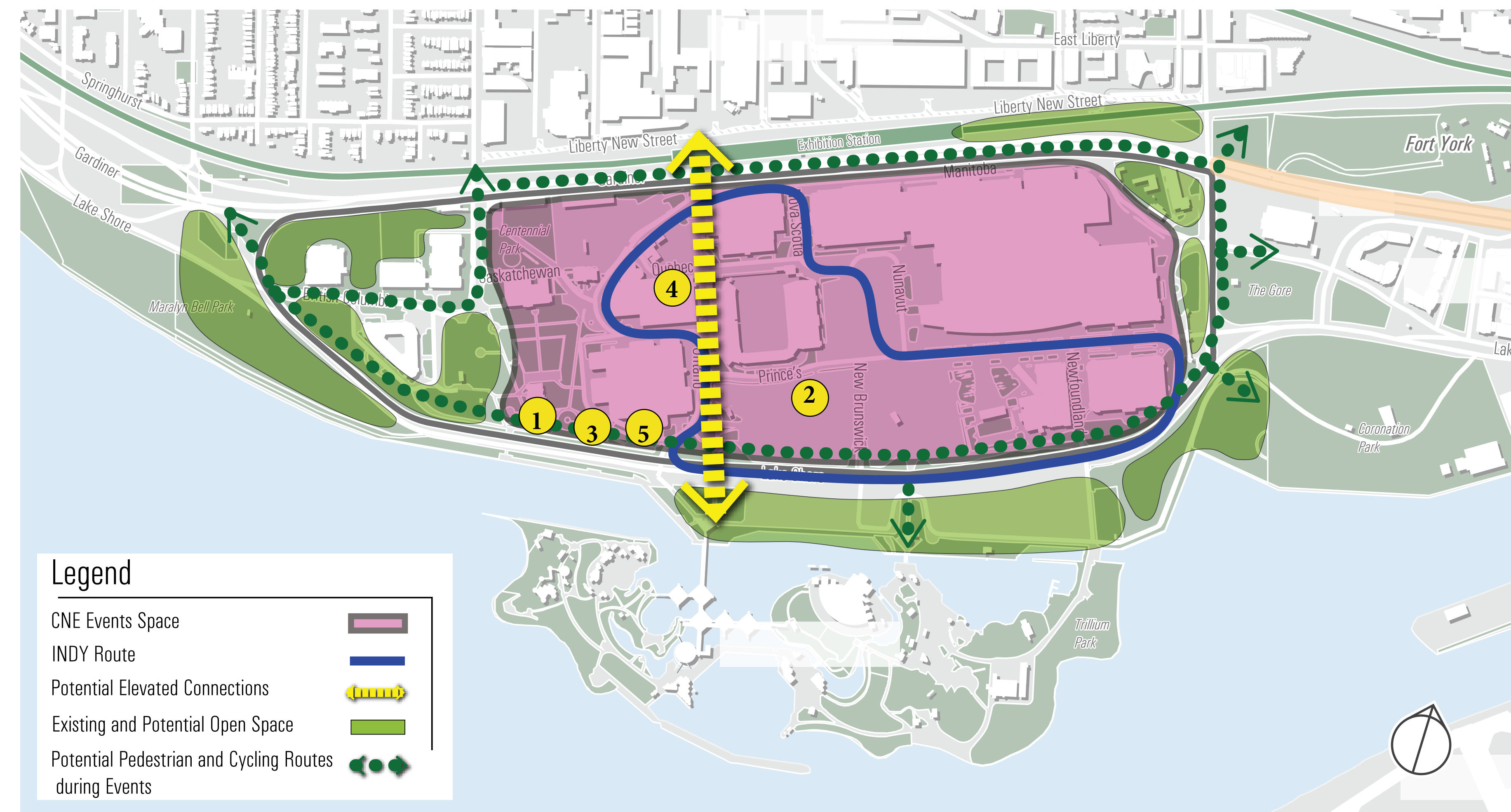
Exhibition Place is very much disconnected from the surrounding communities, streets and neighbourhoods due to the Gardiner Expressway and railway to the north and the fences on the south side and along Lake Shore Blvd W to the south.

Guiding Principles and Analysis

Building a Network of Spectacular Waterfront Parks & Public Spaces

Create a continuous green network by enhancing the public realm and maximizing green open space (Cont'd)

- Connect existing and future green spaces into a continuous parkland network that provides pedestrian and bicycle connections and various recreational opportunities, while also maintaining circulation during major events;
- Enhance the public realm network to provide for safe and direct movement of large crowds entering and exiting Exhibition Place;



1
Larnaca Salt Lake
Source: www.cyprusconferences.org



2
CNE Event at Exhibition Place
Source:



3
Philadelphia waterfront
Source: <https://www.pinterest.ca/visitphilly>



4
Sky Garden, Seoul
Source: <https://www.urbangardensweb.com>



5
Riverwalk, Chicago, IL
Source: <https://www.choosechicago.com>



10th and 17th Avenue, NYC
Credit: bbaunach on Flickr

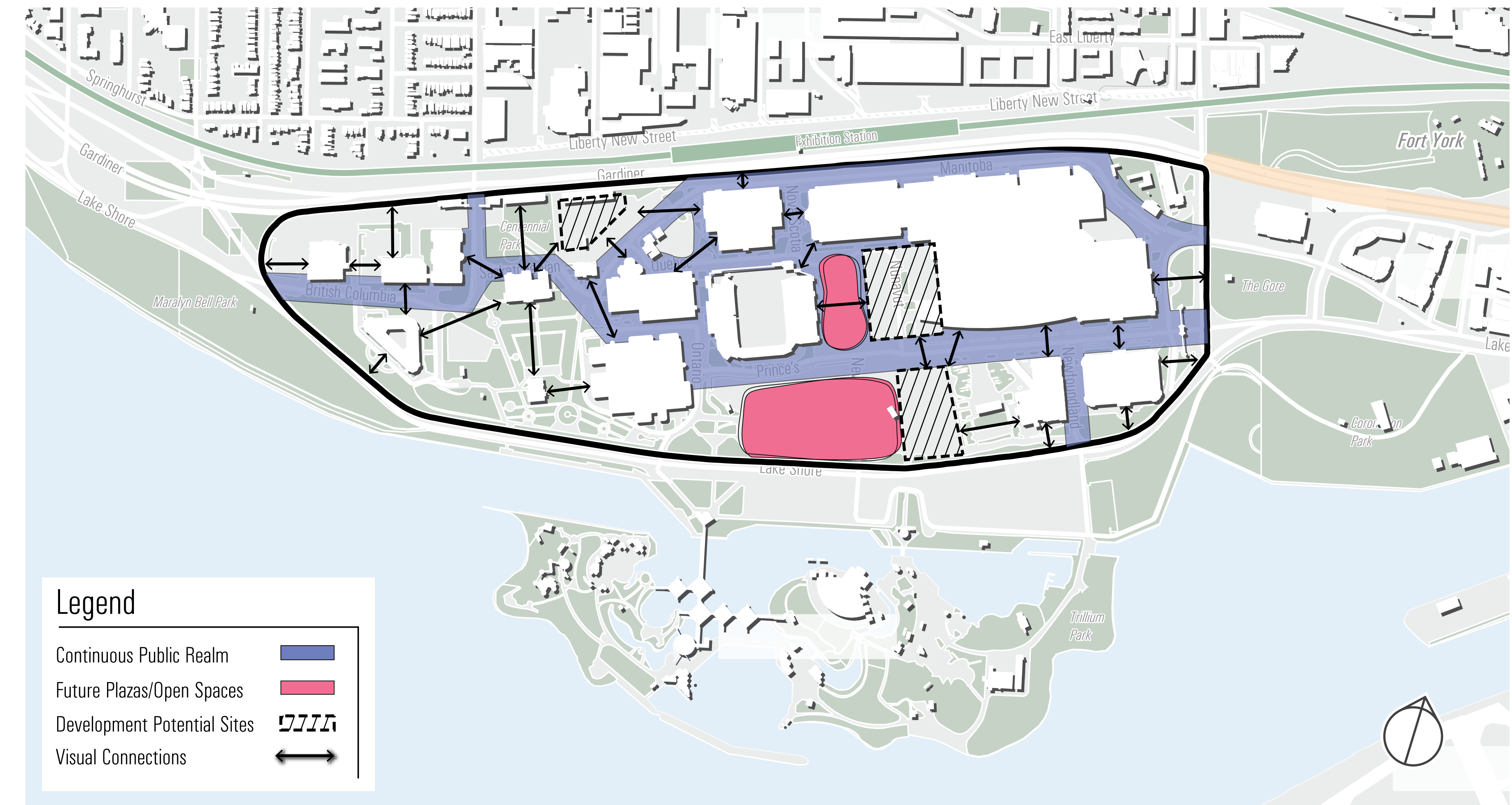
What do you think about this guiding principle? Please write your answers on sticky notes and place them here.

Guiding Principles and Analysis

Building a Network of Spectacular Waterfront Parks & Public Spaces

Create a continuous green network by enhancing the public realm and maximizing green open space (Cont'd)

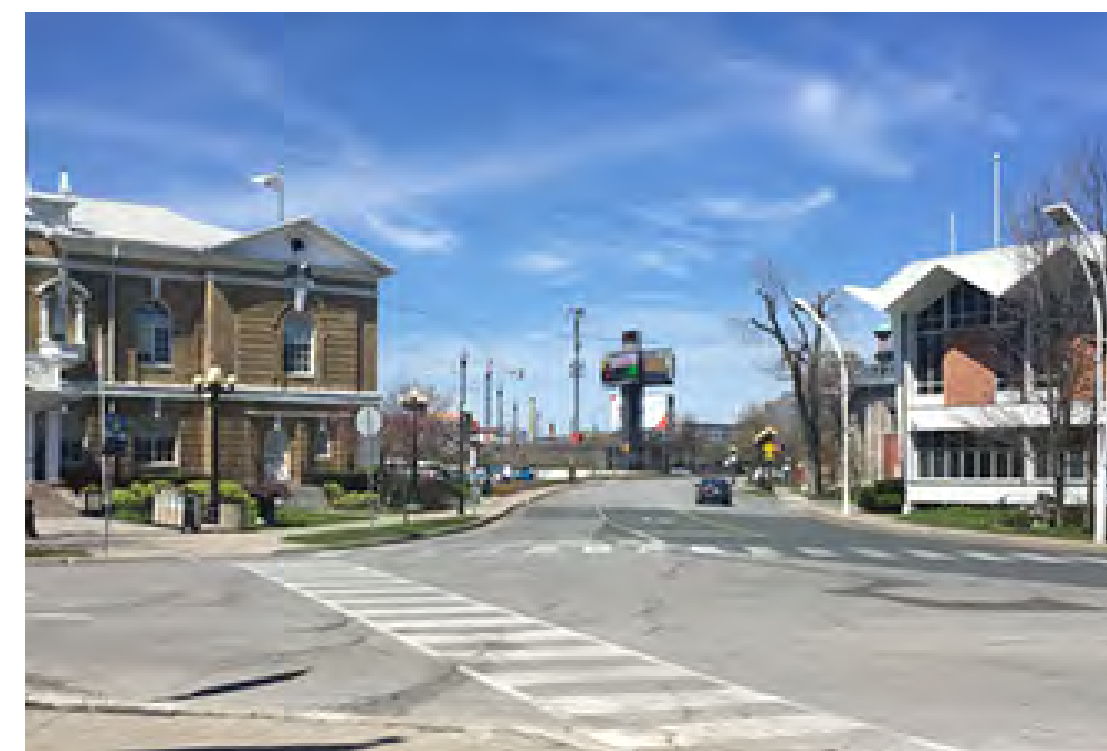
- Improve the public realm network to create better connections between existing buildings, landmarks, and destinations while protecting key views and reinforcing the four-sided nature of buildings;
- Rehabilitate Exhibition Place in a manner that maintains and enhances its flexibility of year-round public uses and leverage these uses for the enhancement of the site as a whole;
- Promote shared space for different modes of transportation.



Sherbourne Common
Source: <http://blog.waterfronttoronto.ca/>



The Ephemeral Outdoor Auditorium, Spain
Source: <https://www.metalocus.es>



Important views between existing buildings to be preserved.



Monderman's Design of Shared Space
Source: <https://heavenly-holland.com>



Parklette in NYC
Credit: wkgold on Flickr



Exhibition Road Show, London
Credit: James Medcraft

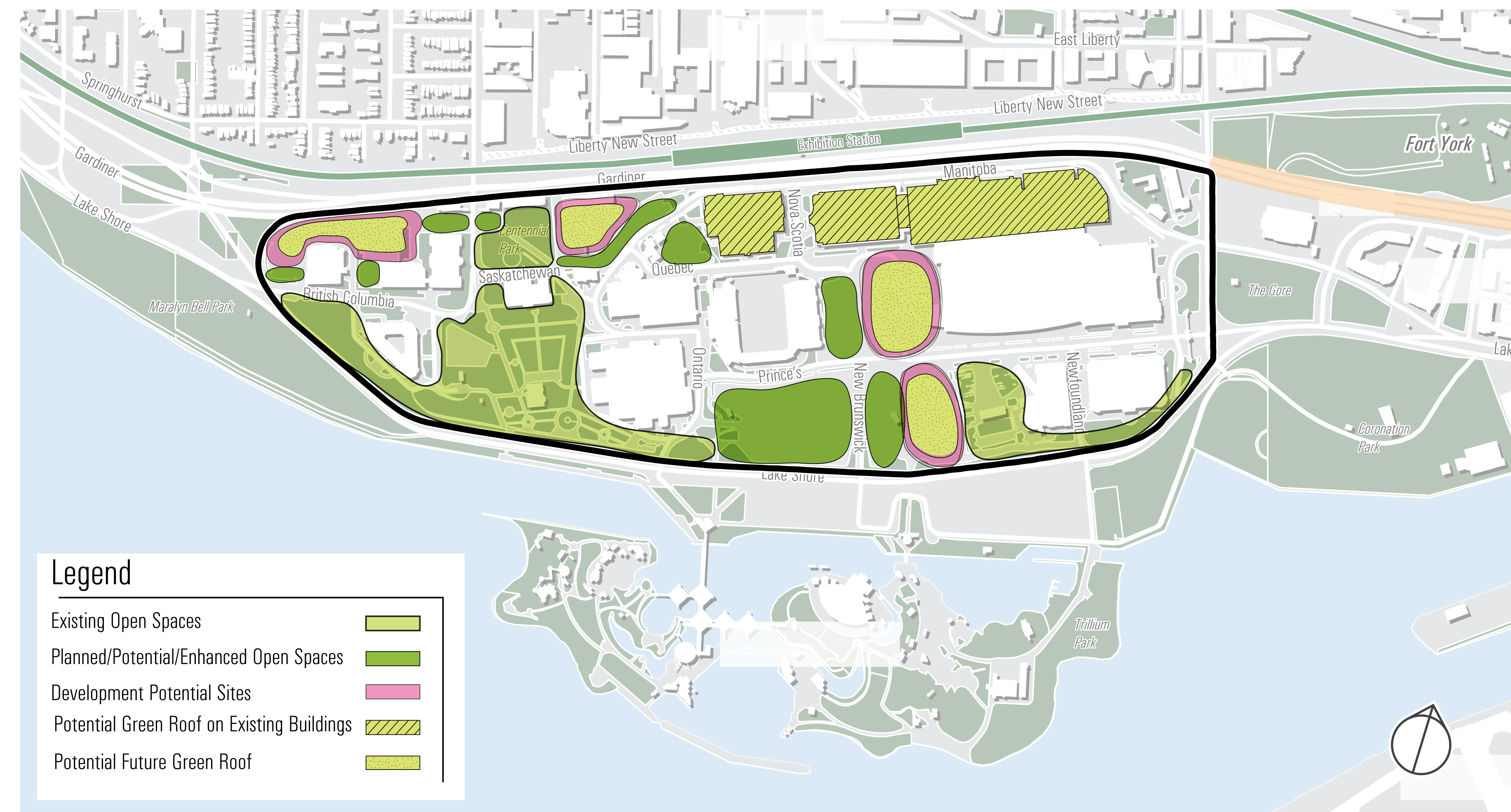
What do you think about this guiding principle? Please write your answers on sticky notes and place them here.

Guiding Principles and Analysis

Promoting a Clean & Green Environment

Build in Resilience

- Implement the Exhibition Place Green Strategy to reduce environmental impact;
- Integrate Low Impact Development practices to promote environmental sustainability;
- Consolidate/ relocate/ reduce surface parking;
- Create flexible open public spaces and multi-purpose structures to support various seasonal programming and peak event needs;
- Design open spaces that can be easily converted from daily use to hosting large events and festivals, including installation of the annual CNE Midway.



Yonge closure during Pride Parade
Source: Scott Corman - <https://dailyhive.com>



City of Toronto Green Roof
Source: <https://www.deepproot.com>



Green Surface Parking
Source: <http://www.compagniedupaysage.com>

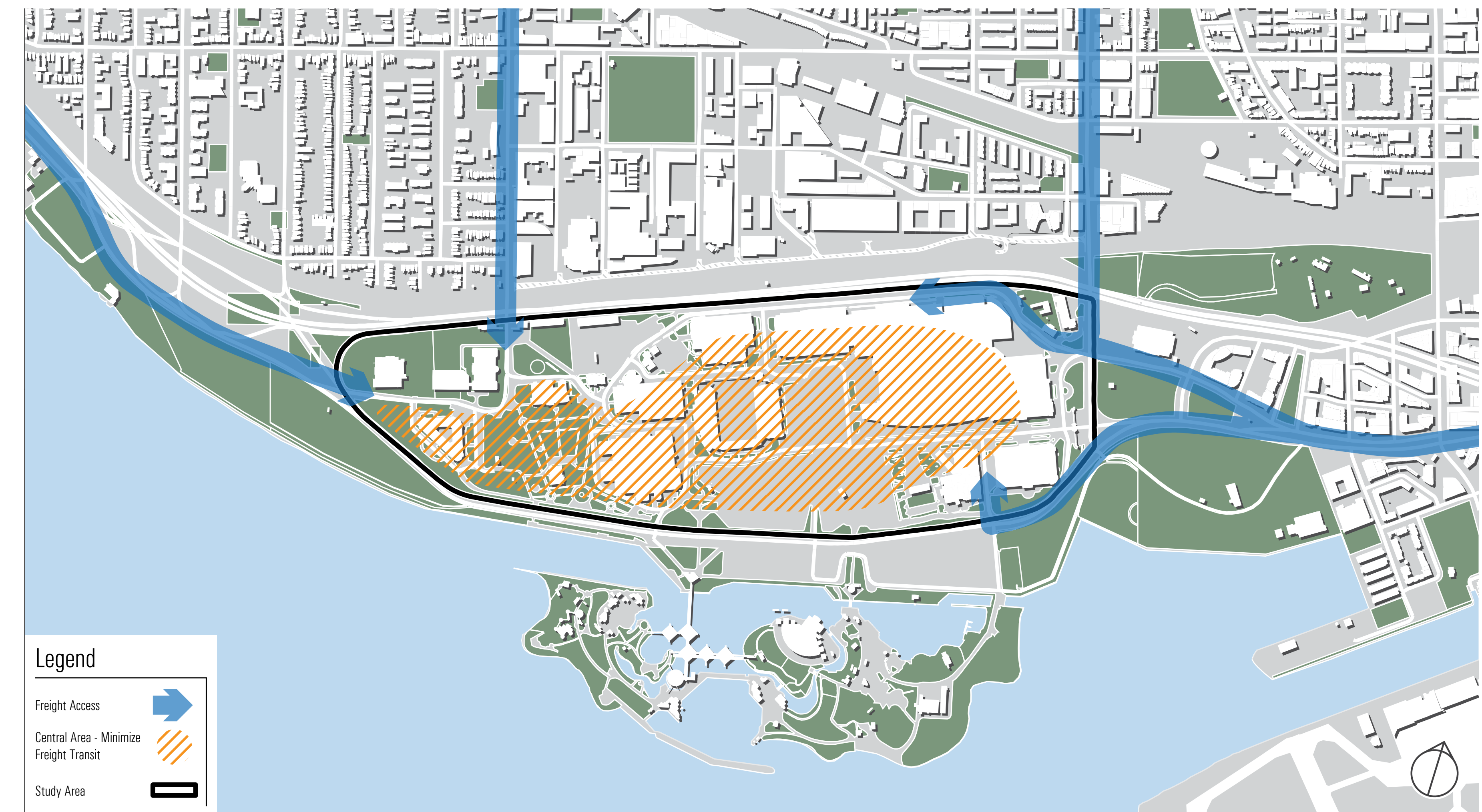
What do you think about this guiding principle? Please write your answers on sticky notes and place them here.

Guiding Principles and Analysis

Promoting a Clean & Green Environment

Maximize Efficiency of Site Operations

- Manage truck infiltration into core site areas through building and event servicing route and access consolidation, including exploring emerging alternative freight distribution models;
- Ensure open spaces on site can be flexible to accommodate a variety of functions



Green Paving
Source: www.grasscrete.com



Semi-trailer delivering carnival ride
Credit: www.technicalpark.com



Set-up for carnival, Baltimore
Credit: Jen Rynda, www.darkroom.baltimoresun.com



Delivery robot, Washington DC
Credit: Starship Technologies, www.govtech.com



Delivery drone
Credit: Claud Paris, www.smithsonianmag.com

What do you think about this guiding principle? Please write your answers on sticky notes and place them here.

Guiding Principles and Analysis

NEXT PLACE

Exhibition Place Master Plan

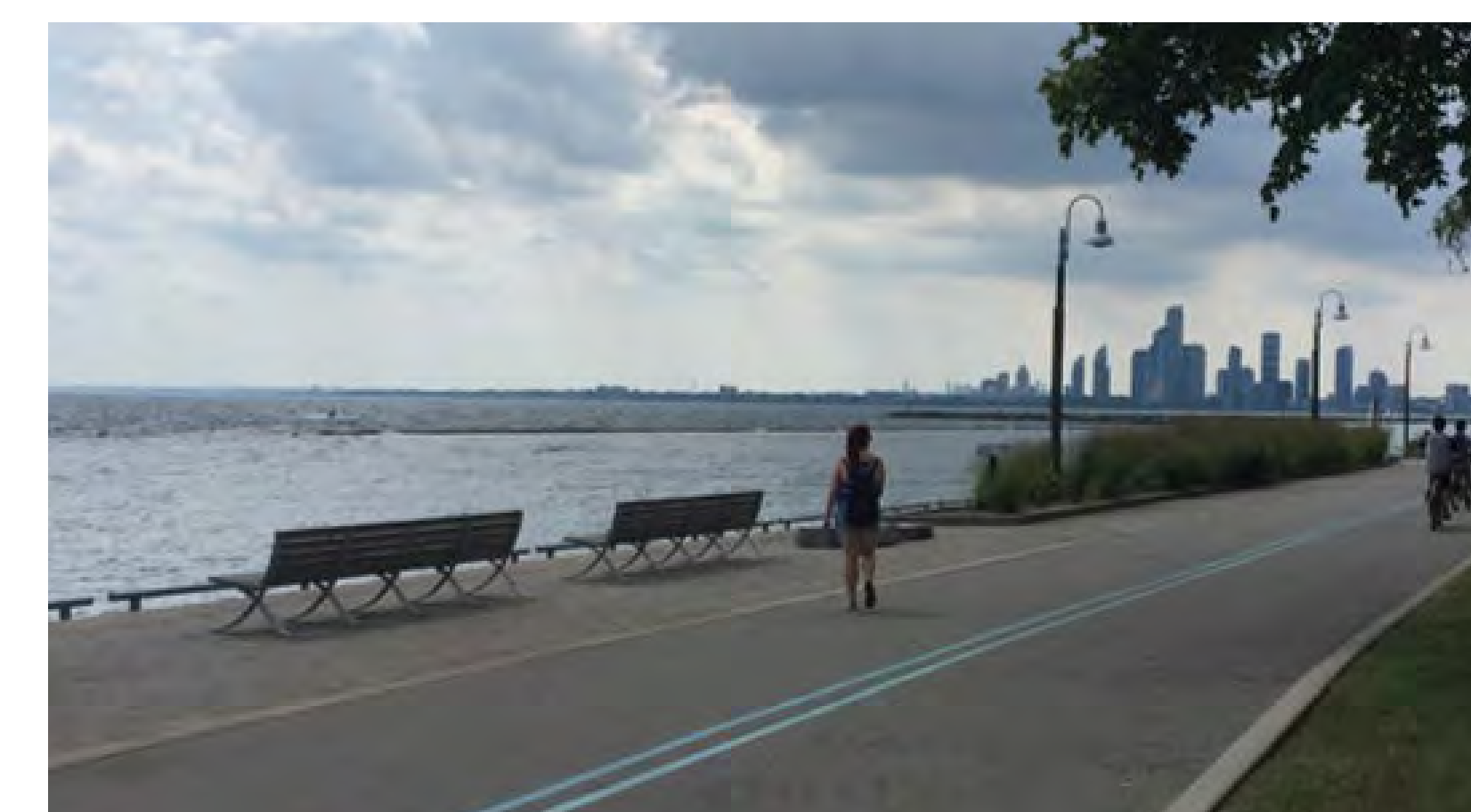
Creating Dynamic & Diverse New Place

Celebrate and conserve the cultural heritage of Exhibition Place

- Conserve and rehabilitate Exhibition Place's monumental landscapes in a way that ensures they continue to function as significant settings that reinforce the site's boundaries and sense of place, enhance the exceptionally designed, large-scale agricultural and industrial exhibition architecture, and interpret the integral role of the military;
- Support the use, maintenance and sustainability of Exhibition Place as an accessible and multi-functional historic public asset through a culture of stewardship that prioritizes the rehabilitation of its buildings and landscapes;
- Enhance designed cultural heritage landscapes as recognizable, defined places and restore transitions between them. Enhance physical and visual connections to surrounding areas that contribute to the historical and contextual value of the site.
- Opportunity to enshrine a requirement to consider Indigenous Placemaking opportunities given the prominence of this waterfront site, and the traditional relationship with the waterfront.



Panoramic View towards Heritage Buildings (Exhibition Place)
Source: City of Toronto



View towards the Lake from Martin Goodman Trail
Source: City of Toronto

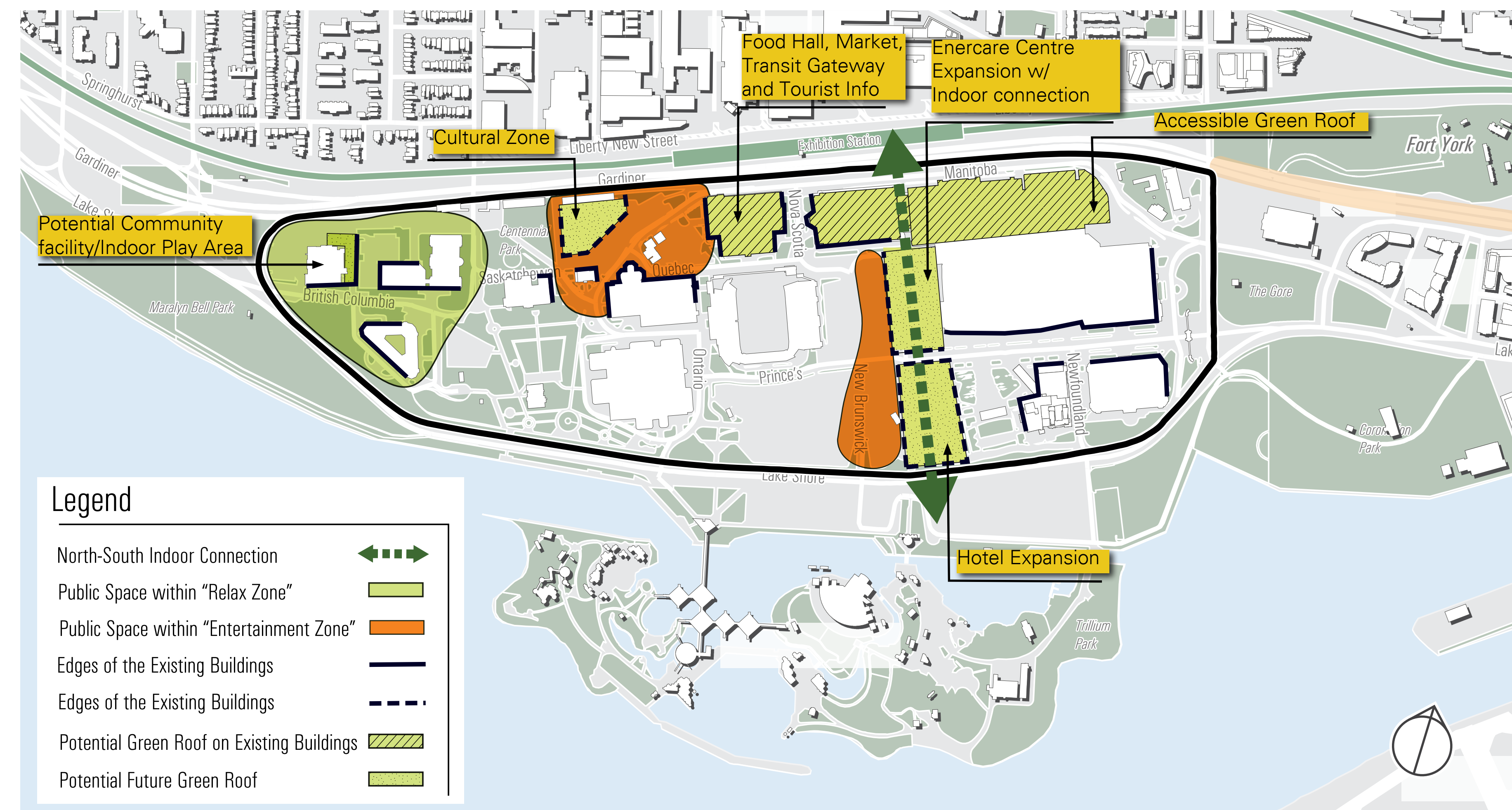
What do you think about this guiding principle? Please write your answers on sticky notes and place them here.

Guiding Principles and Analysis

Creating Dynamic & Diverse New Place

Complement Built Form with Programming and Open Space, reinstating the historical, balanced relationship between building and landscape

- Ensure that proposed new buildings and structures will be compatible in scale with the monumental buildings and landscapes of the site. New architectural additions and landscape architectural interventions will continue to promote design excellence and complement existing and proposed programming;
- Encourage new additions and structures to include weather protection; be fully integrated into the public realm and parkland network; and allow for a variety of events and programs;
- Protect and enhance Exhibition interior requirements to ensure the continuity of these uses at Exhibition Place;
- Promote flexible and adaptable interior spaces within new buildings to accommodate a wide range of events and users.



Exhibition Road, Kensington, London
Source: <http://news.lvyou168.cn>



Sesc Pompeia, Brazil
Source: <http://www.iea.usp.br>

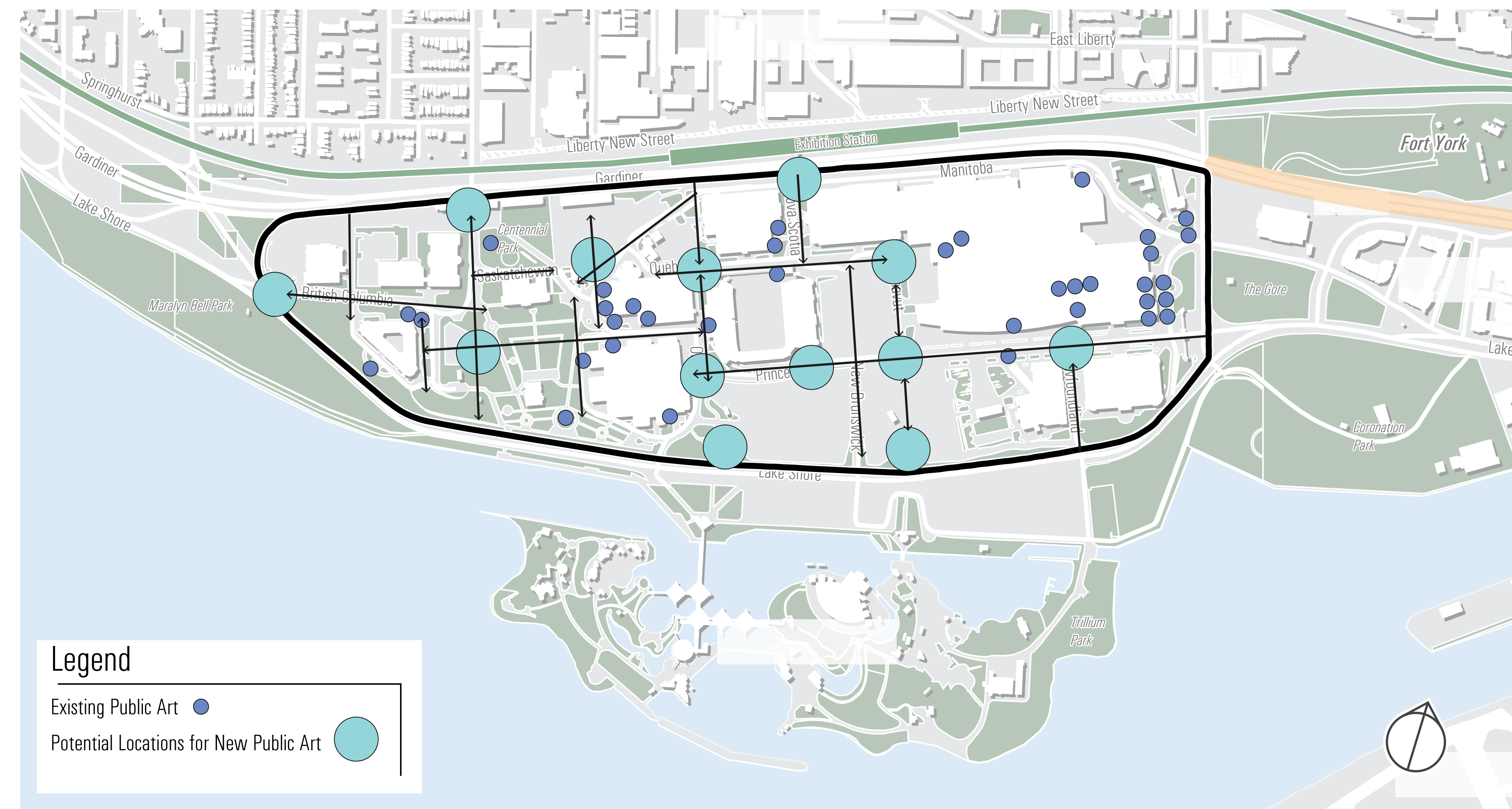
What do you think about this guiding principle? Please write your answers on sticky notes and place them here.

Guiding Principles and Analysis

Creating Dynamic & Diverse New Place

Continue to develop an Extensive Public Art Collection

- New public art will be placed with intention and consideration of the surrounding context and will compliment cultural landscape heritage of the site. All new and existing public art will be visible and accessible by the general public. New public art locations will create meeting places and moments of pause, enhance vistas and view corridors and contribute for the overall pedestrian exploratory experience.



Pan Am Art (Exhibition Place)
Source: City of Toronto



Greek Gods at Exhibition Place
Source: City of Toronto



Shrine Peace Memorial
Source: City of Toronto



The Indigenous mural at McKenzie-Smith Bennett School
Source: <https://www.theifp.ca> - Veronica Appia/Metroland



Whirlpool Field Manoeuvres public art
Source: Urban Toronto, photo by Craig White

What do you think about this guiding principle? Please write your answers on sticky notes and place them here.

Guiding Principles and Analysis

Openness and Transparency/Responsiveness to the Broader Community and Stakeholders

Engage with the Community and Stakeholders Throughout Master Plan Process and Implementation

- Make planning and implementation decisions through fully transparent and consultative public processes.



What do you think about this guiding principle? Please write your answers on sticky notes and place them here.

Public Space for All

NEXT PLACE

Exhibition Place Master Plan



Darling Harbour, Sydney
Source: <http://landezine.com> by Simon Wood



Dilworth Park, Philadelphia
Source: Twitter @UrHomeinPhily



Vancouver Land Bridge
Source: <https://www.columbian.com>



Public Square in Cleveland
Source: <https://www.planning.org>



Philadelphia Rail Park
Source: <https://www.centercityphila.org>



Humber Bay Bridge, Toronto
Source: City of Toronto



Sherbourne Common, Toronto
Source: <https://www.archdaily.com>



Exhibition Road, Kensington, London
Source: Twitter @STEFANOSUTTER

As a City-wide Gathering Place, Exhibition Place must support large events and festivals, and provide year-round spaces for everyday activities, while also celebrating its cultural heritage to truly become a Place for All.