

# City Wide Study of Existing City of Toronto Dogs Off-Leash Areas (OLA)

## L'AMOREAUX PARK

### Inventory and Analysis

Topography	-2% slope
Small Dog Area	no
Access Area	paved pathway entry from walking path and from parking lot
Surfacing	grass/natural; compaction
Fencing style	post and paddle fencing with wire mesh
Fencing height	1 m
Fence condition	good condition
Gates	2 double gates from outside OLA
Exits/Entrances	2- one to parking, one to pathway
Trees	3 mature coniferous trees within OLA; urine ring and basal damage; in poor health; 3 trees outside OLA providing shade are healthy
Other vegetation	none



### What We've Heard

The L'Amoreaux Park Dog Owner's Association has shared these issues

#### Fencing and Gates

Holes within the fencing, dogs are able to escape. Latches stick, making access difficult.

#### Code of Conduct and By-Laws

Unlicensed dogs using the off leash area. Users unaware of OLA rules and regulations.

#### Access to Water

Users get water from nearby washrooms, however washrooms not always open.

#### Drainage

Entrance to the OLA is very wet and water pools in the rain.

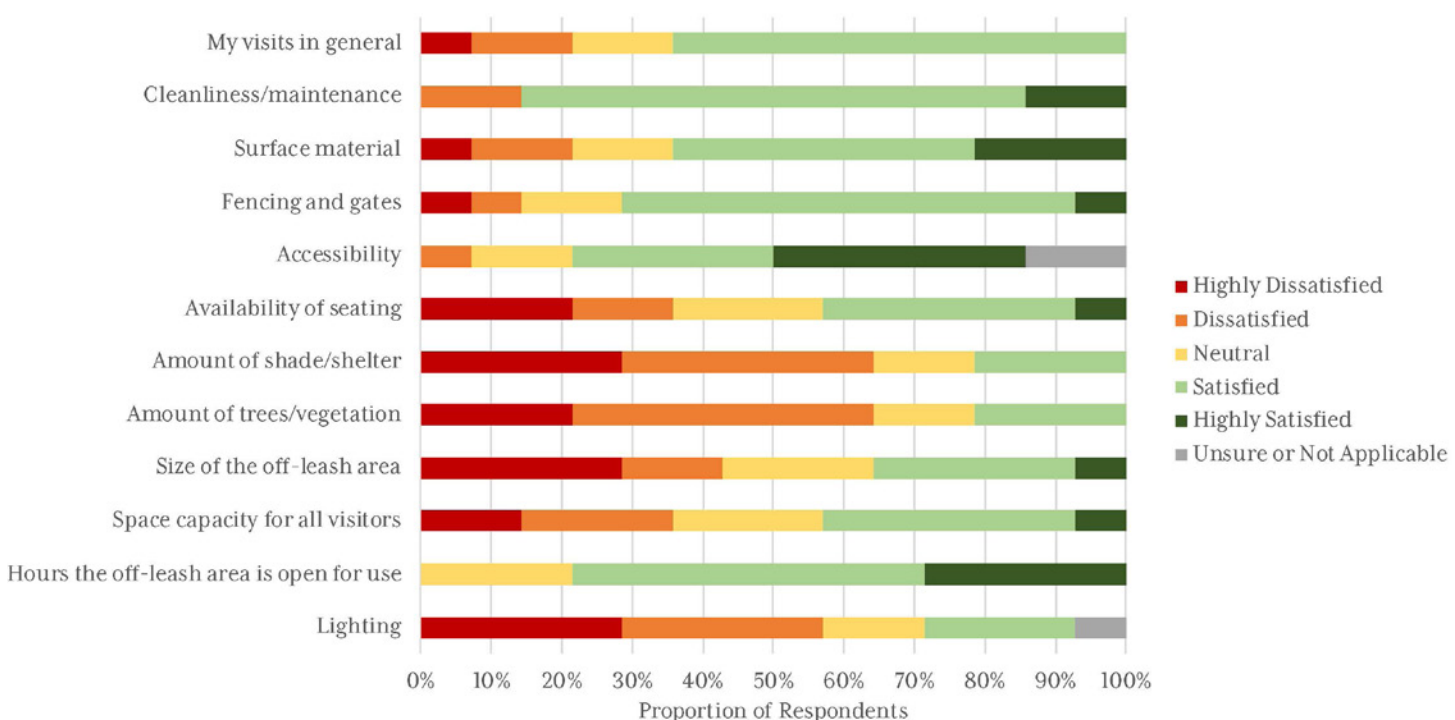
#### Small Dog Area

Desire to have a separate area designated for small dogs.

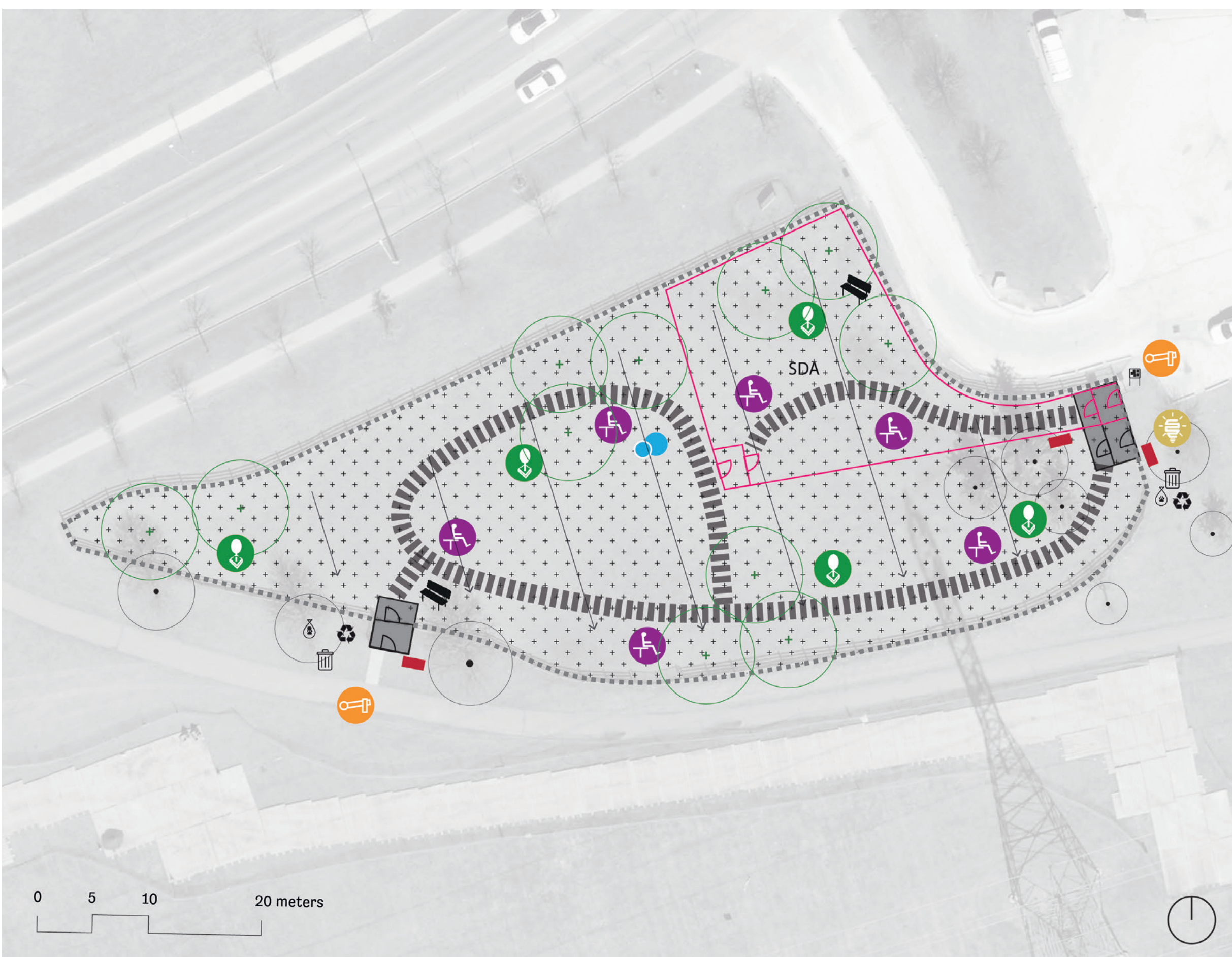
#### Shade and Trees

Little to no shade within the OLA, however it is believed that the OLA is located within a hydro corridor.

A public survey on all City of Toronto Off-Leash Areas (OLA) has been completed, and individual case study site data for L'Amoreaux Park satisfaction rating is included in the chart below.



### Preliminary Recommendations



#### Legend

##### Existing Features

- Double-gated Entry/Exit
- Recycling bin
- Garbage bin
- Green bin
- Bench
- Existing Community Board
- Existing Tree

##### Recommended Features

- Proposed SDA
- Grass Seed Mix (fescue mix)
- Accessible Seating
- Accessible Pathway
- City Signage
- Accessible Drinking Fountain
- Vegetation Protection
- Proposed Tree
- New Latch
- Steel Fencing
- Concrete Pad
- LED Lighting

#### D1.3

Plant protected trees within OLA

This OLA has a very limited amount of shade, and does not meet a minimum of 20%. Additional deciduous trees are recommended to increase shade and canopy cover. Vegetation at the base of the tree will protect it from urine rings/basal damage.

#### D2.8

Install grass seed mix (fescue mix)/t

Grass surfacing is favoured within this OLA. Recommendation is to retain the current surface material, but install a more durable seed mix with native grasses.

#### D3.1

Replace existing latches with upgraded latch

Redesigned latches will make gates more accessible. New latches will be more resilient during winter use.

#### D3.4

Install steel fencing (min. 1.5m high)

L'Amoreaux is located within the suburbs and steel fencing is recommended to reduce holes and damage. The height of the fence should be a minimum of 1.5m (5ft) high, as taller fences will prevent large dogs from jumping out of the OLA.

#### D3.6

Install concrete pad at all access points

This OLA has existing concrete pad entries, however they are flush with the ground and have poor drainage that causes pooling. Concrete pad to be regraded to ensure positive drainage to eliminate pooling.

#### D4.2

Redefine existing OLA boundary to accommodate Small Dog Area

There is demand for a SDA within L'Amoreaux OLA, and the size of the park is sufficient that supplying a separate area for small dogs would not be an issue. Providing a SDA is a best practice in dog parks to allow for the comfort of both small and large dogs during play.

#### D4.3

Provide additional accessible pathway within OLA

Providing accessible, paved pathways (meeting AODA standards) encourages directive exercise within the OLA, and allows a larger proportion of dog owners to make use of the OLA. Recommendation for path that enters and goes through SDA.

#### D4.5

Install accessible seating

Providing accessible seating (meeting AODA standards) will allow for more comfort while spending time in the OLA. Those with mobility constraints will be able to make use of the OLA.

#### D4.6

Install City signage within OLA and prior to main access point

Signage prior to entry will allow non OLA users to determine whether they are eligible to use OLA. Signage within OLA allows current users to become familiar with any changes to by-laws or Codes of Conduct.

#### D5.1

Install lighting at main entry/exit\*

Based on feed back received, there is strong demand for lighting with the OLA. Recommendation is to provide lighting at main entry/exit (closest to the parking lot) to encourage multi-season use.

\*If existing electrical services exist

#### D6.1

Install multi-tier drinking fountain\*

There is no existing water fountain within Sandy Bruce. Installing a multi-tier drinking fountain for all OLA users. Surrounding surfacing would include gravel or concrete to ensure proper drainage and limit pooling and puddles.

\*If existing waterline exists

#### OM

Update maintenance procedures

Maintenance will perform weekly inspections, install surface bins for users to repair holes created by digging, monitor and maintain surface bin contents, and protect and monitor vegetation health for all trees and grassed areas. Trees will be protected to limit urine ring and basal damage.

The L'Amoreaux Park OLA serves as an exemplar and contains attributes/criteria similar to the City's other existing OLAs. These recommendations are for demonstration purposes and are not intended to imply the OLA will be redesigned as illustrated in the immediate future.

#### D4.7

Install community boards at main access point

Community boards provide a place where OLA users are able to post notices about community events, lost and found, and local news.