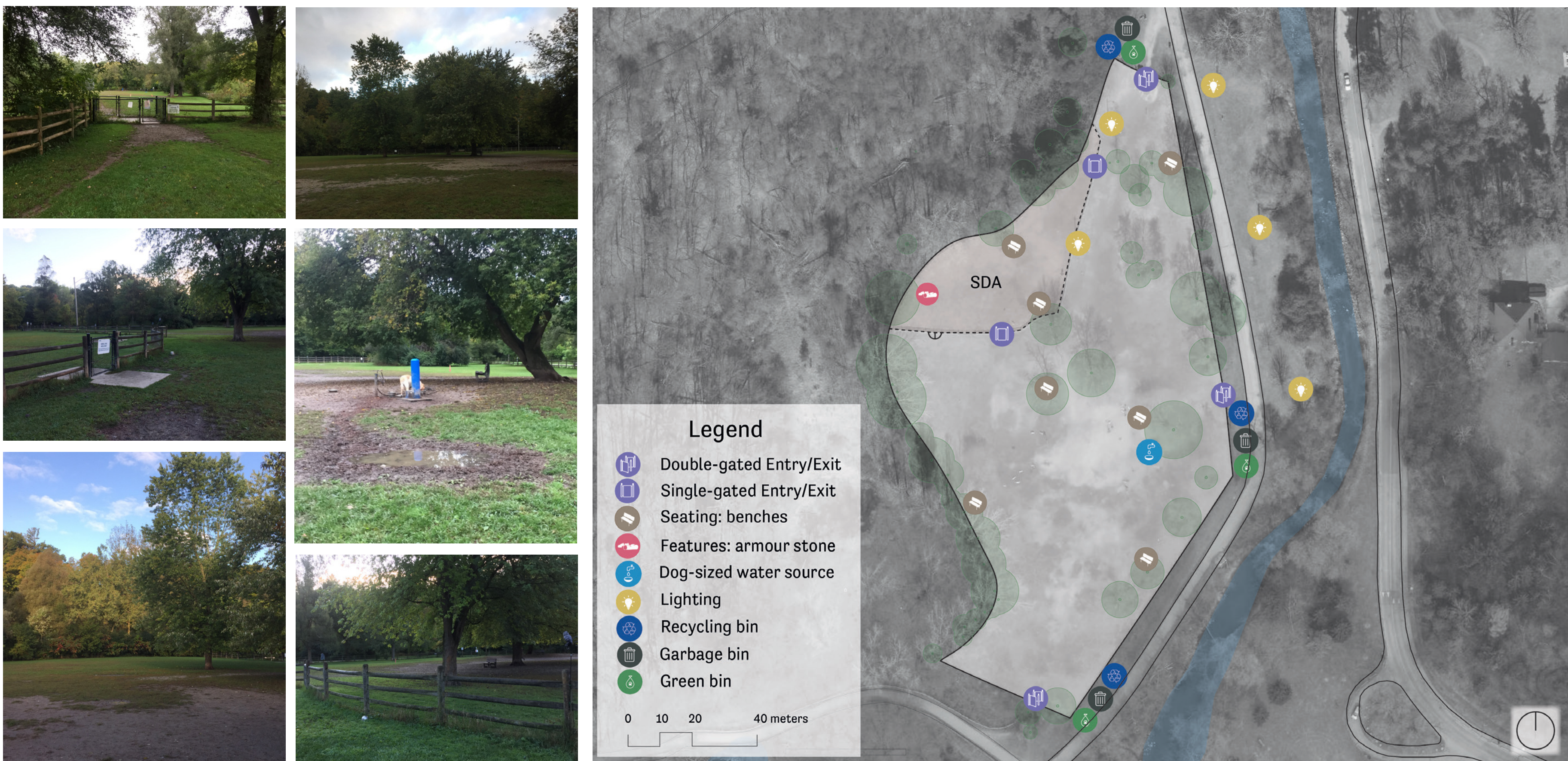


City Wide Study of Existing City of Toronto Dogs Off-Leash Areas (OLA)

SUNNYBROOK PARK

Inventory and Analysis

Topography	-2% slope
Small Dog Area	yes
Access Area	paved road entry but unpaved/natural path connection into OLA
Surfacing	grass/natural surface holes/digging damage evident areas of poor drainage
Fencing style	post and paddle with wire mesh chain-link entrances
Fencing height	1 m
Fence condition	poor condition- holes, rust, sagging
Gates	3 double gates from outside OLA; 2 single gates between general area and small dog area
Exits/Entrances	2
Trees	~20 trees; often with exposed roots with root damage; basal damage/urine rings; compaction around roots; perimeter trees outside of OLA are healthy
Other vegetation	shrubs and groundcover protecting some trees along perimeter

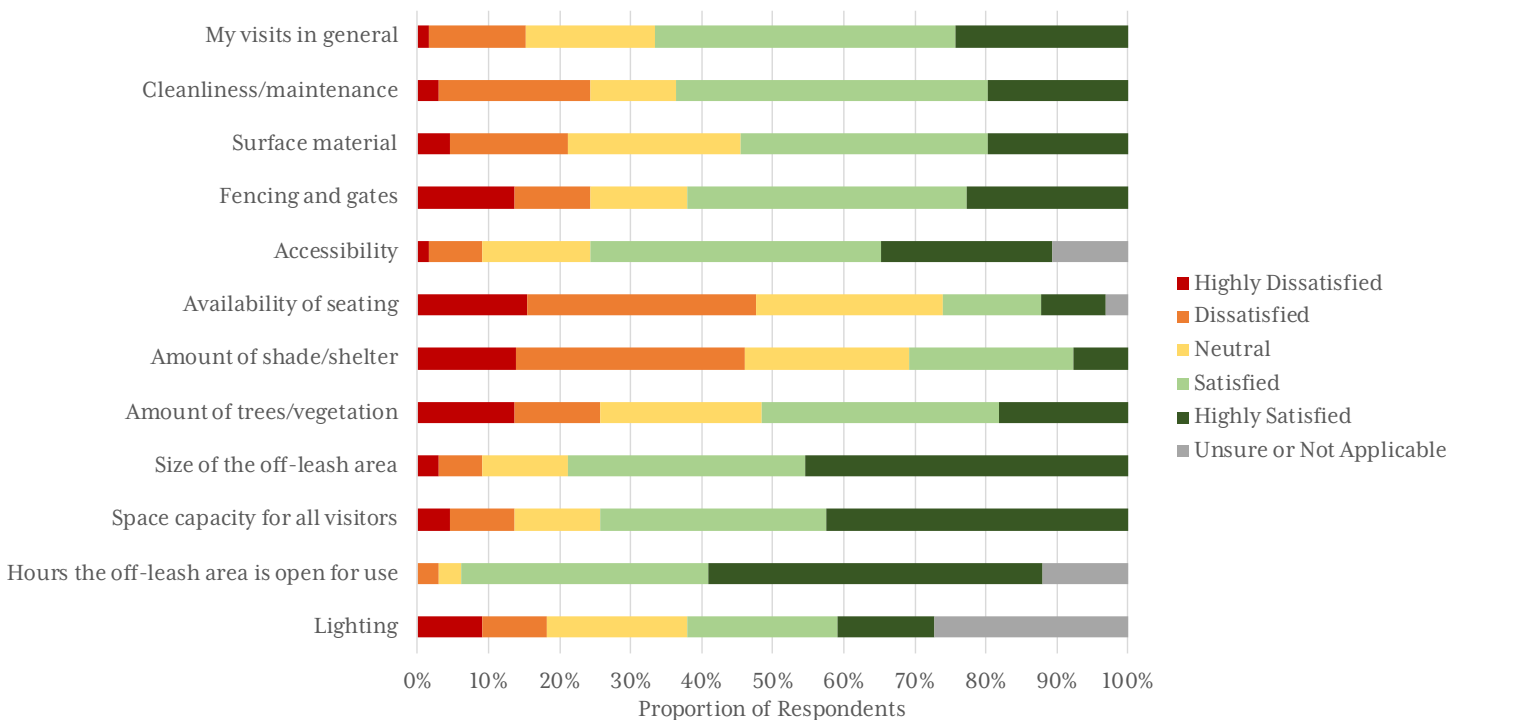


What We've Heard

The Sunnybrook Park Dog Owner's Association has shared these issues

Water Supply Base of water source drains poorly and puddle forms. Dogs are drinking from the puddles.	Maintenance and Winterization Issues with the latches and concrete pads due to snow and ice build up. Using salt is a concern.
Fencing Fencing near forested area is too low and of poor quality. Dogs are able to escape.	Communication Some park users unfamiliar that OLA is for dogs. Users are biking and picnicking which can be unsafe for all.
Small Dog Area Dogs must enter general area prior to the SDA. Need direct access to SDA from main entry/exit	Interactive Elements Lack of tactile amenities within OLA. Users would like to see elements for the dogs to play/exercise.

A public survey on all City of Toronto Off-Leash Areas (OLA) has been completed, and individual case study site data for Sunnybrook Park satisfaction rating is included in the chart below.



Preliminary Recommendations



The Sunnybrook Park OLA serves as an exemplar and contains attributes/criteria similar to the City's other existing OLAs. These recommendations are for demonstration purposes and are not intended to imply the OLA will be redesigned as illustrated in the immediate future.

Legend

- Existing Features**
- Double-gated Entry/Exit
 - Recycling bin
 - Garbage bin
 - Green bin
 - Bench
 - Existing Tree
 - Water
 - Features: Agility Features

Recommended Features

- Grass Seed Mix (fescue mix)
- LED Lighting
- New Latch
- Accessible Seating
- Accessible Drinking Fountain
- Community Board
- City Signage
- Interpretive Signage
- New Agility Equipment

D4.8 Install educational/interpretive panels at main entry/exit

Sunnybrook Park is located within an ESA and certain measures and precautions need to take place within these areas. Signage will assist in supporting the messaging and awareness of ESA sites.

D2.8 Install grass seed mid (fescue mix)

Grass surfacing is favoured within this OLA. Recommendation is to retain the current surface material, but install a more durable seed mix with native grasses.

D4.1 Install Agility Equipment*

This OLA is high use and there is demand for interactive elements. Agility equipment could provide more opportunity for rigorous play within the OLA and promote exercise. *Please note that any and all agility equipment will need to go through a professional inspection process prior to installation and yearly during use.

D4.5 Install accessible seating

Providing accessible seating (meeting AODA standards) will allow for more comfort while spending time in the OLA.

D5.1 Install lighting at main entrance and along paved pathway

D5.4 Sunnybrook is a large OLA, and numerous users travel through the park. Existing lighting within OLA to be upgraded to LEDs, and additional lighting should be installed along looping pathway and main entry/exit.

D3.1 Replace existing latches with upgraded latch

Redesigned latches will make gates more accessible. New latches will be more resilient during winter use.

D4.2 Redefine existing OLA boundary to accommodate SDA

There is an existing SDA within the OLA, however users have to walk through the general area to access it. Boundary to be extended to the north to allow users direct access to the SDA.

D4.6 Install City signage within OLA and prior to main access point

Signage prior to entry will allow non OLA users to determine whether they are eligible to use OLA. Signage within OLA allows current users to become familiar with any changes to by-laws or Codes of Conduct.

D6.1 Install multi-tier drinking fountain

There is an existing multi-tier drinking fountain within the OLA, however the surrounding surfacing does not drain properly. Installing appropriate surfacing at the base of the drinking fountain will ensure proper drainage and reduce pooling and puddles

D3.4 Install ESA compatible fencing

There is already fencing around this OLA, however there are holes that have required temporary repairs. The recommendations to increase the height of the fence to 1.5m in order to adhere to best practices in dog park design. Work needs to be further investigated as it relates to the ESA.

D4.3 Provide additional accessible pathway within OLA

Providing accessible, paved pathways (meeting AODA standards) encourages directive exercise within the OLA, and allows a larger proportion of dog owners to make use of the OLA. Recommendation is to also include a path that goes through SDA.

D4.7 Install community boards at main entry/exit

Community boards provide a place where OLA users are able to post notices about community events, lost and found, and local news.

OM Update maintenance procedures

Maintenance will perform weekly inspections, install surface bins for users to repair holes created by digging, monitor and maintain surface bin contents, and protect and monitor vegetation health for all trees and grassed areas. Temporary closed portions may result to encourage regrowth. Tree fencing to be installed with proper root and base protection.