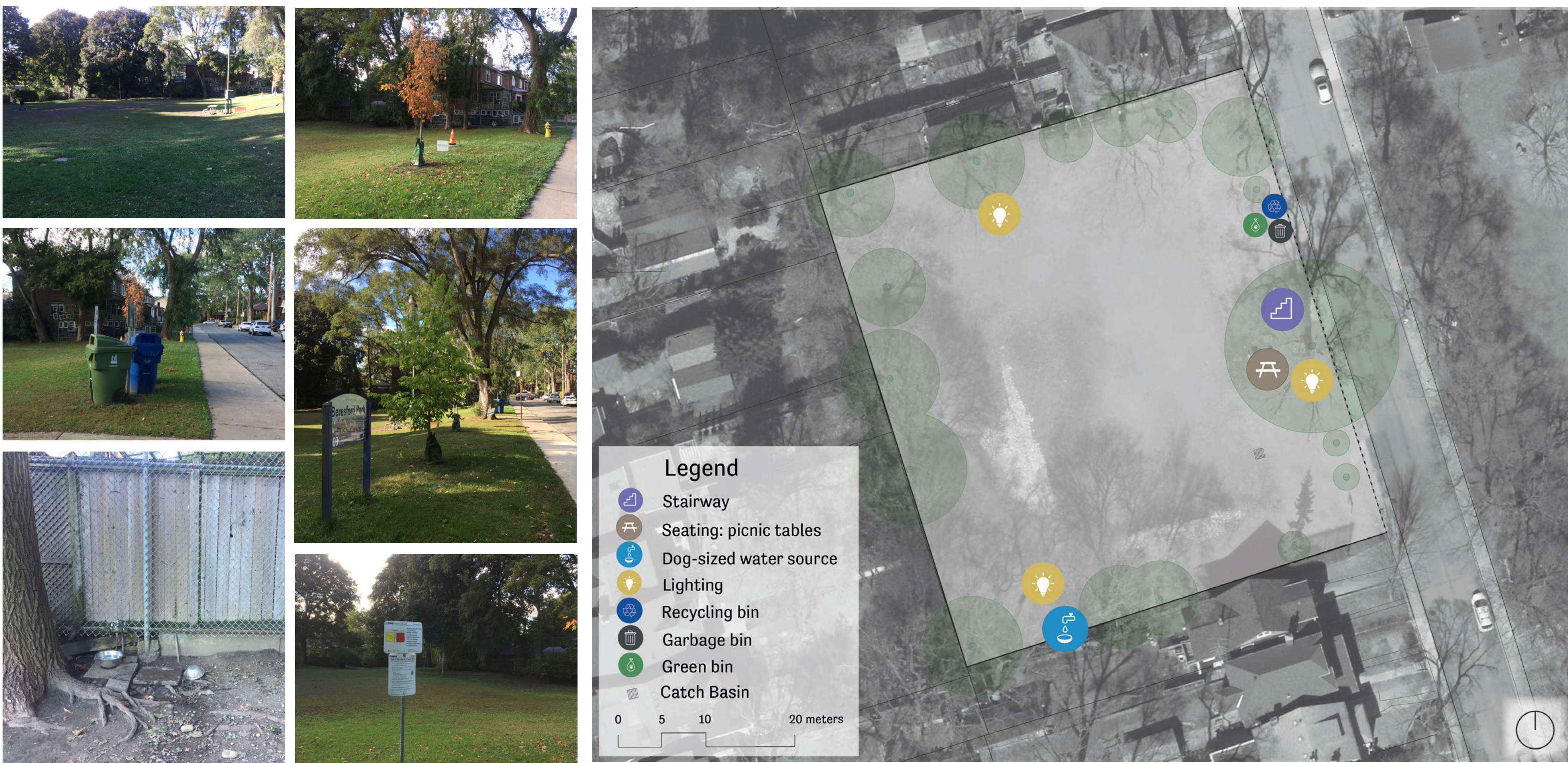


City Wide Study of Existing City of Toronto Dogs Off-Leash Areas (OLA)

BERESFORD PARK

Inventory and Analysis

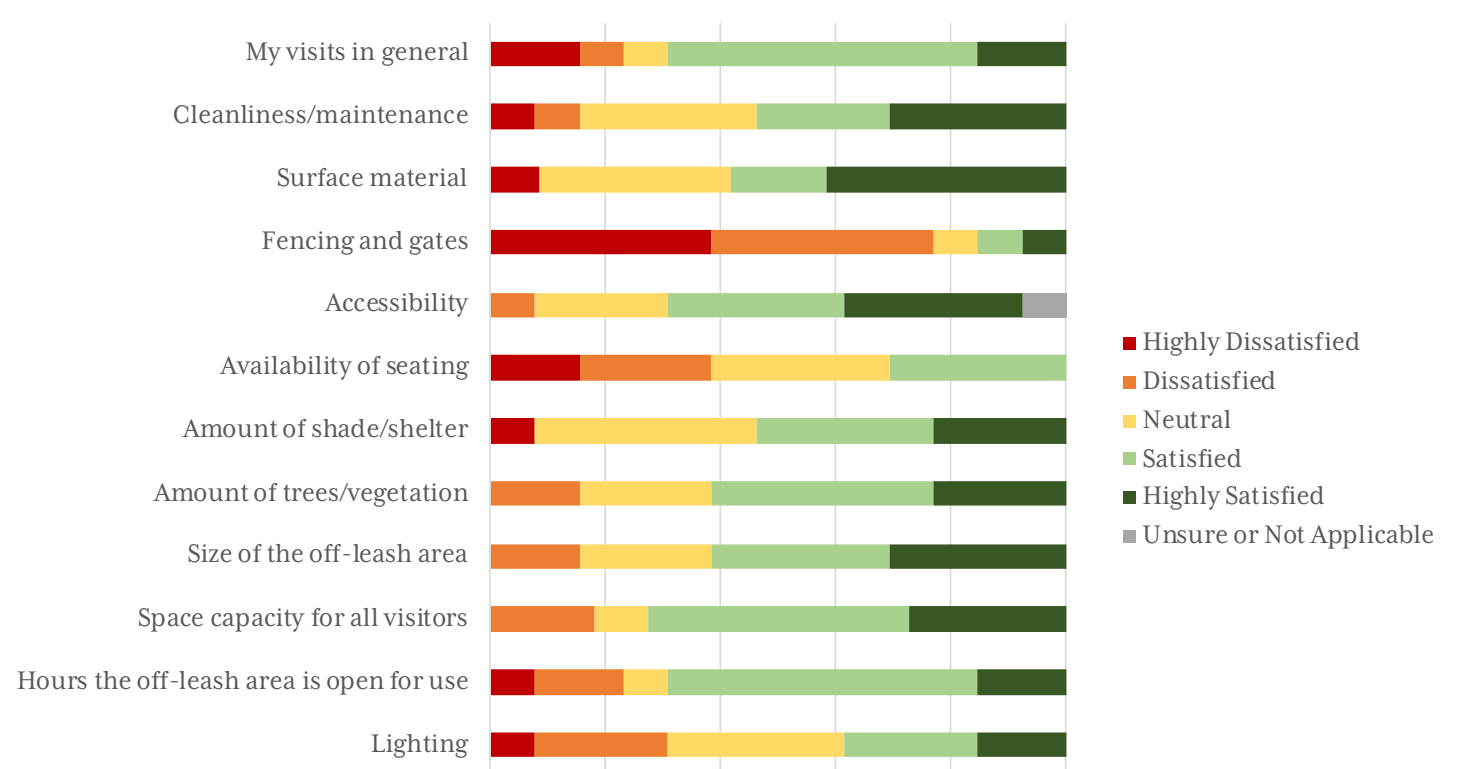
Topography	2-8% slope
Small Dog Area	no
Access Area	paved sidewalk adjacent to road
Surfacing	Grass/Natural Some holes and digging damage;
Fencing style	chainlink; unfenced on street edge
Fencing height	2-3m chainlink
Fence condition	vegetation taking over and some rust
Gates	1 single gate from private yard
Exits/Entrances	N/A
Trees	1 dead young tree in gator bag; 2 newly planted trees in gator bags; mature trees with urine ring damage, root exposure and root wounding; some healthy trees along perimeter
Other vegetation	some shrubbery on perimeter



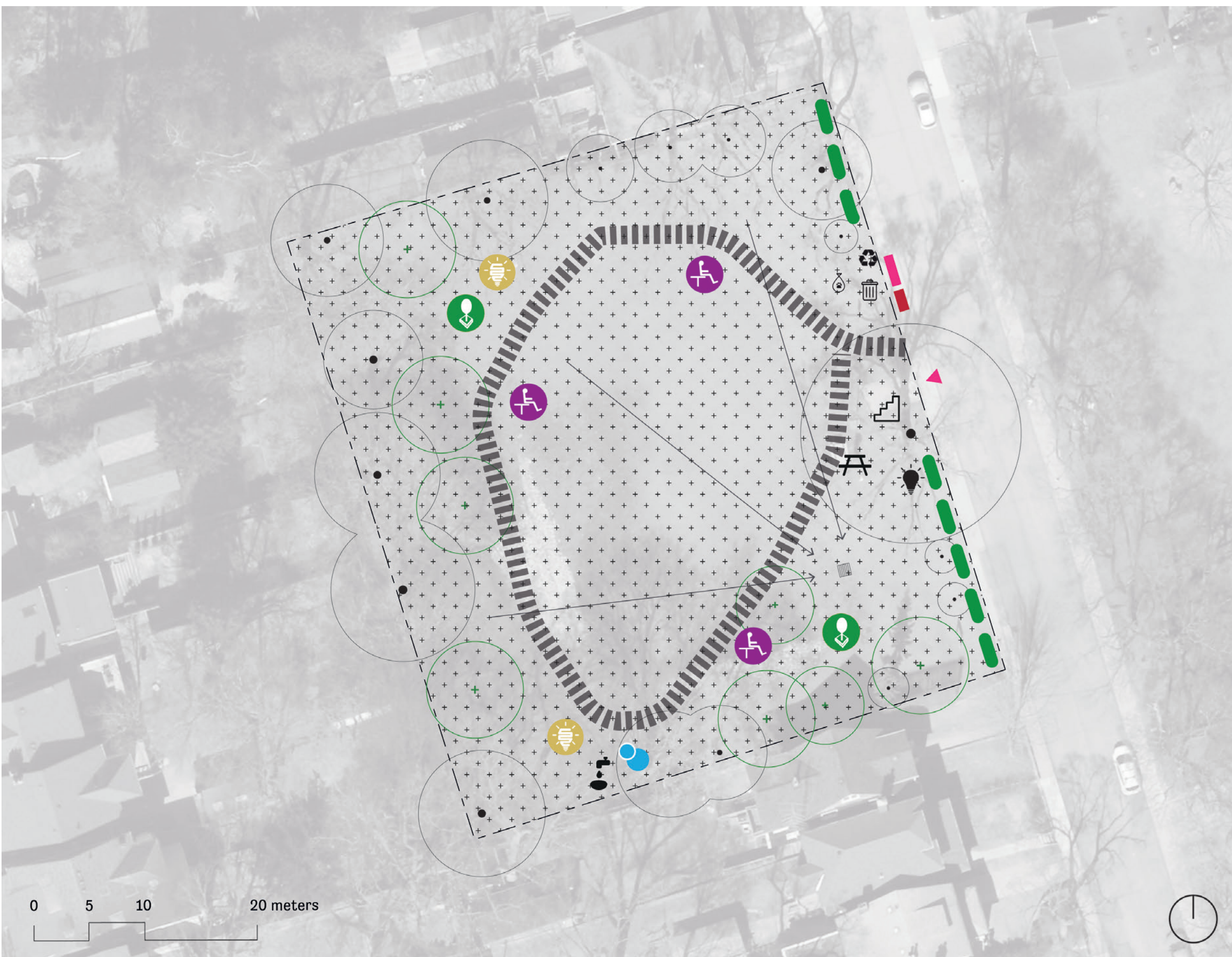
What We've Heard

The Beresford Park Dog Owner's Association has shared these issues	
Fencing Lack of barrier between road and OLA can be dangerous for dogs if they run out onto the street	Enforcement and Reporting Lack of information and education about dogs conflicts. Unsure on actions resulting from 311 calls.
Human Litter Incidents of meat scraps being found within the OLA have caused problems for dogs and users.	Roles and Responsibilities of OLA Unclear role and responsibility of DOA Rep and therefore are unable to effectively communicate resources and information to the community.

A public survey on all City of Toronto Off-Leash Areas (OLA) has been completed, and individual case study site data for Beresford Park satisfaction rating is included in the chart below.



Preliminary Recommendations



D1.3

Plant protected trees within OLA

Beresford OLA contains young deciduous trees with gator bags along the perimeter of the area. Recommendation to plant additional protected trees, while ensuring the centre area remains clear to allow for the winter skating rink.

D2.1

Surfacing to be regraded to encourage positive drainage (min 2%)

This OLA is bowl shaped with a catch basin in the south east corner. Positive drainage to this catch basin will reduce pooling and puddling and ensure that the winter skating rink drains properly.

D2.8

Install grass seed mix (fescue mix)

Grass surfacing is favoured within this OLA. Recommendation is to retain the current surface material, but install a more durable seed mix with native grasses.

D3.5

Install vegetative boundary

There is a secure boundary along 3 sides to the OLA, however there are concerns with dogs running out into the road or adjacent playground. Installing a vegetative boarder will help to reduce dogs escaping the OLA, while keeping it free of gates and fencing.

D4.3

Provide accessible pathway within OLA

Providing accessible, paved pathways (meeting AODA standards) encourages directive exercise within the OLA, and allows a larger proportion of dog owners to make use of the OLA. Recommendation for a looping path.

D4.5

Install accessible seating

Providing accessible seating (meeting AODA standards) will allow for more comfort while spending time in the OLA. Those with mobility constraints will be able to make use of the OLA.

D4.6

Install City signage within OLA and prior to main access point

Signage prior to entry will allow non OLA users to determine whether they are eligible to use OLA. Signage within OLA allows current users to become familiar with any changes to by-laws or Codes of Conduct.

D4.7

Install community boards at main access point

Community boards provide a place where OLA users are able to post notices about community events, lost and found, and local news.

D5.5

Replace lighting with LED

Where lighting currently exists, replace lights with LEDs. LEDs provide brighter lights and better durability while providing a reduced impact on the environment.

D6.1

Install multi-tier drinking fountain

There is an existing informal drinking tap within the OLA, however a multi-tier drinking fountain would provide drinking water for all users and would eliminate the need to bring water bowls.

OM

Update maintenance procedures

Maintenance will perform weekly inspections, install surface bins for users to repair holes created by digging, monitor and maintain surface bin contents, and protect and monitor vegetation health for all trees and grassed areas. Temporary closed portions may result to encourage regrowth.

The Beresford Park OLA serves as an exemplar and contains attributes/criteria similar to the City's other existing OLAs. These recommendations are for demonstration purposes and are not intended to imply the OLA will be redesigned as illustrated in the immediate future.