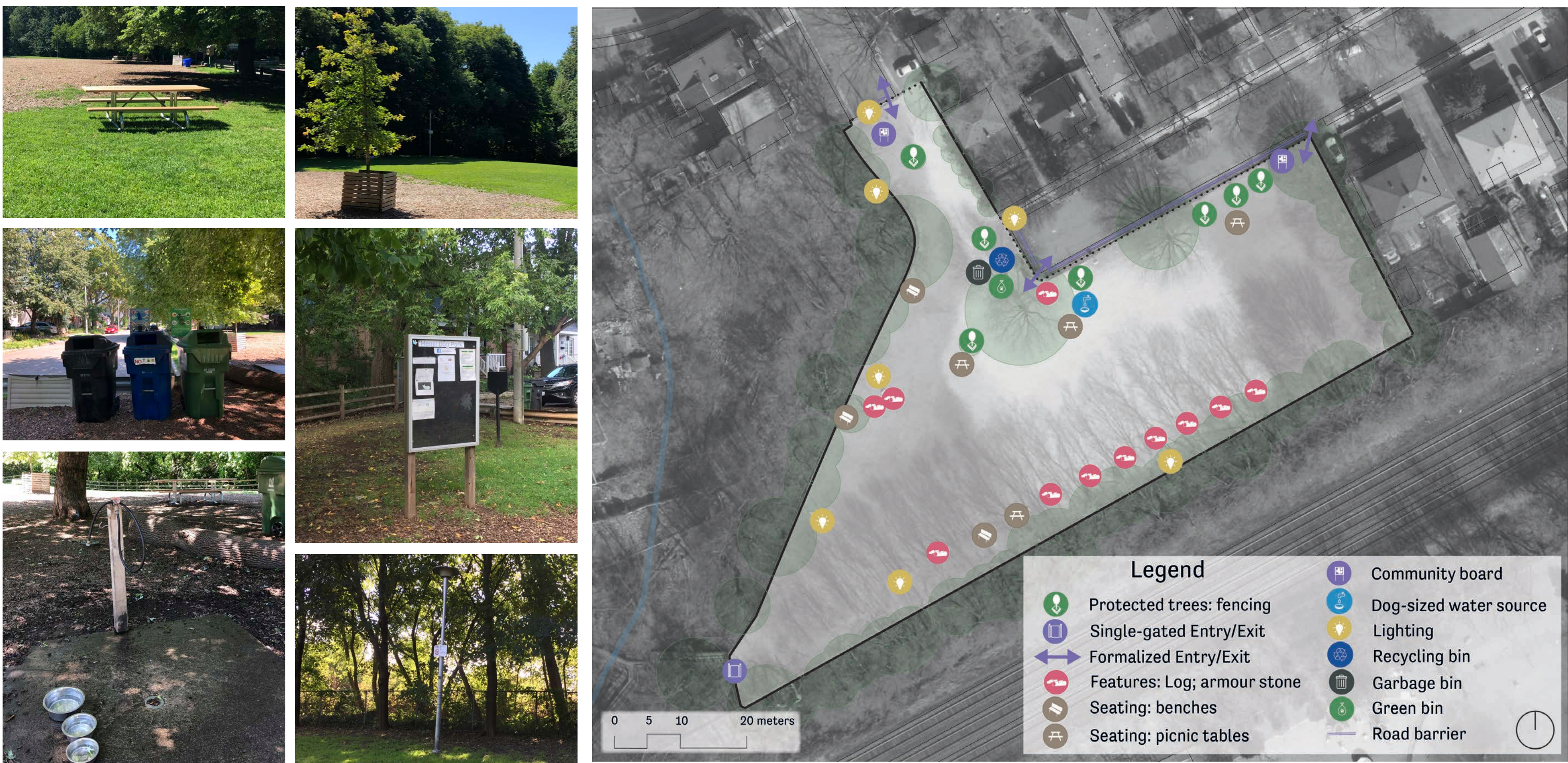


City Wide Study of Existing City of Toronto Dogs Off-Leash Areas (OLA)

MERRILL BRIDGE ROAD PARK

Inventory and Analysis

Topography	2-11% slope
Small Dog Area	no
Access Area	paved sidewalks for main entry; wooden boardwalk steps for back entry
Surfacing	grass/natural surface & wood chips/ EWF; some holes and digging damage; some erosion and compaction; material migration.
Fencing style	wire mesh and post and paddle; chainlink; unfenced on several sides
Fencing height	1.2m post and paddle; 1.8m chainlink
Fence condition	good condition
Gates	1 single gate at ravine entrance
Exits/Entrances	5: 1 gated; 3 semi-formal; 1 informal
Trees	7 young trees fenced/protected; 1-2 mature trees with urine ring damage, some root exposure; perimeter has healthy trees
Other vegetation	none beyond groundcover

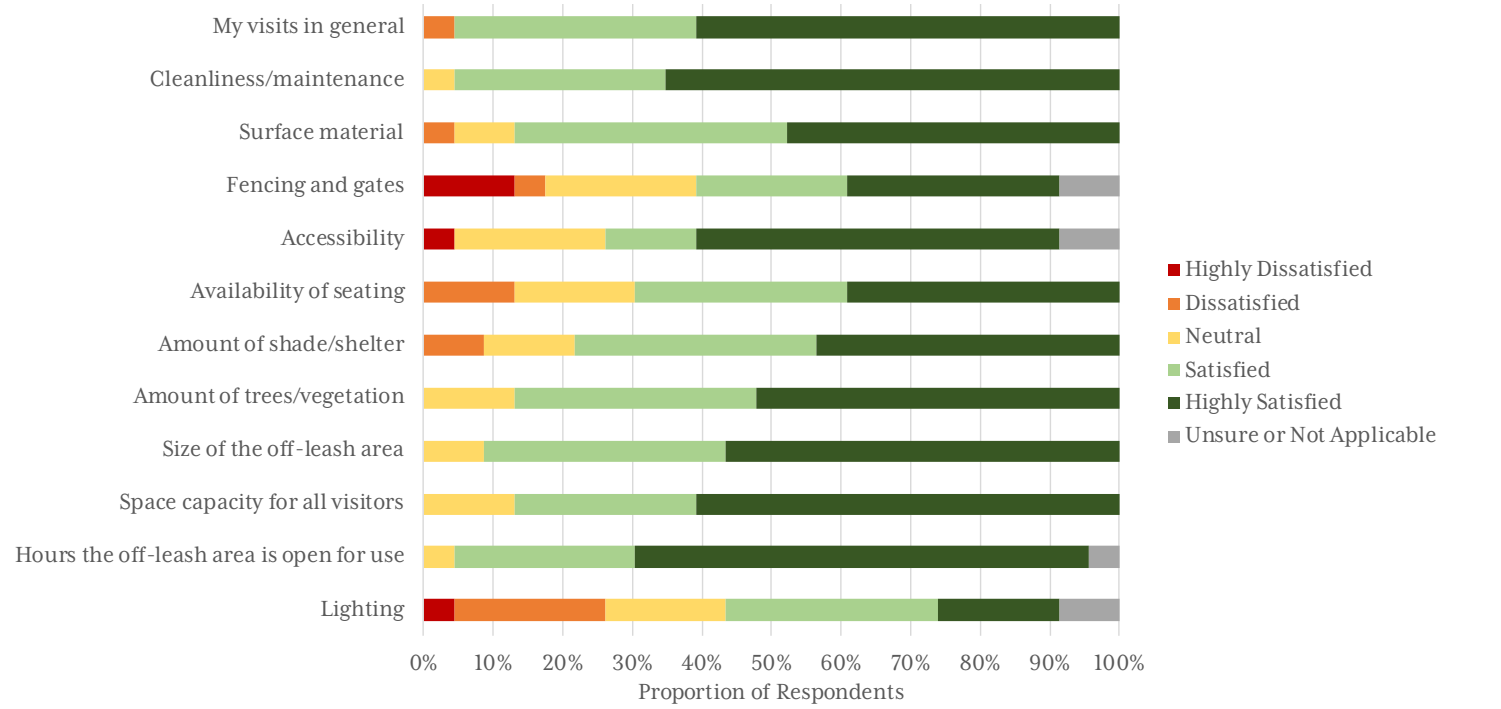


What We've Heard

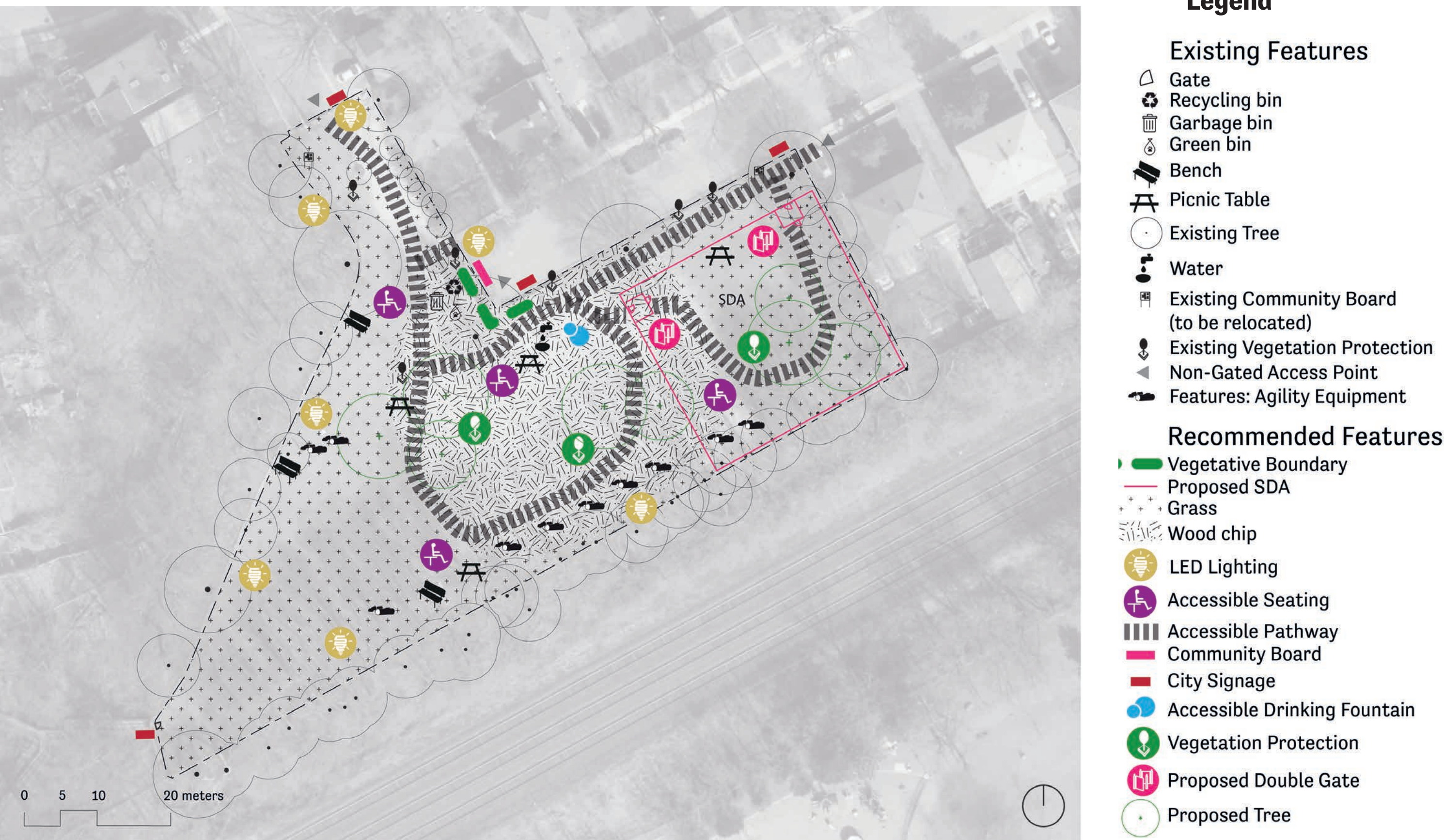
The Merrill Bridge Road Park Dog Owner's Association has shared these issues

Small Dog Area No SDA within Merrill Bridge contributes to an unsafe/uncomfortable environment. Desire for separate area for small dogs .	Communication Difficulty getting response to requests from City and from Metrolinx regarding issues with rail corridor.
Waste Disposal OLA users often discarding dog waste in recycling bin.	Bylaw Enforcement Some commercial dog walkers are using the park despite the park's designation as non-CDW. Enforcement of by-laws and better signage of the code of conduct is required.
Operations and Maintenance Existing surface bin needs to be topped up more frequently to allow users to fill the holes their dogs have dug.	

A public survey on all City of Toronto Off-Leash Areas (OLA) has been completed, and individual case study site data for Merrill Bridge satisfaction rating is included in the chart below.



Preliminary Recommendations



- D1.3** Plant protected trees within OLA
Merrill Bridge contains several protected trees, however the fencing used for protection needs to be updated to a City standard to ensure proper protection and maintenance.
- D2.2** Install dual surfacing in general area
Retain the current grass areas of the OLA, but install to a more durable seed mix. Similarly, top up 200mm depth of wood chips within area that already contains them, but the path (D4.3) will allow for more containment and separation of the surfaces.
- D3.7** Formalize main access point
This OLA has several access points. The road barriers assist in designating areas to enter, however to ensure that all entries are supplied with appropriate signage and garbage bins, vegetation will be added to emphasize appropriate entries.
- D4.2** Redefine existing OLA boundary to accommodate SDA
There is demand for a SDA within Merrill Bridge, and the size of the park is sufficient that supplying a separate area for small dogs would not be an issue. Providing a SDA is a best practice in dog parks to allow for the comfort of both small and large dogs during play.
- D4.3** Provide accessible pathway within OLA
Providing accessible, paved pathways (meeting AODA standards) encourages directive exercise within the OLA, and allows a larger proportion of dog owners to make use of the OLA. We recommend a looping pathway as well as a linear pathway that connects the entrances and includes the SDA.
- D4.5** Install accessible seating
Providing accessible seating (meeting AODA standards) will allow for more comfort while spending time in the OLA. Those with mobility constraints will be able to make use of the OLA.
- D4.7** Relocate community boards at main access point
Community boards already exist at two of the access points, but this requires duplicate information to be posted on the boards. For consistency and ease of access, consolidation to a larger board placed at more central location is recommended.
- D5.5** Replace existing lights with LED
Where lighting currently exists, replace lights with LEDs. LEDs provide brighter lights and better durability while providing a reduced impact on the environment.
- D6.1** Install accessible multi-tier drinking fountain
There is an existing drinking tap and hose within the OLA, however a multi-tier drinking fountain would provide drinking water for all users and would eliminate the need to bring water bowls.

The Merrill Bridge Road OLA serves as an exemplar and contains attributes/criteria similar to the City's other existing OLAs. These recommendations are for demonstration purposes and are not intended to imply the OLA will be redesigned as illustrated in the immediate future.



- OM** Update maintenance procedures
Maintenance will perform weekly inspections, monitor and maintain surface bin contents so users of OLA can repair holes created by digging, and protect and monitor vegetation health for all trees. Additional fencing or other protection will be considered for mature trees as part of these duties.