

REUNION CROSSING

SADRA PARK EXTENSION

Public Information Meeting - September 24th 2019



DIAMOND KILMER
DEVELOPMENTS

Janet
Rosenberg
& Studio



STOCKYARDS · JUNCTION · CORSO ITALIA

REUNION

· CROSSING ·

CONDOS & URBAN TOWNS



DIAMOND KILMER
DEVELOPMENTS

Janet
Rosenberg
& Studio

AGENDA

NEIGHBORHOOD CONTEXT

EXISTING SADRA PARK CONDITION

DESIGN APPROACH & VISIONING

SPLASH PAD SCALE STUDIES

PRECEDENTS

PARK OPTIONS

DISCUSSION AND QUESTIONS

Parks and Open Spaces within 500 metres (5 minute walk)

SADRA Park – sports court, exercise equipment, playground, water fountain, benches, horticulture beds, picnic tables, Silverthorne Allotment Garden.

Wadsworth Park – playground, soccer field B, bocce, wading pool, fountain, basketball court, baseball diamond

Turnberry South Park – playground

Constable Percy Cummins Parkette – horticulture

General Mercer School Building Grounds – wading pool. TDSB owned.

Prescott Parkette – horticulture

Don Panos Parkette – horticulture

Parks and Open Spaces within 1 kilometre (10 minute walk)

Prospect Cemetery – passive, private open space. Not City owned.

Earlscourt Park – Community Centre, indoor and outdoor pools, Sr and Jr playground, splash pad, soccer, baseball, **Dog Off Leash Area**.

Toronto Hydro Green Space – Not City owned

Upper Junction Park – playground

Maple Claire Park – playground, splash pad, shade structure

Keele-Mulock Parkette – playground, basketball court

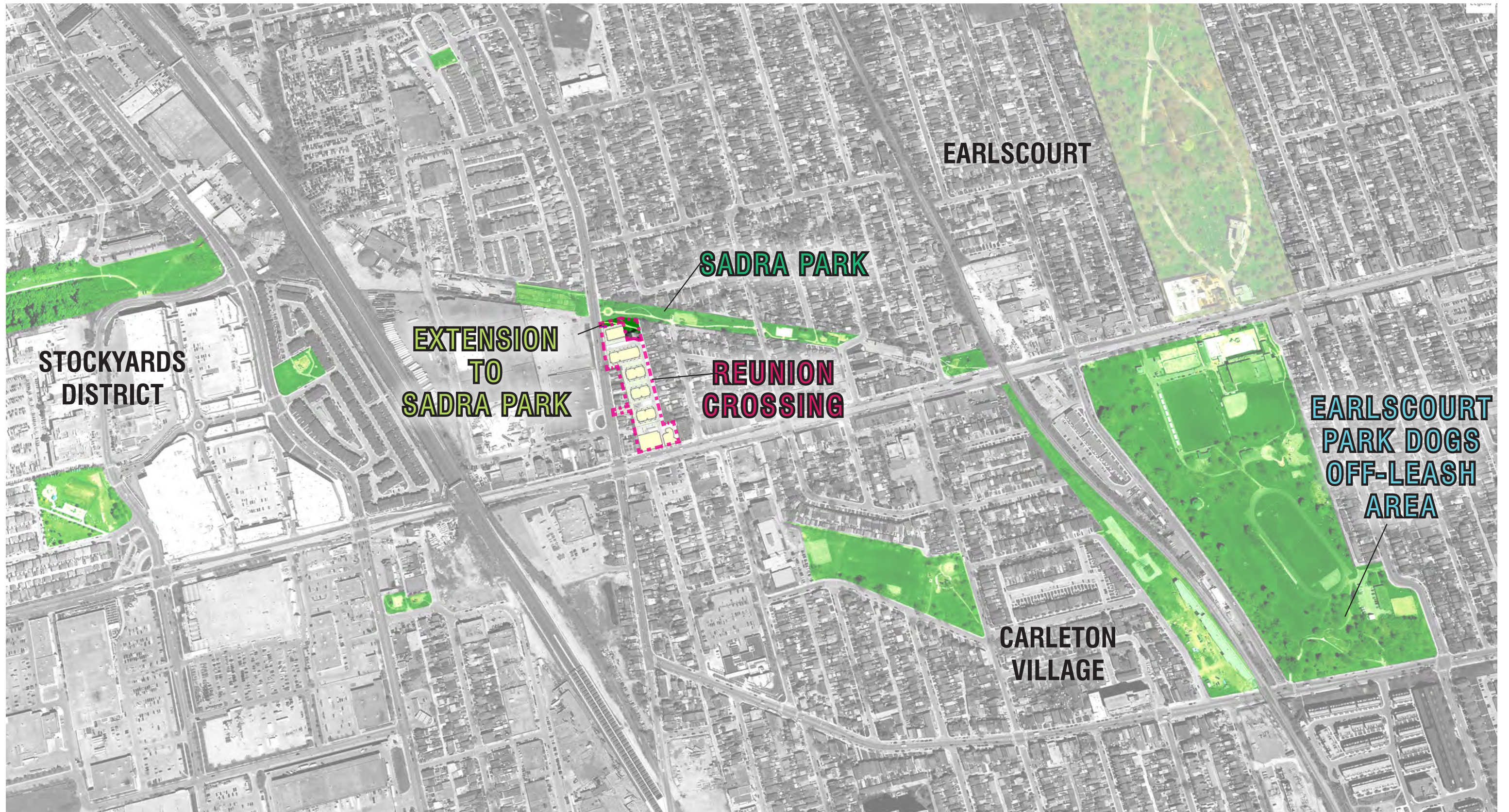
Pelham Avenue Playground – playground, wading pool

Turnberry North Park – Soccer Field B

Regent Park - Etobicoke – horticulture



Prepared by the City of Toronto





① CIRCLE PLANTER AT SADRA & OLD WESTON RD.



② PLAYGROUND AT SADRA & CLOVERDALE



③ BENCHES AT SADRA & SILVERTHORN AVE



④ FITNESS EQUIPMENT AT SADRA & CARRICK AVE



⑤ SADRA PARK MEANDERING PATH



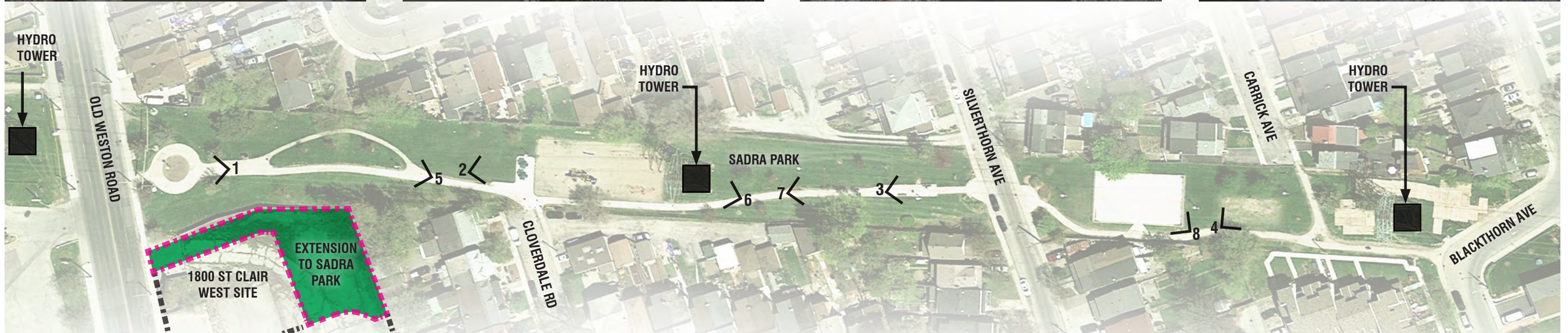
⑥ SADRA PARK HYDRO TOWER

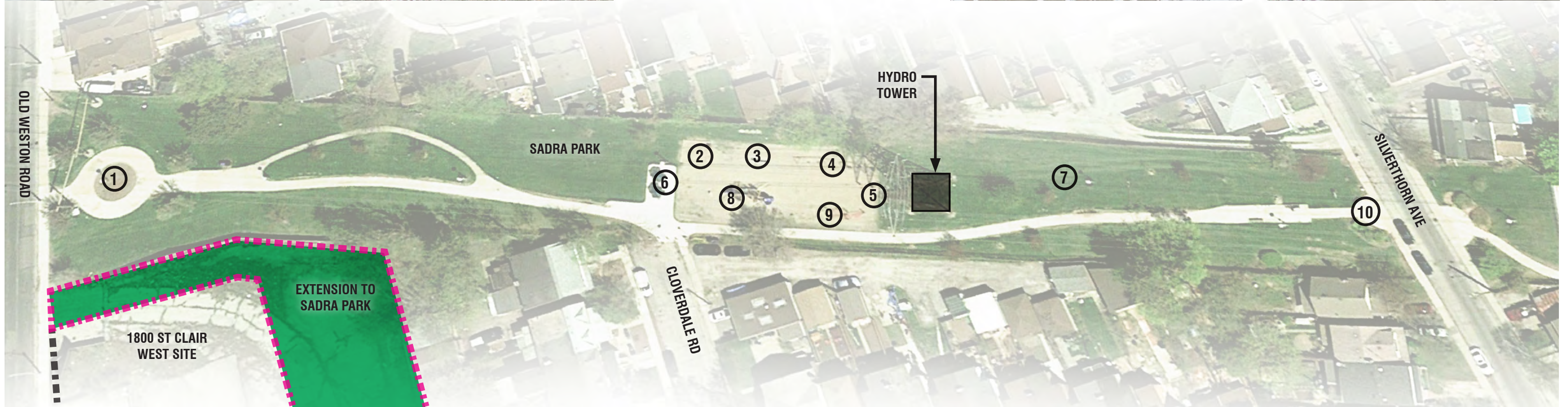


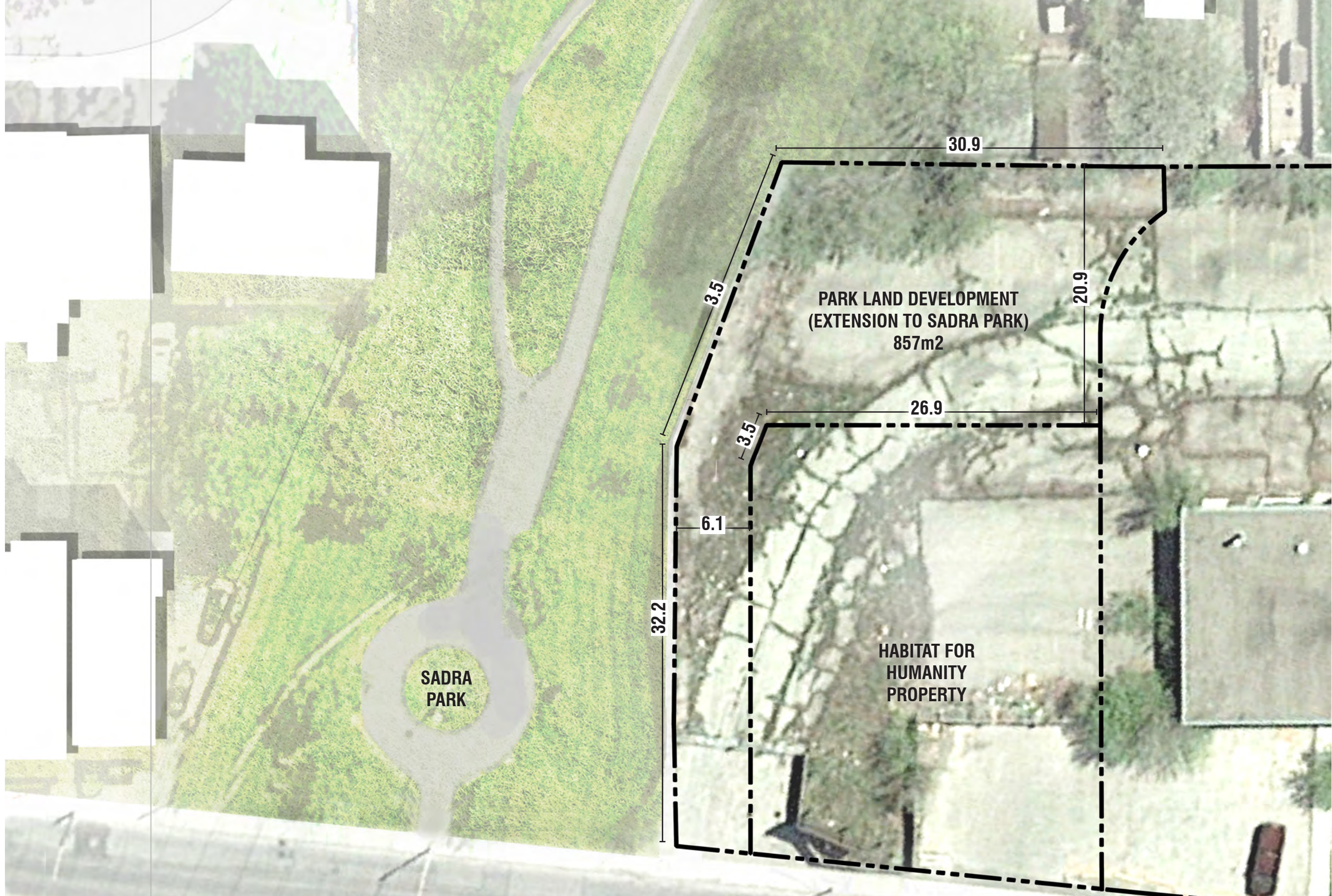
⑦ SADRA PARK TRAIL AND LAWN



⑧ SADRA PARK SPORTS COURT







Note: All dimensions in metres
EXISTING CONDITION

1:300



DIAMOND KILMER
DEVELOPMENTS

Janet
Rosenberg
& Studio

EXTENSION TO SADRA PARK

SIZE:

857m² (9,225 SQ. FOOT)

OPPORTUNITIES AND CHALLENGES:

-Ensure the new park is safe and lively, despite its location between private yards.

-Ensure the path system and design language are such that the new park feels like a part of SADRA.

-Provide a unique program to a park that already has many features.

-Provide a balance of passive and active uses in the park.



Prepared by the City of Toronto

EXTENSION TO SADRA PARK

- Concrete pathways will **connect** the existing and new portions of SADRA to create a **seamless park**.
- Because the existing SADRA Park is located entirely in a hydro corridor and has few trees, use the addition as an opportunity to create a **green oasis** with **large shade trees and horticulture beds**.
- Provide ample opportunity to **rest in comfort** on many **seating elements** and in the **shade**.
- **A large splash pad** will create a **lively** feature for the whole neighbourhood.
- Provide some seating away from the splash pad to allow for a **gathering area** that is not focussed on play.
- **Sightlines** from Old Weston Road into the new park area should be maintained.
- Provide a Water Bottle Filling station.

Prepared by the City of Toronto

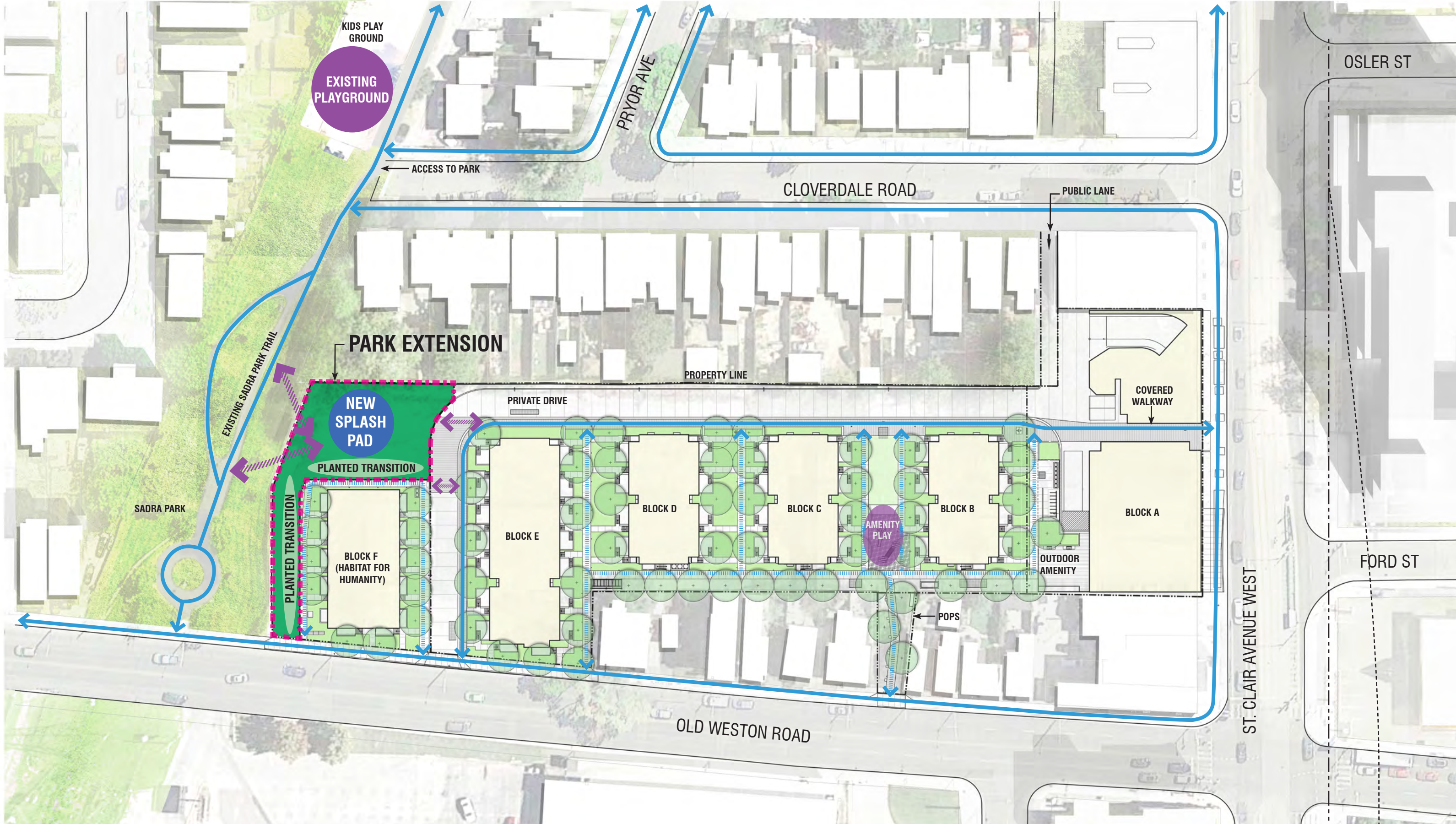


PROJECT TEAM - OUR PAST PROJECTS



DIAMOND KILMER
DEVELOPMENTS

Janet
Rosenberg
& Studio



——— PEDESTRIAN CIRCULATION
/////// NEW PEDESTRIAN CONNECTION NEEDED

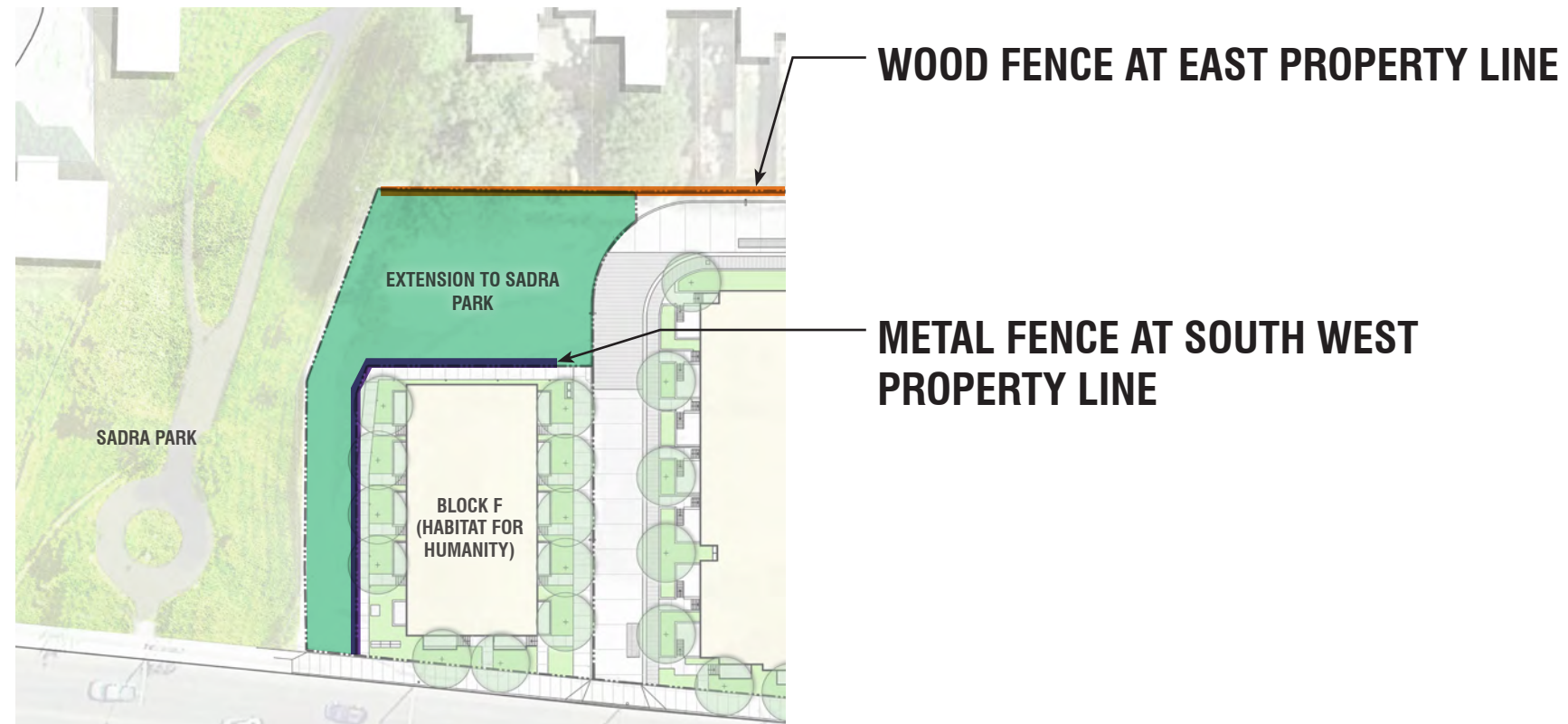
CONNECTION DIAGRAMS

1:500



DIAMOND KILMER
DEVELOPMENTS

Janet
Rosenberg
& Studio



WOOD FENCE

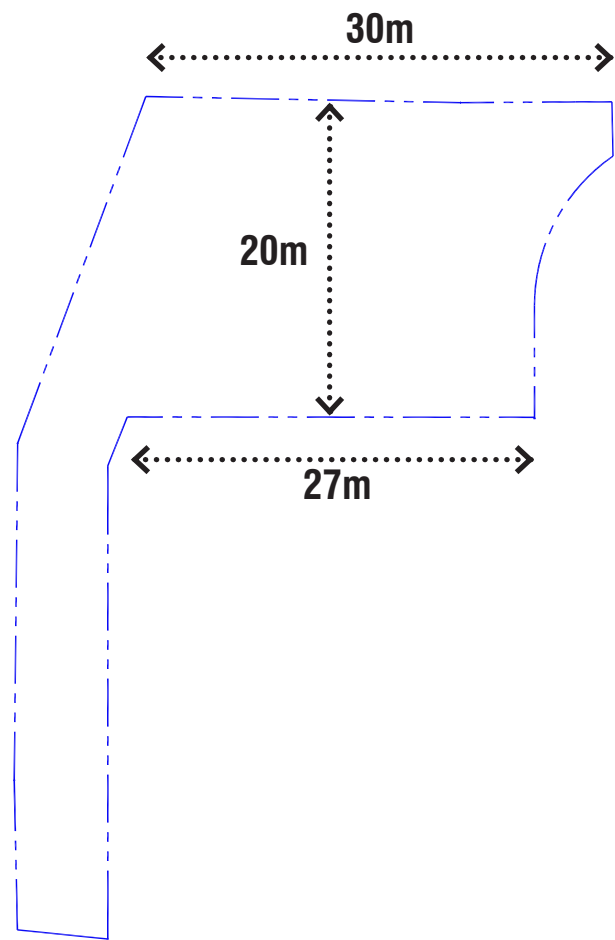


FENCE AT PROPERTY LINE

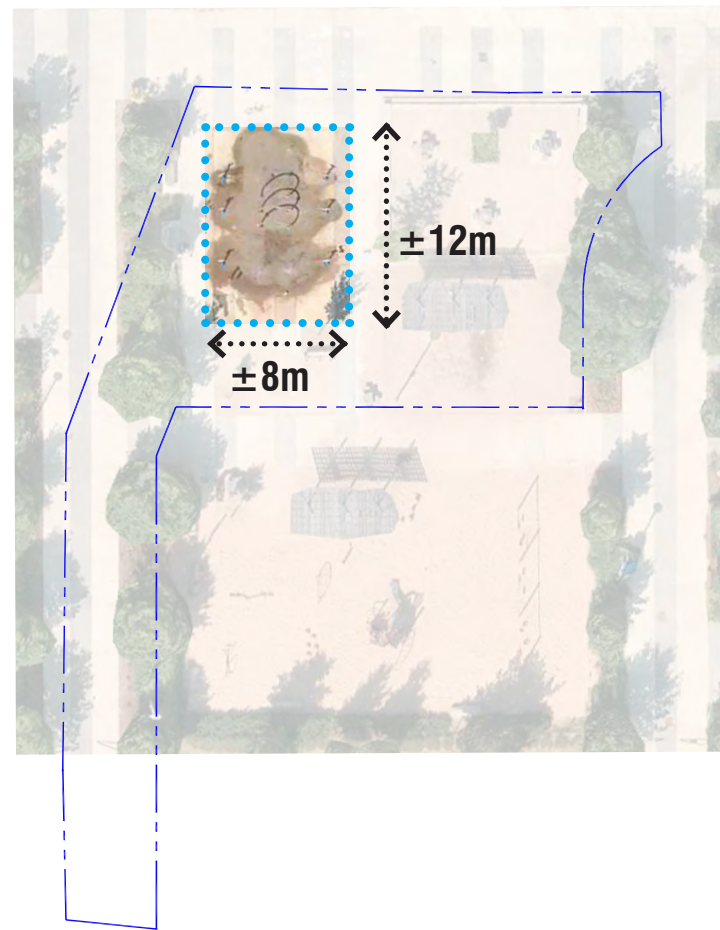


METAL FENCE

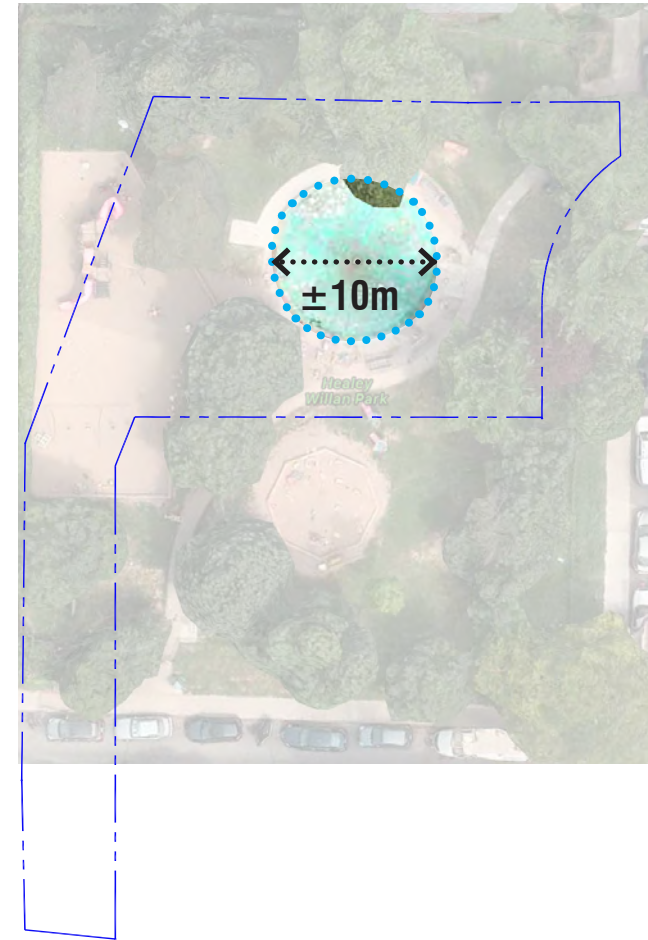




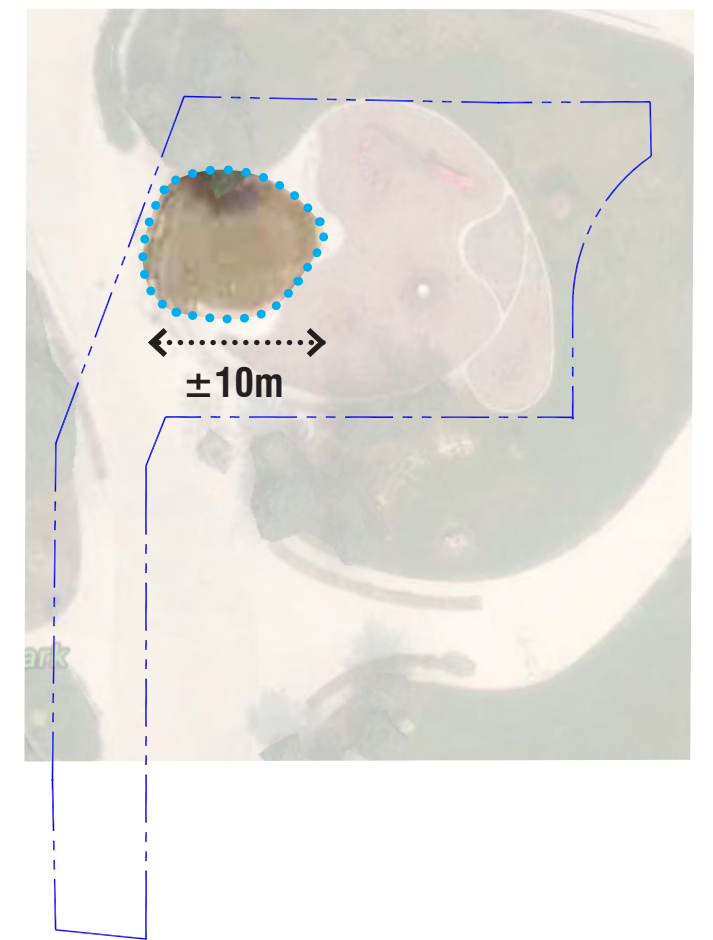
EXTENSION TO SADRA PARK



**WYCHWOOD BARNS PARK
INTERACTIVE WATER FEATURE**



**HEALEY WILLAN PARK
SPLASH PAD/WADING POOL**



**JOEL WEEKS PARK
SPLASH PAD**

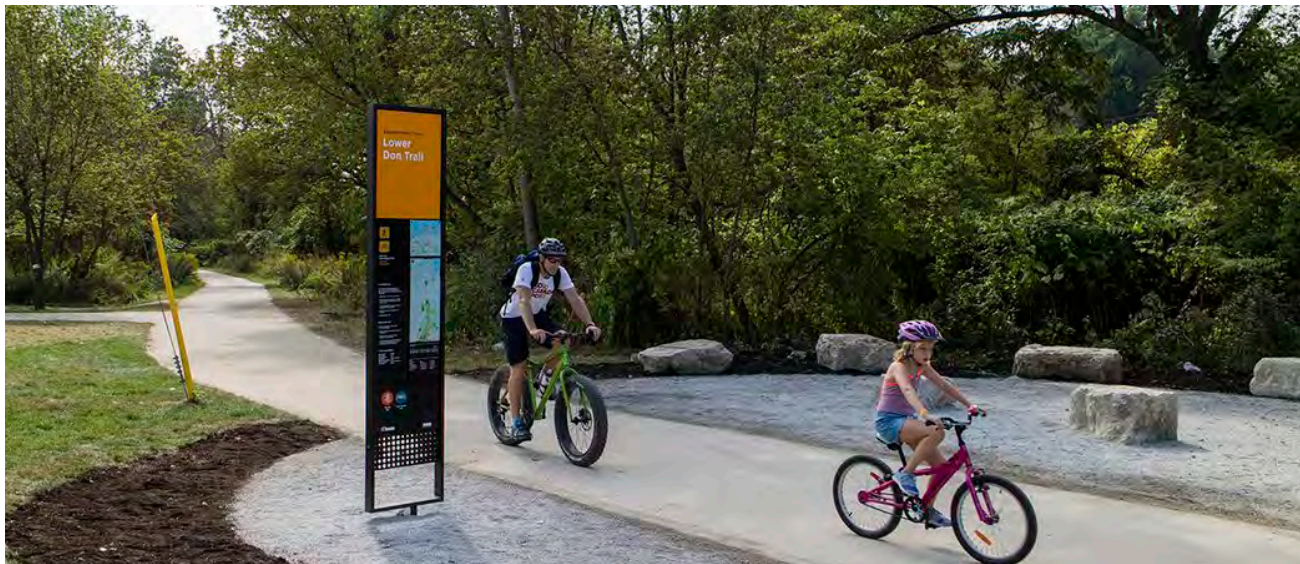


- 1800 ST CLAIR PARK LAND
- - - DEDICATION OUTLINE
- SPLASH PAD OUTLINE



SPLASH PAD SCALE STUDY

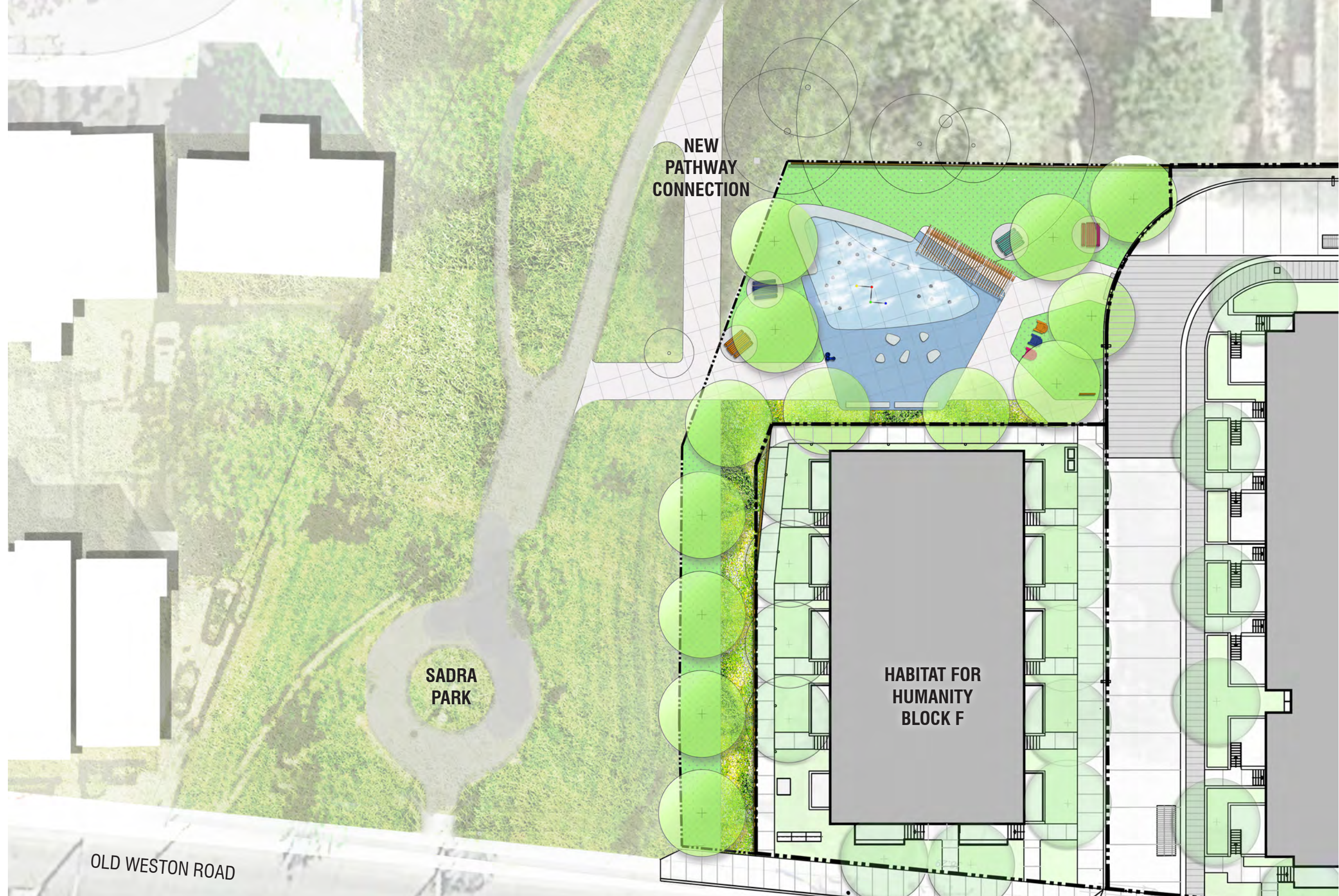






SPLASH PAD FEATURE PRECEDENTS

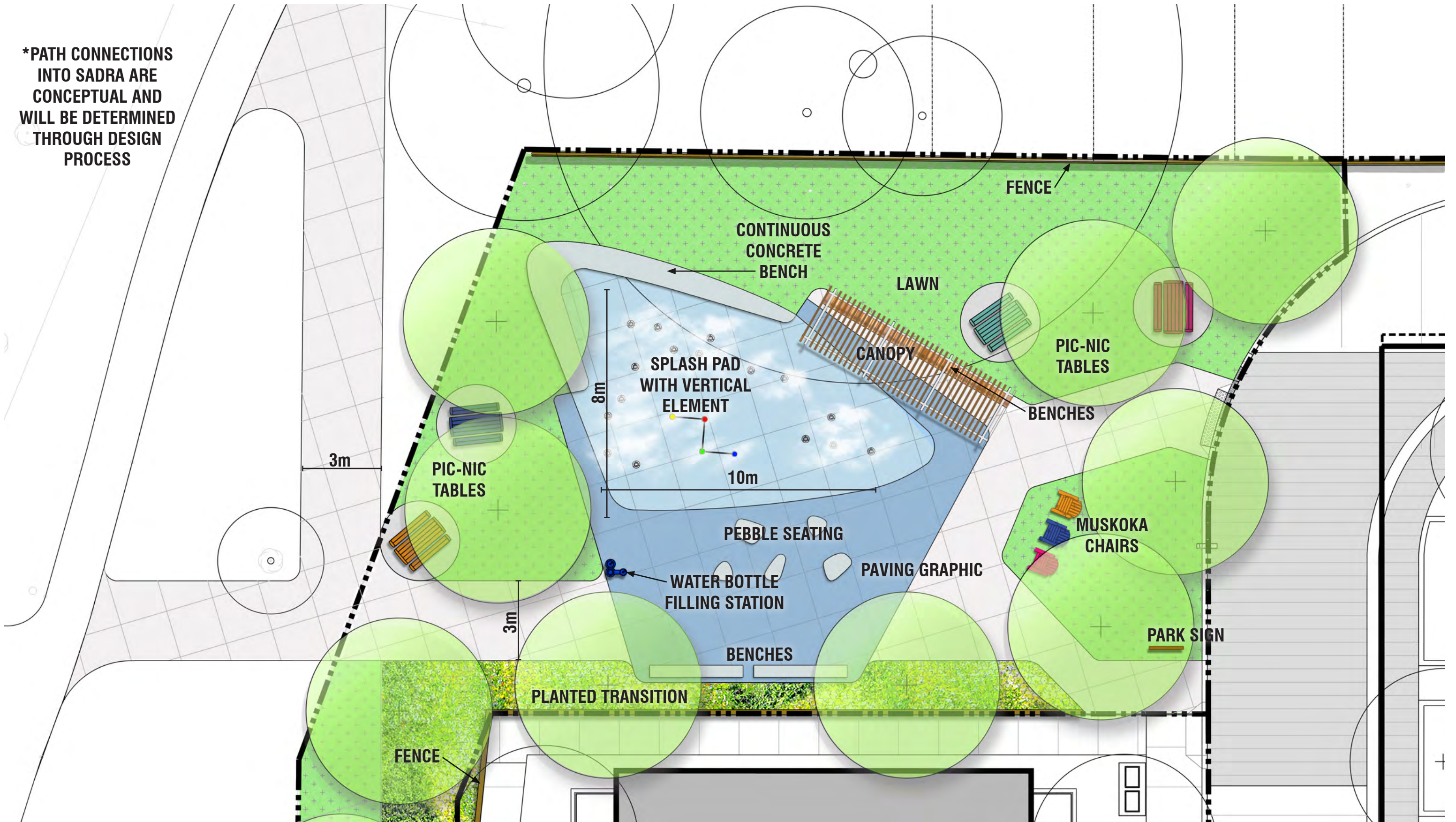




*PATH CONNECTIONS INTO SADRA ARE CONCEPTUAL AND WILL BE DETERMINED THROUGH DESIGN PROCESS



*PATH CONNECTIONS INTO SADRA ARE CONCEPTUAL AND WILL BE DETERMINED THROUGH DESIGN PROCESS



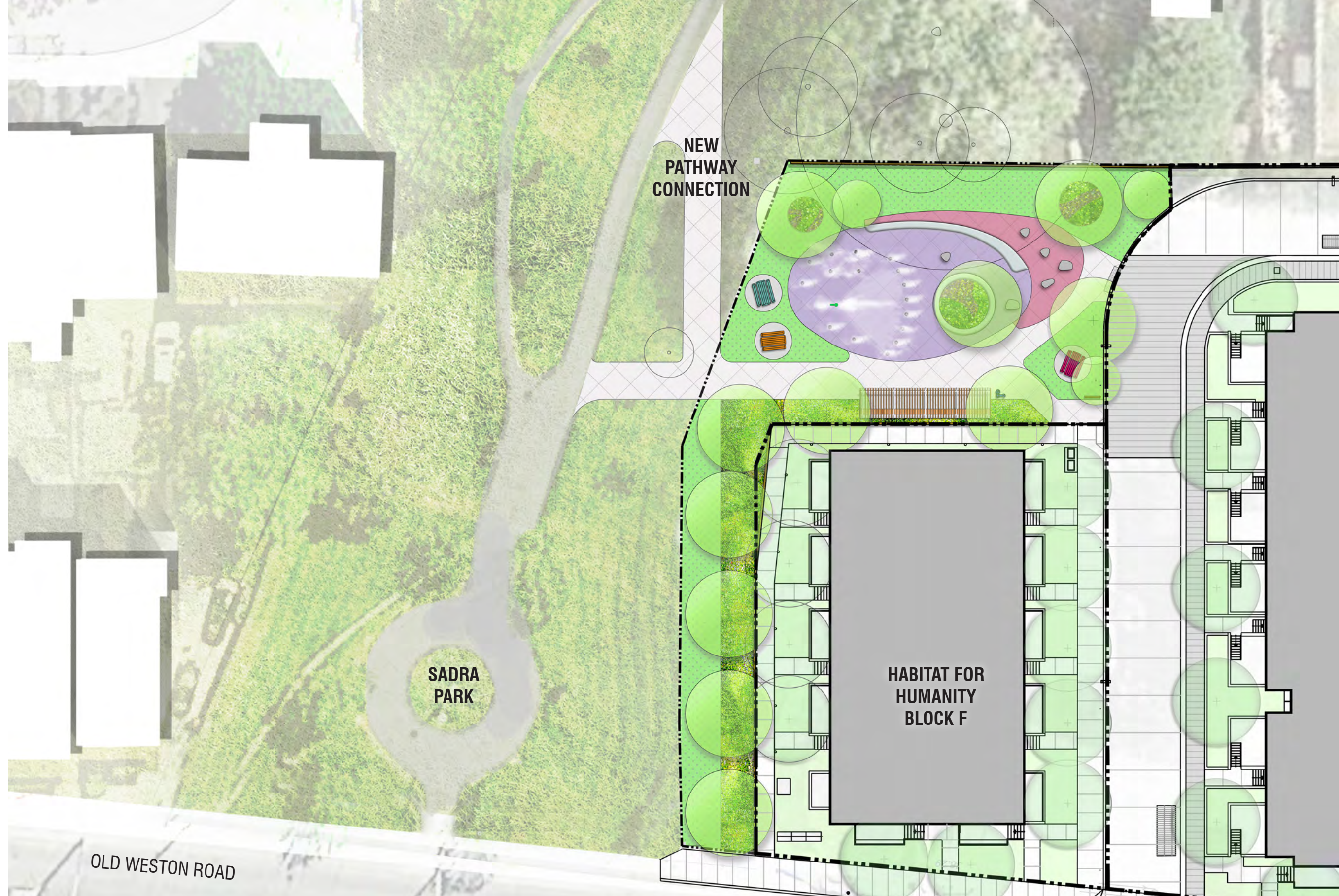
PARK DESIGN OPTION 1 - BOOMERANG

1:75



DIAMOND KILMER DEVELOPMENTS

Janet Rosenberg & Studio



OLD WESTON ROAD

NEW
PATHWAY
CONNECTION

SADRA
PARK

HABITAT FOR
HUMANITY
BLOCK F

*PATH CONNECTIONS INTO SADRA ARE CONCEPTUAL AND WILL BE DETERMINED THROUGH DESIGN PROCESS



PARK DESIGN OPTION 2 - OBLONG

1:300



DIAMOND KILMER
DEVELOPMENTS

Janet
Rosenberg
& Studio

*PATH CONNECTIONS INTO SADRA ARE CONCEPTUAL AND WILL BE DETERMINED THROUGH DESIGN PROCESS



PARK DESIGN OPTION 2 - OBLONG

1:75

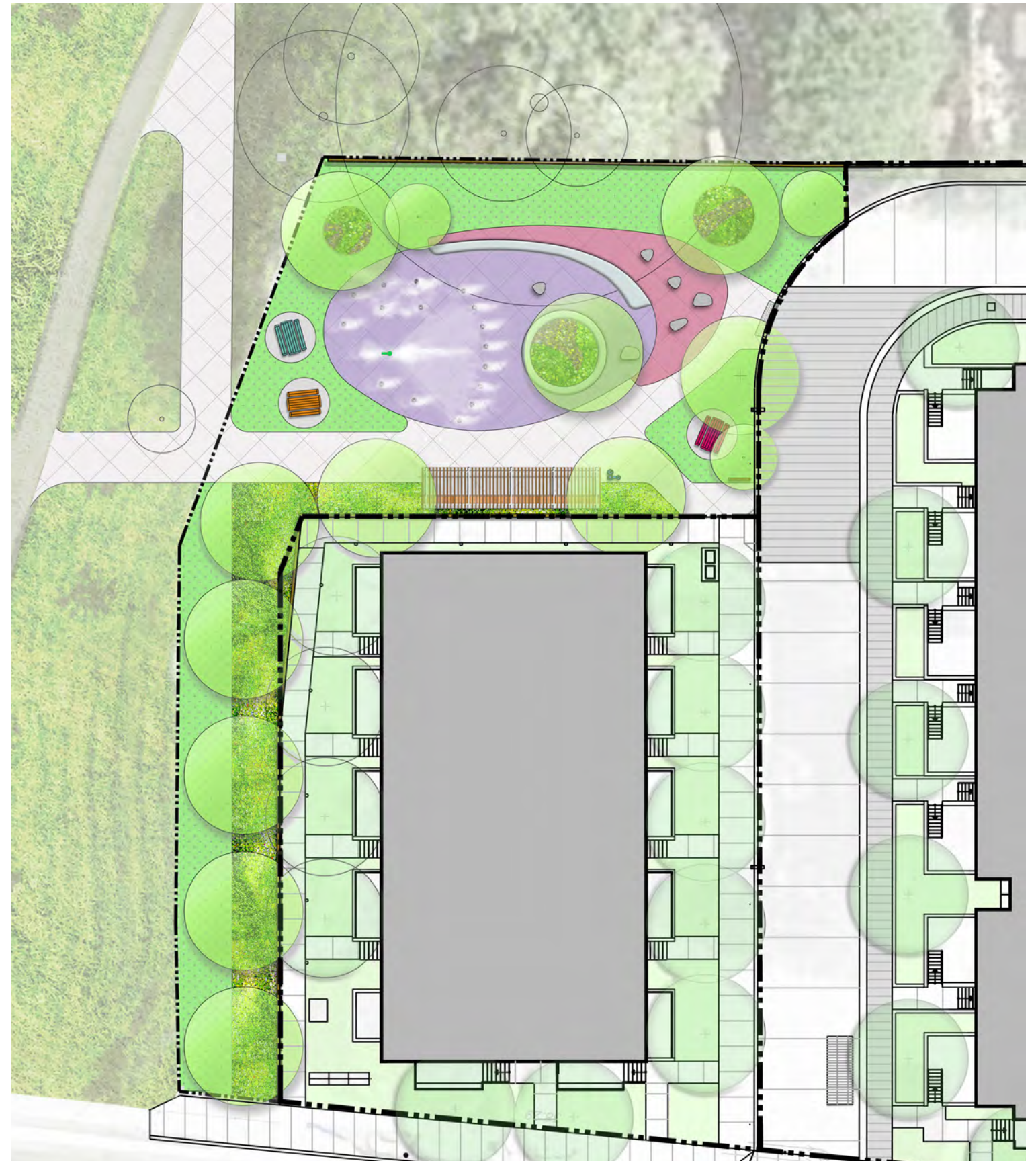


DIAMOND KILMER DEVELOPMENTS

Janet Rosenberg & Studio



PARK DESIGN OPTION 1 - BOOMERANG



PARK DESIGN OPTION 2 - OBLONG

NEXT STEPS

- **The City will set up a website with information on the park as the design moves forward**
- **Please sign in to join the mailing, and feel free to contact:**

The City of Toronto

Erika Richmond, Parks, Forestry and Recreation

Erika.Richmond@toronto.ca

416-338-8710

Diamond Corp.

Meghan Obermayer, Development Planner

mobermayer@diamondcorp.ca

416-324-5450



DIAMOND KILMER
DEVELOPMENTS

Janet
Rosenberg
& Studio



THANK YOU!



DIAMOND KILMER
DEVELOPMENTS

Janet
Rosenberg
& Studio