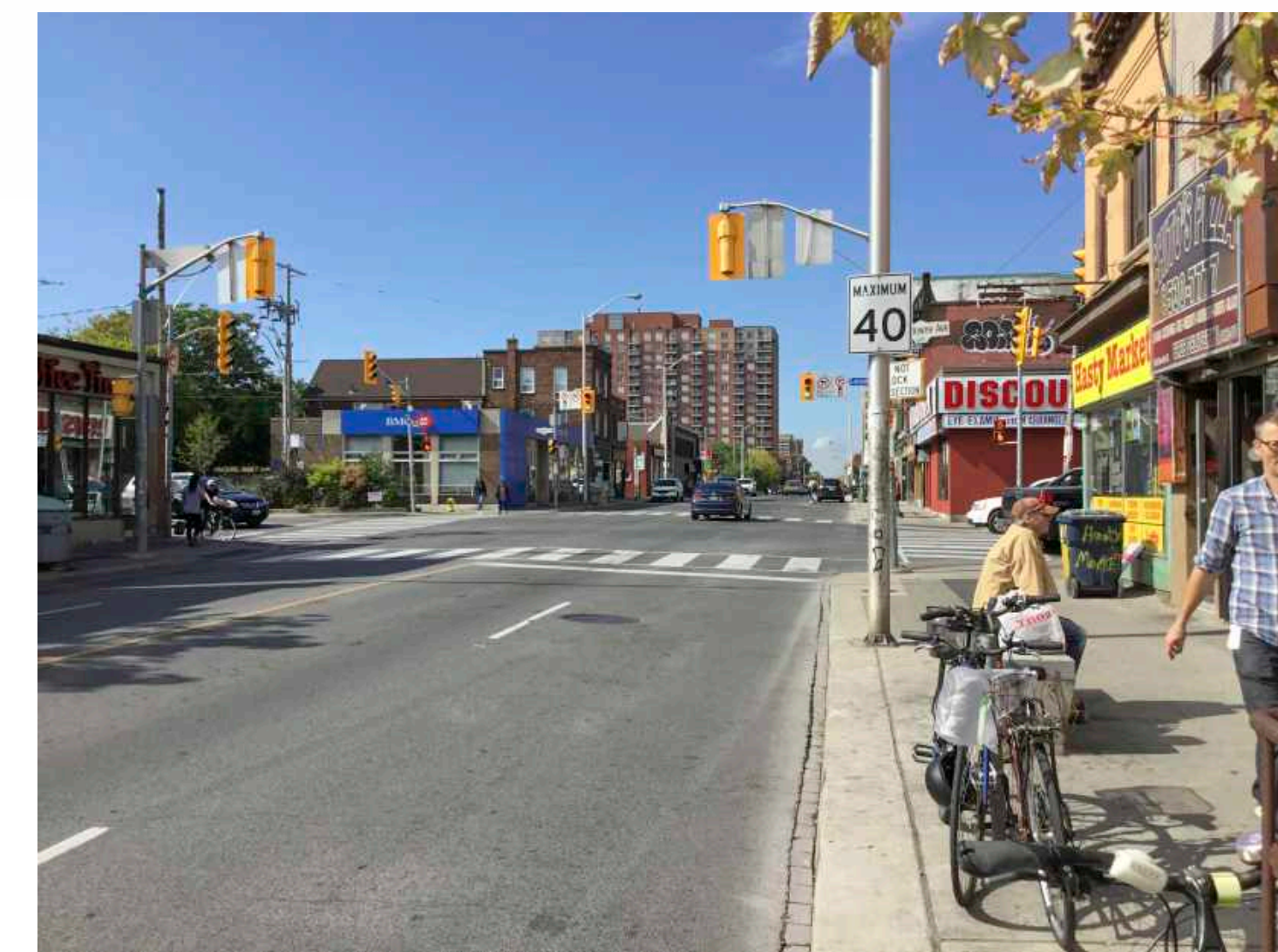
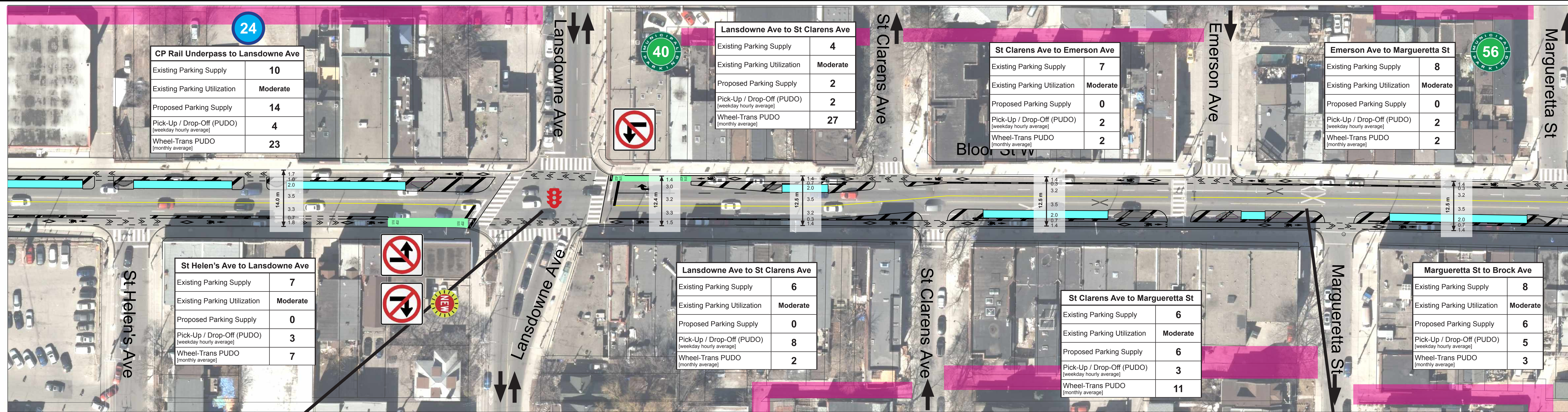
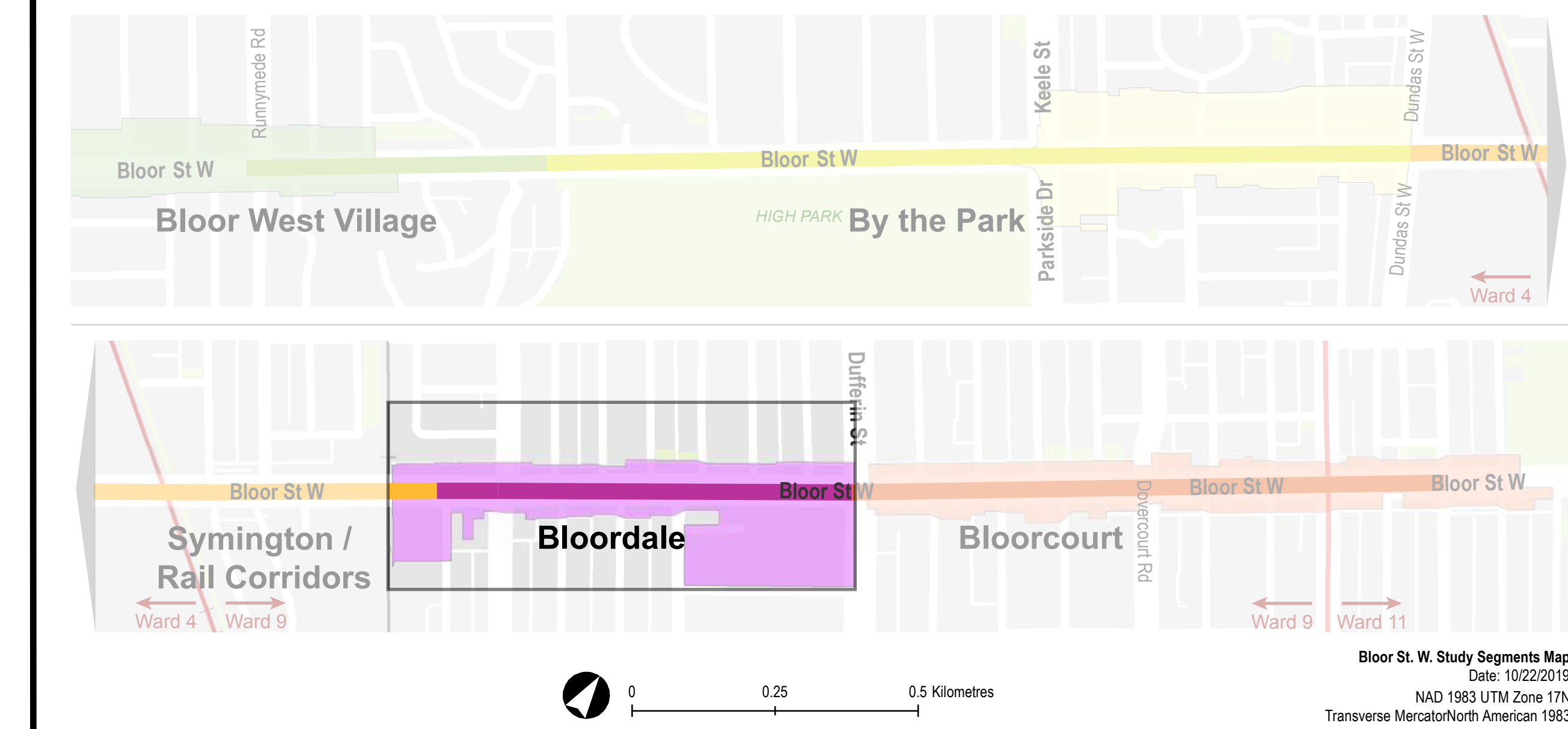
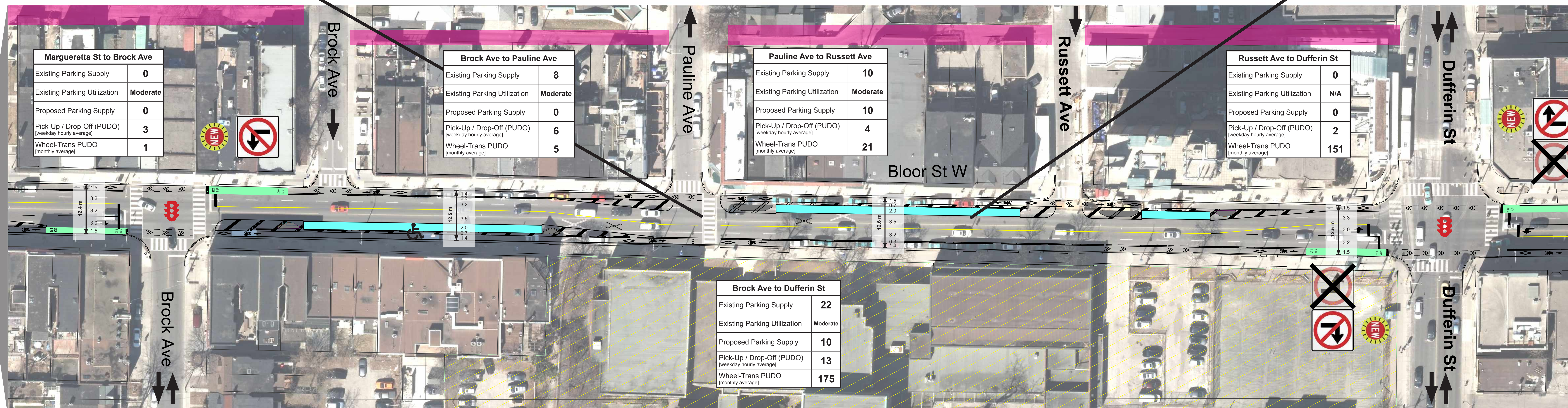
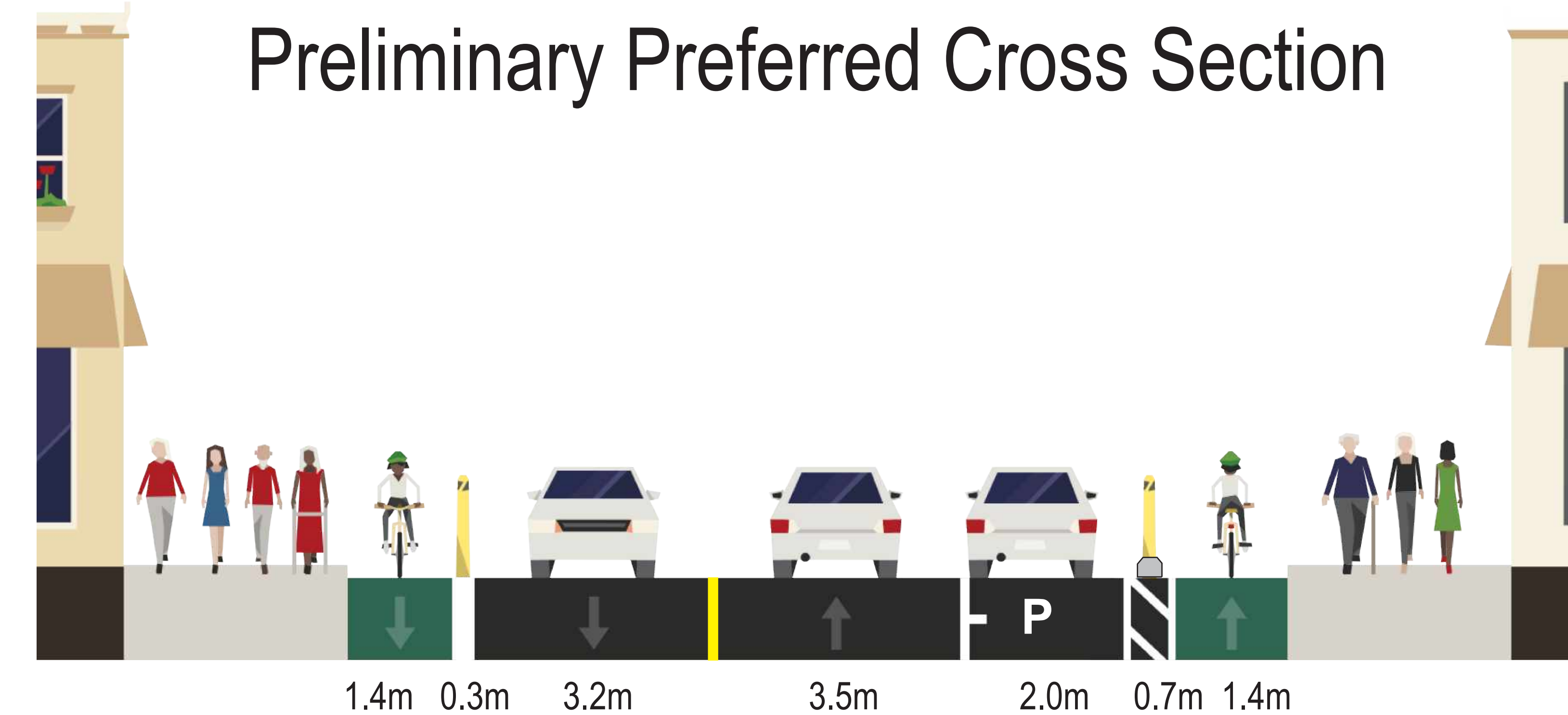


## Bloordale



### Criteria for determining whether parking should be provided on for the north side or south side of Bloor St:

- the parking supply on each side of the street
- the parking utilization on each side of the street
- the proximity of off-street parking lots
- the frequency of pick-ups and drop-offs on each side of the street
- the frequency of Wheel-Trans pick-ups and drop-offs on each side of the street
- the feasibility of side streets and laneways to accommodate deliveries
- the side of the street with fewer driveways



### Legend

- Active Development Application
- Proposed On-Street Parking / Loading Zone
- Laneways
- Signalized Intersection
- TPA Off-Street Parking Lot & Parking Supply
- Private Off-Street Parking Lot & Parking Supply
- Turn Restriction
- Existing Turn Restriction That Would Be Removed
- New Turn Restriction
- Existing Accessible Parking/Loading Space That Will Be Maintained

SCALE HORIZONTAL 1:400