

City of Toronto – Parks Development & Capital Projects

Osler Playground Park Program and Visioning Workshop

December 11, 2019

Feedback Summary

Katy Aminian, Senior Project Coordinator
Daniel Fusca, Manager Public Engagement



Contents

| | |
|---|----|
| Introduction..... | 2 |
| Park Program and Visioning Workshop | 2 |
| Public Meeting Advertisement..... | 2 |
| Online Feedback Form | 2 |
| Feedback Summary | 3 |
| Group 1 Vision..... | 4 |
| Group 1 Maps..... | 4 |
| Group 1 Workshop Questions | 5 |
| Group 2 Vision..... | 7 |
| Group 2 Maps..... | 7 |
| Group 2 Workshop Questions | 8 |
| Group 3 Vision..... | 9 |
| Group 3 Maps..... | 9 |
| Group 3 Workshop Questions | 10 |
| Group 4 Vision..... | 11 |
| Group 4 Maps..... | 11 |
| Group 4 Workshop Questions | 12 |
| Group 5 Vision..... | 13 |
| Group 5 Maps..... | 13 |
| Group 5 Workshop Questions | 14 |
| Group 6 Vision..... | 16 |
| Group 6 Maps..... | 16 |
| Group 6 Workshop Questions | 17 |
| Next Steps..... | 18 |
| Contact Us..... | 18 |

Introduction

This document provides a summary of the Park Program and Visioning Workshop for the Osler Playground Revitalization that was held on December 11, 2019.

[More information about the project can be found on the project webpage.](#)

Park Program and Visioning Workshop

The purpose of this workshop was to discuss the community's vision for park improvements, develop initial ideas for the park uses, activities and layout, and develop criteria for hiring a park designer.

Public Meeting Advertisement

To increase awareness of the revitalization project and the public meeting among area residents:

- Flyers were distributed to 4042 households within the neighbourhood surrounding the park
- Councillor Cressy [provided information on his webpage](#):
- A Facebook event was created and promoted to users in the area

Online Feedback Form

[An online survey will be available from January 13 – January 27, 2020.](#) The survey builds on the work achieved at the Park Program and Visioning Workshop. Survey participants can review the park maps and visions created during the workshop, pick their favourite design, and provide additional comments and feedback.

To maximize the amount of feedback we receive from community members, the Online Feedback form will also be promoted through the following channels:

- Email to workshop participants, who will be invited to share the survey with friends and neighbours who could not attend the in-person meeting
- Councillor Cressy's monthly newsletter
- [Osler Playground Revitalization project webpage](#)
- Facebook advertisement targeting area residents

Feedback Summary

Using a scale map of the current layout of Osler Playground, groups were asked to use sticky notes to map out their ideal vision of the park layout:

- Green sticky notes marked green space
- Pink sticky notes marked the playground
- Blue sticky notes marked the water play area
- Orange sticky notes marked the formal dog off-leash area
- Yellow sticky notes mark additional uses for the park
- Masking tape marked the ideal pathways through the park

Groups were then asked to answer a series of questions to help define a shared community vision for the park and identify priorities for the park's revitalization.

The following summary provides images of both the original sticky note maps and the digitized version of these maps, as well as the community vision and priorities from each group.

Group 1 Vision

Group 1 Maps



Approximate sizes of various features in this vision:

- Dogs Off-Leash Area: 1000 m²
- Playground: 700 m²
- Waterplay: Same as existing (approximately 400 m²)
- Greenspace: approx. 4000 m²
- Hard Surface Play Area: 1000 m²
- Running Track: Not included

Group 1 Workshop Questions

1. What makes Osler Playground a great neighbourhood park?

- Great for small kids – park toys – sand
- A lot of shade
- Community engagement
- Off the big streets
- Fenced in, informal off-leash area
- Active – kids, dogs
- Well-used because of increased density
- Utility of the park – throughout the year
- Options – shade/sun
- Swings
- Hub for kids in the neighbourhood
- Playground, birthday parties, wading pool
- Changing demographics
- There is a formula here that works
- It's small, intimate
- It's lived in
- Cannot exist as is for another year or two
- If a dog park is coming, need water, garbage cans, etc as they are currently using the kids area

2. As a team, discuss your objectives for the revitalization of the park. Do you agree with the priorities identified through previous consultations? Has anything changed since those consultations were undertaken that might lead to different priorities?

- Good quality mediated off-leash area with fence, separate from playground
- Has to work for how people are already using it
- Maintain:
- flexible open space

- shady areas
- walk thru
- playground
- concern re loss of basketball court area to portables and soccer field to the off-leash area
- enlarged playground
- public life survey
- more seating – some with backs
- formal plan for off-leash area
- Keep the trees!
- Keep the fabric +
- Natural features, back to basics
- How will potential conflict be mediated with renewal of school use?

3. Define a shared vision for the future of Osler Playground, as a result of the revitalization. Your shared vision should be just a few sentences, written in the present tense, and be aspirational.

The new park will accommodate and balance the spaces and uses of the park for all users throughout the year.

Let's keep the fabric that makes it feel lived in.

Drive to define a solution that meets the competing needs.

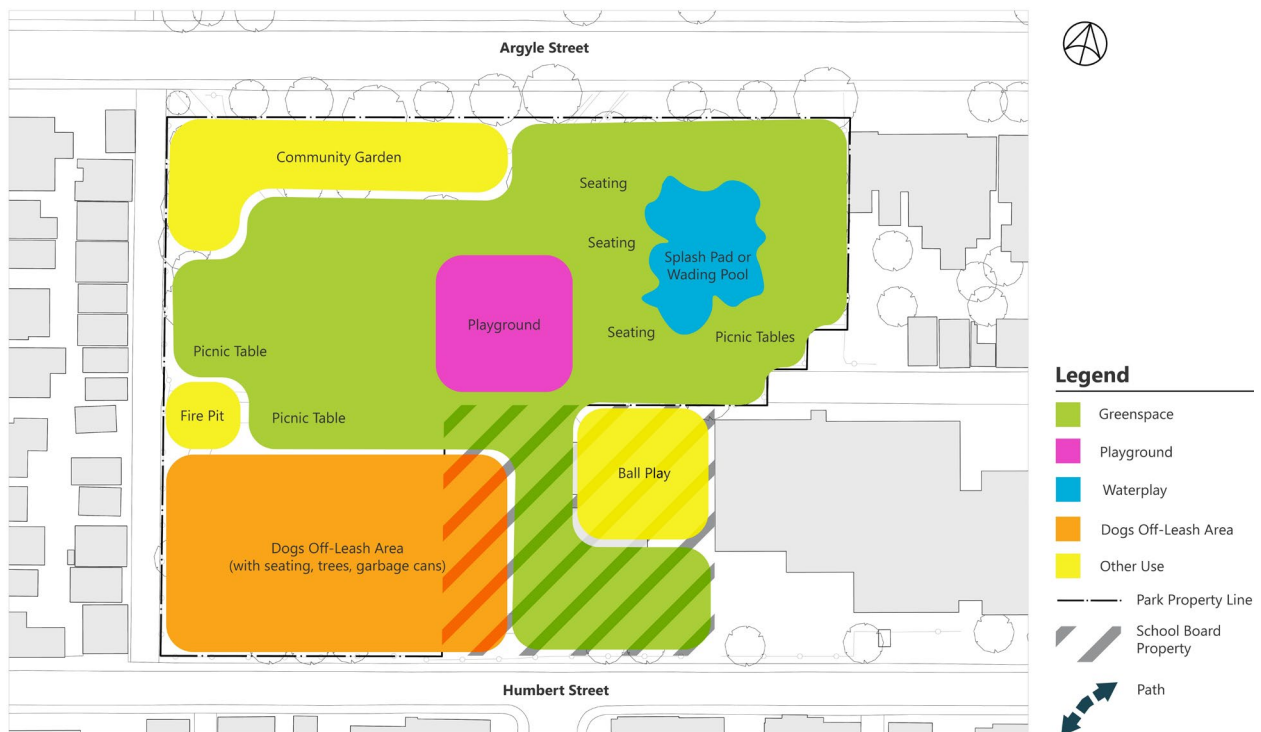
Keep DOLA separate from school grounds.

Additional comments:

Move the fence to the property line.

Group 2 Vision

Group 2 Maps



Approximate sizes of various features in this vision:

- Dogs Off-Leash Area: 1500 m²
- Playground: 700 m²
- Waterplay: 400 m²
- Greenspace: 4250 m²
- Community Garden: 600 m²
- Fire Pit: 100 m²
- Ball Play: 400 m²
- Running Track: Not included

Group 2 Workshop Questions

1. What makes Osler Playground a great neighbourhood park?

- Hidden gem – less busy than Trinity
- Great sense of community
- Less smokers, drinkers
- Large mature trees
- Green space/combined with other usage
- Many uses for the space – well shared
- Splash pad
- Not as aggressive of a dog park

2. As a team, discuss your objectives for the revitalization of the park. Do you agree with the priorities identified through previous consultations? Has anything changed since those consultations were undertaken that might lead to different priorities?

Objectives for the revitalization of the park:

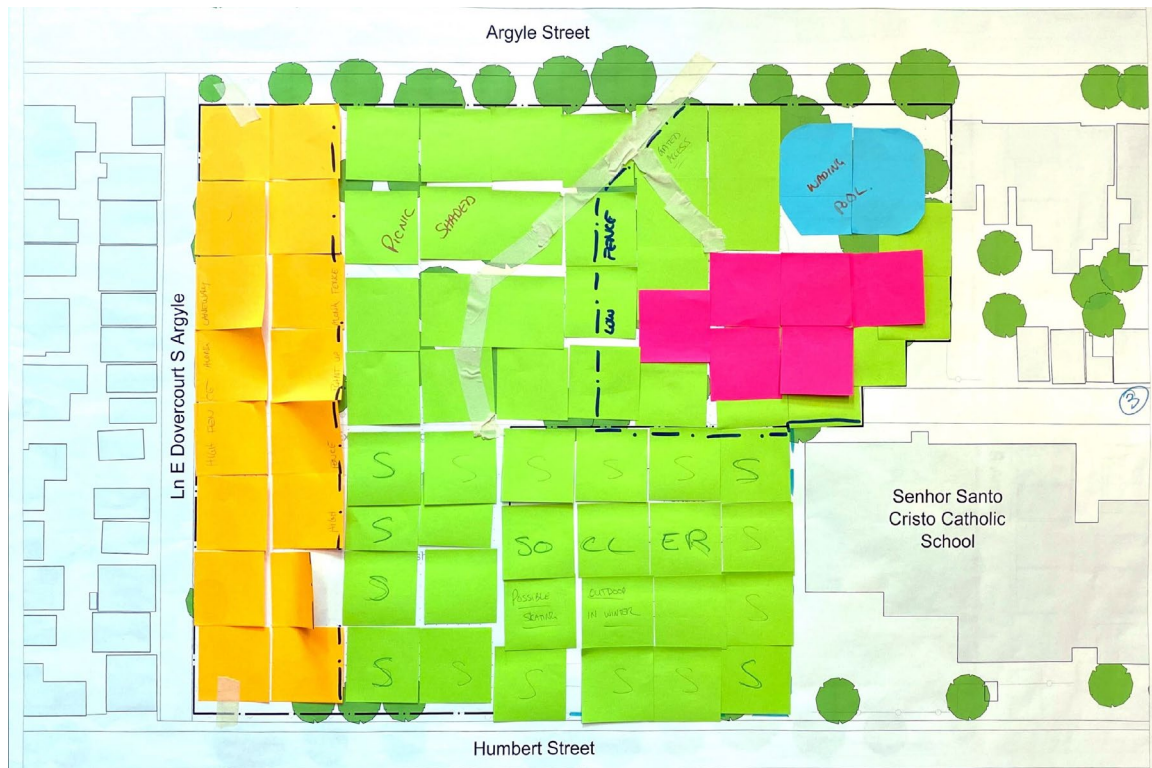
- Safety – cannot use the space for both kids and dogs. Clear rules for dogs. Clear signage.
- Community garden
- Green Space

3. Define a shared vision for the future of Osler Playground, as a result of the revitalization. Your shared vision should be just a few sentences, written in the present tense, and be aspirational.

A safe hidden gem that welcomes all members of the community. An accessible space that has clearly designated areas. A well-used hub of activity.

Group 3 Vision

Group 3 Maps



Approximate sizes of various features in this vision:

- Dogs Off-Leash Area: 1600 m²
- Playground: 600 m²
- Waterplay: 400 m²
- Greenspace: 2200 m²
- Soccer: 2400 m²
- Running Track: Not included

Group 3 Workshop Questions

1. What makes Osler Playground a great neighbourhood park?

- The existing wading pool, used by kids of all ages, from swimming to skateboarding (sic) all year
- PLAYGROUND IS NICE for families/children
- Dog area great social gathering
- Picnic area for couples
- Older people using benches
- Convenient and easy access

2. As a team, discuss your objectives for the revitalization of the park. Do you agree with the priorities identified through previous consultations? Has anything changed since those consultations were undertaken that might lead to different priorities?

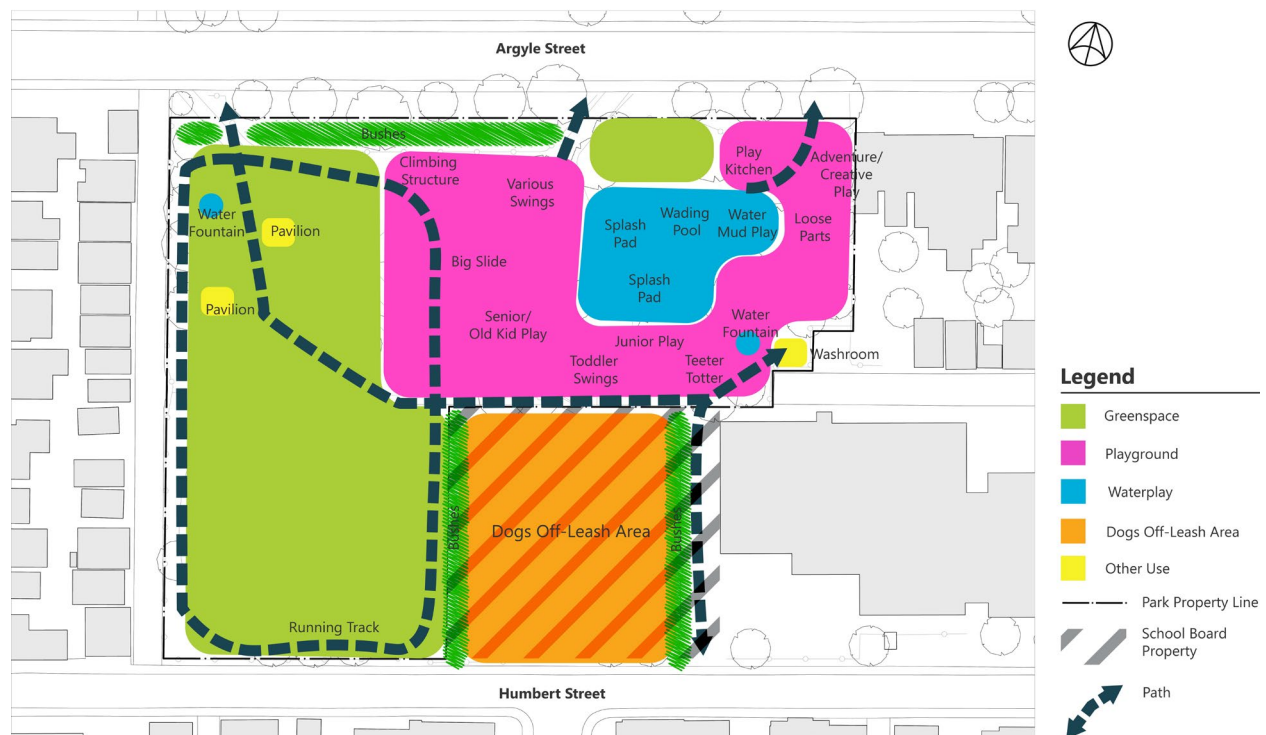
- To keep the wading pool and if you can add a splash pad
- Add benches for people watching/reading and more area for picnics
- Get a soccer pitch back no track
- Create buffer zone between dogs and kids
- Expand playground area
- Need to use underutilized areas like corners
- Use park next to laneway for dog. Thees (sic) better utilization
- Soccer area can be used for outdoor skating rink in winter
- DOG PARK NEEDS HIGH FENCE. Use laneway for this as a low priority area

3. Define a shared vision for the future of Osler Playground, as a result of the revitalization. Your shared vision should be just a few sentences, written in the present tense, and be aspirational.

An inviting space for all in the community to use, while segregating the uses so as to maximize enjoyment + safety. Adapt to the changing demographics (more kids) with larger wading and play areas. Similar improve usefulness to changing lifestyle (apartment/condo), which needs more outdoor quiet space (picnic).

Group 4 Vision

Group 4 Maps



Approximate sizes of various features in this vision:

- Dogs Off-Leash Area: 1200 m²
- Playground: 2000 m²
- Waterplay: 500 m²
- Greenspace: 3000 m²
- Running Track: Yes

Group 4 Workshop Questions

1. What makes Osler Playground a great neighbourhood park?

- Trees and shade
- Quiet location
- Teeter totter
- Variety of ages can enjoy the playground
- Dog area fenced off

2. As a team, discuss your objectives for the revitalization of the park. Do you agree with the priorities identified through previous consultations? Has anything changed since those consultations were undertaken that might lead to different priorities?

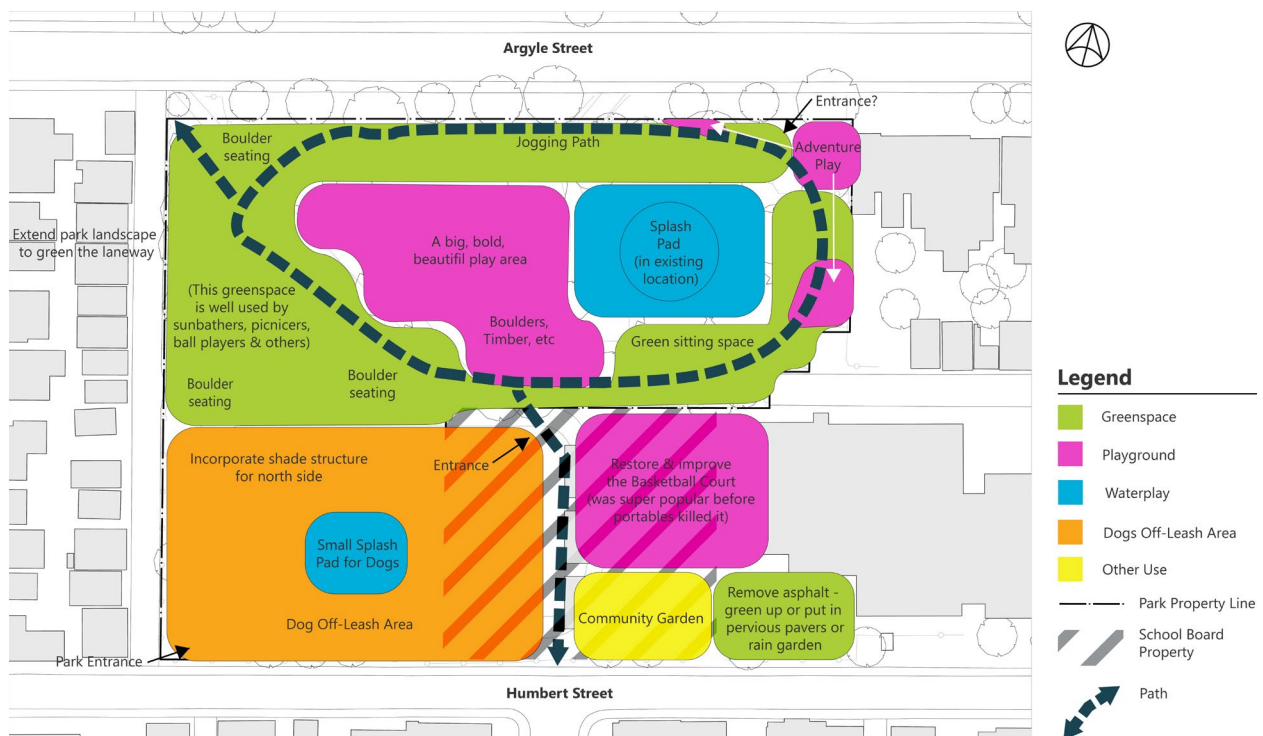
Yes we also think a washroom should be a priority.

3. Define a shared vision for the future of Osler Playground, as a result of the revitalization. Your shared vision should be just a few sentences, written in the present tense, and be aspirational.

Our vision is to create a park that is more open and appealing to all age groups. Children are able to engage in creative play. The field is open for ball play and family picnics. Dog owners have their own area away from runners and kids.

Group 5 Vision

Group 5 Maps



Approximate sizes of various features in this vision:

- Dogs Off-Leash Area: 1950 m²
- Playground: 1500 m²
- Waterplay: 600 m²
- Greenspace: 1900 m²
- Community Garden: 400 m²
- Running Track: Yes

Group 5 Workshop Questions

1. What makes Osler Playground a great neighbourhood park?

- Room for everyone
- Micro spaces – intimate playground and "suburban" areas that surround the playground
- Open areas of sunshine, good areas of shade
- The layout works well as is

2. As a team, discuss your objectives for the revitalization of the park. Do you agree with the priorities identified through previous consultations? Has anything changed since those consultations were undertaken that might lead to different priorities?

- Landscape elements – sand, boulders, wood, dirt – perhaps spread throughout the pathways – meandering pathways
- Extend the landscape of the park into the laneway – add green water management infrastructure to the laneway
- Coordinate park with lane resurfacing
- Keeping the north side essentially the same with upgraded facilities
- A meandering path
- A clear north-south pedestrian route between Argyle St. & Humbert Street
- Reconsider fence design to better quality chain link or green fencing. Perhaps sound reduction?

3. Define a shared vision for the future of Osler Playground, as a result of the revitalization. Your shared vision should be just a few sentences, written in the present tense, and be aspirational.

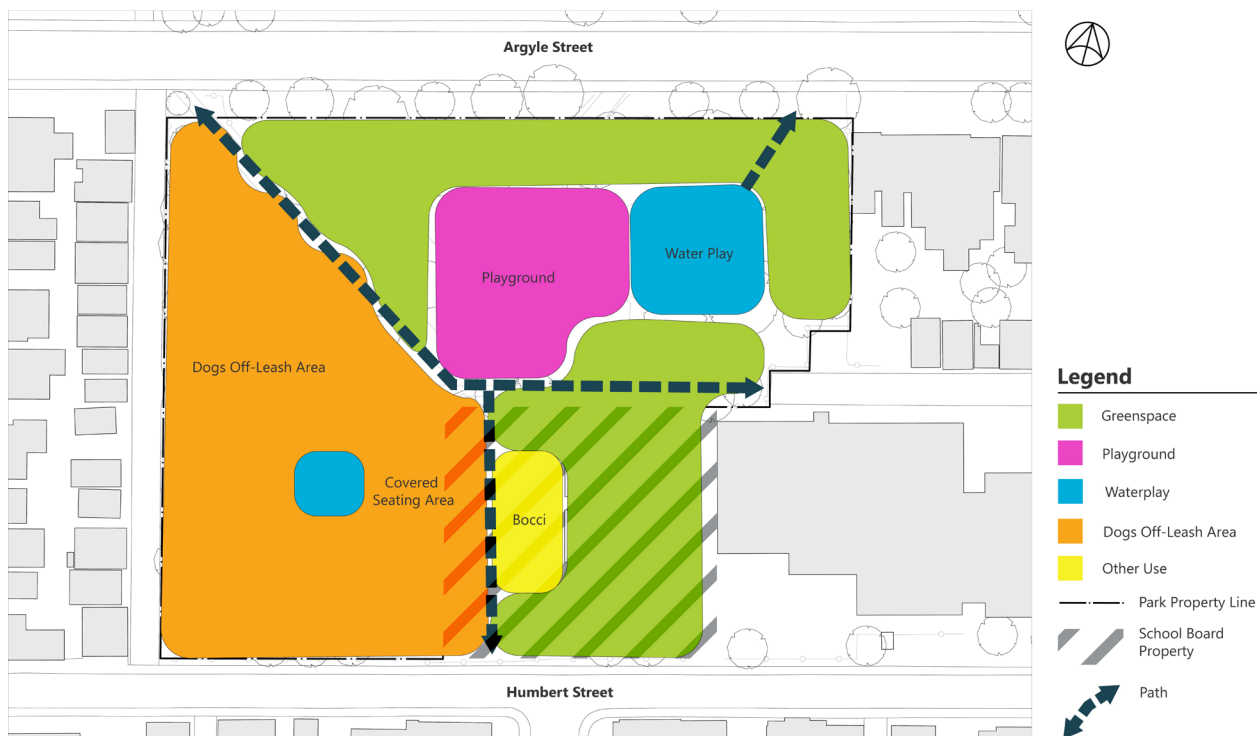
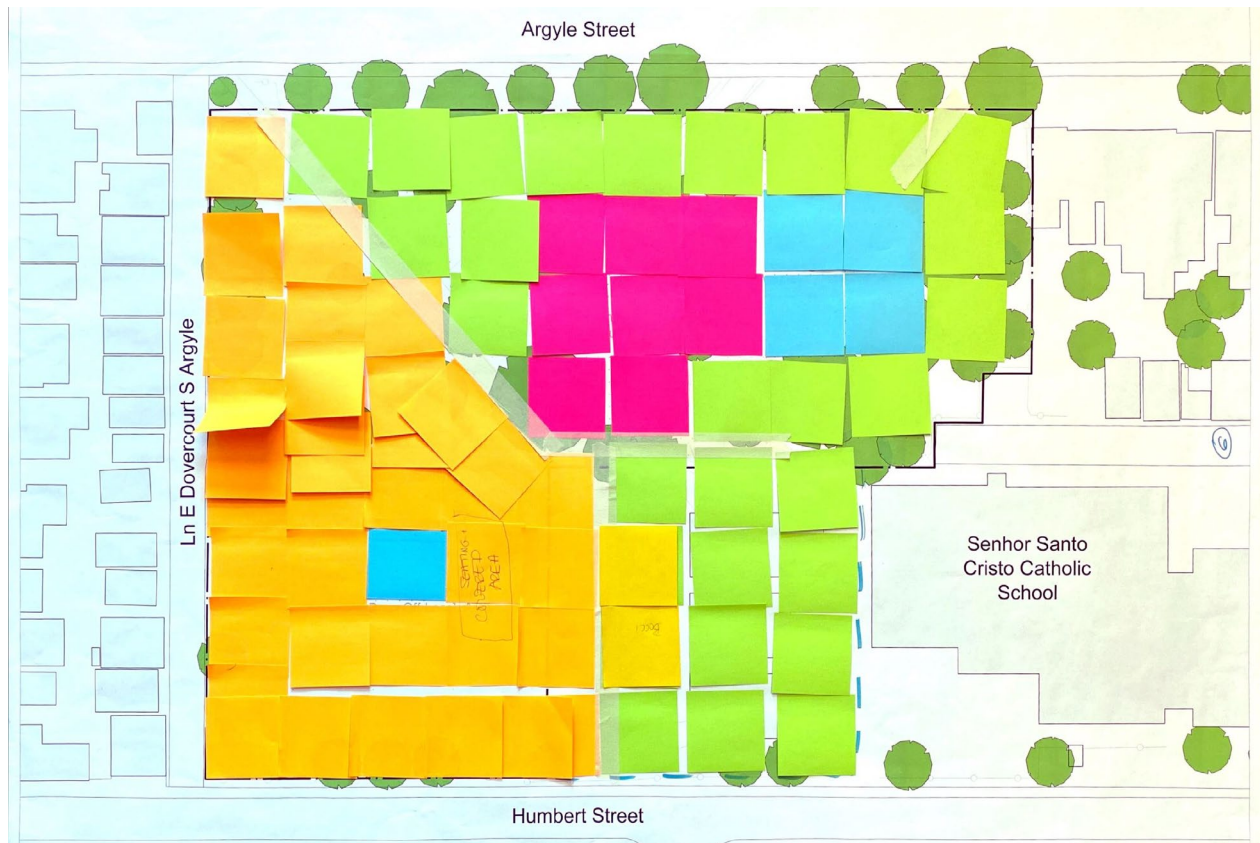
Osler Playground is a multi-purpose, adventure activity and relaxation zone serving the needs of kids, adults, dogs, and random wildlife. A space for all lifeforms to play, gather, escape, and rejuvenate.

Additional comments:

- The park works very well, in general. Let's not tinker too much with layout and flow. Improve and upgrade what's already here.
- Dog area should be large enough to allow dogs a good run at speed
- There is a strong need for space for dogs in this community. Please keep as much space open to dogs as possible.
- Non mud/dirt material for dog area – easy on dog paws
- Install a green bin for dog poop
- Perhaps remove the tall fence surrounding the park and replace it with a nicely designed fence or art?
- Extend park landscape to green the laneway
- Instead of a Running Track, how about a Jogging Path? Not entirely sure that a track is even needed?
- The soccer pitch might have to go. If basketball is available, the kids will be fine.
- Existing water play area works well. Beautifully surrounded by trees, excellent mix of shade and sun

Group 6 Vision

Group 6 Maps



Approximate sizes of various features in this vision:

- Dogs Off-Leash Area: 3000 m²
- Playground: 800 m²
- Waterplay: 400 m²
- Greenspace: 2700 m²
- Bocci Court: 400 m²
- Running Track: Not included

Group 6 Workshop Questions

1. What makes Osler Playground a great neighbourhood park?

You need to provide better masking tape.

2. As a team, discuss your objectives for the revitalization of the park. Do you agree with the priorities identified through previous consultations? Has anything changed since those consultations were undertaken that might lead to different priorities?

My hope is that there will be some clear rules about the dog park from now until the park is complete. There is a lot of tension between the users and the dogs are destroying the grass.

3. Define a shared vision for the future of Osler Playground, as a result of the revitalization. Your shared vision should be just a few sentences, written in the present tense, and be aspirational.

Please try to phase construction so that we only lose 1 summer. Generally believe less design is often more. Prioritize sustainable & resilient design. Thanks for your efforts!

Next Steps

As noted earlier in this report, the online feedback survey will be launched on January 13, 2020 and will be posted until January 27, 2020. Feedback from the survey will then be gathered and analyzed to determine a preferred master plan and combination of amenities. The outcomes of this review will be shared back with participants, and will become the basis for hiring a design consultant in Winter/Spring 2020.

Additional consultation with the public will occur once the design consultant has been hired. The consultant will prepare design concept options and, in consultation with community members and other stakeholders, a preferred concept plan will be confirmed and developed into a construction documentation package.

It is anticipated that a contractor will be hired in Winter 2020/21 and park construction will take place from Spring 2021 through Spring 2022.

Contact Us

For questions or comments related to this project, please contact:

Katy Aminian
Senior Project Coordinator
City of Toronto Parks, Forestry and Recreation
416-397-4084