



# Weston Road Improvements Public Information Event

Artscape Weston Common    March 2, 2020

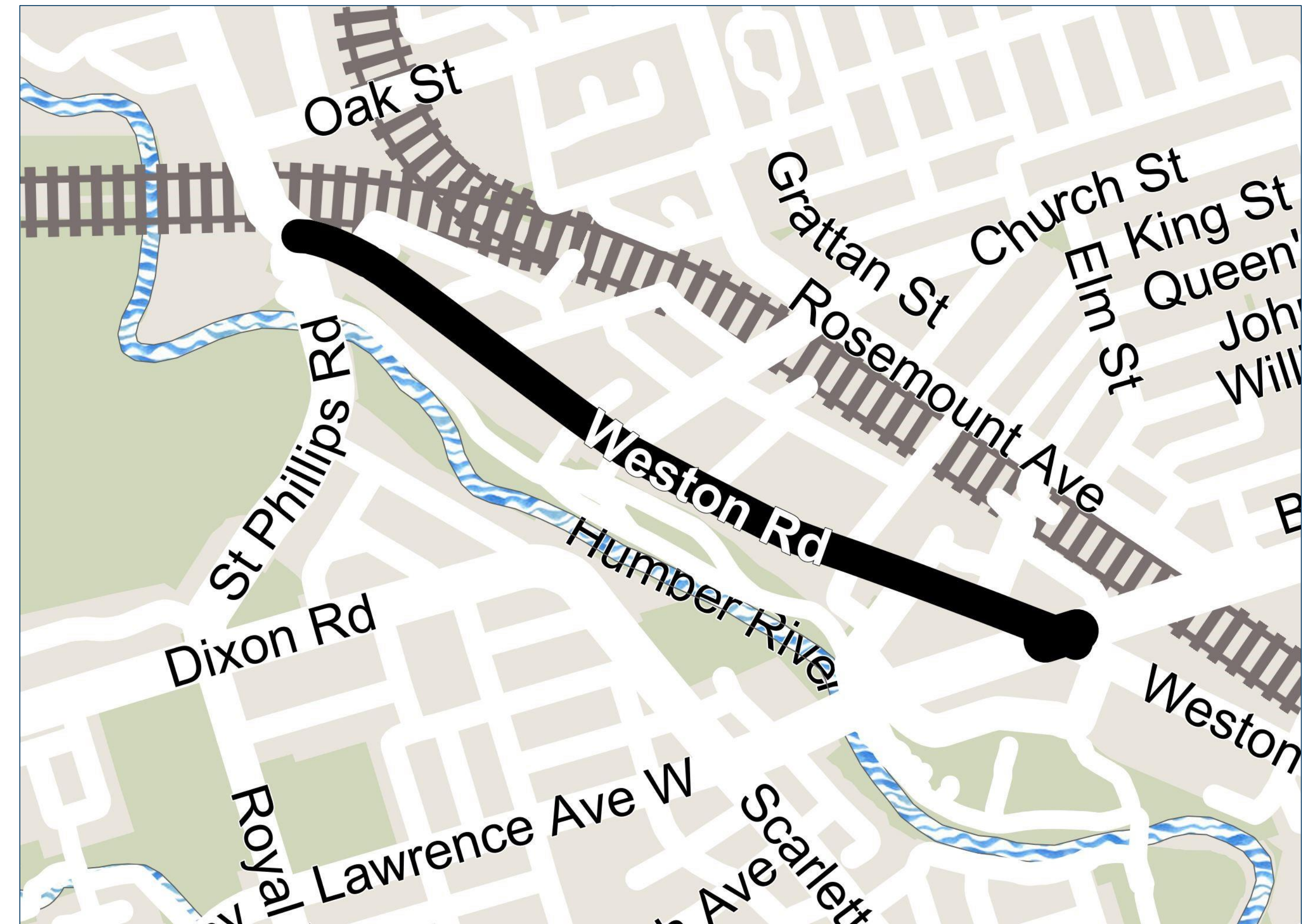


# PROJECT OVERVIEW

**The City of Toronto is carrying out a number of combined road work projects on Weston Road, from Lawrence Avenue West to Humberview Crescent.**

Work on this project will involve:

- Replacing sections of the storm sewer and sanitary sewer
- Replacing substandard water service lines
- Making design changes to several intersections to improve safety
- Sidewalk improvements and streetscaping
- Removing and replacing the asphalt surface
- Relocating TTC stops
- Restoring areas affected by construction

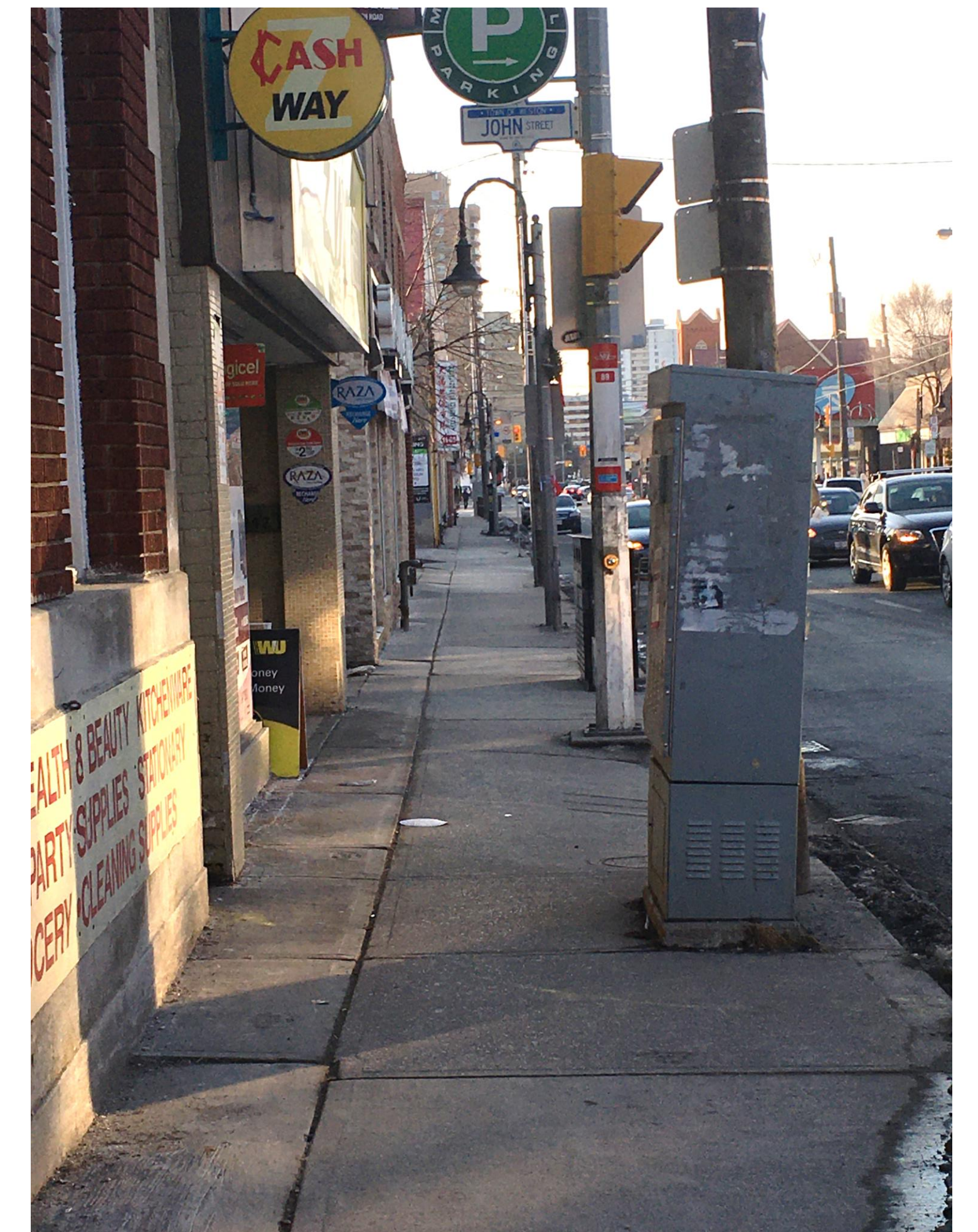


Work is anticipated to begin in May 2020 and be completed by December 2021.  
There will be a winter shut down between December 2020 and April 2021.



# WHY IS THIS WORK PLANNED?

- The existing storm and sanitary sewers are nearing the end of their service lifespans and need to be replaced.
- Replacing the storm and sanitary sewers involves major road work. This presents an opportunity to complete other infrastructure improvements that are needed, such as:
  - Road reconstruction and resurfacing
  - Curb and sidewalk repairs
  - Road safety improvements
  - Public space enhancement





# STORM & SANITARY SEWER REPLACEMENT

Replacement of sanitary sewers:

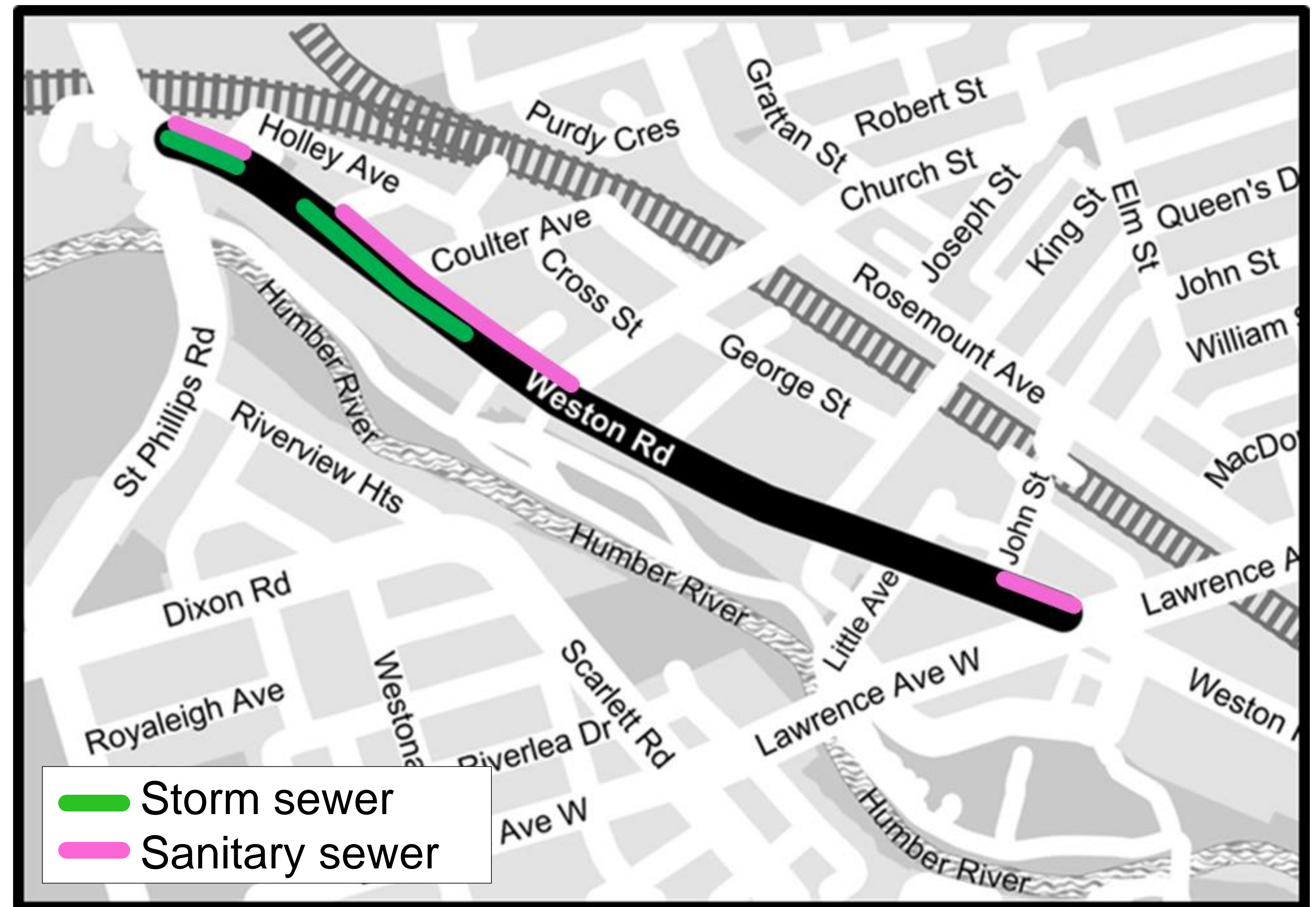
- Lawrence Ave. West to John Street
- Church Street to Rectory Road
- Parke Street to St. Phillips Road

Replacement of storm sewers:

- Elphick Lane to 80m north of Rectory Road
- Parke Street to St. Phillips Road

At locations where sewers are being replaced, the City will replace the City-owned portion of all substandard water services.

A water service is the pipe that brings water from the water main to a property. The City-owned portion extends from the water main to the property line.





# INTERSECTION IMPROVEMENTS

Intersection safety improvements are part of the City of Toronto's **Vision Zero Road Safety Plan**, which aims to eliminate collisions that result in death and serious injury.



Road construction presents an opportunity to implement a number of road design improvements:

- Reducing intersection corner radii
- Removing right turn channels
- Updating traffic signal timing
- Realigning intersections
- Shortening pedestrian crossing distances
- Adjusting vehicle lane widths and lane configuration



# WESTON ROAD & ST. PHILLIPS ROAD

Work planned for this intersection includes removing the right turn channel for southbound vehicles turning from Weston Road onto St. Phillips Road.

Removing the right-turn channel will

- Reduce the crossing distance and improve safety for pedestrians
- Slow right-turning vehicles
- Minimize conflicts between vehicles, pedestrians and cyclists

The area behind the new sidewalk will be incorporated into Mallaby Park.

The southbound TTC bus stop on St. Phillips and the southbound stop on Weston Road at Parke St. will be consolidated into a stop north of the intersection.





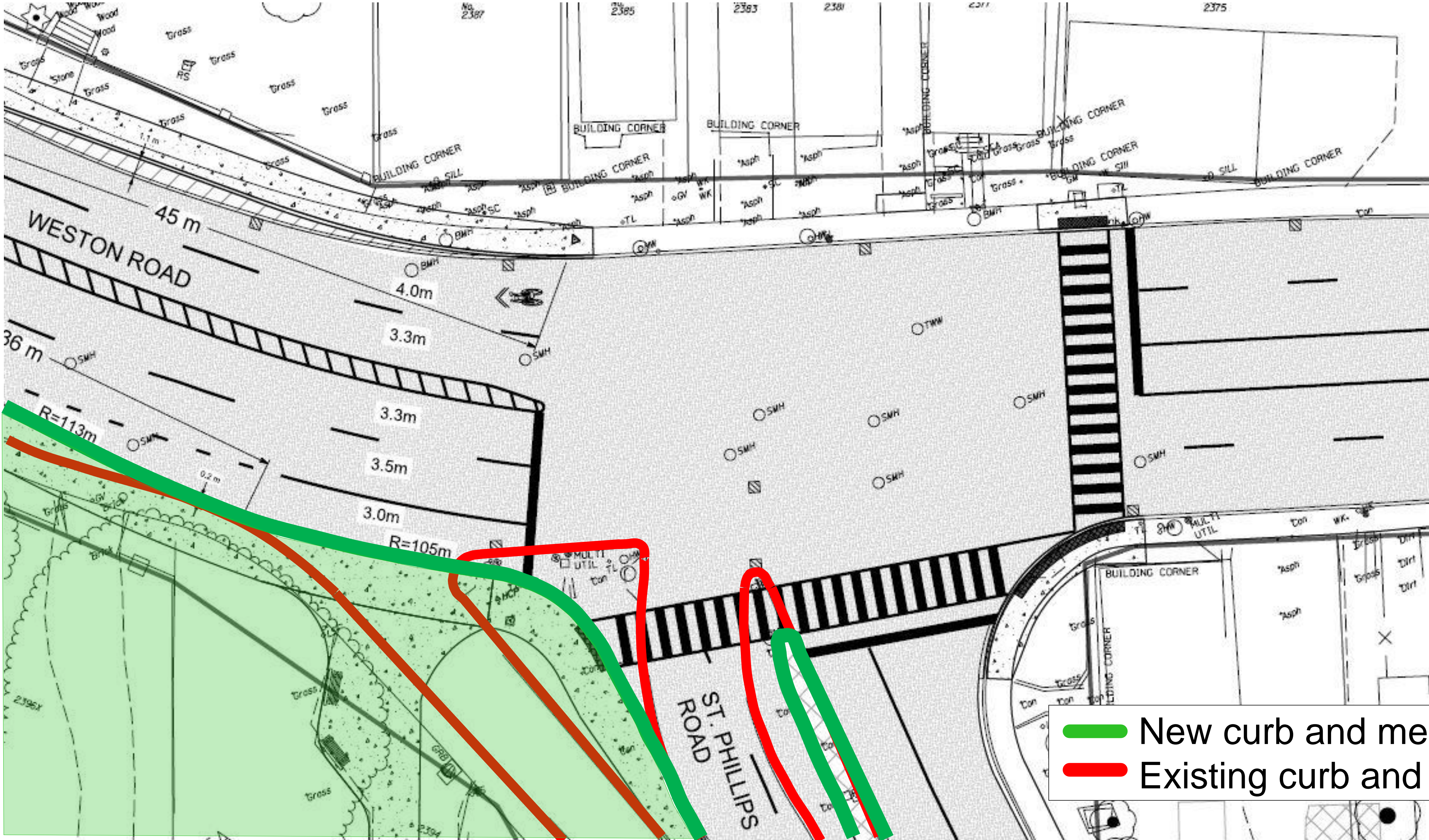
# RIGHT TURN CHANNEL REMOVAL



Before (left) and after (right) removal of right-turn channels at Dundas St. East and River St. (2016)



# WESTON ROAD & ST. PHILLIPS ROAD



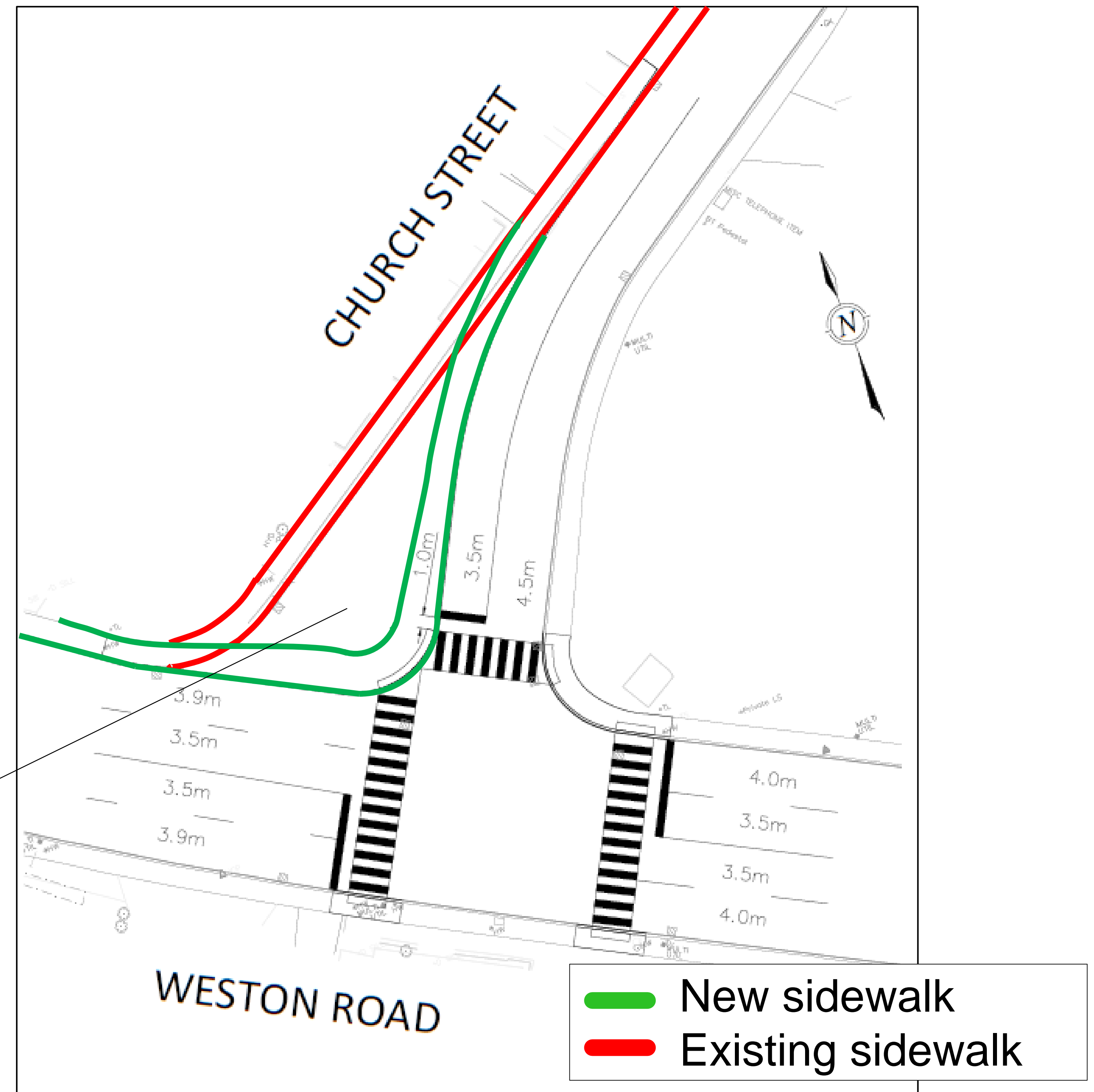


# CHURCH STREET & WESTON ROAD

Design changes at the intersection of Church Street and Weston Road will include:

- Narrowing Church Street and reducing the north corner radius
- Eliminating the existing stepped sidewalk on the north side of Church Street and widening the sidewalk
- Relocating the bus stop on Church Street closer to the intersection, for improved service
- Installing tactile plates and audible signals to improve accessibility

Streetscaping features on the northwest corner will include paving stones and a natural stone 'seat wall'.





# JOHN STREET & WESTON ROAD

The width of John Street at Weston Road will be narrowed from 10 metres to 7 metres, in coordination with the work by Rockport Development, and the left turn lane will be removed.

Improvements at the intersection will include

- Widening sidewalks on John Street to enhance pedestrian safety and comfort
- Reducing corner radii
- Installing tactile plates and audible signals for greater accessibility

The east-side and west-side TTC bus stops on Weston Road at John Street will be relocated.



John Street, looking north



# CORNER RADII REDUCTION

Corner radii are the angles of the curbs at an intersection.

Traditionally, curb radii have been designed to accommodate the turning movement of large vehicles.

Tightening (reducing) corner radii increases road safety by slowing vehicle turning speeds and creating shorter crossing distances for pedestrians.

Corner radii will be reduced at several intersections as part of the planned road work.



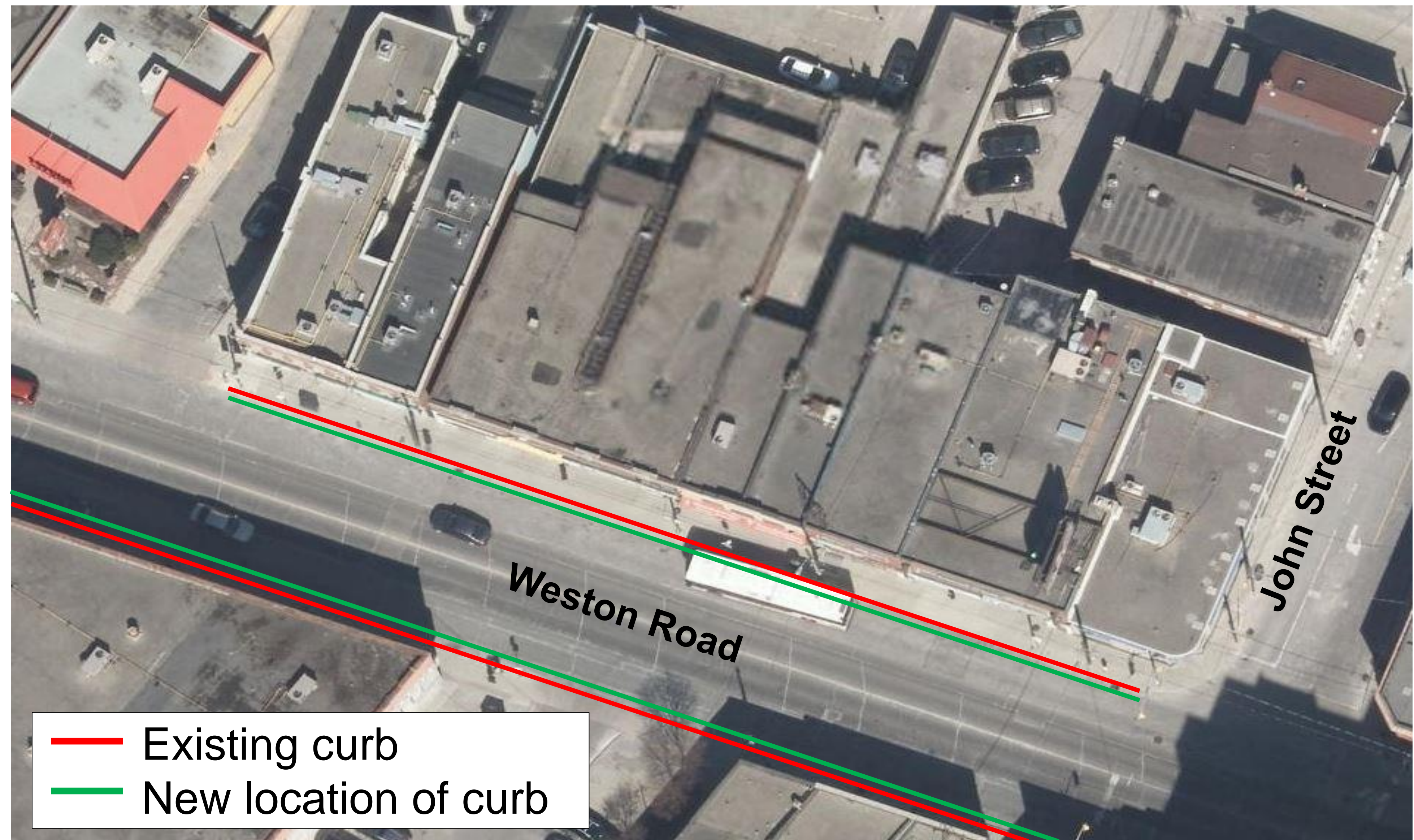
Example of curb radius reduction at Driftwood Avenue and Yorkwoods Gate



# LAWRENCE AVE. WEST TO LITTLE AVENUE

Improvements from Lawrence Avenue West to Little Avenue include:

- Widening sidewalks on both sides of the street by 0.6 metres
- Relocating utility poles to increase pedestrian space in front of stores
- Relocating bus stops to improve convenience and accessibility





# LAWRENCE AVE. WEST & WESTON ROAD

## Streetscaping at northwest corner:

- Two concrete planters with curbs and seatwalls
- Existing paving stones will be replaced with permeable paver stones for improved stormwater management
- Clock tower support will be adjusted to provide a wider entranceway
- BIA benches will be relocated
- Two new trees will be added

## Streetscaping at northeast corner:

- Concrete planter with seatwalls
- Green Infrastructure for stormwater management with two new trees

Bus stops at the southeast and southwest corners of Lawrence Ave. and Weston Road will be relocated north of Lawrence for improved accessibility.





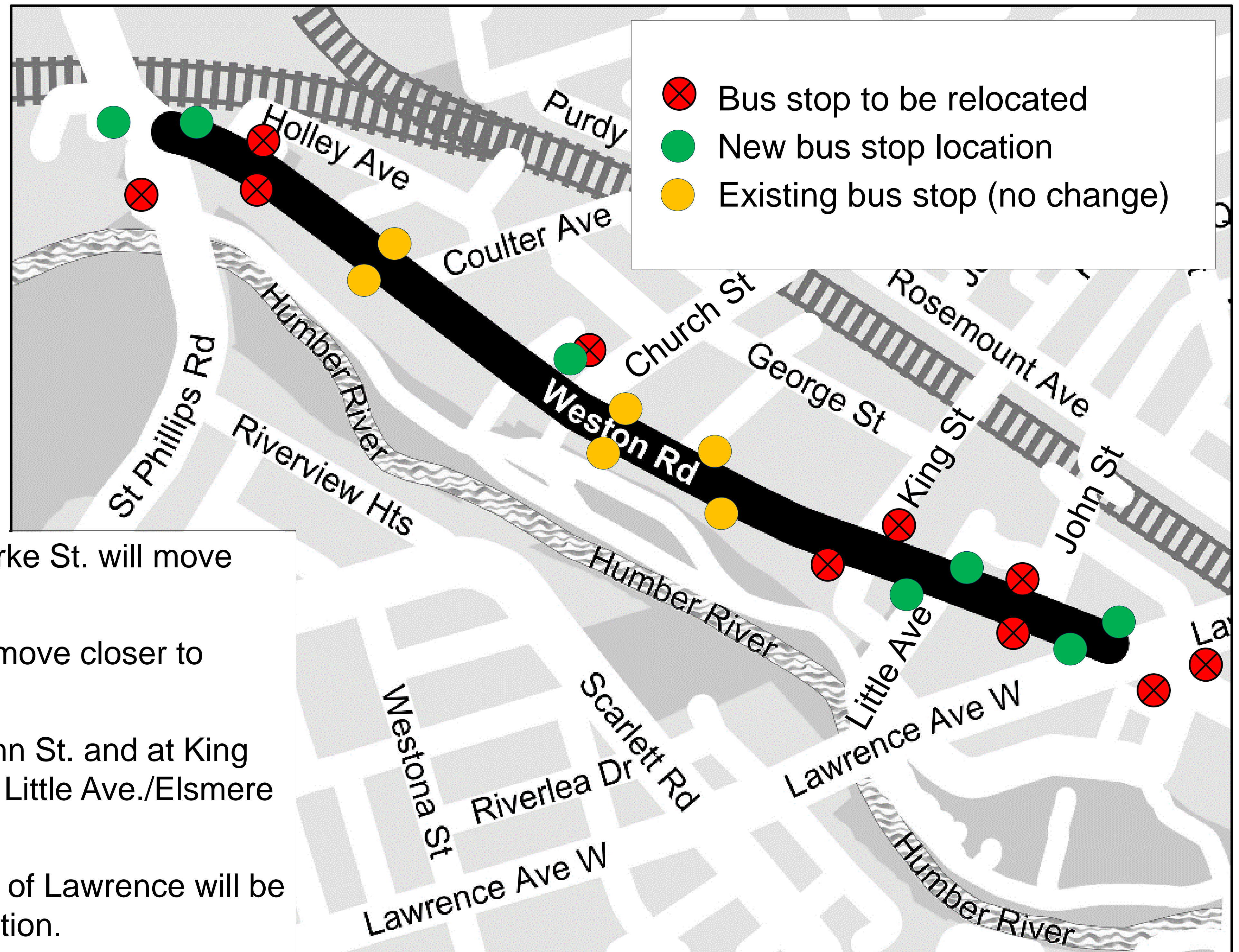
# CHANGES TO TTC BUS STOP LOCATIONS

The location of some TTC bus stops will change after construction is completed in order to

- ✓ Provide larger areas for people waiting
- ✓ Improve the safety and accessibility of bus stops

Several on-street parking spaces on Weston Road will be relocated to accommodate the new stop locations.

- Northbound and southbound stops at Parke St. will move further north.
- Stop on the north side of Church St. will move closer to Weston Road
- Northbound and southbound stops at John St. and at King St. will be consolidated into new stops at Little Ave./Elsmere Ave.
- Northbound and southbound stops south of Lawrence will be relocated to the north side of the intersection.





# JANE STREET & TRETHEWEY DRIVE

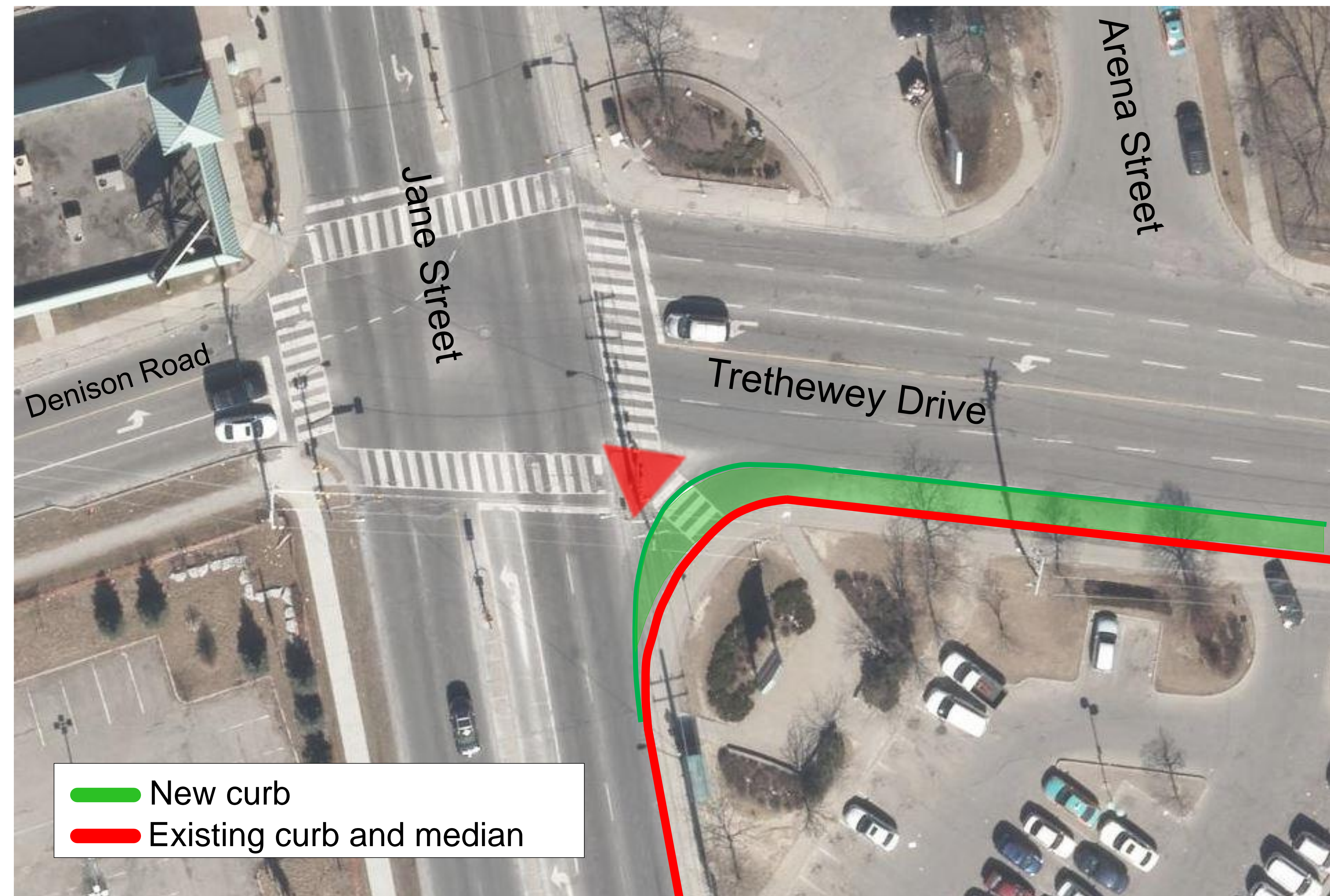
The work planned at this intersection involves removing the right turn channel at the southeast corner.

Benefits of this change:

- Improves pedestrian safety
- Reduces crossing distance for people walking
- Minimizes conflict between turning vehicles and pedestrians

Planned timing of work:

- Relocation of hydro poles in Phase 1 (2020)
- Reconstruction of the curb and sidewalk in Phase 2 (2021)





# PROPOSED CONSTRUCTION SCHEDULE

Phase/Timing*	What work is happening and where
<p>*Timelines subject to change</p> <p><b>Phase 1</b> May 2020 to December 2020</p>	<p><b>Lawrence Ave. West to Little Avenue:</b></p> <ul style="list-style-type: none"> <li>• Sewer replacement, sidewalk widening, utility pole relocation, road reconstruction</li> <li>• Weston/Lawrence intersection reconstruction (weekend work anticipated)</li> </ul> <p><b>Parke Street to Humberview Crescent:</b></p> <ul style="list-style-type: none"> <li>• Sewer replacement, road reconstruction</li> <li>• Weston/St. Phillips intersection improvements</li> </ul> <p><b>Church Street to 80m north of Rectory Road:</b></p> <ul style="list-style-type: none"> <li>• Sewer replacement</li> <li>• Intersection improvements at Church St. and Weston Road</li> <li>• Sidewalk replacement and road reconstruction on Church St.</li> </ul>
<p><b>Winter Shut Down</b> December 2020 to April 2021. All four lanes of traffic reinstated.</p>	
<p><b>Phase 2</b> April 2021 to December 2021</p>	<p><b>Little Avenue to Parke Street:</b></p> <ul style="list-style-type: none"> <li>• Sidewalk repairs/replacement</li> <li>• Road resurfacing</li> <li>• Road reconstruction from Church St to 80 north of Rectory Road</li> </ul> <p><b>Lawrence Ave. West to Humberview Crescent:</b></p> <ul style="list-style-type: none"> <li>• Top asphalt, road line markings</li> <li>• Restoration of areas affected by construction activities</li> </ul>



# WHAT TO EXPECT DURING CONSTRUCTION

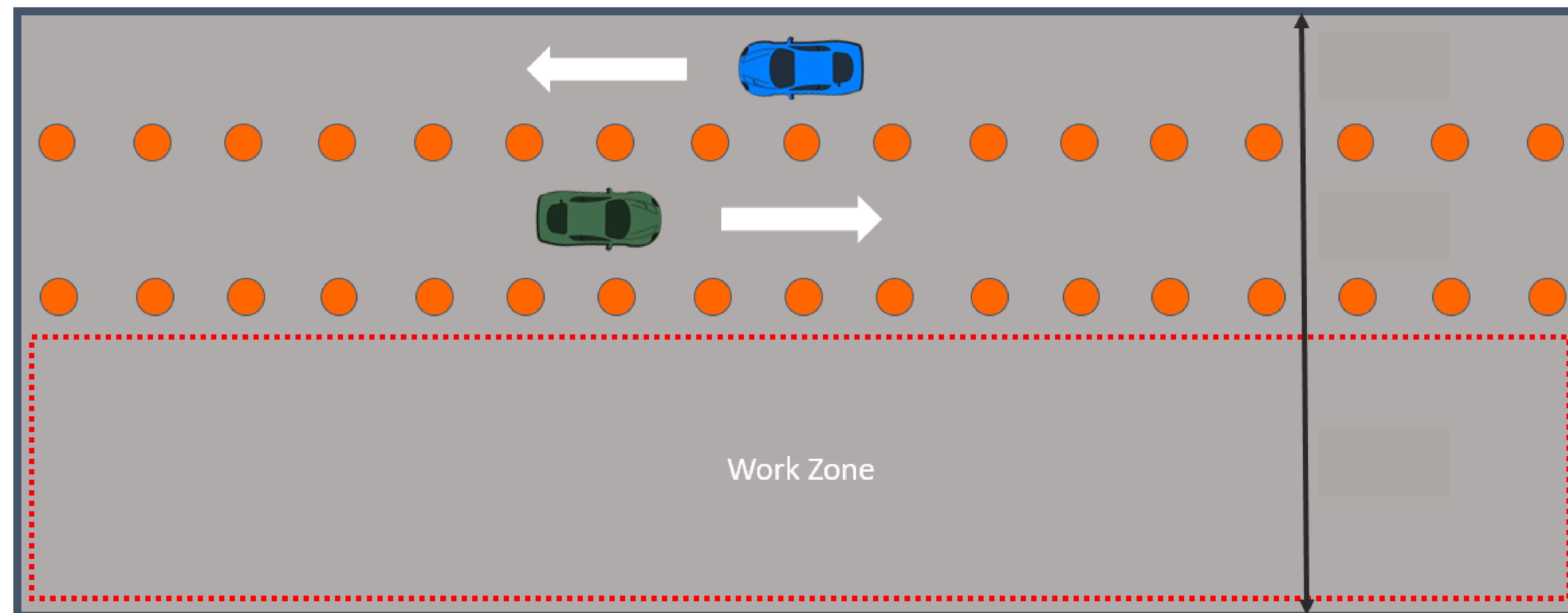
- **Work hours:** 7 a.m. to 7 p.m.
- **Some weekend work** is expected. Residents and businesses will be notified in advance.
- **Night work** may be necessary during the replacement of substandard water services due to water shut-offs . The City will communicate with impacted businesses prior to work commencing, to determine their requirements.
- **Access to businesses and residential properties** will be maintained throughout construction.
- **TTC bus service and Wheel Trans service** will be maintained at all times.
- **Garbage pick-up and snow removal** will continue as normal.
- **Site sweeping** to reduce dust will be carried out by the contractor.
- **Updates and information** about construction will be provided on the project website and through e-mail. Construction Update notices will be mailed to residents at key points in the project.





# CONSTRUCTION STAGING

- **One lane of traffic in each direction** will be maintained at all times.
- **Pedestrian access** will be maintained on both sides of the street at all times.
- **Street parking** on Weston Road will be temporarily impacted. The contractor will use small work zones to maximize the available parking. Wherever possible, effort will be made to provide parking spaces in front of businesses within the active work zone.
- **Multiple work zones** will be active in the construction area, in order to will allow several crews to work concurrently, reducing the overall duration of the project.





# NEXT STEPS

## **Pre-condition Inspection:**

- Third party inspection of properties close to the road work to document property conditions prior to construction
- Voluntary but recommended
- Results may be useful to substantiate claims for damage caused by construction.

## **Accessibility During Construction:**

- Individuals with accessibility needs should contact the Public Consultation Unit to discuss accommodations needed during construction.

## **Construction Notice:**

- A notice will be mailed to properties in and around the project area two weeks before construction with updated information about the project.
- Updates will also be provided on the project website and through the project e-mail list.

## **Objects in the Right-of-Way:**

- Landscaping features, fencing, or other physical objects at the front of your property located in the City's Right-of-Way, may need to be removed before construction to avoid damage.



# STAY INFORMED

---

## CONTACT

**Stephanie Gris Bringas**

**Sr. Consultation Coordinator**

**Public Consultation Unit**

**Stephanie.GrisBringas@toronto.ca**

**416-392-3643**

**Visit [toronto.ca/westonroad](https://toronto.ca/westonroad) for project updates  
or sign up for e-mail updates**