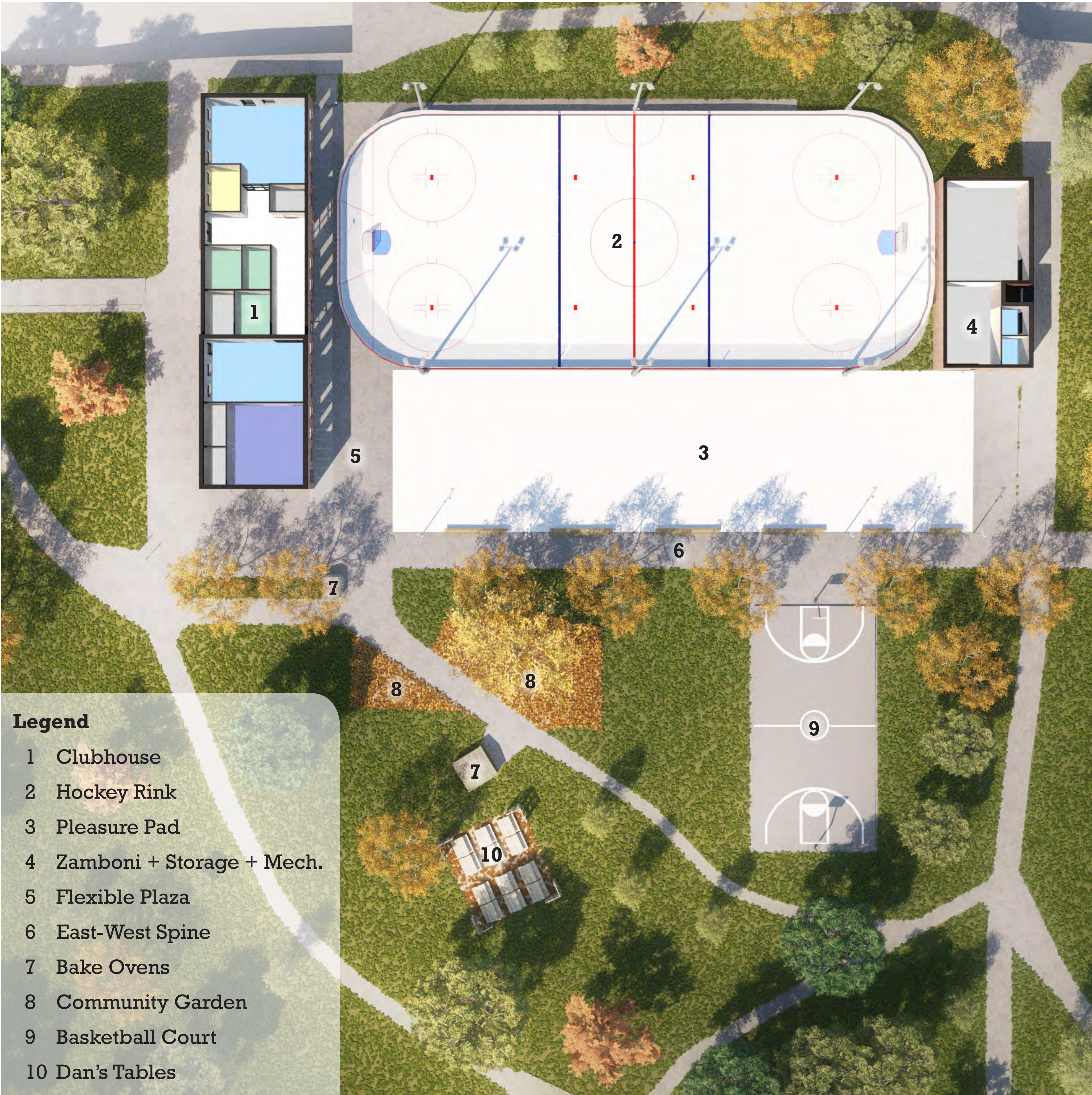


Option 2

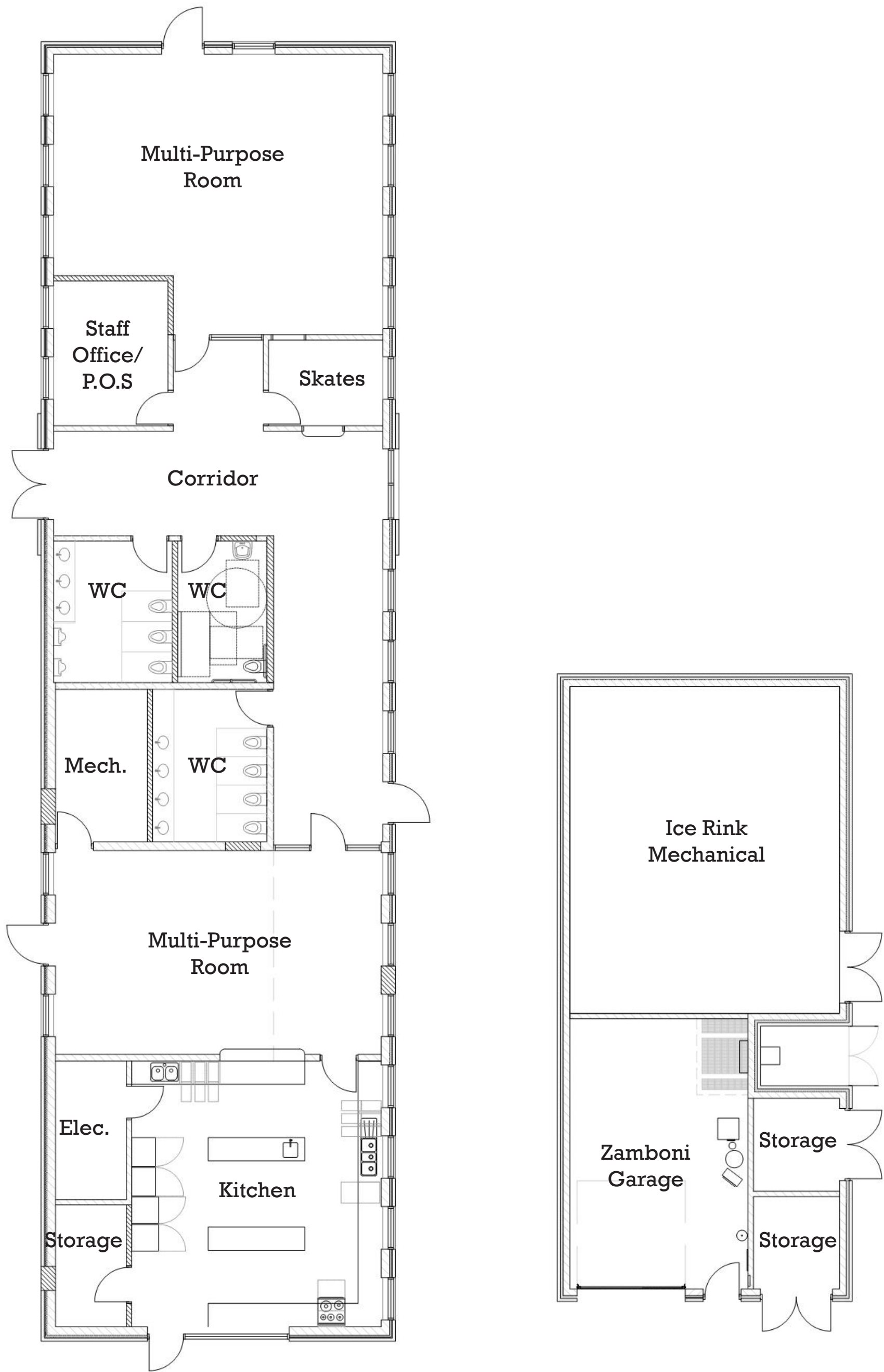
Renovated Clubhouse, relocated Rink Mechanical infrastructure, and upgraded landscape: two multi-purpose rooms + enlarged outdoor gathering spaces



Option 2 Site Plan



Option 2 Bird's Eye view from south looking northeast



Option 2 Clubhouse Plan

Option 2 Rink Building Plan



Option 2 view looking east



Option 2 view looking north



Option 2 view looking northwest

Option 3

Renovated Clubhouse + addition for Rink Mechanical: two multi-purpose rooms facing Public Plaza, reconfigured rinks + basketball court, expanded gardens



Option 3 Site Plan



Option 3 Bird's Eye view from south looking northeast



Option 3 Clubhouse + Rink Mechanical Addition Plan



Option 3 view looking east



Option 3 view looking north (canopy possible in all options)



Option 3 view looking northwest