

Dufferin Grove Park North-west Corner and Clubhouse Improvements



Project Scope

The City of Toronto has identified an opportunity to improve the north-west corner of Dufferin Grove Park where the Clubhouse, ice rinks, zamboni garage, community garden and bake ovens are located. We would like to work with the community to identify a shared vision for the north-west corner of the park that retains and respects existing programs, while providing new opportunities for programs and community gathering.

Dufferin Grove Park is a unique green space that has flourished into a central community hub for the neighbourhood.

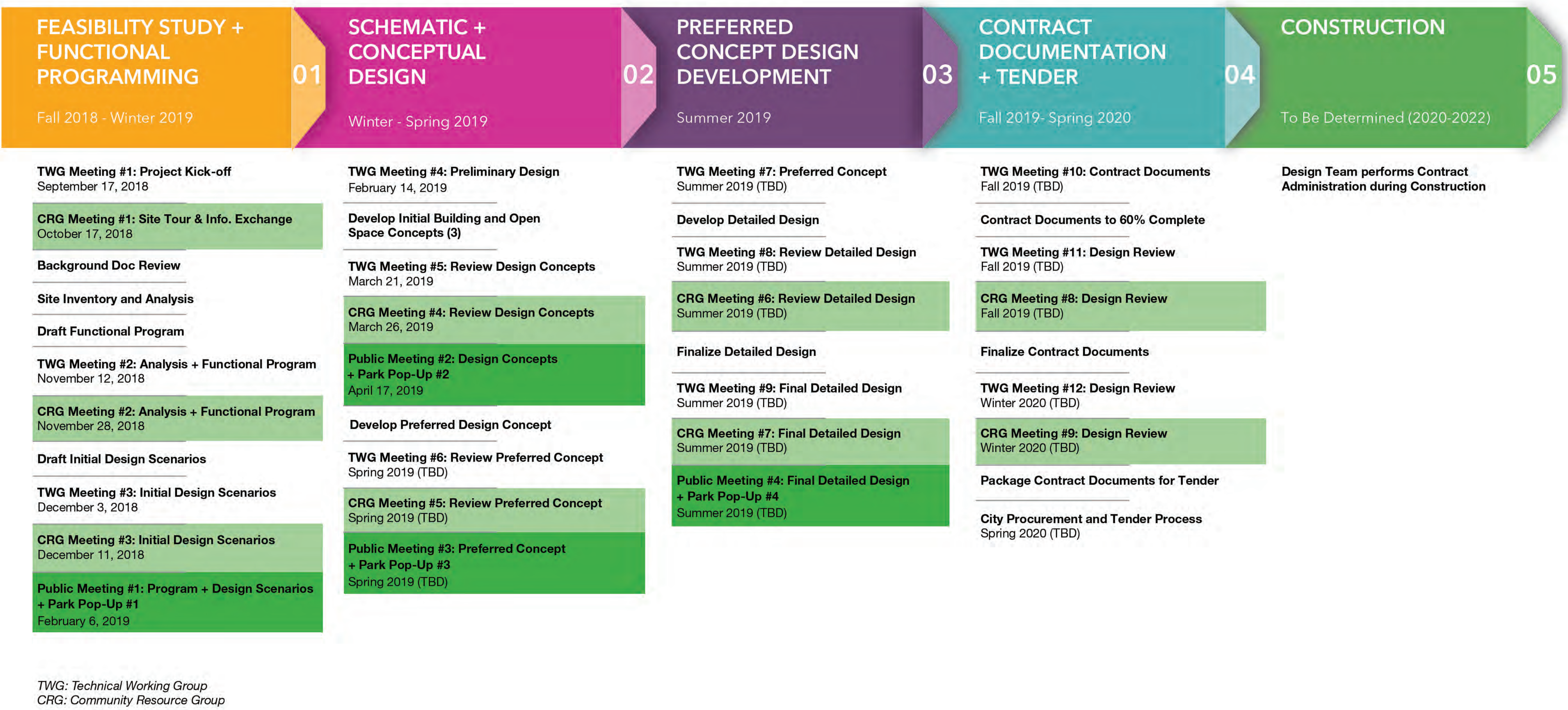
Why Now?

Numerous important building systems within the Clubhouse have reached the end of their life and need to be replaced. The refrigeration equipment and refrigerated concrete slabs at Dufferin Grove Park are also at the end of their life and must be replaced.

The City’s goal is to minimize the interruption of programs and rink use as a result of construction projects. The coordinated design and construction of renewed facilities now, as contemplated in the North-west Corner and Clubhouse Improvements project, is intended to avoid future system failures and protracted periods of closure, while creating facilities that better support community programming needs now and in the future.

Project Schedule and Consultation Opportunities

Project Schedule



Your Input

The feedback collected and heard will be used to guide City staff and their consultant team as they explore the feasibility of potential improvements to the north-west corner of the park and clubhouse.

We welcome your feedback.

For more information, to view materials or provide your comments, visit: <https://dufferingrove-northwestrevitalization.ca/>

Or, contact:

Lura Consulting
Liz McHardy
Community Engagement Facilitator
Phone: 416-536-6174
Email: lmchardy@lura.ca

City of Toronto
Katy Aminian
Senior Project Coordinator
Toronto Parks, Forestry and Recreation
Email: Katy.Aminian@toronto.ca

Historical Context

Originally dedicated in 1913, Dufferin Grove Park has evolved alongside the growth and development of the surrounding community to take on many functions

Site Evolution

1894



1913



1960



2018



 N

 Current Dufferin Grove Park

 Dufferin Grove Park

 Clubhouse

 Private Open Space

 Public Open Space

 Buildings

1894: By the 1890s the City of Toronto had begun developing at the outer boundaries of the original city. The subdivision of the former Denison lands into residential lots created the beginnings of the Dufferin Grove neighbourhood. The Dufferin Race Track represented the only planned open space in the area.

1913: Dufferin Grove experiences rapid growth and the need for a dedicated public open space is identified. Two parcels straddling Gladstone Avenue are dedicated and a fieldhouse is constructed on the eastern parcel. The park is characterized by the remnant ravine landscape of Denison Creek at the south and a mature treed grove throughout. Gladstone Avenue remains a functioning roadway.

1960: The rinkhouse and first permanent skating rinks are constructed in Dufferin Grove Park in 1955. Across Dufferin Street, Dufferin Mall opens on the former race track lands. The final remaining vacant lots are infilled and a vibrant community solidifies around the park. At the corner of Bloor and Dufferin, Kent Public School expands and Bloor Collegiate Institute opens its doors.

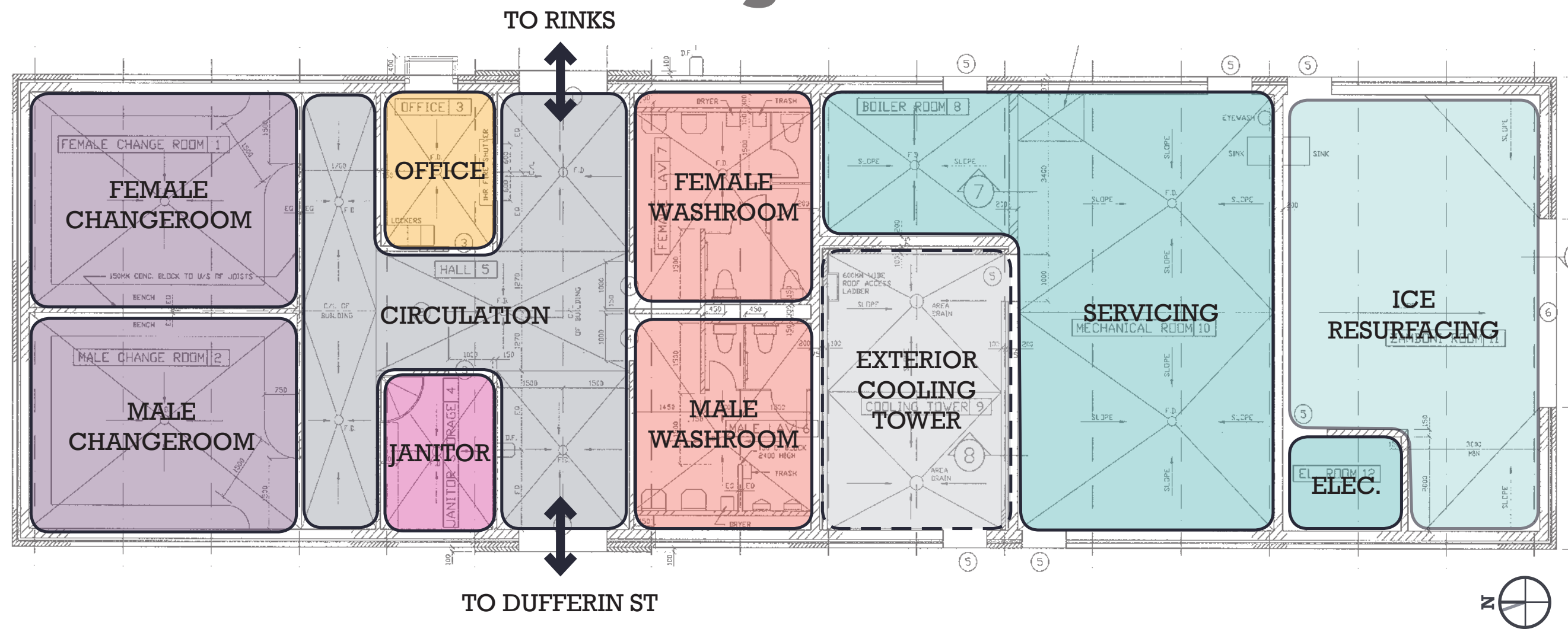
2018: Programming within Dufferin Grove Park has expanded including the replacement of the original rinkhouse in the same location in 1993 and sports fields and courts have developed at the north end of the park. At the south, the children's play area evolved to include the adventure playground and the Cob Kitchen. At the north, two outdoor bake ovens and the year-round farmers' market highlight the community's commitment to healthy food programming.

Building Evolution

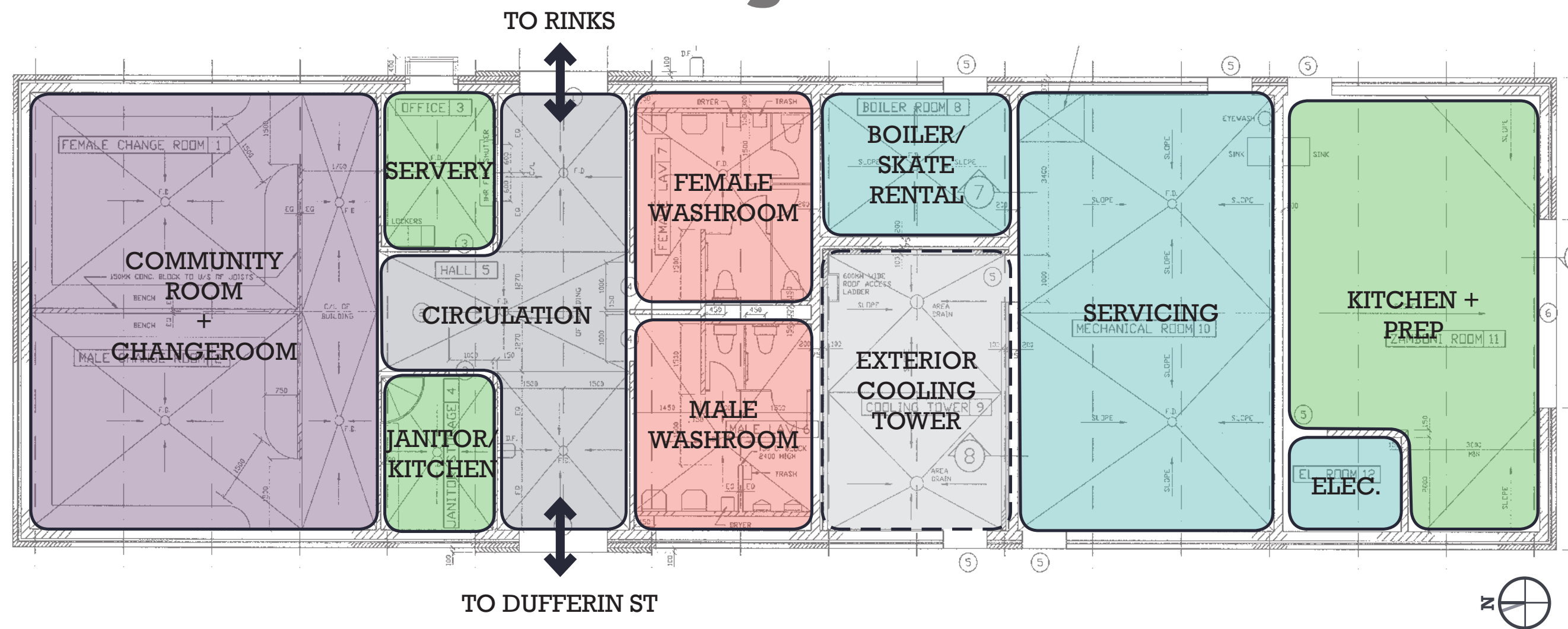
The current clubhouse building was originally designed as a utility building with gender-specific change rooms, and washrooms at the north end of the building and utilities supporting ice-making and resurfacing equipment at the south end. Utility equipment at the ground level and on the roof were screened from public view and access. Over time the uses within the building have evolved to accommodate more public programming, displacing some of the original utility functions to out buildings at the east side of the rinks.



1993 Clubhouse Program



2019 Clubhouse Program



Existing Conditions

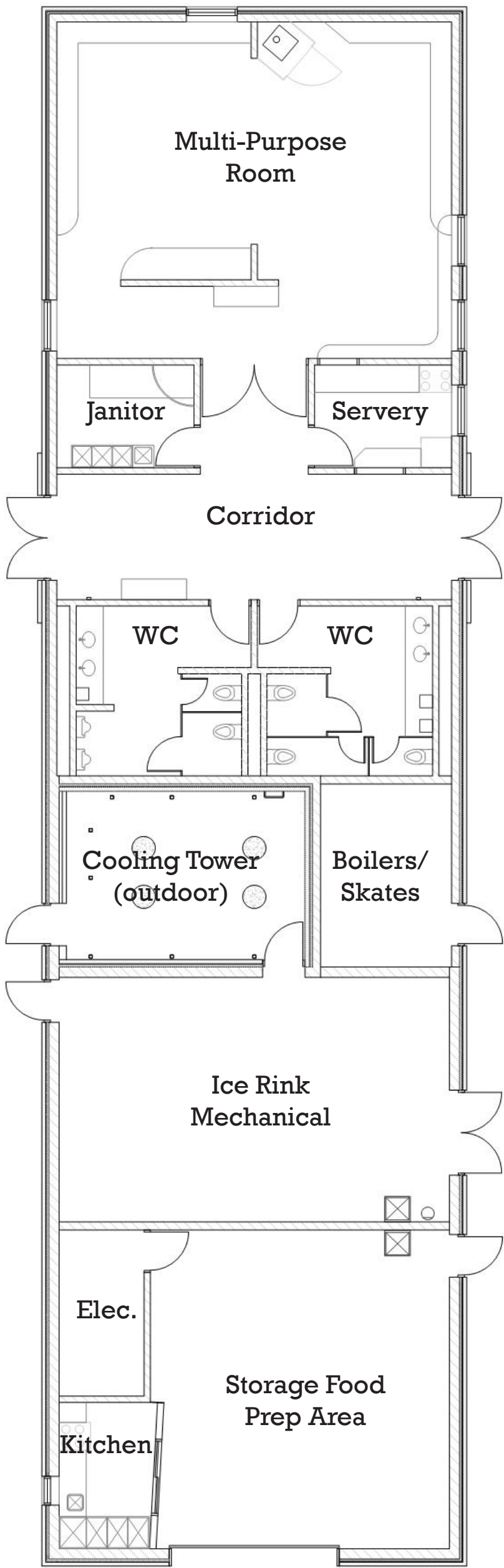
Existing Clubhouse and surrounding landscape including rink slabs, pathways, storage sheds, Zamboni shed, basketball court, seating areas and gardens



Existing Site Plan with Survey Plan underlaid



Existing Bird's Eye view from south looking northeast



Existing Clubhouse Plan



Existing view looking east



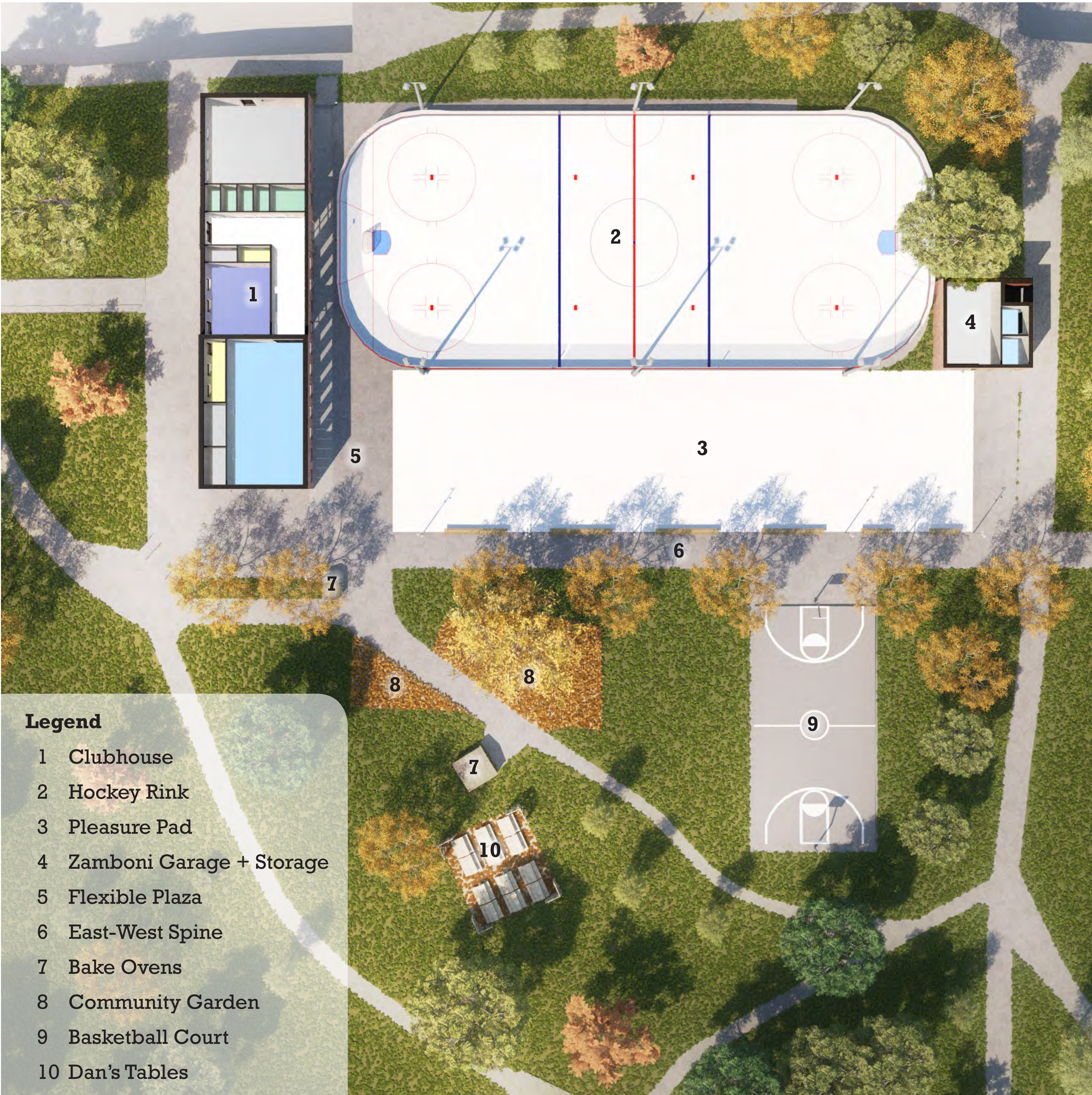
Existing view looking north



Existing view looking northwest

Option 1

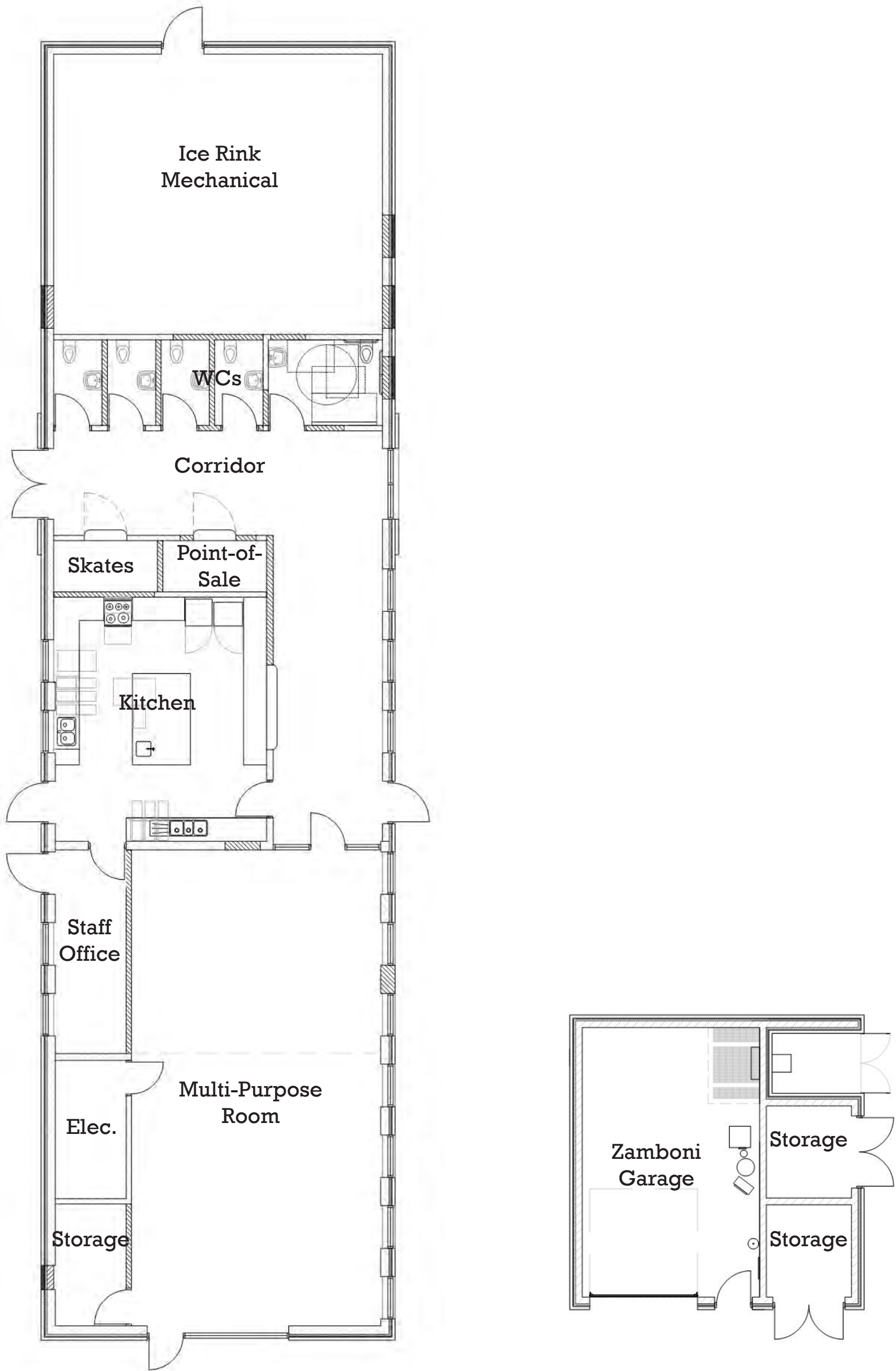
Renovated Clubhouse and upgraded landscape: multi- purpose room facing Pleasure Pad, Rink Mechanical at north end, and enlarged outdoor gathering spaces



Option 1 Site Plan



Option 1 Bird's Eye view from south looking northeast



Option 1 Clubhouse Plan Option 1 Zamboni Garage Plan



Option 1 view looking east



Option 1 view looking north



Option 1 view looking northwest