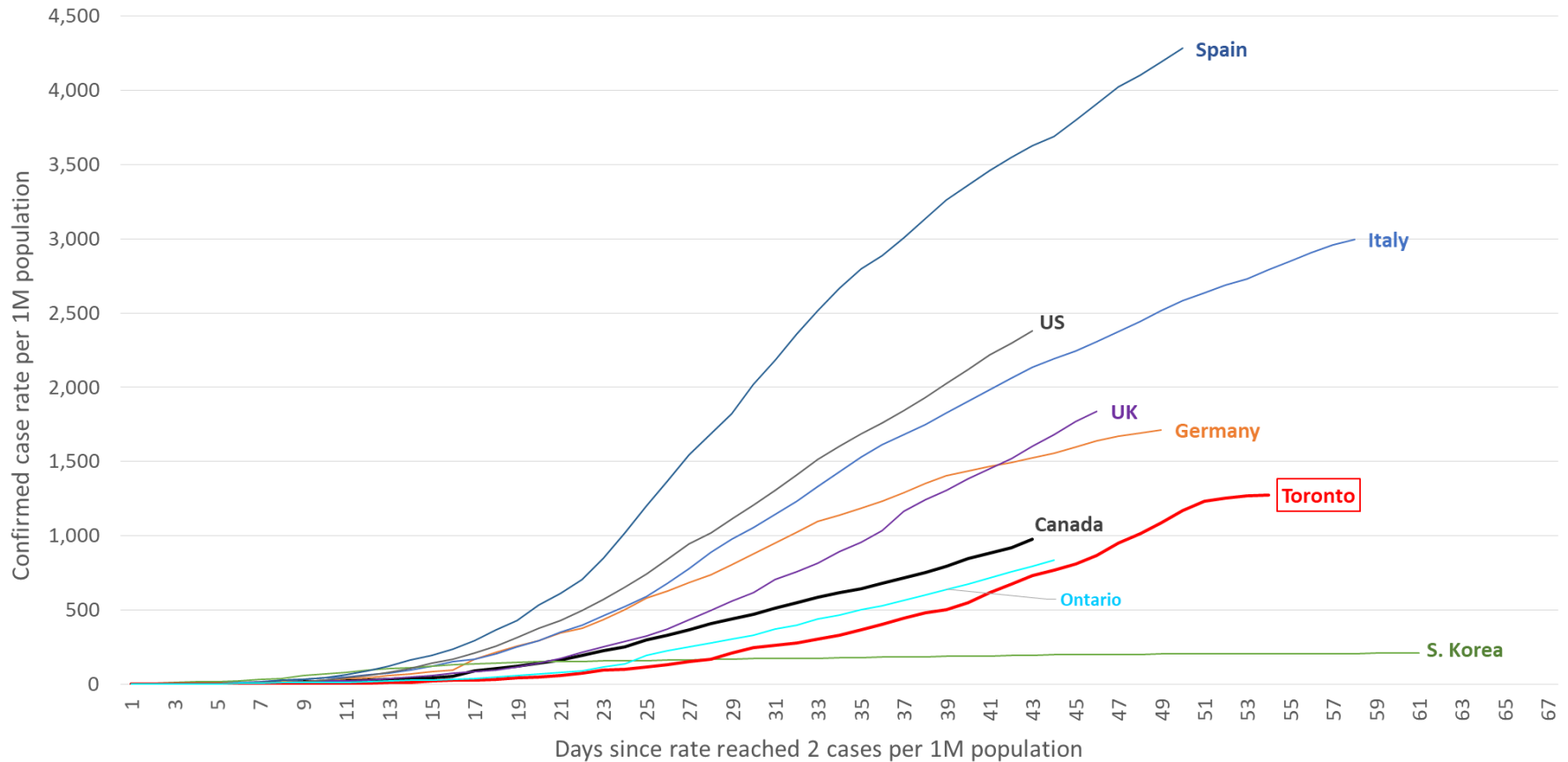


# Cumulative Rates of COVID-19 per Million Population, Toronto Compared to Select Countries/Regions. April 21, 2020.



Data sources are preliminary and subject to change:

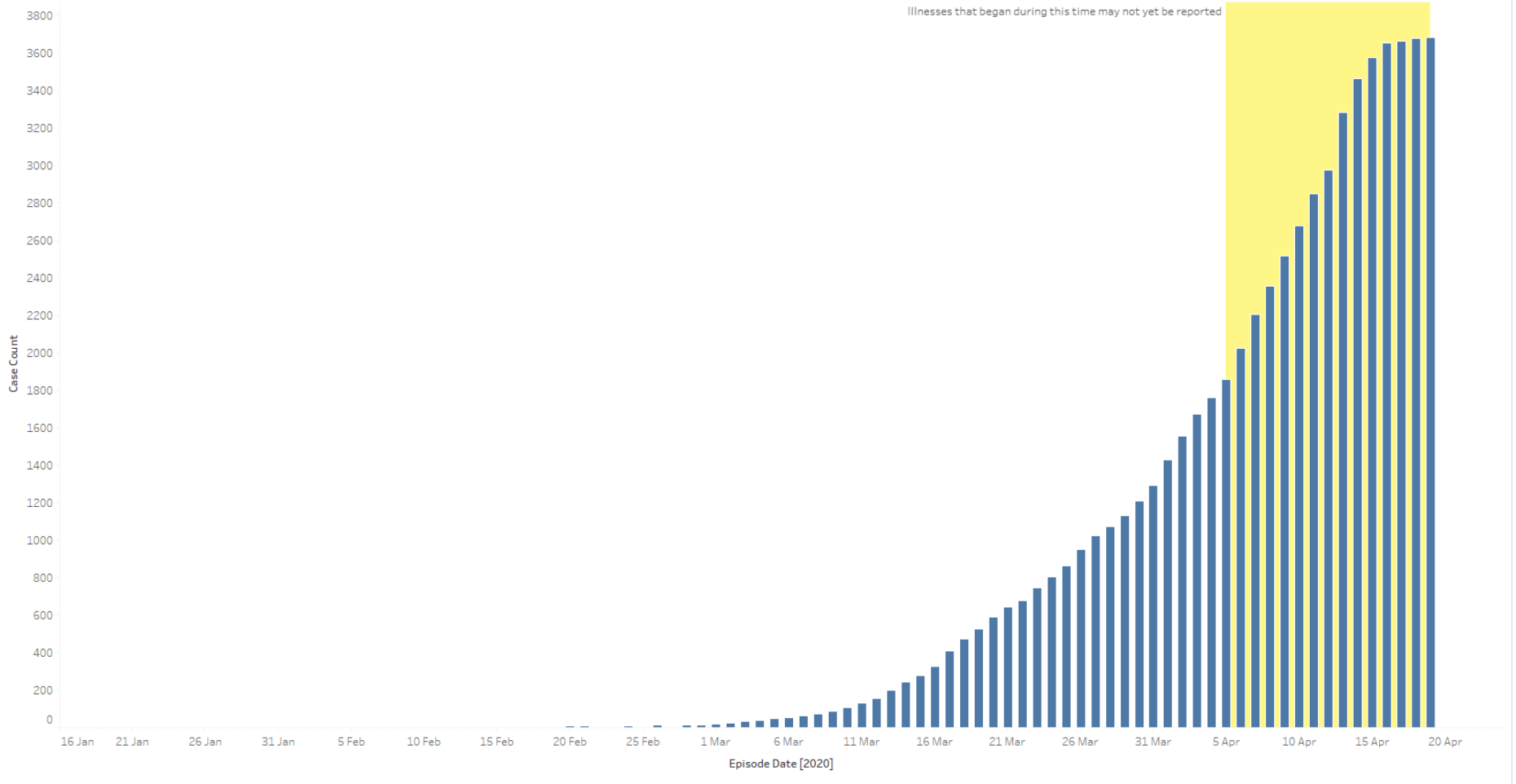
Toronto: Integrated Public Health Information System (IPHIS) and Coronavirus Rapid Entry System (CORES) as of April 21, 2020 @ 8:30 am

Ontario: COVID\_19 Canada Open Data Working Group <https://github.com/ishaberry/Covid19Canada>, data as of April 21, 2020 @ 8:30 am

Global: Max Roser, Hannah Ritchie and Esteban Ortiz-Ospina (2020) - "Coronavirus Disease (COVID-19) – Statistics and Research". Published online at OurWorldInData.org. Retrieved from: '<https://ourworldindata.org/coronavirus>' [Online Resource] on April 21, 2020 at 9:00 am

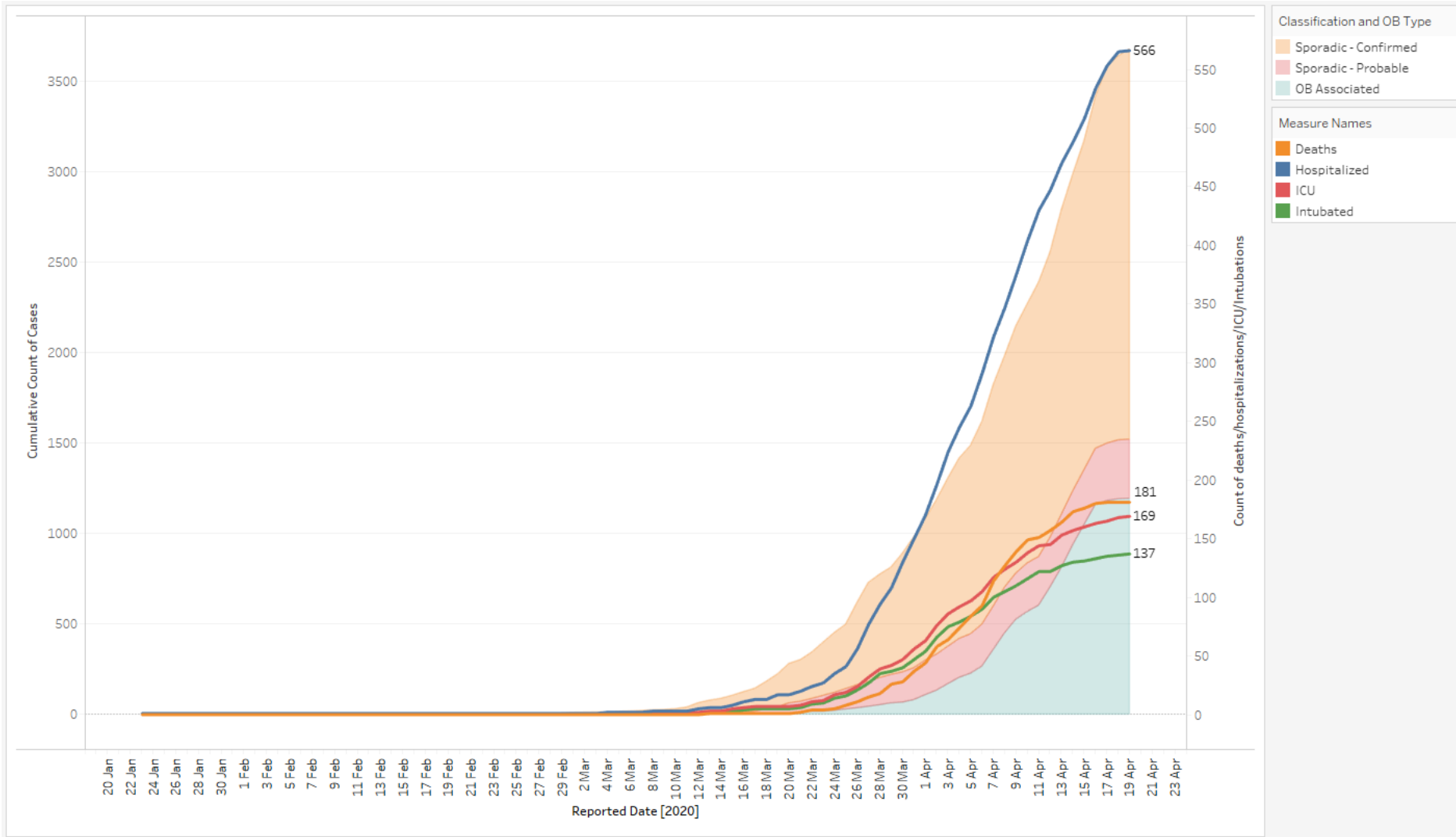
# Cumulative Cases of COVID-19 by Episode Date, Toronto

Cumulative Cases by Episode Date



Data sources are preliminary and subject to change:  
 Toronto: Integrated Public Health Information System (IPHIS) and Coronavirus Rapid Entry System (CORES) as of April 20, 2020 @ 12:30 pm

# Cumulative Number of COVID-19 Cases, Hospitalizations, Intensive Care Unit (ICU) Admissions, and Deaths, Toronto



Data sources are preliminary and subject to change:

Toronto: Integrated Public Health Information System (IPHIS) and Coronavirus Rapid Entry System (CORES) as of April 20, 2020 @ 12:30 pm

# Summary of COVID-19 Cases in Toronto

## April 21, 2020

### SUMMARY OF COVID-19 CASES IN TORONTO



<b>Total Reported Cases*</b>	<b>3,820</b>
Currently in hospital	281
Currently in ICU	109
Total deaths	190

AS OF APRIL 21, 2020



<b>Proportion in the Community</b>	<b>67%</b>
Median age (years)	48
% Female <sup>+</sup>	50
% Male <sup>+</sup>	49
Total deaths	59
Median age at death (years)	79



<b>Proportion in the Institutions**</b>	<b>33%</b>
Median age (years)	84
% Female <sup>+</sup>	60
% Male <sup>+</sup>	36
Total deaths	131
Median age at death (years)	87

\*includes confirmed & probable cases

\*\*institutions include long-term care homes, retirement homes, chronic care & hospitals

<sup>+</sup>Gender was unknown/other for some cases