



# **Rosehill Reservoir Rehabilitation**

## **A New Design for David A Balfour Park**

### **Public Consultation Summary**

**June 2020**

Prepared by: Kate Kusiak, Senior Public Consultation Coordinator  
City of Toronto, Public Consultation Unit



## Contents

1.0 Overview .....	3
2.0 Consultation Activities .....	4
2.1 Notification .....	4
2.2 Stakeholder Notification .....	4
2.3 Consultation Event .....	4
2.4 Feedback Form .....	4
3.0 Feedback Summary .....	5
3.1 General Park Comments .....	5
3.2 Nodes & Entrances .....	5
3.3 North Embankment .....	5
3.4 Water Feature & Molecule .....	6
3.5 Plateau .....	6
3.6 Benches .....	6
3.7 Trellises/Arbors .....	6
3.8 Pathways .....	7
3.9 Lighting .....	7
3.10 Accessibility & Safety .....	8
3.11 Heritage .....	8
3.12 Public Washroom .....	8
3.13 Rosehill Garden .....	8
3.14 Cycling through the Park .....	9
3.15 Other Comments .....	9
4.0 Project Team Considerations & Responses .....	9
5.0 Next Steps .....	11
5.1 Revisions to Park Design .....	11
5.2 Follow Up .....	11

While we aim to provide fully accessible content, there is no text alternative available for some of the content on this site. If you require alternate formats or need assistance understanding our maps, drawings, or any other content, please contact us at [rosehill@toronto.ca](mailto:rosehill@toronto.ca) or call 416-392-1932.

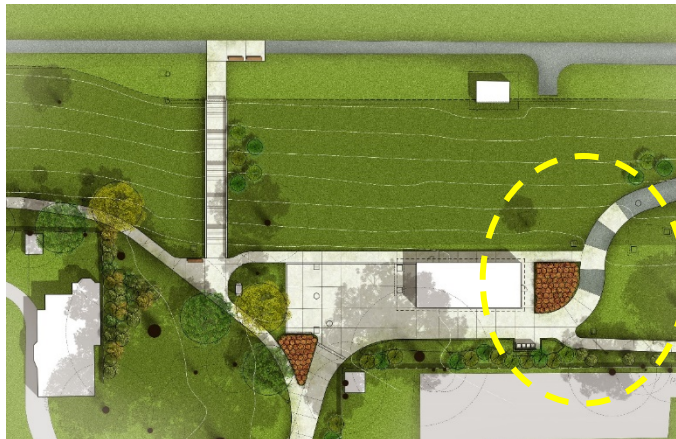
## 1.0 Overview

The City of Toronto is currently rehabilitating the Rosehill Reservoir and included in this work is a redesign of David A Balfour Park located on top of this facility. Leading up to and during this work, staff have been consulting with local councillors, residents and the Rosehill Vision Committee, a committee of community representatives established by current and former local councillors to advise the team on the location and form of park elements.

Building on a number of meetings, the Rosehill Vision Committee (RVC) with City project managers and consultants, a preliminary plan including many illustrations were provided to the public to receive feedback. This document summarizes all feedback received and includes comments as well as questions and suggestions for various park features from the broader community.

Based on public and stakeholder feedback, the following changes were made to the design for David A Balfour Park:

1. Five (5) new benches were added throughout the park, for a total of 53 new benches and 8 restored benches (total is 61 benches)
2. The trellis located at the south side of the park near the Valve House was removed
3. The eastern segment of the Upper Perimeter Pathway was widened from 2.1 metres to 3.0 metres
4. The pathway alignment on the east side of the Valve House was slightly widened and modified into an "S" curve to broaden the line of sight for park users



Above: The revised alignment of the path east of the Valve House into an "S" shape curve.



Left: The eastern segment of the Upper Perimeter Pathway widened to 3.0 metres

Right: The trellis located near the Valve House is removed.



## 2.0 Consultation Activities

### 2.1 Notification

The public meeting event was advertised to interested participants as follows:

- Notice distributed to about 7,000 nearby homes and businesses
- Project webpage
- Email issued to project contact list – about 300 individuals

Public notification took place the week of March 7, 2019 and included invitation for residents to attend a public meeting or view the presentation online and submit comments. The notice also indicated that for residents who were unable to attend the meeting, that the same presentation materials would be available online after the meeting.

See Appendix A for a copy of the notice.

### 2.2 Stakeholder Notification

In addition to public notification, a stakeholder meeting with representatives from CycleTO was provided to follow up on prior inquiries, present details on the park design and answer any questions.

### 2.3 Consultation Event

A public meeting was held on March 26, 2019 at Christ Church Deer Park located at 1570 Yonge Street from 6 p.m. with a presentation at 7 p.m. and closing at 9 p.m. The format of the meeting included a presentation followed by a period for attendees to ask questions. There was also additional time before and after the presentation to view display boards showing an overview of park plans and construction updates. Approximately 91 people signed in at this meeting.

Staff took notes and minute taker recorded the questions and answers from staff. See Appendix B for a copy of the minutes.

### 2.4 Feedback Form

A feedback form was provided at the public meeting for residents to submit their comments on the park design by April 5, 2019. The same three questions was also provided on the project webpage. The three questions included:

- What do you like about the park design for David A Balfour Park?
- What are your concerns or questions about the park design?
- Do you have any additional comments?

A number of comments were received and summarized in the following sections:

- 36 emails, comment forms submitted in-person at the meeting or mailed in
- 4 pages of staff notes recorded at the public meeting
- 29 questions and answers recorded at the public meeting

## 3.0 Feedback Summary

Overall residents appreciated the new design for the park. Some residents provided further details in the park design elements, such as requests for more benches and seating and concern about graffiti on buildings and structures.

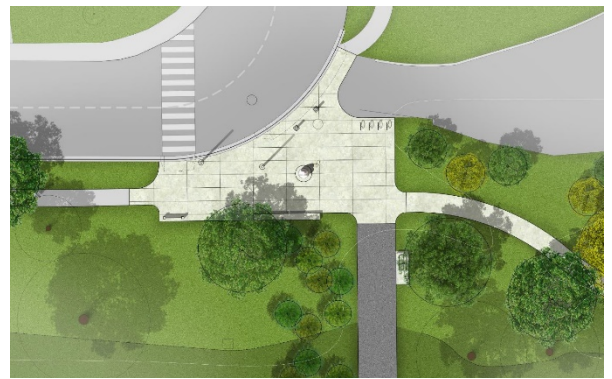
There was some concerns expressed about park users' safety – cyclists, children, strollers, mobility aids, and the elderly.

### 3.1 General Park Comments

1. Will be a jewel for our neighbourhood
2. Wholeheartedly in favour of design
3. Pleased with the design decisions so far
4. Encouraged by quality of materials
5. It will be attractive
6. Designs are really lovely
7. Plan looks fabulous
8. Design is clean and efficient
9. Simplicity of overall design
10. Real progress has been made
11. Make this more of a gathering space, give the park a special identity or character
12. Overall look is cold and sterile
13. Interesting use of space, many design elements to make it more of a destination that people will view and use as a park, rather than a large vacant space
14. Landscaping does not encourage play (ie. interaction of NYC high line)
15. Design is not resilient
16. Design does not reflect increase in residents/density/changing neighbourhood

### 3.2 Nodes & Entrances

1. Concern for the excavation around the large tree at Rosehill
2. Less concrete, more green
3. Move bike racks at Rosehill entrance further south and replace with ornamental trees
4. One bench at Jackes entrance



Node at Avoca Avenue

### 3.3 North Embankment

1. Concern for hard, smooth material that will invite graffiti and make it hard to grow trees
2. General disagreement for main entrance location or style as few people will use it
3. There is no need for the grand stairs or use of the second ramp to the east of the stairs.
4. Suggestions for plantings including: Lespedezas, Buddleias, Caryopteris, Spireas. Garden Volunteer sketch. Tall Zebra Grass, Dogwood Winter Beauty, Buddleia Royal Red, Caryopteris Dark Knight, Spirea Fritschinia and conifers

### 3.4 Water Feature & Molecule

1. Glad a little water feature is back, its soothing to hear water cascading
2. The design of the water feature is clean and simple
3. Like the way the water molecule is showcased, it is attractive and eye catching, nicely showcased; signals the relationship of the park to its history and dual function
4. Position of water molecule is great
5. Suggest east-west channel from the monument to Rosehill node/under the ramp
6. Enlarge the water feature, a larger pond with seating and tree plantings on west and south sides.
7. Concerns regarding dog hair entering the drains
8. Change the top of the retaining wall from flat to pointy



Centennial Monument and Water Feature on Rosehill Avenue

### 3.5 Plateau

Many of the comments received were concerned with the use of the green and open space on the plateau. Most comments understood the rationale for the open space and removal of the shallow pools. In general, concerns were related to how the open, green space will be used or managed to retain the same characteristics and atmosphere that neighbours are accustomed to enjoying.

1. Approve of the wide open grassy field, but it will have to be maintained properly/weeded
2. I like the flat plateau
3. Potential conflict of people playing sports with those who want to cross the park
4. No shelter from the sun
5. Suggest benches in centre for people playing sports etc., to have a place to sit or keep their belongings.
6. Add shrubs and tall grasses on sketch.

### 3.6 Benches

1. I like the benches
2. Suggest two grouping of benches instead of east-west-south
3. Appreciate the greater seating options around the park and their look
4. Not everyone wants to sit in a group; suggest solitary benches
5. Add benches that are friendly to seniors on lower pathway
6. Benches near walkways: bench at Jackes is too close to the path that someone sitting there will need to move their legs
7. We need more benches
8. South west corner is great to sit/afternoon shade – install a circular group of benches
9. Benches without the trellis for those who like to sit in the sun
10. A more attractive way to locate benches other than in rows, such as in natural settings

### 3.7 Trellises/Arbors

1. Remove east trellis as it mars the view of the ravine

2. I like the trellis provides shade on the seating/perimeter
3. Delete the south trellis but keep seating, increase size of remaining two trellis
4. Locate the two trellis on outside edge of the upper perimeter path (not straddling it)

### 3.8 Pathways

#### *Upper Perimeter Pathway Comments*

1. I like the paths on the plateau are available
2. No alternating treatments – all should be in concrete
3. Better separation of benches from the upper track, so they are not in the way of runners (All pathways with benches)
4. Add signage that this is a "pedestrian priority"

#### *Service Road Comments*

1. This path will become a skating rink in the winter

#### *Lower Perimeter Path Comments*

1. Better define the varying landscape experiences, canopies, ground cover
2. Path to be continuous and unbroken passing through Valve House
3. Emphasis on tree canopy is inappropriate – only need a few trees, otherwise it will not be safe
4. Widen the path as it is difficult to navigate between baby strollers, walkers, pets



Left: Upper Perimeter Pathway and Service Road. Right: Lower Perimeter Pathway (red) and light poles (blue)

### 3.9 Lighting

1. All paths should be lit with simple bollards at dusk and night time



### 3.10 Accessibility & Safety

The Canadian Institute for the Blind (CNIB) provided a short list of resources and included links for the following topics: accessible swing sets, accessible beach, accessible park benches, accessible playgrounds, tactile art, wind chimes/sound to navigate open or park spaces.

Staff reviewed the online article "The surprising ways city parks create barriers<sup>1</sup>" (Andrea Yu, Local Love) for accessible park benches and noted its comments on park access and seating.

1. At least one ground entryway, a route that minimizes the back and forth
2. Ability to sit next to a friend. Benches on concrete pedestals are sometimes raised, so it doesn't create an equitable experience. Location of benches in the middle of a grassy expanse can be difficult to navigate. Benches located next to a paved path.

### 3.11 Heritage

1. Old large valves will make wonderful art pieces and would be a striking and fascinating reminder of the importance of the reservoir to the city and its history.

### 3.12 Public Washroom

1. The extended trellis and concrete pad are too much, please remove
2. Likes the storage provision for the garden volunteers
3. Add benches on the cement pad to the west and south of the bathroom
4. Building has an open shelter which will invite homeless residents
5. Enhance the view of the ravine
6. Unhappy about the needless loss of trees
7. Building should be graffiti proof (as well as Valve House and Access House)

### 3.13 Rosehill Garden

1. The line of benches in the garden reduces the attractive view from the garden. If it remains as a covered team bench on the east side, it should be moved further north.



Service Road to the Washroom

---

<sup>1</sup> Link to article <https://locallove.ca/places/the-surprising-ways-city-parks-create-barriers/#.XPqwDYhKjIW>



### 3.14 Cycling through the Park

1. When was it decided that a cycling route go through the park?
2. Cyclists won't use the Service path as it doubles back, there are blind/sharp right turns, also near the Valve House
3. Speed of cyclists mix with many residents and vulnerable populations such as children, strollers/mobility devices, the elderly, in addition to people with dogs that are off-leash
4. Path is too narrow for both cyclists and pedestrians
5. Alternating treatment is insufficient to slow down cyclists; would like to see ripple surfaces, bollards, separate paths, a previous request for a sign to dismount
6. Lower perimeter path is too narrow, too close to playground

The following topics were received from CycleTO staff and representatives:

1. 2.5 – 3.0 metre width of Upper perimeter pathway
2. Smooth out the alignment at Avoca Access Node
3. High quality surface
4. Alignment and grade around the Valve House
5. Lighting
6. Bicycle Parking
7. Winter maintenance
8. Drainage concerns including altering the grade/slope and swale
9. Vegetation removed at blind spots
10. Wayfinding/Signage located within the park and on streets leading into/from the park
11. Stenciling the paths to indicate preferred or optimal navigation routes

### 3.15 Other Comments

The following items were raised by residents but are beyond the current scope of the park design process.

1. Request for a soccer field and outdoor fitness equipment.
2. Requests made for a Dogs Off Leash Area (DOLA)
3. Former pools create a natural divide; concern that the field will always be used for football/one large game; request for something, anything to split up the field; request to intersect the plateau with meandering paths and create zones.
4. Schools should not be allowed to use parks for their playing field.
5. Residents travel from the passageway at Pleasant Boulevard and make it muddy; it should be paved. Make a dedicated cycle path on Mount Pleasant.
6. Make a dedicated or separate path from Avoca to Jackes; cyclists don't stop at Summerhill.
7. Reposition one of the lighting poles.
8. A modern water spray/pool close to the playground; is there a plan to upgrade the playground?

## 4.0 Project Team Considerations & Responses

In review of the comments received, the following are the City's responses to key topics.

### *Graffiti on buildings*

Unfortunately preventing graffiti is a challenge on all city infrastructure, including parks and its amenities. Removing graffiti is easier on a hard, flat surface, as the porosity of the material determines the method of removal. For the features in the north embankment, such as the water feature, as well as the Valve and Access House, it can be removed with a pressure wash or painted over. Please Call 311 to contact Parks Supervisor.

### *Weeding or Maintenance of open plateau/field*

Maintenance will be determined by Parks.

### *Playing sports on the open plateau*

The City design team worked with the Rosehill Vision Committee which intended to keep the plateau open and maximize informal play space. Soccer posts, for example, were not permitted on top of the reservoir to ensure the waterproofing membrane of the reservoir. Any fitness equipment can be discussed with the Councillor and Parks staff upon completion of this work.

Organized sports must request and receive approval from the Parks Permit office.

### *Benches for seniors*

The dimensions of the benches meet the City's accessibility standards which includes seating for seniors.

### *Signage around the park*

Signage will be reviewed by Parks at a later date upon completion of the Parks Wayfinding pilot program.

### *Winter maintenance*

Winter maintenance will be determined by Parks.

### *Accessible park entrance for mobility or wheel chair users*

The park is accessible and people in wheelchairs or mobility devices can access the plateau at four (4) locations around the park: Rosehill entrance, Avoca entrance, Jackes entrance and Valve House/ Summerhill entrance. These entrances are all ground level accessible to the Lower Perimeter Pathway. Ramps are provided at Rosehill and Avoca locations to access the reservoir roof/open space and the water feature on Rosehill.

### *Potential conflicts between cyclist and pedestrians, including speed and treatments to slow down*

The potential conflicts and the speed of cyclists are concerns shared by the City. A suggestion of speed humps is not an option under the Multi Use Trail Guidelines as well as the Accessibility for Ontarians with Disabilities Act (AODA) as it would restrict access or use of these paths for those people in wheelchairs, mobility devices, strollers etc.

We acknowledge that a park design cannot prevent or resolve all conflicts between users, as there are people who choose not to follow park/trail/path etiquette and/or signage. Staff will monitor the use of this multi-use trail.

### *Lower path is too narrow near the playground*

The Lower Perimeter Path will be replaced in approximately the same location and will be 2.1 metres wide. Some parts of this path will be narrowed to 1.8 metres wide to avoid tree removals.

### *Width of the Upper Perimeter pathway*

The eastern side of the Upper Perimeter Pathway width will be increased to 3.0 metres. The service road along the east side of the park is 3.5 metres wide and is pathway for both cyclists and pedestrians. Together, the widths of these paths are 6.5 metres, which meet and exceed the City's Multi-Use Trail guidelines.

### *Path alignment near the Valve House*

Realigning the path to the west of the Valve House would create potential safety concerns with cyclists and pedestrians and the City vehicles accessing the Valve House's Parking Lot. This parking lot provides the minimum turning space and access requirements of Toronto Water vehicles while also not impacting nearby

trees. Upon further discussion, the alignment of the path near the east side of the Valve House was re-designed in an "S" shape curve to widen and open the line of sight for pedestrians and cyclists, so park users can better see oncoming park users.

## 5.0 Next Steps

### 5.1 Revisions to Park Design

The following list identifies features in the park design that has been reconsidered and revised based on the feedback received from the public and the Rosehill Vision Committee.

1. Eastern segment of the Upper Path: will be widened to 3.0 metres to comply with the City's Multi-Use Trail Guidelines. (Note the remaining segments of the Upper Path will stay as 2.1 metres wide)
2. The Trellis located by the Valve House will be removed.
3. The path by the Valve House will be slightly widened and modified to an "S" shape to improve sight lines.
4. Five (5) new benches will be added through the park for a total of 53 new benches and 8 restored benches (total is 61 benches in the park)

### 5.2 Follow Up

With the completion of the park design, the City will issue a tender to have a separate contractor complete the landscape installation. Regular updates to the community will be provided. A Construction Notice will be provided prior to any major changes to construction or impacts.





## Public Meeting

March 4, 2019

### A New Plan for David A Balfour Park Rosehill Reservoir Rehabilitation

The City of Toronto has been working to develop a park enhancement plan for David A Balfour Park as part of the Rosehill Reservoir Rehabilitation. This plan has been developed in collaboration with a group of community representatives, the Rosehill Vision Committee. We invite you to attend the public meeting to learn about the plans for the park and speak to City staff and consultants. The focus of the meeting will be on the park enhancements.

The Park Enhancement Plan will include a number of new features:

- Redesign of the Park Entrance and Water Feature
- Pathways and Lighting
- Public bathroom
- Park amenities, such as seating, benches, picnic tables, trellis.
- Tree canopy



**Date:** Tuesday March 26, 2019

**Time:** Doors Open 6:30 p.m., Presentation at 7 p.m.

**Location:** Christ Church Deer Park, 1570 Yonge Street, Elliot Hall



Illustration of Gateway and Water Feature (including Water Molecule) on Rosehill Avenue, looking west. Details may change after the printing of this notice.

Page 1 of 2



## Public Meeting

Rosehill Reservoir Landscape Plan  
Preliminary Design Concept



Preliminary overview Plan for David A Balfour Park  
Details may change after the printing of this notice.

#### NEED MORE INFORMATION?

If you cannot attend this meeting, the display boards will be posted online on March 27. Please review the boards and send back your comments and questions by Friday April 5, 2019.

<b>Public Consultation</b>	Kate Kusiak, 416-392-1932, <a href="mailto:rosehill@toronto.ca">rosehill@toronto.ca</a>
<b>TTY Hearing Impaired Service</b>	416-338-0889 (7 days a week, 8 a.m. to 5 p.m., closed holidays)
<b>General inquiries</b>	311
<b>Website</b>	<a href="http://www.toronto.ca/rosehill">www.toronto.ca/rosehill</a> - email us to register for updates

Thank you for your patience. Building a great city takes time. Better infrastructure for all of us is worth the wait.

Page 2 of 2



**Rosehill Reservoir Rehabilitation  
A New Design for David A Balfour Park  
Public Consultation Meeting  
Christ Church Deer Park, 1570 Yonge Street, Toronto ON  
April 23, 2019, 6 p.m. to 9 p.m.**

A presentation was given by Kim Storey, a consultant on the rehabilitation project to present the park enhancement plan. Responses are indicated with a bullet (•)

**Lighting**

Are light fixtures going into the little park?

- Yes they are going into little park, in minimal areas.

**Cyclists, Park Users**

When you go around the perimeter of the reservoir, there are a lot of complaints from people, that the path is not wide enough for dogs, people, and bicycles. Is there anything that is going to deter the speed of the bicycles?

- The path will not be widened because it will then impact the tree roots, so the path will remain at 1.8 metres width and 2.1 metres width which is required. Some areas are realigned to work around trees or tree roots.

Bicycles come the wrong way up onto the street, and they come at a terrific speed especially coming down. Resident worries that people are in the way and aren't paying attention. Is there anything that can be looked at to slow the bicycles down?

- There was a suggestion to change the concrete and asphalt to the concrete as a type of material and texture change, at the beginning and ending of those slopes. We have also created that path on the north side of the Valve House so that not everyone is at the same place at the same time.

**Winter Tobogganing**

When putting trees in, they must not interfere with kids tobogganing down the slope.

- Thank you for the suggestion.

**Plateau Pools**

The plan is good as far as it goes, but a glaring omission is the absence of the central fountain and the pools, which were a great addition. What has happened?

- Current best practices include the removal of all elements that could possibly impact the Reservoir structure, so there was a decision to have nothing on the plateau that would damage the roof or waterproofing membrane or infiltrate the water supply.

Those fountains and pools were there since the original construction and did not think there were any problems with it. It is not unusual to have a fountain and shallow pools in a park of this size.

- In addition to the answer provided above (Question #5), during the reservoir's assessment process the investigation noted the damage from the wading pools to the reservoir's structure.

## **Reservoir Structure**

Does the garden impact the reservoir's structure?

- The flowers and shrubs in the Rosehill Garden do not pose the same risk as trees. If maintenance or operations staff need to access the reservoir roof, these plants are easy to transplant to provide necessary access, whereas a tree requires a more heavily involved approach and could potentially encumber access to the roof.

## **Plateau Pools:**

In all the decades that the fountain and pool have been there, how many times exactly did it have to be serviced because it had caused a problem? Was the reservoir ever shut down because the pools and the fountains had to be fixed?

- There was internal/interior maintenance ongoing through the course of the facilities existence. It was shut down but not for reasons of the pools.
- Resident indicates that the City should revisit adding pools and water features to the park as it is important to the park and neighbourhood.

## **Drainage**

Two red flags that have come up. First, was drainage. After visiting the Spadina Reservoir to see how well the grass plateau was, the resident indicated that the reservoir was flooded. The west side of the reservoir had the screening gravel washed out and even with asphalt placed on top, it will sink which is not safe for seniors who walk there.

- Regarding the drainage, there is only about 3 feet (about the height of a table) of coverage on top of the reservoir structure. With the freeze-thaw happening, the frost has not come out of the ground yet, and the water is not being absorbed in, so there will be localized wet areas on top of the Reservoir. The key is that the water is not flooding out. The key is to manage the water and control the flow of water at ideal conditions.

## **Pathway, Bicycles, Maintenance Vehicles**

The second concern is the discussion about bikes and maintenance vehicles using that same path.

- The surface at St Clair reservoir is different from Rosehill Reservoir. There was an existing limestone screenings running track before construction began. The running community indicated their interest to maintain the same track alignment and materials and the running surface was included in the design. We will be looking at the reported washout on that track.
- On Rosehill Reservoir, David A Balfour Park there was no pre-existing running track, but a worn out foot path on top of the reservoir. The park design includes the Upper Perimeter Path made of power washed concrete and will be used by pedestrians in the same way before construction.
- The Service Road on Rosehill Reservoir that runs from Avoca Avenue to the east of the Garden, is a new feature in the park and has been included in presentations in 2016 and 2017. Its dimensions meet the City's multi-use trail guidelines to support both pedestrians and cyclists as primary users. Occasional use is also required by Parks vehicles to maintain the washroom and playground, and Water vehicles to maintain the reservoir's systems by accessing the Valve House and Access House.

## **Path Material**

What happens to asphalt during the winter? On Pleasant Blvd where buses come and seniors from Avoca Avenue tried to walk across but had to give up. If service vehicles are going along that path, from Avoca Avenue past the gardens there was an asphalt path, in the winter it became a skating rink. How is asphalt going to be a fit?

- The lower perimeter pathway will be power washed concrete, which is a premium material. Power washed concrete with a properly engineered base along with re-grading of the entire site and modifying the existing catch basin system, will together be more effective in controlling water drainage, and the stability of the lower pathway base.



- The upper perimeter pathway, including the service roads, will be asphalt.
- Parks operations will determine winter maintenance for all pathways.

### **Construction & Access**

During the construction there was a path that goes down Avoca Avenue to the park, but the pathway seems to be closed.

- This pathway was put in there initially because consultations prior to construction wanted to maintain a north-south path from Summerhill to Avoca Avenue. Once work started, when crews began constructing this pathway members of the community were concerned. After a site walk with community members and Councillor's offices, it was determined that we could not make the pathway sufficiently safe and fully accessible for everyone. It was therefore removed.

### **Dogs**

Is there going to be watering/drinking fountains on top of the hill for the dogs?

- Yes. There is a drinking fountain for dogs in Little Park, and there is also a drinking fountain at the washroom building.

### **Pathway Signage**

To reinforce the comments made about the pathway, a suggestion to have some signs along the path saying "pedestrian priority".

- This is a good idea, and signage will be considered. Parks staff will be reviewing signage upon completion of its wayfinding pilot project. The timing of that pilot project is not confirmed, so Parks will determine any wayfinding installations at a later date after this rehabilitation work. The contractor may install concrete mounting pads, but not the wayfinding signs.

### **Parking Lot at Valve House**

At the moment there is no parking around the park, and noticed in the presentation tonight, there were was some note about assigned parking spots.

- To clarify, the parking that was referred to is where the Valve House is located. The Valve House operations or equipment and trucks is needed, and they require a turning radius to safely turn into and out of the Valve House.
- Public parking will not be provided.

### **Plateau Water/Park Feature**

There used to be a structure in the middle of the park to stop people from using it as a ball park. Suggestion to think of something to go into the middle of the park to confine their activities.

- In working in conjunction with the Rosehill Vision Committee, the park design has reviewed previous iterations where park design elements such as landscaping and planting were considered and the vision changed to become one that is clean, simple and open space on the plateau.

### **Avoca Node**

There is a lot of concrete in the nodes, specifically at Avoca Avenue node.

- We have tried to minimize the amount of concrete. But there needs to be a service road for the service vehicles to access the top of the Reservoir roof from this location, as well as provide access to the Avoca Parks Yard.

### **Lighting**

A resident states that it does not look like there is a lot of trees in that area, so is the light going to reflect up? With the white colour of the concrete, it can cause a lot of light/reflection.

- The light fixtures shine down. There are also a lot of trees around that area and some planting beds, but not too much can be put in that area because of the vehicles that have to pass through there.

### **Trees on Rosehill**

There were many trees on that side of the park at Rosehill. Now it looks sparse.

- It is an ongoing exercise to determine how many trees can be preserved. Some new trees will be planted and some plantings will be ornamental going up the slope. Trees cannot be planted along the slope. We are trying to plant trees to improve the canopy where we can.

### **Trees**

Many trees were cut down at Avoca Avenue which is a staging area. Once these temporary structures (staging area) are gone, is there a way to replant trees (Evergreens) to block out any remaining structures?

- There are no plans to keep staging structures once when the rehabilitation work is completed. Some trees on Rosehill have been preserved with Tree Protection Zones and trees near the Avoca Parks Yard north of the staging area were not impacted or removed due to this project. Any new plantings throughout the park will be accounted for once the tree replanting plan is finalized.

### **Multiple Questions**

Could smaller ponds be built on the slope where the soil is resting and not on the roof of the reservoir? Could some creative approaches be taken? Also, the washrooms could be open more often since they are often closed. The shared paths do not work, they should be separated – one path for pedestrians and one path for cyclists.

- Similar to Questions #5 and #6, no pools will be constructed on top of the reservoir roof or its slope regardless of the size of the ponds. Washroom operations will be reviewed with Parks staff.
- Staff will discuss the concerns of a separate path for cyclists and pedestrians.

Some priority should be given to cyclists to comfortably co-exist in the space. St Clair is a major cycling artery, and this park helps avoid the steep hill on Yonge Street. The entrance for cyclists is most often at Avoca Avenue and not so much on Rosehill to the west, because cyclists come down Avoca.

- Staff will continue to review concerns for cycling through this park.

### **Construction Schedule/Early Park Opening**

Could you find a way to open the north west edge so that residents don't have to walk on Yonge Street. Can this project finish before the expected date?

- We want nothing more than to have this project delivered as soon as possible. This used to be a 5-year project that is now 3-years. We are looking to minimize and advance the schedule at every opportunity.

### **Previous Park Design**

Originally the way the park was set up, there were six distinct areas that people could use. Why can't that be redone? Why can't a 20 foot wide sidewalk going through the centre, coming off Jackes Avenue, going through the back and going across to Avoca Avenue to Little Park and divide up the park with walkways that are concrete?

- Similar to Question #16, working collaboratively with RVC, the intent is to maximize and preserve green and open space on the plateau.

### **Emergency Access**

After waiting for an ambulance for over an hour, I was told that it will not happen again because there is a road, but it's usually chained, so you cannot use it. No one knows where the Summerhill entrance is.

- There is currently unencumbered access for the Toronto Water service vehicles and EMS to access the open portions of the Park. We have discussed access to the park with EMS, Police and Fire Departments.

## **Additional Comments**

### *Plateau & Sports*

Emphasis seems to be on sports over the park. There is a multitude of activities and groups of people if it is one big space. The issue should be considered.

### *Cycling*

The park is officially part of the off-road bike neighbourhood. Bikes will never come from the northwest and cut through Avoca Avenue straight through and not around as proposed in the design. The team needs to rethink the entire park idea.

### *Water Feature & Dogs*

The pipes will be clogged every two weeks as dogs will use it. This should not be provided on parks.

### *Centennial Monument & Water Feature*

No one goes into the park that way. It's a waste of money.