

June 8, 2020.

Rosehill Reservoir Rehabilitation: The New Plan for David A Balfour Park

The City of Toronto has been working to develop a park enhancement plan for David A Balfour Park as part of the Rosehill Reservoir Rehabilitation. The City has developed the plan, working closely with a group of community representatives, the Rosehill Vision Committee, and has also considered the feedback provided by residents. Since the March 2019 public meeting, we have reviewed community feedback, updated the preliminary park design and would like to provide an update regarding the final design for David A Balfour Park.

COMMUNITY FEEDBACK

Approximately 65 comments/questions were received. Comments were collected from the public consultation event, shared over the phone and received by email and mail.

Here's a sample of what we heard:

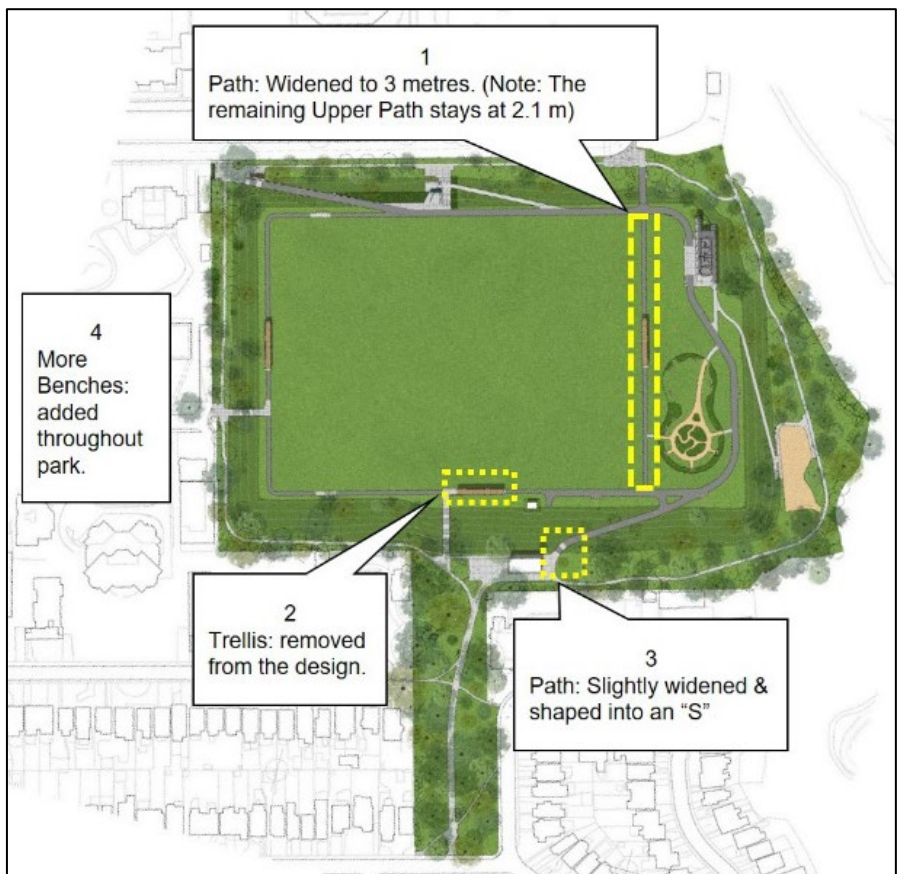
- Overall: Park will be a jewel; the simplicity of overall design; it will be attractive; design is clean and efficient
- Specific Park Elements: Like the way the water molecule is showcased; More benches needed; concern for graffiti on hard surfaces
- Concerns: cycling through the park; width of the Upper Pathway.
- Comments not supporting park design: removal of shallow pools; lack of paths that cross the plateau
- Other or comments out of project scope: request for sports or soccer posts, gated dog area, upgrading the playground.

More information can be found in the Consultation Summary available online at toronto.ca/rosehill.

FINAL FEATURES IN THE NEW DESIGN FOR DAVID A. BALFOUR PARK

The following changes have been made to the design presented at the March 2019 meeting:

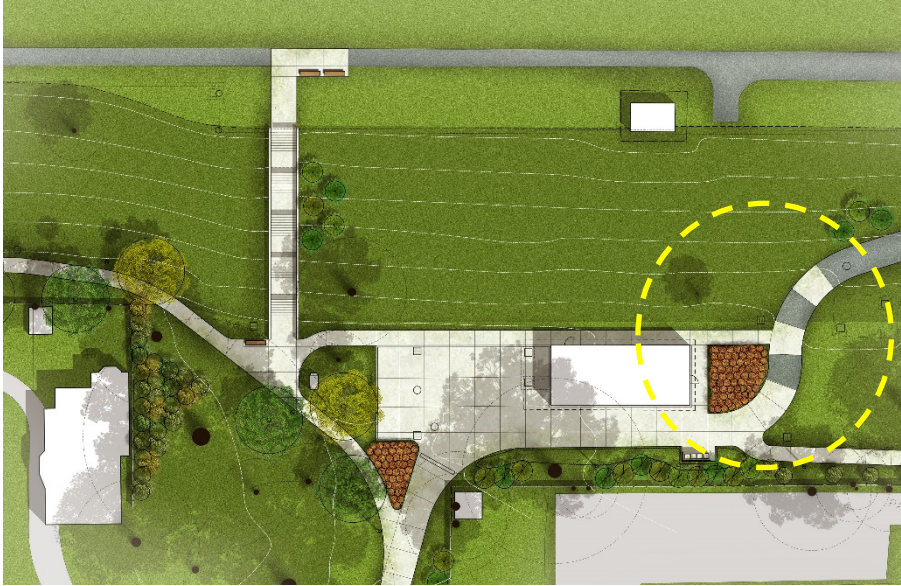
1. **Upper Path** will be widened to 3 metres to comply with the Multi-Use Trail Guidelines. (Note: the remaining segments of the Upper Path will remain 2.1 metres wide).
2. The **trellis** located by the Valve House will be removed. The remaining two trellises facing west and east will remain.
3. The **path by the Valve House** will be slightly widened and modified to an "S" shape to improve sight lines. **See image on reserve page.**
4. **Five new benches** were added for a total of 61 benches.



All other park design features will remain the same as shown in the March 2019 presentation

<https://bit.ly/2AFMM7A>

VALVE HOUSE NODE, NEAR SUMMERHILL ENTRANCE/LITTLE PARK



The design for the node around the Valve House has removed a south-facing trellis and added an "S" curve to the path alignment at the east side of the building (yellow circle).

VIEW OF THE GARDEN, LOOKING NORTH-WEST



NEXT STEPS

With the completion of the park design, the City will issue a tender to have a separate contractor complete the landscape installation. Regular updates to the community will be provided, including the status of Phase 3 to potentially move the construction hoarding around Little Park. A Construction Notice will be provided prior to any major changes to construction or impacts. Completion is expected in Spring 2021.

THANK YOU

On behalf of the staff across six City divisions, we would like to extend a thank you to everyone who participated at a number of community meetings, emails, phone calls since 2016, as well as local community groups and organizations deeply invested in this park, and the councillors for working with staff and prioritizing this initiative.

NEED MORE INFORMATION?

If you have questions about the upcoming work, please contact us.

Public Consultation	Kate Kusiak, 416-392-1932, rosehill@toronto.ca
TTY Hearing Impaired Service	416-338-0889 (7 days a week, 8 a.m. to 5 p.m., closed holidays)
Website	www.toronto.ca/rosehill - email us to register for updates

Thank you for your patience. Building a great city takes time. Better infrastructure for all of us is worth the wait.