

Centennial Park

**MASTERPLAN
UPDATE 2020**



March 11, 2020

PUBLIC WORKSHOP 1

AGENDA

- 6.30 Your Park /Your Memories & Project Principles
- 6.40 Land Acknowledgment and Introduction
- 6.50 Background Review, Inventory and Analysis Presentation
- 7.20 Q&A
- 7.35 Brainstorming Activity 1: Visioning Stations**
- 8.00 Brainstorming Activity2: Opportunities Table Discussions**
- 8.50 Report Back Discussion
- 9.00 Next Steps and Adjourn

Introduction

CITY OF TORONTO TEAM

PARKS AND RECREATION

Casey Morris
Senior Project Coordinator

David O’Hara
Supervisor

Daniel Fusca
Manager, Public Consultation

Cathy Vincelli
Manager, Community
Recreation



CONSULTATION TEAM

PROCESS

Nadia Galati
Public Consultation Lead,
Principal

Sara Udow
Public Consultation Lead,
Principal

Trina Moyan Bell
Indigenous Engagement



DESIGN TEAM

PMA LANDSCAPE ARCHITECTS

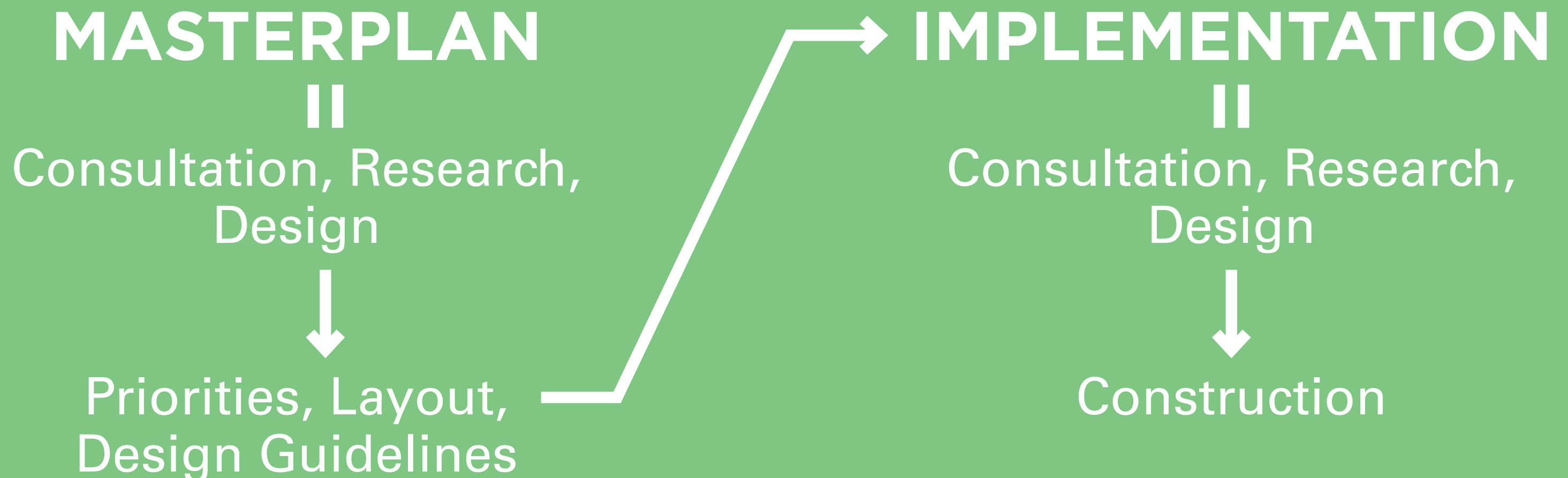
Leslie Morton
Lead Landscape Architect,
Principal

Jasmeen Bains
Landscape Architect,
Project Manager



WHAT IS A PARK MASTERPLAN?

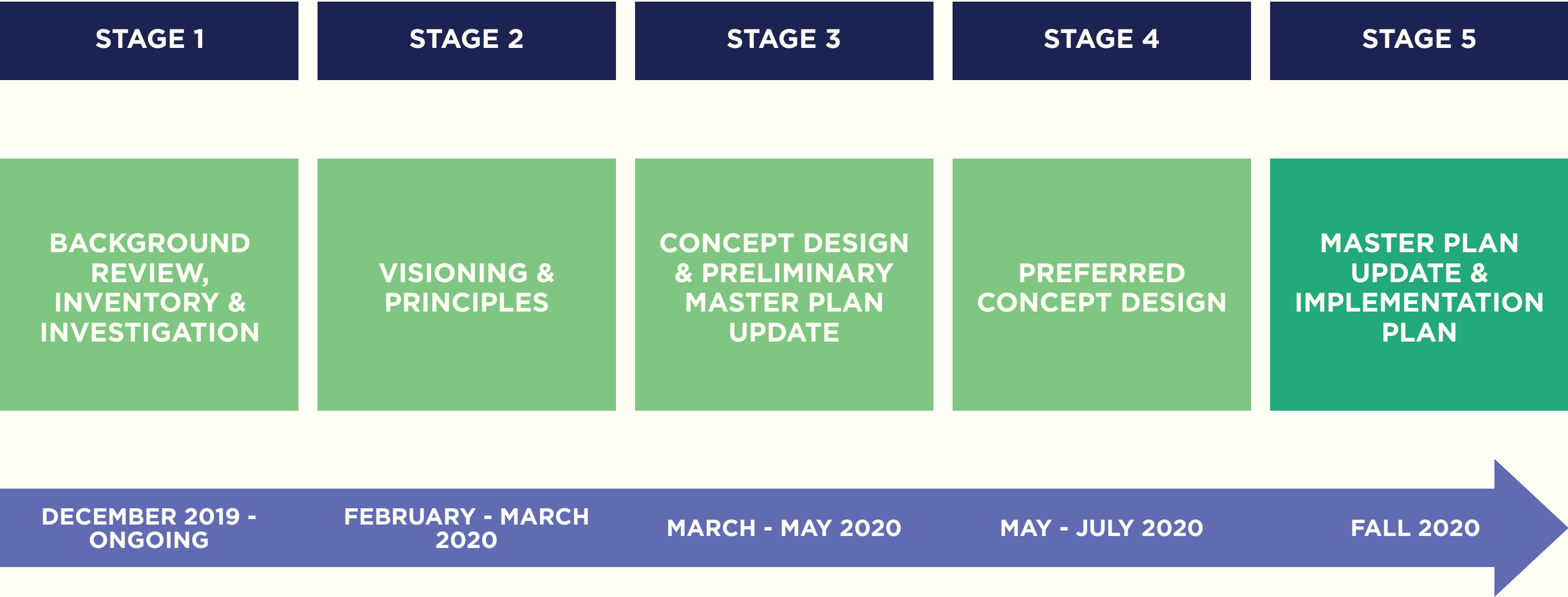
A park masterplan is a dynamic and long-term planning document that provides a vision, objectives and implementable action items to guide decision making for the ongoing improvements and management of parks.



THIS IS AN UPDATE TO THE 2008 CENTENNIAL PARK MASTERPLAN



PROCESS



PURPOSE

Provide informed advice, feedback and ideas to contribute to the development of the Centennial Park Master Plan Update.

DESIRED OUTCOMES

- 1 Explore emergent project findings
- 2 Collect data to inform key project elements/zones
- 3 Ideation on sitewide strategies to inform the future design elements of Centennial Park

Background REVIEW

City Plans and Strategies



PARKLAND STRATEGY (2019)




PROMINENCE & VISIBILITY



Parks need to be located and designed to ensure they are prominent, and visible features of the public realm to support safety, security, accessibility, and livability of the city.

IDENTITY & CHARACTER



Parks need to be situated and designed to take advantage of character-defining elements and features that contribute to creating a sense of place.

USER EXPERIENCE



Parks need to be designed to both attract a wide range of users, and to entice people to stay and linger by providing a range of activities and seating options, reinforcing views, supporting vegetation and tree growth, and providing inclusive spaces that contribute to comfort and social interaction.

PHYSICAL CHARACTERISTICS & THERMAL COMFORT



Parks need to be designed to provide visual interest, be safe and secure, and support a range of passive and active programming and activity. Their design and size should enable a range of year-round programming, maximize sunlight exposure, provide ample shade, and be safe and accessible for people of all ages and abilities.

Prominence & Visibility

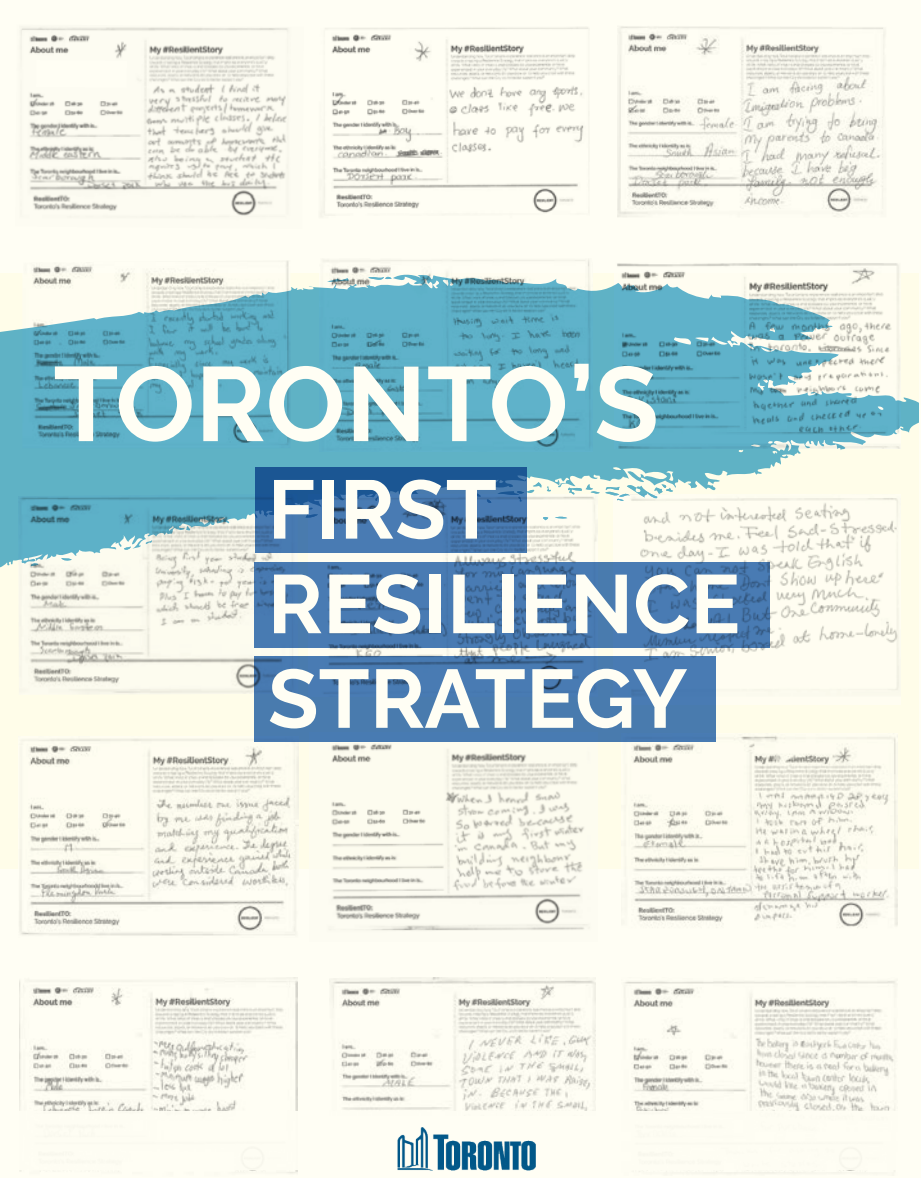
Identity & Character

User Experience

Physical Characteristics & Thermal Comfort

City Plans and Strategies

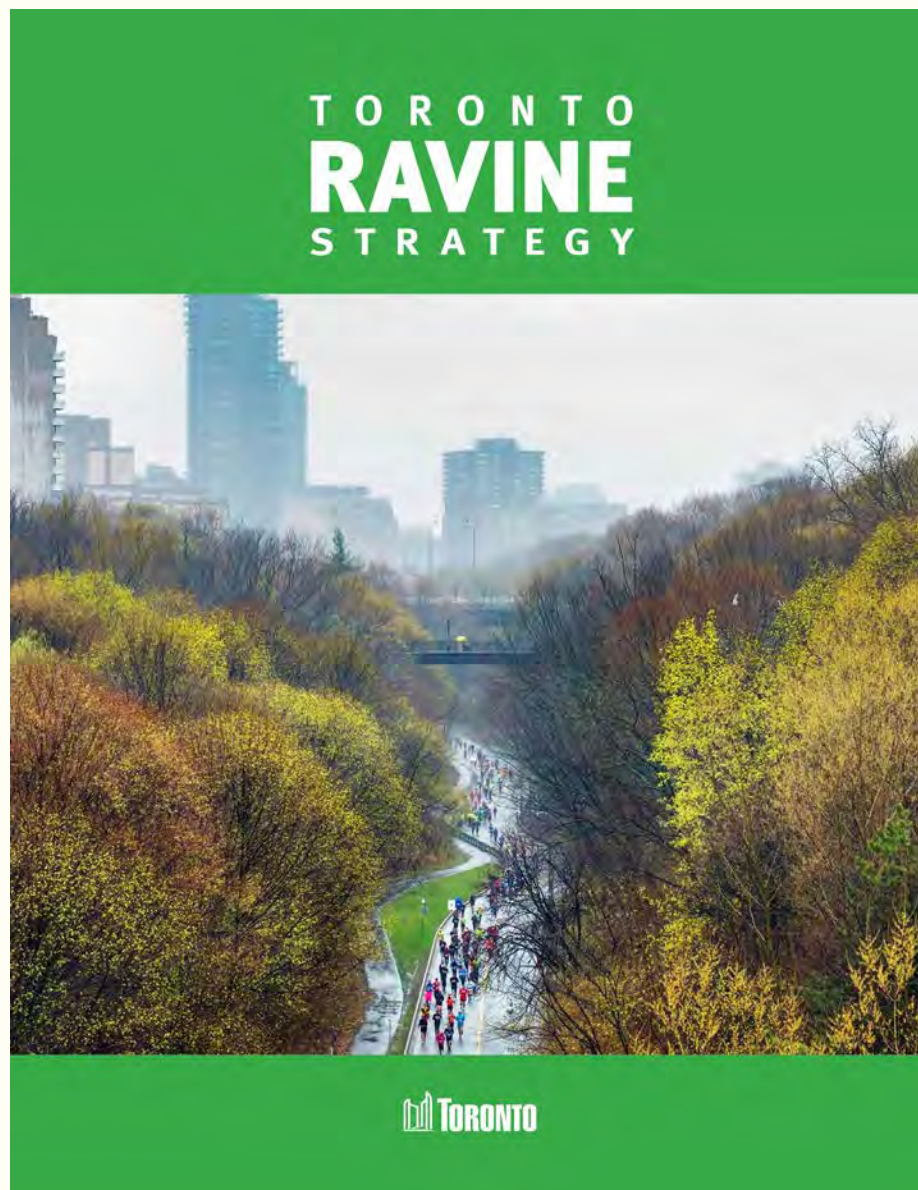
TORONTO'S FIRST RESILIENCE STRATEGY (2019)



- Include strategies to create a resilient park in response to increasingly extreme climatic events, changing temperature impacts, changing cultural environment
- Include strategies to reduce greenhouse emissions caused by park
- Include strategies to create a self-sustaining park
- Support alternate transportation options to and within park

City Plans and Strategies

TORONTO RAVINE STRATEGY (2017)



**Consider access, connection, restoration
AND protection**

**Consider alternative stormwater
management strategies to improve
water quality in Etobicoke and Renforth
creeks**

City Plans and Strategies

TORONTO REGIONAL CONSERVATION AUTHORITY:
Reports, Studies and Assessments

Centennial Park Study Area
Terrestrial Biological Inventory
and Assessment

February, 2007

Contact: Sue Hayes
Toronto Region Conservation Authority
Ecology Division
Regional Watershed Monitoring Program



Etobicoke and Mimico Creeks
Watersheds Technical Update Report
(2010)

TRCA Terrestrial Biological Assessment
(2007)

Greening Our Watersheds
(2002)

Centennial Park FACILITIES ASSESSMENT

Centennial Park Master Plan Facilities and Service Planning Assessment (2020)

IMPROVEMENTS:

- Replacement of ski hill activity
- Ski Chalet
- Space for large-scale events
- Trails, playgrounds, open space, ponds, picnic areas & shelters
- BMX Park partnerships

ADDITIONS:

- Splashpad and district playground
- Seasonal winter dome for stadium
- Community level skatepark
- Lit multi-use hard court
- Cluster, improve, poss. increase fields
- Cluster, improve, light, possibly decrease ball diamonds
- Other small scale park-based amenities

REMOVALS:

- Ski lifts and snow maker
- Wading pool

Ski Hill Review

2018 SKI HILL ASSESSMENT

- **Unstable settling slope**
- **Major infrastructure improvements required**

2019 FACILITIES MASTER PLAN ASSESSMENT

FINDINGS BASED ON:

- **Climate**
- **Trends**
- **Usage**
- **Service**

RECOMMENDATIONS:

- **Programming and services should cease when operation becomes inviable**
- **Consolidate programing at Earl Bales Snow Centre**
- **Enhance year round use of ski chalet**
- **Vision for future use**

Curling Strategy

CURLING STRATEGY

- **As part of Toronto's 20-year Facilities Master Plan, City staff undertook a review of the existing curling facilities across the city and determined that no additional curling facilities were required.**
- **In October 2019, as part of approving the Facilities Master Plan Implementation Strategy, Council directed staff to develop a Curling Strategy to monitor and assess trends and participation in curling.**
- **Staff are currently developing a Curling Strategy (to be completed by year-end) to re-assess the context of curling facilities and programming in the city and identify potential solutions.**
- **The City's next steps related to curling facilities cannot be determined until the curling strategy is completed and its recommendations are considered by Council**



Centennial Park Master Plan (2008)
Overall Plan

Legend

City of Mississauga Bus Stops

City of Toronto Bus Stops

Proposed Bus Drop Off Loop

Paved Vehicular with Sidewalk

Off-Road Bike Lane

Primary Paths (Paved Multi-Use)

Secondary Paths (Paved Multi-Use)

Pedestrian Paths (including boardwalks)

Disk Golf

Underground Storm Water Treatment Facility Beneath Field



Centennial Park Master Plan (2008)
Zones

RATHER THAN ZONES:

Leverage existing infrastructure
(buildings, paths, topography)

Group programs together where logical;
connect disparate programs through
circulation



Centennial Park Master Plan (2008)
Principles

SIX PRINCIPLES (2008):

- 1 Centre of Excellence
- 2 Environmental protection and enhancement
- 3 Cohesion and integrated park design
- 4 Creation of rooms
- 5 Separation of active and passive recreation
- 6 Creation of gateways

UPDATED PRINCIPLES (2020):

- 1 Centre of Excellence
- 2 **Ecological enhancement and resilience**
- 3 **Cohesive design with clear identity and wayfinding**
- 4 **Creation of experiences**
- 5 **Organization of recreation in complement to ecology**
- 6 Creation of gateways

What We Heard: INITIAL CONSULTATION (SUMMER 2019)

Centennial Park Master Plan Review, Initial Conversations (2019)

KEY STRENGTHS:

- 1 Sports fields**
- 2 Conservatory**
- 3 Abundant parking & adjacencies to highways**
- 4 Scale**
- 5 Picnic areas**
- 6 Ski Hill**



Centennial Park Master Plan Review, Initial Conversations (2019)

KEY CHALLENGES:

- 1 Wayfinding & dispersed program
- 2 State of disrepair
- 3 Insufficient amenities for sports players
- 4 Declining natural heritage
- 5 No dog off leash area (DOLA)
- 6 Lack of identity/gateways
- 7 Damage from events
- 8 Accessibility



Centennial Park Master Plan Review, Initial Conversations (2019)

OPPORTUNITIES:

- 1 Sports facilities organization, enhancement & additions**
- 2 Consolidated playground**
- 3 Re-imagined ski hill, all-season activities**
- 4 Increase services/programming**
- 5 Enhance natural areas, picnic areas and conservatory**
- 7 Accessible pathways**
- 8 Improve wayfinding and gateways**
- 9 Create identity**

Inventory & ANALYSIS



**Centennial
Park**
526 acres



**High Park,
Toronto**
400 acres



**Stanley Park,
Vancouver**
1001 acres



**Central Park,
New York City**
840 acres



401

Richview Park

427

West Deane
Park

Hampshire
Heights Park

Echo Valley
Park

Tom Riley
Park

Centennial
Park

Humber
River

Black Creek

Mimico Creek

Etobicoke
Creek

Renforth
Creek

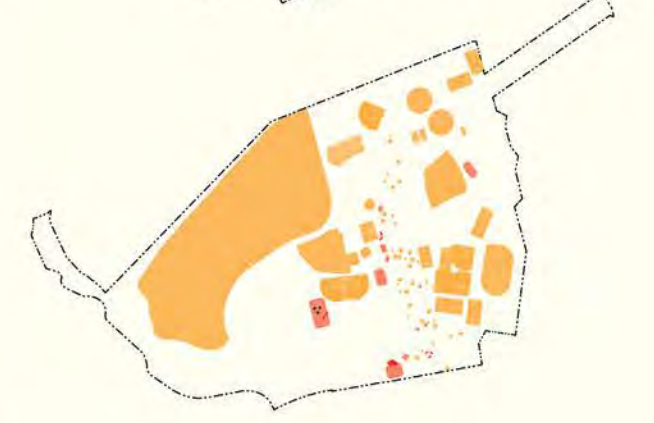
FOUR STORIES:

WATER

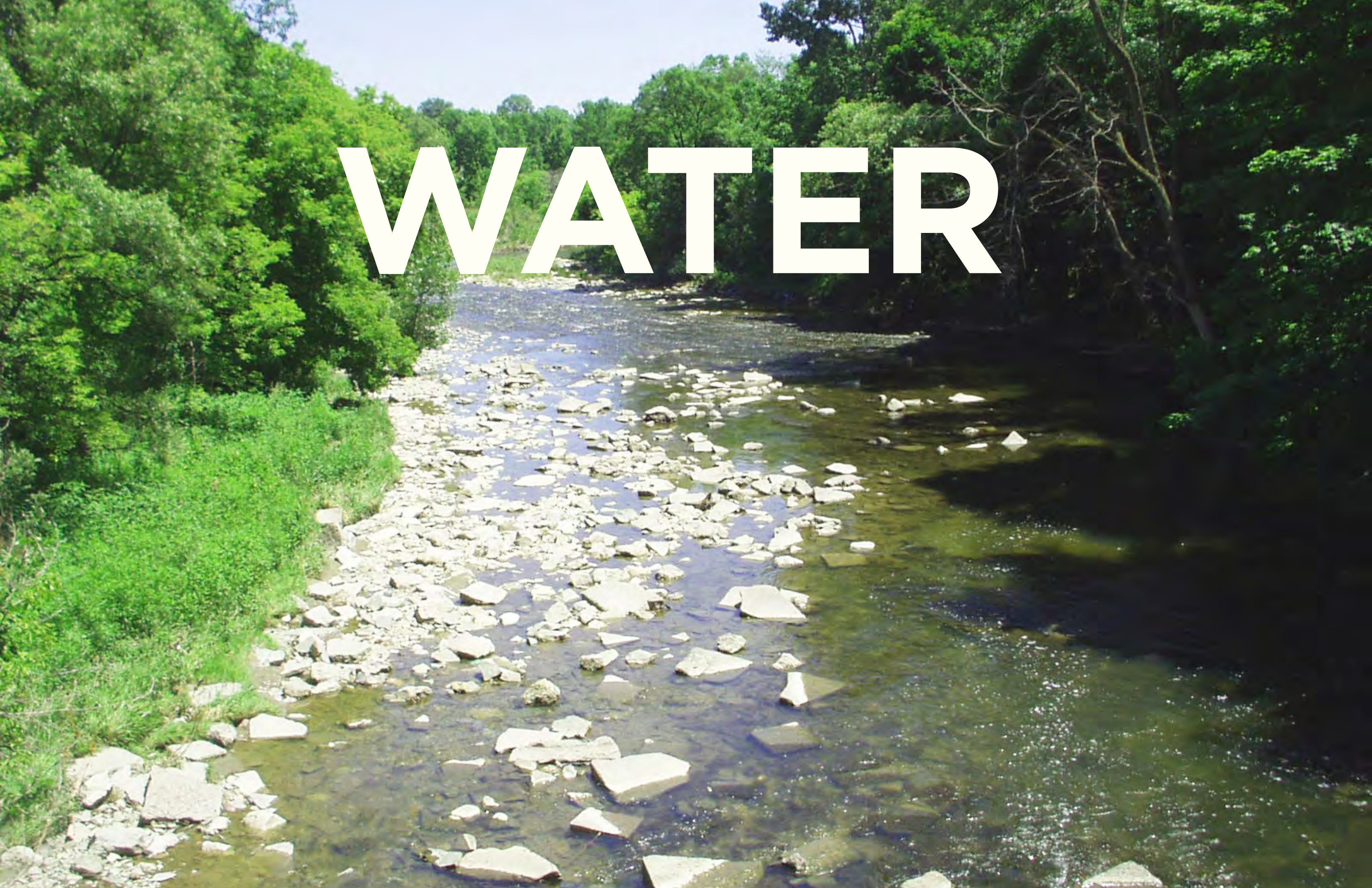
ECOLOGY

MOVEMENT

CULTURE



WATER



ECOLOGY



MOVEMENT

Centennial Park Road

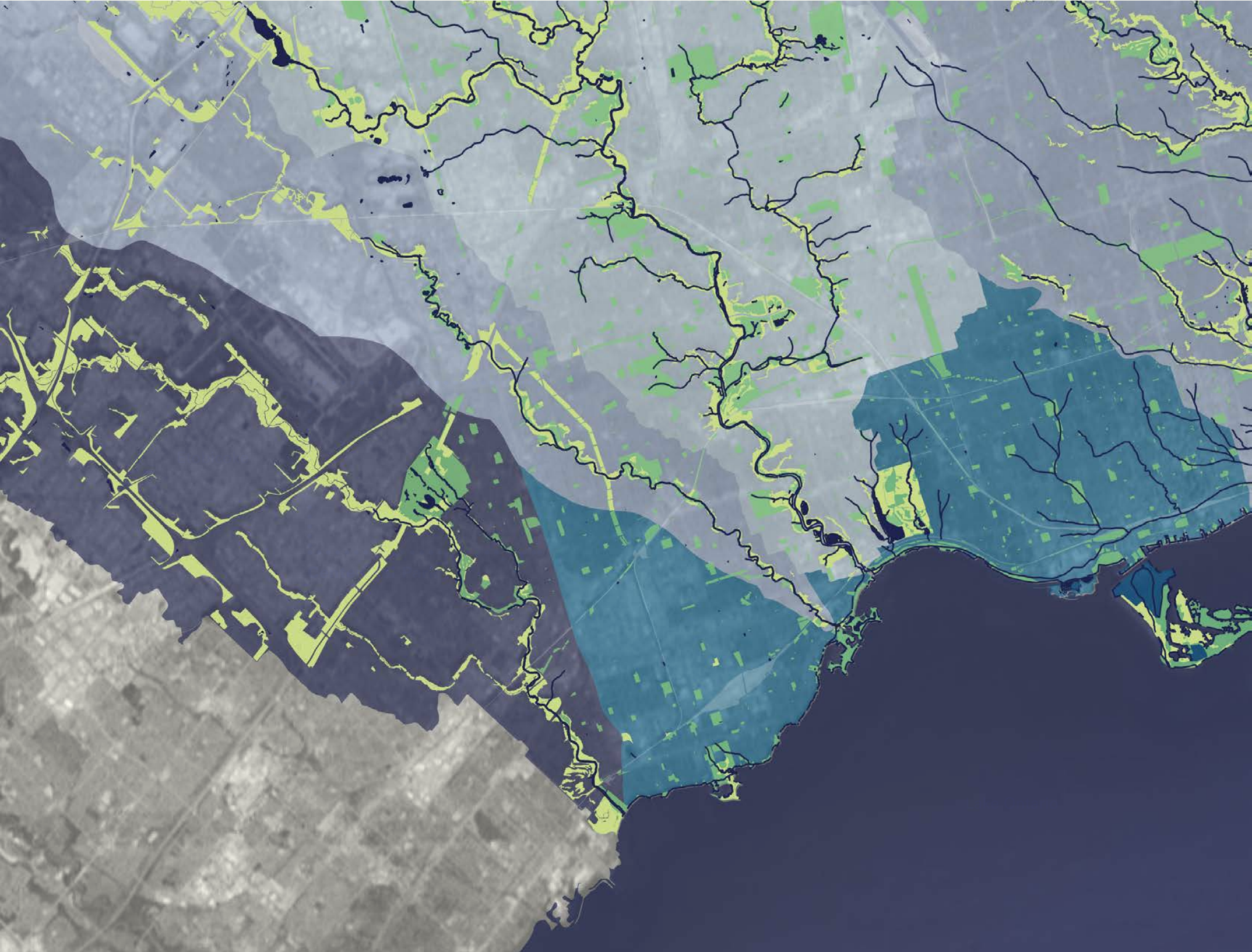
CULTURE



1976 Summer Paralympics

WATER

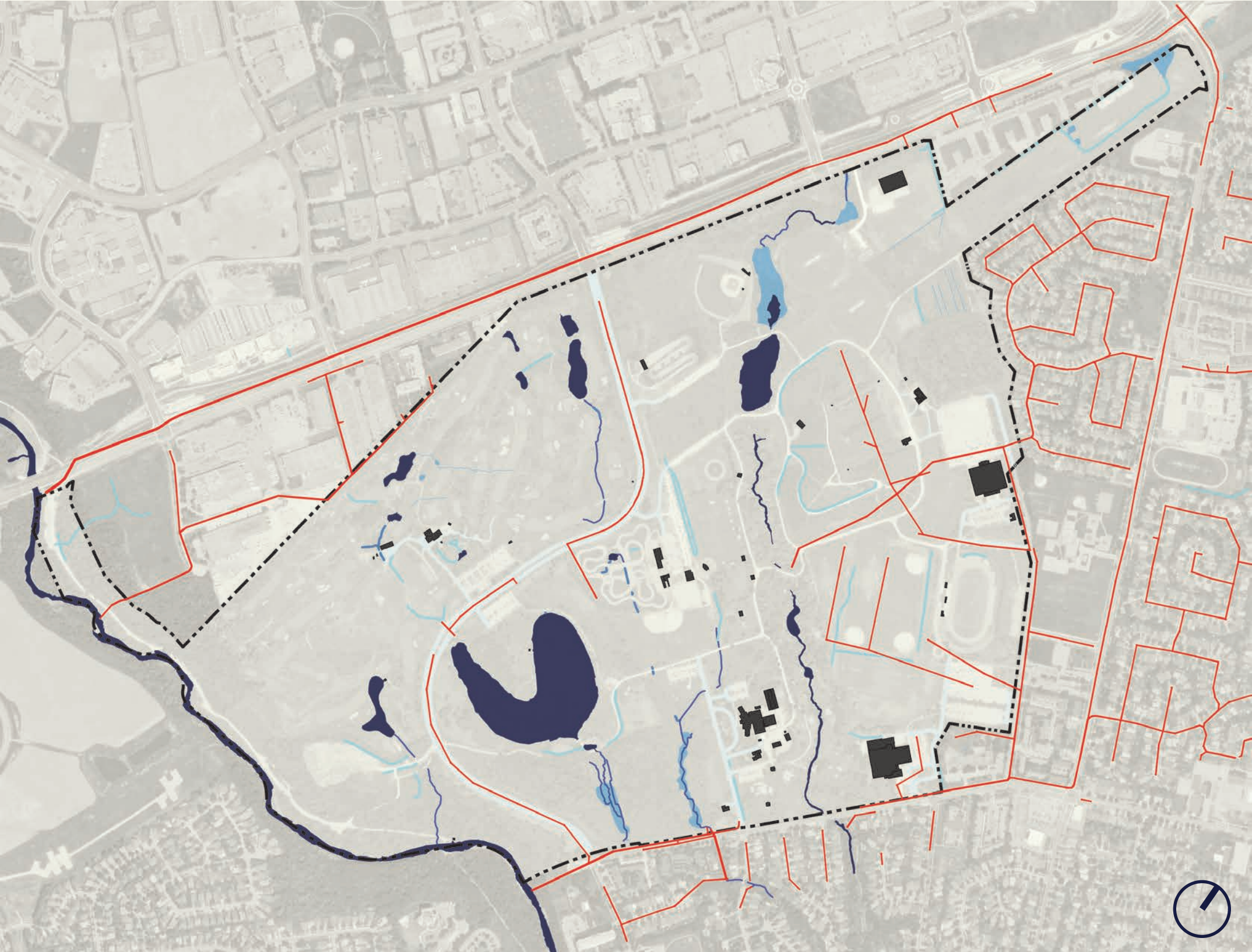
ETOBICOKE CREEK WATERSHED



LEGEND

- Water Body
- City Green Space

EXISTING HYDROLOGY



LEGEND

- Project Boundary
- Site Servicing (Stormwater)
- Pond / Lake / River
- Wetland
- Single Stream
- Double Stream
- Swale
- Ditch

Etobicoke Creek







Renforth Creek And Ponds



RAVINE PROTECTION



LEGEND

-  Project Boundary
-  Ravine and Natural Feature Protection Bylaw - protects the forest and ravine by requiring permit prior to destruction of trees
-  TRCA Regulated Area - protects valley and stream corridors by prohibiting certain activities unless permit has been issued by TRCA
-  Water Body

HYDROLOGY + NATURAL HERITAGE SYSTEM



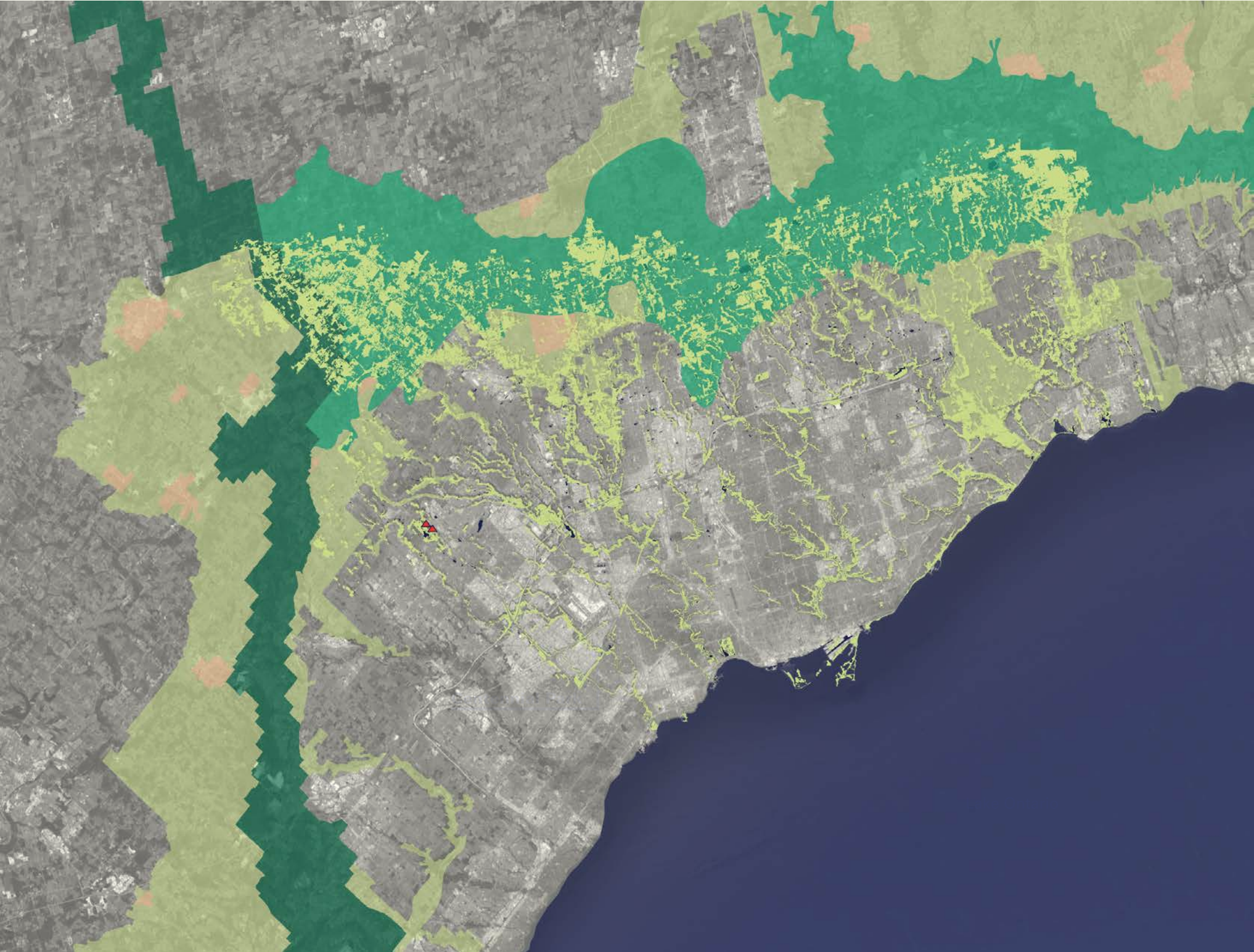
LEGEND

- Project Boundary
- TRCA Regulated Area
- Water Body
- Existing Natural Cover
- Potential Natural Cover
- Site Servicing

References:
1. "Target Natural Heritage System TRCA." TRCA Open Data, data.trca.ca/.
2. Terrestrial Natural Heritage System Strategy. Appendix D: Setting Terrestrial Natural System Targets. TRCA.

ECOLOGY

REGIONAL NATURAL HERITAGE SYSTEM / GREENBELT AREA

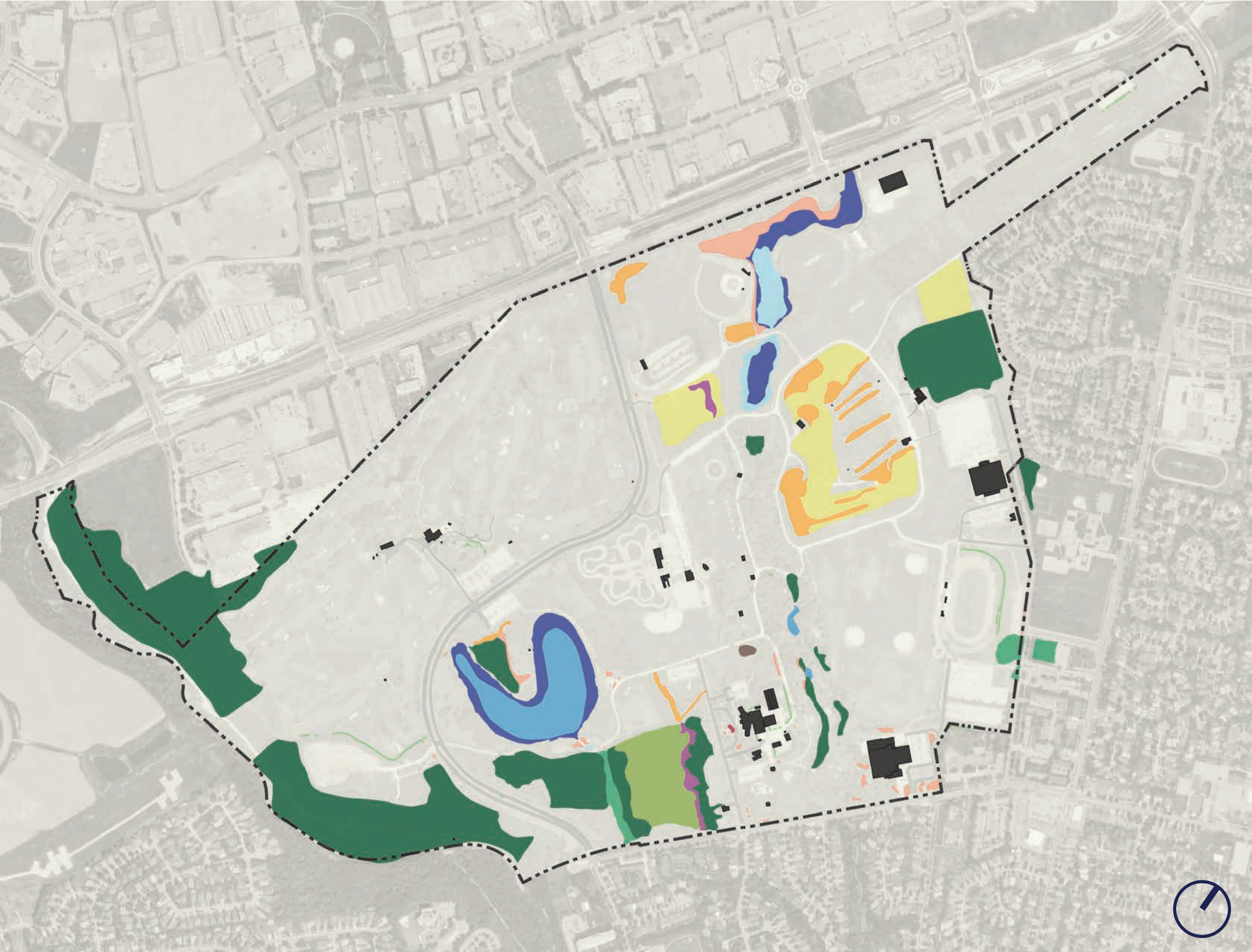


LEGEND

-  Oak Ridges Moraine Area
-  Protected Countryside
-  Niagara Escarpment Plan Area
-  Towns / Villages
-  Existing Natural Cover

References:
1. Greenbelt Plan 2017.

ECOLOGICAL LAND CLASSIFICATION



LEGEND

- Project Boundary
- Cultural Meadow
- Cultural Plantation
- Cultural Savannah
- Cultural Thicket
- Cultural Woodland
- Deciduous Forest
- Meadow Marsh
- Shallow Marsh
- Open Water
- Mixed Shallow Aquatic
- Submerged Shallow Aquatic
- Deciduous Swamp

* Habitat Patch Quality received 'Poor' to 'Very Poor' scoring according to the Centennial Park Study Area: Terrestrial Biological Inventory and Assessment, February 2007.

FLORA SPECIES OF INTEREST



LEGEND

- Project Boundary
- Flora Species



Wild Leeks



White Trillium



Virginia Mountain Mint



Shagbark Hickory

FAUNA SPECIES OF INTEREST



LEGEND

- Project Boundary
- Birds
- Amphibians
- Mammals



Willow Flycatcher



Green Heron



Virginia Rail



Hairy Woodpecker



Red-Eyed Vireo



Cooper's Hawk



Gray Treefrog



American Toad

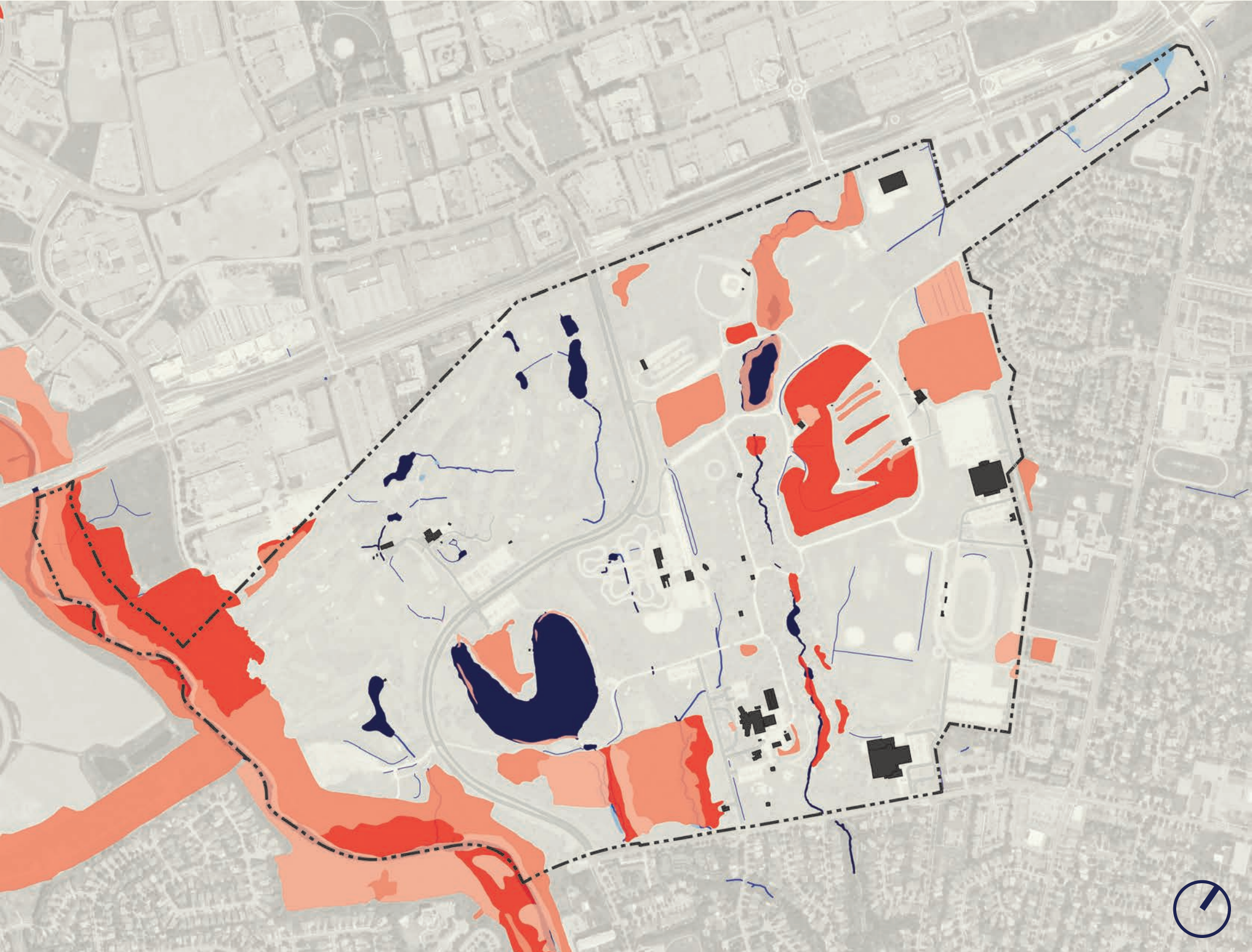


Muskrat







Eastern Cottontail

EXOTIC SPECIES



LEGEND

-  Project Boundary
-  Light
-  Moderate
-  Severe



Garlic Mustard



Phragmites



European Buckthorn



Dog Strangling Vine

MOWED LAWN



LEGEND




- Project Boundary
- Mowed Lawn



MOWED LAWN + TREES

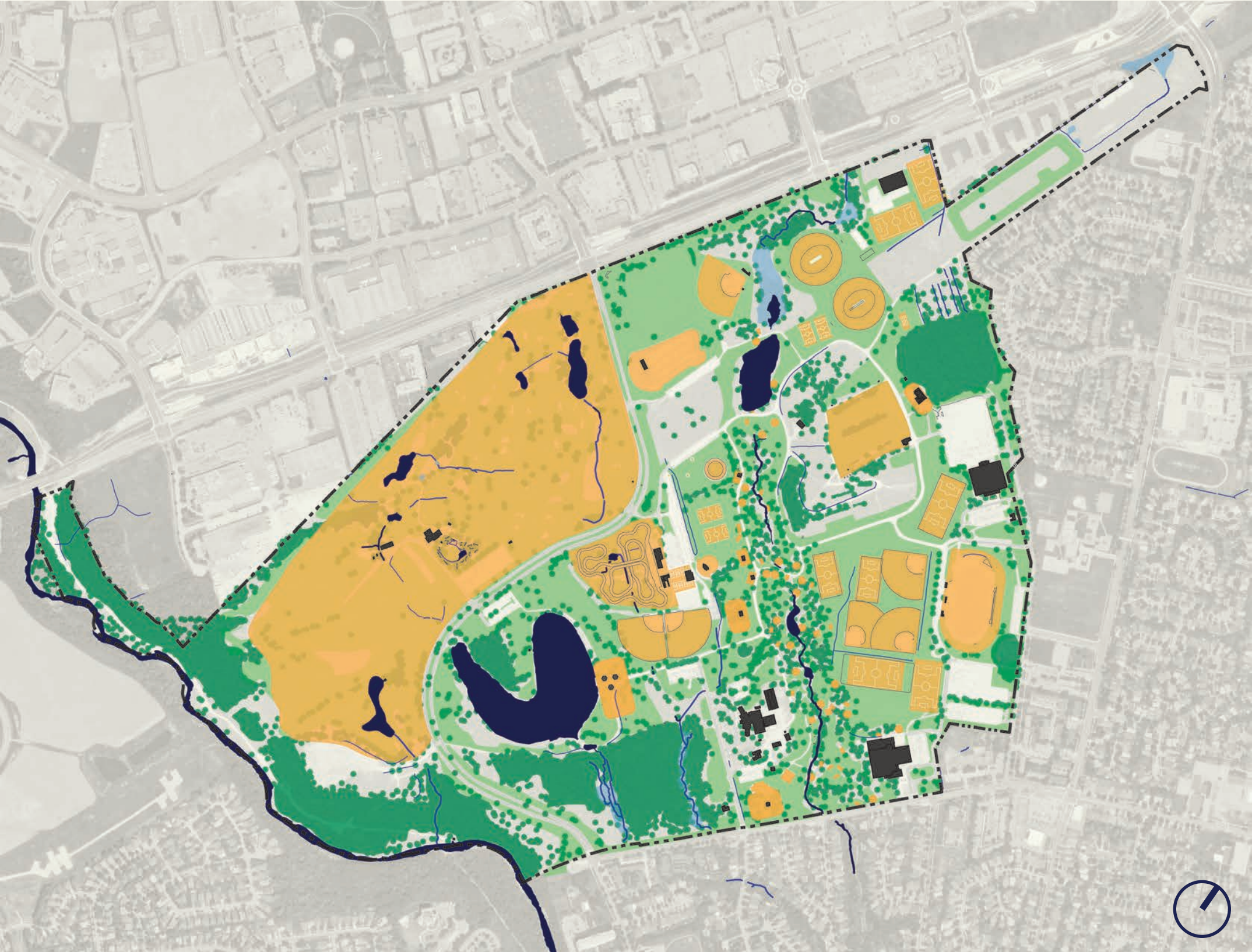


LEGEND

-  Project Boundary
-  Mowed Lawn
-  Treed Area



MOWED LAWN + PROGRAMMED AREAS

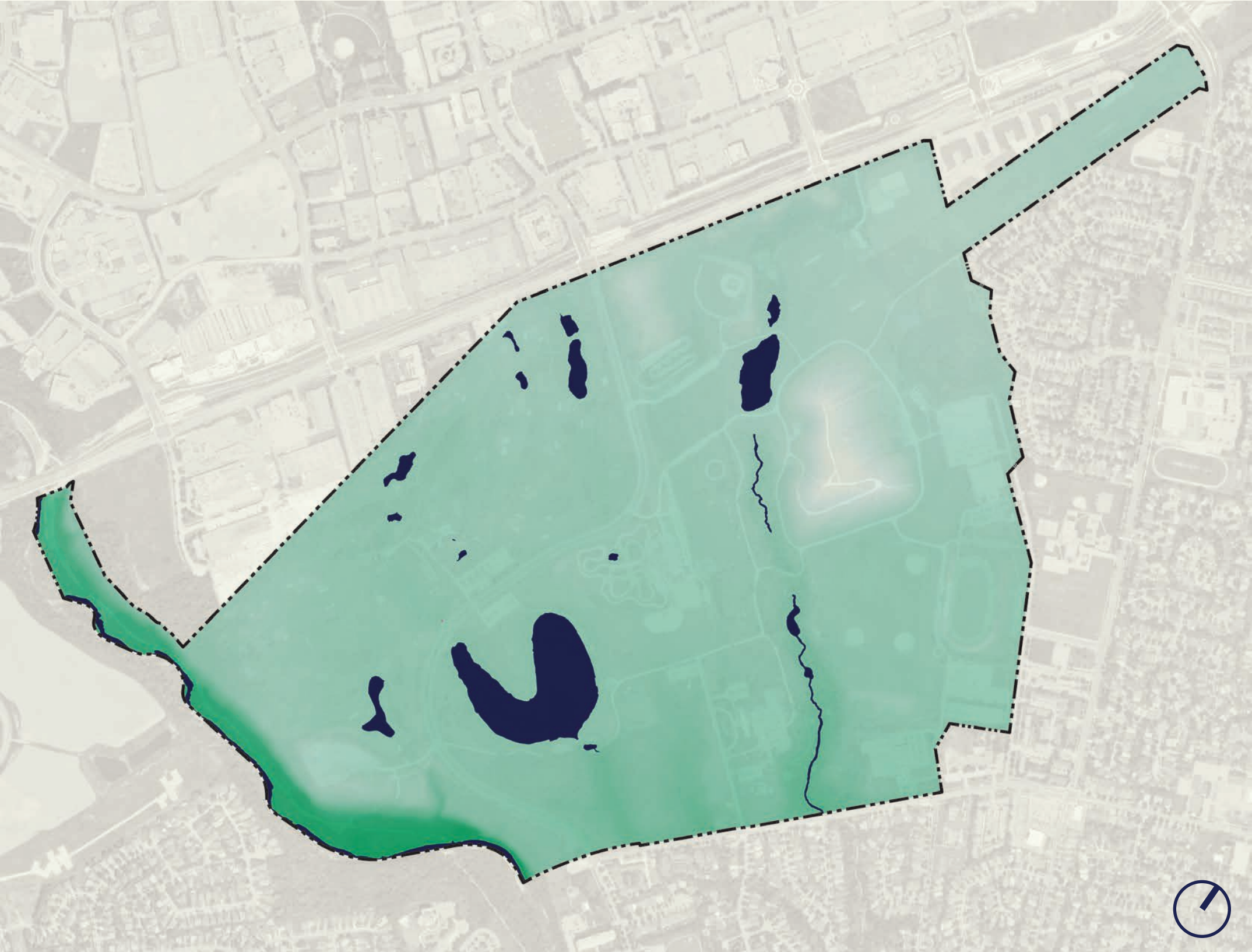


LEGEND

- Project Boundary
- Light Green Mowed Lawn
- Dark Green Treed Area
- Orange Programmed Areas



TOPOGRAPHY



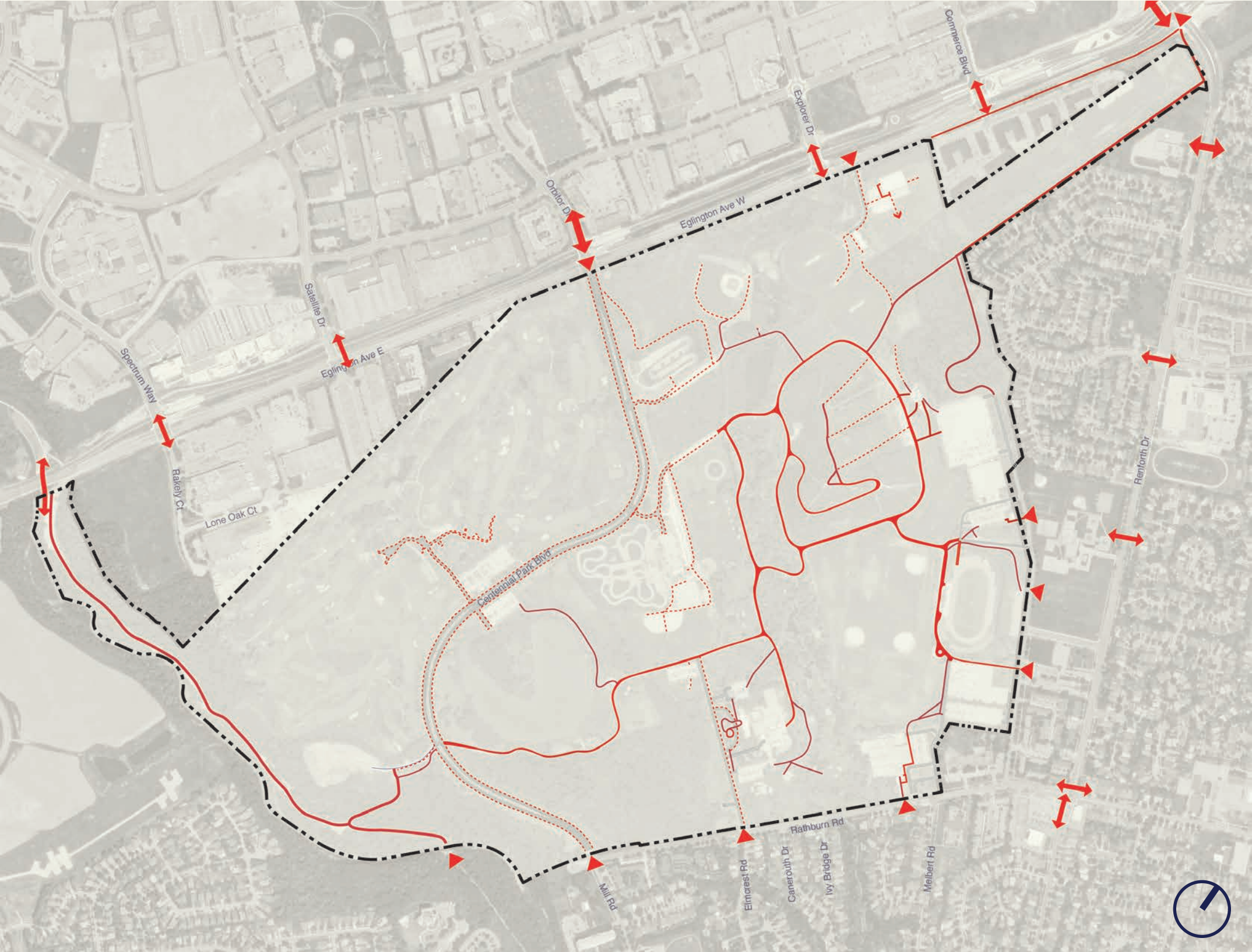
LEGEND

- Project Boundary
- high
- low



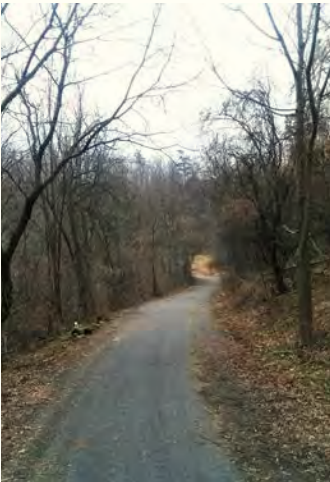
MOVEMENT

PEDESTRIAN CIRCULATION

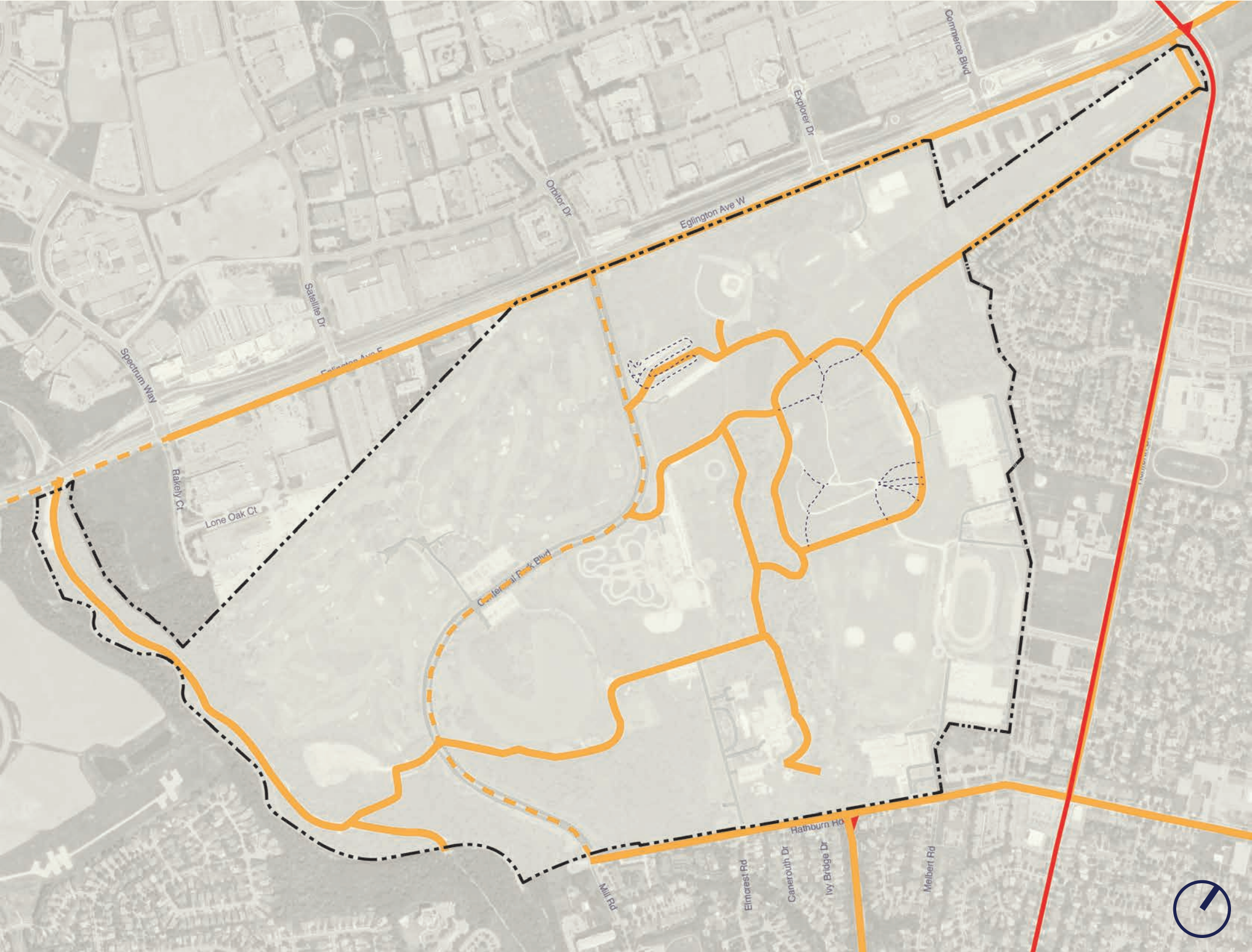


LEGEND

- Project Boundary
- Formal Pathway + Trail
- - - Informal Pathway
- ▲ Entry Nodes
- ↔ Formal Lit Crossings



CYCLIST CIRCULATION

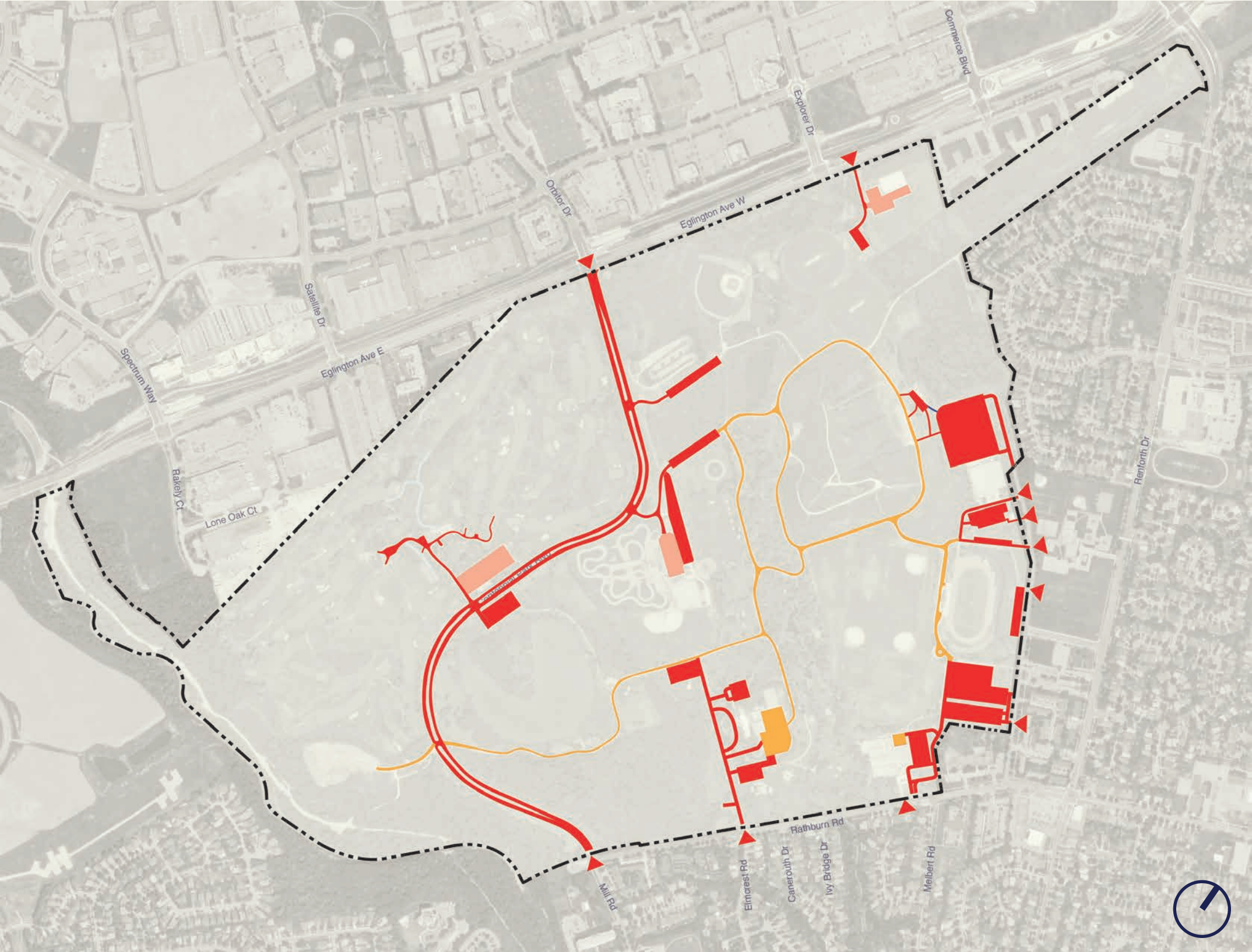


LEGEND

- Project Boundary
- Bike Lanes
- Bike Trails
- Proposed Connection
- Informal Mountain Bike Routes
- Bike Trail Entrance

References:
1. "Cycling Network Plan". City of Toronto Open Data, 2016. The Cycling Network Plan establish a priority framework for Major City-Wide Cycling Routes, and share next steps for effective implementation of proposed cycling infrastructure.

VEHICULAR CIRCULATION



LEGEND

- Project Boundary
- Public Use
- Private Use
- Designated City Use
- Public Parking
- Private Parking
- Designated City Traffic Only



PUBLIC TRANSIT



LEGEND

- Project Boundary
- MiWay Transit
- TTC Transit
- GO Transit
- Future Eglinton LRT
- Bus Stop / Station

CULTURE

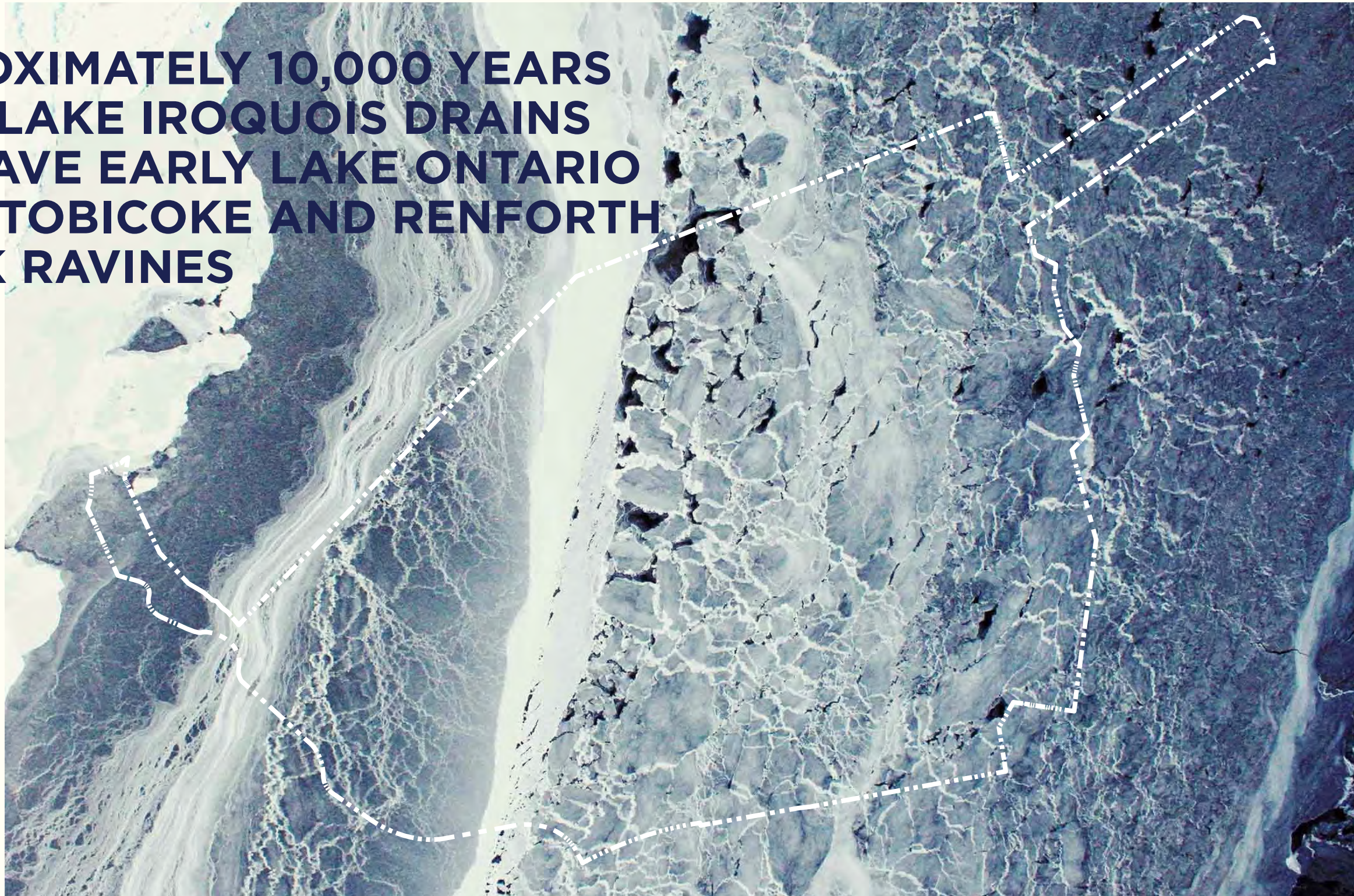
SITE HISTORY

APPROXIMATELY 15,000
YEARS AGO: LAST GLACIATION
RETREATS



SITE HISTORY

**APPROXIMATELY 10,000 YEARS
AGO: LAKE IROQUOIS DRAINS
TO LEAVE EARLY LAKE ONTARIO
AND ETOBICOKE AND RENFORTH
CREEK RAVINES**



SITE HISTORY

**10,000 YEARS AGO:
LAND OF CENTENNIAL PARK HAS
BEEN OCCUPIED BY HUMANS IN
SOME WAY SINCE THEN**



SITE HISTORY

1957:
PREDOMINATELY DAIRY FARMS



SITE HISTORY

**1967:
PLANS DEVELOPED
GARBAGE HILL CREATED
PARK OPENED WITH STADIUM,
WADING POOL, FLYING CIRCLES**



SITE HISTORY

**1977:
SKI HILL, CONSERVATORY,
BASEBALL DIAMONDS, AREA, SKI
CHALET, OLYMPIUM, DISC GOLF,
EXERCISE COURSE**



SITE HISTORY

**1989:
TOBOGGAN HILL, CRICKET
PITCHES, GOLF COURSE,
MINI-INDY, POND**



SITE HISTORY

**2002:
SOCCER CITY, ADDITIONAL
BASEBALL DIAMONDS, GOLF
HOLES, STADIUM TRACK**

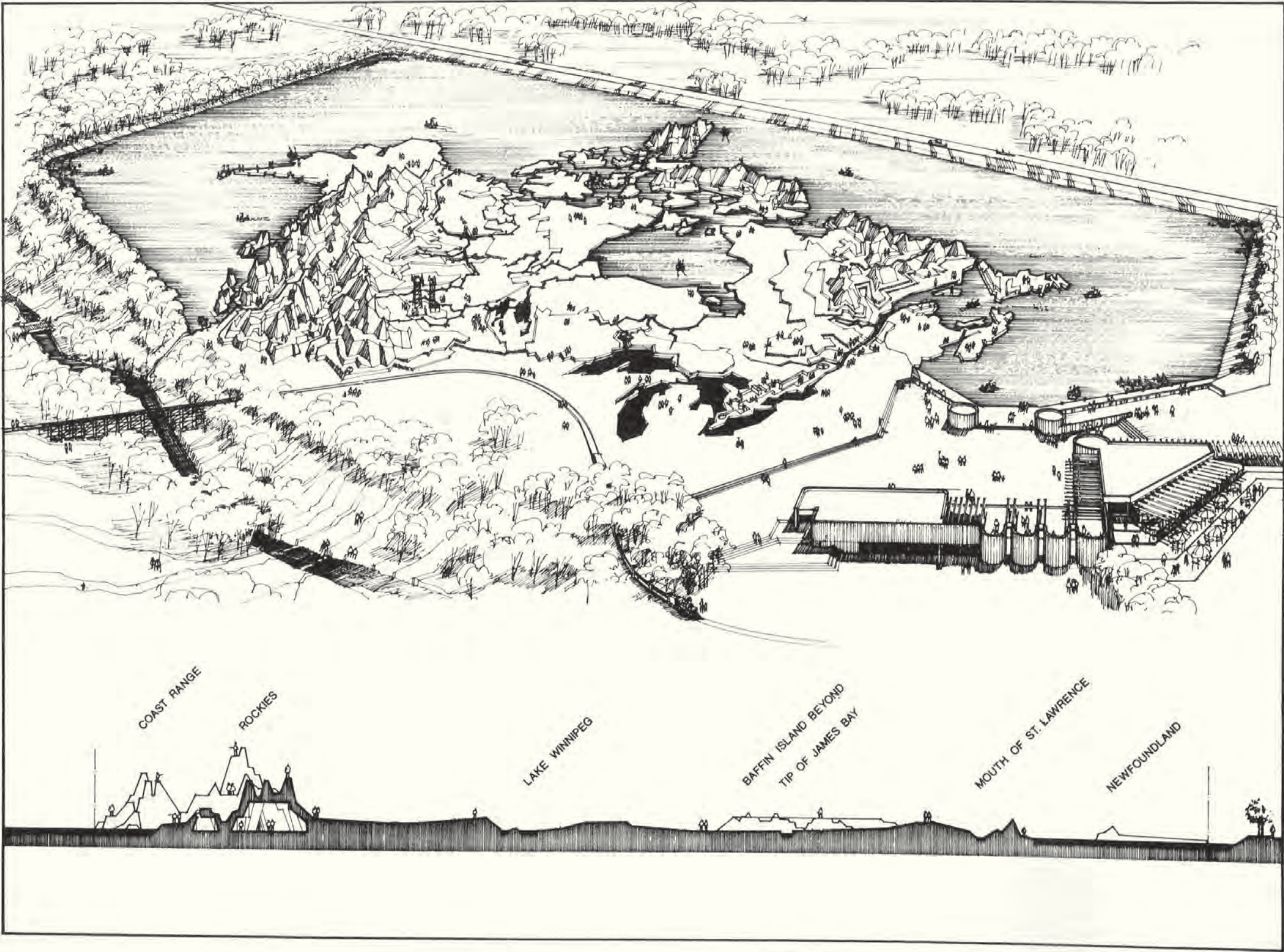
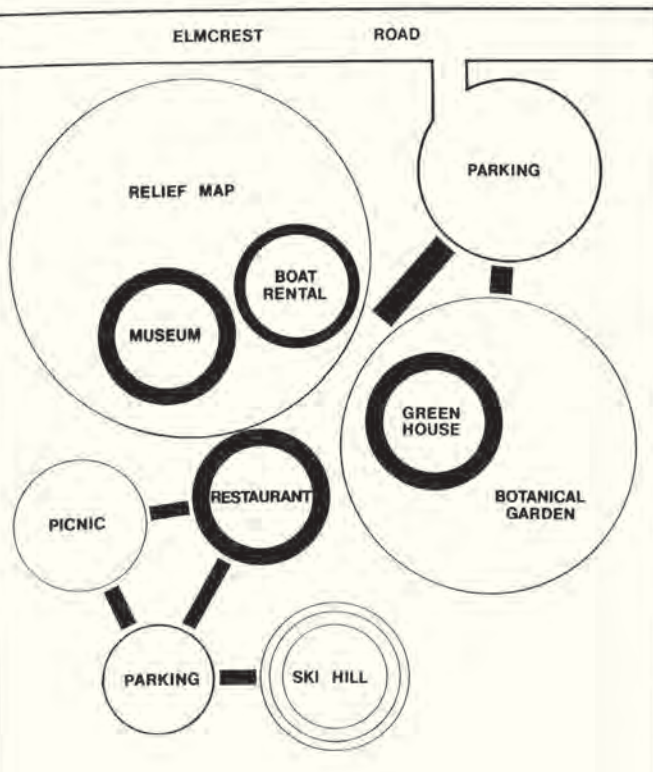


SITE HISTORY

2015:
PAN AM BMX CENTRE



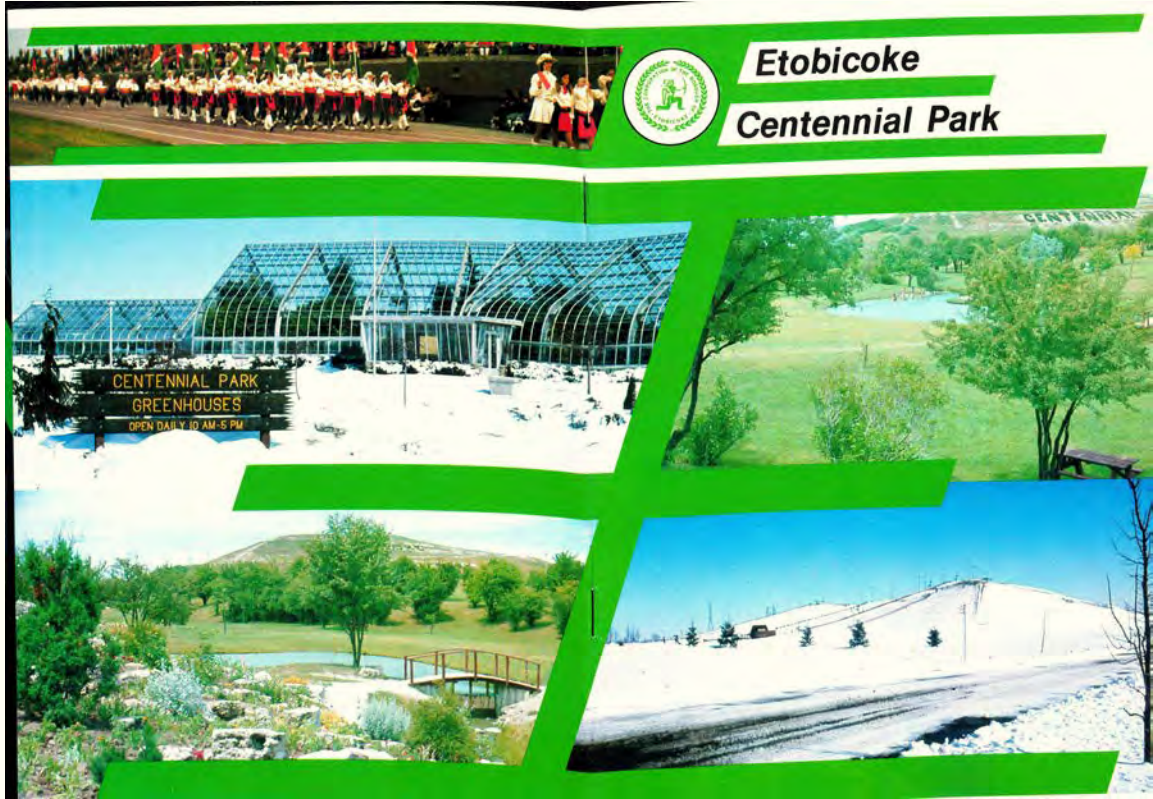
1968 RELIEF MAP OF CANADA PROPOSAL,
RAYMOND MORIYAMA



SITE HISTORY



1976 PARK BROCHURE



Centennial Kiwanis Exercise Course



Opened in June of 1975, the Centennial Kiwanis Exercise Course provides an opportunity for residents of Etobicoke to jog and exercise at their own leisure.

This 1½ mile or 2.5 km long course follows a path around Centennial Park on its west side and is designed similar to the "Vita Parcours" model of exercise courses which presently exist in many European countries. There are 20 stations with signs at each one giving pictorial and written instructions on the exercise to be done as well as giving directions to the next station. The entire course is divided into 4 different circuits of varying distances and difficulty, so that participants can complete as much as they wish at any given time.

Those stations, approximately 10, requiring a piece of equipment are constructed of wood so that they will blend into the natural environment. Construction of this course was sponsored jointly by the Humber Valley Kiwanis Club and the Etobicoke Parks and Recreation Services Department.



Picnic Areas

One of the busier areas of the Park throughout the spring and summer months are the picnic sites. Recognizing a need to service small family picnics as well as large organized gatherings, the designated areas are equipped with barbecue stands, picnic shelters, and for the children, all types of playground equipment. For group gatherings, application must be made to Centennial Park for a picnic permit.



Wading Pool

Located on the west side of the Park near the south picnic area, the Centennial Park Wading Pool is a popular spot for children on hot days. During the summer months, this pool, along with the other 16 wading pools in Etobicoke, is supervised by qualified aquatics staff hired each season by the Parks and Recreation Services Department.

Unique in its 4-tiered structural design, construction of this wading pool was partially sponsored by the Rotary Club of Toronto-Islington.



Arena



This dual surfaced arena completed in 1972, is a hive of activity both summer and winter. Full use is made of the two ice surfaces each 85' x 185' for hockey, lacrosse, figure skating and public skating as well as for community and industrial displays. In addition to a spectator seating capacity of 1,000 in the West Arena and 600 in the East Arena, the building has two lounges and/or viewing rooms, eight dressing rooms, a snack bar, first aid, referee and service rooms.



One popular program operated by the Etobicoke Parks and Recreation Services Department at Centennial Arena is the Summer Hockey School which draws up to 1000 boys from 7-14 years of age each season. The Hockey School, instructed by college and junior hockey players, stresses the aims and objectives of Amateur Hockey and provides practical instruction in fundamental skills of skating, stickhandling, passing, shooting and checking. The underlying goal for each participant however, is that of experiencing fun and enjoyment through participation.



Etobicoke Olympium

The Etobicoke Olympium was designed and constructed in 1975 to serve the recreational, cultural, social and athletic needs of the Borough, ranging from international sporting events to concerts, conventions and theatrical productions. Organizers of major events recognize and appreciate the comprehensive nature of the Olympium's functional design. It includes a double gymnasium/auditorium, 50 metre pool, therapeutic pool, 10 metre diving tower, spectator capacity of up to 2500, cafeteria and lounge, multi-purpose meeting rooms, a full complement of service facilities including weight training and therapy rooms, press gallery and extensive parking. A wide range of programs in aquatics and gymnastics are made available to community users of every age group. Emphasis is on participation rather than competition with the objective being, improvement of individual fitness levels at each participant's pace in comfortable attractive surroundings.

The Etobicoke Olympium is operated by a Management Committee composed of three Members of Council and five citizens, and is responsible directly to the Council of the Borough of Etobicoke. It is not connected with the facility operation of Centennial Park as a whole. Detailed information on facilities and rental is available from the General Manager.



Summer Programs

In addition to the many scheduled and non-scheduled sports activities that take place in Centennial Park, some other rather unique programs operated by the Parks and Recreation Department are found there during the summer months.

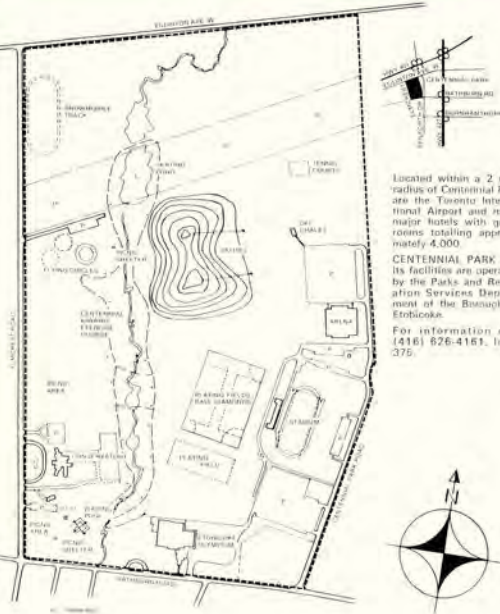
SENIOR DAY CAMP for retarded children and teens and **CAMP NEW HORIZONS** for physically handicapped children are two of the specialized summer day camps whose sites have been located on the west side of the Park. This valley area has provided an ideally sheltered and shaded area for campers who are supervised by specially trained leaders. Centennial Park is an ideal location for such camps, since it is easily accessible in case of emergencies, centrally located to serve the entire Borough, and close enough to community facilities that campers can go on excursions and learn how to become more involved in the community.



SUMMER FOR SENIORS is another unique program begun as a pilot project in 1975. It was conceived by a group of Senior Citizens as an opportunity for senior citizens of Etobicoke to enjoy the warm summer days out of doors where they could take part in any number of activities ranging from just sitting in a shady area chatting, playing chess, cards and other quiet games to more active things like croquet, miniature golf, etc.

The summer "day camp" is centred around the recreation centre where the group can utilize the main level of the building if it is too hot or rainy outside. Future plans are to eventually include physically handicapped adults in the summer programs at Centennial Park.

Centennial Park Facilities

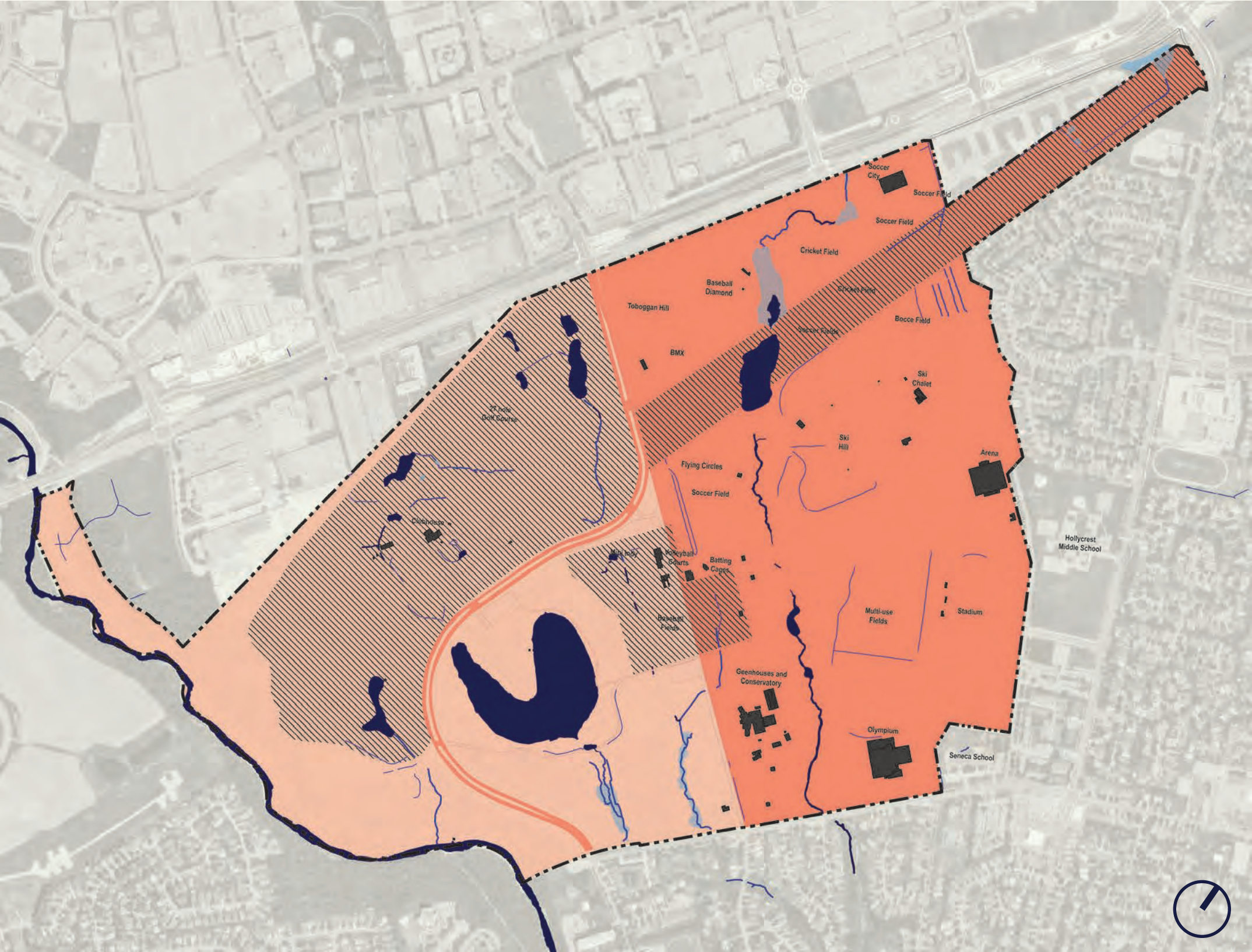


Located within a 2 mile radius of Centennial Park are the Toronto International Airport and many major hotels with guest rooms totalling approximately 4,000.

CENTENNIAL PARK and its facilities are operated by the Parks and Recreation Services Department of the Borough of Etobicoke.

For information call (416) 626-4161, local 375.

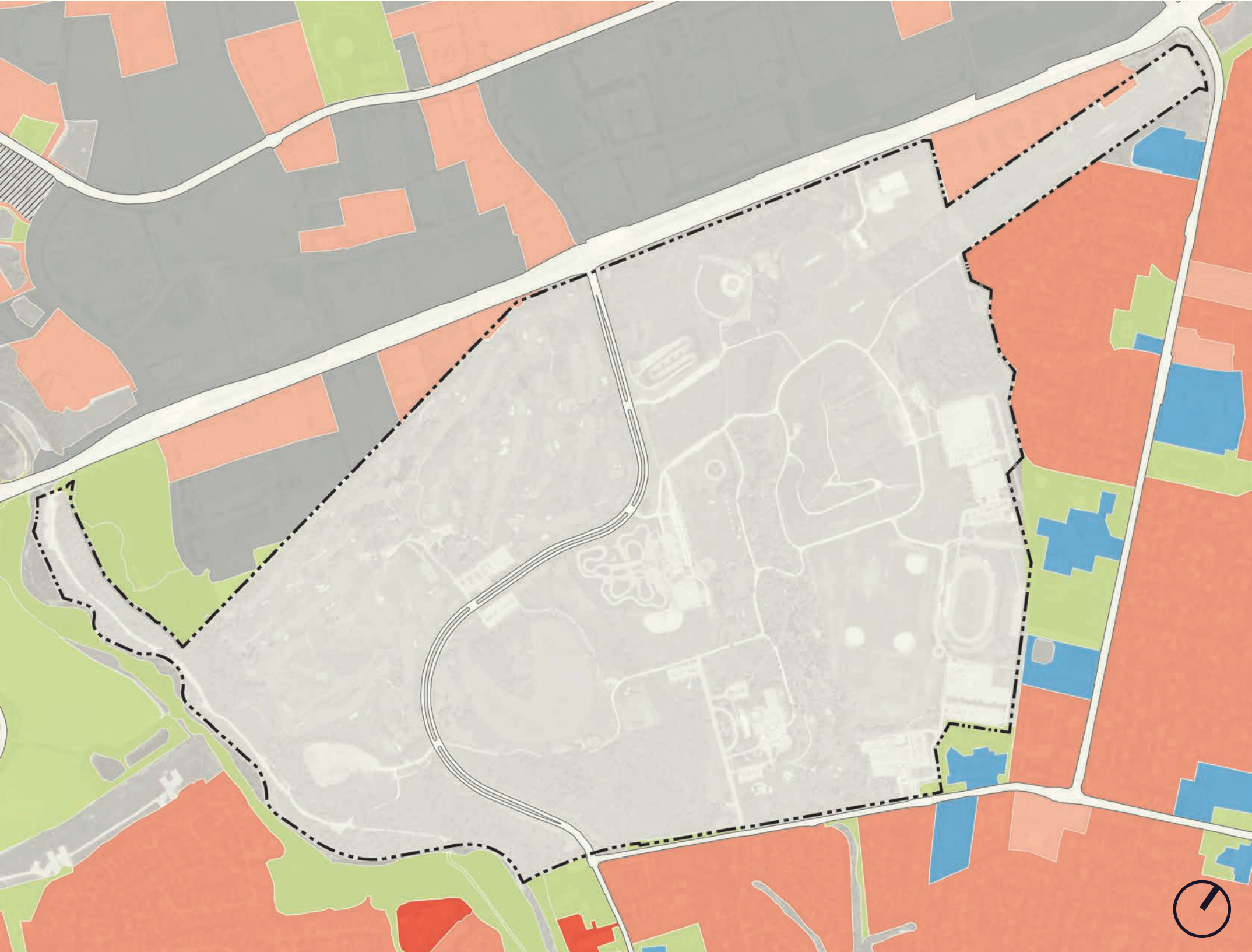
OWNERSHIP + LEASING



LEGEND

- Project Boundary
- Provincially Owned Lands, Leased by City
- City Owned Lands
- Leased / Easement Lands

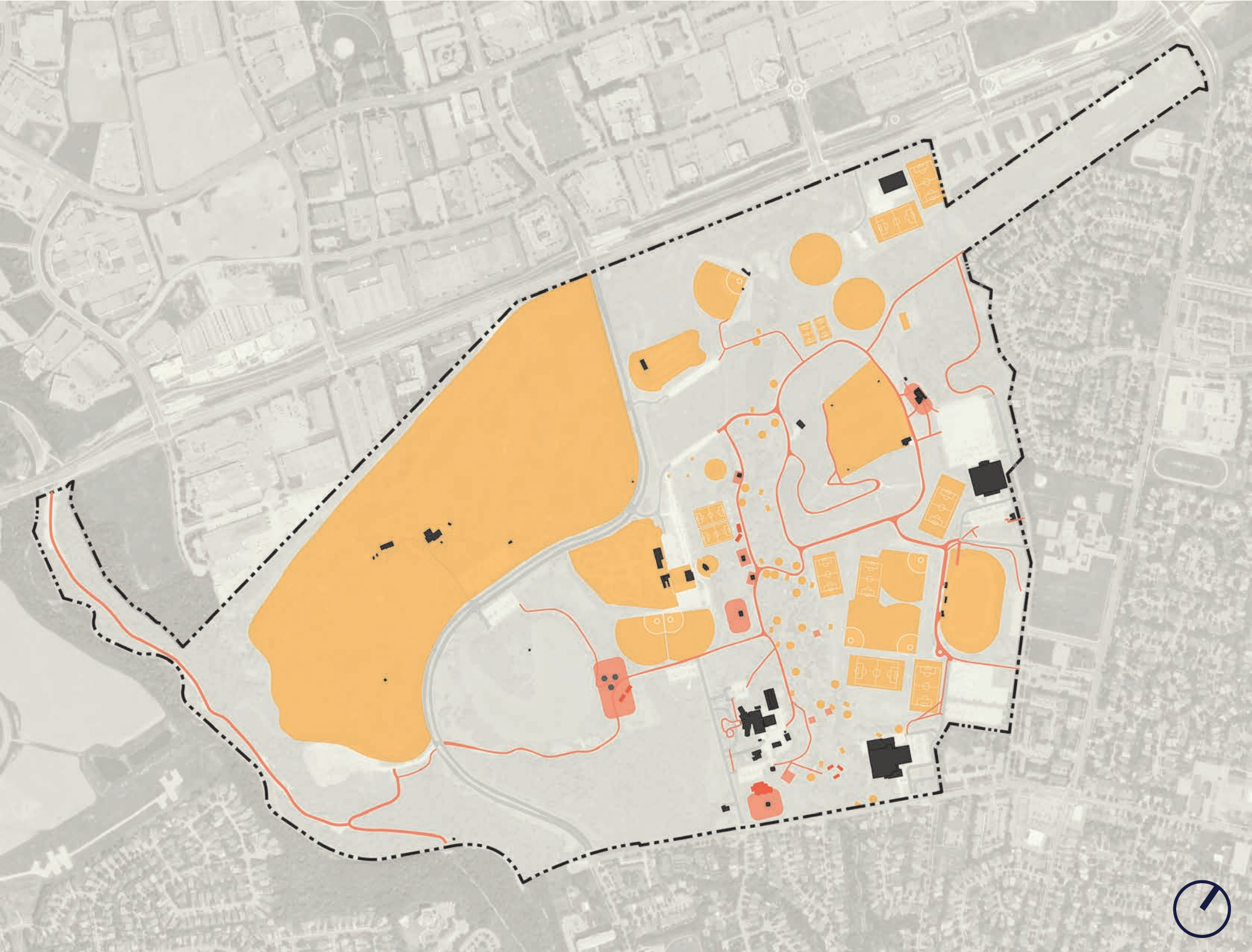
ADJACENT LAND USE






LEGEND

- Project Boundary
- High Density Residential
- Medium Density Residential
- Commercial
- Institutional
- Light Industrial
- Green Open Space
- Vacant Land

INVENTORY OF PROGRAMMING



LEGEND

-  Project Boundary
-  Passive Uses (Playground / Picnic)
-  Active Uses

Precedents & INSPIRATION

MASTERPLANS



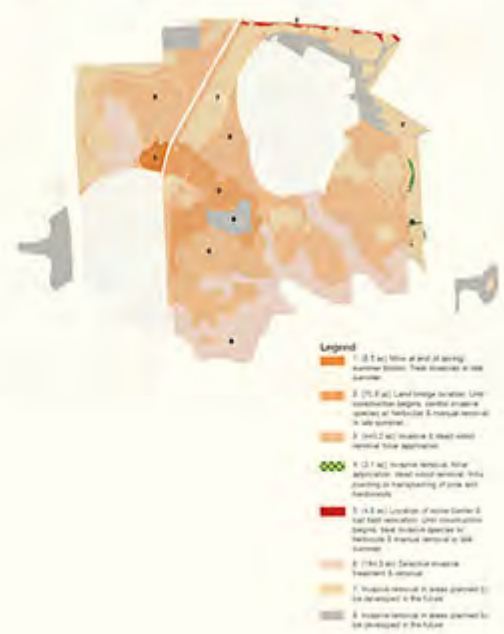
MEMORIAL PARK, HOUSTON
(NBWLA, 2015)

MASTERPLANS

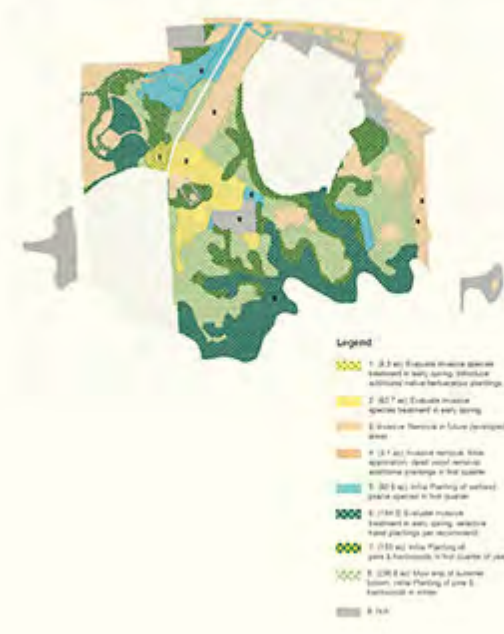
2014 EXISTING ECOLOGICAL HABITAT TYPES



2015 ECOLOGICAL MANAGEMENT RECOMMENDATIONS:
Targeted invasive management



2016 ECOLOGICAL MANAGEMENT RECOMMENDATIONS
Targeted invasive management



2017 ECOLOGICAL MANAGEMENT RECOMMENDATIONS
Targeted invasive management



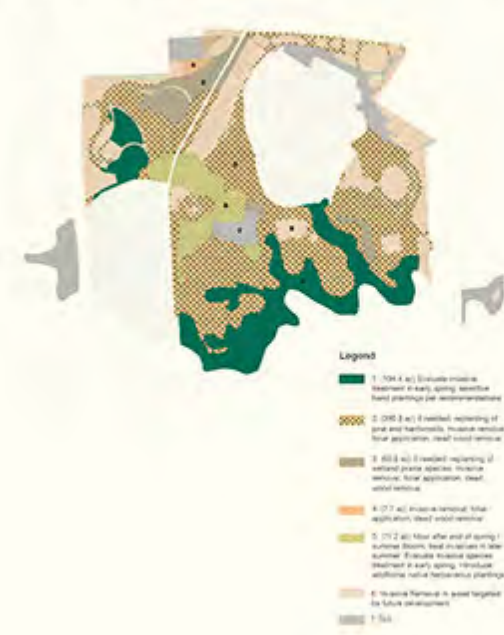
2018 ECOLOGICAL MANAGEMENT RECOMMENDATIONS
Targeted invasive management



2019-2021 ECOLOGICAL MANAGEMENT RECOMMENDATIONS
Targeted invasive management



2022-2024 ECOLOGICAL MANAGEMENT RECOMMENDATIONS
Targeted invasive management



2026 AND BEYOND ECOLOGICAL HABITAT GOAL



MEMORIAL PARK, HOUSTON
(NBWLA, 2015)

MASTERPLANS

**MEMORIAL PARK, HOUSTON
(NBWLA, 2015)**



MASTERPLANS



**MEMORIAL PARK, HOUSTON
(NBWLA, 2015)**

MASTERPLANS



MEMORIAL PARK, HOUSTON
(NBWLA, 2015)



DESIGN FOR
PROSPECT PARK
IN
THE CITY OF BROOKLYN.

1870



ESTABLISHED CITY PARK

**PROSPECT PARK, BROOKLYN
(Olmsted & Vaux, 1865)**



ESTABLISHED CITY PARK



PROSPECT PARK, BROOKLYN
(Olmsted & Vaux, 1865)



ESTABLISHED CITY PARK

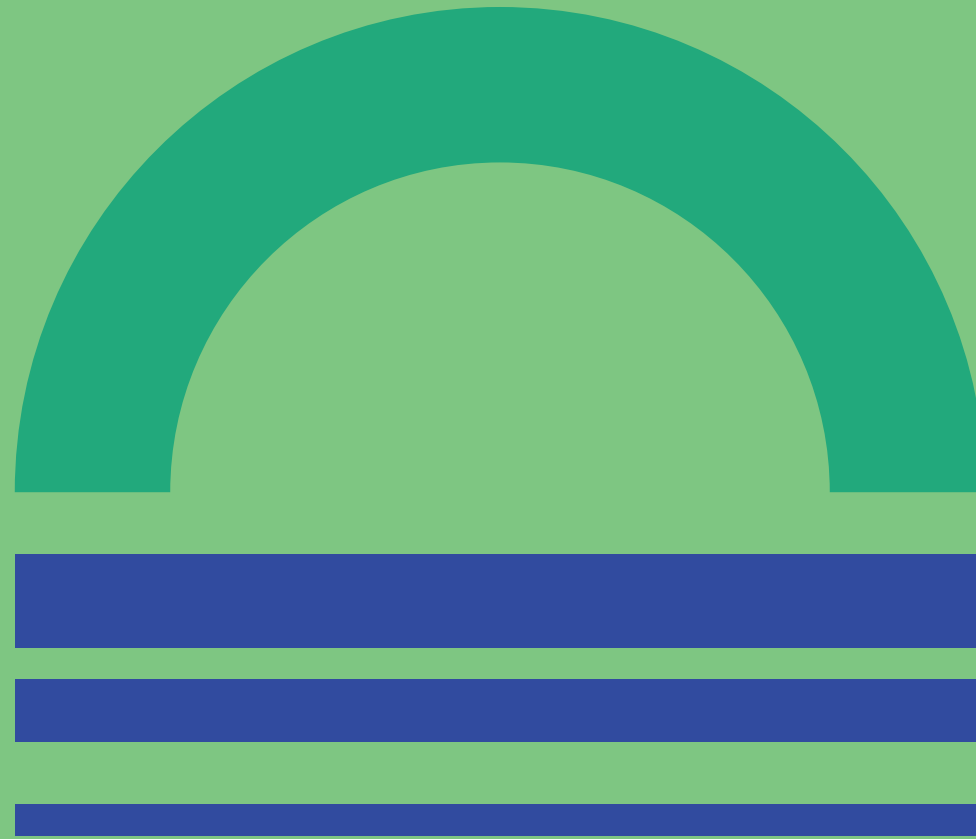
**PROSPECT PARK, BROOKLYN
(Olmsted & Vaux, 1865)**



ESTABLISHED CITY PARK

**PROSPECT PARK, BROOKLYN
(Olmsted & Vaux, 1865)**





**Centennial
Park**

Next Steps

WAYS TO OFFER FEEDBACK

SAC and Public Workshops

Worksheets

Email Comments

CentennialPark@toronto.ca

Online Consultation

(to be launched March 2020, refer to website)

Public Life Study

(look out for surveyors in the park)

Jane's Walk

(details forthcoming, refer to website)

