

Towers & Flowers:

Exploring the Green Line
through the power of electricity
and the power of nature

How to use this Activity Book

This Towers and Flowers activity book was created for the Geary Avenue Park expansion project, which is part of a much bigger project called the Green Line! This book has interesting facts about the Green Line and fun activities for you to do!

Read the facts in the activity book, visit the Green Line in person or virtually using the QR codes, complete the activities and share your ideas!

Sharing

Share your ideas by taking a picture of the activities on Pages 8 and 11 and sending them to **afurneaux@lura.ca**. Your feedback will help us design the new park space!

Printing

You can view this activity book online, or print it. You can print all the pages in the workbook or just the activity pages (pages 6, 7, 8 and 12). This book can be printed in black and white or colour.

Information will be collected in accordance with the Municipal Freedom of Information and Protection and Privacy Act. With the exception of personal information, all comments will become part of the public record.

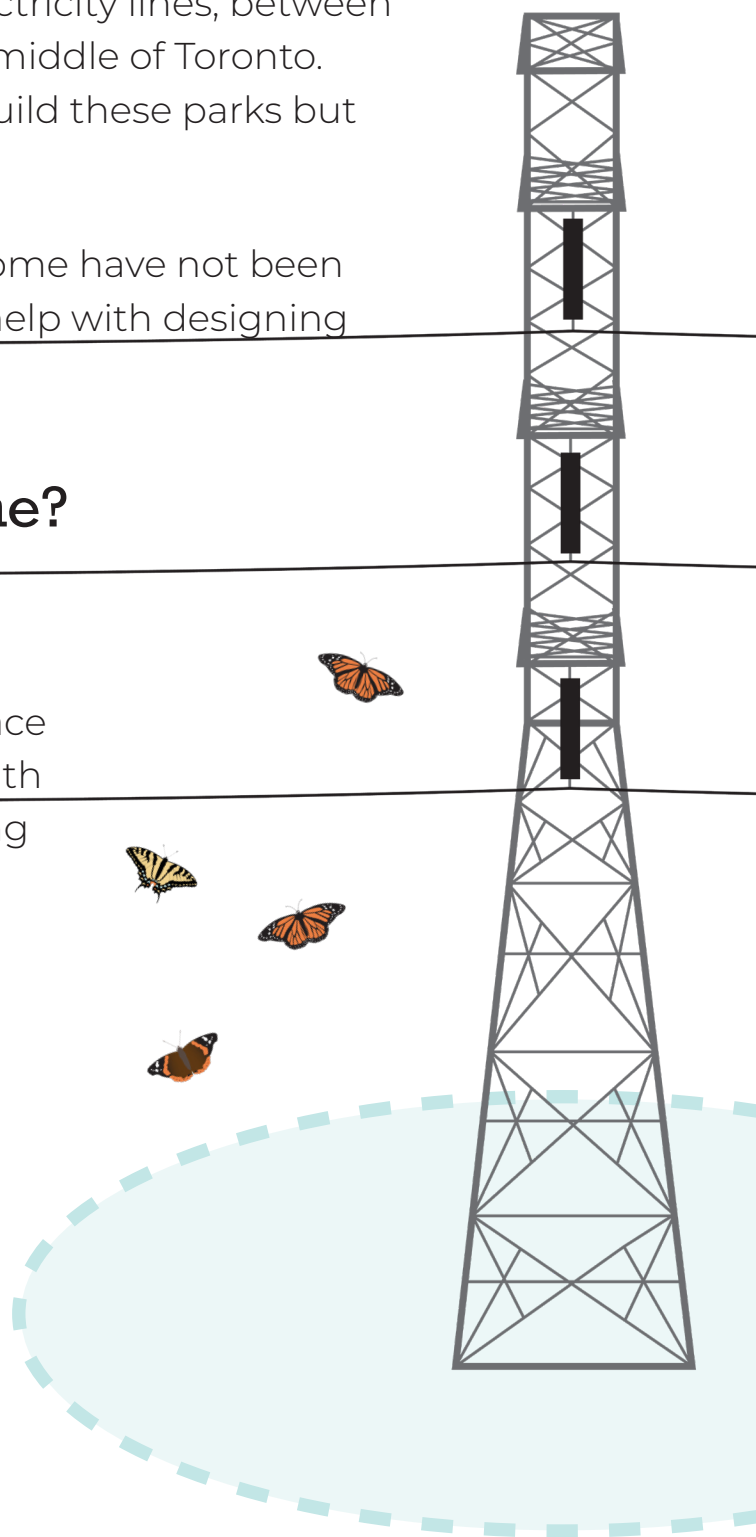
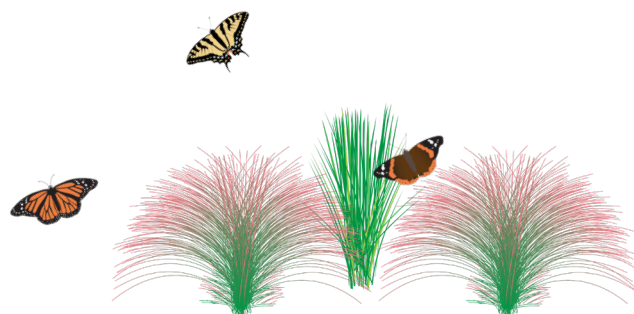
What is the Green Line?

The Green Line is a network of connected parks, that is being created in a hydro corridor, beneath electricity lines, between hydro towers, that stretches across the middle of Toronto. The City of Toronto is working hard to build these parks but they need your help!

Some of these parks already exist but some have not been built yet. That's why we are looking for help with designing one of them now!

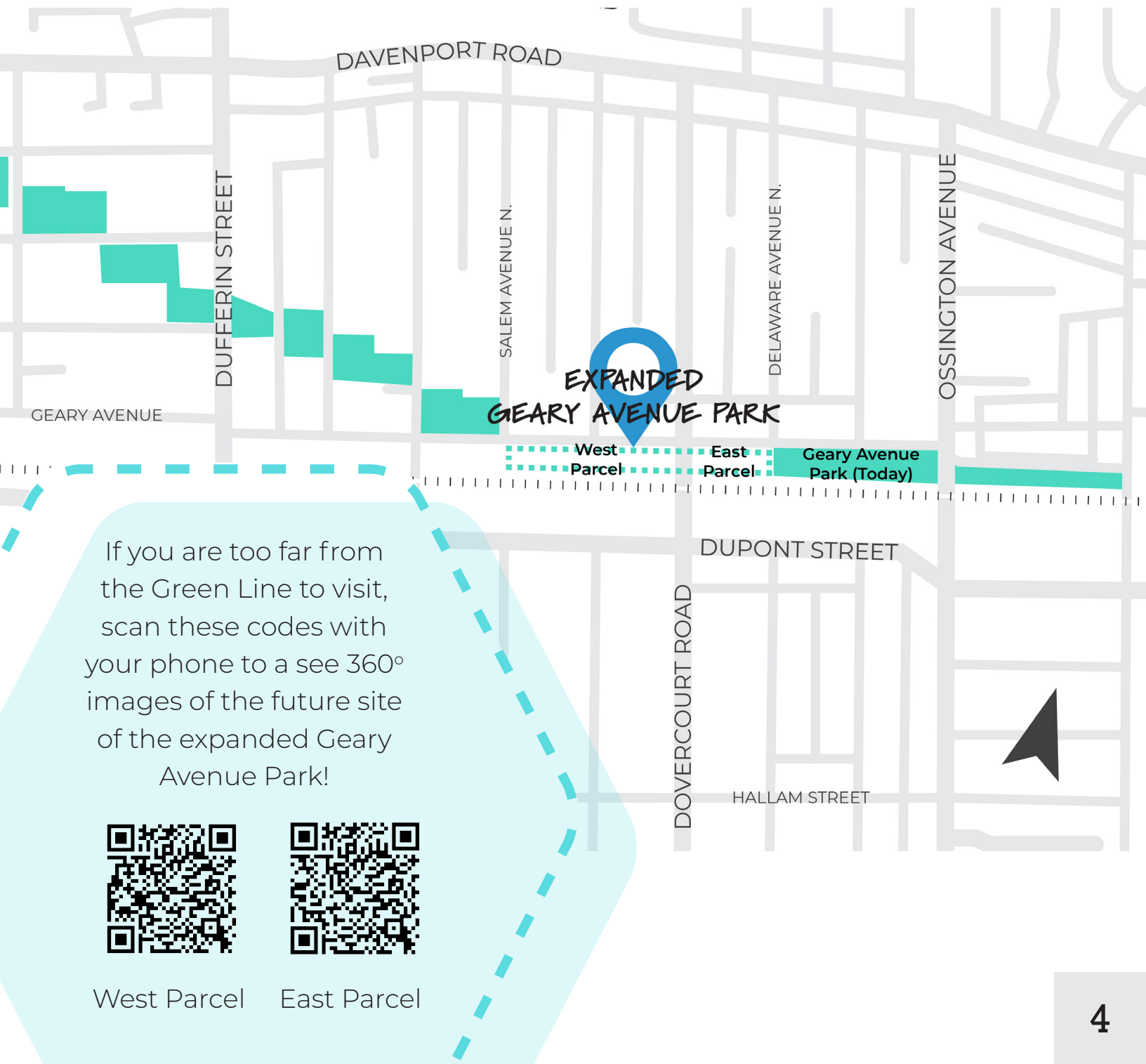
What will this space become?

The Dupont Hydro Corridor connects people with electricity every day. Over time, the corridor will also become a place for people and pollinators to connect with neighbourhoods and nature. Connecting landscapes is an important part of keeping people and the many species that call Toronto home healthy!



FAMILY-FRIENDLY ACTIVITY!

You can visit the Green Line today! Consider going on a walk to see what Geary Avenue Park looks like today. This will help you complete the other activities in this booklet.



If you are too far from the Green Line to visit, scan these codes with your phone to see 360° images of the future site of the expanded Geary Avenue Park!



West Parcel



East Parcel

The Green Line is for Pollinators!



Wait, what is a pollinator?

Pollinators are birds, insects and mammals that collect pollen and nectar from plants to feed themselves and their young. They move from one plant to another, which fertilizes the plants and allows them to produce seeds, fruits, and new plants.



How does the Green Line help Pollinators?

Hydro corridors are ideal locations to create connected meadow habitats, full of native plants, for pollinators. This allows the pollinators to move freely from one area to another and provides them with homes and food.



Did you know?

Toronto is home to over 360 species of native bees and 112 species of butterflies! Parks like the Geary Avenue Park provide a home and food for these pollinators helping them live comfortably in cities.

Interested in learning more?
Download the **Toronto Pollinator Protection Strategy!**

FAMILY-FRIENDLY ACTIVITY

Meadows are so full of pollinators and native plants it's often hard to find them. Can you find the pollinators and plants listed below in the word search?



T	M	D	S	S	N	T	N	A	L	P	P	U	C	R
M	I	N	T	O	C	S	P	W	G	L	M	W	B	E
O	L	I	K	A	E	W	S	I	L	A	E	D	L	W
N	K	A	A	E	B	A	W	L	E	R	M	E	U	O
A	W	T	A	A	E	L	S	D	E	I	S	E	E	L
R	E	T	B	E	A	L	U	B	P	M	W	B	S	F
C	E	L	D	S	L	O	O	E	L	D	E	E	T	N
H	D	D	T	E	A	W	E	R	S	A	A	L	E	U
W	T	E	O	T	M	T	U	G	W	D	T	B	M	S
O	R	R	B	W	E	A	D	A	K	E	B	M	W	E
E	S	C	S	O	A	I	R	M	H	R	E	U	T	S
B	M	L	H	M	T	L	E	O	S	O	E	B	T	L
W	E	W	N	B	E	E	A	T	T	E	T	P	D	A
R	S	S	A	R	G	H	C	T	I	W	S	L	L	F
P	Q	I	E	E	A	L	W	P	S	R	D	O	W	I



Pollinators:

Sweat Bee
Red Admiral
Monarch
Swallowtail
Bumblebee

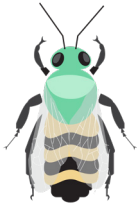
Plants you might find in the Green Line:

Milkweed
False Sunflower
Bluestem
Switch Grass

Cup Plant
Wild Bergamot
Aster

FAMILY-FRIENDLY ACTIVITY

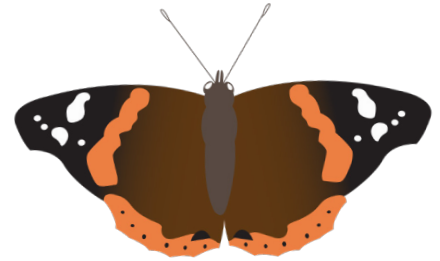
See if you can find any of these pollinators or plants the next time you are outside!



Sweat Bee



Bumblebee



Red Admiral Butterfly



Monarch Butterfly



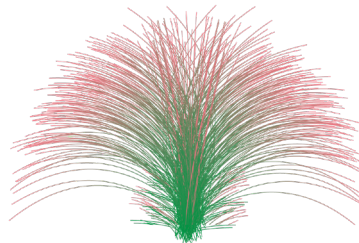
Swallowtail Butterfly



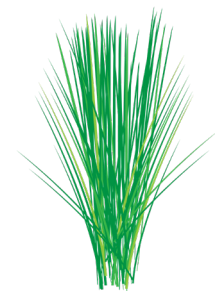
Milkweed



False Sunflower



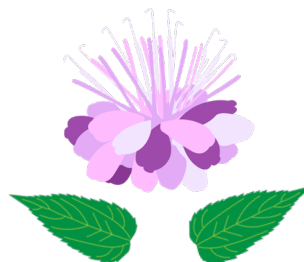
Bluestem Grass



Switch Grass



Cup Plant



Wild Bergamot



Aster

The Green Line is for People!

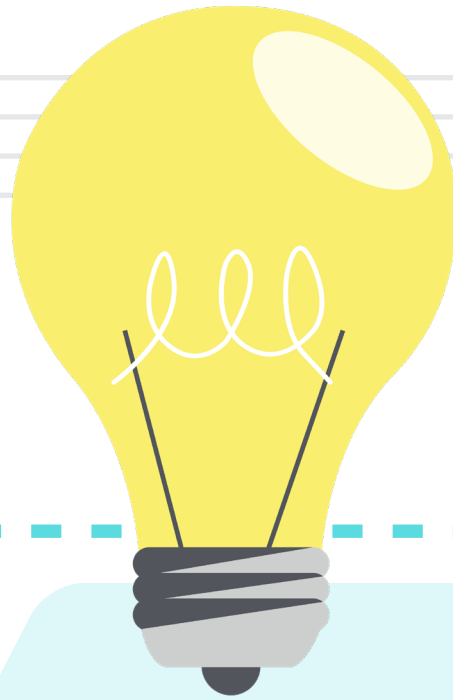
FAMILY-FRIENDLY ACTIVITY

Share your input to help shape Geary Avenue Park! Geary Avenue Park will be a place for different activities on the pathways, lawns, meadows, and other park areas. How will you use the new park? Draw a picture of how you would use the expanded Geary Avenue Park. Take a picture and send it to afurneaux@lura.ca.



#GreenLineTO

Tell us what is happening in your picture.



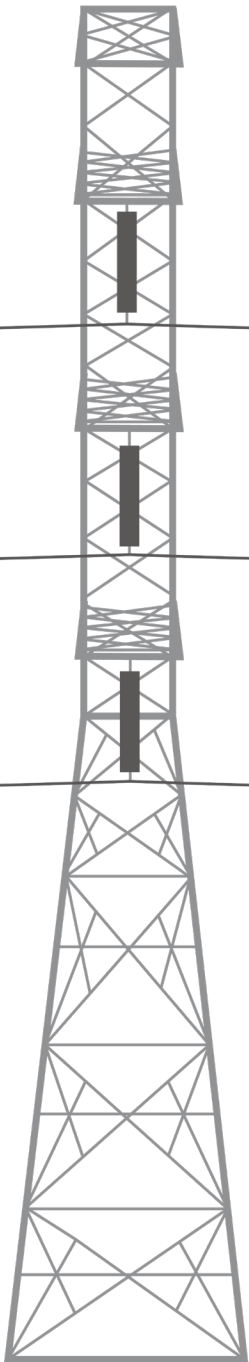
Fun Tip!

Check out the maps online to see what the new park might look like, and tell us how you would use the park and who you would visit with.



toronto.ca/greenline

Turning on the Lights about Hydro in Toronto

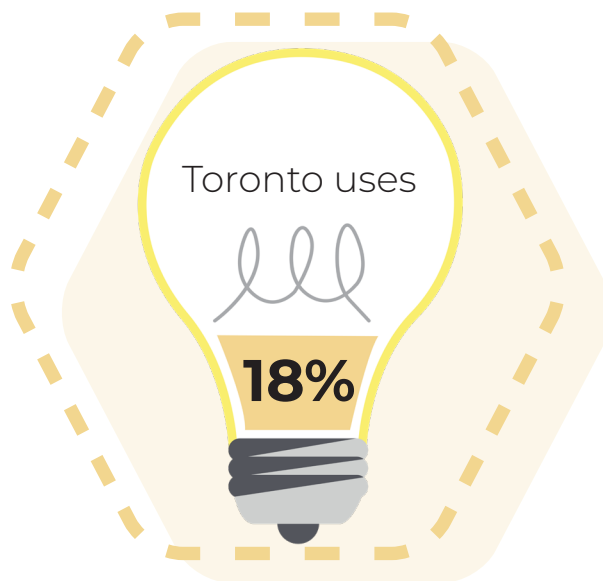


What do those towers do?

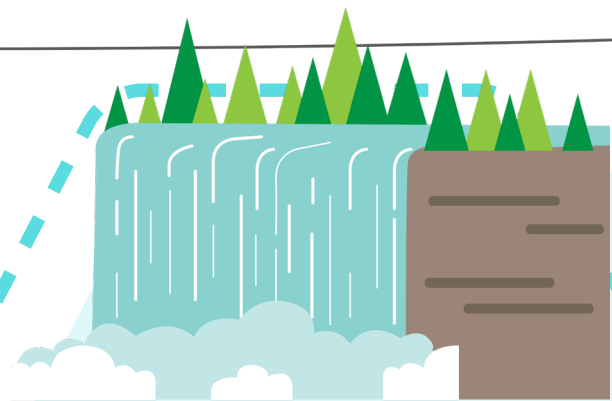
The towers that can be found on the Green Line hold wires that carry electricity from power stations to homes and work places across the City.

It's important that these towers can be checked and fixed when needed so there needs to be space left around the bottom of the tower.

Did you know?



of all the electricity
in Ontario



The Dupont Hydro Corridor has brought electricity generated at Niagara Falls to Toronto for over 100 years!

FAMILY-FRIENDLY ACTIVITY

The Green Line will create a path connecting different parks across neighbourhoods of diverse peoples, with different stories. Art is one way to tell these stories about connections to where people live and could be added to this path. What story or drawing do you think would be fun to have on the path in your neighbourhood? Draw a picture in the space below, take a picture, and share it to **afurneaux@lura.ca**.

TEST IT IN REAL LIFE! This activity can also be done with chalk on a sidewalk or driveway!

#GreenLineTO



Other Ways to Get Involved

Did you have fun completing this activity book? The City of Toronto would like to know what you created in this workbook.

Share your feedback by emailing a picture of Pages 8 and 12 to:

Alexander Furneaux, Community Engagement Coordinator, LURA Consulting

Email: **afurneaux@lura.ca**

LURA Consulting is supporting the City of Toronto's engagement and consultation process for Geary Avenue Park.

You can also get involved in the project by visiting the project website and completing some questions at **www.toronto.ca/greengriline**.

For more information contact:

Nancy Chater, Senior Project Coordinator – Parks, Forestry and Recreation, City of Toronto, Capital Projects

Phone: 416- 338-5237

Email: **nancy.chater@toronto.ca**