

# ONLINE / TELEPHONE INFORMATION SESSION

## ROEHAMPTON RESIDENCE AND 55/65 BROADWAY AVENUE

Wednesday, August 19, 2020

6:00pm to 8:00pm



# PURPOSE & AGENDA FOR TODAY'S DISCUSSION



## Purpose

- Provide a **status update** on the **City's COVID-19 Response** for people experiencing homelessness.
- Provide an **overview** of the **Roehampton Residence** and **enhanced supports** currently enacted and planned for the site.
- Respond to **questions and concerns** from the community.

## Agenda Items

1. Welcome Remarks	45 Mins
2. Presentation on the Roehampton Residence Program	
3. Q&A and Feedback	70 Mins
4. Closing and Wrap Up	5 Mins

# Welcome Remarks

*Facilitated by Yulia Pak*

*Community Engagement Facilitator, Swerhun Inc.*



# Program Overview of Roehampton Residence and 55/65 Broadway Avenue

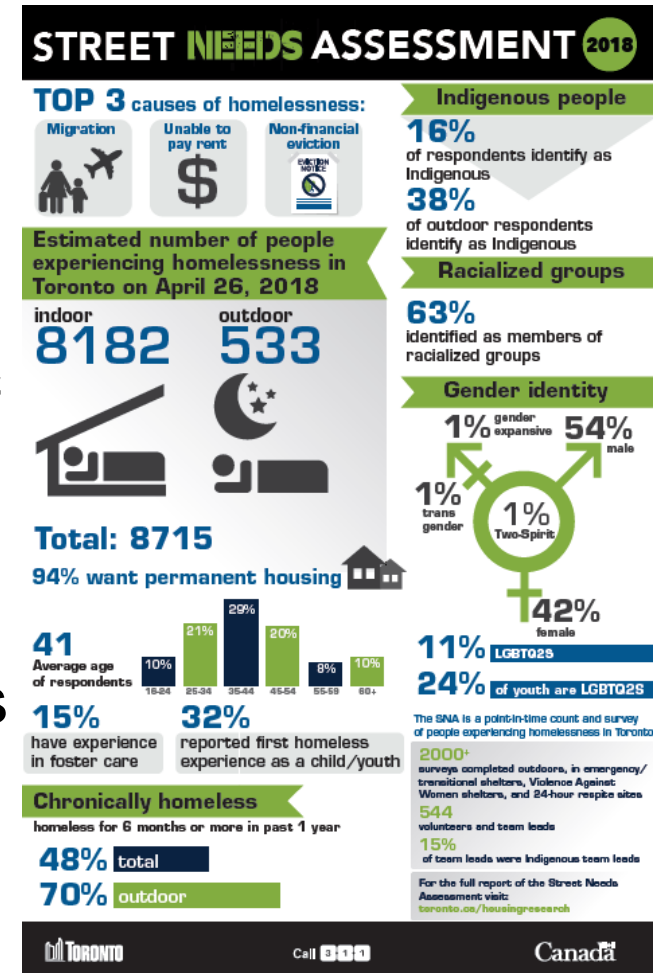
*Mary-Anne Bédard, General Manager,  
Shelter, Support and Housing Administration*



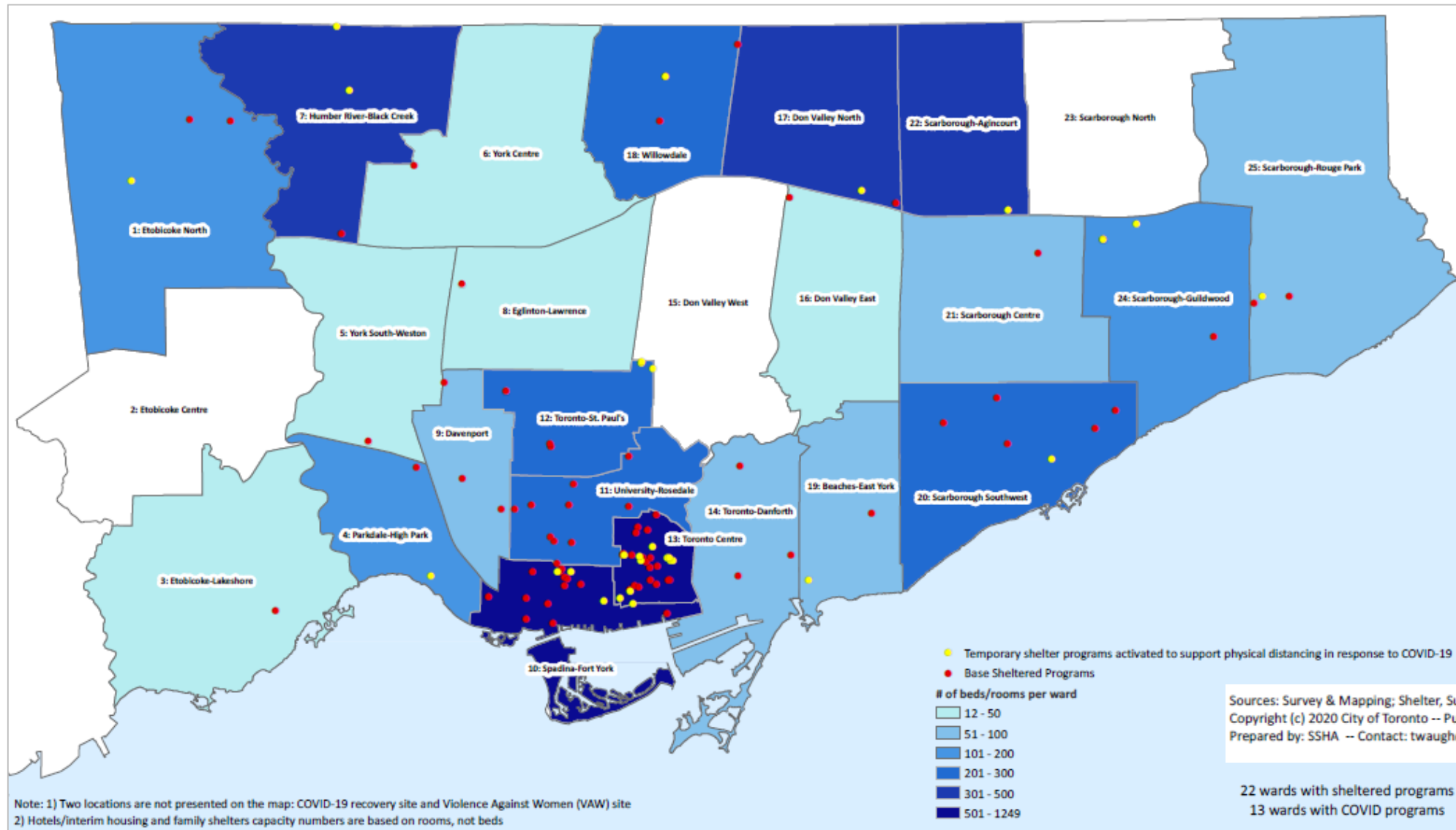
# Context of Homelessness in Toronto



- Each night there are an estimated 8,715 people in Toronto who are homeless – 533 sleeping outdoors (2018 Street Needs Assessment).
- Use of the City-funded shelter system is on the rise with more demand and people staying in shelters longer (roughly 48% of total considered chronically homeless (i.e.) homeless for 6 months or more in past 1 year).
- Compounded by opioid crisis with the highest recorded deaths in the month of July and pressures on the shelter system exacerbated due to COVID-19.

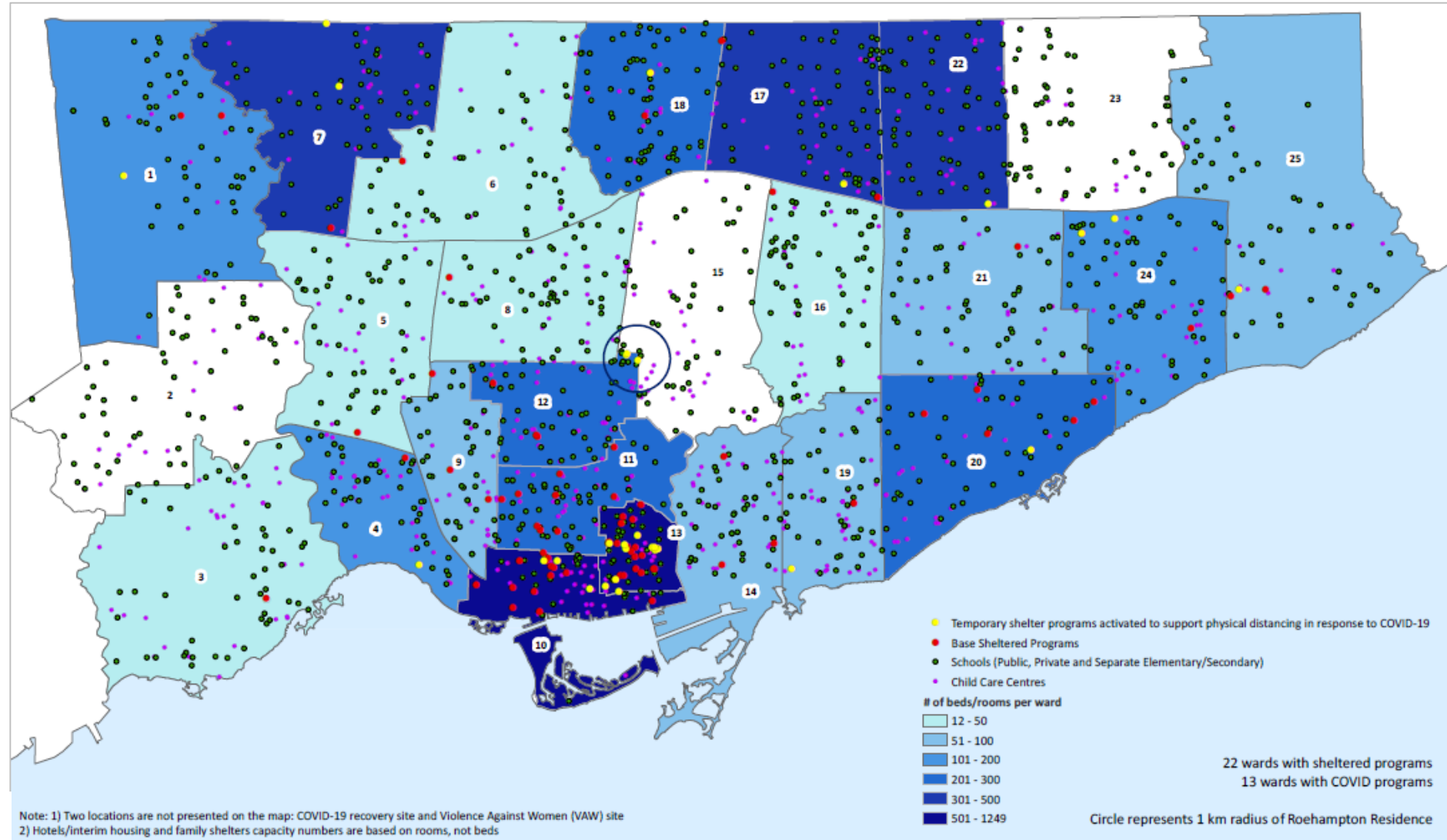


# Shelter System by Ward



# Programs are located within communities

- Providing emergency shelter to people who are experiencing homelessness is an important community service that is offered in neighbourhoods across the city.



# Criteria for Selecting a Shelter Location



The City's goal is to open new shelters in neighbourhoods across Toronto so that people can stay within their communities.

Under normal circumstances, when searching for a new **shelter location**, staff will:



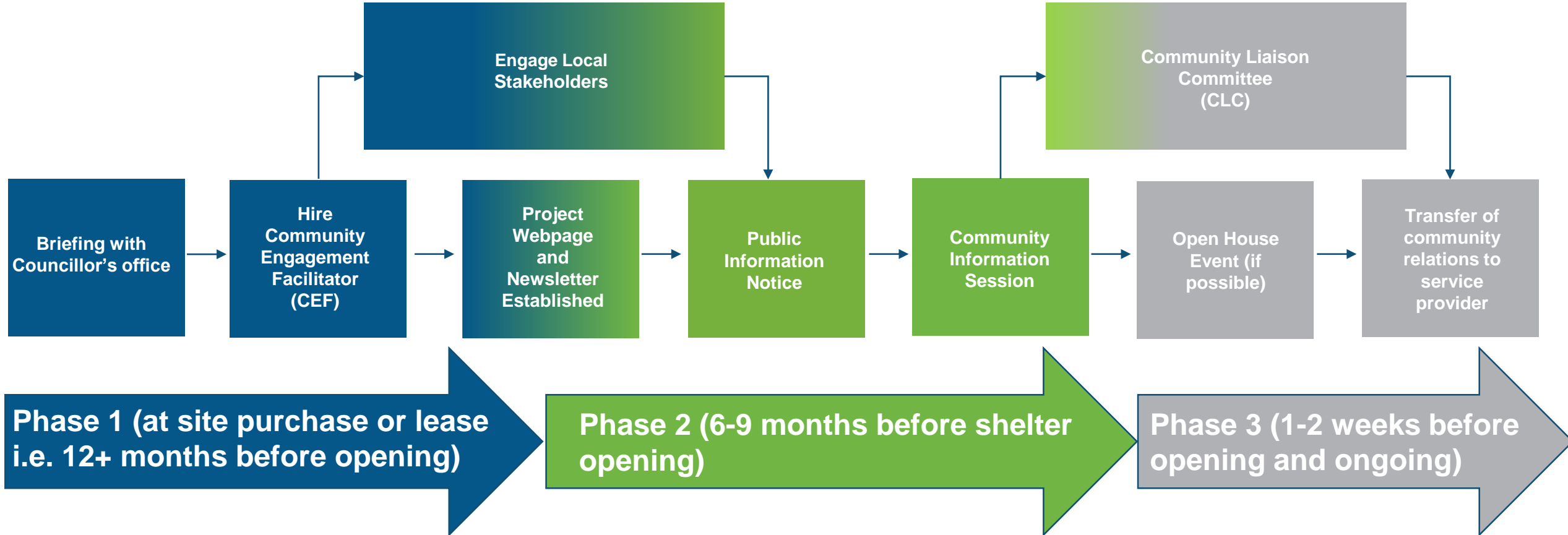
- Site shelters in locations that meet City by-laws (in locations that allow shelters as an as-of-right use)
- Support Toronto's Housing Charter – Opportunity for All (2017)
- Work with Real Estate Services Division to find feasible buildings and locations that are accessible and will provide adequate space
- Seek out sites that are in close proximity to community services (such as libraries, public parks, pharmacies, and health care services) and public transit





# Building a Welcoming Community

\*The process below is a guideline and is subject to modifications based on interdependent factors and site-specific circumstances



- After the City has selected a location for a new shelter, we would usually begin our community engagement process with the community 6-9 months before shelter opening with the goal of supporting the integration of the service in the neighbourhood.

# City's COVID-19 Response for People Experiencing Homelessness



**30<sup>+</sup>** new facilities  
opened



**700** people sleeping  
outdoors moved to  
interim housing units

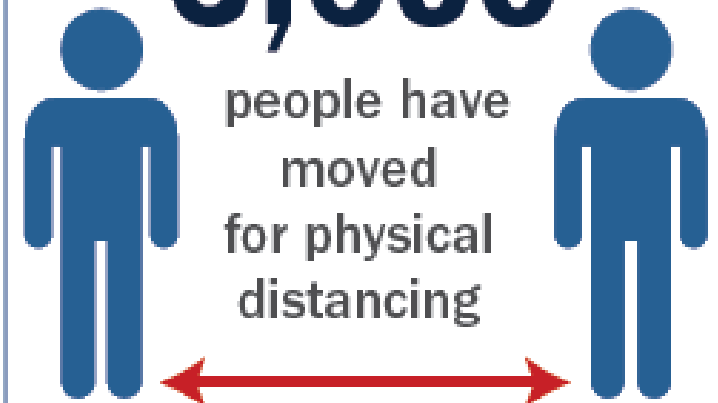
**1,960** people  
moved into hotels



**20** hotel locations are  
operational

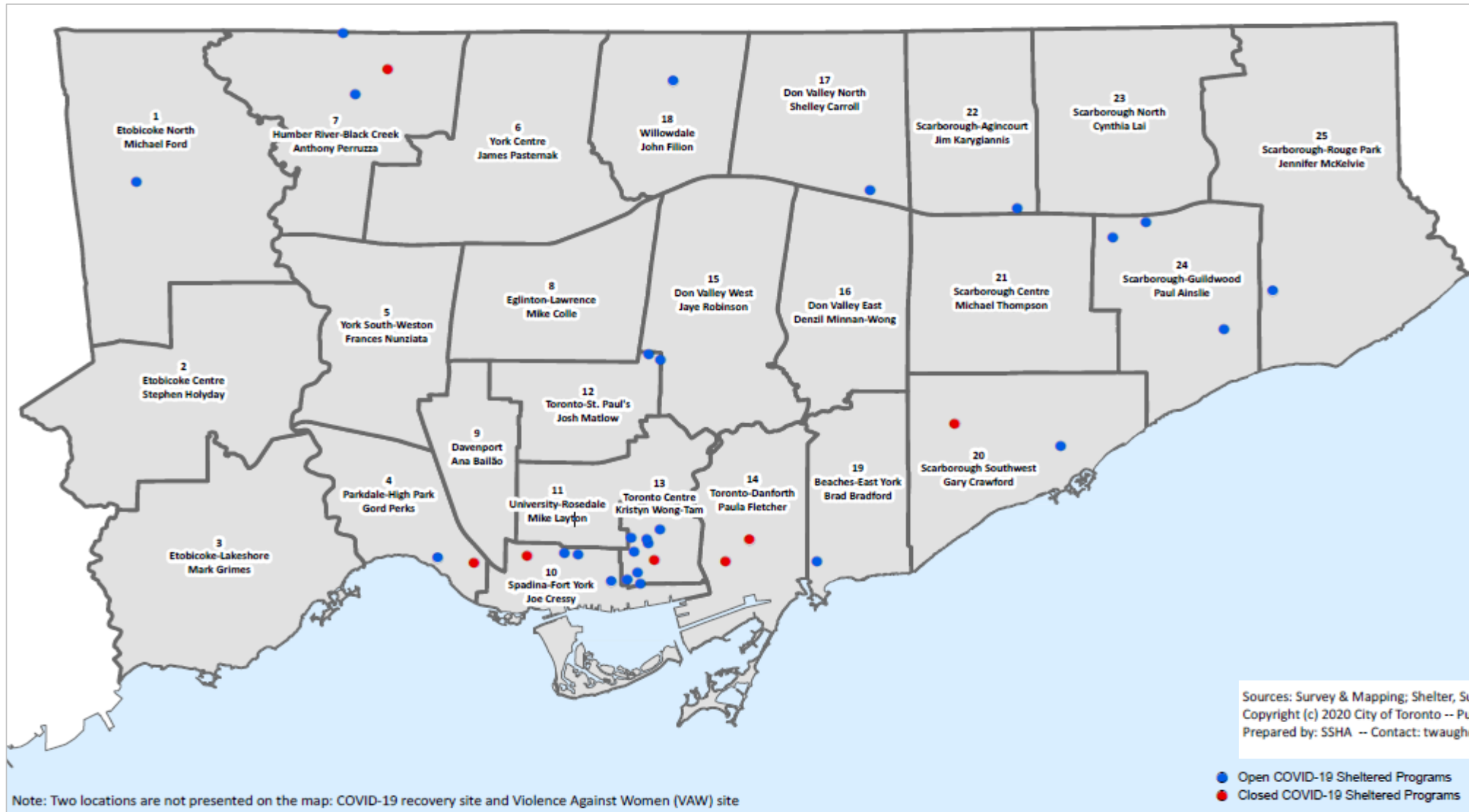
**3,600**

people have  
moved  
for physical  
distancing



2m

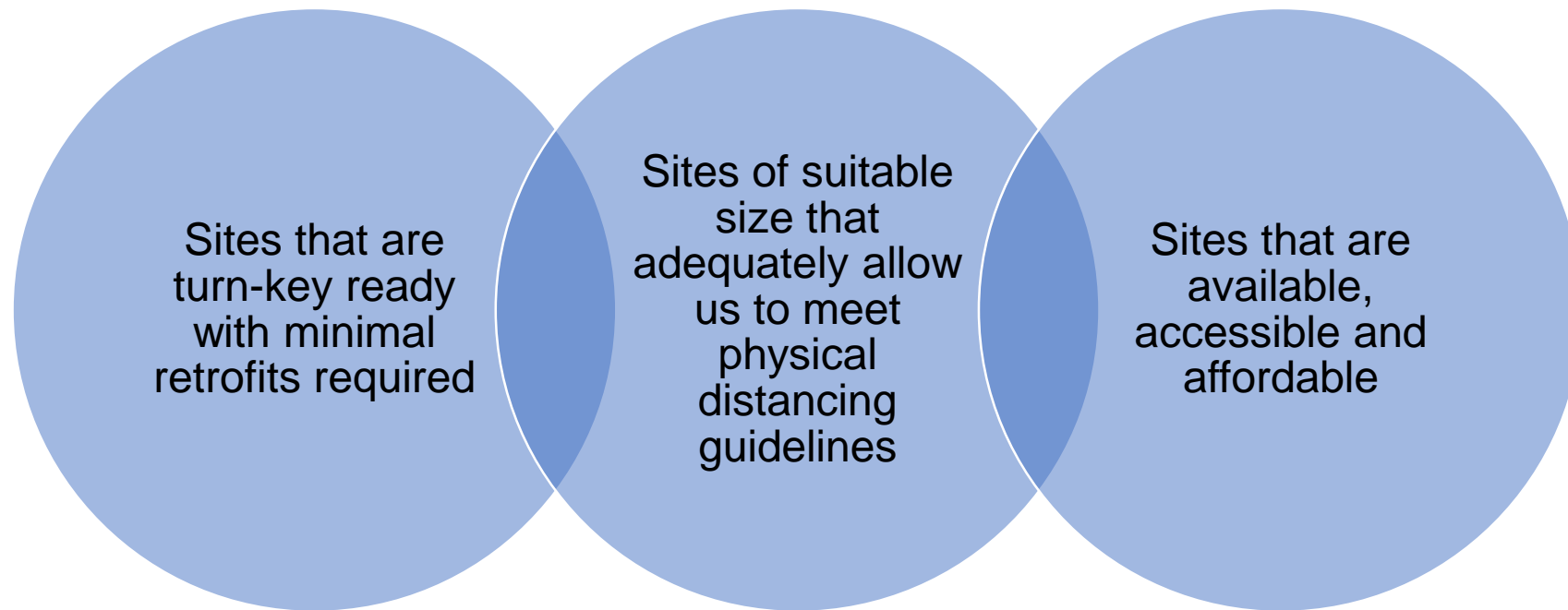
# Temporary Shelter Programs Activated in Response to COVID-19 by Ward



# Additional Criteria for Site Selection During COVID-19



During the pandemic, in addition to the criteria used when selecting a location for a new shelter, the City also looked for:



# How do Ward 12 & 15 compare?



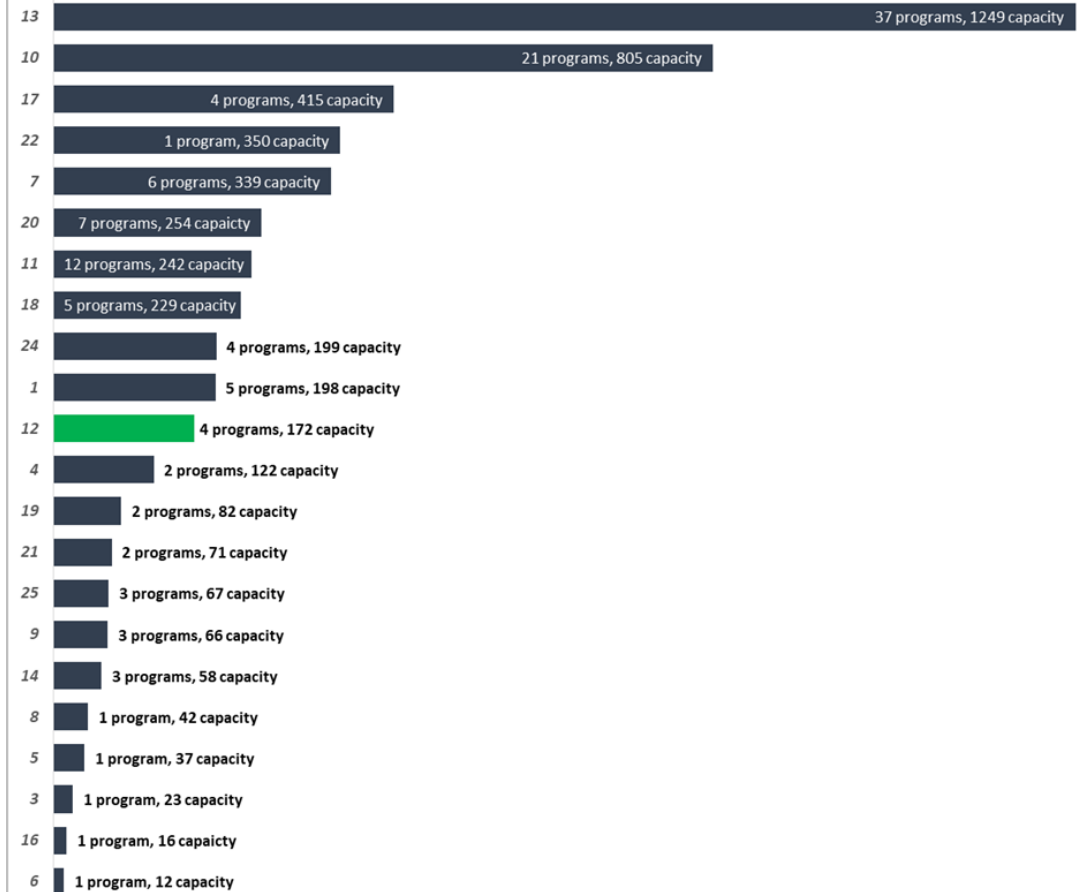
## Ward 12 Overview

- 5 shelter programs operational with 290 bed capacity.
- Ward 12 ranking compared to all wards across Toronto.

## Ward 15 Overview

- No shelter programs.

Ward ranking based on program numbers and bed/room capacity



# Community Engagement During COVID-19



- While an engagement process for the community in advance of a program opening is preferred, the rapid nature of the response and critical need to protect people experiencing homelessness during the pandemic did not allow for engagement before the shelter opened.
- Actions now underway:
  - Retained Community Engagement Facilitators
  - Small group and on-one-on community outreach
  - Tracking of community concerns – action and follow up
  - Regular community bulletins for updates and to answer community questions
  - Information Session (Aug. 19<sup>th</sup>) – today
  - Community Liaison Committee

# Broadway Avenue



- 55/65 Broadway Avenue is one of the City's interim housing programs opened at the end of April to clients as part of the City's three-tiered COVID-19 response.
- Designed to be temporary while units were vacant pending redevelopment it will close on **September 6, 2020**.
- Many people were successful in securing permanent housing.
- Anyone not moving to permanent housing will be offered a referral to available space across the shelter system.





# The Roehampton Residence



- The Roehampton Residence at 808 Mt Pleasant Rd. opened in early July to assist with meeting Toronto Public Health guidelines for physical distancing.
- Roehampton Residence Program is run by City staff and offers case management (assessment and referrals to community services/resources), housing search help, meals, harm reduction and recreational programming.





# Rights and Responsibilities



- People staying at Broadview and Roehampton are equal citizens of the city and have the same rights, freedoms and responsibilities as other residents of the city.
- The City maintains conduct expectations and rules must be followed by anyone staying in the programs
- Regular resident meetings are held to remind people of rules, policies and guidelines.



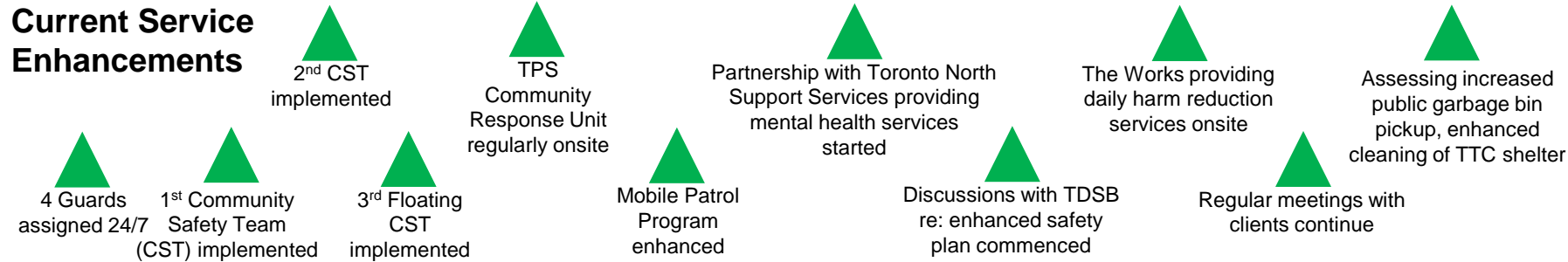
# Roehampton Timeline and Service Enhancements



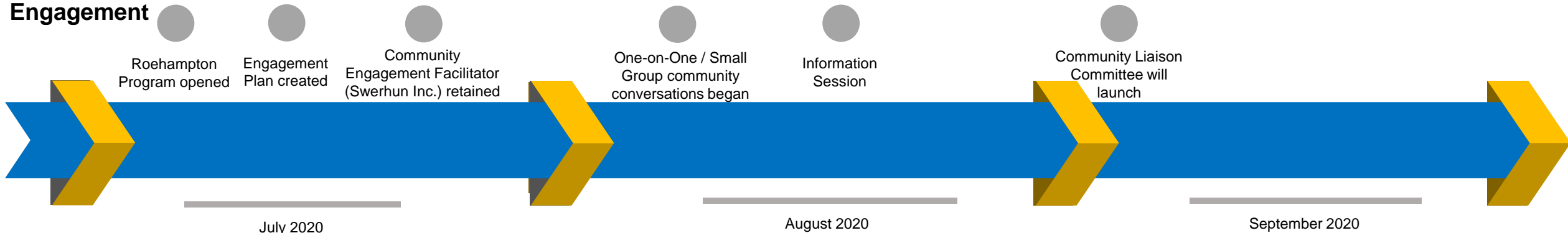
## Future Service Enhancement



## Current Service Enhancements



## Background / Engagement



# School Safety Plan



- City is working with local school partners and TDSB school trustees to develop and implement a school safety plan.
- Some steps have already been taken:
  - Cleaning of school premises and alleyways near Roehampton Residence (and 55/65 Broadway)
  - Community Safety Teams available 24/7 to respond to schools', day cares', and community requests
  - 24/7 security mobile patrol conducts proactive patrols of school properties





# Feedback and Questions

Voicemail: (416) 479-0243

Email: [clc.roehampton.residence@gmail.com](mailto:clc.roehampton.residence@gmail.com)

Website with online feedback form: [www.toronto.ca/physicaldistancingshelters](http://www.toronto.ca/physicaldistancingshelters)