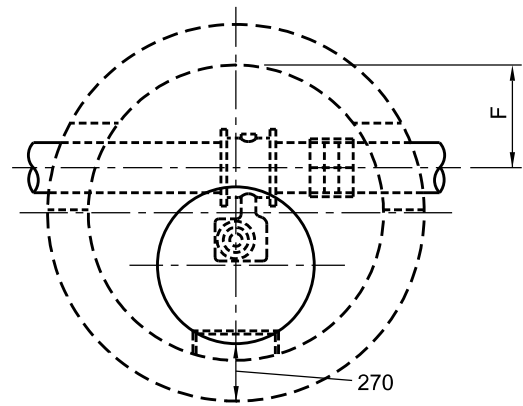
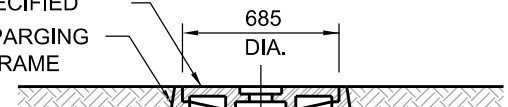


DIMENSION	100-250 mm WATER MAIN	300-400 mm WATER MAIN
A	1200	1500
B	127	150
C	400	550
D	600	750
E	900	1050
F	400	550
G	200	300
H	200	300



PLAN

FRAME & COVER AS SPECIFIED
15 mm PARGING OVER FRAME



MAX. 300mm OF BRICK OR PRECAST ADJUSTMENT UNITS

PRECAST CAP

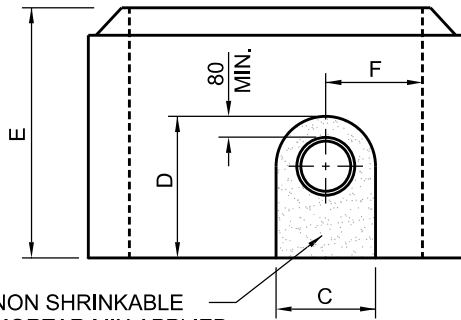
PRECAST RISER SECTION AS REQUIRED

PRESSURE SEAL GASKETS

PRECAST CHAMBER SECTION

FLEXIBLE SEALANT MATERIAL

MORTAR JOINT



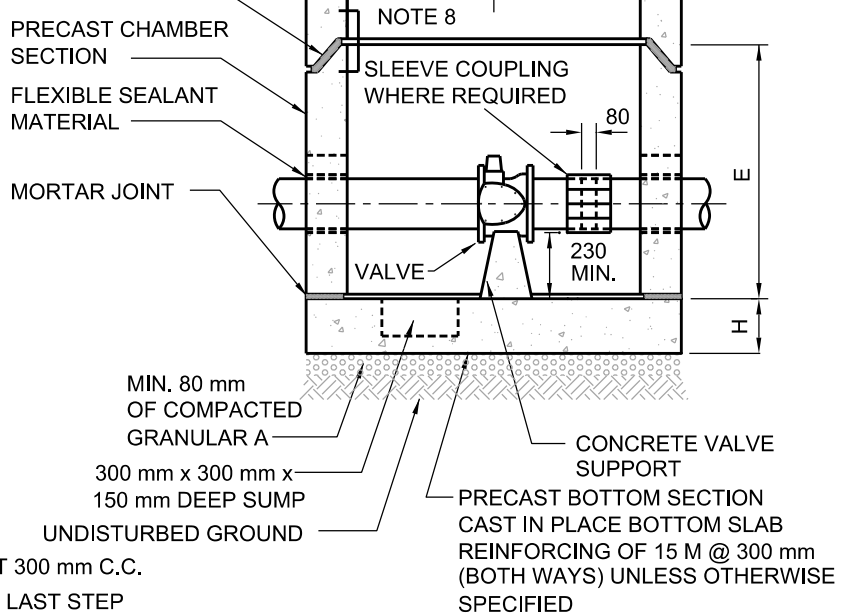
NON SHRINKABLE MORTAR MIX APPLIED WITH BONDING AGENT

WALL OPENING DETAIL

NOTES:

1. PRECAST SECTIONS TO BE MANUFACTURED TO ASTM C-478 SPECIFICATIONS.
2. BASE AND VALVE SUPPORT CONCRETE STRENGTH - 32 MPa.
3. ALL MORTAR TO BE 1:3 CEMENT & SAND MIX.
4. ALL JOINTS AND LIFT HOLES IN CHAMBER SECTIONS TO BE FILLED WITH MORTAR AND POINTED BEFORE BACKFILLING.
5. ALUMINUM STEPS AS PER DWG. No. OPSD 405.020 AT 300 mm C.C.
6. FIRST STEP TO BE 75 mm TO 300 mm BELOW FRAME. LAST STEP TO BE 300 mm ABOVE BENCHING OR 600 mm ABOVE INVERT IF NO BENCHING.
7. POLYETHYLENE BOND BREAKER TO BE USED BETWEEN CONCRETE AND FITTINGS.
8. ALL BRICKWORK (EXTERIOR) TO BE PARGED - 15 mm MIN.
9. PROVIDE FROST LUGS IF JOINT IS LESS THAN 1200 mm BELOW GRADE.

All dimensions are in millimetres unless otherwise shown.



CROSS - SECTION



ENGINEERING AND CONSTRUCTION SERVICES STANDARD DRAWING

REV 2

APR 2014

PRECAST BUTTERFLY VALVE CHAMBER
400 mm DIAMETER WATER MAINS AND SMALLER

T-1101.030-1

NTS

SHEET 1