

WHO IS A CLOSE CONTACT AT SCHOOL?

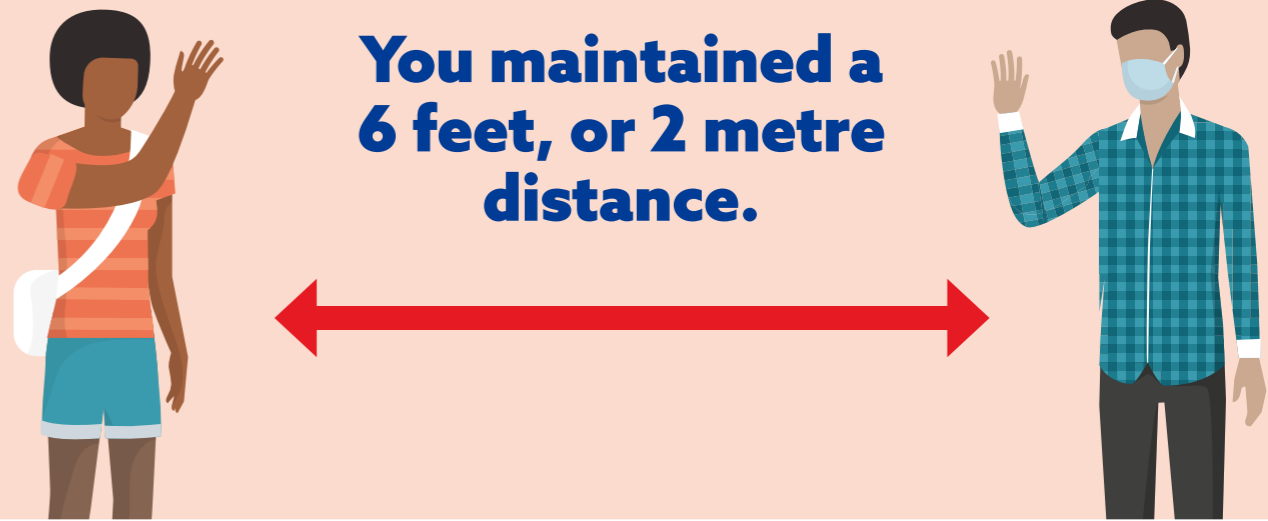
CLOSE CONTACT

You were within a 6 feet, or 2 metres distance for more than 15 minutes.



NOT CLOSE CONTACT

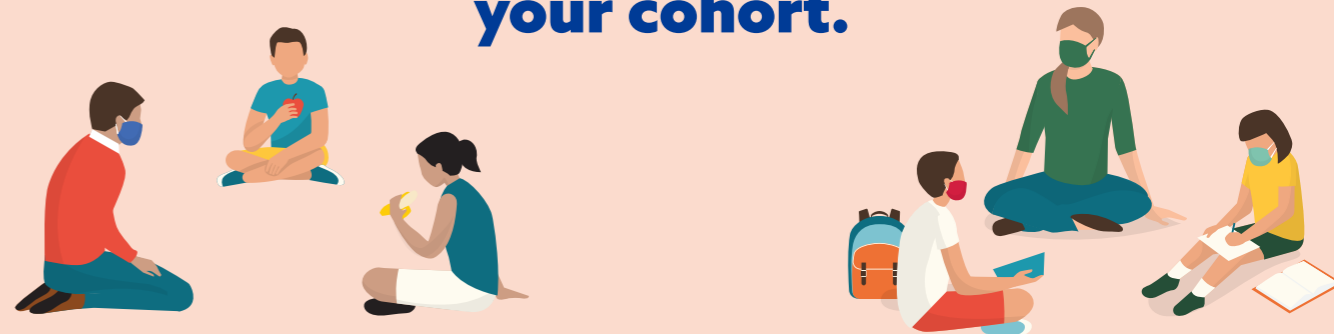
You maintained a 6 feet, or 2 metre distance.



Someone in your class, on your school bus or in your after school cohort.



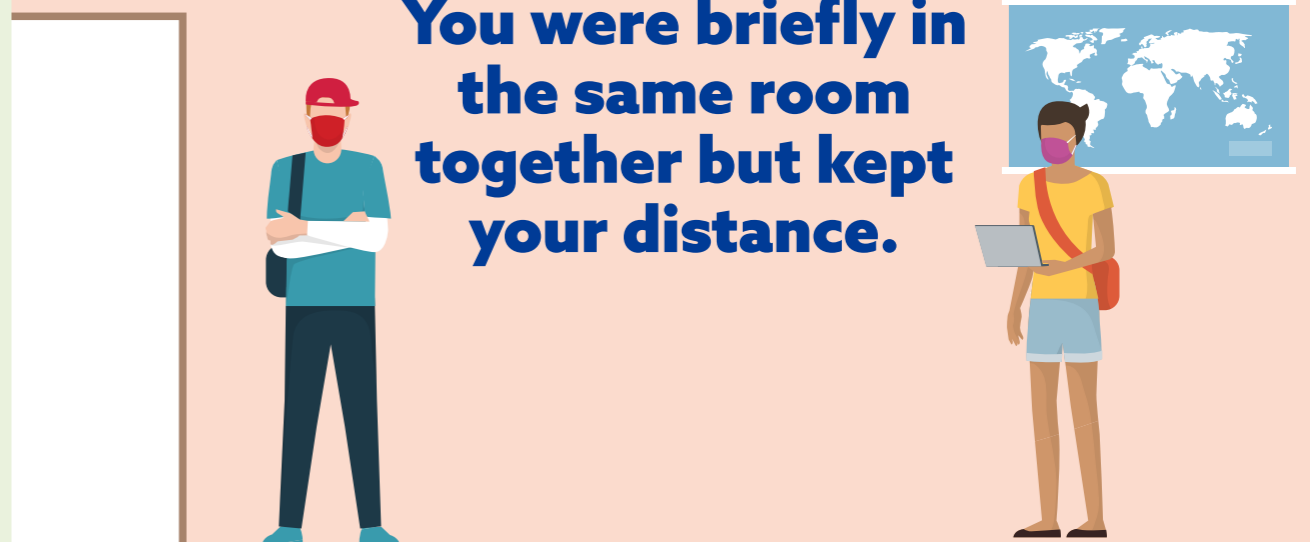
Goes to the same school, but is not in your cohort.



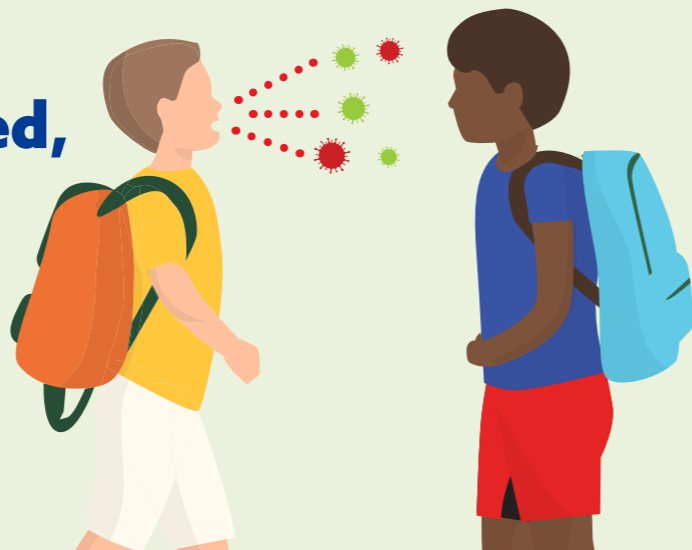
You had close physical contact with the person, such as a hug.



You were briefly in the same room together but kept your distance.



A person who accidentally sneezed, or coughed on you while talking in close proximity.



You passed a person quickly in the hall, or at recess.

