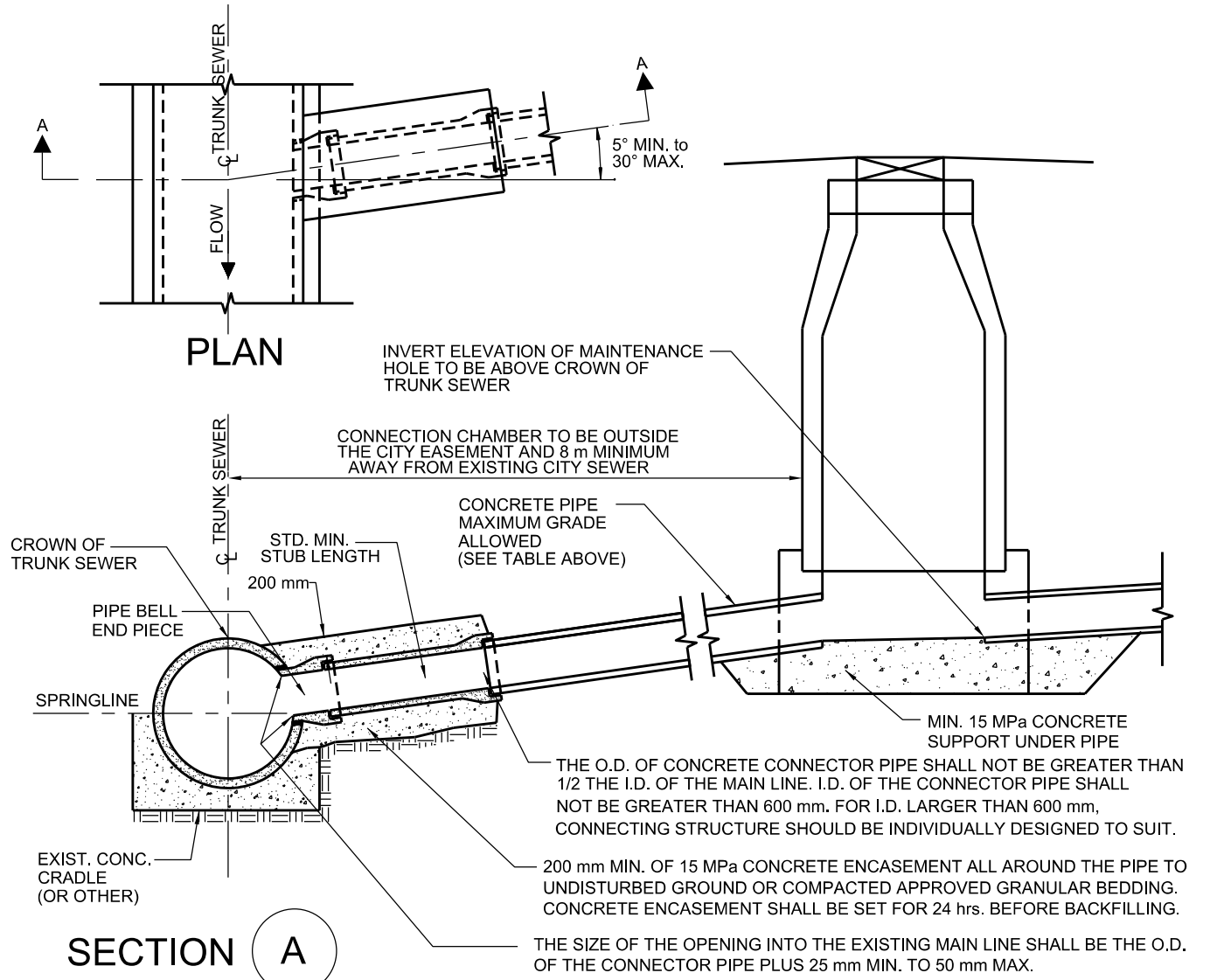


CONNECTING SEWER	THIS STANDARD DRAWING								INDIVIDUALLY DESIGNED CONNECTION														
DIA. (mm)	150	200	250	300	375	450	525	600	675	750	825	900	975	1050	1200	1350	1500	1650	1800	1950	2100	2250	2400
MAX. GRADE %	1.50	1.40	1.20	1.10	1.00	0.98	0.94	0.88	0.80	0.78	0.76	0.76	0.76	0.74	0.70	0.68	0.64	0.60	0.58	0.56	0.54	0.52	0.52
STANDARD MIN. STUB LENGTH	1.10	1.10	1.10	2.29	2.29	2.29	2.29	2.29	2.29	2.29	2.29	2.29	2.29	2.40	2.40	2.40	2.40	2.40	2.40	2.40	2.40	2.40	2.40



NOTES:

1. WHERE A CITY TRUNK SEWER IS LESS THAN 675 mm I.D., ANY CONNECTION TO THE CITY TRUNK SEWER MUST BE MADE AT AN EXISTING MAINTENANCE HOLE OR TO A NEW MAINTENANCE HOLE TO BE CONSTRUCTED ON THE CITY SEWER.
2. INSPECTOR SHALL BE PRESENT DURING BREAK-IN TO CONFIRM THE ALIGNMENT OF CONNECTING SEWER.
3. WHERE A CITY TRUNK SEWER IS GREATER THAN OR EQUAL TO A 675 mm I.D. ANY CONNECTION TO THE CITY TRUNK SEWER SHALL BE INVESTIGATED TO DETERMINE WHETHER THE CONNECTION CAN BE MADE TO AN EXISTING MAINTENANCE HOLE PRIOR TO CONSIDERING A PIPE TO PIPE CONNECTION.
4. MAINTENANCE HOLES TO BE RE-BENCH TO SUIT.

All dimensions are in millimetres unless otherwise shown.

	ENGINEERING & CONSTRUCTION SERVICES STANDARD DRAWING		REV 2	SEP 2017	
	TYPICAL CONNECTION TO CITY TRUNK SEWER 675 mm I.D. OR LARGER FROM CONCRETE TO CONCRETE			T-1006.01-1	
				NTS	SHEET 1