

Tippett Park

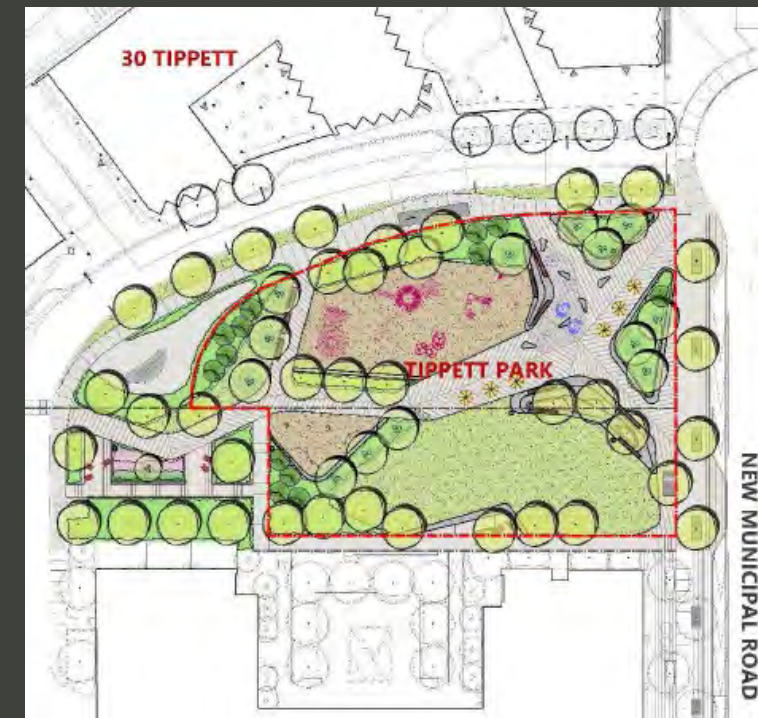
Design and Development

Virtual Public Meeting

16 November 2020



*Please note that all attendees have been muted and cameras have been turned off until the discussion period.



Land Acknowledgement

I'd like to begin by honouring the land that I'm on. If you are not currently in Toronto, I encourage you to learn about the lands you're on.

We acknowledge the land we are meeting on is the traditional territory of many nations including the Mississaugas of the Credit, the Anishnabeg, the Chippewa, the Haudenosaunee and the Wendat peoples and is now home to many diverse First Nations, Inuit and Métis peoples. We also acknowledge that Toronto is covered by Treaty 13 with the Mississaugas of the Credit.



Tips of Engagement for a Successful Virtual Meeting



All participants have been muted for this meeting.



All cameras have been **turned off** for this meeting.



Use the chat feature to ask questions. Or click the hand icon, beside your name from the participants list on the right.



Computer audio issues? Use your cell-phone for audio by calling 416-915-6530 and enter meeting number 133 244 9550. Press *3 to ask a question.



You will be given an opportunity to **ask panelists questions directly** during the Q&A.



Agenda



Welcome, Opening Remarks and Team Introductions



Project Timeline



Preliminary Park Design Concepts

(Questions of clarification)



Design Feedback and Discussion

thank
you!

Next Steps + Adjourn



Project Team

CITY OF TORONTO

Parks, Forestry and Recreation

Carol Martin

PFR Parks Development
Senior Project Coordinator

Rajesh Sankat

PFR Capital Projects
Senior Public Consultation
Coordinator

Alex Lavasidis

PFR Capital Projects
Senior Public Consultation
Coordinator

DESIGN TEAM

Nak Design Group

Design Lead

David Pantaleo

Project Landscape Architect

Sibylle Von Knobloch

Project Landscape Architect

DEVELOPER

Malibu Investments

Terry Lustig

Development Manager

Collecdev

Stuart Cooper

Director of Planning



James Pasternak

City of Toronto, Ward 6 York Centre

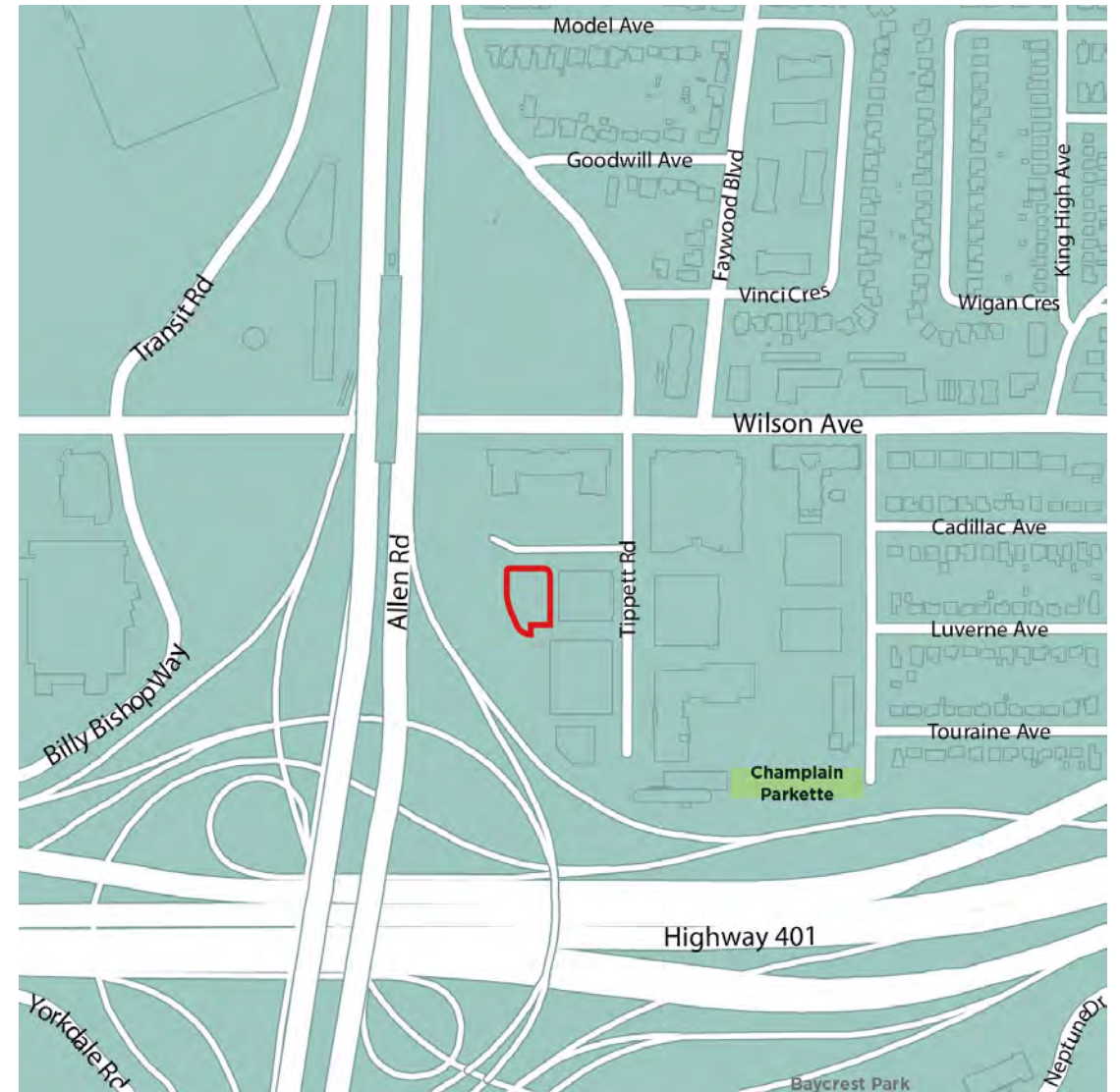


Project Overview

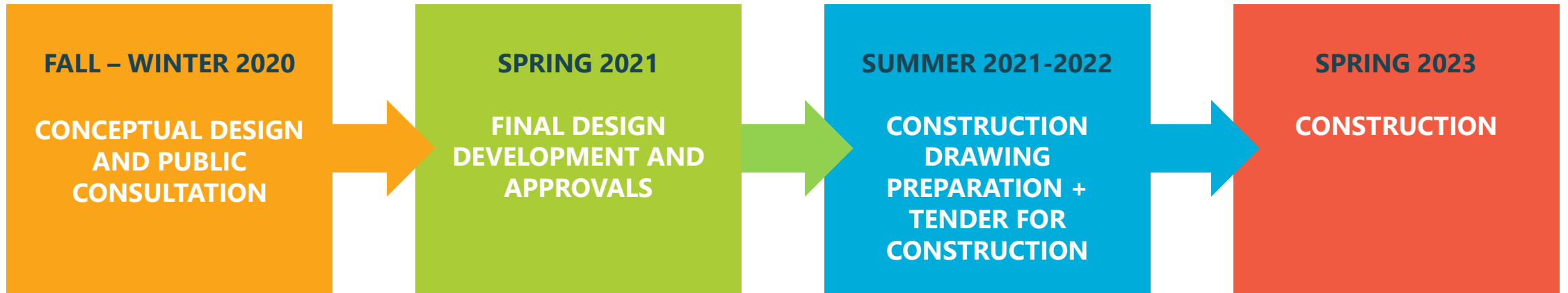
Carol Martin, Parks Forestry and Recreation

Purpose of the Meeting

Present and gather feedback on the preliminary park design concept plans for the new park coming to Tippet Road, including playground and programming elements.



Anticipated Project Timeline



Public Meeting #1
(November 16)

Online Survey
(November 16 –
December 6)

Preliminary Park Design Concepts

David Pantaleo, Nak Design Group

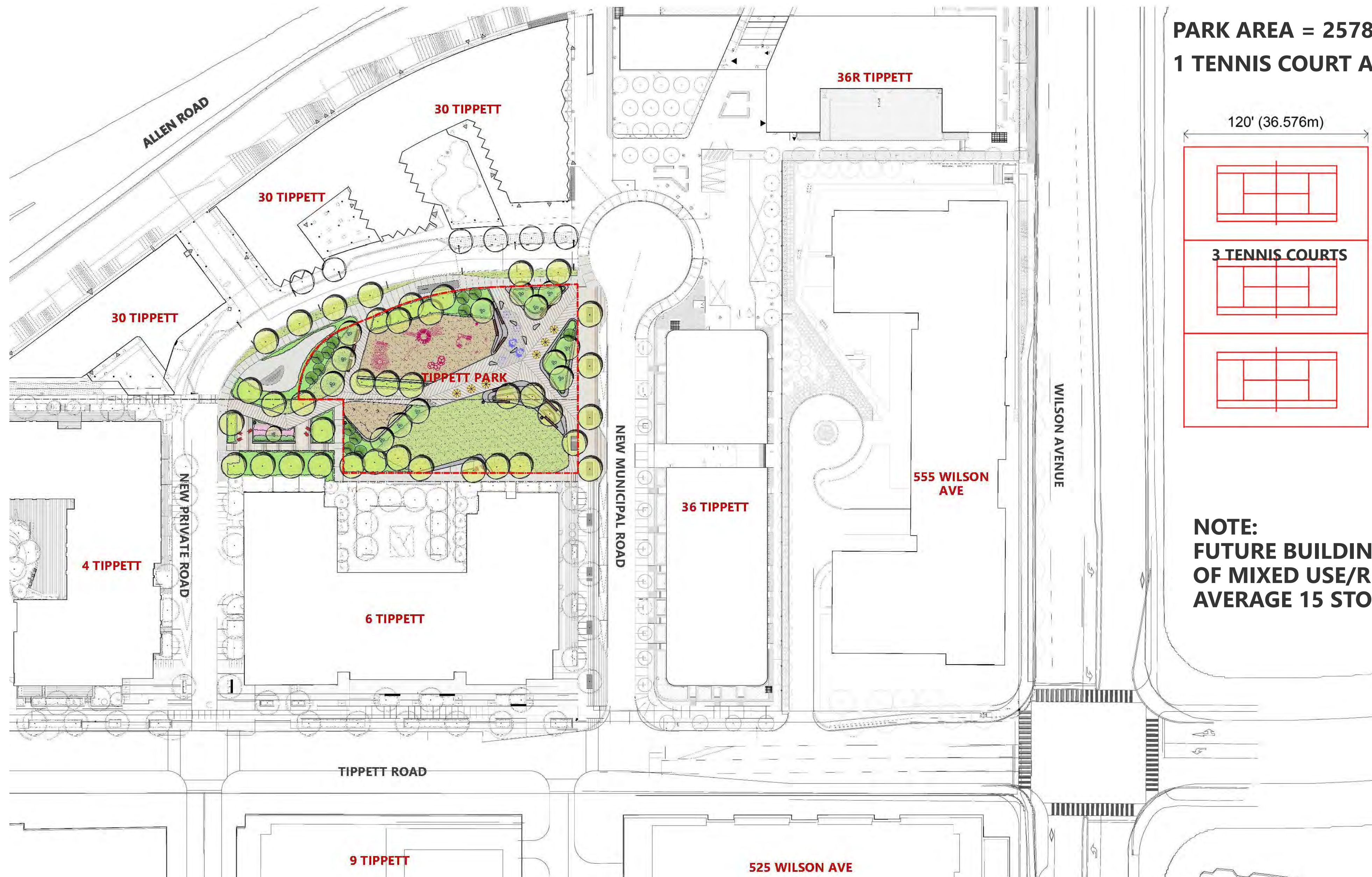
SITE MAP



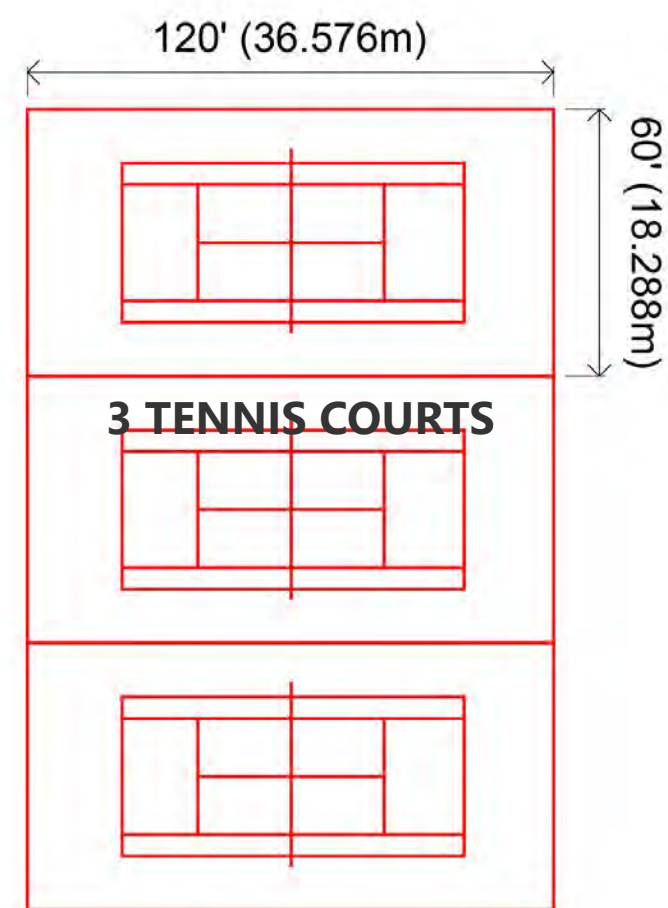
CONTEXT PLAN



FUTURE CONTEXT PLAN

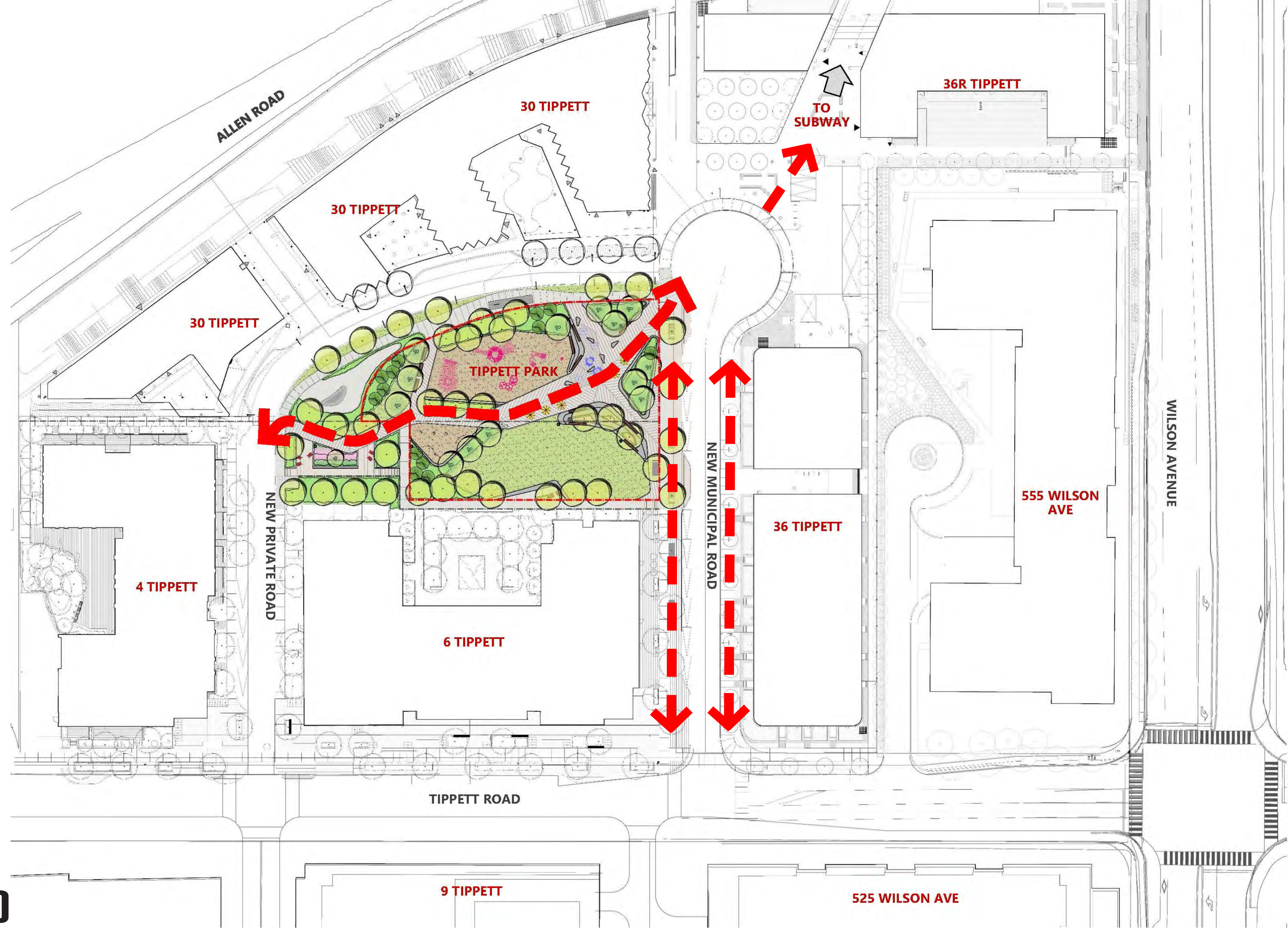


PARK AREA = 2578.422 Sqm
1 TENNIS COURT AREA = 668.9 Sqm



NOTE:
FUTURE BUILDINGS TO COMPRISE
OF MIXED USE/RESIDENTIAL,
AVERAGE 15 STOREYS

CONNECTIONS



TIPPETT PARK WILL PROVIDE A MULTI FACETED OUTDOOR SPACE FOR THE SURROUNDING COMMUNITY WITH A FOCUS ON OUTDOOR ACTIVITY AND CONNECTIONS TO NATURE. THE PARK WILL FEATURE AMPLE GREEN SPACES FOR MULTI-USE, ACTIVITY AND CASUAL GATHERING AND WILL PROVIDE ELEMENTS OF PLAY FOR ALL AGES TO ENJOY.

GOAL:

- NUMEROUS **GREEN SPACES** FOR PEOPLE TO GATHER AND RETREAT WILL BE PROVIDED
- PLAY STRUCTURES AND OUTDOOR FITNESS WILL BE INTRODUCED TO ENCOURAGE AN **ACTIVE OUTDOOR LIFESTYLE**
- SMALLER GATHERING SPACES WILL BE DISTRIBUTED THROUGHOUT THE PARK TO SUPPORT THE NEW COMMUNITY IN **CONNECTING WITH EACH OTHER** AND **WITH NATURE**

PARK PROGRAMMING



MASTERPLAN



FEATURE SEATING

TABLE+CHAIRS
WITH UMBRELLAS

CONCRETE SEAT WALL &
PLANTER BEDS

DRINKING WATER FOUNTAIN
AND JUG FILLER

SEATING MOUND WITH
PLANTING

LOCKSTONE PAVING

LOOKOUT POINT

ENTRY PLAZA

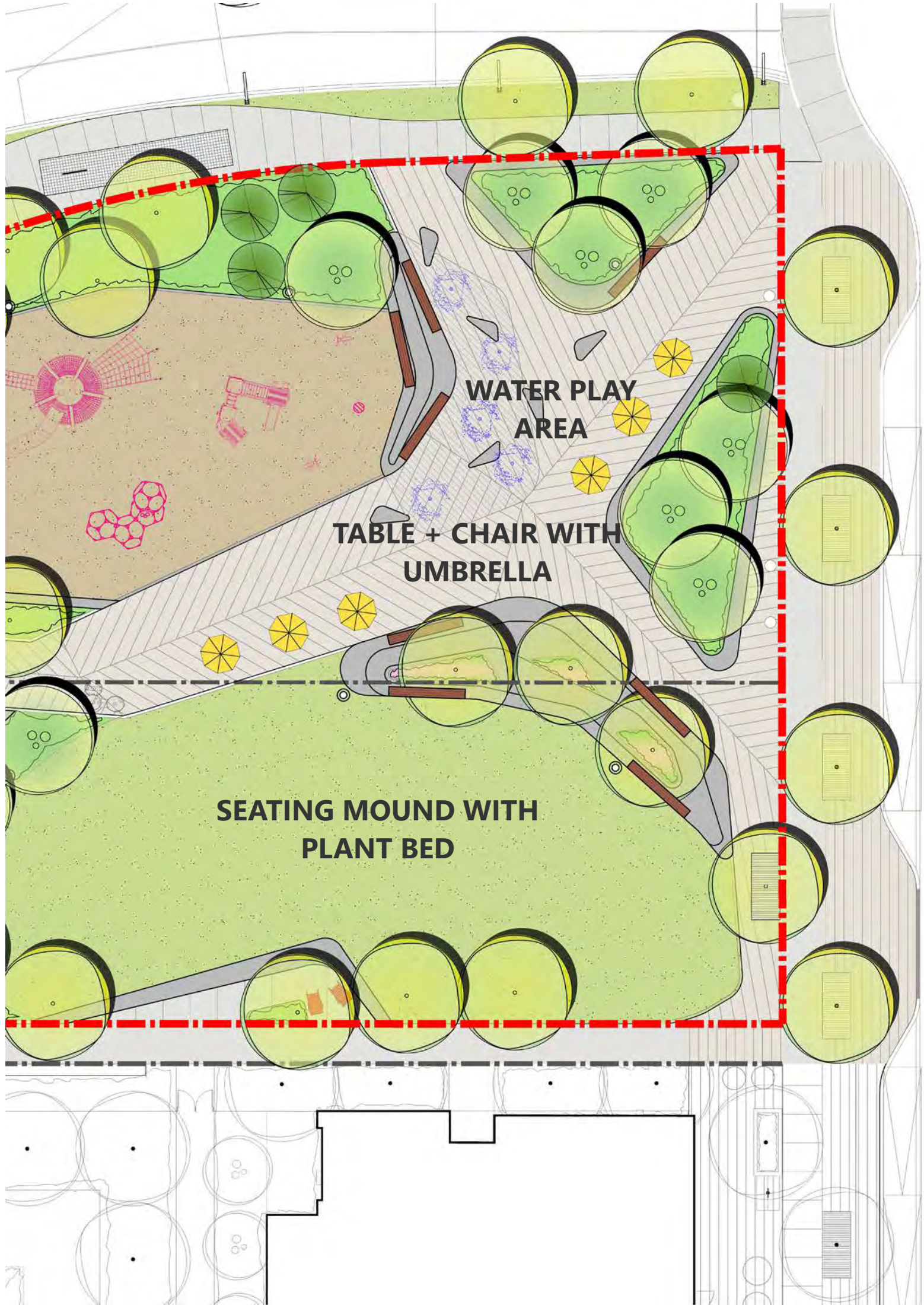
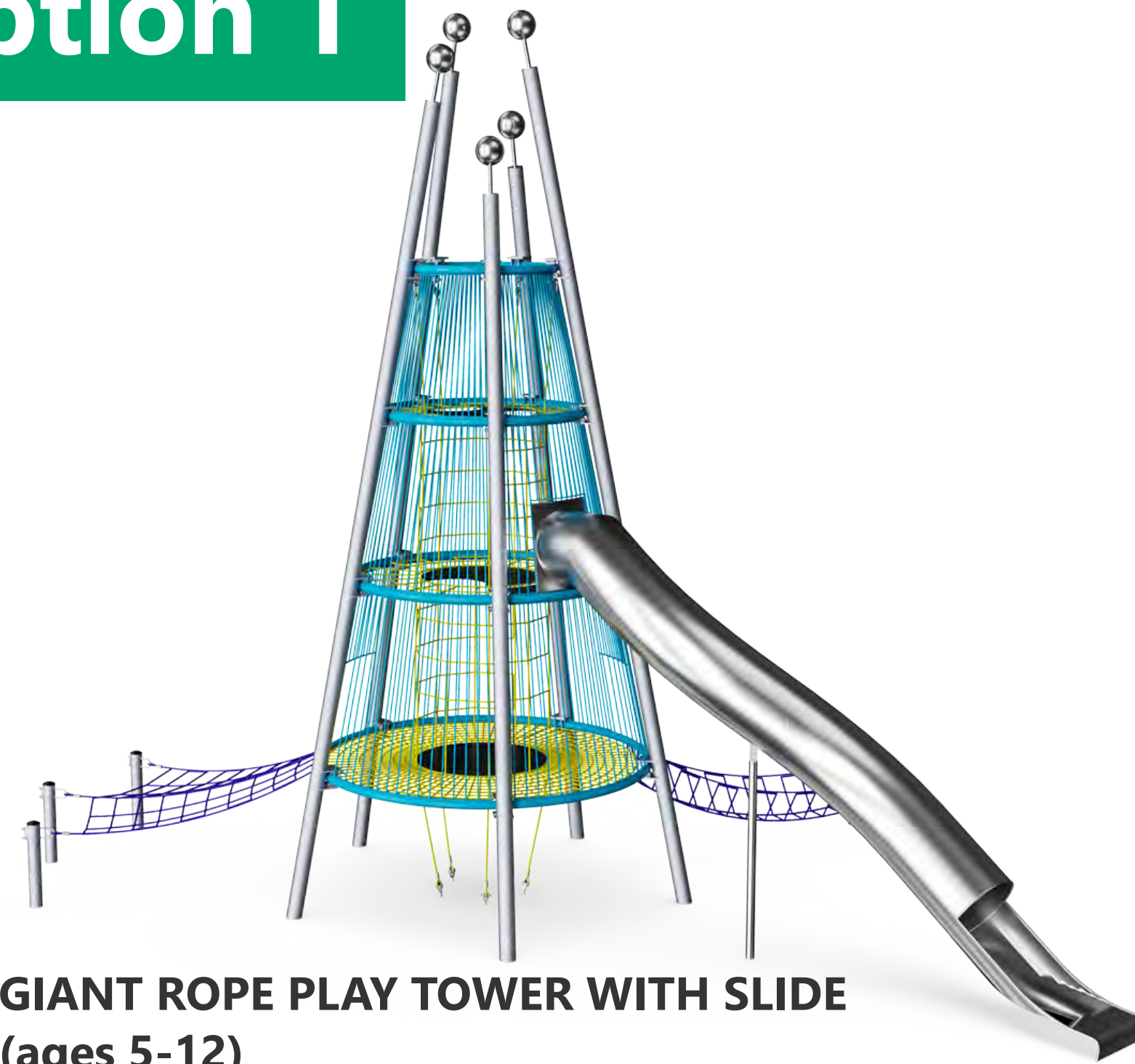


TABLE + CHAIRS WITH UMBRELLA



WATER PLAY INCORPORATING ARCHITECTURAL ELEMENTS AND SPRAY NOZZLES

CHILDREN'S PLAY AREA - Option 1



GIANT ROPE PLAY TOWER WITH SLIDE
(ages 5-12)



GEOMETRIC ROCK-CLIMBING UNIT
(ages 5-12)



DREAM CATCHER NET CLIMBER
(ages 5-12)



SPINNER BOWL
(ages 5-12)

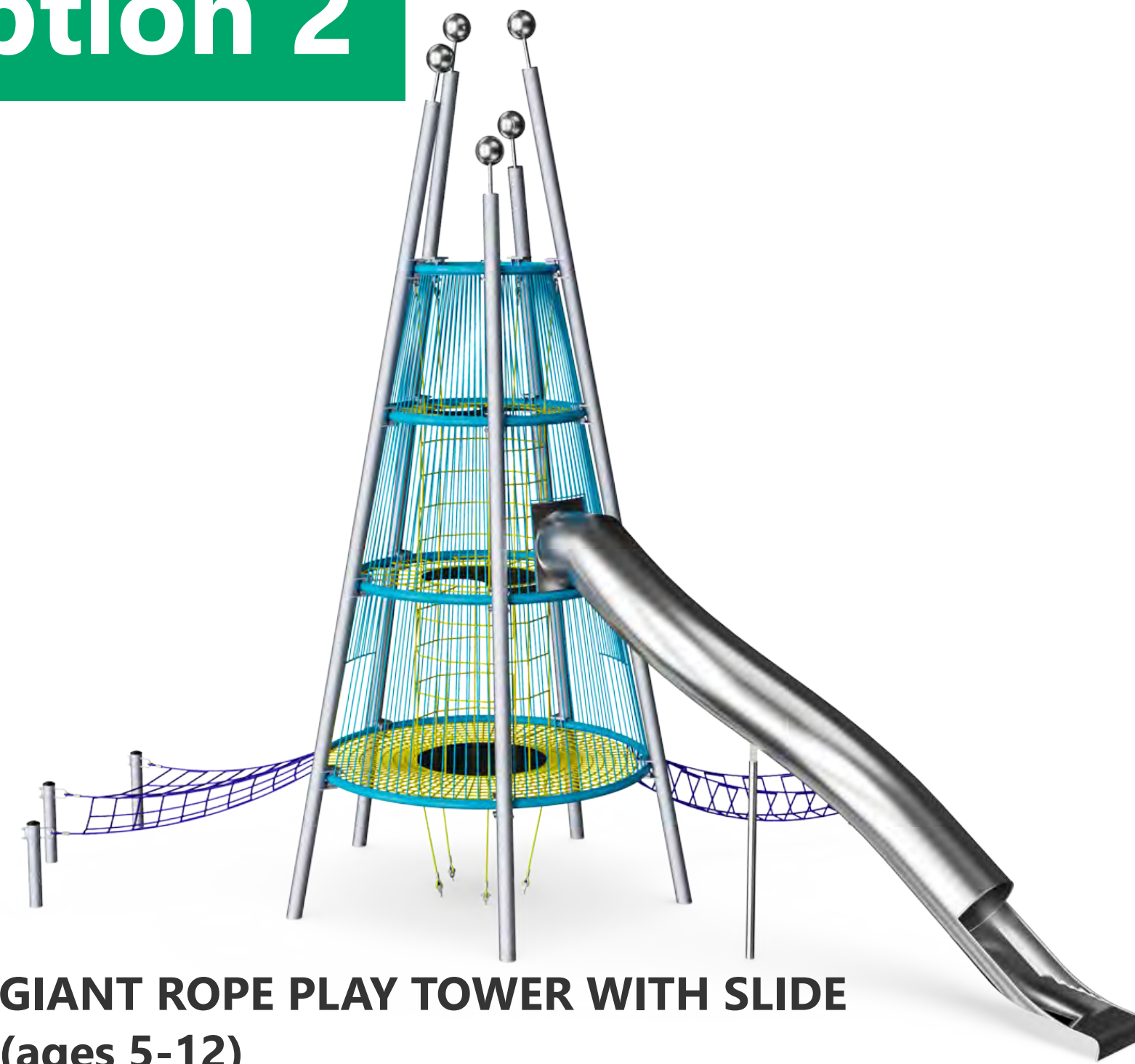
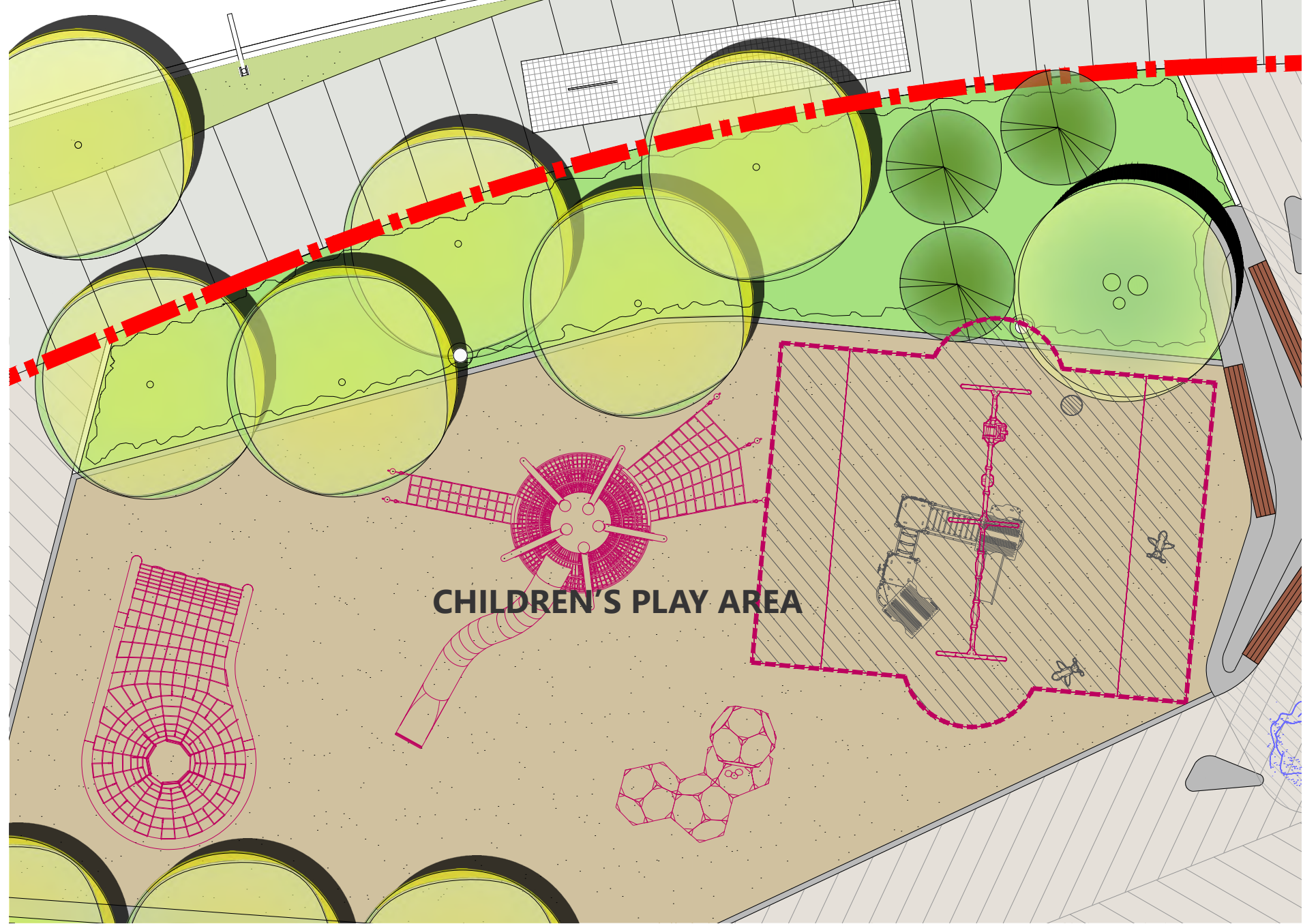


BEE SPRINGER
(ages 2-5)



PLAY TOWER WITH BRIDGE & SLIDE
(ages 2-5)

CHILDREN'S PLAY AREA - Option 2



GIANT ROPE PLAY TOWER WITH SLIDE
(ages 5-12)



GEOMETRIC ROCK-CLIMBING UNIT
(ages 5-12)

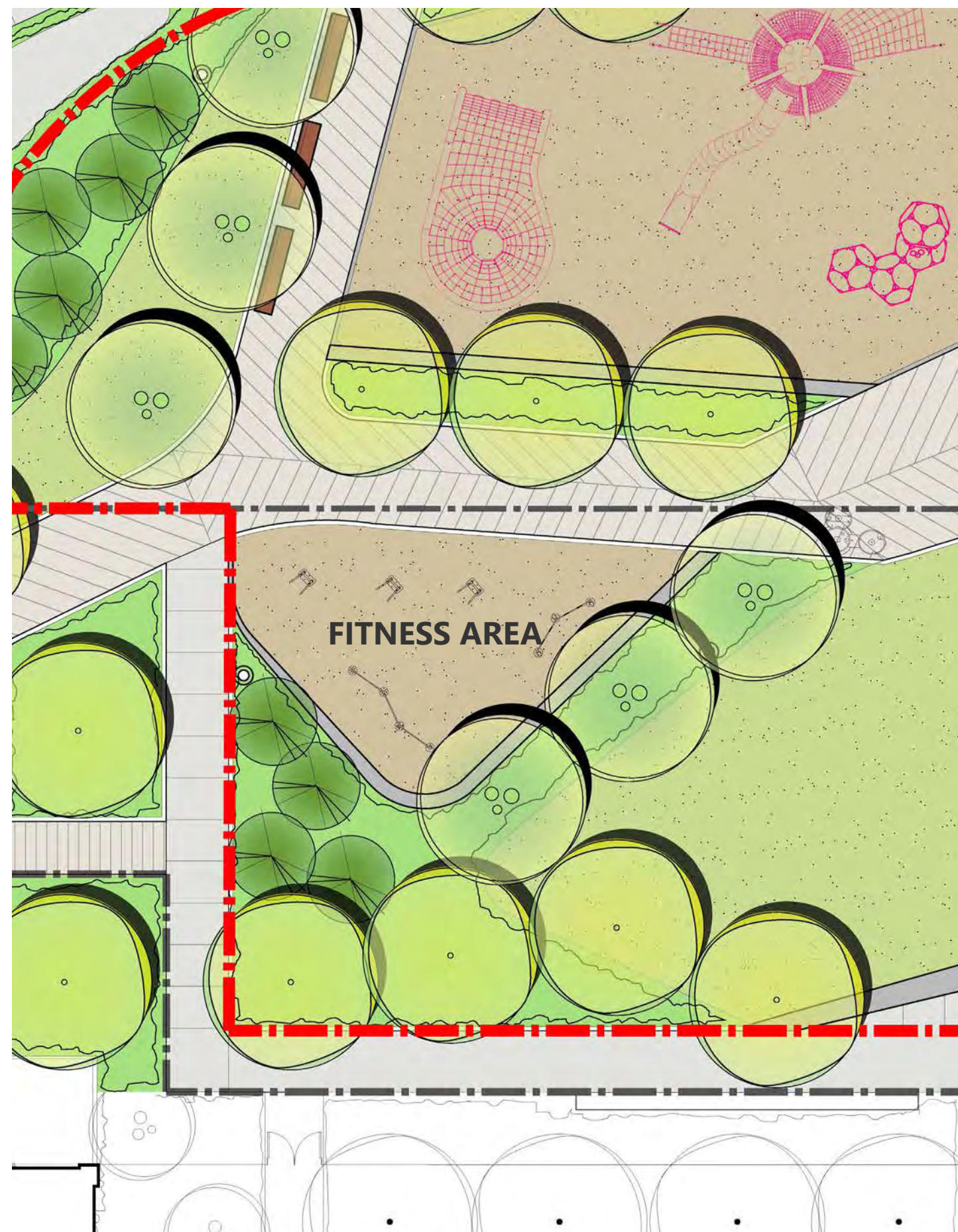


DREAM CATCHER NET CLIMBER
(ages 5-12)



SWING SET WITH 4 SWINGS
(ages 2-8)

FITNESS AREA

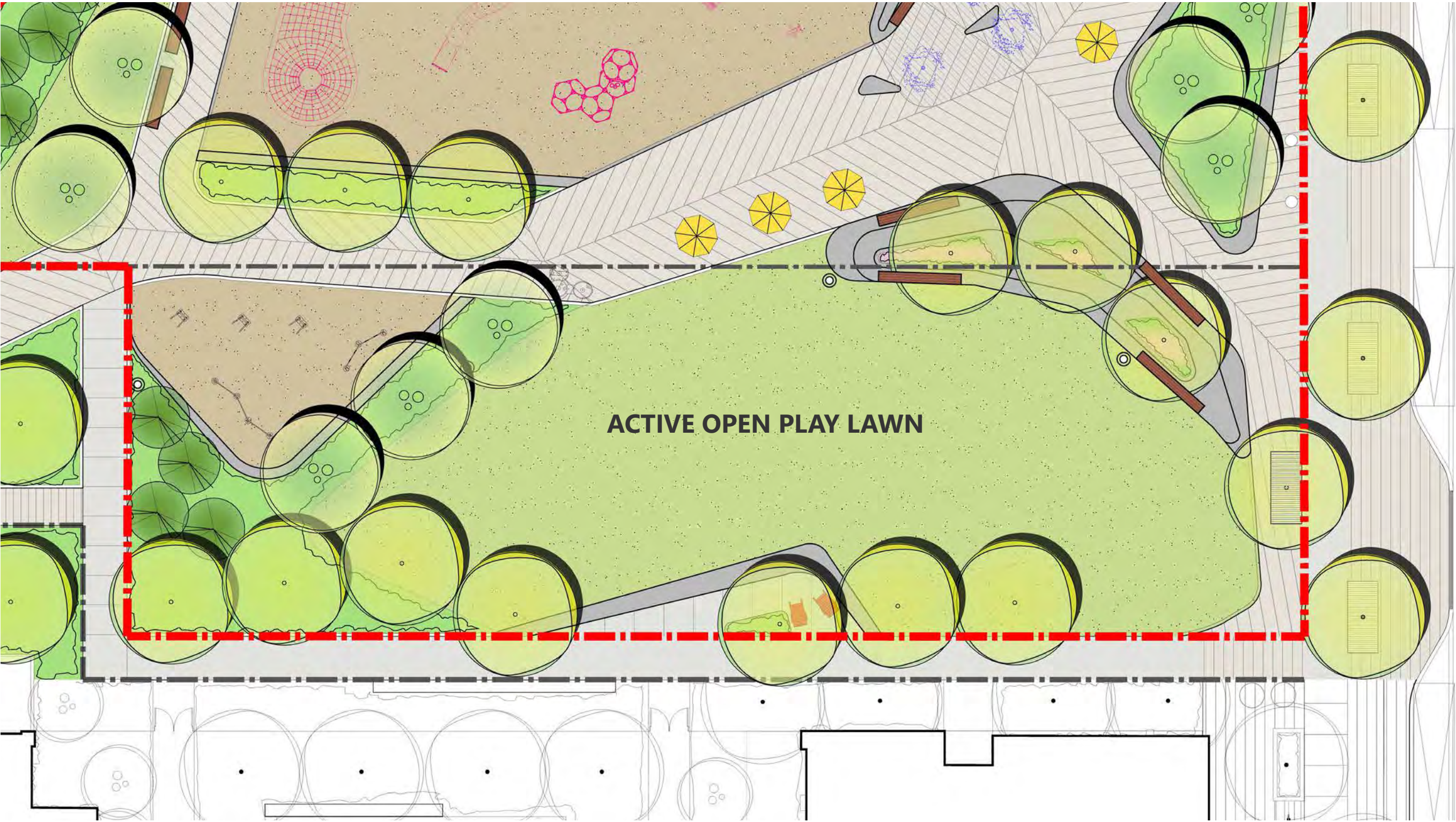


FITNESS STEPPERS



PULL-UP & PUSH-UP BARS

OPEN LAWN



OPEN LAWN AS GATHERING SPACE



ACTIVE PLAY

PLANTING PALETTE

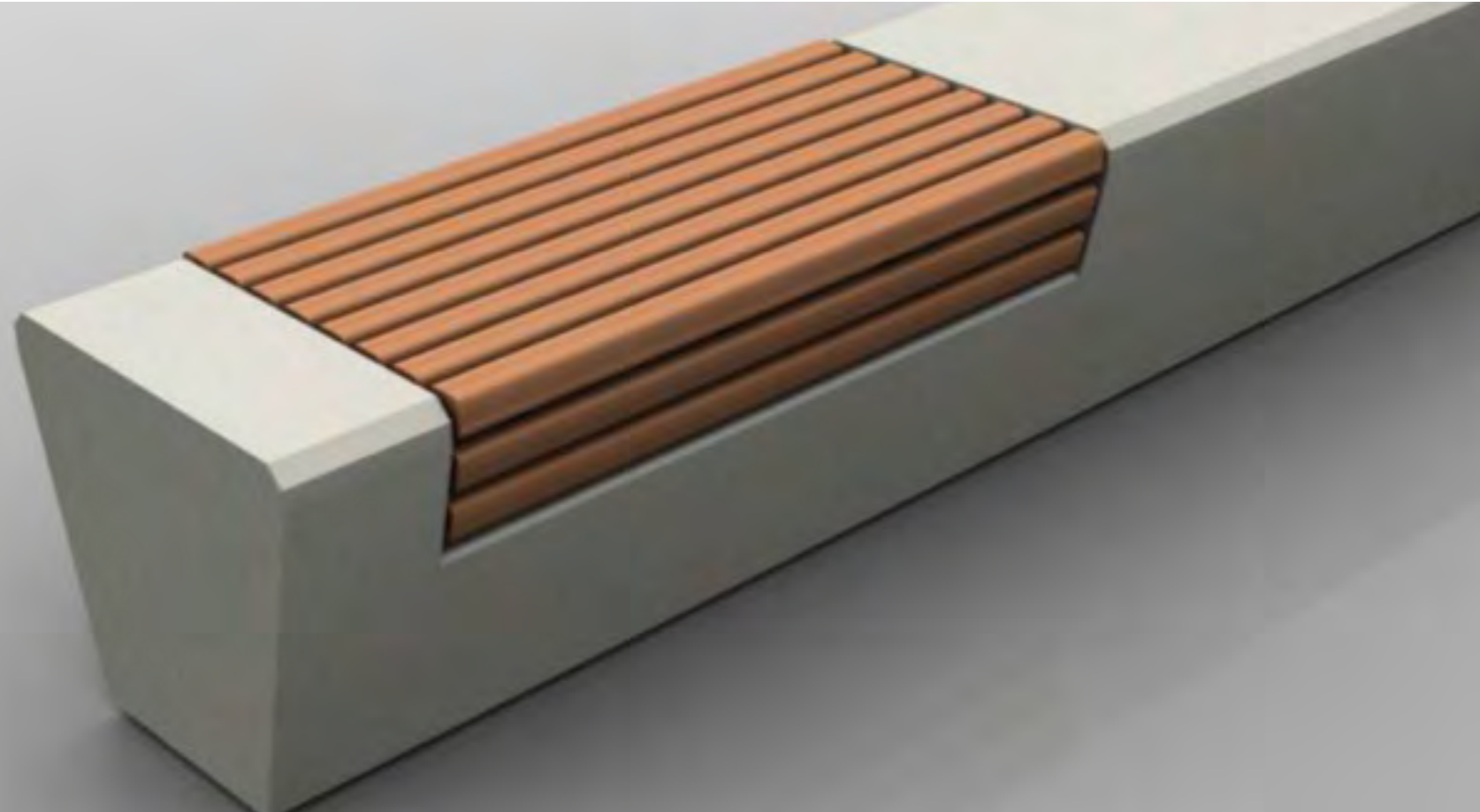


VARIETY OF INTENSIVE PLANTING AREAS WITH EVERGREEN FOCUS AND YEAR-ROUND INTEREST

MATERIALS OVERVIEW



PRECAST CONCRETE BENCHES / SEATING MOUNDS



IPE BENCHES ON CONCRETE



FIXED SEATING



LINEAR 'PLANK STYLE' PAVERS



FIXED METAL UMBRELLAS

VIEW LOOKING SOUTH FROM ENTRY PLAZA



Q&A

Design Feedback

Do you have any questions of clarification?

Discussion



Discussion



Next Steps

**Visit the project webpage at
www.toronto.ca/TippettPark to:**

- Share your feedback through the online questionnaire Sunday, December 6th!
- Sign up for e-updates
- Access this presentation and a meeting summary when available

**Email any additional comments to
Carol.Martin@toronto.ca by December 6th**

HAVE A NICE DAY

 **TORONTO** Parks & Recreation