

New Park at 25 Holmes Avenue

Design and Development

Virtual Public Meeting

23 November 2020



*Please note that all attendees have been muted and cameras have been turned off until the discussion period.



Land Acknowledgement

I'd like to begin by honouring the land that I'm on. If you are not currently in Toronto, I encourage you to learn about the lands you're on.

We acknowledge the land we are meeting on is the traditional territory of many nations including the Mississaugas of the Credit, the Anishnabeg, the Chippewa, the Haudenosaunee and the Wendat peoples and is now home to many diverse First Nations, Inuit and Métis peoples. We also acknowledge that Toronto is covered by Treaty 13 with the Mississaugas of the Credit.



Tips of Engagement for a Successful Virtual Meeting



All participants have been muted for this meeting.



All cameras have been **turned off** for this meeting.



Use the chat feature to ask questions. Or click the hand icon, beside your name from the participants list on the right.



Computer audio issues? Use your cell-phone for audio by calling 416-915-6530 and enter meeting number 133 244 9550. Press *3 to ask a question.



You will be given an opportunity to **ask panelists questions directly** during the Q&A.



Agenda

Welcome, Opening Remarks and Team Introductions

Project Overview

Early Park Design Concept and Playground Options

(Questions of clarification)

Design Feedback and Discussion

Next Steps + Adjourn



Project Team

CITY OF TORONTO

Parks, Forestry and Recreation

Jessica Chan

PFR Parks Development
Project Coordinator/Landscape Architect

Rajesh Sankat

PFR Capital Projects
Senior Public Consultation Coordinator

Alex Lavasidis

PFR Capital Projects
Senior Public Consultation Coordinator

Lisa Ryan

PFR Parks Operations
General Supervisor

Gianluca DiCintio

PFR Parks Technical Services
General Supervisor

DESIGN TEAM

Studio TLA Design Lead

Jeffrey Craft

Principal Landscape Architect

Hakima Hoseini

Associate Landscape Architect

Shadi Gilani

Landscape Designer

DEVELOPER

Capital Developments

Carlo Timpano

Senior VP, Development

Chris Dynes

Manager, Development



Councillor John Filion
City of Toronto, Ward 18 Willowdale

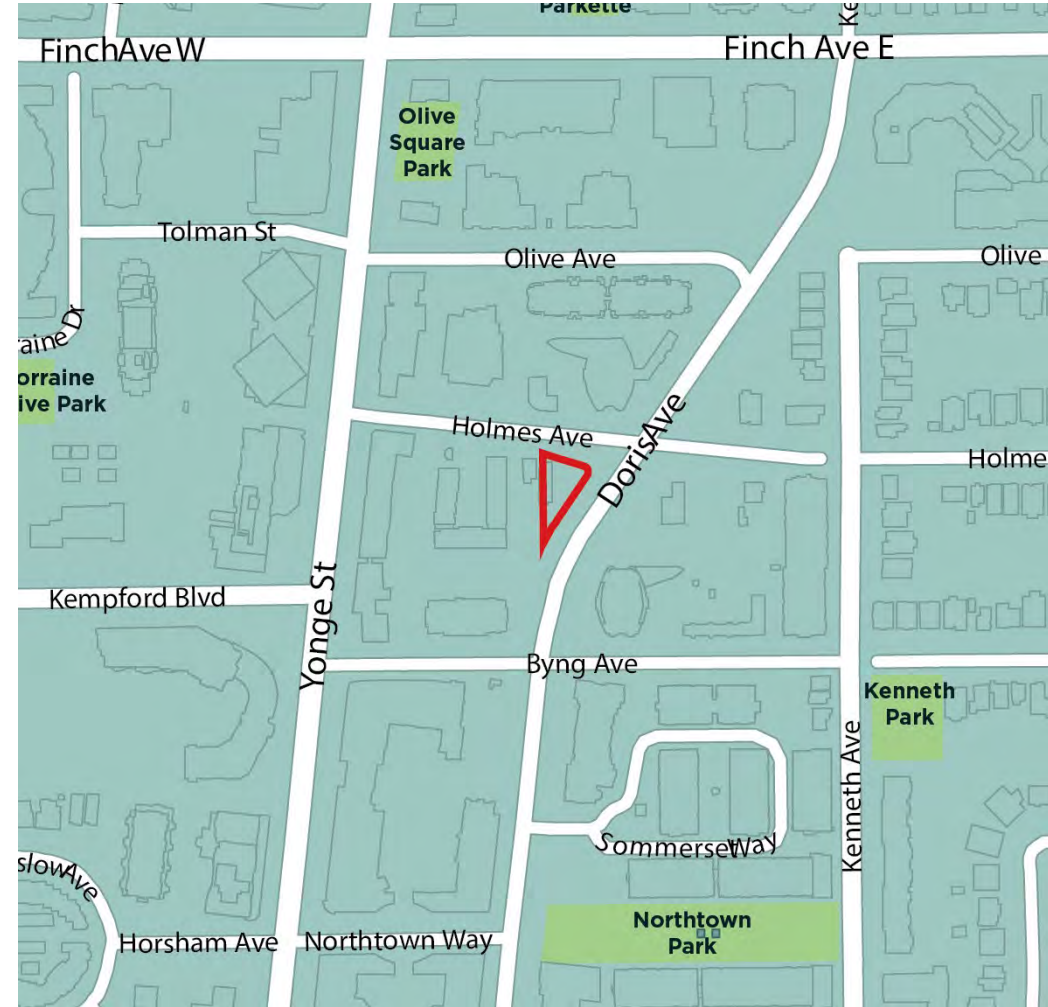


Project Overview

Jessica Chan, Parks Forestry and Recreation

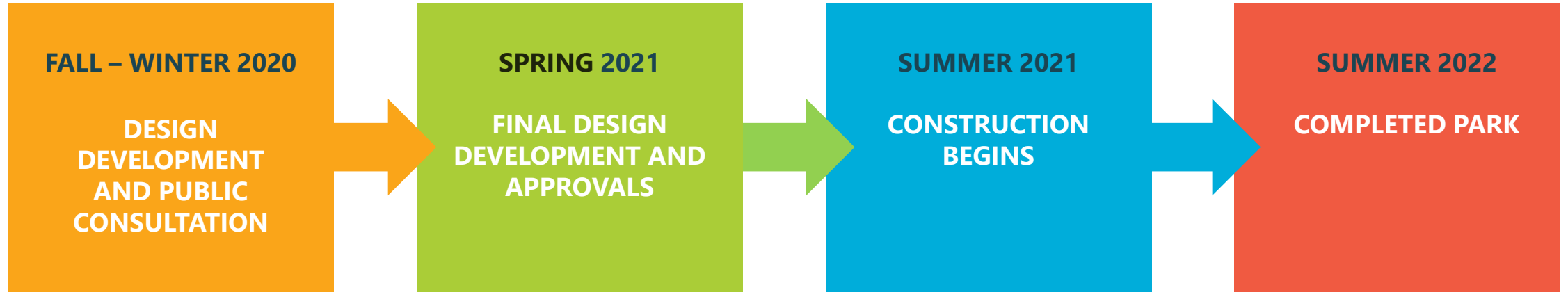
Purpose of the Meeting

Present and gather feedback on the early design concepts for the **new park coming to 25 Holmes Avenue**, including playground and programming elements.



Anticipated Project Timeline

WE ARE HERE



Virtual Public Meeting

(November 23)

Online Survey

(November 23 –
December 11)



Visual communications advertising the upcoming Virtual Public Meeting and Online Questionnaire were posted near the park site on November 10.

Community Outreach and Consultation

Week of November 9th

E-flyers and physical postcards sent out to purchasers and community residents notifying them of the upcoming virtual public meeting and online survey

November 23rd

Virtual Public Information Meeting hosted by PFR

November 23rd to December 11th

Online Survey for input on Design Concept Options

December 2020

Meeting and Survey summary posted on [Toronto.ca/25HolmesPark](https://toronto.ca/25HolmesPark)

Early 2021

Concept Designs

Jeffrey Craft, STUDIO tla

Site Location


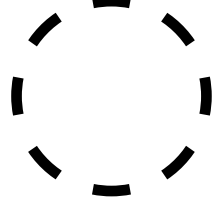




The New Park at 25 Holmes Avenue is located in the **Willowdale Neighbourhood** within **Ward 18**. The new 1000m² park is at the southwest corner of Holmes Avenue and Doris Avenue.

Site Location



LEGEND

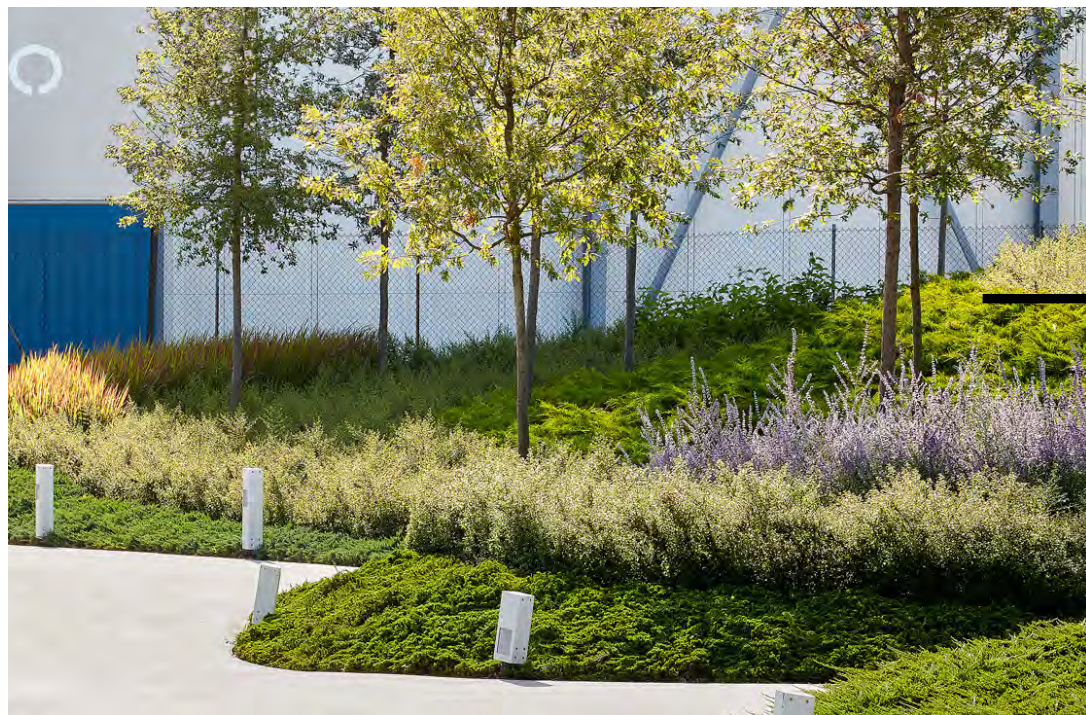
-  New Park
-  500m Radius
-  TTC Station
-  City Parks

PARK LIST

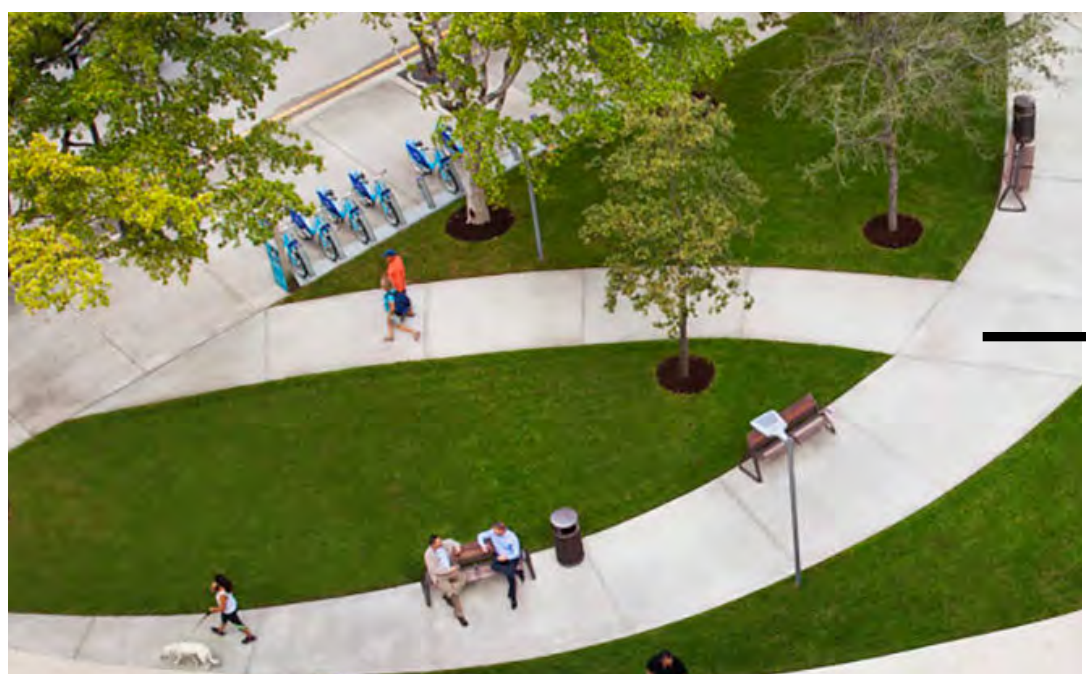
- Olive Square (seating)
- Bishop Park (playground and seating)
- Kenneth Park (playground)
- Northtown Park (playground)
- Kempford Park (playground)
- Lorraine Drive Park (playground and seating)



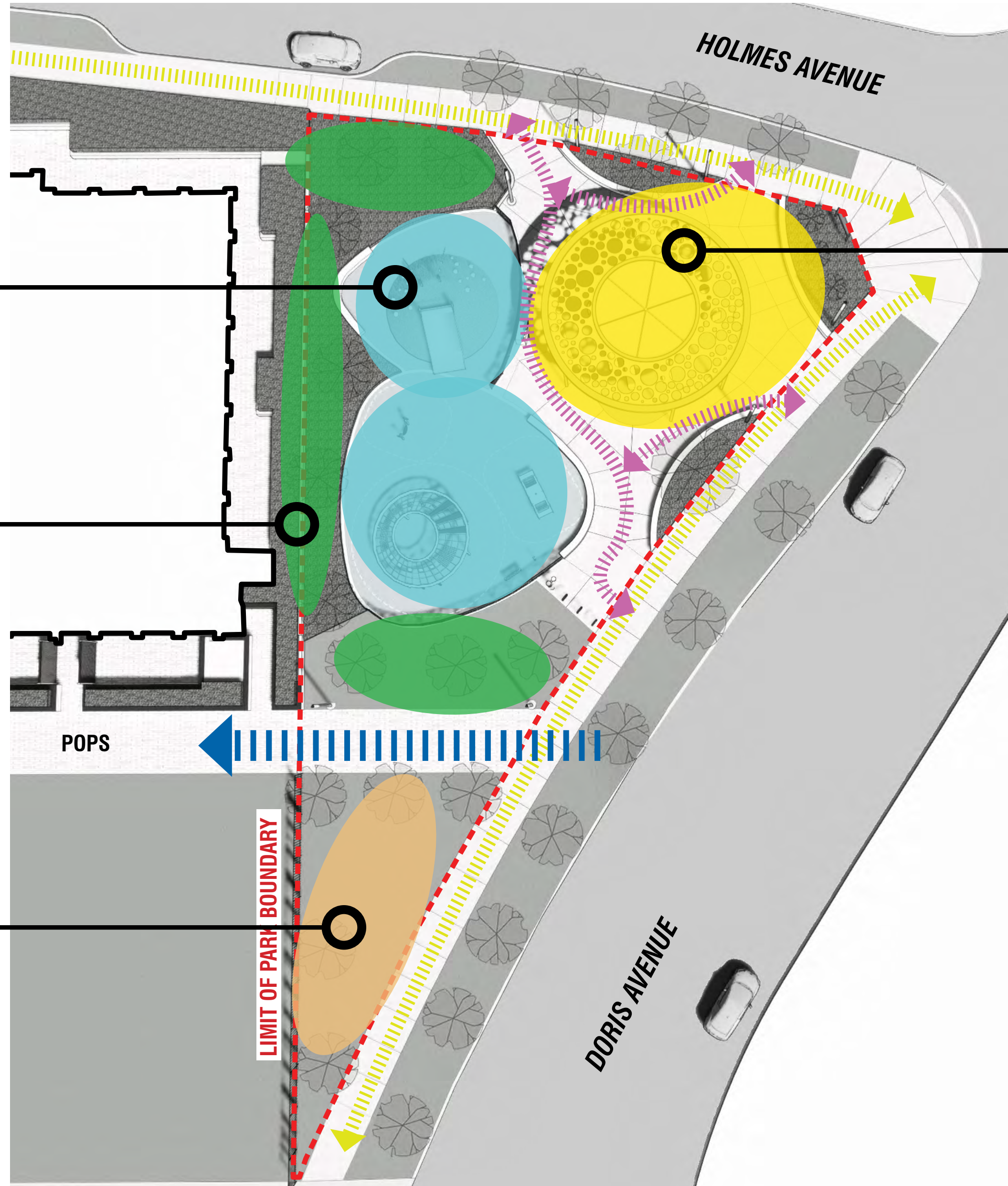
Active Zone, Playground



Buffer Zone, Planting Areas



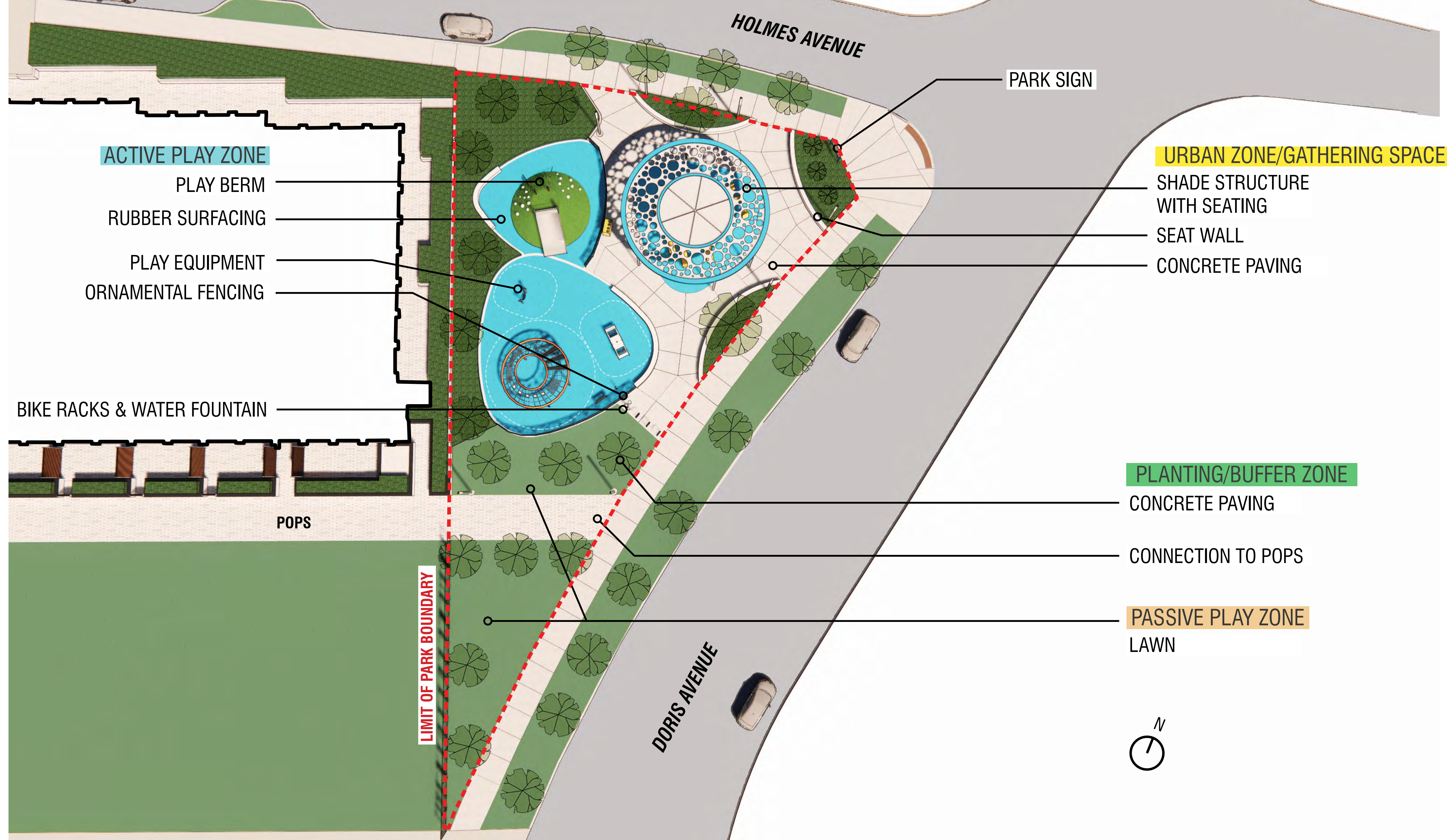
Passive Zone, Lawn Area



Urban Zone, Gathering Space

- URBAN ZONE/
GATHERING SPACE
 - ACTIVE PLAY ZONE
 - PASSIVE PLAY ZONE
 - PLANTING/BUFFER ZONE
 - CONNECTION TO POPS
 - INTERIOR PATHWAYS
 - SIDEWALK
 - LIMIT OF PARK BOUNDARY
- N
⊙

FUNCTIONAL ZONE DIAGRAM



Site Elements

Paving Material



Rubber Surfacing

Site Furnishing



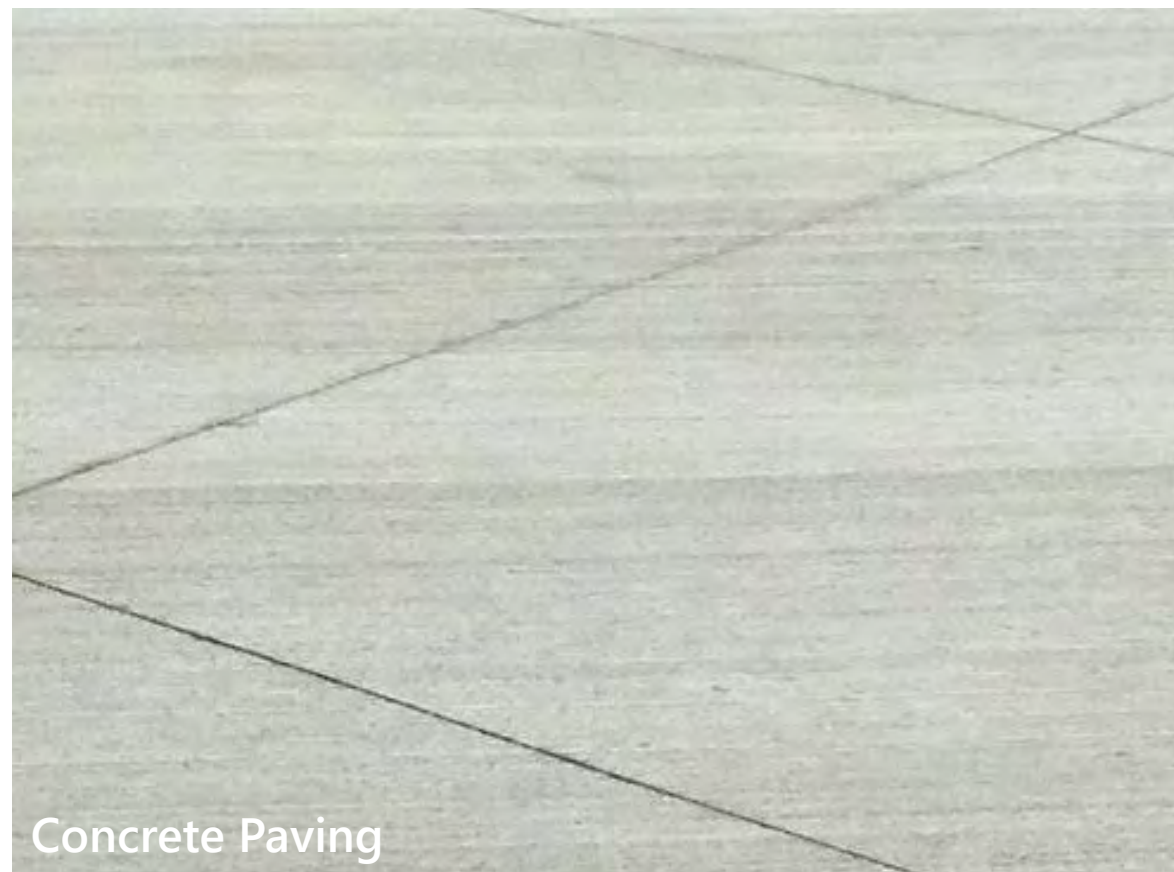
Ornamental Fence



Shade Structure



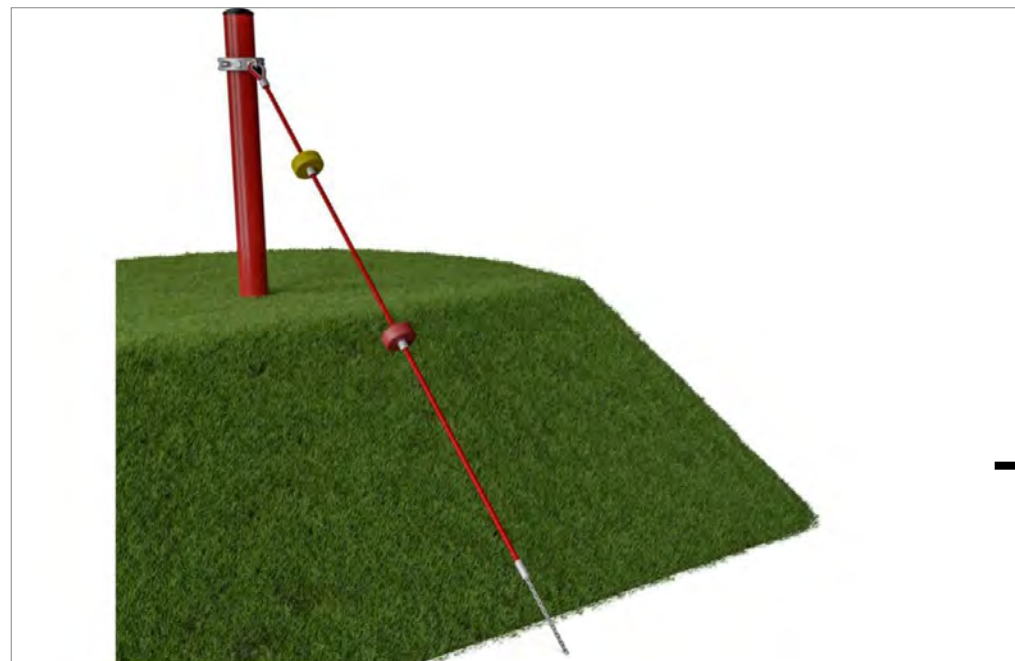
Concrete Paving



Play Equipment Option 1



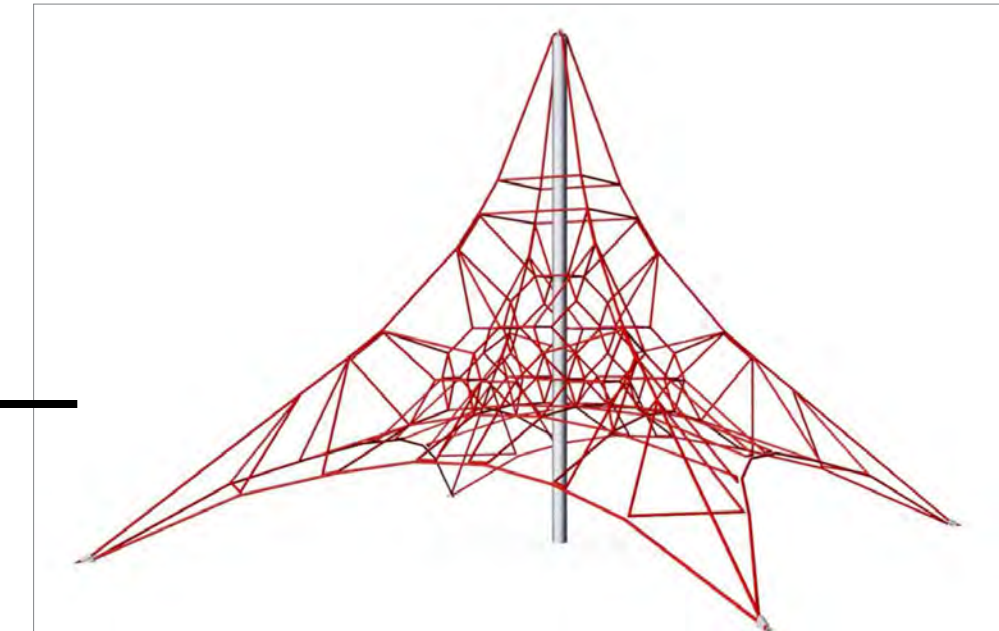
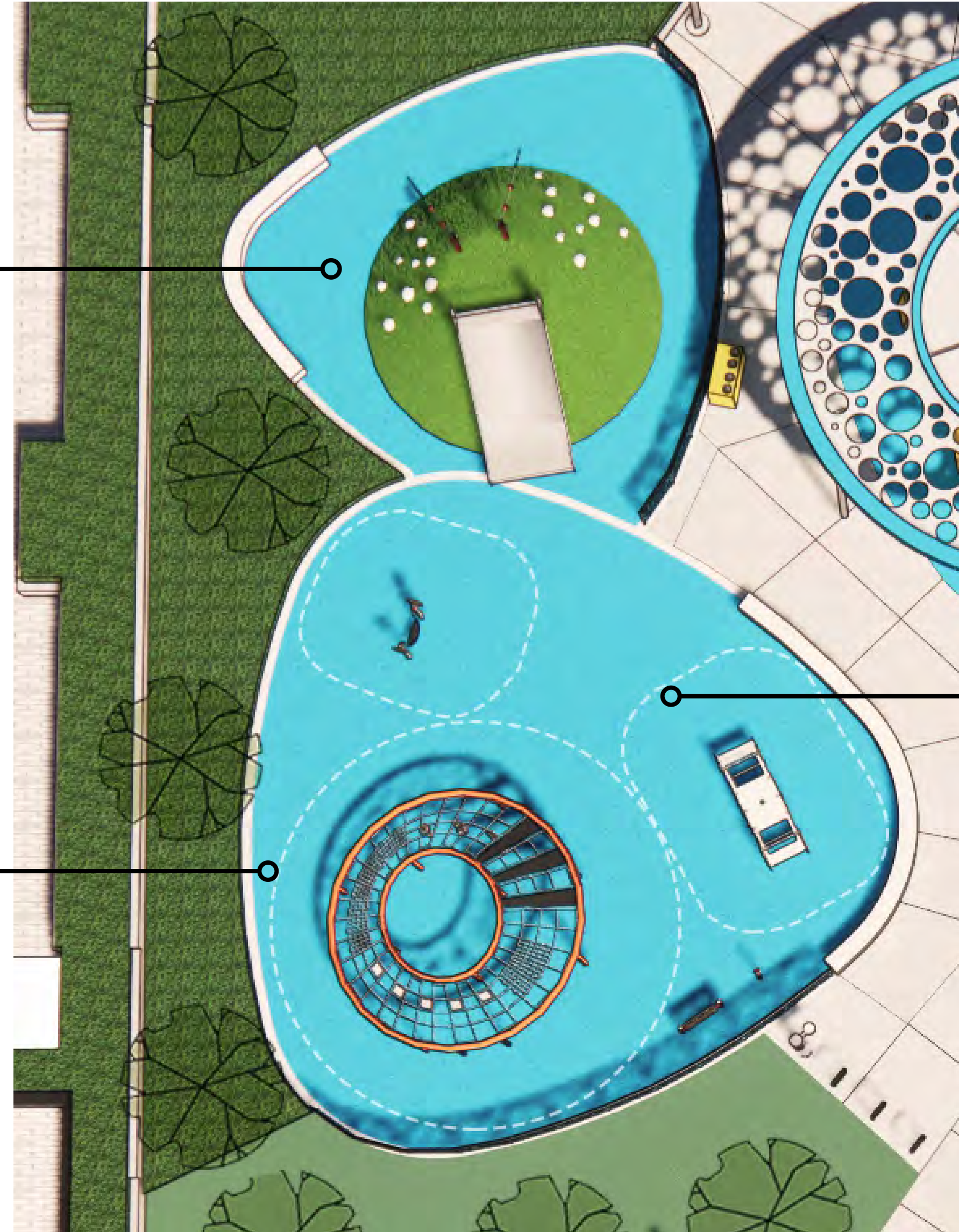
Embankment Slide



Hill Climber Rope



Sunflower Swing



Mini Spacenet



Emotion Play Panel

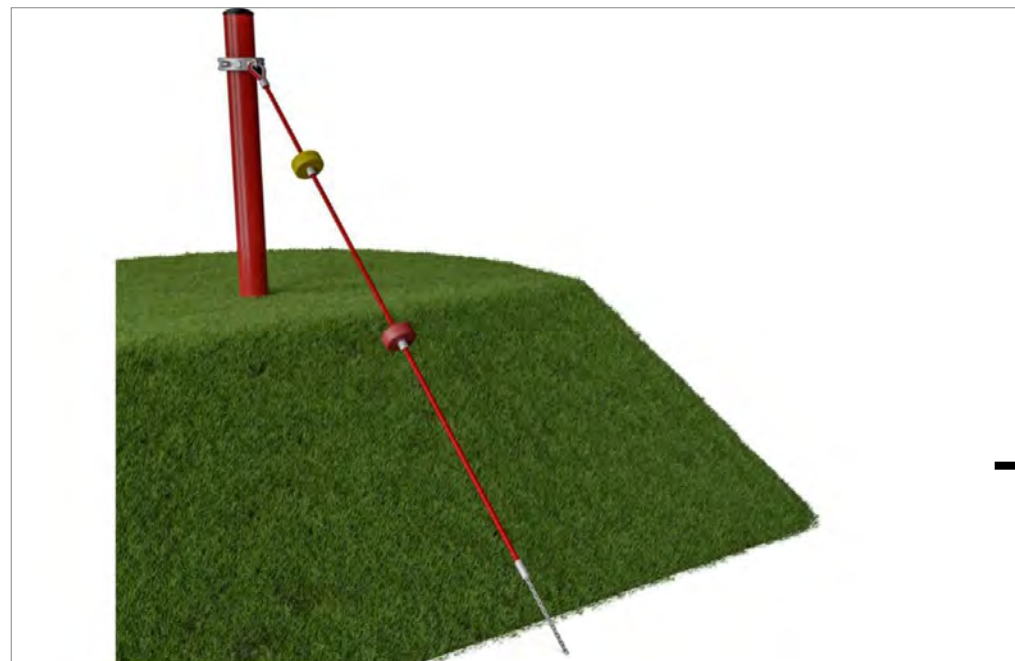


Multispinner Carousel

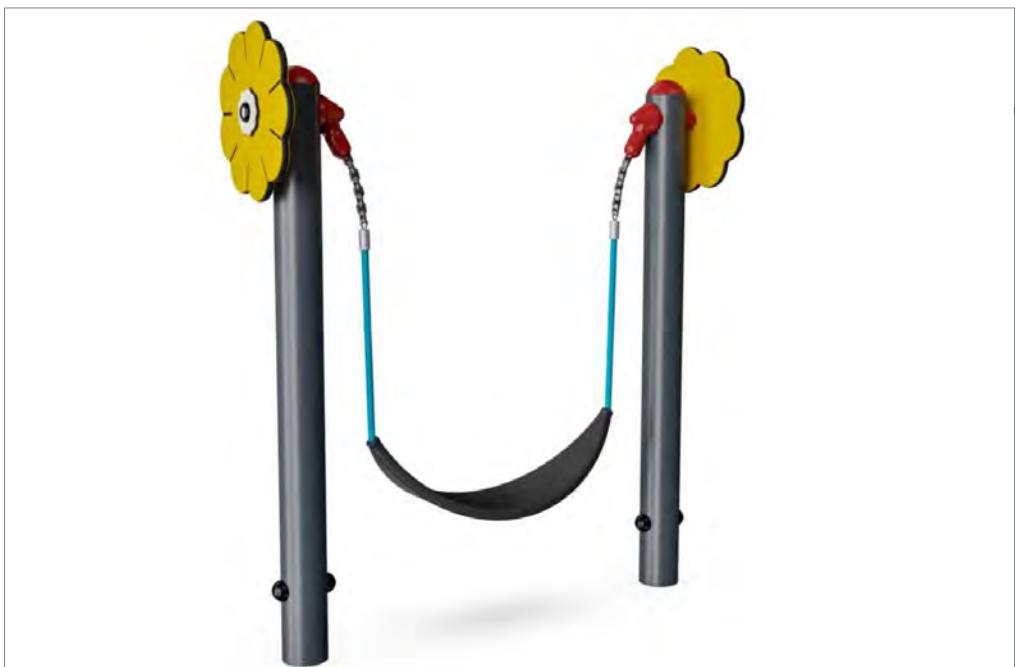
Play Equipment Option 2



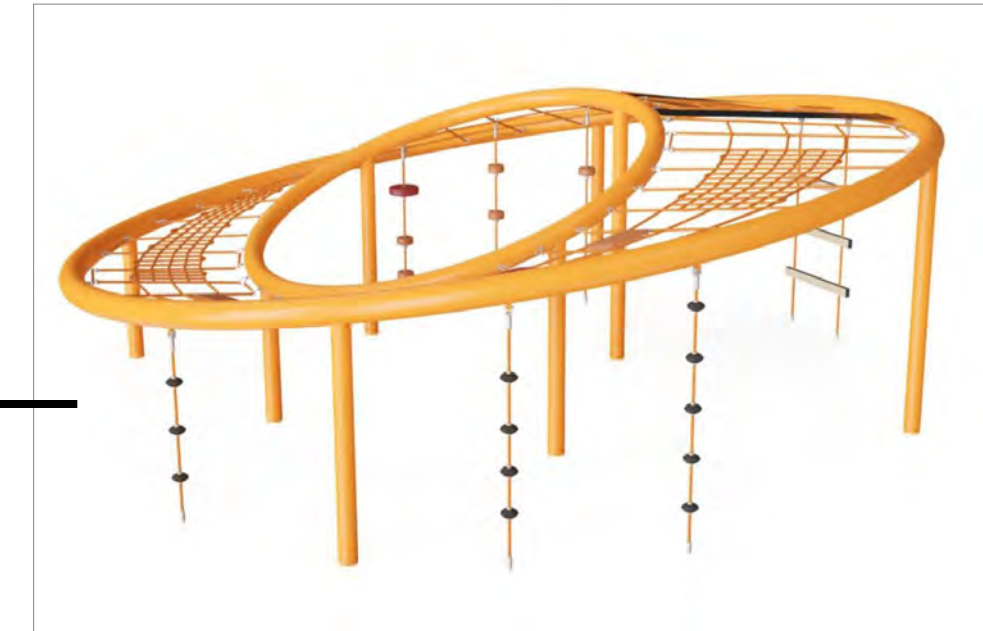
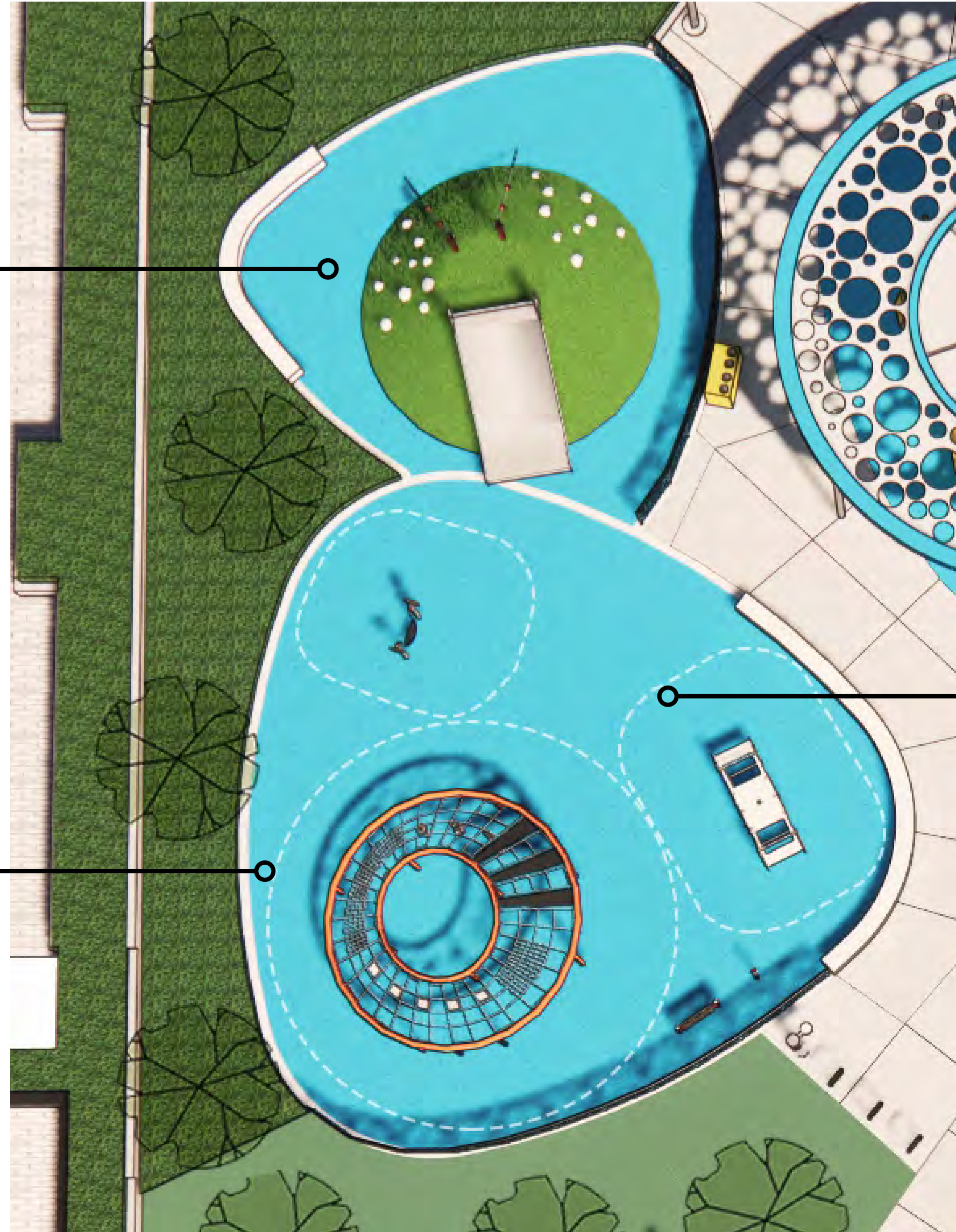
Embankment Slide



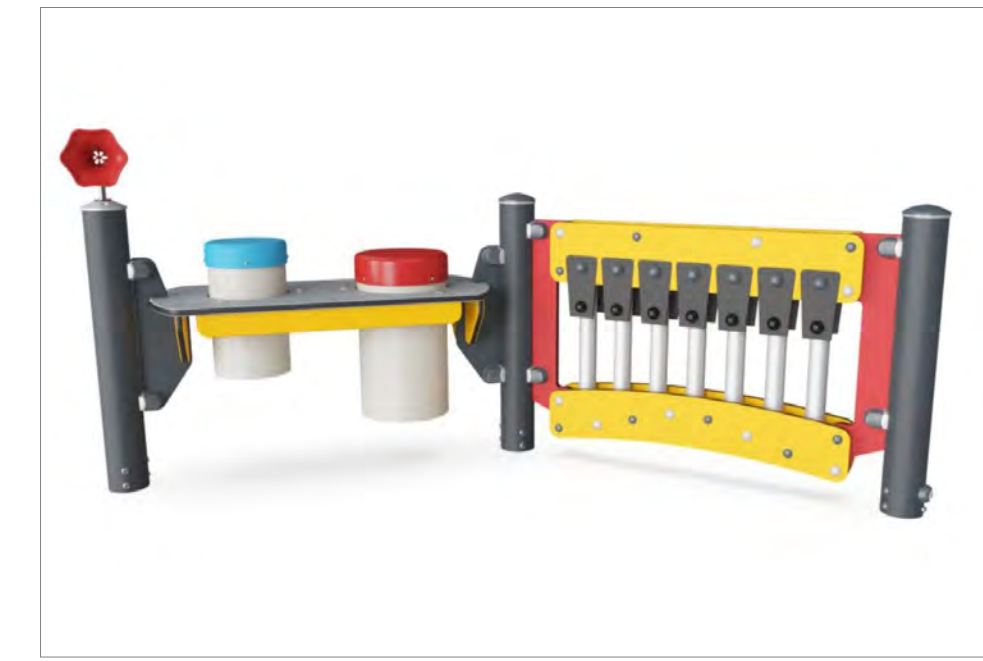
Hill Climber Rope



Sunflower Swing



Super Frisbee



Music Play Panel



Seesaw







Q&A

Design Feedback

We want to hear your input!

What do you like about the overall concept designs and playground options?

Is there anything missing?

Do you have a preference on:

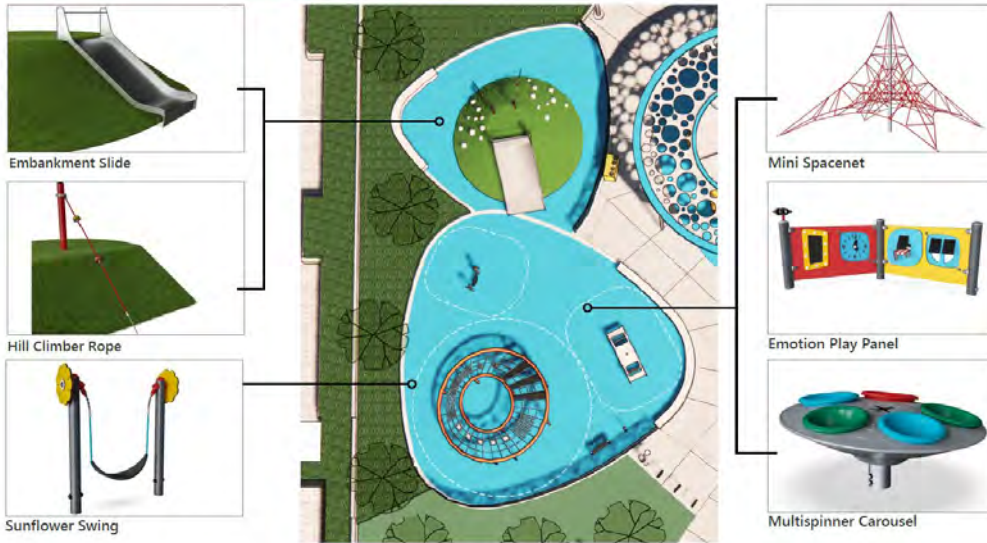
- Playground Equipment Option 1 and Option 2
- Colour Schemes for Playground Equipment

Do you have any questions of clarification?

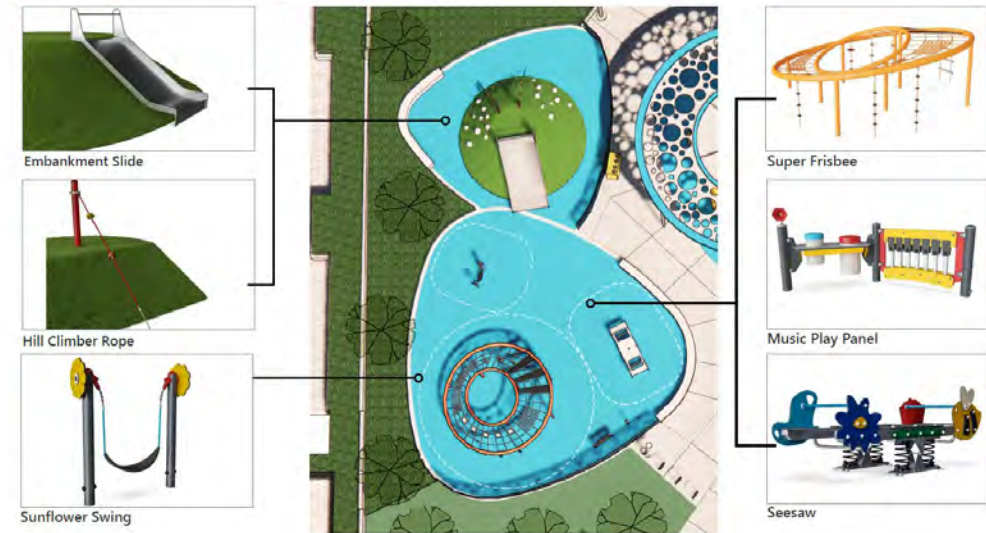
Design Discussion – Playground Equipment Options

We want to hear your input!

Play Equipment Option 1



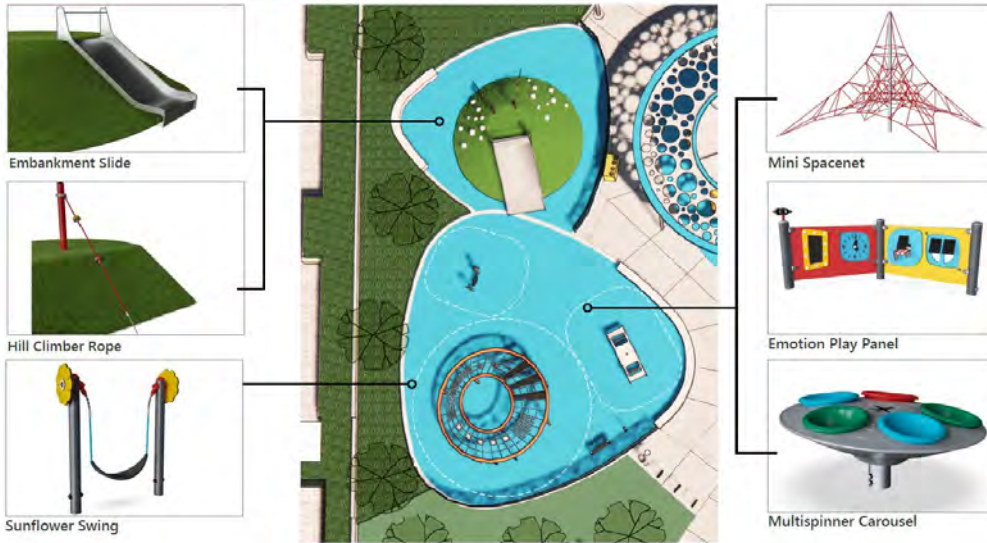
Play Equipment Option 2



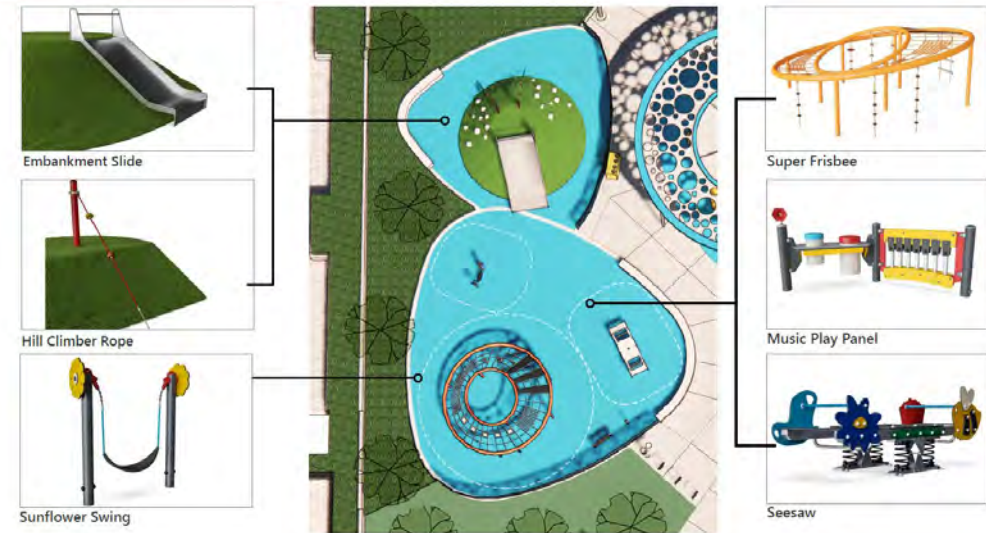
Design Discussion – Playground Equipment Options

We want to hear your input!

Play Equipment Option 1



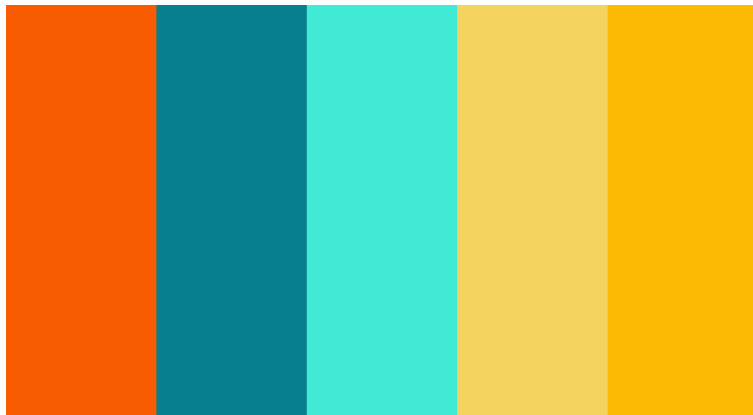
Play Equipment Option 2



Design Discussion – Play Equipment Colour Options

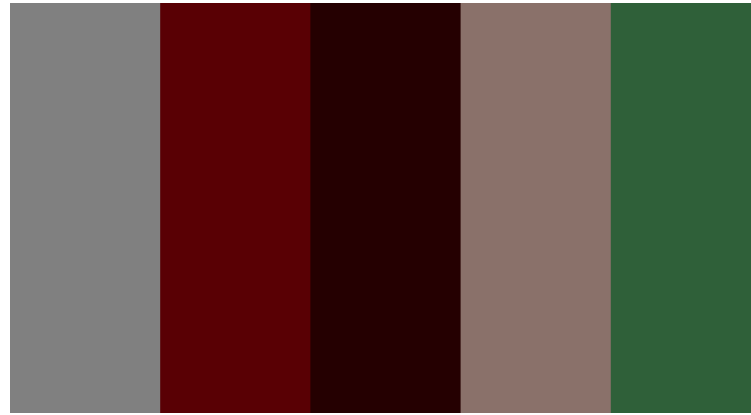
We want to hear your input!

Bright and Vibrant



Blue, teal and yellow

Natural



Green, brown and grey

Playful



Purple, yellow and blue

Design Discussion – General Comments

We want to hear your input!



Aerial perspective from Doris Avenue.



Aerial perspective from Holmes Avenue.

Next Steps

Visit the project webpage at www.toronto.ca/25HolmesPark to:

- Share your feedback through the online questionnaire Sunday, December 11th!
- Sign up for e-updates
- Access this presentation and a meeting summary when available

Email any additional input to Jessica.Chan@toronto.ca by December 11th!

HAVE A NICE DAY

 **TORONTO** Parks & Recreation