

# Jane-Finch Initiative

## Public Meeting #1

November 23, 2020

6:30 – 8:00 p.m.

via Webex Events



# Having issues with the audio?

Dial: **416-915-6530**

When prompted for a meeting number enter  
access code: **177 533 6042**





**This meeting is being recorded. If you require a copy of this recording, please contact City staff at [janefinch@toronto.ca](mailto:janefinch@toronto.ca)**

Please be aware that this meeting is being recorded and personal information, such as your opinions, statements and voice will become part of a public record. Under section 27 of the Municipal Freedom of Information and Protection of Privacy Act, records created for the general public do not restrict access and may be made available on the City Planning website. Your registration information will not be disclosed as part of the public record.

# We want to hear from you!

There are several ways you can provide your feedback in the coming weeks:

1. Visit [www.toronto.ca/janefinch](http://www.toronto.ca/janefinch) to access our **EngageTO “Virtual Open House”** where you can watch a video recording of tonight’s presentation and provide feedback on a series of information boards.
2. **Contact City staff** directly at [janefinch@toronto.ca](mailto:janefinch@toronto.ca) to provide your comments or ask questions.
3. Join us for our **Telephone Office Hours** by calling [416-392-9435](tel:416-392-9435) on **Tuesday, November 24th from 9:00 a.m. until 3:00 p.m.**



# Land Acknowledgment

The land we are on is the traditional territory of many nations including the Mississaugas of the Credit, the Anishnabeg, the Chippewa, the Haudenosaunee, and the Wendat peoples. Toronto is home to many diverse First Nations, Inuit and Métis peoples. We also acknowledge that Toronto is covered by Treaty 13 with the Mississaugas of the Credit and is within the territory of the Dish With One Spoon treaty.

We are all Treaty people. Many of us have come here as settlers, immigrants, newcomers in this generation or generations past. We'd like to also acknowledge and honour those who came here involuntarily, particularly those who are descended from those brought here through enslavement.



# Meeting Agenda



## **Opening remarks (10 minutes)**

- Councillor Anthony Perruzza, Humber River-Black Creek
- Councillor James Pasternak, York Centre



## **Presentation by City Staff (20 minutes)**

- Zahra Joseph-Wilson, City Planning
- Dan Rosen, Economic Development & Culture



## **Facilitated Discussion / Q&A (50-60 minutes)**



# Opening Remarks

**Councillor Anthony Peruzza**

**Humber River-Black Creek**



# Opening Remarks

**Councillor James Pasternak**

**York Centre**

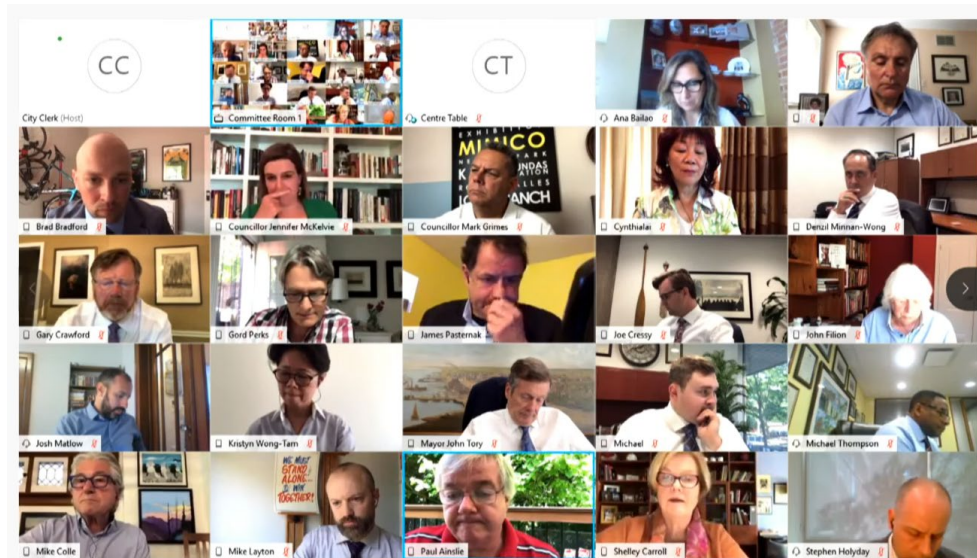




# Our Presentation

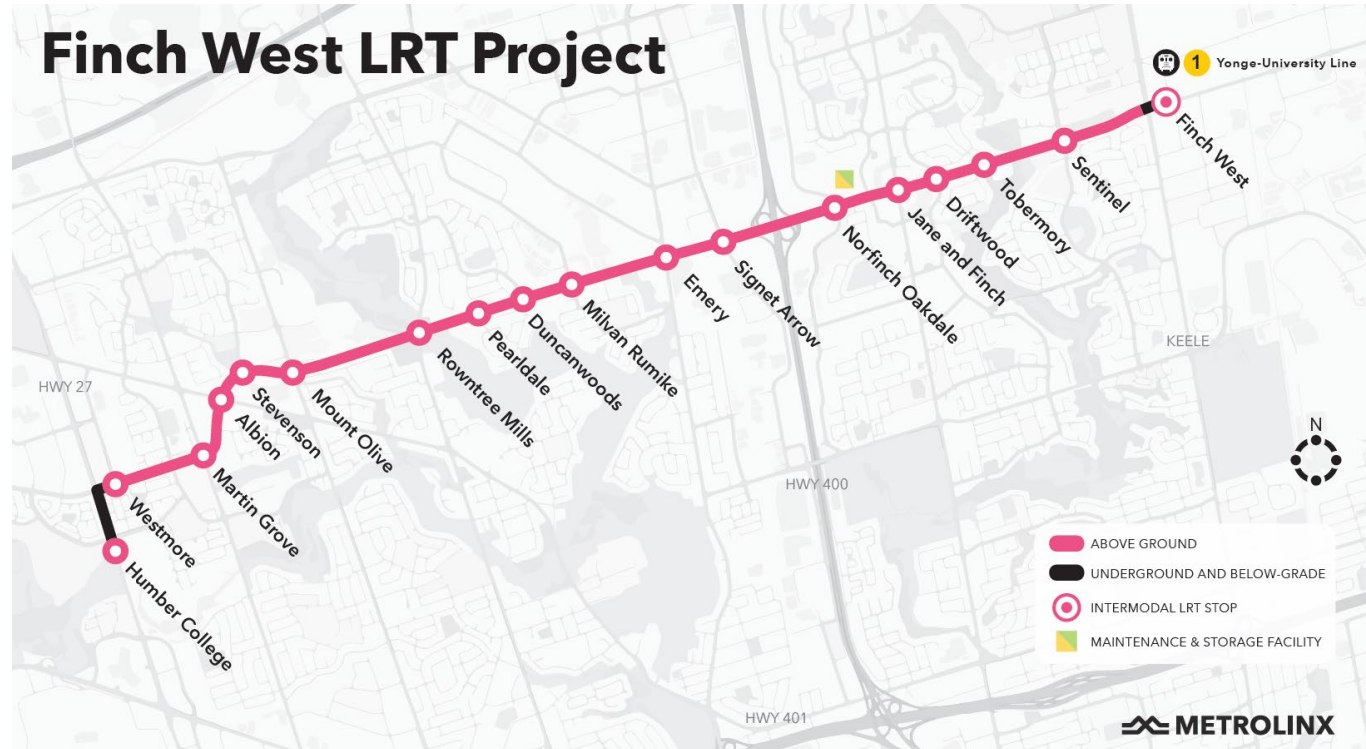
1. Overview of the Jane-Finch Initiative
2. Proposed Phase 1 Community Engagement Approach
3. Next Steps

# City Council Direction – June 29-30, 2020



1. undertake an **engagement process with the community**
2. implement the project through an **inter-divisional approach**
3. report back with a **draft Community Development Plan** and a **summary of community input**
4. report back with a **Proposals Report recommending land use policy directions** and a **summary of community input**
5. establish a **Jane-Finch Community Advisory Committee** composed of a diverse and equitable representation of residents, stakeholders, and business representatives to provide **community oversight and accountability** in the creation of the engagement strategy, Community Development Plan and updated Land Use Planning Framework.

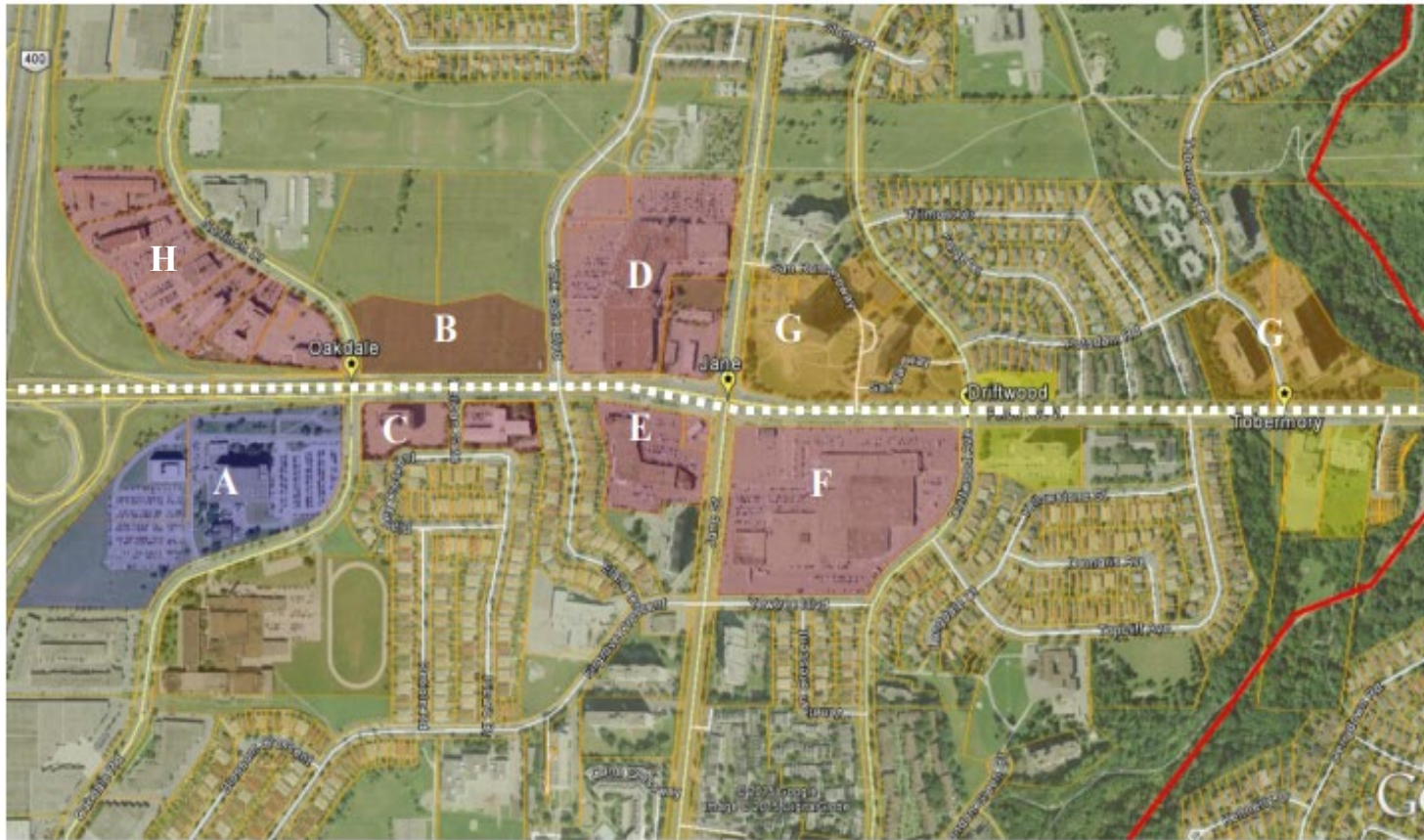
# Why undertake the study?



- Jane and Finch is soon to be on Toronto's rapid transit network (completion scheduled for 2023)
- Development is anticipated, especially near LRT stops
- An opportunity to set a new policy framework to **shape development** and **leverage benefits for local communities**
- Local residents and businesses can shape this future



# Large sites with development potential

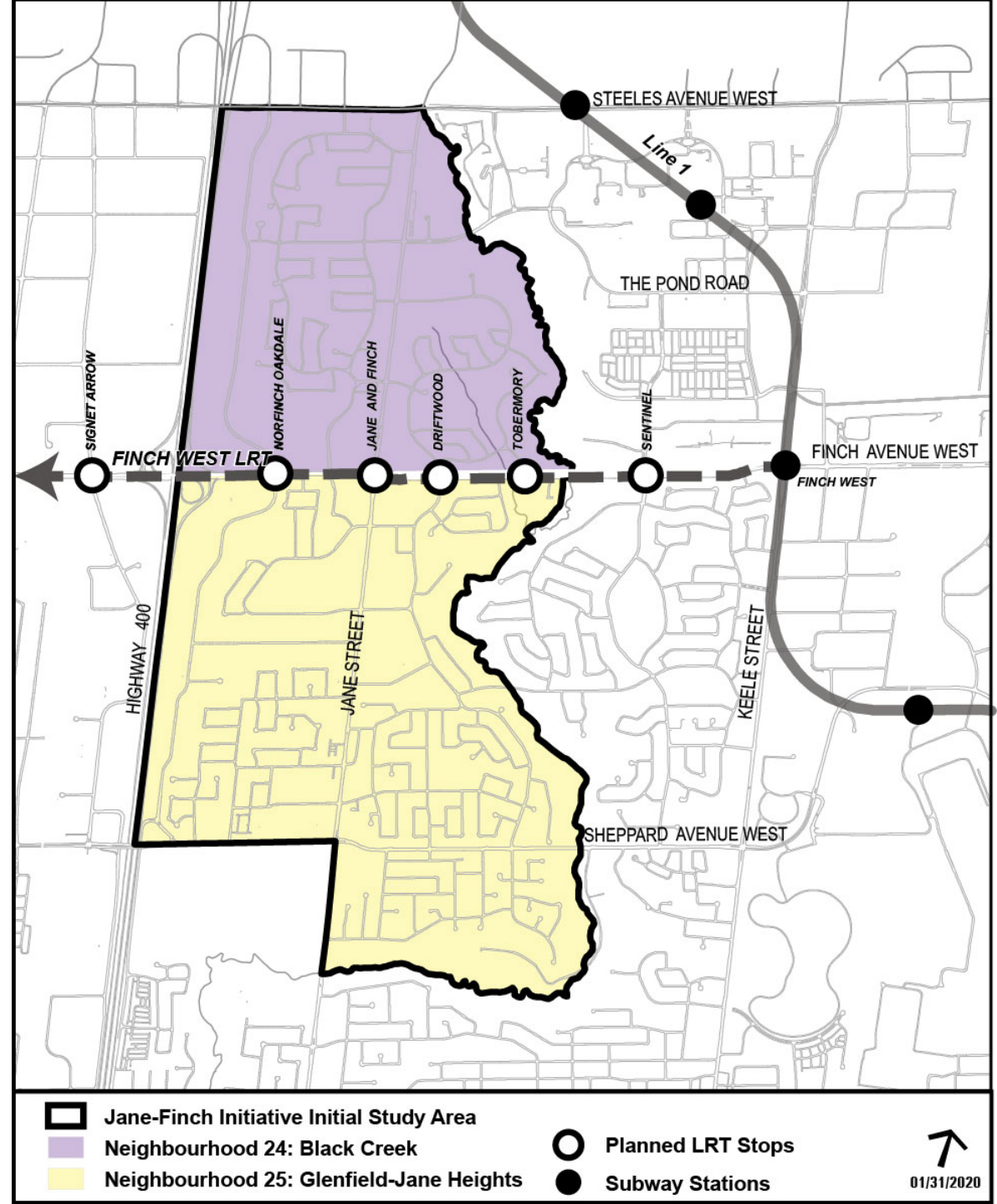


- A. Humber River Hospital and Long Term Care Facility
- B. Metrolinx LRT Maintenance and Storage Facility
- C. Oakdale Professional Centre
- D. Yorkgate Mall
- E. 2013 Finch Ave W (older commercial site)
- F. Jane and Finch Mall
- G. Intensification of Apartment Neighbourhoods
- H. Mixed Use Area – Finch & Norfinch

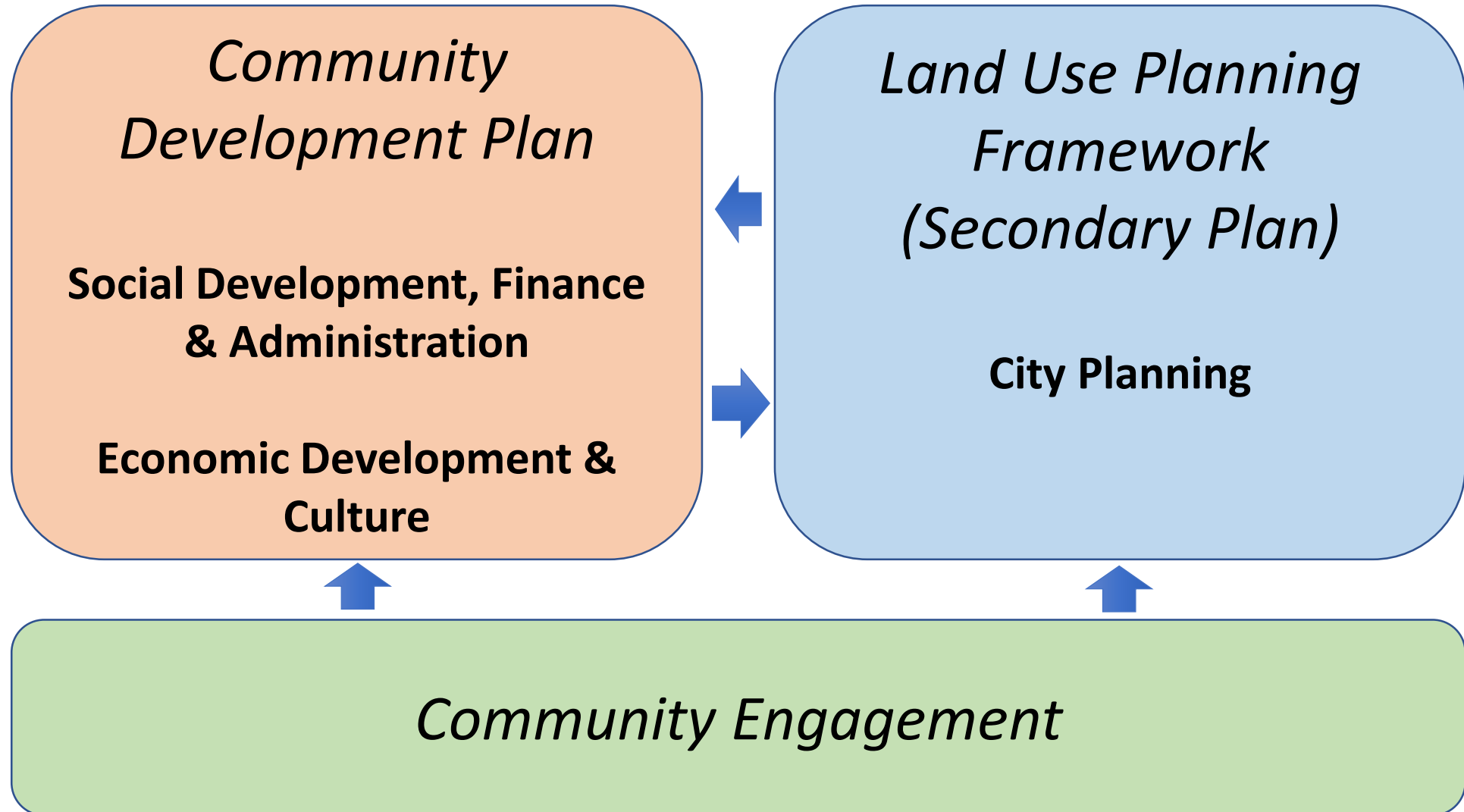
Source: N Barry Lyon Consultants, 2015

# Study Area

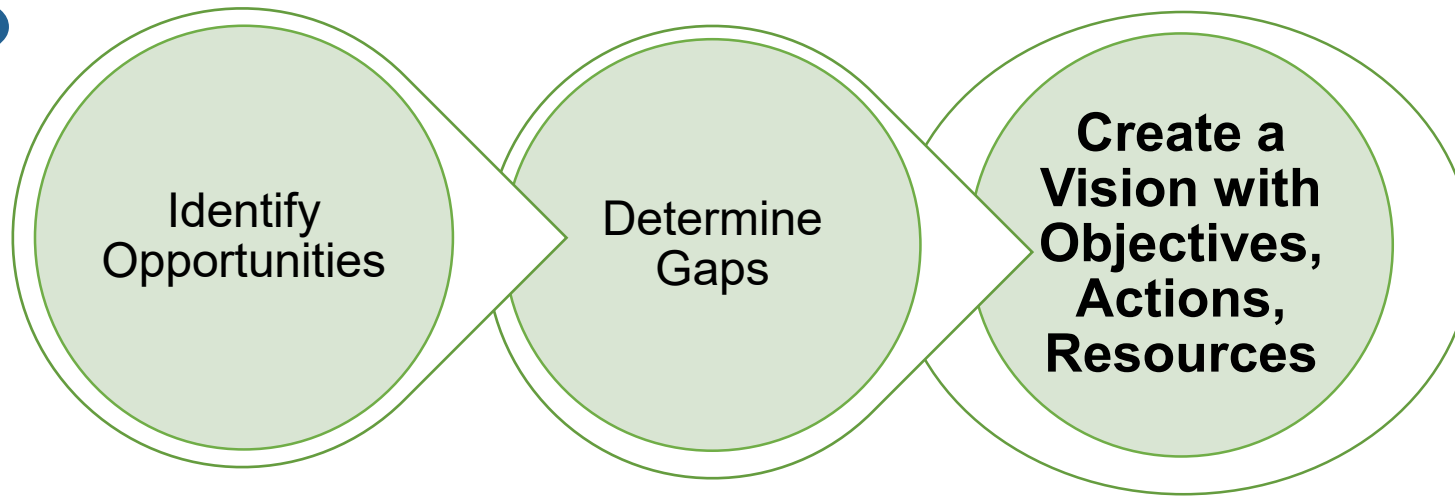
- Neighbourhood 24 – Black Creek
- Neighbourhood 25 – Glenfield-Jane Heights
- 4 LRT Stops:
  - Norfinch/ Oakdale
  - Jane and Finch
  - Driftwood
  - Tobermory



# What are the Study Outcomes and Who Does What?



# What is a Community Development Plan?



- Combines local social and economic development strategies to **guide how communities are supported and affected** when growth and development are anticipated.
- A focus on the **social inclusion** and **civic participation** of residents and other community stakeholders
- Programs, partnerships and initiatives to expand **economic opportunities** for area residents.



# What might be the focus of a Jane-Finch Community Development Plan?



## Social Development

- Accessible programs and services
- Educational opportunities
- Health supports
- Community spaces and safety
- Resident participation in decision making
- Access to healthy food

## Economic Opportunities

- Connecting residents to jobs: access to employment skills, training, certifications
- Entrepreneurship programs
- Local arts and cultural investments
- Local-serving retail
- Business support initiatives
- Community-benefits opportunities





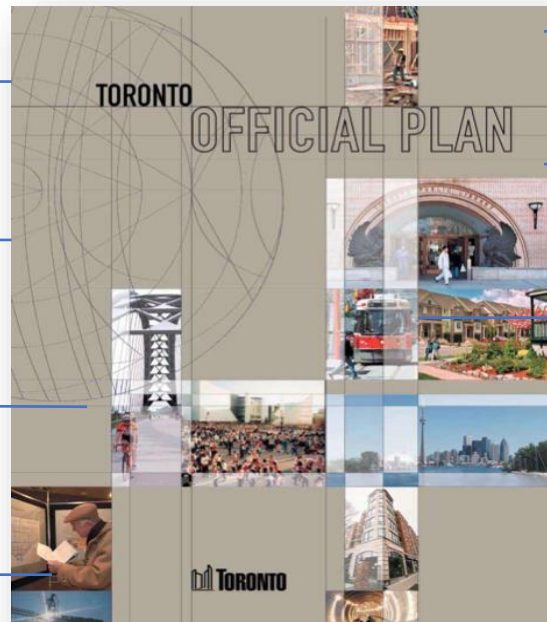
The City's Official Plan is a comprehensive, big picture policy document that guides the use of land, the scale and form of development, the transportation network, heritage preservation, our parks and natural areas, community infrastructure and many other aspects of quality of life in our city. It helps us answer questions such as:

# Where should the city grow?

## How will we build transit-supportive, complete communities?

## How can we support walking and cycling?

Are there enough parks?  
How can public places be  
improved?



- How should new buildings relate to their surroundings?

## How do we protect our heritage resources?

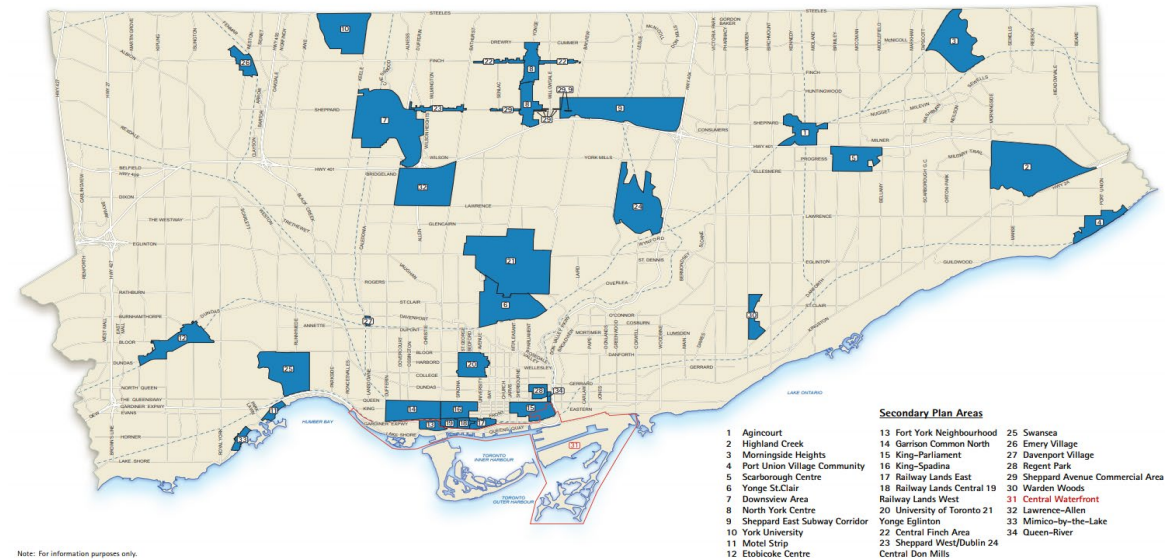
## How do we grow the City's affordable housing and rental housing stock?

## What kind of community facilities are needed?

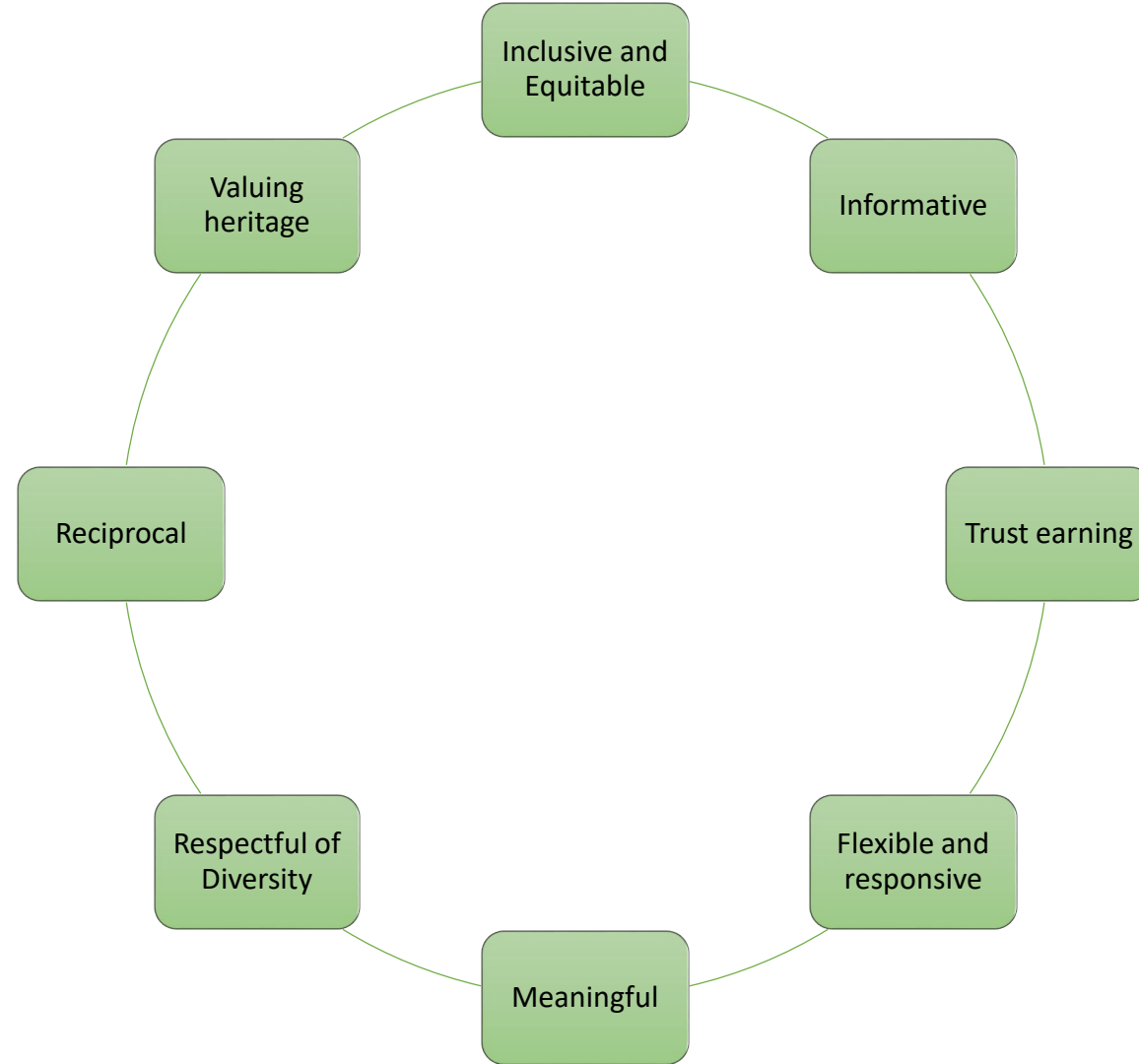
## What can we do to support inclusive economic prosperity?

# What is a Secondary Plan?

- A detailed plan that establishes **local development policies** to guide growth and change
- Builds on the city-wide Official Plan by providing more specific **context-sensitive direction** in a defined area of the city.
- **Guides development** and **identifies supporting public infrastructure** –such as parks, transportation, community facilities – for an area
- A secondary plan does not provide details on specific developments, but sets out **how development may occur**.

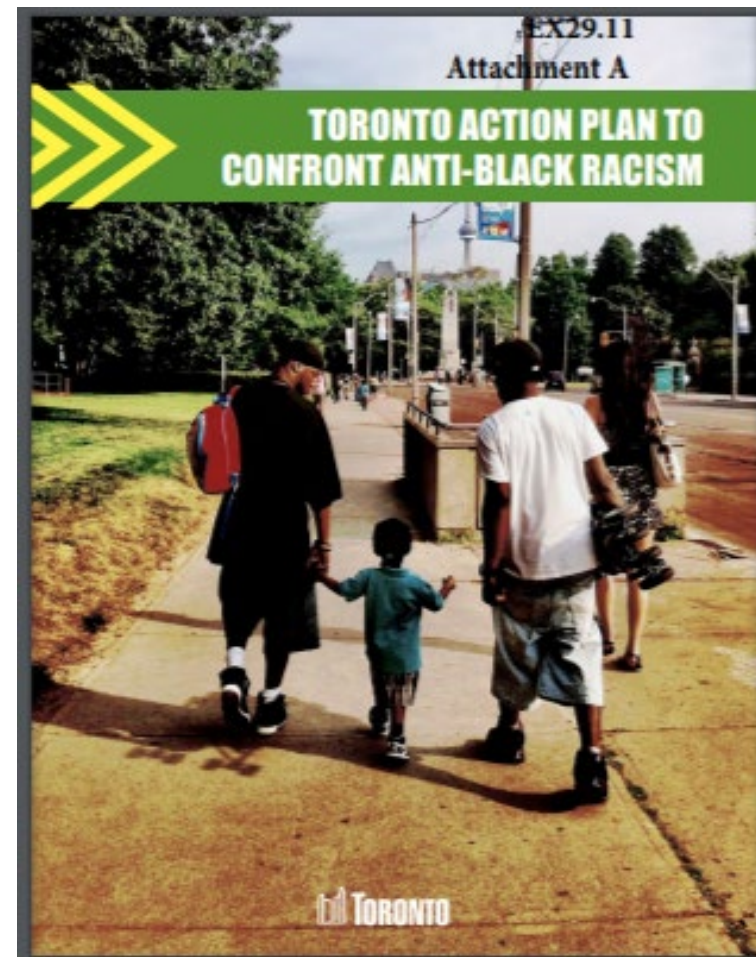


# Proposed guiding principles for engagement

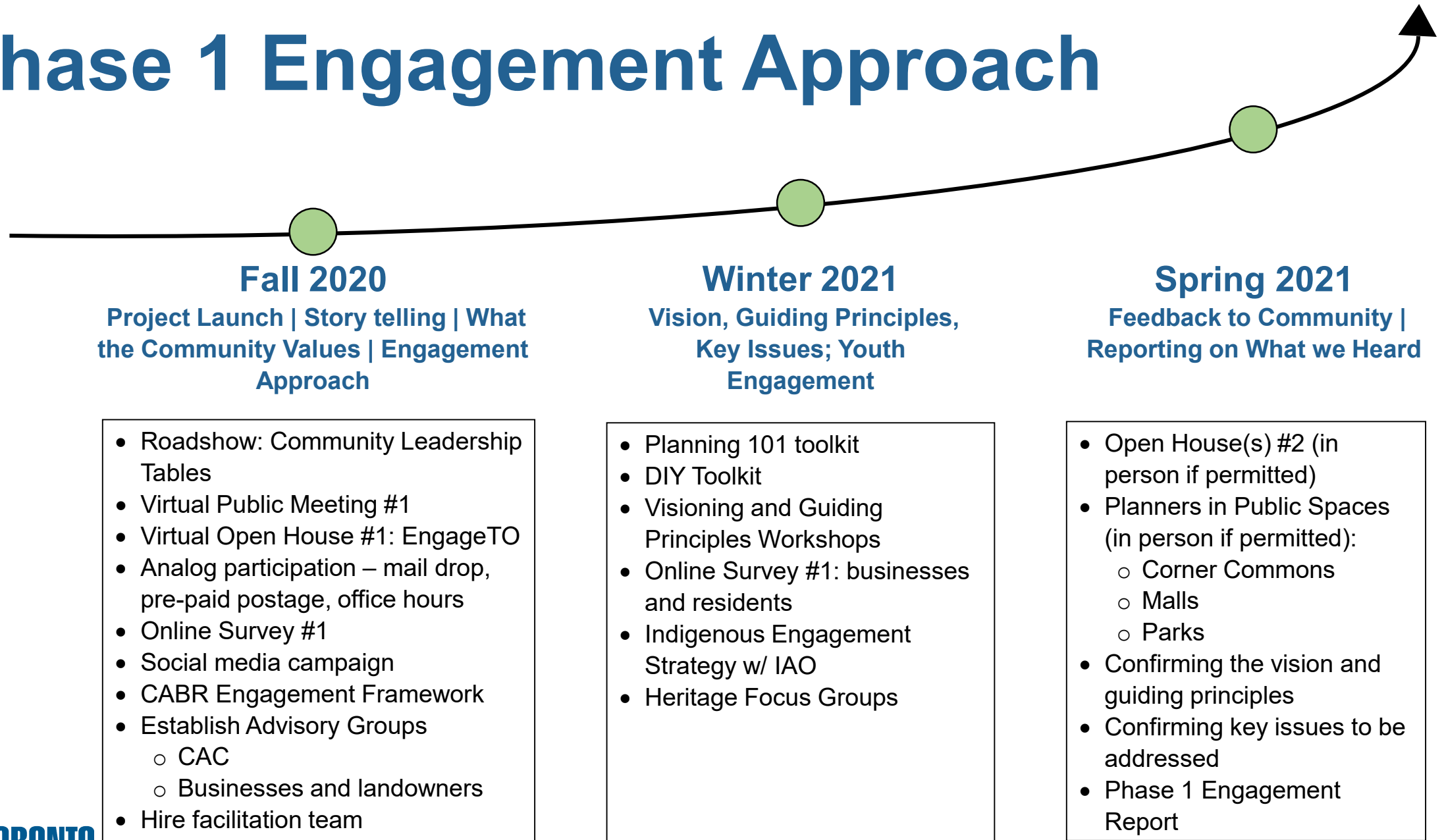


# Confronting Anti-Black Racism (CABR)

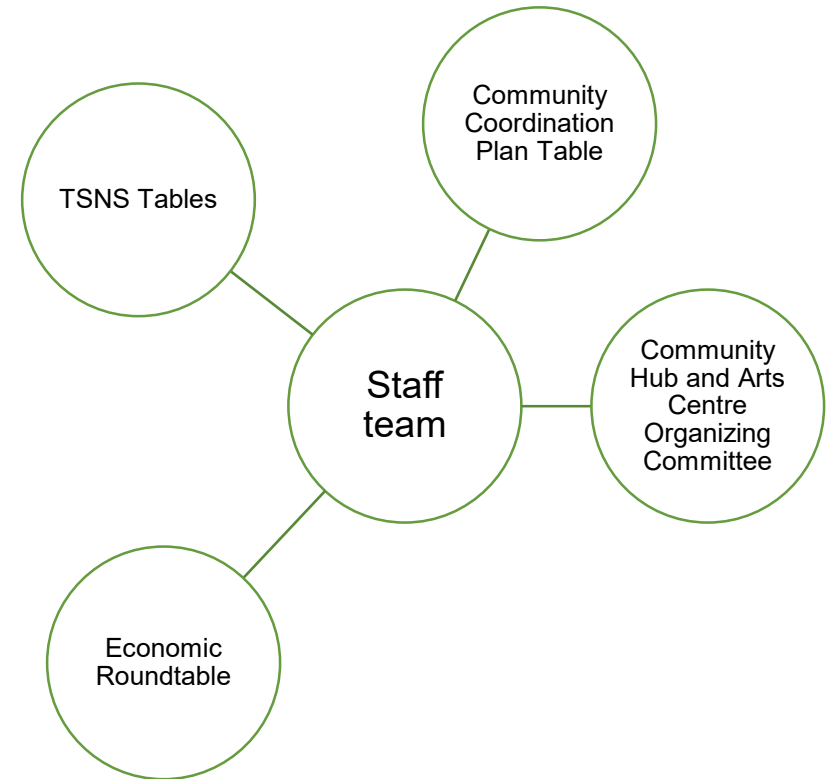
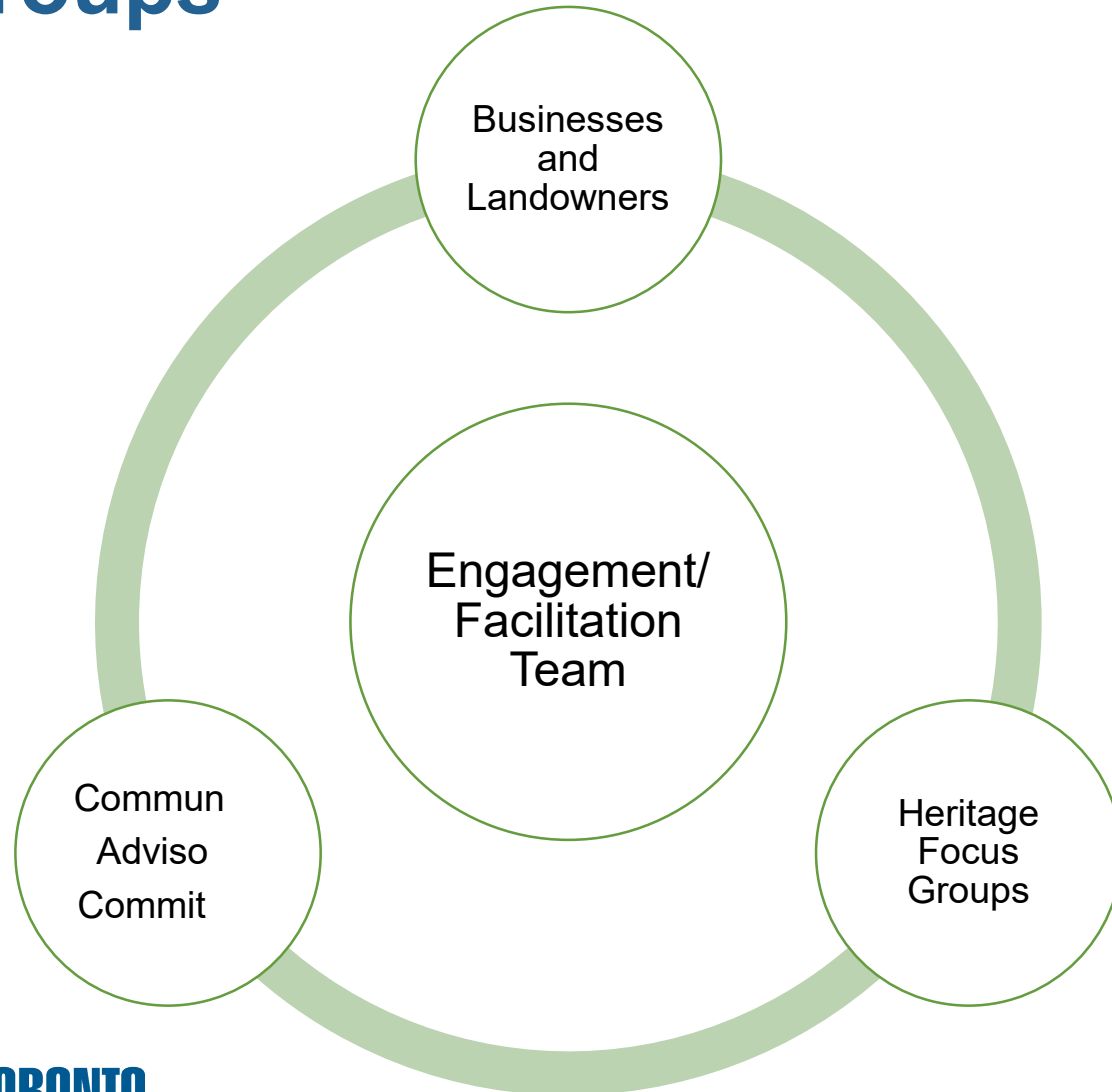
- The City's CABR Unit oversees implementation of the Toronto Action Plan to Confront Anti-Black Racism. It calls for **improved engagement** of Black communities and a **more inclusive approach to the city building** processes
- In early 2020, staff and Jane-Finch **community leaders co-designed a set of Guiding Principles** and terms of reference for the respectful engagement of Black communities across the city, with particular emphasis on the Jane-Finch area.
- The Jane-Finch Initiative is also aligned with **Growing in Place**, which is researching the destabilizing impacts (including displacement) that transit expansion can have among Black residents and businesses in Toronto.



# Phase 1 Engagement Approach



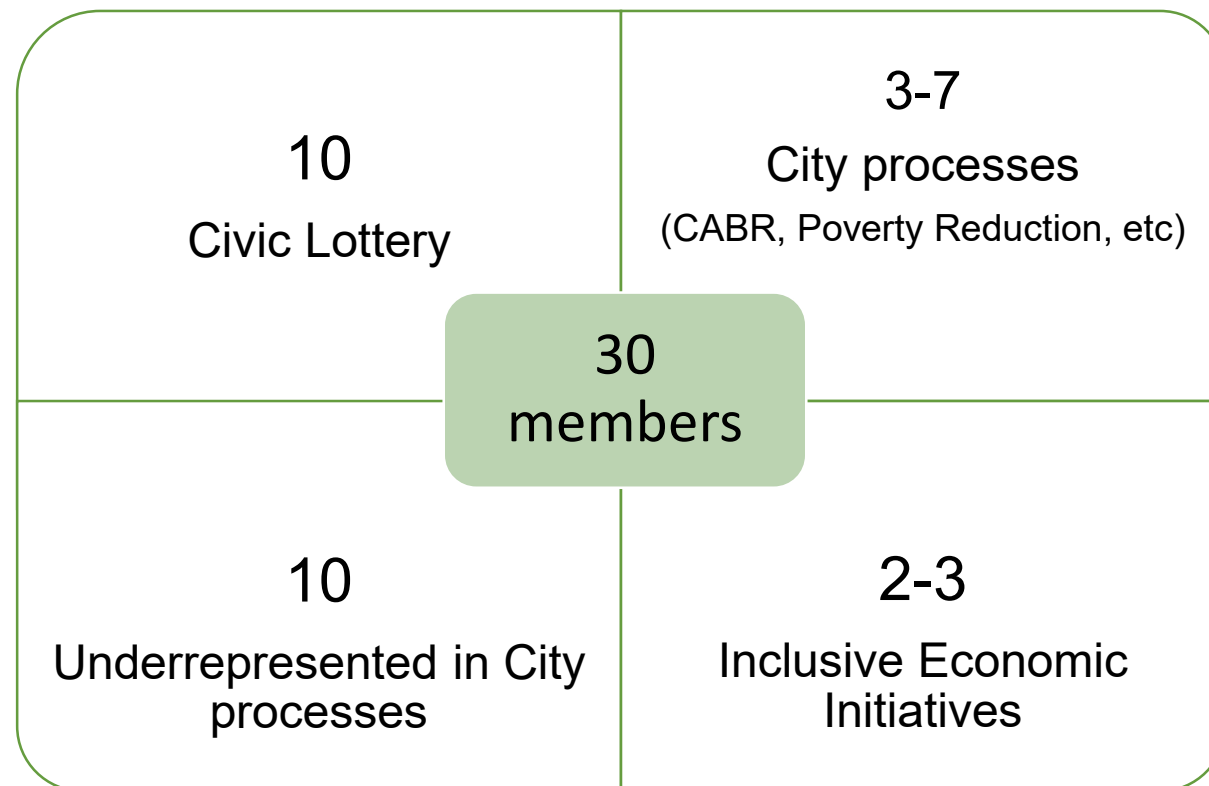
# Community Advisory Committee & Other Stakeholder Groups





# Community Advisory Committee (CAC): Initial Thoughts

- Forum for a **diverse and equitable representation** of residents to guide the Jane-Finch Initiative Project Team
- Members invited to join for the **duration of the Initiative**, expected to be completed by end of 2022
- Members to be provided with **honoraria** for their participation



# EngageTO Platform

- Engagement platform that allows the public to provide feedback in a number of ways
- Fully interactive format that can capture community input on content and policy
- Phase 1 features:
  - Virtual open house (community input on boards)
  - Lived experience (“My Jane-Finch Story”)
  - Mapping your Jane-Finch ideas for the present and future
  - Input to Vision statement and guiding principles



## Virtual Public Meeting

We invite you to attend a **virtual meeting on November 23, 2020 from 6:30 – 8:00 p.m.** to learn about the planning process, ask questions of the project team and provide your input to shape future phases of the Jane-Finch Initiative. If you wish to participate by phone instead, you can call in to the meeting at 416-915-6530 and enter the meeting access code, 177 533 6042.

[Attend the Virtual Meeting](#)

Please note that this meeting will be recorded.

## We want to hear from you!

City Council requested staff to commence a collaborative community planning and associated resident, stakeholder and indigenous engagement process in the Jane-Finch area at its meeting on June 29<sup>th</sup>, 2020. Now it's time to get to work creating a Community Development Plan and Land Use Planning Framework that integrates people- and place-focused initiatives. The Jane-Finch Initiative is about planning for the future of the area and how best to leverage the investment in light rail transit (LRT) for the benefit of local communities. Help shape the future of your neighbourhood by sharing your ideas.

We want to hear your thoughts on what makes the Jane-Finch community special to you, how you would like to be engaged and what your vision is for the future of the Jane-Finch area.

**Provide your comments and share your Jane-Finch story on this page.**

New to the project? Find more detailed information on the [project page](#).

## Learn More and Have Your Say

The Jane-Finch Initiative will be carried out in 3 phases, which are outlined broadly on the right. In Phase 1, staff will take stock of existing conditions in the Jane-Finch community and we will need to understand what you see as issues and opportunities to be addressed in the planning process. Below you'll find various ways you can engage and information boards on the project's Social Pinpoint page. You'll be able to drag a pin to comment directly on the content, tell us about the spaces you value most in the community and share your ideas for the future.

For more information visit the [project page](#) or contact the Project Team at [janeфинch@toronto.ca](mailto:janeфинch@toronto.ca).

[View the information boards from the virtual public meeting held on November 23 here.](#)

## Initiative Timeline

- ✓ Project Initiation: June 2020
- Phase 1: Taking Stock and Analysis
- Phase 2: Developing Options
- Phase 3: Towards Implementation
- Final Report

## My Jane-Finch Story is...


As part of the Jane-Finch Initiative, we are reflecting on the unique power of storytelling and its connections to heritage and place. We are gathering stories from the community about its past and what makes Jane-Finch special today before we collectively plan for the future. We want to hear from you – tell us your Jane-Finch story! To share a video story, please email the file to Project Team at [janeфинch@toronto.ca](mailto:janeфинch@toronto.ca).

Search for Stories

Show Topics: ☒ Housing ☐ Community Heritage ☐ Arts and Culture ☐ Community Places and Spaces ☐ Growing in Place ☐ Community Programs


Number of Results: 3 [Tell us your Jane-Finch story](#)

community art spaces




Amet volutpat consequat mauris nunc congue nisi. Cursus turpis massa tincidunt dui ut ornare lectus sit. Nisi tincidunt eget nullam non

SAMPLE STORY TITLE



From town about and experience

bike riding through the neighbourhood





# In Focus: Proposed Jane-Finch Community Hub and Centre for the Arts

The **Maintenance and Storage Facility (MSF)** for the Finch West LRT provides an opportunity for a community facility in the area.

**Community advocacy** led to Metrolinx agreeing to convey to the City of Toronto a 32-metre deep x 274-metre wide setback

A **community-led engagement process developed a vision** for a "community-driven, community-operated multipurpose facility that supports creative, social, recreational, and entrepreneurial programs for residents of the Jane-Finch neighbourhood and beyond.

City staff are connected with the **Jane-Finch Community Hub and Centre for the Arts Organizing Committee** to ensure that the hub is included in the Jane Finch Initiative and its engagement process.



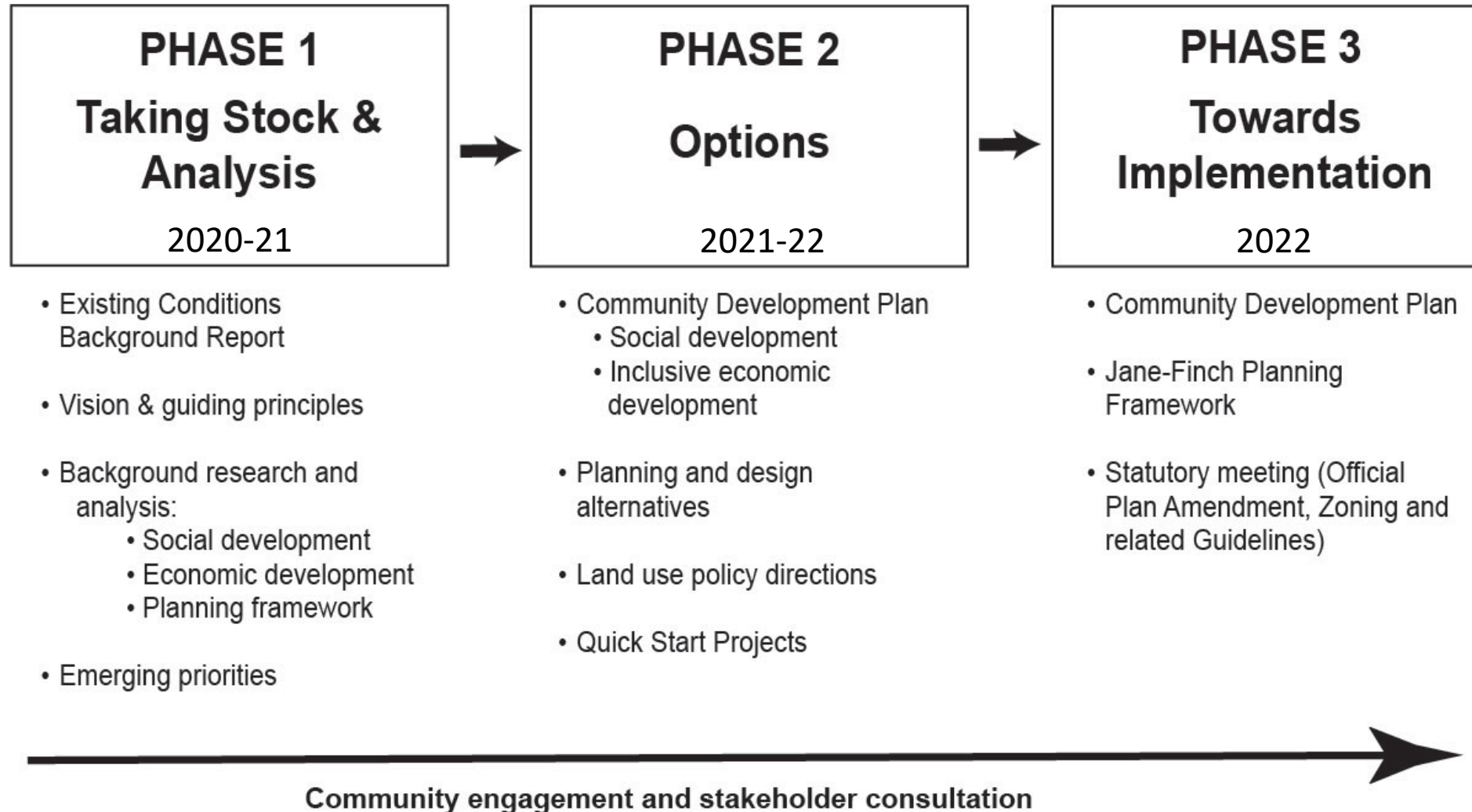
## Other Aligned Initiatives

**RapidTO** – a rapid bus initiative designed to move people more efficiently by improving reliability, speed and capacity on some of the busiest surface transit routes in the city. Jane Street from Eglinton Avenue West to Steeles Avenue West is under consideration for 2021.

**Finch West Goods Movement Plan** – looking at developing approaches to improve commercial shipping and freight transportation in the Finch West area as a result of new changes to local roads due to the Finch West LRT.

**Toronto Community Housing Revitalization** – planning for the revitalization and refurbishment of housing in the Firgrove-Grassways neighbourhood and improvements to community amenities.

# What's Next?



# Facilitated Discussion

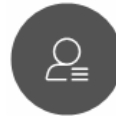


You can ask a question of the panelists verbally or in writing:



## Raised Hand:

1. Open “**Participants**” pop-up screen.
2. Click the **Raised Hand icon** in the bottom right hand corner.
3. When it is your turn, the facilitator will call your name, un-mute you and invite you to ask your question. Afterward, **please lower your hand.**



*Note: If calling in, dial \*3 to raise/lower your hand.*

## Q&A:

1. Click on the **circle with the dots** and select the **Q&A** pop-up screen.
2. Type in your question. Be sure to address it to “**All Panelists**” by clicking the drop-down menu on the top.
3. When it is time for your question, the facilitator will read it out loud.



# Panelists available for Q&A

## Councillors

- Councillor Anthony Perruzza, Humber River-Black Creek
- Councillor James Pasternak, York Centre

## City Planning

- Andrew Farncombe, Strategic Initiatives
- Luisa Galli, Community Planning,
- Reynold Caskey, Urban Design
- Samuel Baptiste, Transportation Planning
- Tom Schwerdtfeger, Transportation Planning
- Alex McDonough, Community Policy
- Christine Ono, Housing Policy
- Gary Miedema, Heritage Planning

## Parks, Forestry & Recreation

- Desi Simova, Parks Planning

## Community Development Plan

- John Smith, Community Development
- Aderonke Akande, Tower Renewal and Revitalization
- Dan Rosen, Economic Development & Culture
- Andrea Raymond-Wong, Arts & Culture Services
- Imara Rolston, Confronting Anti-Black Racism

## Aligned Initiatives

- Sundus Balata, Toronto Community Housing
- Ryan Glenn, CreateTO
- Luiza Sadowski, Metrolinx
- Adolphus Wilson, Metrolinx
- Frank Panacci, Transit Expansion Office

# Q&A Guidelines

- We will call on one voice/question at a time.
- Please be direct and frame your question to specific speakers as appropriate.
- Please be brief and limit yourself to one question or comment at a time so others can speak, too. There will be other opportunities to engage.
- Be a good listener and keep an open mind.
- Be respectful. The City of Toronto is an inclusive public organization. Racist or other forms of discriminatory, prejudicial, or hateful comments and questions will not be tolerated.

# We want to hear from you!

There are several ways you can provide your feedback in the coming weeks:

1. Visit [www.toronto.ca/janefinch](http://www.toronto.ca/janefinch) to access our **EngageTO “Virtual Open House”** where you can watch a video recording of tonight’s presentation and provide feedback on a series of information boards.
2. **Contact City staff** directly at [janefinch@toronto.ca](mailto:janefinch@toronto.ca) to provide your comments or ask questions.
3. Join us for our **Telephone Office Hours** by calling [416-392-9435](tel:416-392-9435) on **Tuesday, November 24th from 9:00 a.m. until 3:00 p.m.**

