

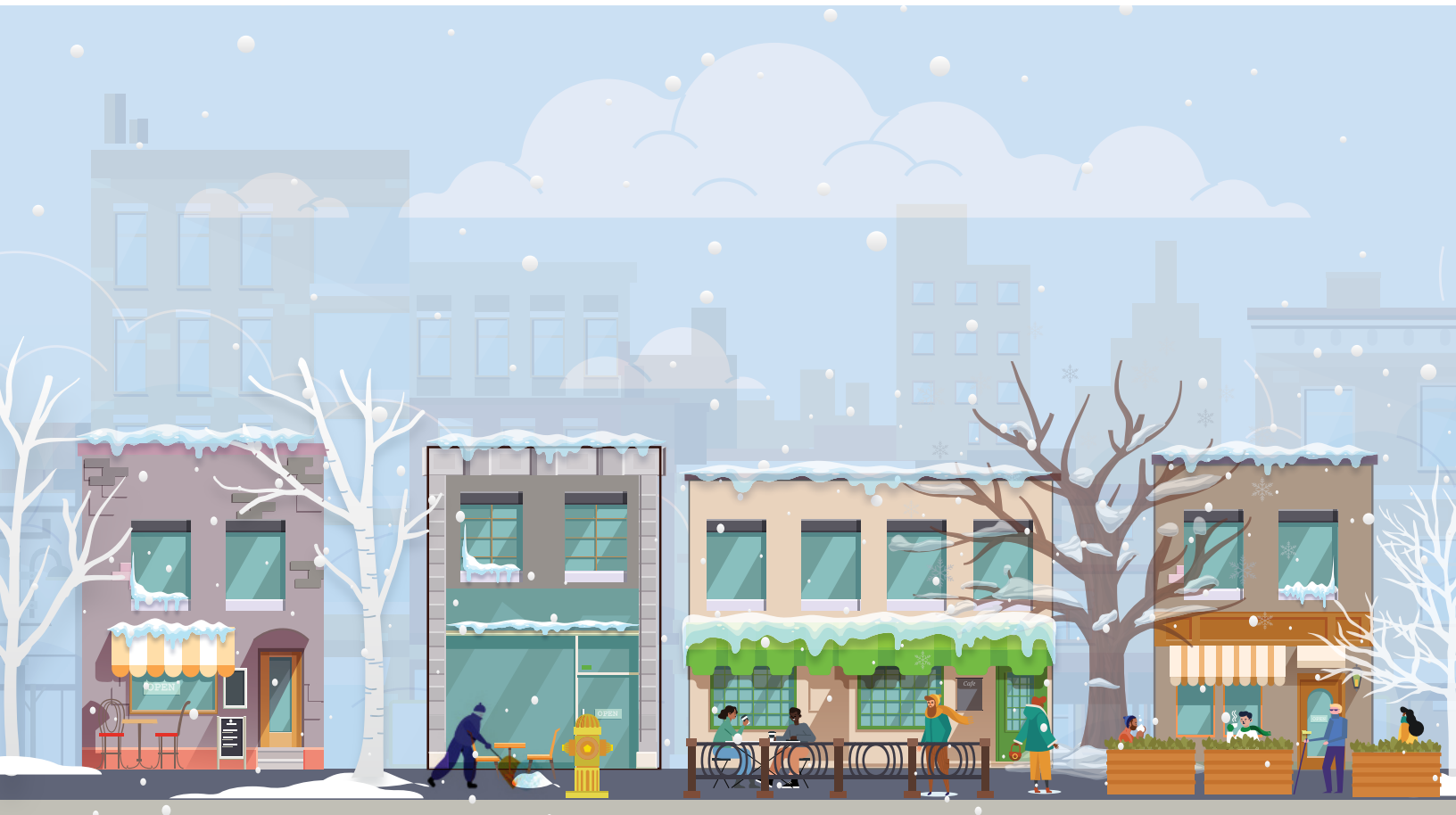
# Winter CaféTO | Sidewalk Placement Guidelines

---

The City of Toronto is offering local restaurant and bar operators streamlined access to public space on city sidewalks to assist with expanding outdoor seating capacity during the winter. Registration for Winter CaféTO is not required.

Any expanded or new cafés on the sidewalk must meet the requirements set out in the guidelines below. Tents, enclosures and other structures are not permitted on the right-of-way.

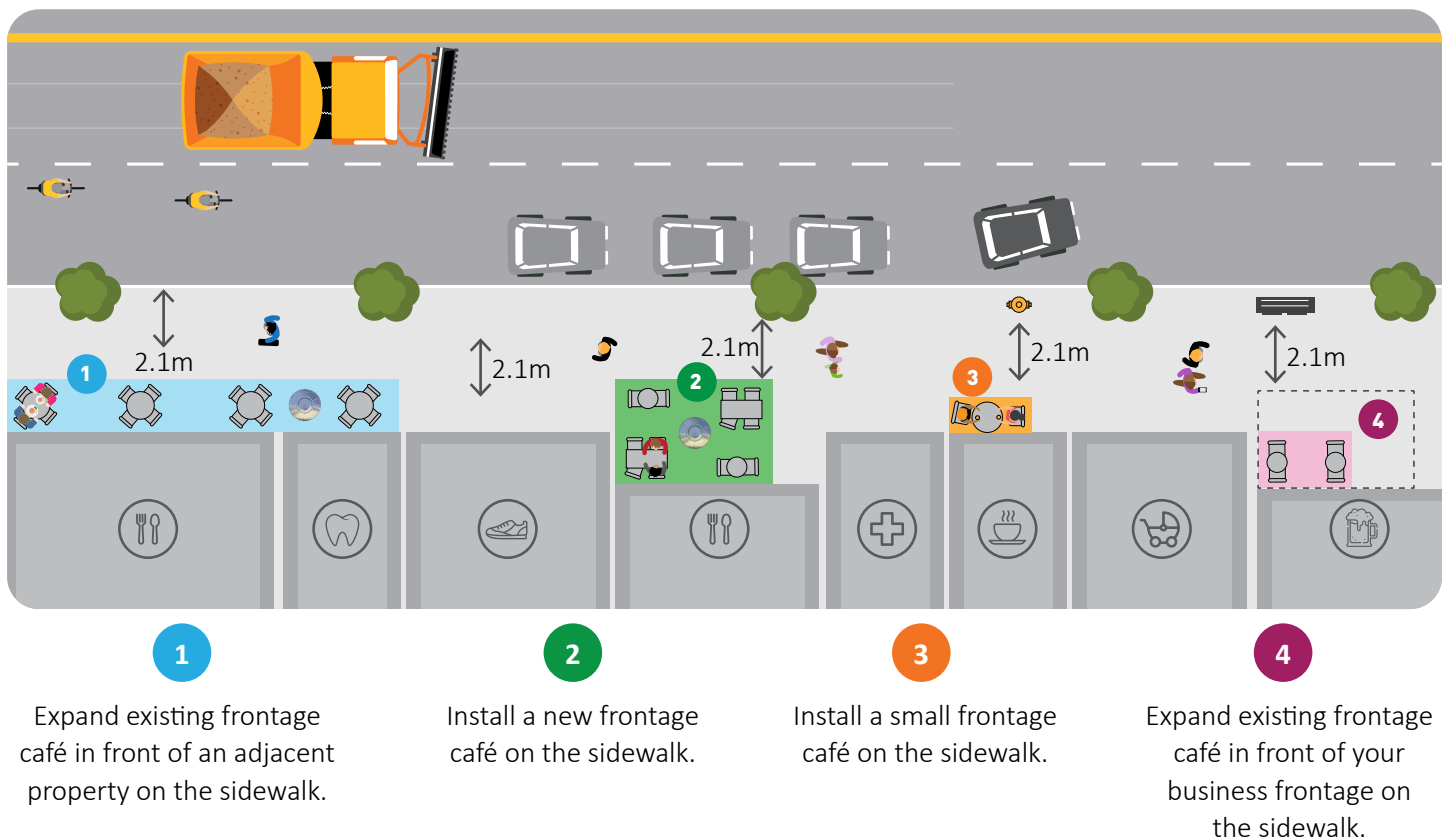
Additional requirements for operating your café throughout the winter months will be released the week of November 9. Please check [toronto.ca/CafeTO](https://toronto.ca/CafeTO) regularly for updates.



## Sidewalk Frontage Cafés

### All sidewalk cafés must:

1. Not have any tents, enclosures, structures, or visual screens;
2. Ensure that a 2.1 metre pedestrian clearway is maintained at all times;
3. Be at least **1.2 metres** from any fire hydrant and designed so that fire department connections are clearly visible and accessible from the street;
4. Have an unobstructed emergency access route, in conformance with the Ontario Building Code and Ontario Fire Code;
5. Provide a **1.0 metre** clearance from utilities and infrastructure as required for safety, operations and maintenance;
6. Have self-supporting temporary cane-detectable boundaries with a solid base, for people with low to no vision; and
7. Ensure waste management collection operations (including both residential/commercial garbage collection and city-owned litter bins) are not obstructed.



## Curbside Cafés

A curbside café is a café placed in the furnishing zone on the sidewalk, adjacent to the street. Some café operators may be able to access space in the furnishing zone for their dining operations if they meet the requirement to maintain a 2.1 metre pedestrian clearway as well as all required setbacks from the curb and nearest intersections. These additional guidelines must also be met in order to ensure the safety of pedestrians, your customers and staff and road users:

1. All equipment must be set back a minimum of **0.5 metres** from the curb to protect diners, passing cyclists, and to accommodate car door swings in locations with parking;
2. Be no less than **9 metres** immediately after the closest curb edge of an intersection or pedestrian crossing;
3. Be no less than **20 metres** approaching a transit stop, and if there is no transit stop, no less than **15 metres** from the closest curb edge of an approaching intersection or a pedestrian crossover;
4. Be at least **3 metres** from any curb ramp or driveway/laneway; and
5. Not be located within or interfere with transit stop zones, taxi zones, designated accessible parking zones and/or loading zones.



Many online mapping applications, like Google Maps, have a measuring tool that can help you determine the distance of your restaurant to an intersection or transit stop.

