

# New Park at 150 Harrison St

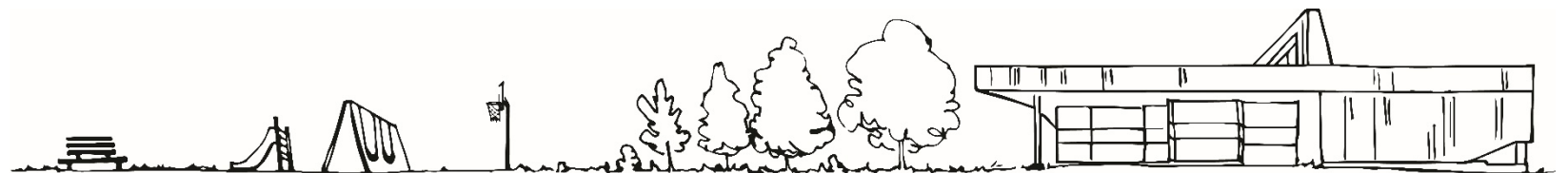
Virtual Public Meeting  
November 12, 2020

WebEx Call In:  
416-915-6530  
133 267 1681 (code)



# Indigenous Land Acknowledgement

We acknowledge the land we are meeting on is the traditional territory of many nations including the Mississaugas of the Credit, the Anishnabeg, the Chippewa, the Haudenosaunee and the Wendat peoples and is now home to many diverse First Nations, Inuit and Métis peoples. We also acknowledge that Toronto is covered by Treaty 13 with the Mississaugas of the Credit.









## **Councillor Ana Bailão**

Ward 9 Davenport

Deputy Mayor for the south area  
of the City



# Agenda

-  WebEx Tips & Introductions
-  Meeting Goals & Project Timeline
-  Online Survey
-  Concept Design Options
-  Questions of Clarification
-  Discussion
-  Next Steps & Adjourn



# Rules of Engagement for a Successful Virtual Meeting



**Mute** your microphone when not speaking.



**Computer audio issues?** Use your cell-phone for audio by clicking Audio Connection, Switch Connection, then Call Me.



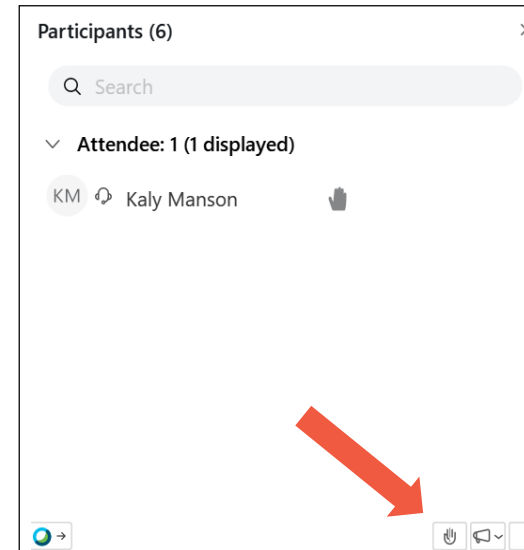
**Use the chat feature to ask questions.** Or click the hand icon, beside your name from the participants list on the right.



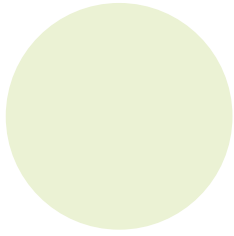
**Hand Raising Function**



**One voice at a time.** If you can, direct questions to specific speakers.

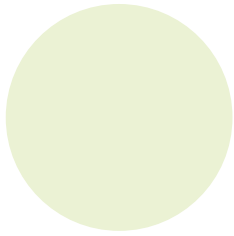


# Introductions



Kaly Manson

Senior Project Coordinator  
City of Toronto PFR



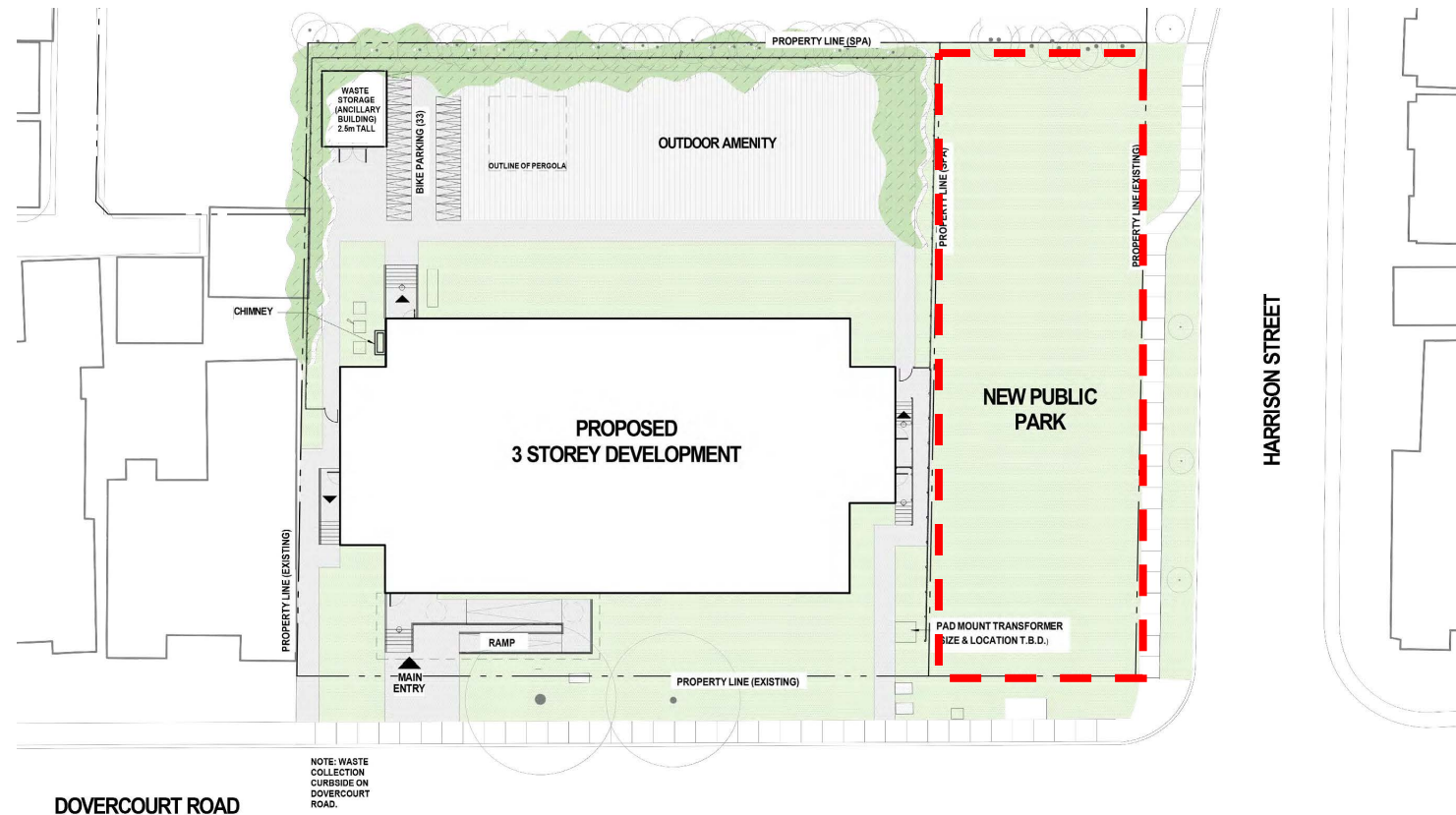
Daniel Fusca

Manager, Public Consultation  
City of Toronto PFR

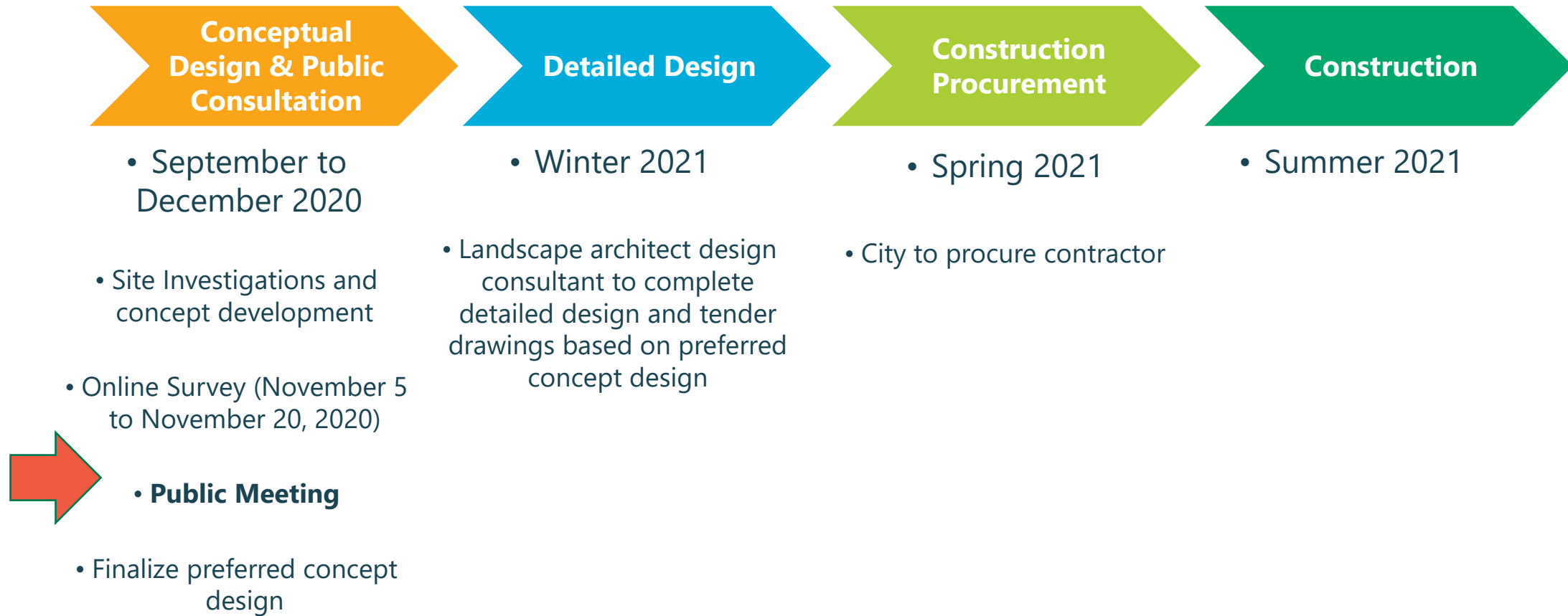


# Meeting Goals

- Present concept design for the future new park at 150 Harrison St and gather feedback from the community



# Project Timeline



# Visioning Survey

November 5 to November 20, 2020

# Visioning Survey

- Open: November 5, 2020
- Close: November 20, 2020
- Access via project webpage:

[www.toronto.ca/150HarrisonPark](http://www.toronto.ca/150HarrisonPark)



## New Park at 150 Harrison Street Visioning Survey

Help us develop a great new park at 150 Harrison Street!

The City of Toronto is building a new park at 150 Harrison Street. The park is part of a new Modular Housing Initiative to connect people experiencing homelessness with homes and appropriate supports to help them achieve housing stability. In this survey, you will be able to provide specific feedback on the proposed concept design and general feedback about what features and amenities you would like to see in the new park. Your answers will help us generate ideas and confirm priorities for the final design of the park.

The survey is divided into three sections:

- A. Vision
- B. Concept Design
- C. Participant Demographics

It will take approximately 15 minutes to complete this survey. If you would rather respond to this survey by telephone, via a paper copy, or if you have other accessibility needs, please contact Kaly Manson at [kaly.manson@toronto.ca](mailto:kaly.manson@toronto.ca) or by phone at 416-338-6641. **Please note that this survey closes on November 20, 2020 at 11:59 pm.**

To learn more, visit the [project webpage](#).

Next »

0% complete



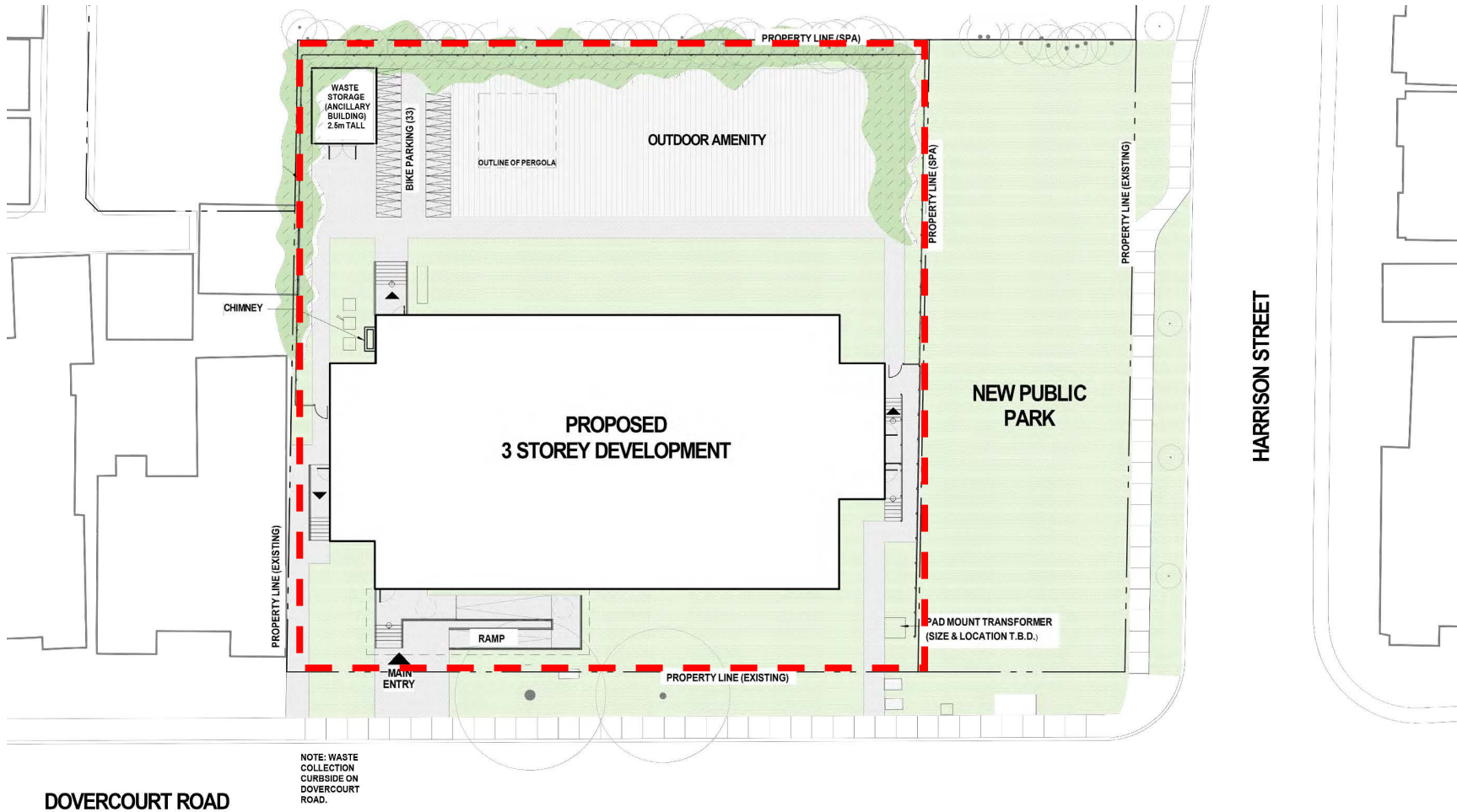
# About the Project

Modular Housing Initiative and New Park at 150 Harrison St

# Modular Housing Development

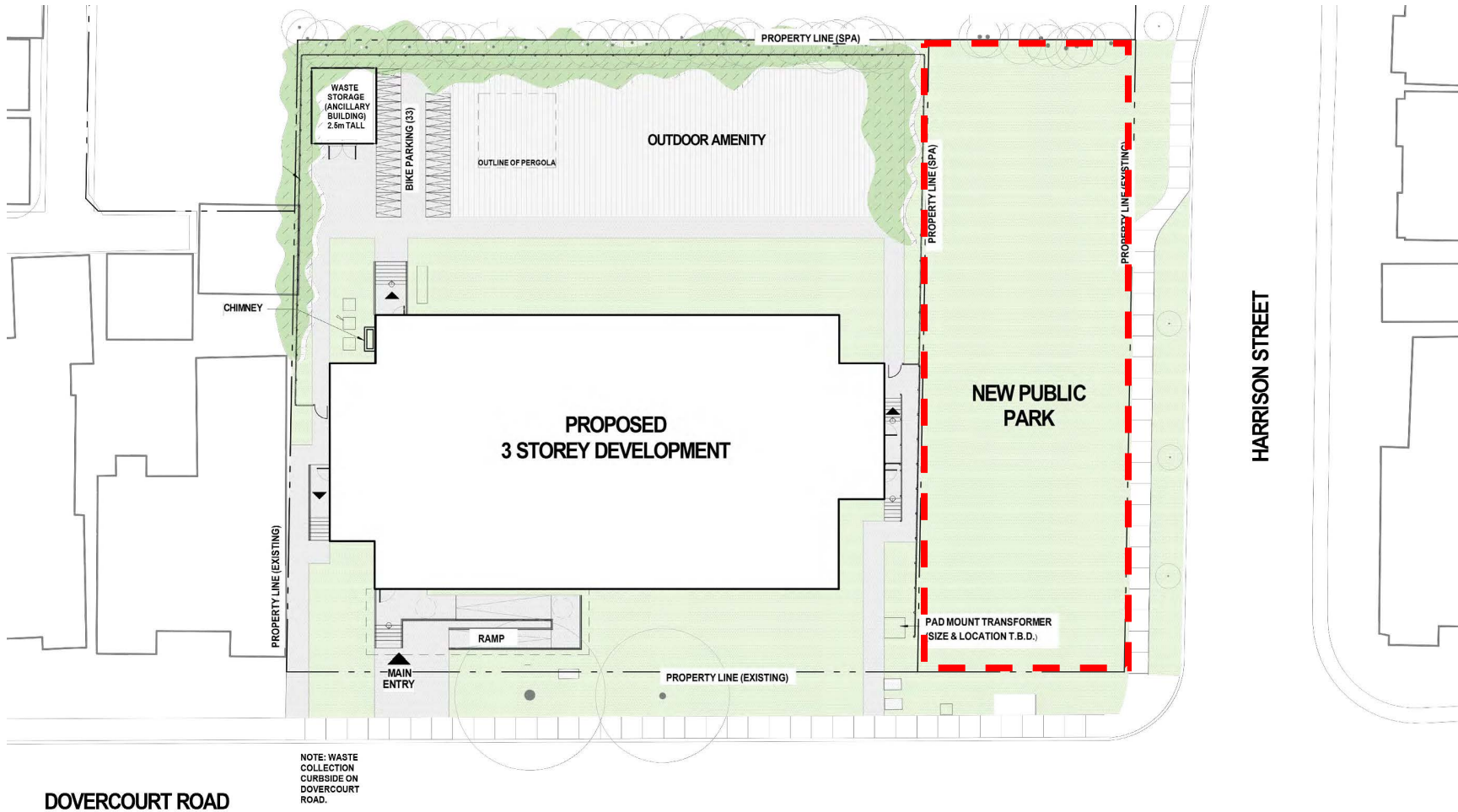


# Modular Housing Development



- 3-storeys
- 44-units
- Outdoor amenity space
- Located at the north end of the site, along Dovercourt Rd

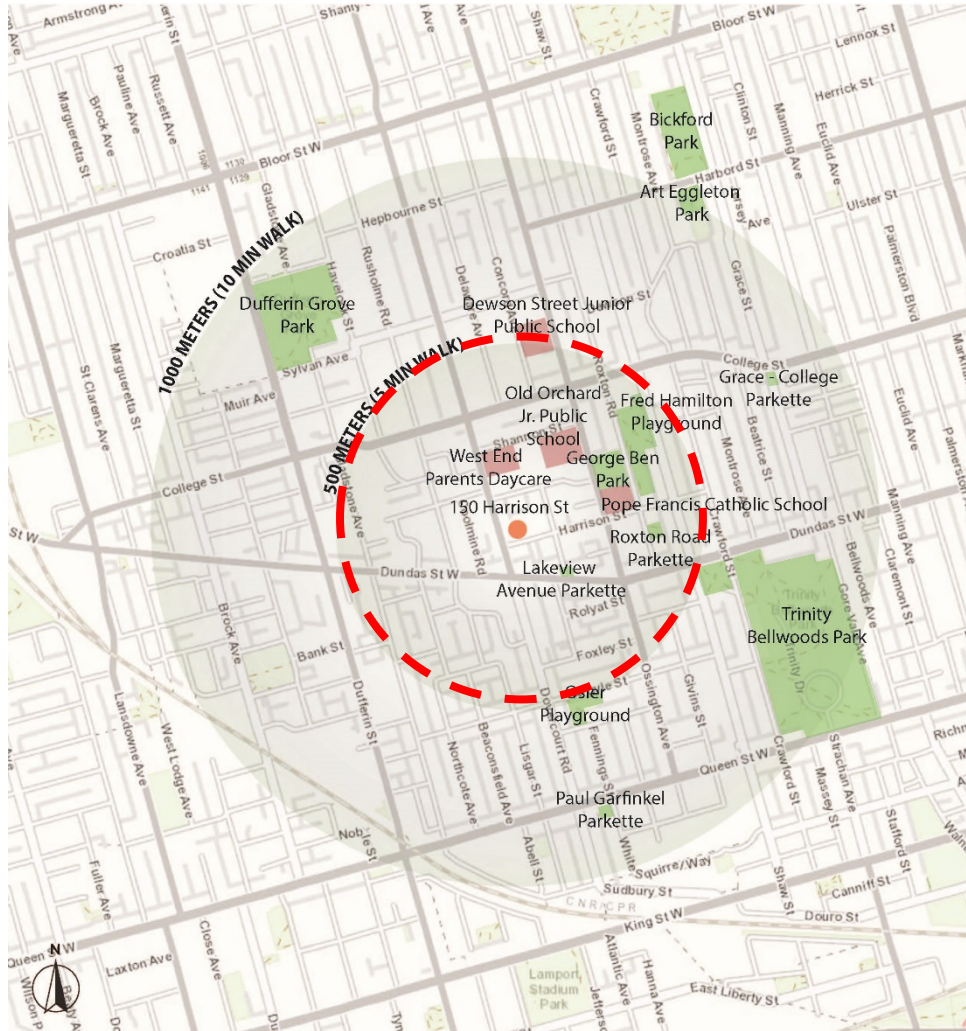
# New Park



- 725m<sup>2</sup> park
- Located at the south end of the site, along Harrison St

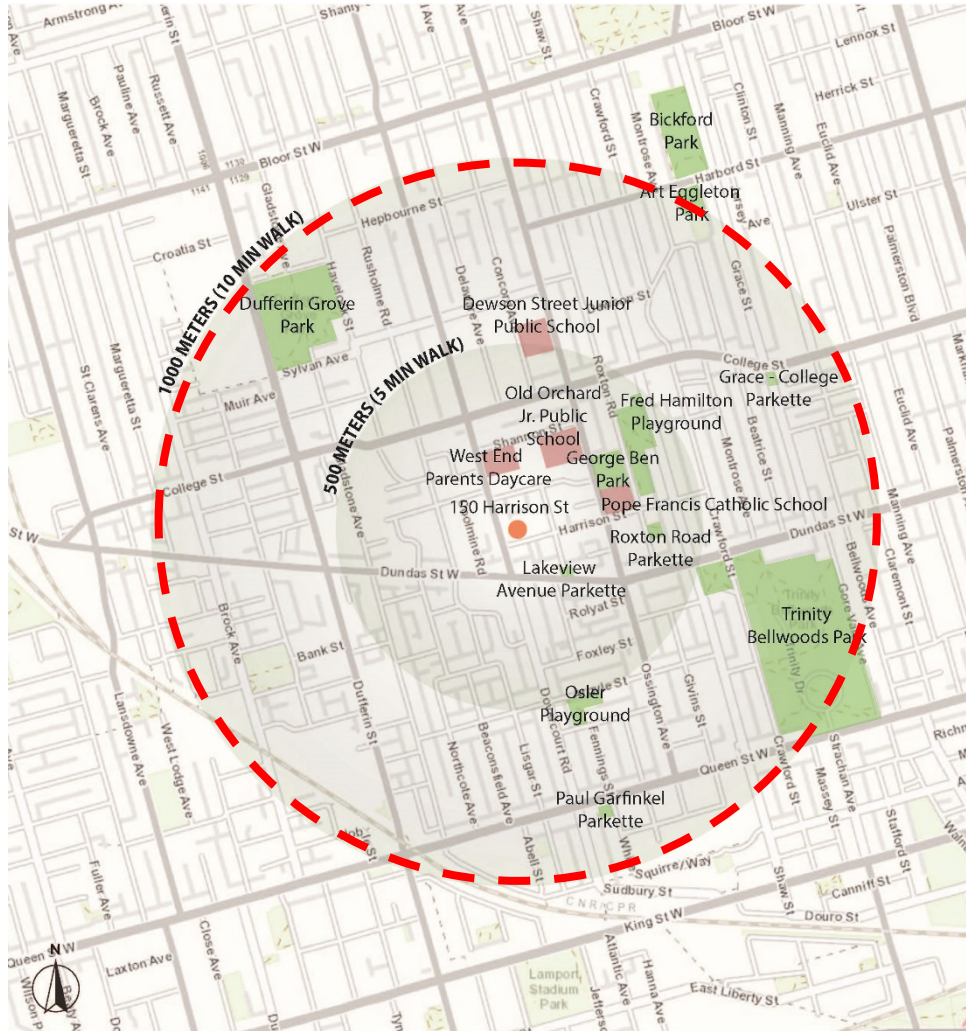
# Park Program Rationale

# Park Amenities (5-minute walk)



- **Fred Hamilton Park**
  - Fitness equipment, bocce court, tennis table, wading pool, playground, shade structure, horticulture
- **Osler Playground**
  - Playground, wading pool, horticulture
- **George Ben Park**
  - Multipurpose field, horticulture
- **Roxton Road Parkette**
  - Horticulture
- **Lakeview Avenue Parkette**
  - Horticulture

# Park Amenities (10-minute walk)



- **Trinity Bellwoods Park**

- Baseball diamond, multipurpose field, tennis courts, playground, sportspad, wading pool, toboggan hill, off-leash area, fitness equipment, community garden

- **Dufferin Grove Park**

- Community garden, basketball court, fire-pit, ornamental fountain, table tennis, playground, wading pool, soccer field, skateboard area, ice pad, rink house, washrooms, reflexology path

- **Bickford Park**

- Baseball diamond, toboggan hill, shade structure, off-leash area, horticulture

- **Art Eggleton Park**

- Playground, wading pool, tennis table, horticulture

- **Paul Garfinkel Parkette**

- Horticulture

- **Grace-College Parkette**

- Horticulture

# Non-City Amenities



- **West End Parents Daycare**
  - Junior playground
- **Old Orchard Jr. Public School**
  - Playground, soccer field, jr. baseball diamond
- **Pope Francis Catholic School**
  - Junior playground
- **Dewson Street Jr. Public School**
  - Playground, soccer field, jr baseball diamond

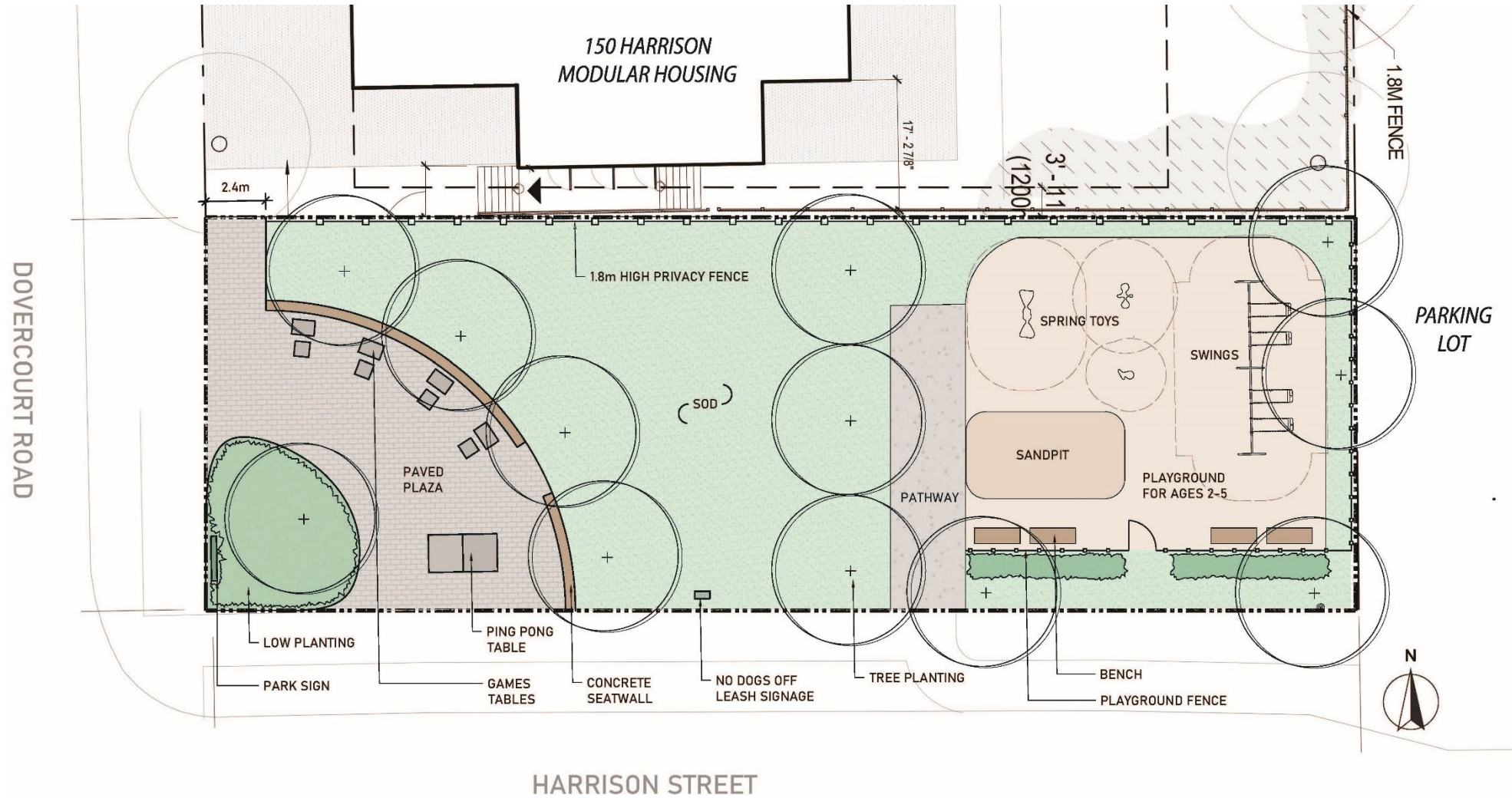
# Recommended Park Program

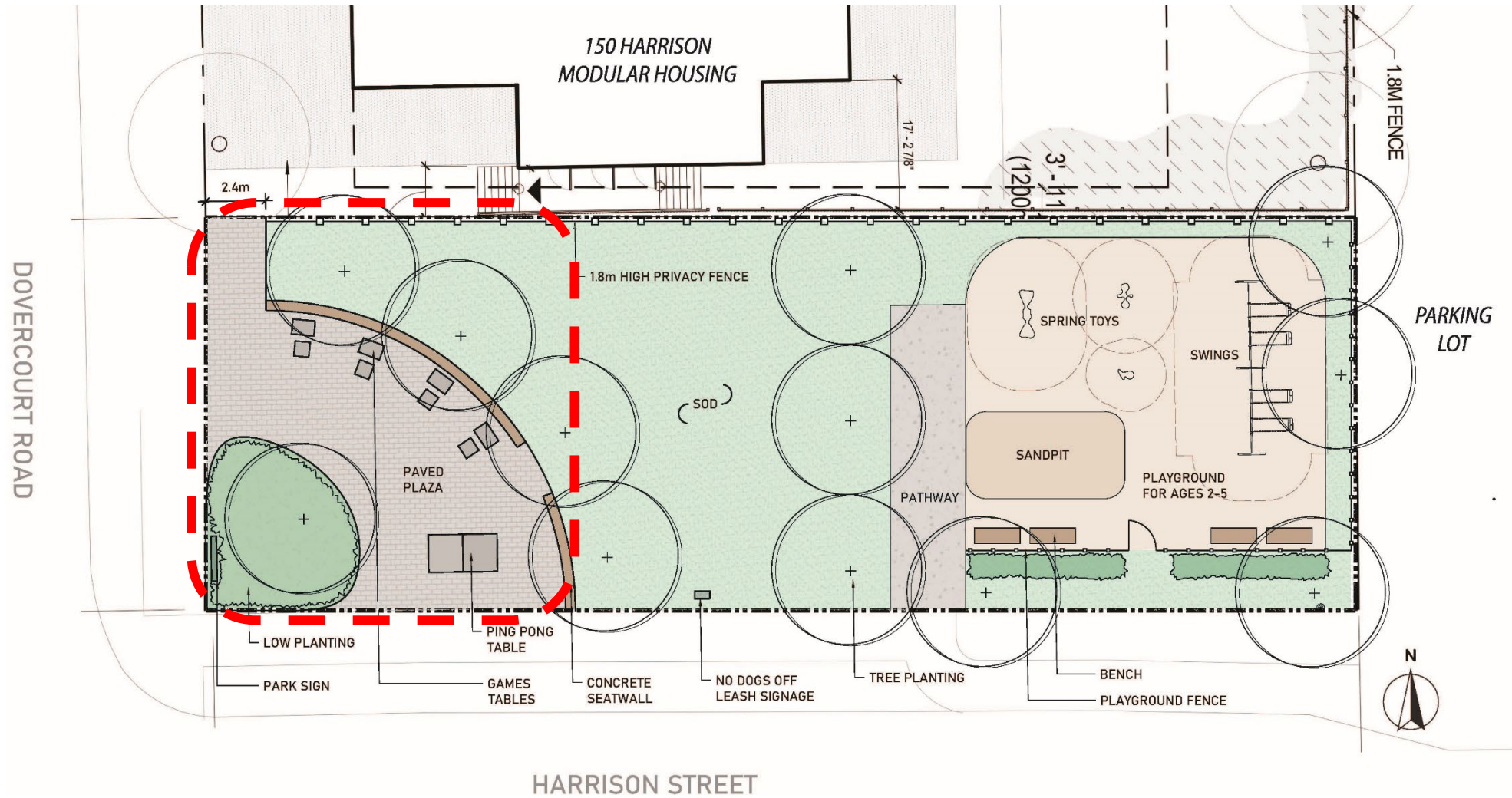


- Limitations to fit certain amenities
- 2 playgrounds within 5-minute walk, both across major streets (Dundas St W and Ossington Ave)
- Daytime site activation: playground for younger children/caregivers
- Plaza for neighbourhood gatherings
- Games tables for site activation
- Green open space for picnicking and multipurpose recreation

# Concept Design

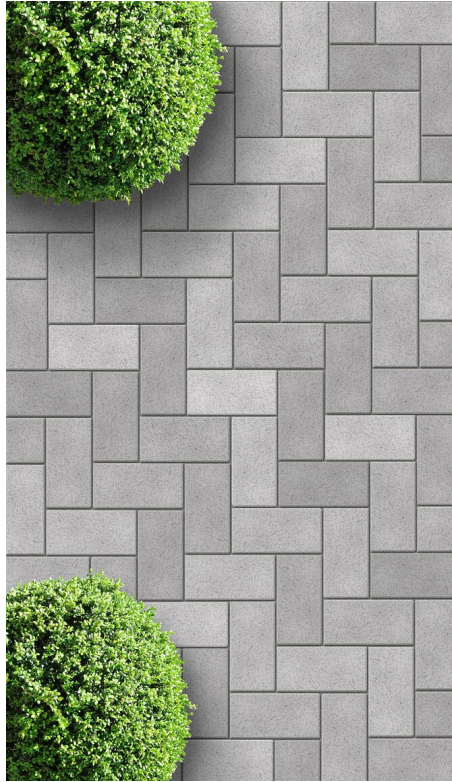
# Concept Design





- Paved plaza park entrance in south west corner, including:
- Variety of seating
- Games tables
- Ping pong table
- Low planting bed

# Plaza Materials



Unit Pavers



Seat Wall & Games Tables



Low Planting

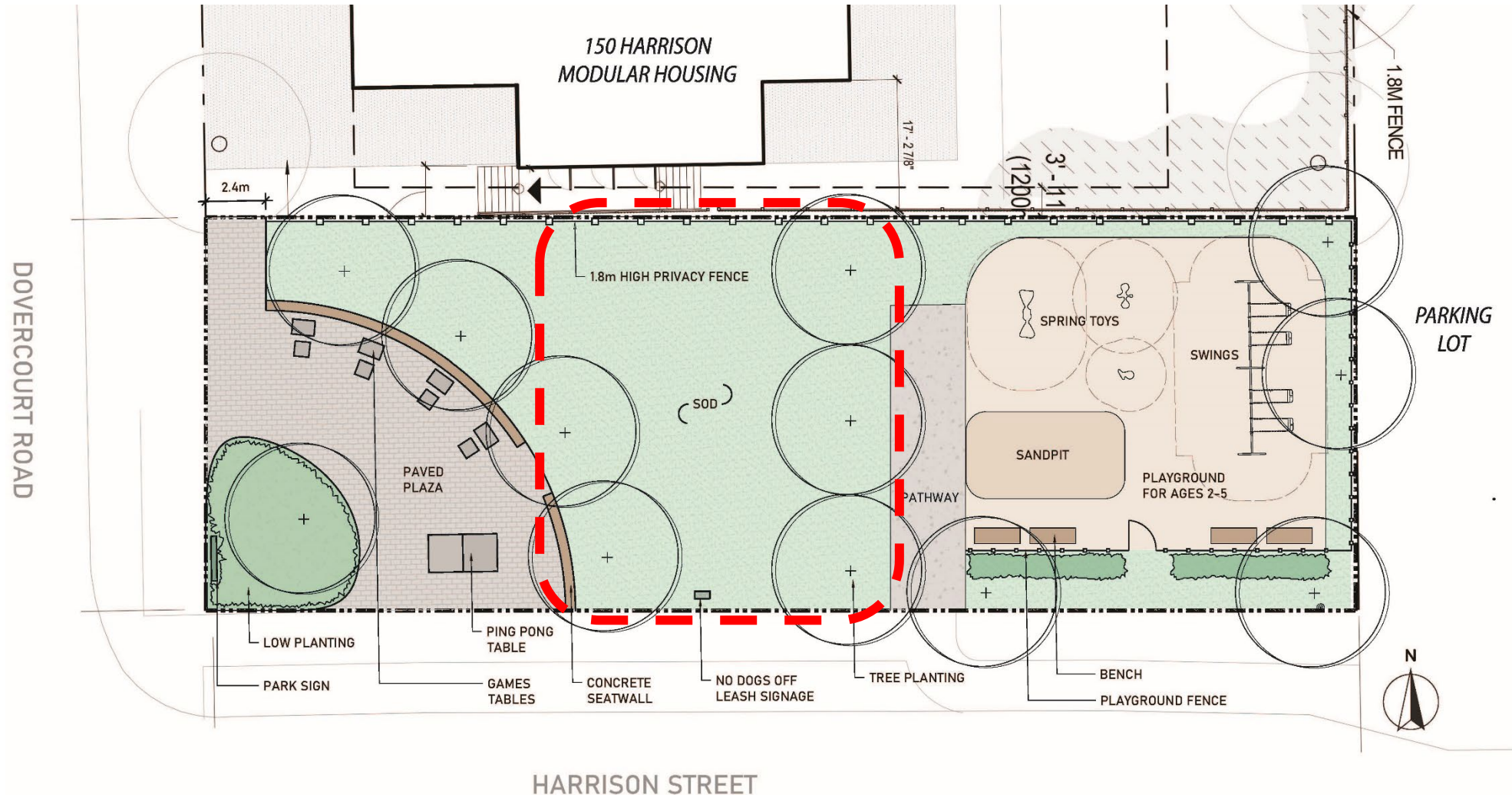


Drinking Fountain



Ping Pong Table

# Open Lawn



- Centrally located open lawn with trees planted around perimeter

# Open Lawn Materials



Open Lawn with Perimeter Trees

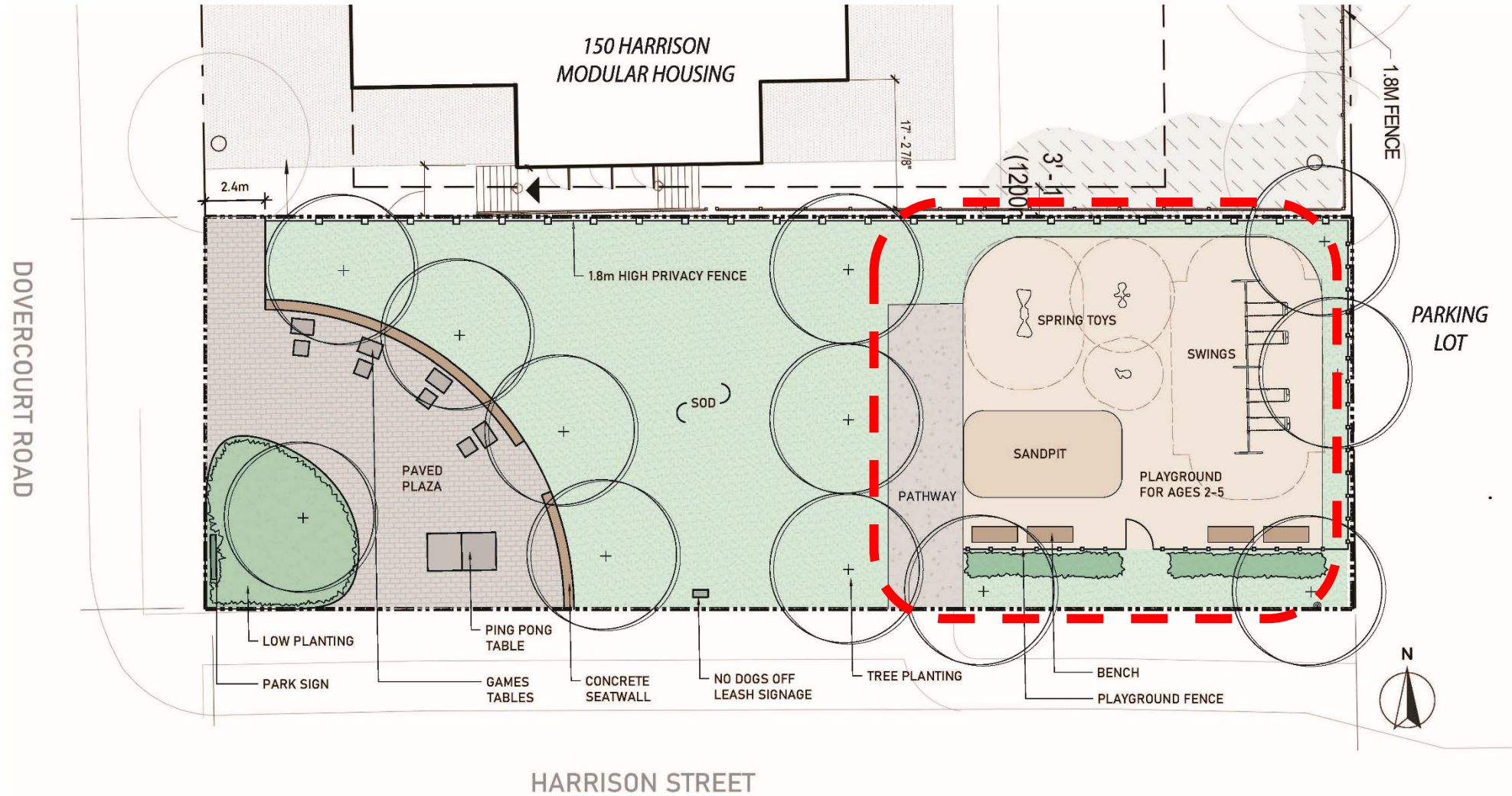


Perimeter Trees



1.8m Fence Between Park and Development

# Playground



- Junior playground, located on east side, including:
- 4 swings
- 3 spring toys
- Sandpit
- 4 benches

# Playground Materials



Sandpit



Swings



Spring Toy



Spinner



Stand Alone Toy



Benches

## Do you have any questions of clarification?

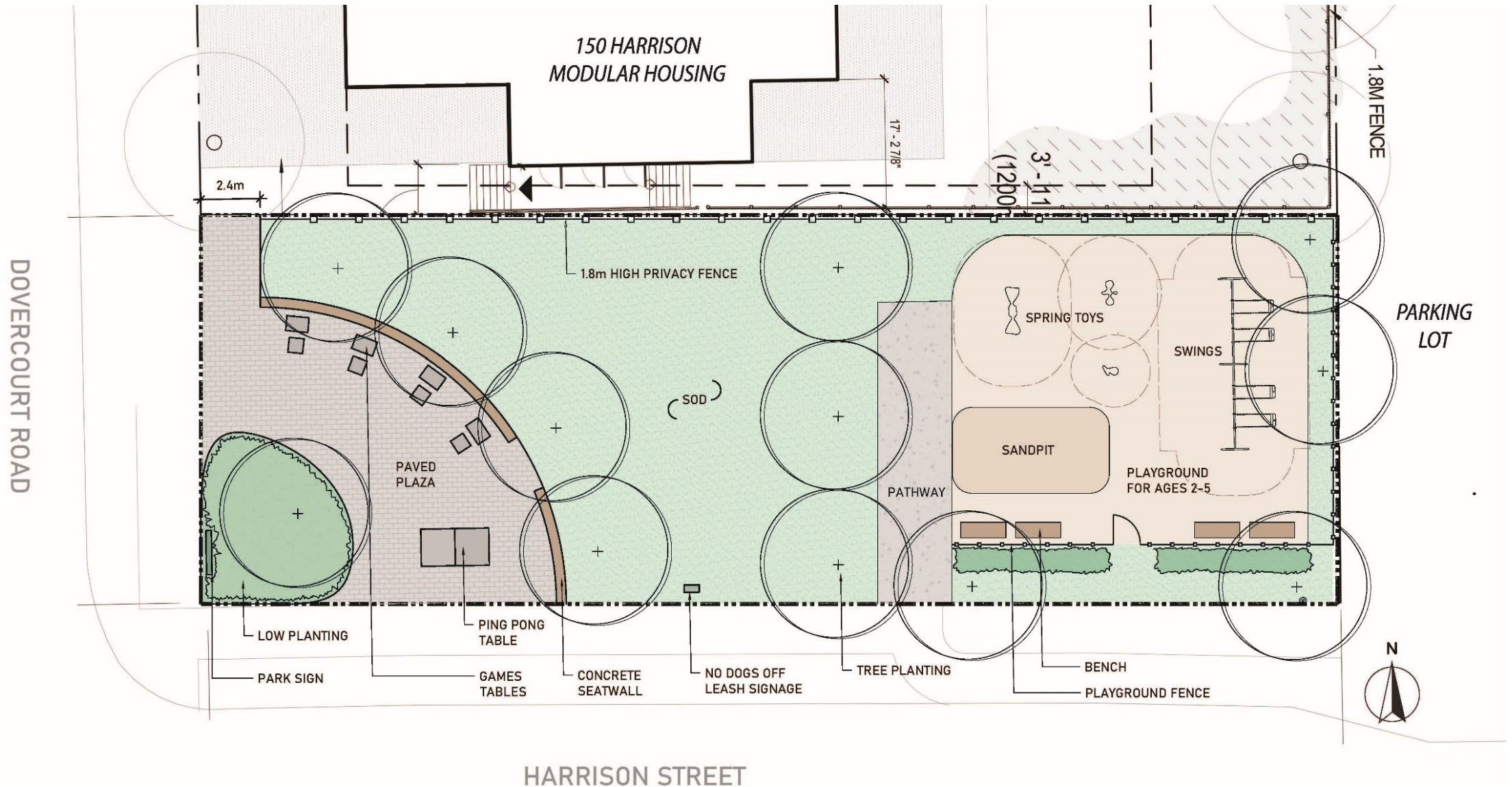
To share, please click the hand icon beside your name from the participants list on the right, or type your question into the chat.



# Discussion

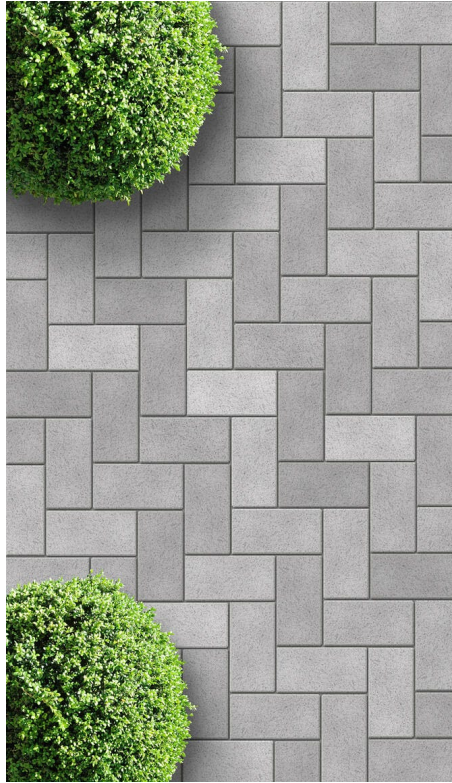
# Discussion – Concept Design

To share, please click the hand icon beside your name from the participants list on the right.



# Discussion – Plaza Materials

To share, please click the hand icon beside your name from the participants list on the right.



Unit Pavers



Seat Wall & Games Tables



Low Planting



Drinking Fountain



Ping Pong Table

# Discussion – Open Lawn Materials

To share, please click the hand icon beside your name from the participants list on the right.



Open Lawn with Perimeter Trees



Perimeter Trees



1.8m Fence Between Park and Development

# Discussion – Playground Materials

To share, please click the hand icon beside your name from the participants list on the right.



Sandpit



Swings



Spring Toy



Spinner



Stand Alone Toy

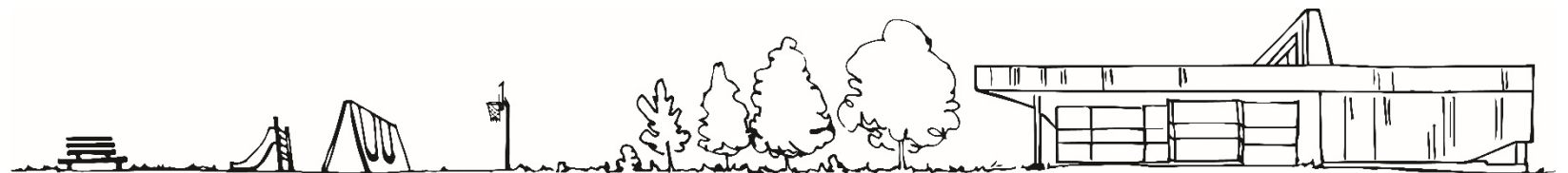


Benches

# Next Steps

# Visioning Survey

- Complete online survey to provide additional feedback
  - November 5-20, 2020, link is on the project webpage:  
[www.toronto.ca/150HarrisonPark](http://www.toronto.ca/150HarrisonPark)
- City to consolidate and analyze feedback from community
- City to develop preferred concept design that will be shared on project webpage and via Councillor Bailão communications



# THANK YOU!

[toronto.ca/150HarrisonPark](https://toronto.ca/150HarrisonPark)

