

CENTENNIAL PARK

MASTER PLAN UPDATE



Preferred Design Options Survey Summary Report

December 9, 2020

Prepared by:



Landscape
Architects



Contents

CENTENNIAL PARK	1
MASTER PLAN UPDATE	1
Preferred Design Options Survey Summary Report.....	1
Project Background.....	3
Survey Objective	3
Communication Strategy	3
SURVEY RESULTS GENERAL THEMES	4
Sports Fields: Location and Layout	4
Play.....	7
Structures.....	10
Movement.....	13
Water	15
Water Edge Types	17
Ecology.....	19
SURVEY RESULTS: SITE-SPECIFIC DESIGN IDEAS	21
The Pond	22
Option A: Low Impact	22
Option B: High Impact	22
The Hill	26
Ski-hill.....	26
The Hill	27
Option A: Fitness Hub	27
Option B: Culture Hub	27
The Heart of the Park.....	30

Project Background

Centennial Park was envisioned in 1962 and opened in 1967 during Canada's 100th birthday celebrations to meet the needs of a growing population in the Township of Etobicoke. Today, Centennial Park is Toronto's second-largest park, located in the city's west end, near the border of Mississauga. Centennial Park functions both as a local park and as a regional destination park, drawing an estimated 1.5 million people from across the City and other municipalities annually. The park contains many sports facilities, public gathering spaces and natural areas.

Survey Objective

The purpose of this report is to summarize the feedback collected through an online Preferred Option Survey for the Centennial Park Master Plan Update. The survey ran from Sept 26th to October 12th and collected feedback on proposed design options under four themes or "stories" including Water, Ecology, Movement and Culture.

Communication Strategy

The survey was promoted through signage, social media ads and a postcard mail-out campaign. The targeted the neighbourhoods surrounding Centennial park

Postcards: 8, 928

Social Media Ads Reach: 11,122

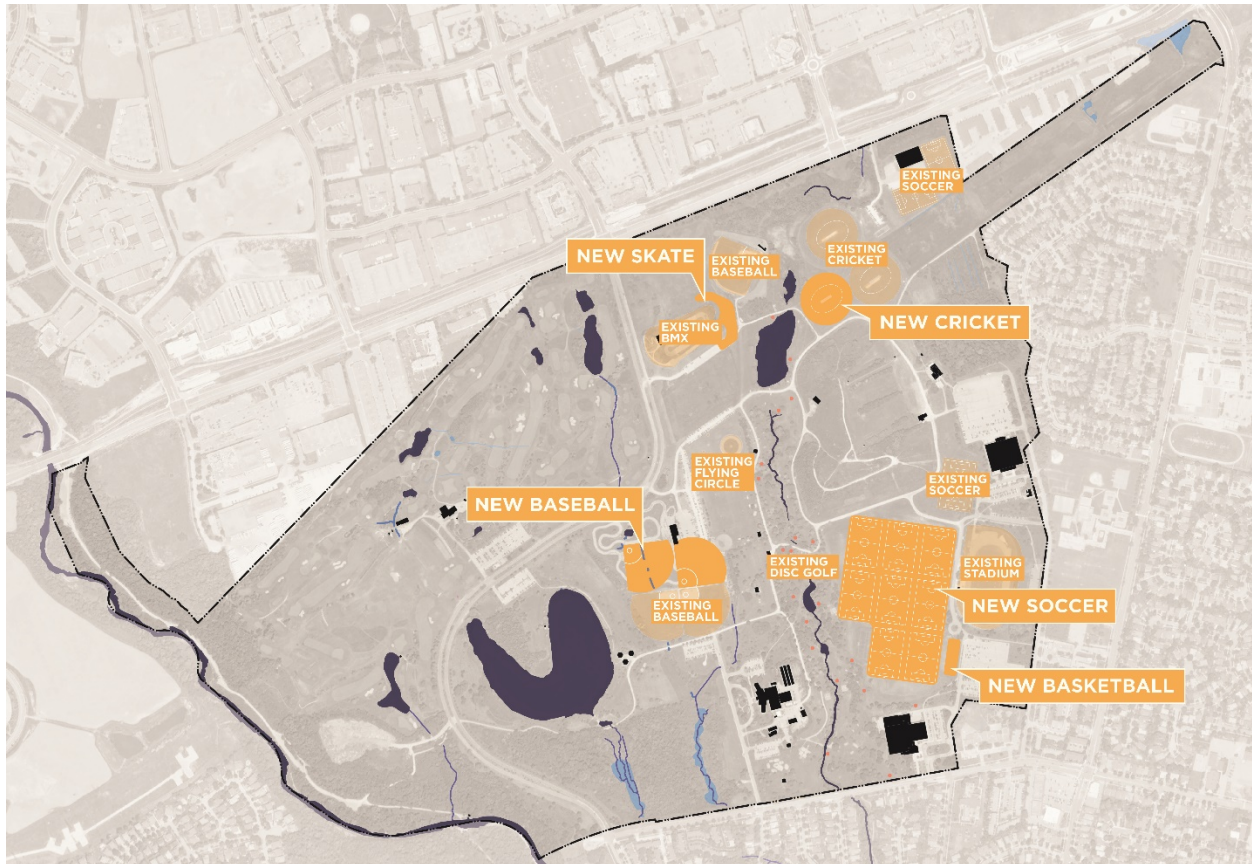
Social Media Ads Generated Clicks: 1,122

Total Survey Respondents: 1,000



SURVEY RESULTS GENERAL THEMES

Sports Fields: Location and Layout



The image above shows the possible re-organization of the sports fields, as well as some additions, as outlined in the list below. The decisions were guided by the public consultation to date as well as by the recommendations put forth by the Centennial Park Master Plan Facilities and Service Planning Assessment (2020). This assessment made recommendations for the park within the framework of the equitable service across the entire city (per recommendation from the city-wide Toronto Parks Facilities Master Plan (2019)).

78% of survey respondents agreed with the proposed layout of the **Sports Facilities**

Participants were asked if they agreed with the proposed layout of the sports facilities. Participants who indicated that they did not agree were asked to further explain their thoughts. The lists below summarize the responses gathered.

NOTE TO READER: Responses are organized from highest volume to lowest volume. When a number is in brackets, example: (4), that number represents the volume of survey responses provided for this comment. Please note that a single person could have commented on several themes.

LAYOUT OF THE SPORTS FACILITIES: Most Popular Responses

High popularity elements in the survey:

- Basketball:
 - Interested in including more basketball courts (33)
 - Disagreed with the spatial orientation of the basketball courts (safety, noise, etc.) (6)
- Go-Karts:
 - Disagreed with the elimination of the go-karts (21)
- Skating:
 - Interested in the inclusion of winter skating (17)
- Soccer:
 - Indicated there are too many soccer fields (15)
- Tennis:
 - Interested in including more tennis courts (14)
- Pre-Existing:
 - Interested in maintaining the park as is (11)
- Volleyball:
 - Interested in the addition of volleyball courts (6)
- Dog park:
 - Interested in the inclusion of a dog off-leash area (6)

LAYOUT OF THE SPORTS FACILITIES: Medium Popular Responses

Medium popularity elements in the survey:

- Skiing:
 - Interested in maintaining the current ski hill (5)
- Nature:
 - Interested in maintaining the park as natural as possible (5)
- Baseball:
 - Disagreed with the reduction of one baseball diamond (4)
 - Disagreed the position of the baseball diamonds (safety) (3)
 - Interested in removing further baseball diamonds (1)
- Softball:
 - Disagreed with the reduction of three softball diamonds (4)
- Curling:
 - Interested in including curling facilities in the park (4)
- Swimming:
 - Interested in including an outdoor swimming pool (4)
- Cost:

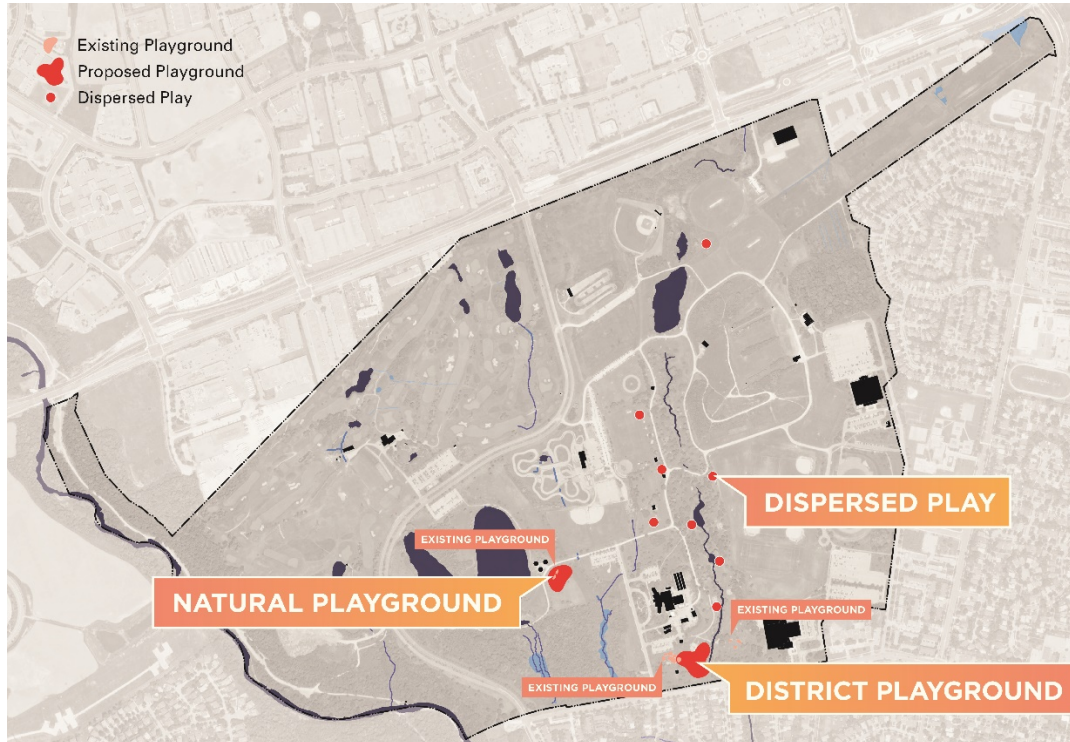
- Interested in keeping the park as low cost as possible (4)
- Trails:
 - Interested in including more trails throughout the park (4)
- Cricket:
 - Disagreed with the additional cricket pitch (3)
 - Interested in including more space for the additional cricket pitch (1)
- Seniors:
 - Interested in including considerations for senior's activities (3)
- Cycling:
 - Interested in including more designated cycling trails/lanes (3)
- BMX:
 - Interested in maintaining the BMX track in the park (3)
- Track and Field:
 - Interested in maintaining track and field facility (3)

LAYOUT OF THE SPORTS FACILITIES: Least Popular Responses

Low popularity elements in the survey:

- Fitness:
 - Interested in including a fitness area within the sports fields (2)
- Football:
 - Interested in including football and Gaelic football fields (2)
- Parking:
 - Interested in more parking (2)
 - Indicated that more parking is not needed (1)
- Disc Golf:
 - Interested in clearer location / enhanced wayfinding for disc golf (2)
 - Indicated that the location of disc golf is intrusive (1)
 - Indicated that disc golf cages are not necessary (1)
- Archery:
 - Interested in including an archery center (1)
- Fishing:
 - Interested in fishing supplies for the pond (1)
- Flying circle:
 - Indicated that the flying circle is unnecessary (1)
- Pickle Ball:
 - Interested in including pickle ball (1)
- Skate park:
 - Disagreed with the skate park (1)
- Splash Pad:
 - Interested in a splash pad for children (1)
- Accessibility:
 - Interested in seeing more accessible areas (1)

Play



The diagram above shows the possible layout for new play features. The district playground would be a large, accessible playground that would include water play features, sensory play and places for parents to sit and socialize. The natural playground would be an adventure-focused play area with more natural materials used in the structures and surfacing. The dispersed play would consist of playful moments located throughout the park using topography and natural materials that would require less maintenance (i.e., logs to walk/jump along).

91% of survey respondents agreed with the proposed sitting of the **Natural Playground**

88% of survey respondents agreed with the proposed sitting of the **District Playground**

88% of survey respondents agreed with the proposed sitting of the **Dispersed Play**

Participants were asked if they disagreed with the proposed location of any play features. Participants who indicated that they did not agree were asked to further explain their thoughts. The lists below summarize the responses gathered.

NOTE TO READER: Responses are organized from highest volume to lowest volume. When a number is in brackets, example: (4), that number represents the volume of survey responses provided for this comment. Please note that a single person could have commented on several themes.

PROPOSED LOCATION OF PLAY FEATURES: Most Popular Responses

High popularity elements in the survey:

CENTENNIAL PARK MASTER PLAN UPDATE:

Preferred Design Options Survey Summary Report

- Play Location:
 - Interested in spreading out the play areas (5)
 - Indicated that the district playground should be moved to the centre of the park (3)
 - Interested in more parking near the district playground (2)
 - Indicated that the district playground should not be by the ravine for safety (1)
 - Interested in separating play features from picnicking areas (1)
 - Indicated that there should be more play near sports fields (1)
- Splash Pad:
 - Interested in seeing more water play and splash pads for kids (5)
- Dispersed:
 - Indicated that the spatial organization of the dispersed play is a safety hazard (sports fields, disc golf, etc.) (4)
- Toboggan:
 - Interested in maintaining the toboggan hill (4)
- Playgrounds:
 - Indicated that there should be more areas for play (3)
 - Indicated that dispersed play should be the only play areas (2)
 - Indicated that the district playground should be the only playground (1)
- Natural Play:
 - Interested in increasing the amount of natural play areas (3)
 - Indicated that the spreading out of natural play is not practical for parents (1)

PROPOSED LOCATION OF PLAY FEATURES: Least Popular Responses

Low popularity elements in the survey:

- Cost: Indicated that the play areas are not worth the cost to the City (2)
- Pre-existing: Interested in maintaining the existing play features (2)
- Interference: Indicated that the play areas intersect bike paths creating safety concerns (1)
- Go-Karting: Interested in maintaining the go-karting facilities (1)
- Golf: Interested in reallocating the golf course (1)
- Accessibility: Interested in the location of play areas and accessibility challenges (1)

Participants were asked if they felt there are additional locations that should be considered for dispersed play. The lists below summarize the responses gathered.

NOTE TO READER: Responses are organized from highest volume to lowest volume. When a number is in brackets, example: (4), that number represents the volume of survey responses provided for this comment. Please note that a single person could have commented on several themes.

ADDITIONAL LOCATIONS FOR DISPERSED PLAY: Most Popular Responses

High popularity elements in the survey:

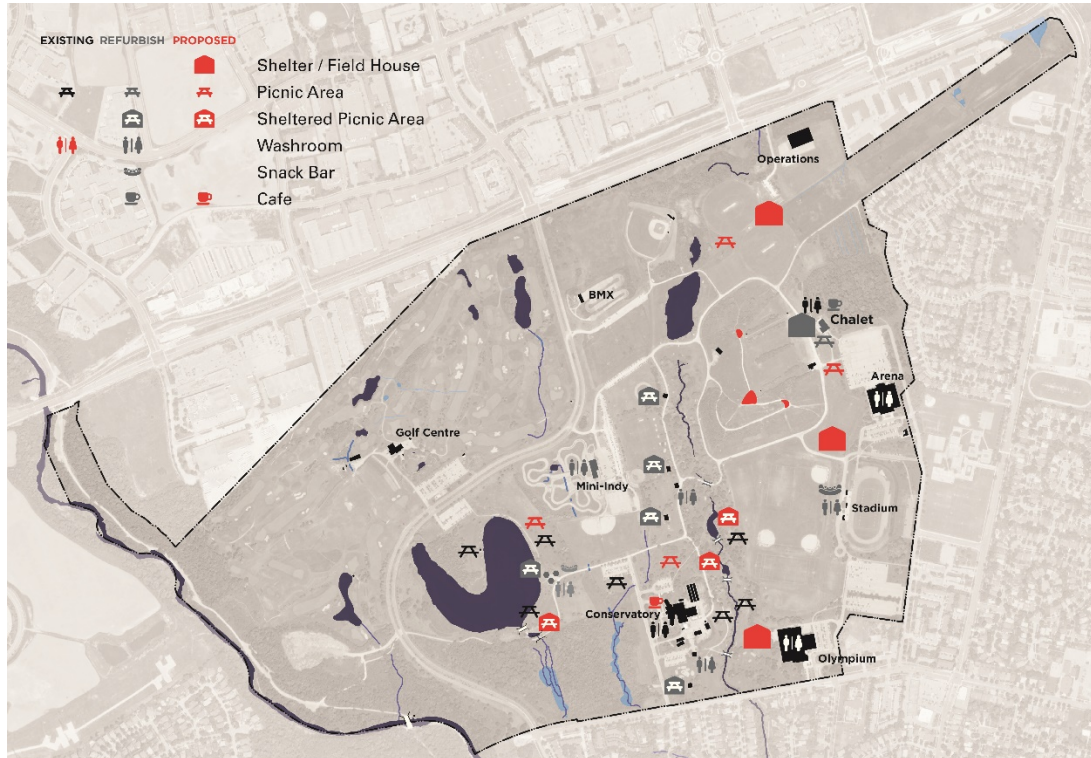
- Ski Hill:
 - Interested in more play areas near the ski hill (11)
- Directional:
 - Interested in more play areas in the North and West areas of the park (6)
 - Interested in more play areas in the South East area of the park (1)
 - Interested in a play area near Hollycrest (1)
- Sports fields:
 - Interested in more play areas by the sports fields (5)
- Pond:
 - Interested in more play areas near the pond (4)
- Dog Park:
 - Interested in a dog park for animal play (3)

ADDITIONAL LOCATIONS FOR DISPERSED PLAY: Least Popular Responses

Low popularity elements in the survey:

- Residential: Interested in more play areas near residential areas of the park (2)
- Splash pad: Interested in a better splash pad (2)
- BMX: Interested in a play area near the BMX track (1)
- Cricket: Interested in a play area near the cricket fields (1)
- Disc Golf: Indicated safety concerns for play areas near disc golf (1)
- Skatepark: Interested in the inclusion of a skatepark (1)
- Benches: Interested in more benches and shelter near the play areas (1)
- Walking path: Indicated that play areas should be separated from walking/biking paths (1)
- Accessibility: Interested in the location of play areas and accessibility challenges (1)

Structures



The diagram above shows the existing and proposed structures (e.g., shelters, picnic areas, washrooms, snack bars, cafés, and buildings). The colour of each shape denotes whether the structure is recommended to remain as-is, should be refurbished, or is proposed, per legend on the left, as per legend on the top left corner.

Note: proposed structures are under consideration for both short and long-term (10-20years) goals.

90% of survey respondents agreed with the proposed location of **Cafe**

88% of survey respondents agreed with the proposed **Picnic Sites**

87% of survey respondents agreed with the proposed **Shelters**

Participants were asked if they disagreed with the proposed location of the new shelters, picnic sites, or café. Participants who indicated that they did not agree were asked to further explain their thoughts. The lists below summarize the responses gathered.

NOTE TO READER: Responses are organized from highest volume to lowest volume. When a number is in brackets, example: (4), that number represents the volume of survey responses provided for this comment. Please note that a single person could have commented on several themes.

PROPOSED LOCATION OF NEW SHELTERS, PICNIC SITES OR CAFE:

Most Popular Responses

High popularity elements in the survey:

- Café Location:
 - Disagreed with the addition of a café to the park (10)
 - Interested in a café near the stadium (4)
 - Interested in a café near the ski hill (3)
 - Interested in a café at the conservatory (2)
- Nature:
 - Interested in least number of structures to keep the park as natural as possible (10)
- Shelter Location:
 - Interested in spreading out and increasing the number of shelters (6)
 - Disagreed with the additional shelters (5)
 - Disagreed with a shelter near the pond (4)
 - Interested in least number of shelters near the sports fields (2)
- Picnic Location:
 - Disagreed with the additional picnic areas (4)
 - Disagreed with a picnic area near the pond (4)
 - Interested in more picnic areas near the sports fields (3)
 - Interested in picnic areas near the base of the ski hill (2)
 - Interested in picnic areas near larger trees instead of creating shelters (1)
 - Disagreed with picnic areas near the chalet (1)
 - Interested in separating picnic areas and disc golf course (1)
- Restaurant:
 - Interested in the addition of a restaurant (4)

PROPOSED LOCATION OF NEW SHELTERS, PICNIC SITES OR CAFE:

Least Popular Responses

Low popularity elements in the survey:

- Noise: Interested in least number of shelters near residences to decrease noise (3)
- Seating: Interested in more areas for seating (2)
- Spacing: Interested in more structures on the West end of the park (1)

Participants were asked if there are additional locations where shelters, picnic tables or washrooms are needed. The lists below summarize the responses gathered.

NOTE TO READER: Responses are organized from highest volume to lowest volume. When a number is in brackets, example: (4), that number represents the volume of survey responses provided for this comment. Please note that a single person could have commented on several themes.

ADDITIONAL LOCATIONS OF SHELTERS, PICNIC TABLES OR WASHROOMS: Most Popular Responses

High popularity elements in the survey:

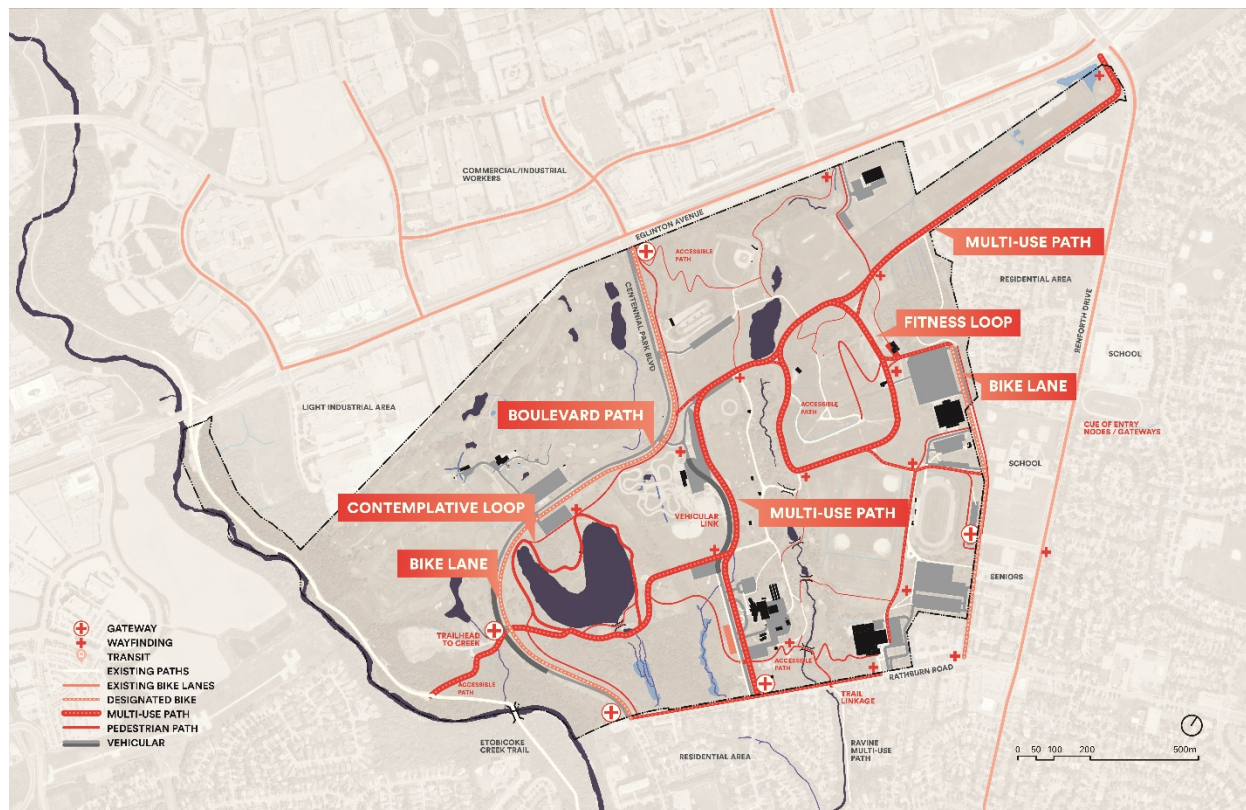
- Washrooms:
 - Interested in increasing the general number of washrooms (15)
 - Interested in increasing the number of washrooms:
 - Near the BMX facility (10)
 - Near the pond (3)
 - Near picnic areas (2)
 - Near the sports fields (2)
 - Near the golf course (1)
- Picnic Location:
 - Interested in increasing picnic areas by the golf course/pond (5)
 - Interested in increasing the number of picnic tables (4)
- Shelters:
 - Interested in increasing the general number of shelters (5)
 - Interested in increasing the number of shelters:
 - Near the sports fields (2)
 - On the south side (1)
 - Near the playground (1)
 - By the pond (1)
- Café Location:
 - Interested in a café near the ski chalet (4)
 - Interested in an additional café (4)

ADDITIONAL LOCATIONS OF SHELTERS, PICNIC TABLES OR WASHROOMS: Least Popular Responses

Low popularity elements in the survey:

- Drinking Fountains: Interested in increasing number of drinking fountains (2)
- Nature: Interested in decreasing number of structures to keep the park as natural as possible (2)
- Garbage: Interested in increasing number waste disposal options (1)

Movement



The diagram above shows the proposed circulation network for the park. The use (multi-use, pedestrian, designated bike) is shown in the legend to the bottom left.

93% of survey respondents agreed with the layout of the proposed **circulation features**

Participants were asked if they disagreed with the proposed circulation network for the park. Participants who indicated that they did not agree were asked to further explain their thoughts. The lists below summarize the responses gathered.

NOTE TO READER: Responses are organized from highest volume to lowest volume. When a number is in brackets, example: (4), that number represents the volume of survey responses provided for this comment. Please note that a single person could have commented on several themes.

PROPOSED CIRCULATION NETWORK: Most Popular Responses

High popularity elements in the survey:

- Bike Paths:
 - Interested in separating bike lanes and pedestrian paths (8)
 - Interested in increasing the number of bike lanes (1)
- Nature:
 - Interested in increasing maintaining the park as natural as possible (5)
- Pedestrian Paths:
 - Interested in paved pathways for walkers (3)
 - Interested in lengthening/increasing pedestrian pathways (2)

- Interested in removing the pathway on the ski hill (2)

PROPOSED CIRCULATION NETWORK: Least Popular Responses

Low popularity elements in the survey:

- Map: Interested in including wayfinding and maps along trails (2)
- Car Traffic: Interested in decreasing the volume of car traffic through the park (2)
- Activity: Interested in decreasing the amount of activity in the park (1)
- Accessibility: Interested in mapping /visualizing the accessible paths (1)

Participants were asked if there are additional locations that should be considered for pathways. The lists below summarize the responses gathered.

NOTE TO READER: Responses are organized from highest volume to lowest volume. When a number is in brackets, example: (4), that number represents the volume of survey responses provided for this comment. Please note that a single person could have commented on several themes.

ADDITIONAL PATHWAY LOCATIONS: Most Popular Responses

High popularity elements in the survey:

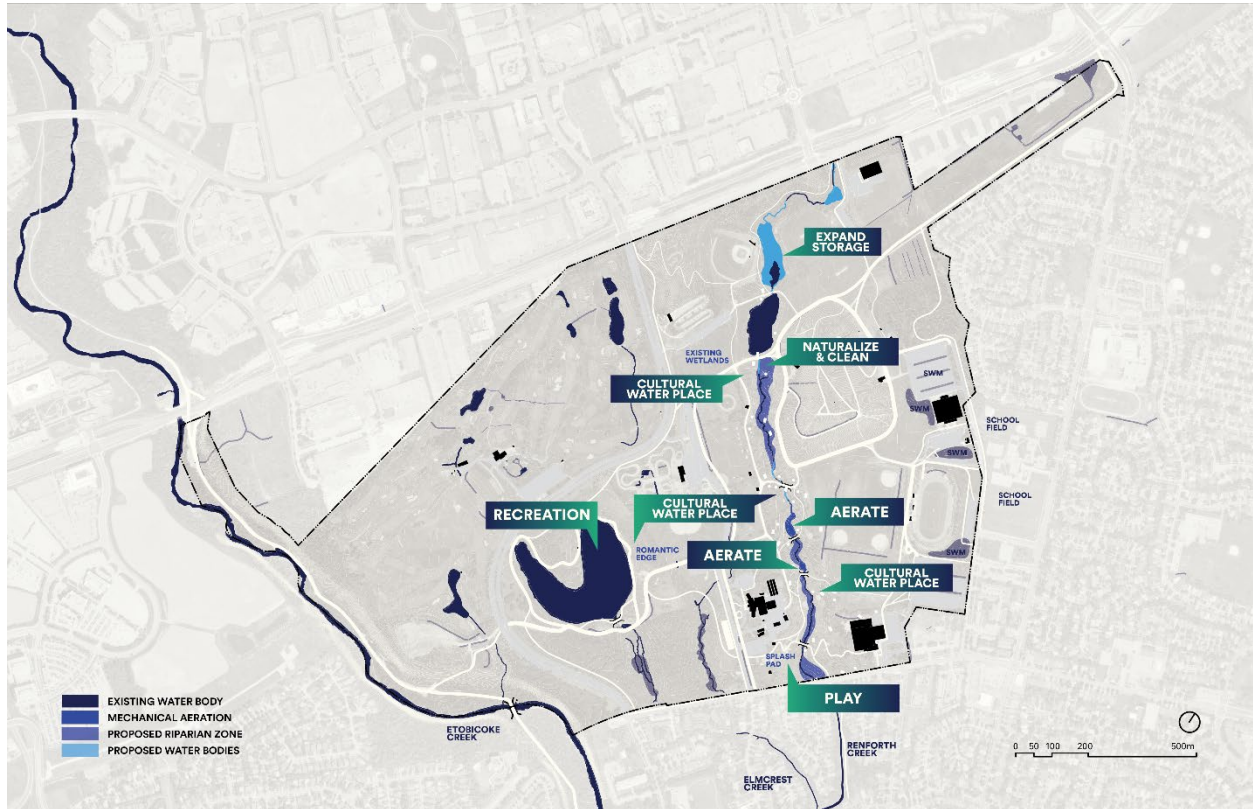
- Pedestrian Paths:
 - Interested in increasing the number of pathways (6)
 - Interested in a trail loop around the entire park (4)
 - Interested in a more direct paths to sport facilities (3)
 - Interested in varying the trail difficulty for different uses (1)
- Accessible:
 - Interested in paving pathways for better accessibility (6)
 - Interested in ensuring the pathways are accessible from all entrances and roadways (3)
 - Interested in ramps on high curbs to support wheel mobility (1)
- Map:
 - Interested in wayfinding, signage and maps throughout the trails (6)
- Bike Paths:
 - Interested in separating bike lanes and pedestrian paths (5)
 - Interested in a separated bike path on Centennial Park Blvd. (2)
 - Interested in transforming paths into cross-country skiing trails during the winter (1)
- Safety:
 - Interested in sidewalks and crosswalks along the main roads (5)

ADDITIONAL PATHWAY LOCATIONS: Least Popular Responses

Low popularity elements in the survey:

- Disc Golf: Indicated that circulation network should avoid crossing the disc golf course (1)
- Car Traffic: Interested in preventing traffic flow to Eglinton Ave. (1)
- Fitness: Interested in fitness stations along trails (1)
- Indoor trails: Interested in an indoor walking track for winter use (1)
- Mountain Biking: Interested in additional mountain bike trails (1)

Water



The diagram above proposes possible relationships to the water edges. It also proposes locations for new storage for stormwater management, and areas where waterways could be naturalized in order to clean the water and provide better habitat. We have also proposed two ponds for aeration to aid with water flow. Locations marked as “cultural water place” are proposed for improved access and views to the water.

95% of survey respondents agreed with the proposed location of **water uses**.

Participants were asked if they disagreed with the proposed location of water uses. Participants who indicated that they did not agree were asked to further explain their thoughts. The lists below summarize the responses gathered.

NOTE TO READER: Responses are organized from highest volume to lowest volume. When a number is in brackets, example: (4), that number represents the volume of survey responses provided for this comment. Please note that a single person could have commented on several themes.

PROPOSED LOCATIONS OF WATER USES: Most Popular Responses

High popularity elements in the survey:

- Pond:
 - Indicated that the pond needs to have better cleaning systems (5)
 - Disagreed with the pond used for recreation (3)
 - Interested in seeing a dock for non-motorized boats (1)
 - Interested in ice skating on the pond (1)
- Cultural
 - Indicated that they do not understand the concept of “cultural water place” (4)
- Water Play
 - Interested in seeing a new splash pad (3)
 - Interested in adding an additional splash pad (3)
 - Interested in introducing more natural water areas for play (1)

PROPOSED LOCATIONS OF WATER USES: Least Popular Responses

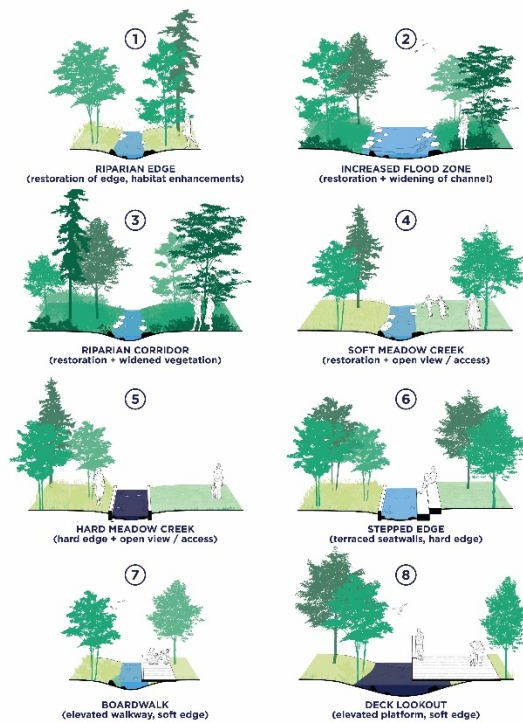
Low popularity elements in the survey:

- General: Interested in increasing the amount of water features (2)
- Drinking Fountain: Interested in including more drinking fountains around the park (1)

Water Edge Types



12



13

The diagram above shows the possible types of edges along Renforth Creek and the pond. The edge types are illustrated on the right and are coded on a close up map on the left.

95% of survey respondents agreed with the proposed locations of **water edge types**.

Participants were asked if they disagreed with the proposed types of water edges. Participants who indicated that they did not agree were asked to further explain their thoughts. The lists below summarize the responses gathered.

NOTE TO READER: Responses are organized from highest volume to lowest volume. When a number is in brackets, example: (4), that number represents the volume of survey responses provided for this comment. Please note that a single person could have commented on several themes.

PROPOSED TYPES OF WATER EDGES: Most Popular Responses

High popularity elements in the survey:

- Hard Edges: Interested in no hard edges along the water (9)
- Natural: Interested in the water edge being as natural as possible (5)
- Safety: Indicated that water edge types that are too close water are safety hazards for children (4)

PROPOSED TYPES OF WATER EDGES: Least Popular Responses

Low popularity elements in the survey:

- Lookouts:
 - Interested in more lookouts (2)
- Numbers:
 - Not interested in feature #6 or #7 (2)
 - Interested in feature #6 and #7 (2)
 - Interested in feature #3 (1)
- Boardwalk:
 - Interested in increasing the number of boardwalks (2)
 - Not interested in boardwalks (1)
- Location:
 - Interested in increasing water features to the North (1)
- Creek
 - Interested in restoring the creek to increase natural flow (1)
- Cleaning
 - Interested in increasing pond cleaning (1)

Participants were asked if there are there locations where different types of water edges should be considered. The lists below summarize the responses gathered.

NOTE TO READER: Responses are organized from highest volume to lowest volume. When a number is in brackets, example: (4), that number represents the volume of survey responses provided for this comment. Please note that a single person could have commented on several themes.

ADDITIONAL LOCATIONS FOR DIFFERENT WATER EDGES: Most Popular Responses

High popularity elements in the survey:

- Stepped Edge:
 - Interested in further additions of the stepped edge - #6 (5)
- Natural:
 - Interested in revitalizing the creek to improve ecological preservation (4)
 - Interested in restoring natural processes (4)
- Lookouts:
 - Interested in increasing the number of lookouts from different viewpoints (3)
- Boardwalk:
 - Interested in increasing the number of boardwalks (3)

ADDITIONAL LOCATIONS FOR DIFFERENT WATER EDGES: Least Popular Responses

Low popularity elements in the survey:

- Bridge: Interested in the addition of a bridge (2)
- Dog Beach: Interested in seeing a dog beach (1)
- Hard Edges: Interested in eliminating all hard edges (1)
- Location: Interested in quieter/more private seating away from activity (1)

Ecology



The diagram above shows proposed environments for the park that are intended to consolidate, link and enhance site and local ecologies. In order to accomplish this, the plan proposes three strategies:

1. Mowing regime: some locations to be converted to meadow (seeded or planted), some areas to be seasonally (or for special events) mowed, and some areas to be regularly and consistently mown (similar to current regime).
2. Enhanced tree planting across the site to be implemented in phases, creating an important east-west linkage.
3. Understory planting where feasible to provide varied experiences, increase diversity and create a wildlife corridor across the site.

96% of survey respondents agreed with the overall layout of the ecological site areas

Participants were asked if they disagreed with the overall layout of the ecological areas. Participants who indicated that they did not agree were asked to further explain their thoughts. The lists below summarize the responses gathered.

NOTE TO READER: Responses are organized from highest volume to lowest volume. When a number is in brackets, example: (4), that number represents the volume of survey responses provided for this comment. Please note that a single person could have commented on several themes.

PROPOSED LAYOUT OF PARK ECOLOGY: Most Popular Responses

High popularity elements in the survey:

- Trees:
 - Interested in adding more trees to the park (6)
 - Interested in open space around Sakura trees (1)
 - Interested in balancing new tree growth with adequate lighting for safety (1)
- Meadows:
 - Interested in increasing natural meadow land, i.e., no mowing (6)
 - Interested in less meadow land to prevent coyotes (1)

PROPOSED LAYOUT OF PARK ECOLOGY: Least Popular Responses

Low popularity elements in the survey:

- Go Karts: Indicated preference for the plan that maintains go karting (2)
- Garden: Interested in adding gardens (1)
- Natural: Interested in keeping the park as natural as possible (1)
- Water: Interested in increasing the amount of water features in the park (1)

Participants were asked if there are other areas that should always be mown or seasonally mown. The lists below summarize the responses gathered.

NOTE TO READER: Responses are organized from highest volume to lowest volume. When a number is in brackets, example: (4), that number represents the volume of survey responses provided for this comment. Please note that a single person could have commented on several themes.

AREAS THAT SHOULD ALWAYS BE MOWN OR SEASONALLY MOWN: Most Popular Responses

High popularity elements in the survey:

- Trees:
 - Interested in increasing the number of trees in the park (9)
 - Interested in increasing the number of trees near the entrance (2)
- Mowing Locations:
 - Interested in mowing near the park's main/common spaces (4)
 - Interested in reducing the amount of mowing needed in the park (2)
 - Interested in leaving lots of meadow space untouched (1)
- Safety:
 - Interested in mowing near locations that are prone to coyote dens (4)
- Education:

- Interested in signage to provide information on the ecology (3)
- Interested in a Food Forest for education (1)
- Natural:
 - Interested naturalizing park as much as possible (not mowed) (2)

AREAS THAT SHOULD ALWAYS BE MOWN OR SEASONALLY MOWN: Least Popular Responses

Low popularity elements in the survey:

- Community Garden:
 - Interested in adding a community garden (1)
 - Interested in adding a pollinator garden (1)
- Pathways:
 - Indicated concern for location of cross-country meets (1)
- Natural:
 - Interested naturalizing park as much as possible (1)

SURVEY RESULTS: SITE-SPECIFIC DESIGN IDEAS



The Pond



Option B: High Impact

Survey Respondents were equally split.

50% of survey respondents preferred option **A**

50% of survey respondents preferred option **B**

Participants were asked if there are elements from the Pond option, that they did not choose, that they like (e.g., viewing deck, lookouts, shelter, boat launch, etc.). The lists below summarize the responses gathered.

NOTE TO READER: Responses are organized from highest volume to lowest volume. When a number is in brackets, example: (4), that number represents the volume of survey responses provided for this comment. Please note that a single person could have commented on several themes.

POND OPTION ELEMENTS THAT RESONATE: Most Popular Responses

High popularity elements in the survey:

- Boating:
 - Disagreed with the inclusion of a boat launch (23)
 - Interested in a boat launch (2)
 - Interested in non-motorized boating (2)
- Lookouts:
 - Interested in increasing lookout locations (22)
 - Interested in limited lookout locations to 3 locations (1)
 - Disagreed with the inclusion of any lookouts (1)
- Viewing deck:
 - Interested in the viewing decks (20)
- Nature:
 - Interested in keeping the park as natural as possible (10)

POND OPTION ELEMENTS THAT RESONATE: Medium Popular Responses

Medium popularity elements in the survey:

- Shelter: Interested in providing shelters around the pond (5)
- Boardwalk: Interested in a boardwalk (4)
- Seating: Interested in increasing seating options (4)

POND OPTION ELEMENTS THAT RESONATE: Least Popular Responses

Low popularity elements in the survey:

- Fishing: Interested in areas for fishing (2)
- Natural play area: Interested in a natural play area (2)
- Adventure course: Interested in a zip line (1)
- Picnic area: Interested in more picnic areas (1)
- Safety: Indicated water safety concern for young children (1)

Participants were asked if there is programming or structures not included in either Pond option that they would like to see. The lists below summarize the responses gathered.

NOTE TO READER: Responses are organized from highest volume to lowest volume. When a number is in brackets, example: (4), that number represents the volume of survey responses provided for this comment. Please note that a single person could have commented on several themes.

ADDITIONAL PROGRAMMING OR STRUCTURES FOR POND OPTION: Most Popular Responses

High popularity elements in the survey:

- Education:
 - Interested in signage for nature education (7)
- Seating:
 - Interested in increasing seating around the park (6)
- Nature:
 - Interested in keeping the park as natural as possible (5)
 - Interested in limiting the number of Canadian Geese in the park (1)

ADDITIONAL PROGRAMMING OR STRUCTURES FOR POND OPTION: Medium Popular Responses

Medium popularity elements in the survey:

- Beach:
 - Interested in a dog off-leash dog area / beach (4)
 - Interested in a human-made beach (2)
- Boating:
 - Interested in non-motorized boating (kayaking, canoeing, etc.) (4)
 - Interested in a facility for boat rental and lessons (2)
 - Disagreed with boating (1)
- Fishing:
 - Interested in locations for fishing (3)
- Café:
 - Interested in a café near the pond (2)
- Curling:
 - Interested in a curling facility (2)
- Skating:
 - Interested in a winter ice rink for skating (3)
- Picnic area:
 - Interested in a picnic area nearby (2)
 - Disagreed with picnic areas near pond (1)
- Shelter:
 - Interested in more sheltered space around the pond (2)

ADDITIONAL PROGRAMMING OR STRUCTURES FOR POND OPTION: Least Popular Responses

Low popularity elements in the survey:

- Boardwalk:
 - Interested in a boardwalk along the water (1)
- Sculpture:
 - Interested in an edifice or stone wall (1)
 - Interested in statues of wildlife around the viewing decks (1)
- Fitness:

- Interested in locations nearby for fitness (1)
- Garden:
 - Interested in gardens around the pond (1)
- Lighting:
 - Interested in increasing lighting in the park for night safety (1)
- Lookouts:
 - Interested in more lookouts (1)
- Petting Zoo:
 - Interested in a petting zoo (1)
- Play area:
 - Interested in a playground nearby (1)
 - Interested in interactive structures for child play (1)

The Hill

Ski-hill

The survey also asked respondents **whether or not the ski-hill should be repurposed for all season use.**

When asked:

In order to continue operations at the Centennial Park Ski and Snowboard Centre (Ski Centre) , major investment is required, including infrastructure upgrades and replacement of lifts and snow-making equipment. Snow making for the Ski Centre is weather-dependent, and in the 2019-2020 season, weather restricted the season to only 40 days after a late opening on January 24. The season attracted an average of 28 visitors per day.

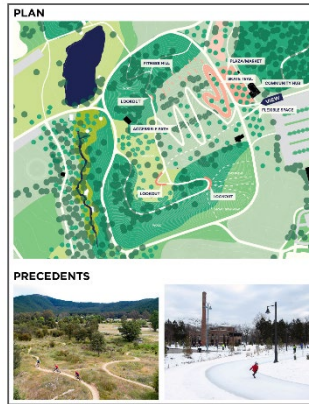
The City has to make a difficult decision to either invest in the Centennial Park Ski Centre or repurpose it for another use. What do you think of the idea of enhancing the Earl Bales Ski and Snowboard Centre and repurposing the Centennial Park Ski Centre (hill and chalet) for other year-round and seasonal activities?

73% of survey respondents supported repurposing the hill to all season use.

29% of survey respondents do not support the relocating of the Ski-Centre/Repurposing of the hill.

The Hill

Should the Ski Hill be repurposed to all season use, survey respondents were presented with two different options:



Option A: Fitness Hub

Building on its legacy as a sporting destination within the park, the Hill is re-envisioned as a multifeature fitness hub. A skating trail at its base serves as a major winter destination, supported by a sociable market plaza adjacent the existing Chalet. Outfitted fitness and senior areas, and new paths and lookouts up the hill support active lifestyles and four season use in the park.



Option B: Culture Hub

Imageable and accessible, the Hill holds great potential to be a cultural hub. This vision includes the chalet re-purposed as a cultural centre, with an activated outdoor market plaza and nearby stage and amphitheatre for theatre and music events. The hillside is re-imagined as an open meadow, with a broad snaking path punctuated by notable art lookouts that invite and inspire.

When asked **which option do you prefer?**

66% of survey respondents preferred option **A**

38% of survey respondents preferred option **B**

Participants were asked if there are elements from the Hill option, that they did not choose, that they like (e.g., skate trail, amphitheatre, fitness hill, etc). The lists below summarize the responses gathered.

NOTE TO READER: Responses are organized from highest volume to lowest volume. When a number is in brackets, example: (4), that number represents the volume of survey responses provided for this comment. Please note that a single person could have commented on several themes.

THE HILL OPTION ELEMENTS THAT RESONATE: Most Popular Responses

High popularity elements in the survey:

- Amphitheatre:
 - Interested in an Amphitheatre (52)
 - Disagreed with an Amphitheatre (11)
 - Interested in an Amphitheatre but not at the expense of the Ski Hill (5)
- Skate trail:
 - Interested in a skate trail (50)
- Fitness Hill
 - Interested in the fitness hill (14)
- Nature:
 - Interested in keeping the park as natural as possible (6)
- Ski hill:
 - Interested in maintaining the ski hill (8)
 - Disagreed with maintaining the ski hill (1)
- Art:
 - Interested in the art lookouts and temporal installations (16)

THE HILL OPTION ELEMENTS THAT RESONATE: Medium Popular Responses

Medium popularity elements in the survey:

- Plaza:
 - Interested in the plaza (2)
 - Disagreed with the plaza (5)
- Both options:
 - Interested in both options (5)
 - Preferred option A (1)
- Cultural Hub
 - Interested in the cultural hub (4)
- Natural:
 - Interested in keeping the park as natural as possible (3)

THE HILL OPTION ELEMENTS THAT RESONATE: Least Popular Responses

Low popularity elements in the survey:

- Bike trail: Interested in maintaining bike trails (1)
- Dog Park: Interested in a dog off-leash dog area (1)
- Curling: Interested in a curling rink (1)
- Skatepark: Interested in a skatepark (1)
- Seniors Area: Interested in a senior's area (1)

Participants were asked if there is programming or structures not included in either Hill option that they would like to see. The lists below summarize the responses gathered.

NOTE TO READER: Responses are organized from highest volume to lowest volume. When a number is in brackets, example: (4), that number represents the volume of survey responses provided for this comment. Please note that a single person could have commented on several themes.

ADDITIONAL PROGRAMMING OR STRUCTURES FOR THE HILL OPTION:

Most Popular Responses

High popularity elements in the survey:

- Ski Hill: Interested in maintaining / reinvesting in the ski hill (12)
- Dog Park: Interested in a dog off-leash area (7)
- Toboggan Hill: Interested in a tobogganing hill (5)
- Trails: Interested in more bike trails (5)

ADDITIONAL PROGRAMMING OR STRUCTURES FOR THE HILL OPTION:

Medium Popular Responses

Medium popularity elements in the survey:

- Adventure Course:
 - Interested in an adventure course featuring high ropes and zip lining (3)
- Amphitheatre:
 - Interested in an Amphitheatre (4)
- Farmer's market:
 - Interested in a facility for weekly farmer's markets (3)
- Cross-country skiing:
 - Interested in cross-country skiing trails (2)
- Fitness area:
 - Interested in additional fitness amenities (3)
- Plaza:
 - Interested in more food options such as a café (4)
 - Interested in a beer garden (1)
- Skate trail:
 - Interested in increasing the length of the proposed the skate trail (3)

ADDITIONAL PROGRAMMING OR STRUCTURES FOR THE HILL OPTION:

Least Popular Responses

Low popularity elements in the survey:

- Accessibility:
 - Interested in ensuring the park more wheelchair/walker accessible (1)
- Archery center:
 - Interested in an archery centre (1)
- Art:
 - Interested in public art (1)
 - Interested in interactive public art (1)
 - Interested in an art market for the purpose of sales (1)

- Disagreed with art installation (1)
 - Interested in Indigenizing the park (1)
- Beach Volleyball:
 - Interested in beach volleyball courts (1)
- Community garden:
 - Interested in beehives (1)
- Covered area:
 - Interested in more covered areas (1)
- Curling:
 - Interested in a curling rink (1)
- Noise:
 - Interested in structures that mitigate noise to the surrounding neighbourhood (1)
- Senior area:
 - Interested in a senior's amenities (1)
- Petting zoo:
 - Interested in a petting zoo (1)
- Lighting:
 - Interested in increasing park lighting (1)
- Outdoor education:
 - Interested in a facility for outdoor education (1)
- Observatory:
 - Interested in including an observatory (1)
 - Interested in increasing the number of lookouts (1)
- Splash pad:
 - Interested in splash pad (1)
- Tennis courts:
 - Interested in increasing the number of tennis courts (1)
- Trails:
 - Interested in increasing the number of multi-use trails (1)
 - Interested in a walking track (1)

The Heart of the Park

Participants were asked if there are elements from the Heart of the Park option, that they did not choose, that they like (e.g., Amphitheatre, arboretum, etc.). The lists below summarize the responses gathered.

NOTE TO READER: Responses are organized from highest volume to lowest volume. When a number is in brackets, example: (4), that number represents the volume of survey responses provided for this comment. Please note that a single person could have commented on several themes.

THE HEART OF THE PARK OPTION ELEMENTS THAT RESONATE:

Most Popular Responses

High popularity elements in the survey:

- Amphitheatre:
 - Interested in an Amphitheatre (17)
 - Disagree with the inclusion of an Amphitheatre (3)
- Arboretum:
 - Interested in an arboretum (8)
- Nature:
 - Interested in keeping the park as natural as possible (6)

THE HEART OF THE PARK OPTION ELEMENTS THAT RESONATE:

Medium Popular Responses

Medium popularity elements in the survey:

- Water play:
 - Interested in increasing water play (4)
- Design options:
 - Interested in incorporating options A and B (4)
- Community orchard:
 - Interested in a community orchard (4)
- Flowering tree walk:
 - Interested in a flowering tree walk (3)
 - Disagree with the inclusion of a flowering tree walk (1)
- Community farm:
 - Interested in a community farm (3)
 - Disagree with the inclusion of a community farm (1)

THE HEART OF THE PARK OPTION ELEMENTS THAT RESONATE:

Least Popular Responses

Low popularity elements in the survey:

- Curling: Interested in curling facilities (1)
- Conservatory: Interested in maintaining the conservatory (1)
- Farmers market: Interested in a space for farmer's markets (1)
- Kids play structure: Interested in a play structure (1)
- Community garden: Disagree with the inclusion of a community garden (1)
 - Notable: Consider a raised sensory garden for wheelchair accessibility and inclusion (1)

Participants were asked if there is programming or structures not included in either Hill option that they would like to see. The lists below summarize the responses gathered.

NOTE TO READER: Responses are organized from highest volume to lowest volume. When a number is in brackets, example: (4), that number represents the volume of survey responses provided for this comment. Please note that a single person could have commented on several themes.

ADDITIONAL PROGRAMMING OR STRUCTURES FOR THE HEART OF THE PARK OPTION: Most Popular Responses

High popularity elements in the survey:

- Dog Park: Interested in a dog off-leash area (4)
- Nature: Interested in keeping the park as natural as possible (5)

ADDITIONAL PROGRAMMING OR STRUCTURES FOR THE HEART OF THE PARK OPTION: Medium Popular Responses

Medium popularity elements in the survey:

- Interested in more accessible off-street parking (2)

ADDITIONAL PROGRAMMING OR STRUCTURES FOR THE HEART OF THE PARK OPTION: Least Popular Responses

Low popularity elements in the survey:

- Amphitheatre:
 - Interested in an Amphitheatre (1)
- Communal Space:
 - Interested in communal space for a variety of programming (1)
- Community Garden:
 - Interested in a community garden (1)
 - Interested in beehives at the community garden (1)
- Curling:
 - Interested in a curling facility (1)
- Covered Area:
 - Interested in a covered area (1)
- Indigenous Art:
 - Interested in Indigenizing the park (1)
- Petting zoo:
 - Interested in a petting zoo (1)
- Flowering tree walk:
 - Interested in a flowering tree walk (1)
- Skatepark:
 - Interested in a skatepark (1)
- Swimming pool:
 - Interested in a pool for competitive swimming (1)
- Water play:
 - Interested in a splash pad for youth (including ages 10-15) (1)
- Food options:
 - Interested in a variety of food options (1)
- Sports rentals:
 - Interested in a sports rental store (1)
- Archery:
 - Interested in an archery centre (1)
- Topography:
 - Interested in increasing the park's topography (1)
- Accessibility:
 - Interested in ensuring the park becomes more accessible (1)