

L'Amoreaux Kidstown Water Park Enhancement

Round 2 Public Meeting
City of Toronto Parks, Forestry and Recreation

December 1, 2020



Land Acknowledgment

I'd like to begin by honouring the land that I'm on. If you are not currently in Toronto, I encourage you to learn about the lands you're on.

We acknowledge the land we are meeting on is the traditional territory of many nations including the Mississaugas of the Credit, the Anishnabeg, the Chippewa, the Haudenosaunee and the Wendat peoples and is now home to many diverse First Nations, Inuit and Métis peoples. We also acknowledge that Toronto is covered by Treaty 13 with the Mississaugas of the Credit.

Purpose of the Meeting

To present preliminary ideas and options, solicit feedback on concepts and confirm design directions towards a preferred concept.

Agenda

6:30pm – Welcome, Introductions

6:35pm – Communications & Consultation Update

6:45pm – Preliminary Design Options and Discussions

7:45pm – Final Overall Questions and Comments

8:00pm – Next Steps and Adjourn

Project Team

CITY OF TORONTO TEAM

Parks, Forestry & Recreation

Joe Ferrara, Sr. Project Coordinator

Katy Aminian, Supervisor, Capital Projects (Acting)

Alex Lavasidis, Sr. Public Consultation Coordinator

Scott Topping, Supervisor Parks Maintenance & Construction

Robert Wright, Supervisor Property Management & Maintenance

Gary Sanger, Supervisor Community Recreation

Ward 22

Nick Mantas, Executive Assistant

Joanne Fusillo Ademaj, Executive Assistant



DESIGN TEAM

PMA Landscape Architects

Fung Lee

Lead Landscape Architect,
Principal

Mehran Ataee

Landscape Architect,
Project Manager

Waiyee Chou

Landscape Designer

Anya Moryoussef Architect

Anya Moryoussef

Director, Architect

Nevena Krilic

Architect

CONSULTATION TEAM

Dept of Words & Deeds

Jane Farrow

Facilitator

Pauline Craig

Notetaker



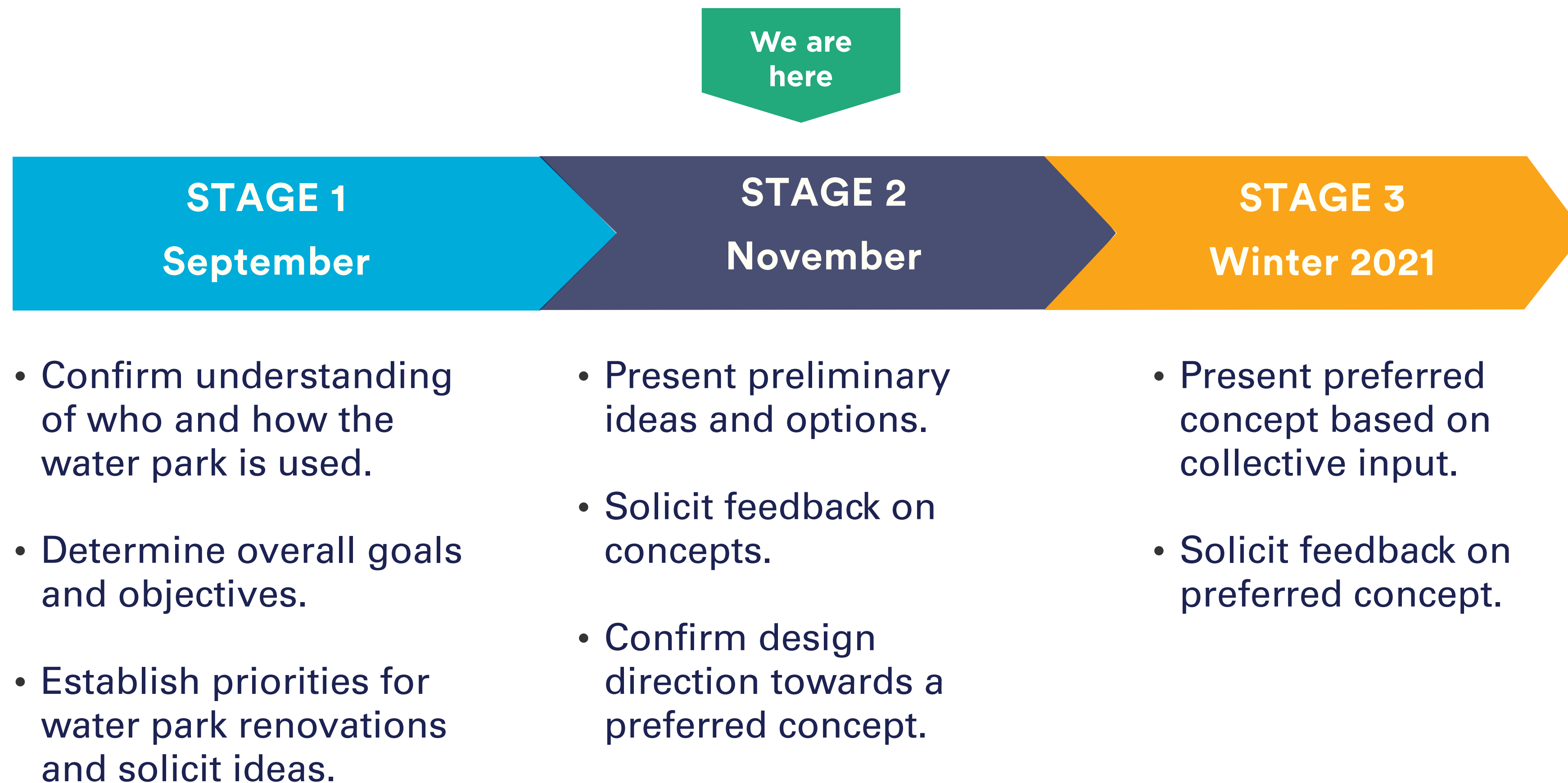
Communications & Consultation Update

Consultation and Project Timelines

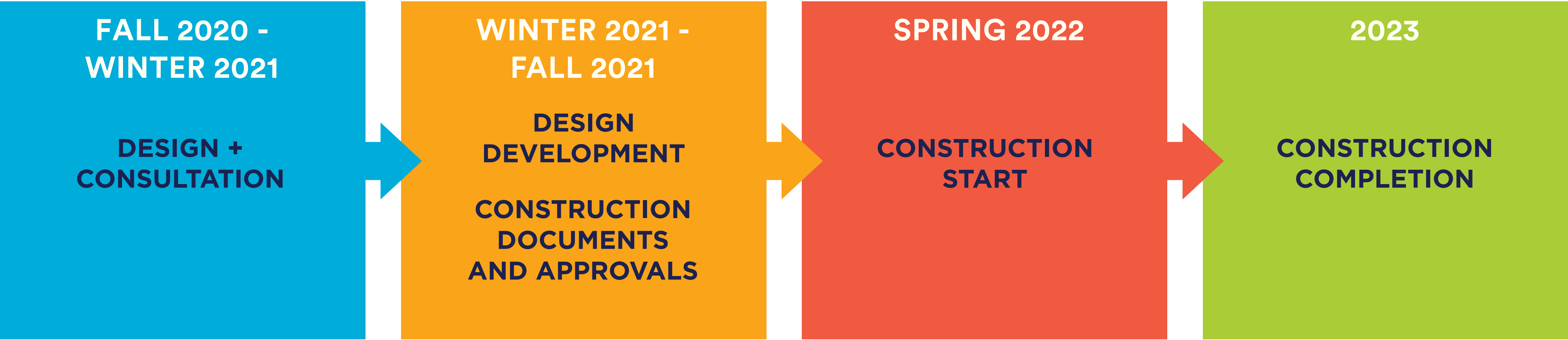
How Did We Get Here?

What We Heard

Consultation Process Overview and Schedule



Anticipated Project Timeline



The proposed schedule is subject to change

Community Outreach & Consultation

September 15, 2020

Online Survey Launched

September 23, 2020

Community Resource Group Meeting #1

September 30, 2020

Virtual Public Information Meeting #1

September 30, 2020

Consultation with Representatives of the Huron-Wendat

November 25, 2020

Community Resource Group Meeting #2

Community Resource Group Meeting #1

1. The water park should remain a water park – as opposed to a splash pad – with opportunities for dynamic play.
2. The diverse needs of kids and their care-givers must be taken into account.
3. Opportunities to increase the size of the water park and improve connection to the broader L'Amoreaux Park.
4. Opportunities should be pursued to meaningfully incorporate Huron-Wendat culture and narratives.

Survey Results

1. 81% visit with family and largest age group is between 4 to 9 years old.
2. 80% drive to Kidstown. 67% say it is difficult to find parking depending on the time of day.
3. Bucket dump, water slide, and multi-platform structure are the top 3 favourite existing features.

Survey Results Continued

4. Large swimming pool, falling water feature, and water slide are the top 3 favourite features to add.
5. 70% think natural/education elements are important.
6. 80% think sustainable elements are important.
7. 80% say they like outdoor shower and change rooms.
8. 87% want to see more shaded seating areas.

Consultation with Representatives of the Huron-Wendat

1. Great opportunity to share knowledge of the site, along with knowledge of traditional way of life.
2. Examples of cultural elements include:
 - o Miniature model of the former village.
 - o Traditional children's games.
 - o Traditional clan symbols: turtle, deer, bear, and beaver.
 - o Use architectural features to showcase Indigenous artwork.
 - o Refer to the legend of creation.

Preliminary Design Concepts

Design Guidelines & Objectives

Create a **fun** destination water park for people of **all ages and abilities**.

Provide a **unique** and **immersive** experience and refer to nearby ecology and Historic Huron-Wendat Village for inspiration.

Enhance **connections** to L'Amoreaux Park and the surrounding community.

Improve **comfort** and **function** for the whole family.

Conceptual Focus

Rethinking Water Play



CELEBRATE WATER



BRING BACK NATURE



RECONNECT WITH HERITAGE



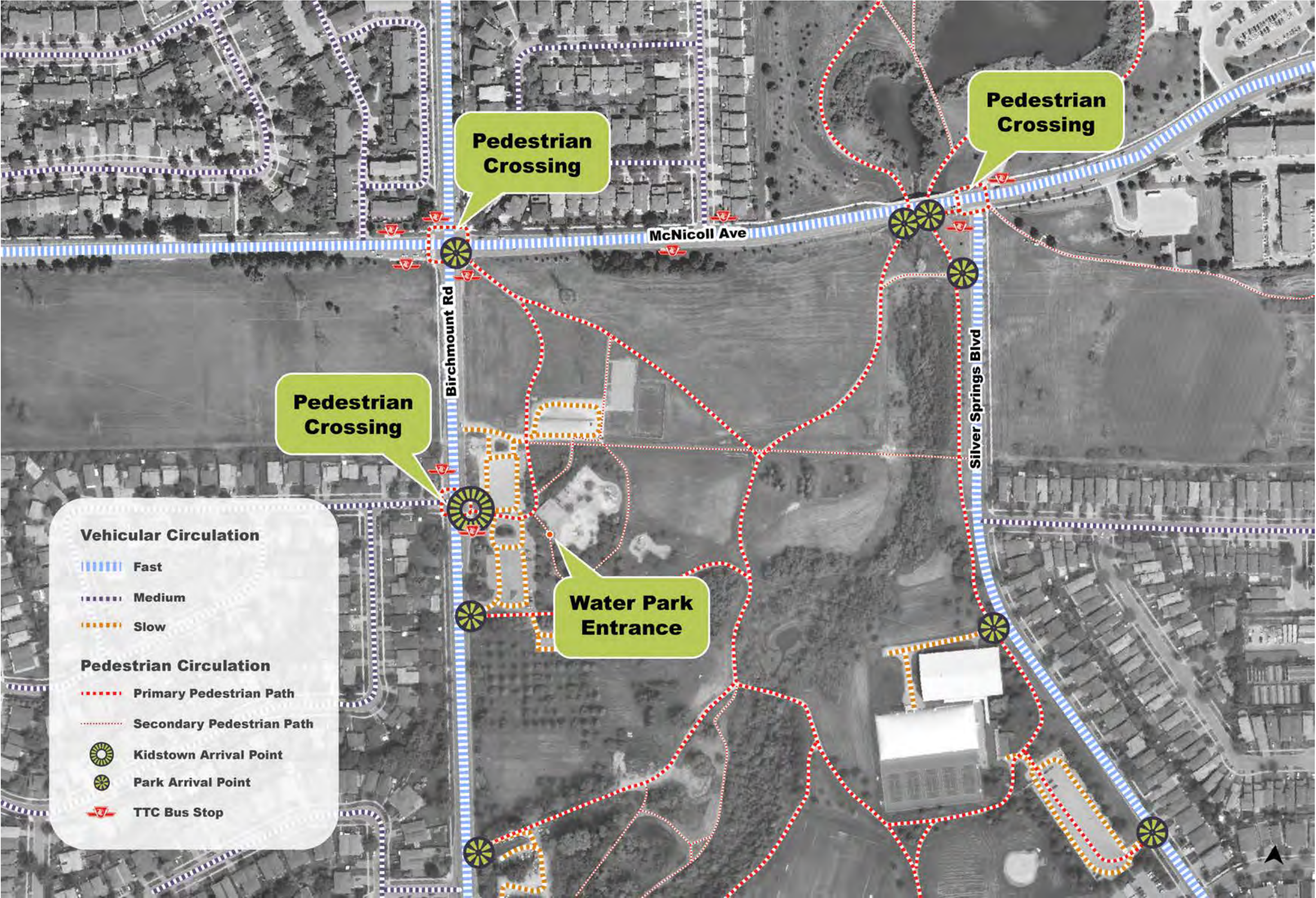
WELCOMING EVERYONE

- 1. Site Context**
- 2. Park Arrival and Circulation**
- 3. Water Park Design**
- 4. Architectural Building Design**

Context







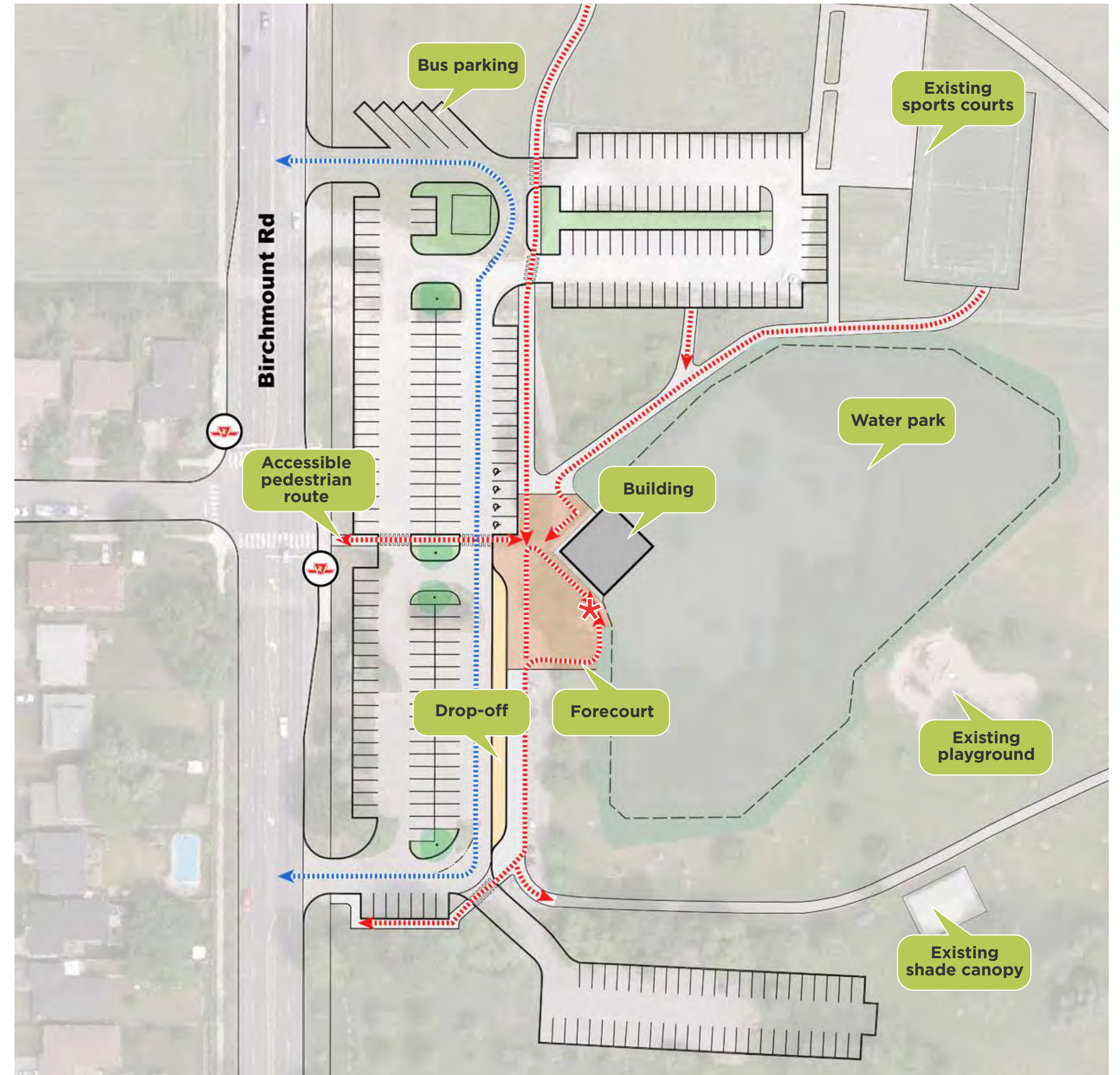
Park Arrival







Park Arrival and Circulation Concepts

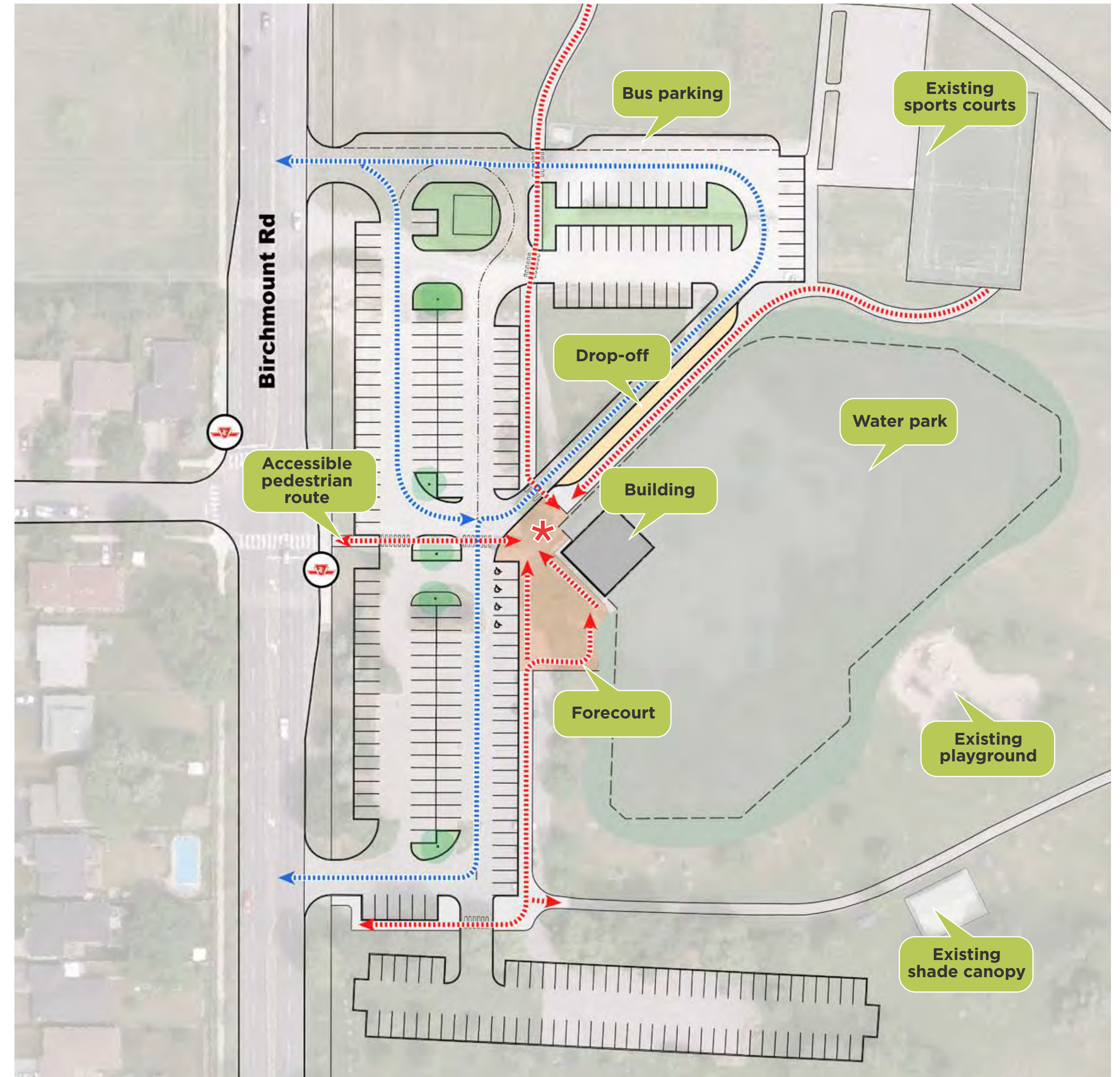
Park Arrival - Concept A

-  Bus / fire route
-  Pedestrian circulation
-  TTC bus stop
-  Entrance to Kidstown







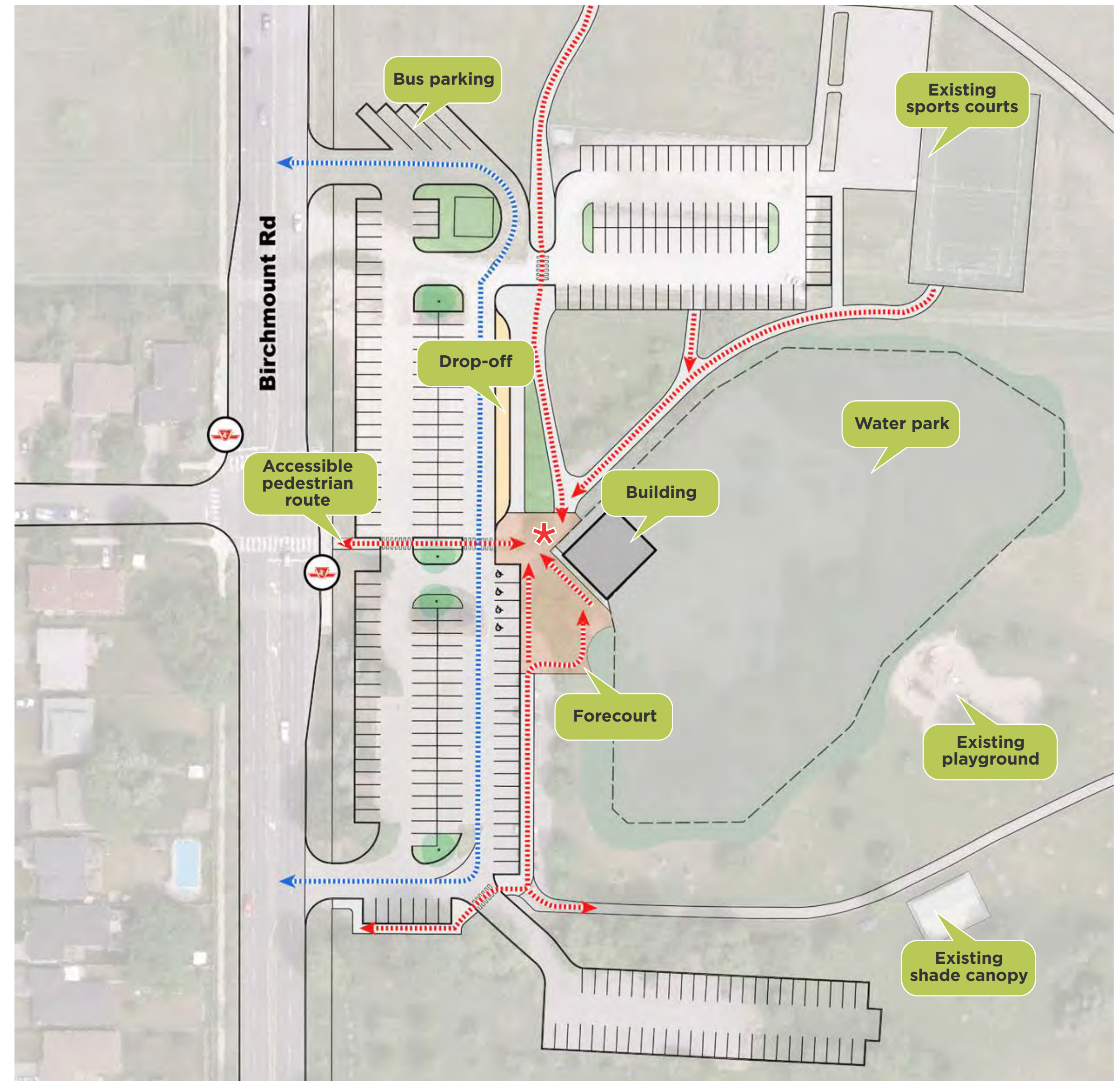
Park Arrival - Concept B

-  Bus / fire route
-  Pedestrian circulation
-  TTC bus stop
-  Entrance to Kidstown



Park Arrival - Concept C

-  Bus / fire route
-  Pedestrian circulation
-  TTC bus stop
-  Entrance to Kidstown



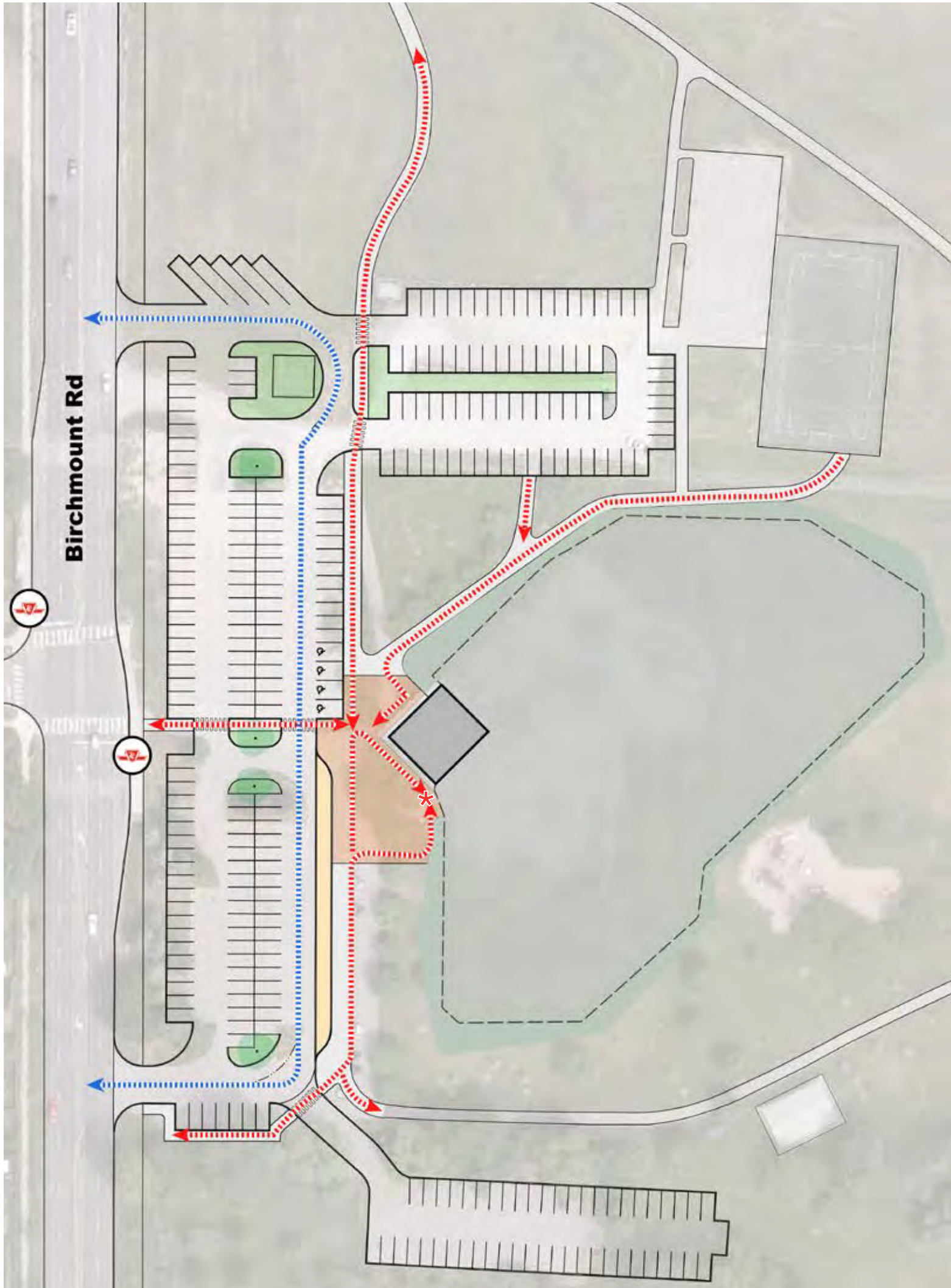


1. Parking Lot and Arrival

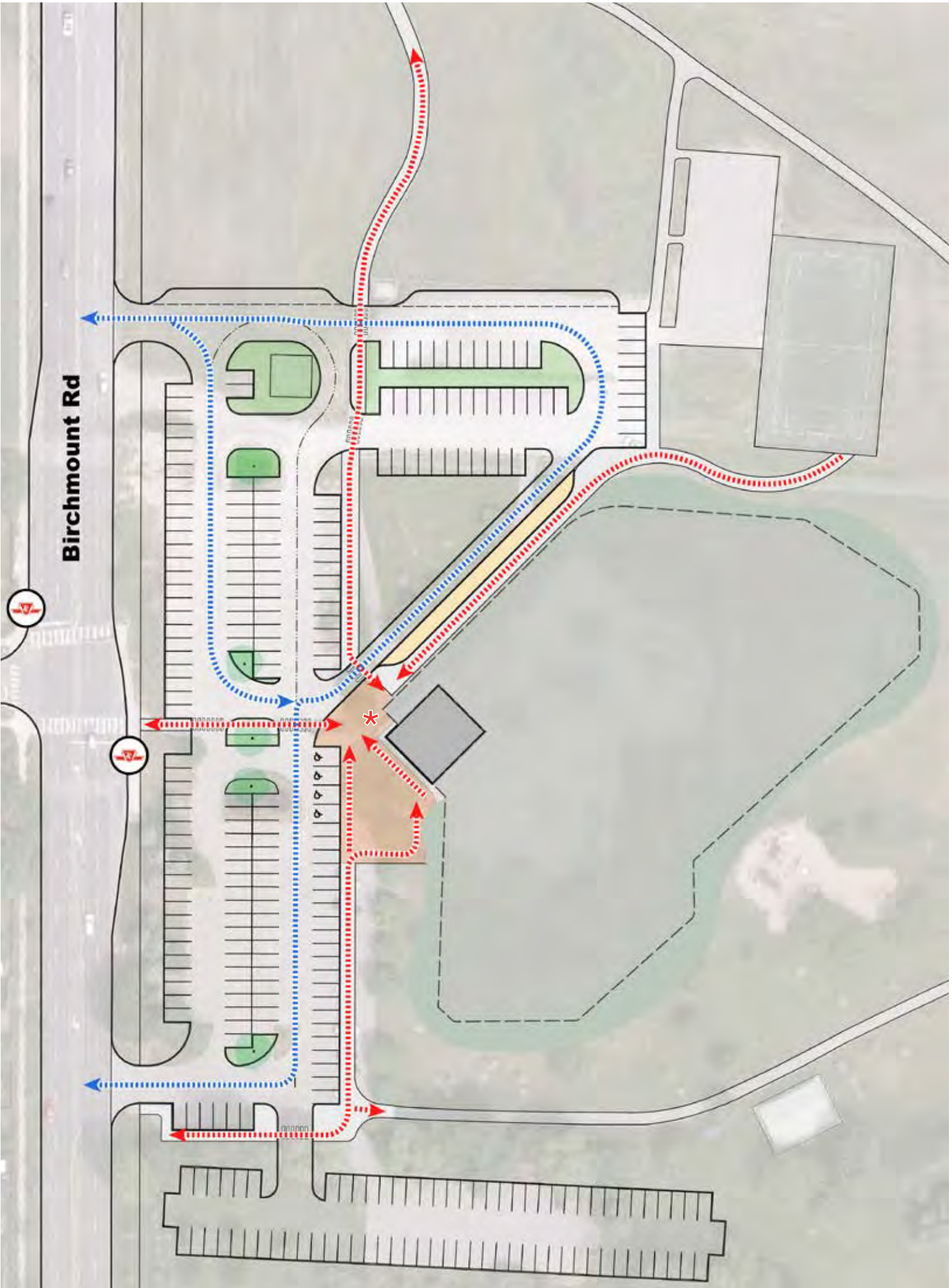
What are your thoughts on:

- a) Options for improving the parking lots.
- b) Circulation and accessibility.
- c) Connection to the park and community.

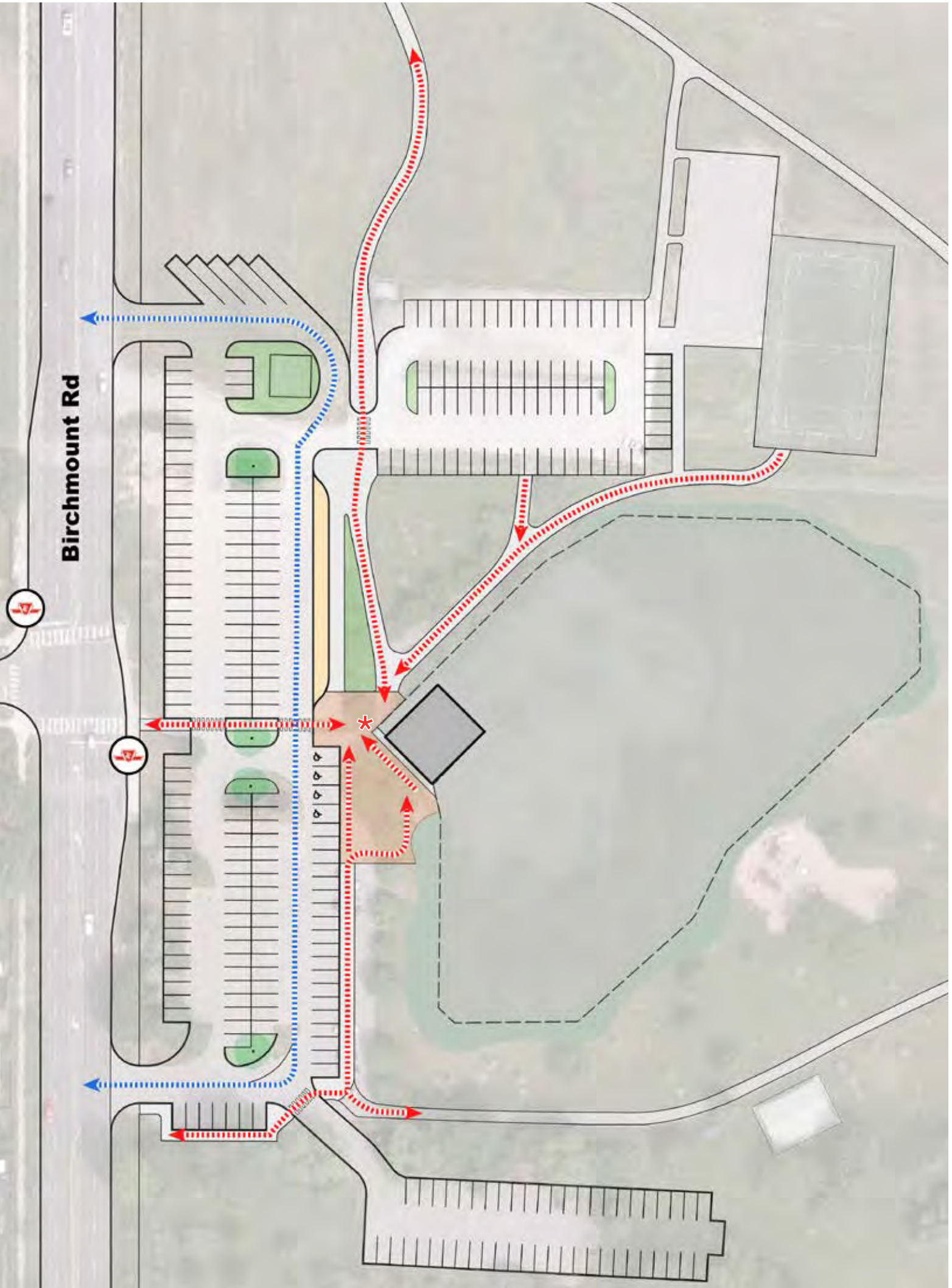
OPTION A



OPTION B



OPTION C

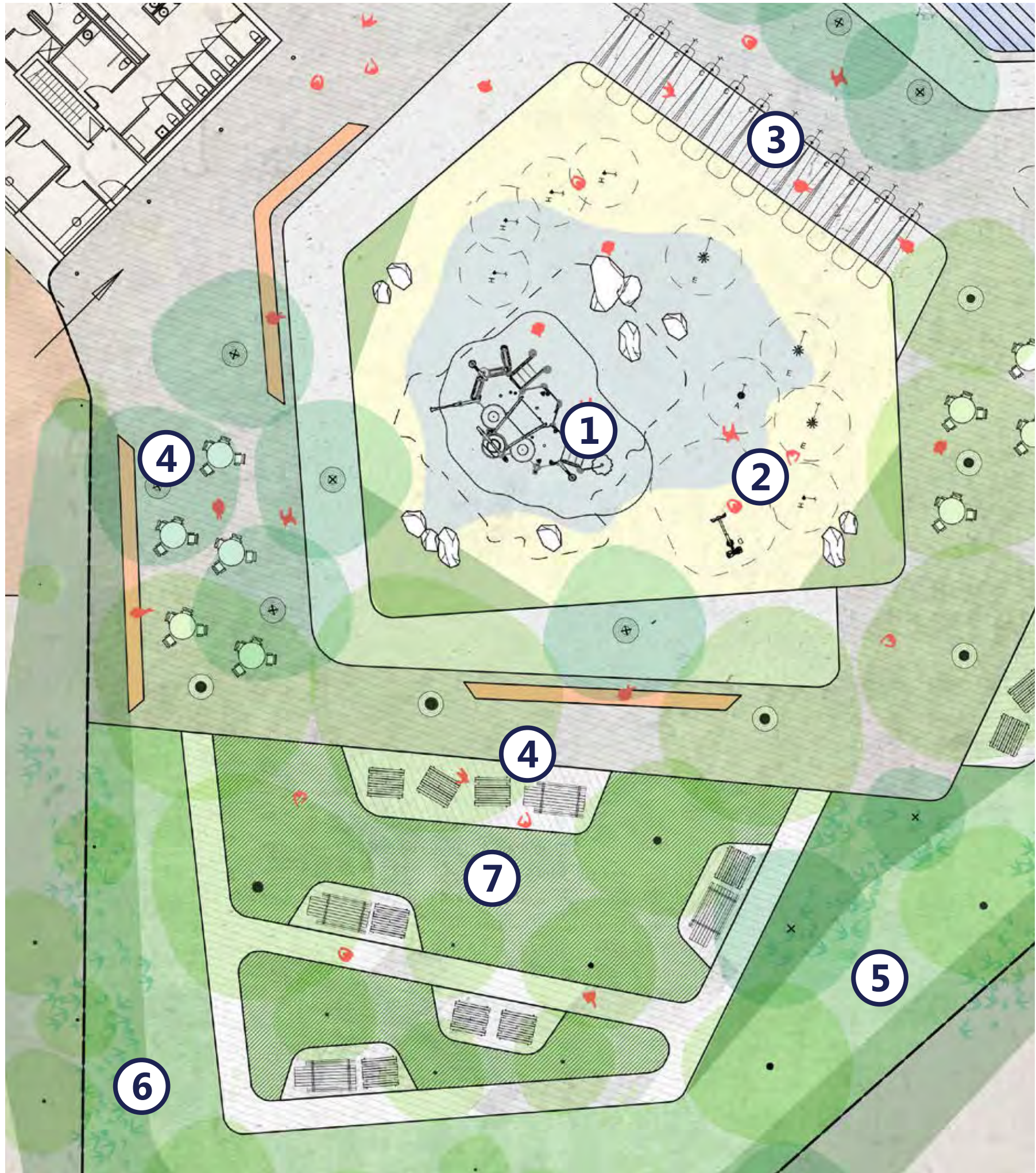


Water Park Design Concepts

Water Park - Concept A - Beach



Concept A - Splash Pad



North



1 Water play structure



2 Various splash pad toys



3 Water tunnel

4 Paved picnic area

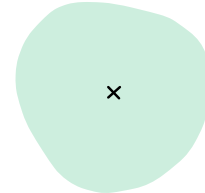
5 Lawn area

6 Naturalized area

7 Artificial turf area



Existing tree



New tree

Concept A - Pool and Hill



⑥ Pool deck with seating

⑦ Shade structure

⑧ Bioswale with stepping stones

• Existing tree

x New tree

Concept A - Seating Areas

- Public picnic area
- Permitted picnic area

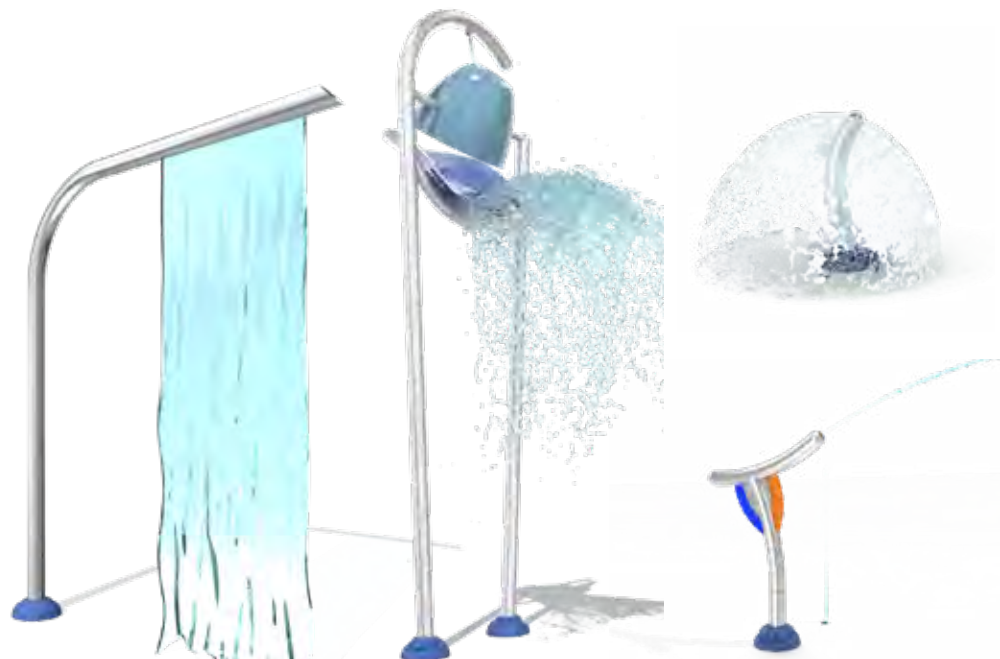
- ① Picnic tables
- ② Tables and chairs
- ③ Chaise lounge
- ④ Linear seating
- ⑤ Stepped pool seating
- ⑥ Lawn picnic area



Water Park - Concept B - River



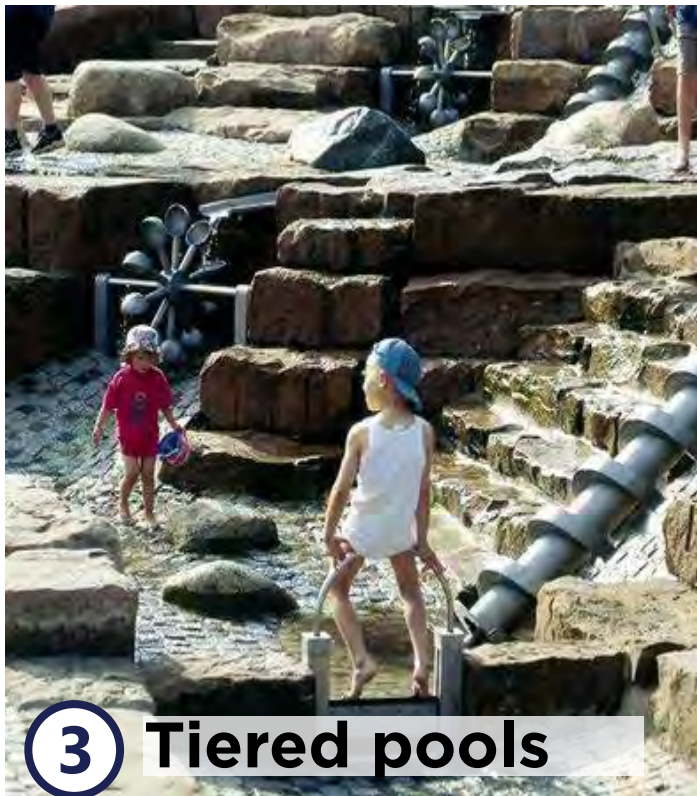
Concept B - Splash Pad and Hill



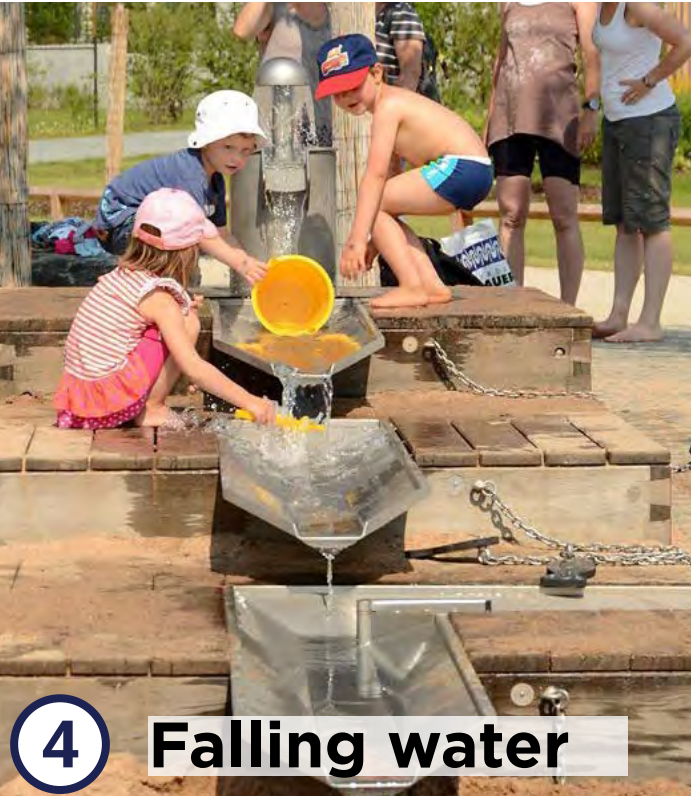
1 Splash pad toys



2 Water room



3 Tiered pools



4 Falling water



5 Runnels



6 Hill & boulders

7 Paved picnic area

8 Lawn area

9 Naturalized area

10 Bioswale

Existing tree

New tree

Concept B - Pool



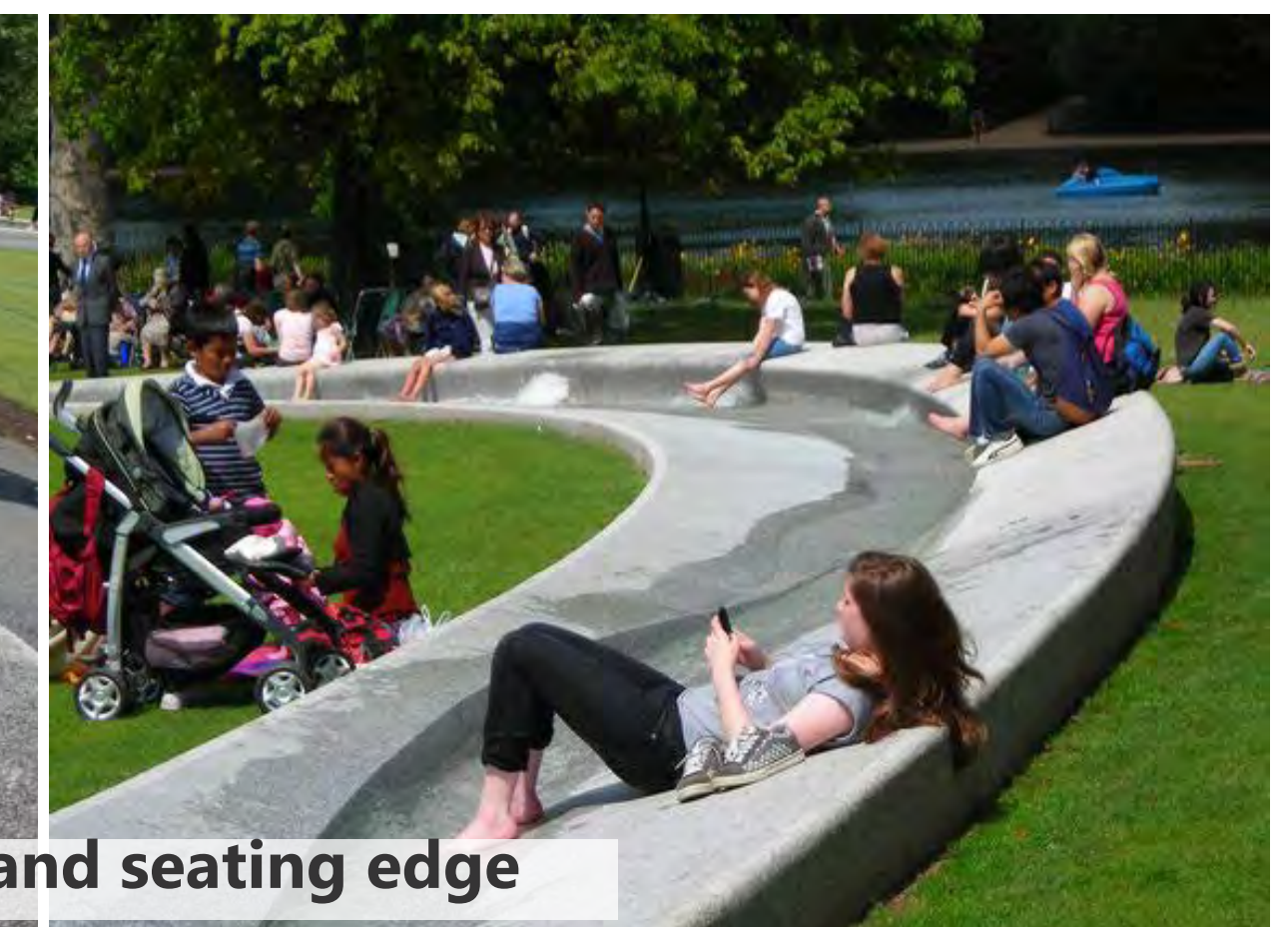
① Pool with beach entry and spray toys



② Grate & mist



③ Canal with bubblers and seating edge



④ Paved picnic area

⑤ Lawn area

⑥ Naturalized planting

⑦ Custom seating

⑧ Shade structure

⑨ Artificial turf area

● Existing tree

× New tree

Concept B - Seating Areas

- Public picnic area
- Permitted picnic area

- ① Picnic tables
- ② Tables and chairs
- ③ Chaise lounge
- ④ Linear seating
- ⑤ Canal edge seating
- ⑥ Lawn picnic area



Water Park - Concept C - Lake



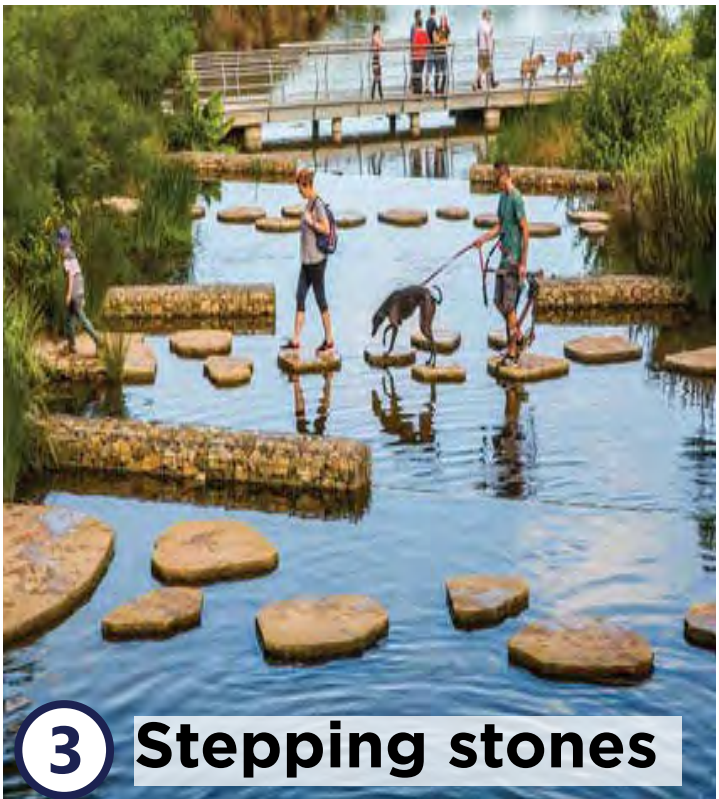
Concept C - Pool and Hill



1 Pool and terrace inspiration



2 Terraced seating areas



3 Stepping stones



4 Rope bridge



5 Waterfall

6 Deck / Diving area

7 Lawn area

8 Naturalized area

9 Bioswale



Existing tree



New tree

Concept C - Splash Pad



1 Boulders and jets



2 Wood spray toys



3 Stream feature



4 Suspension bridge



5 Sand play

6 Paved picnic area

7 Lawn area

8 Naturalized area

• Existing tree

× New tree

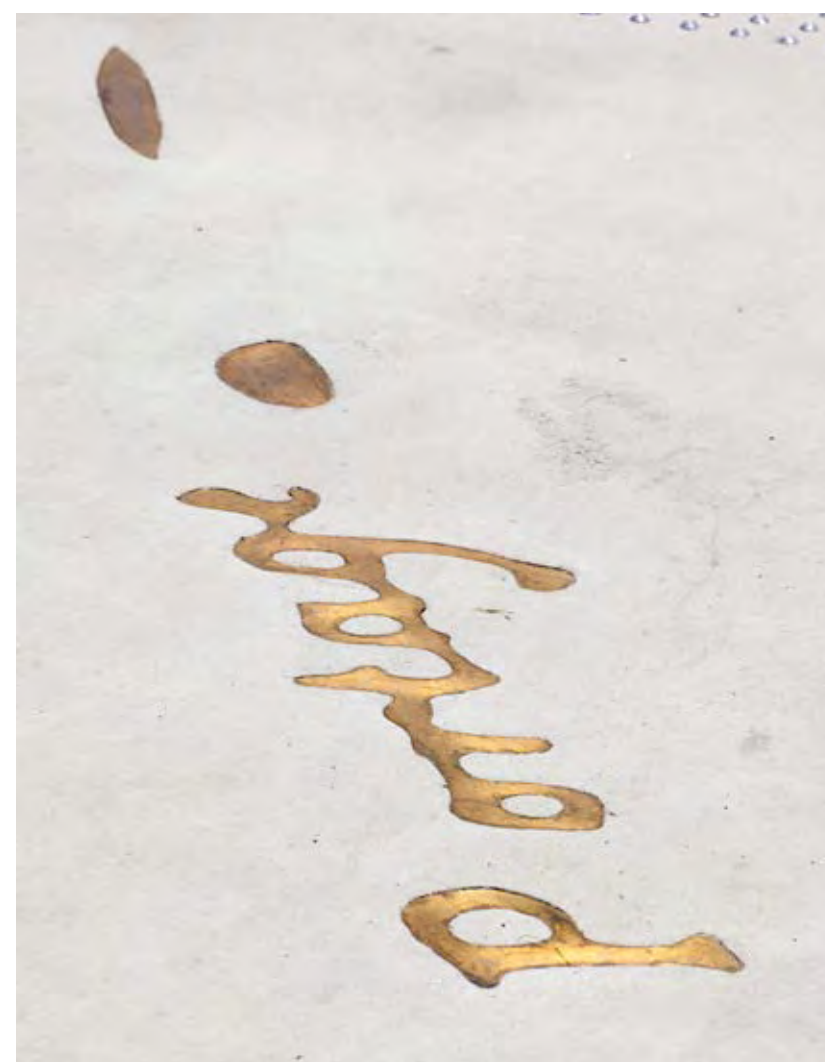
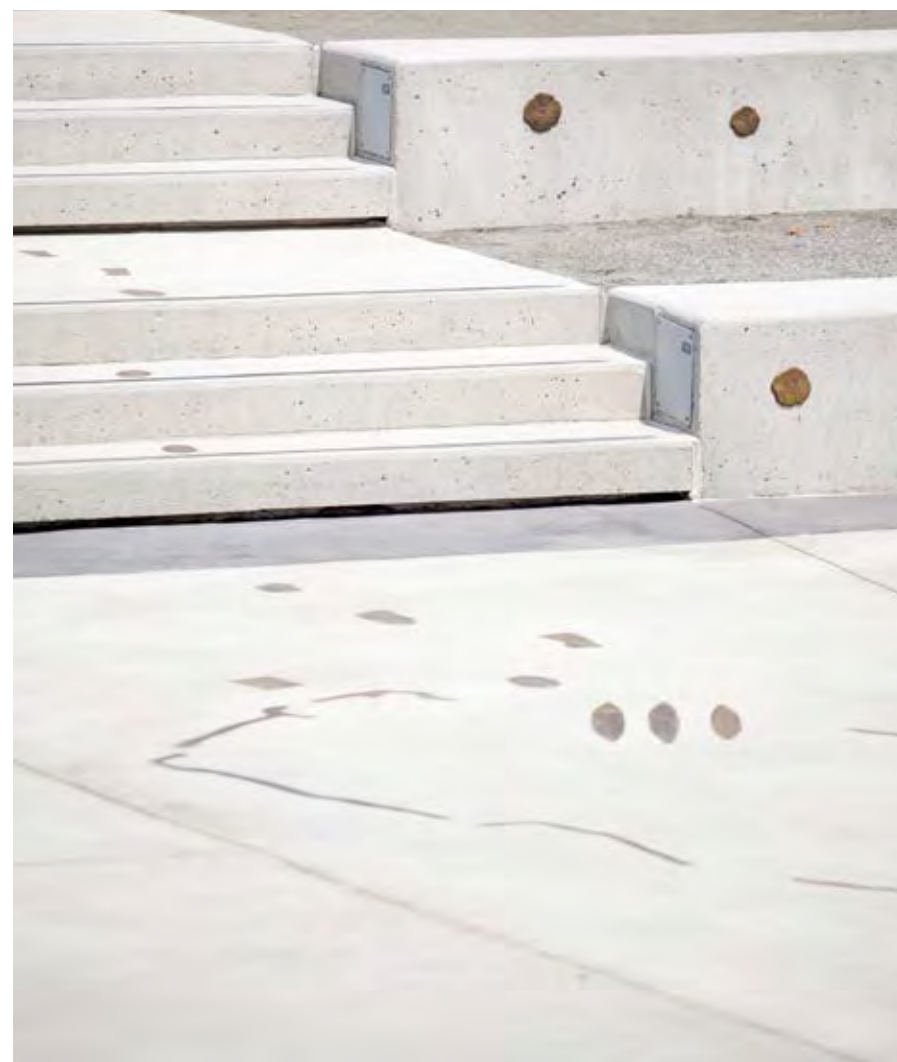
Concept C - Seating Areas

- Public picnic area
- Permitted picnic area

- ① Picnic tables
- ② Tables and chairs
- ③ Chaise lounge
- ④ Lawn picnic area



Common Elements: Indigenous Placemaking



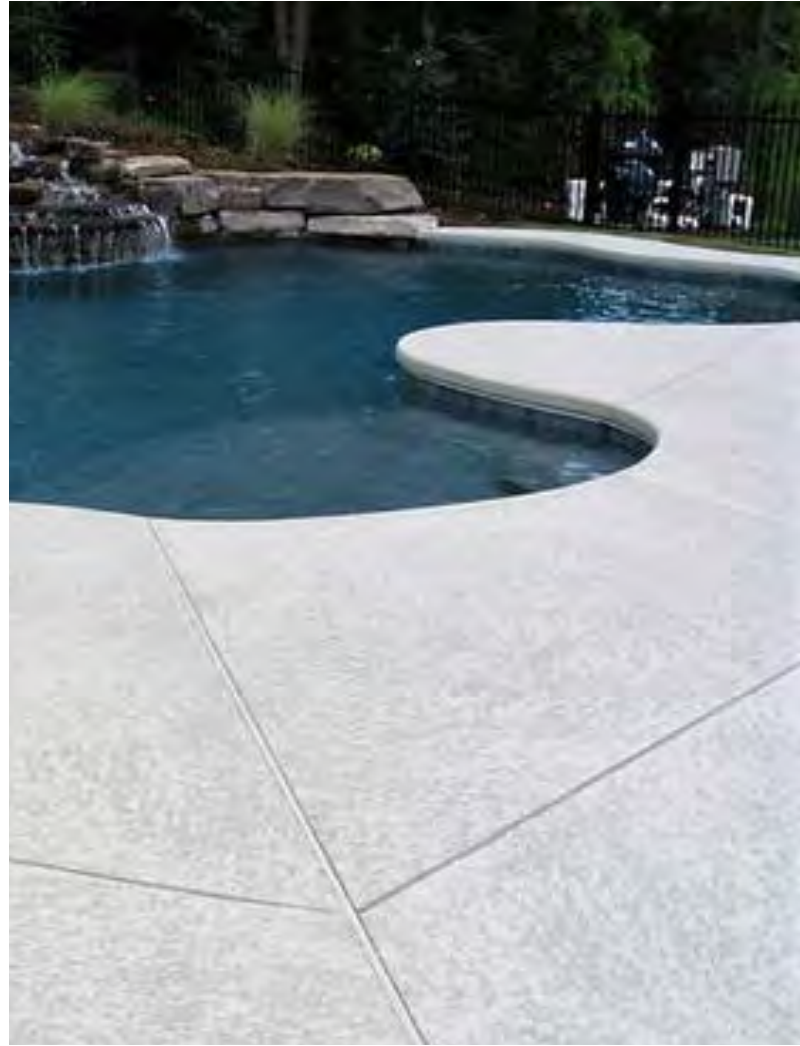
Common Elements: Naturalization and Play



Common Elements: Cognitive and Inclusive Play



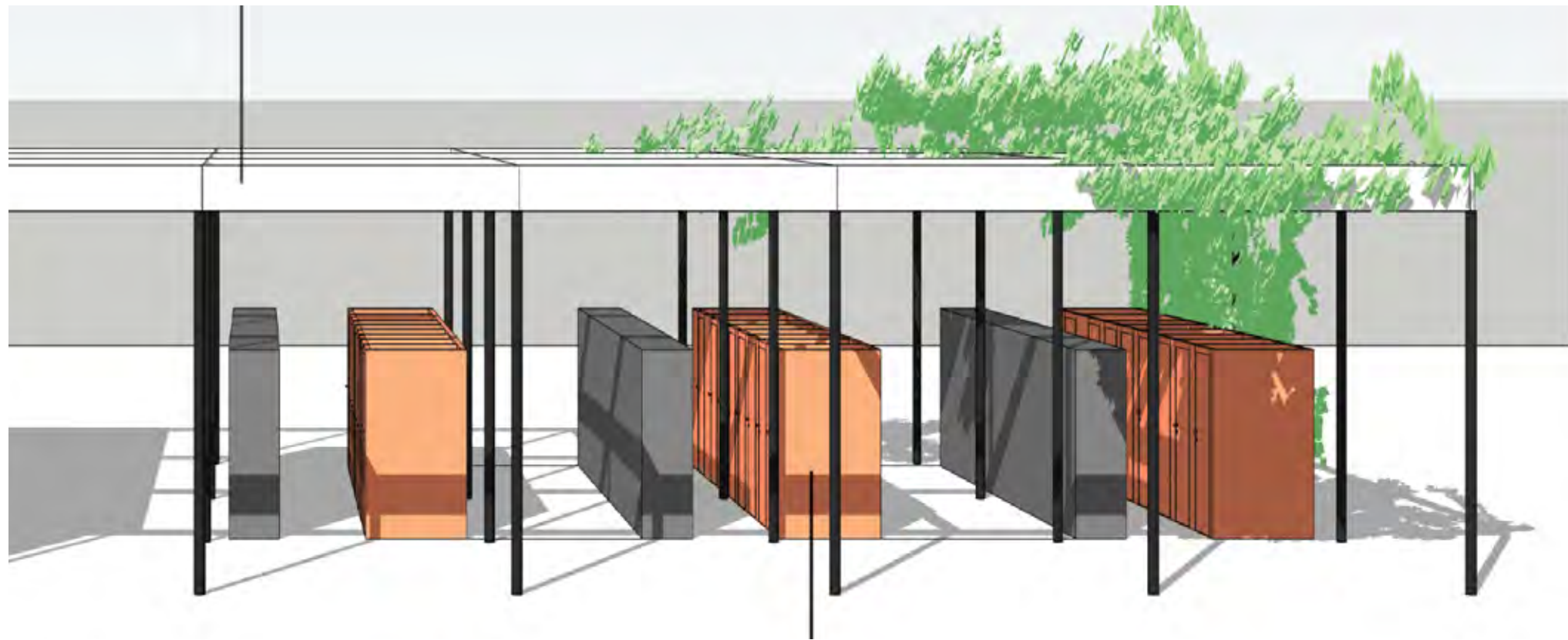
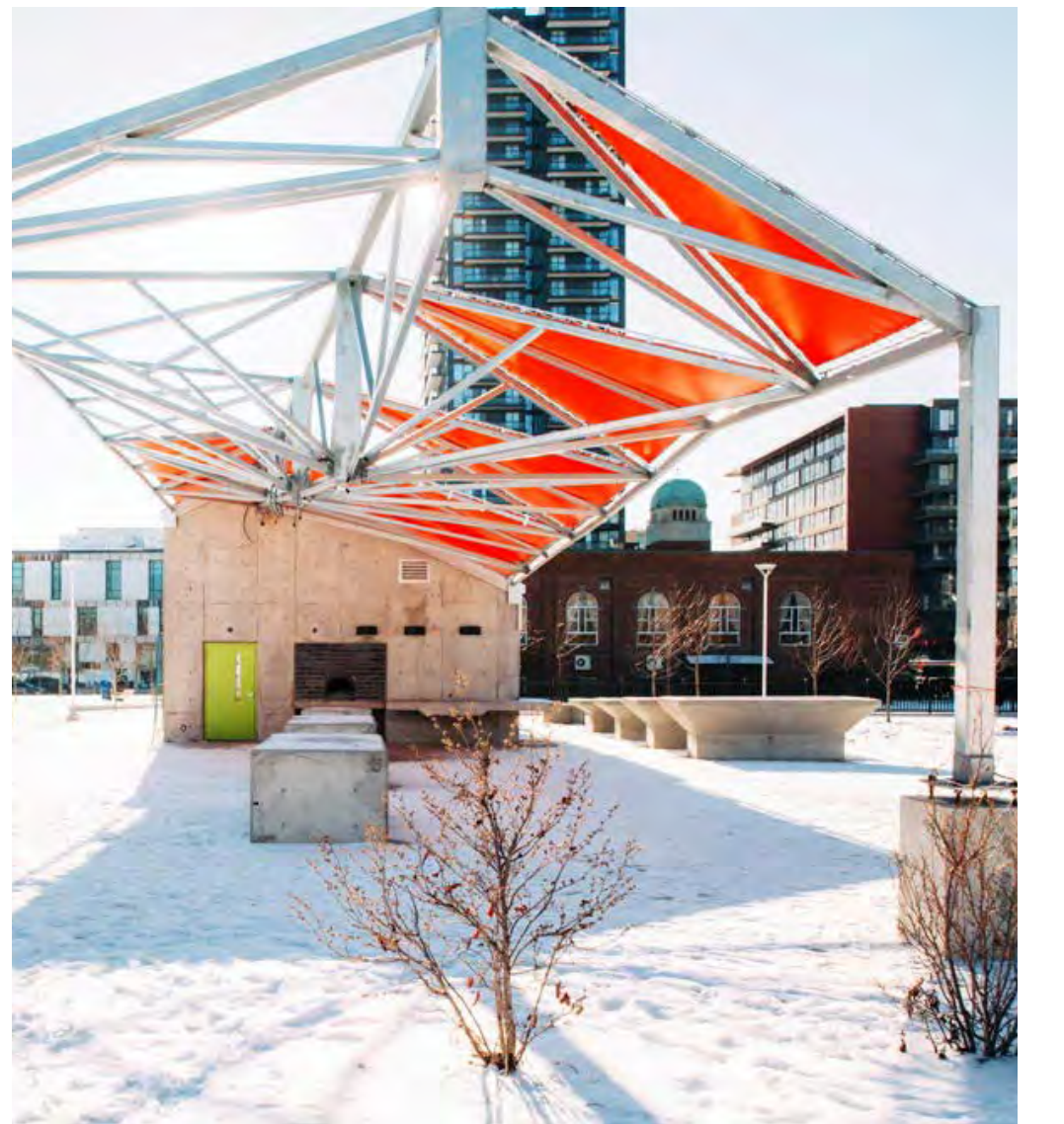
Common Elements: Materials



Common Elements: Furnishings and Shade



Common Elements: Shade





2. Water Park Layout and Programming

Which option do you like overall?

Which features do you like from each concept?

OPTION A - Beach



OPTION B - River



OPTION C - Lake





3. Play Elements

What are your thoughts on:

- a) Play elements shown in different concepts.
- b) How the hill is integrated in different concepts.
- c) Ideas for natural and cognitive play.
- d) Do these designs accommodate for parents and children with special needs.



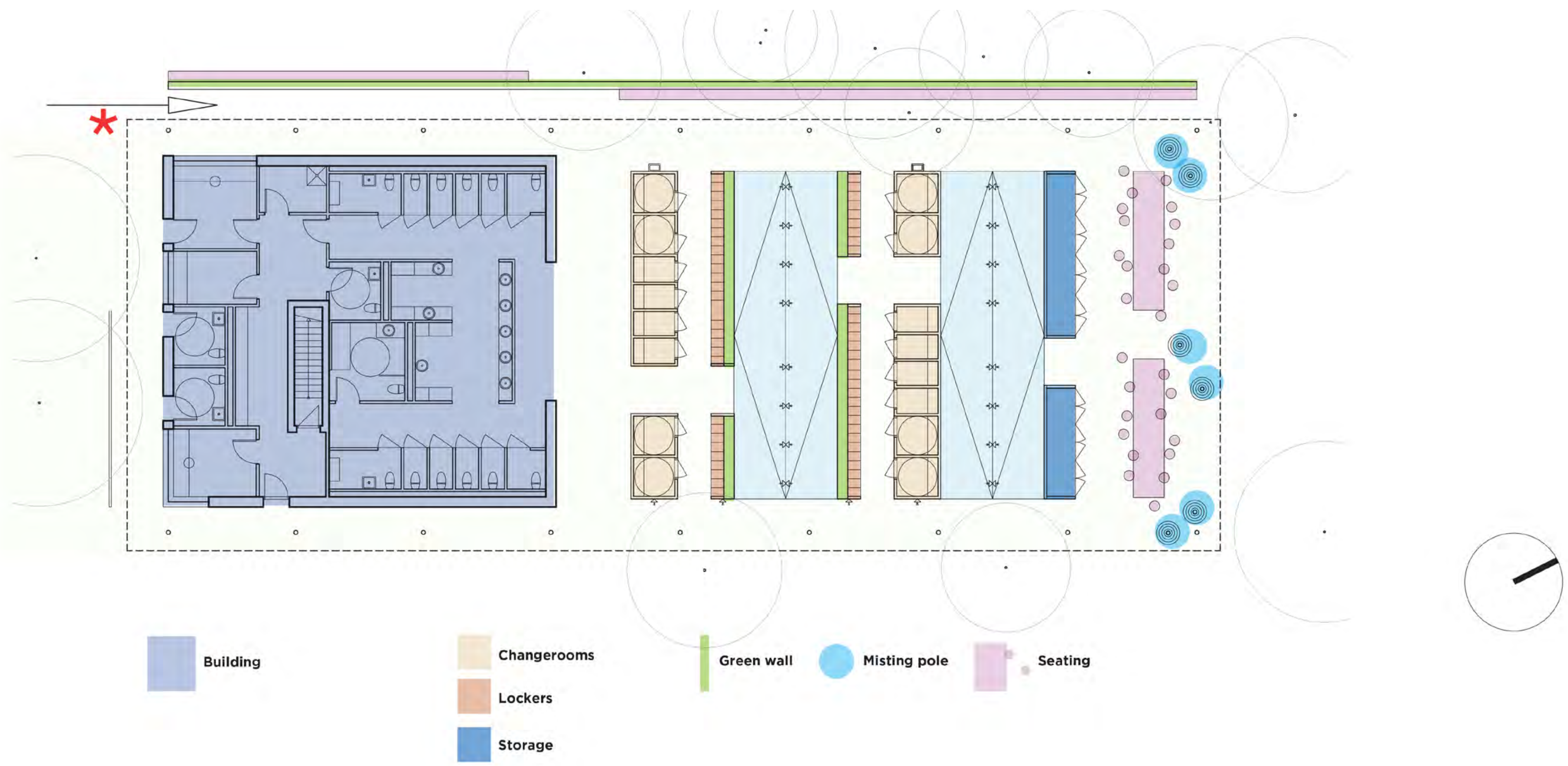
4. Renaturalization and Greenspace

What are your thoughts on:

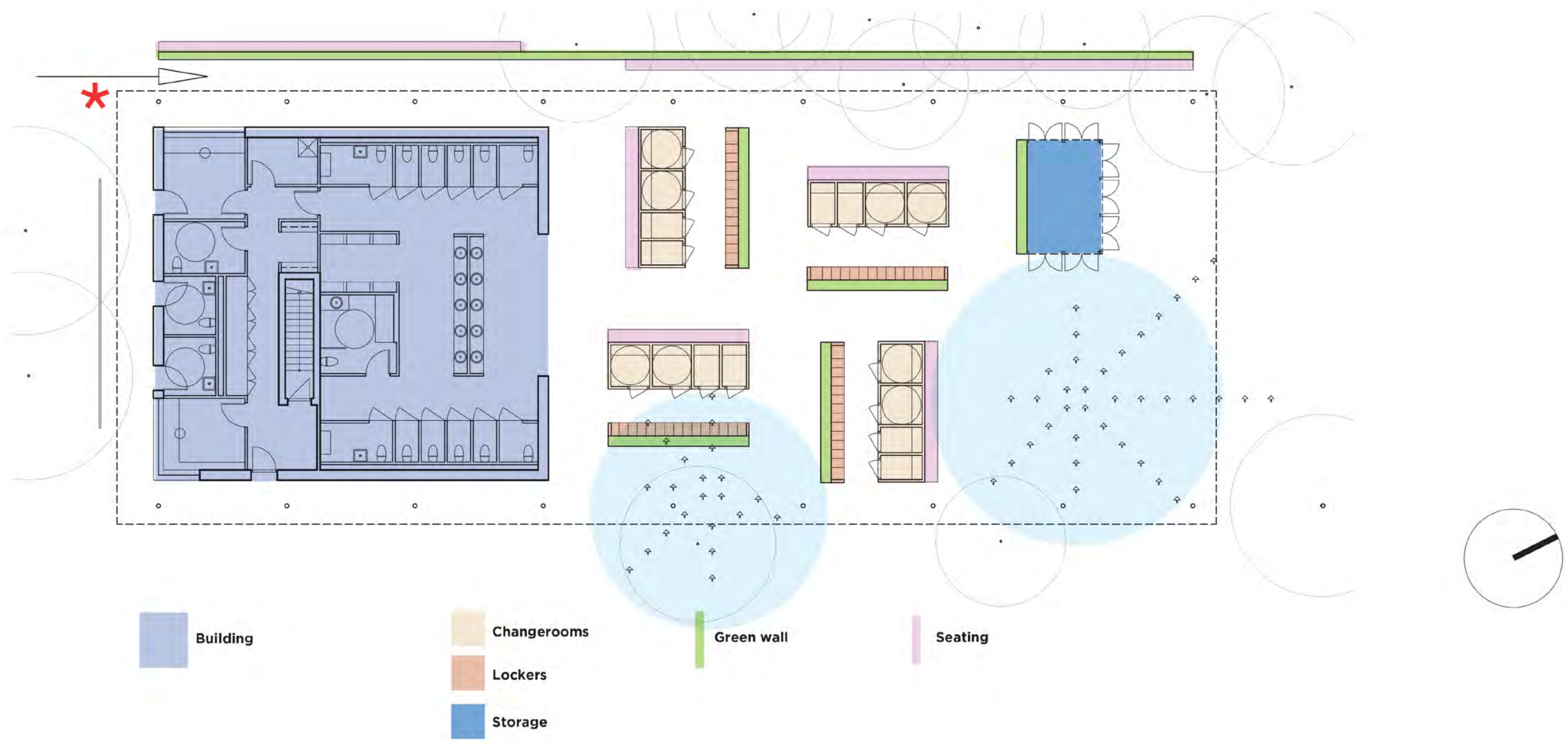
- a) Naturalizing the perimeter of the site.
- b) Introducing a bioswale feature.
- c) Do these natural features accommodate for parents and children with special needs.

Architectural Building Design

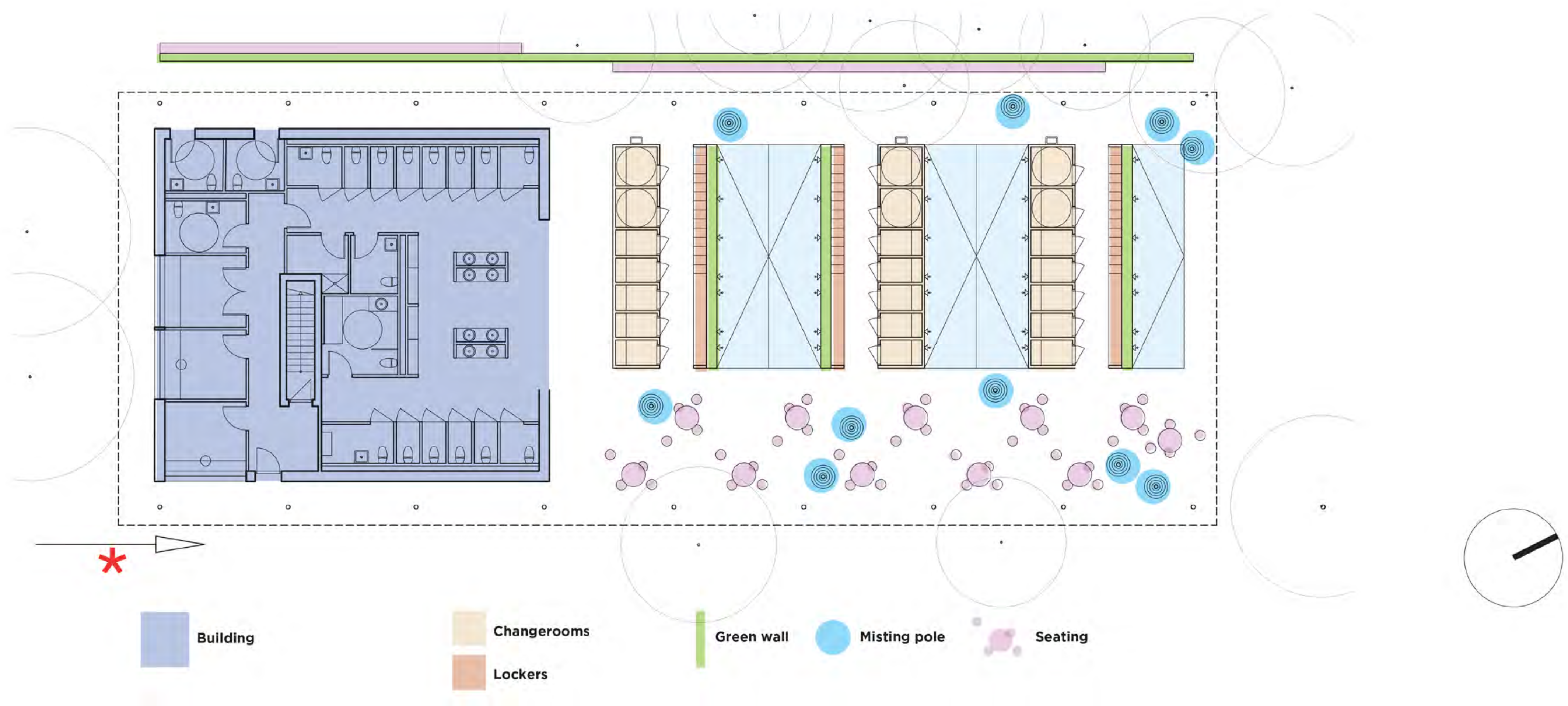
Building Design Concept A - Meander



Building Design Concept B - Clusters



Building Design Concept C - Grid

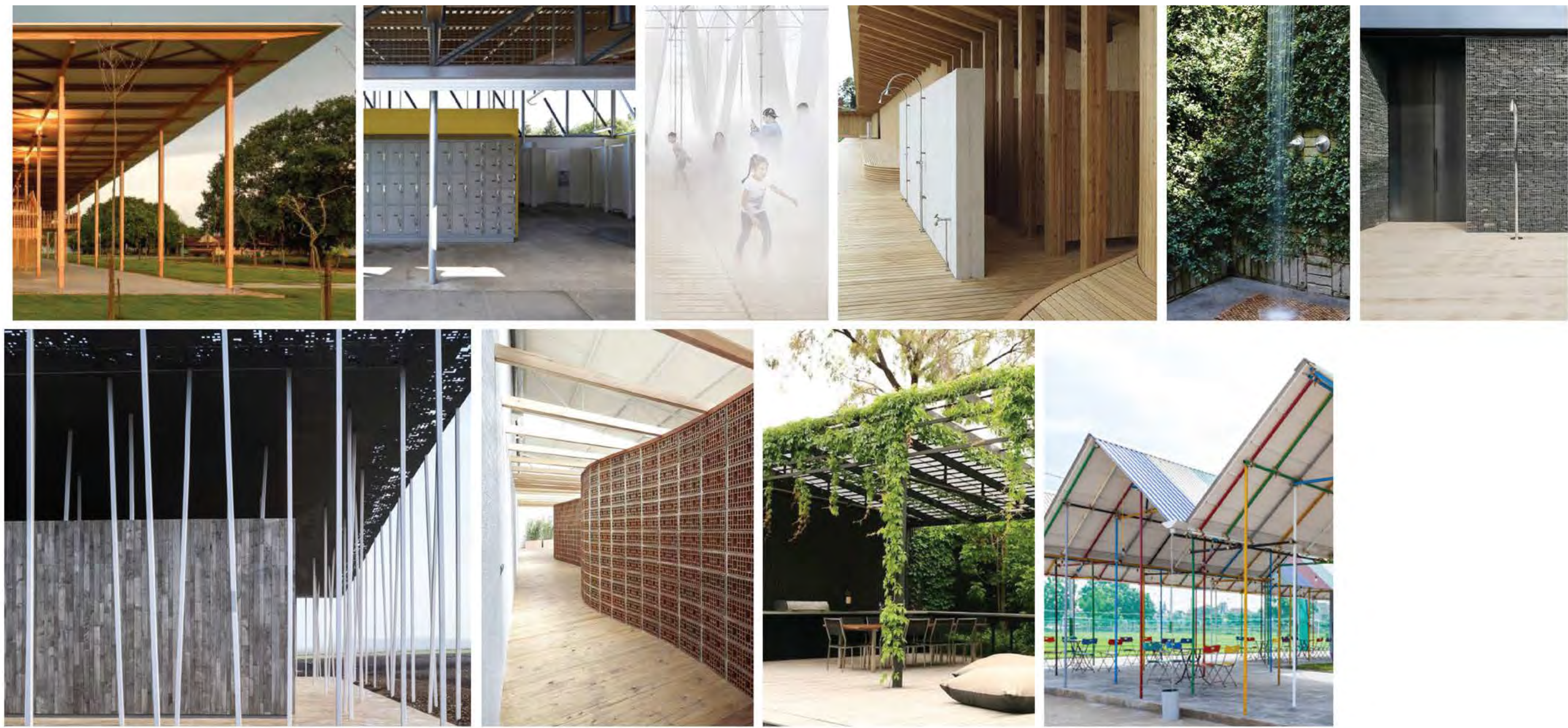


Base Building Options

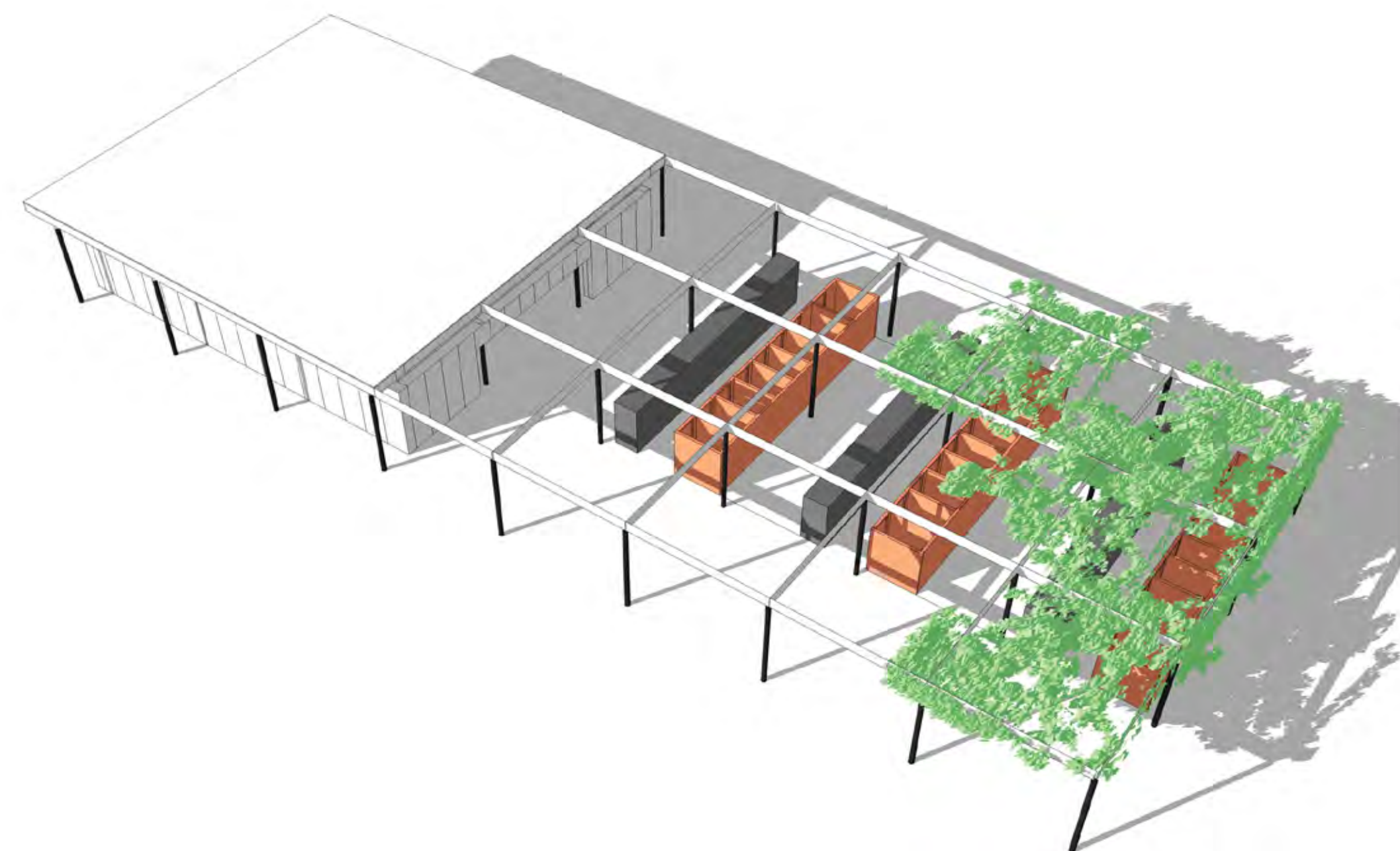


Base Building Options / Programme Breakdown

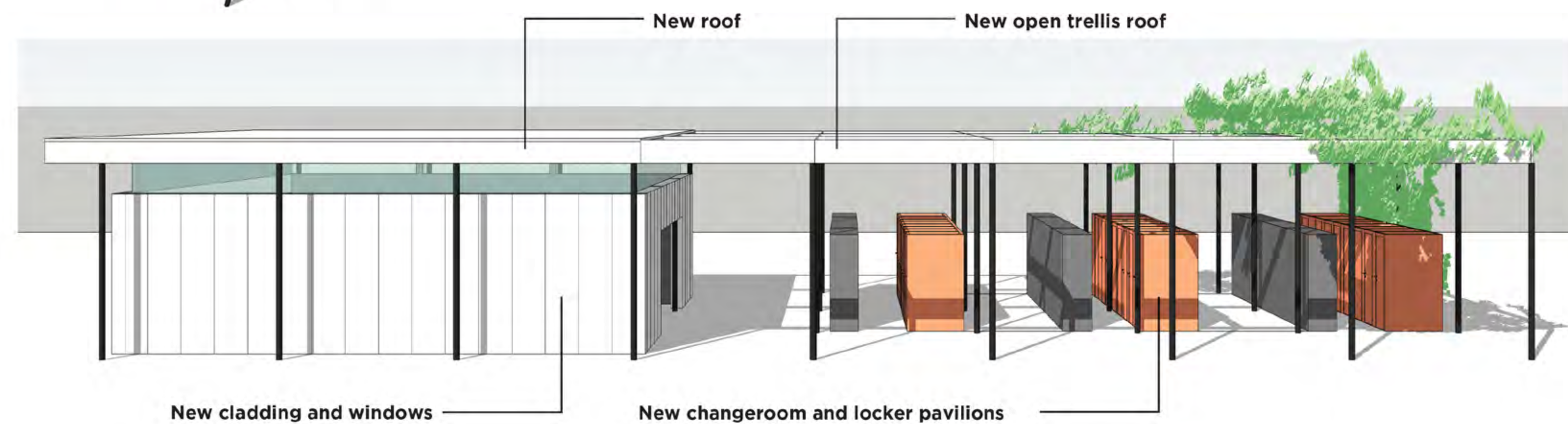
Precedents



3D Concept Images



Bird's eye view



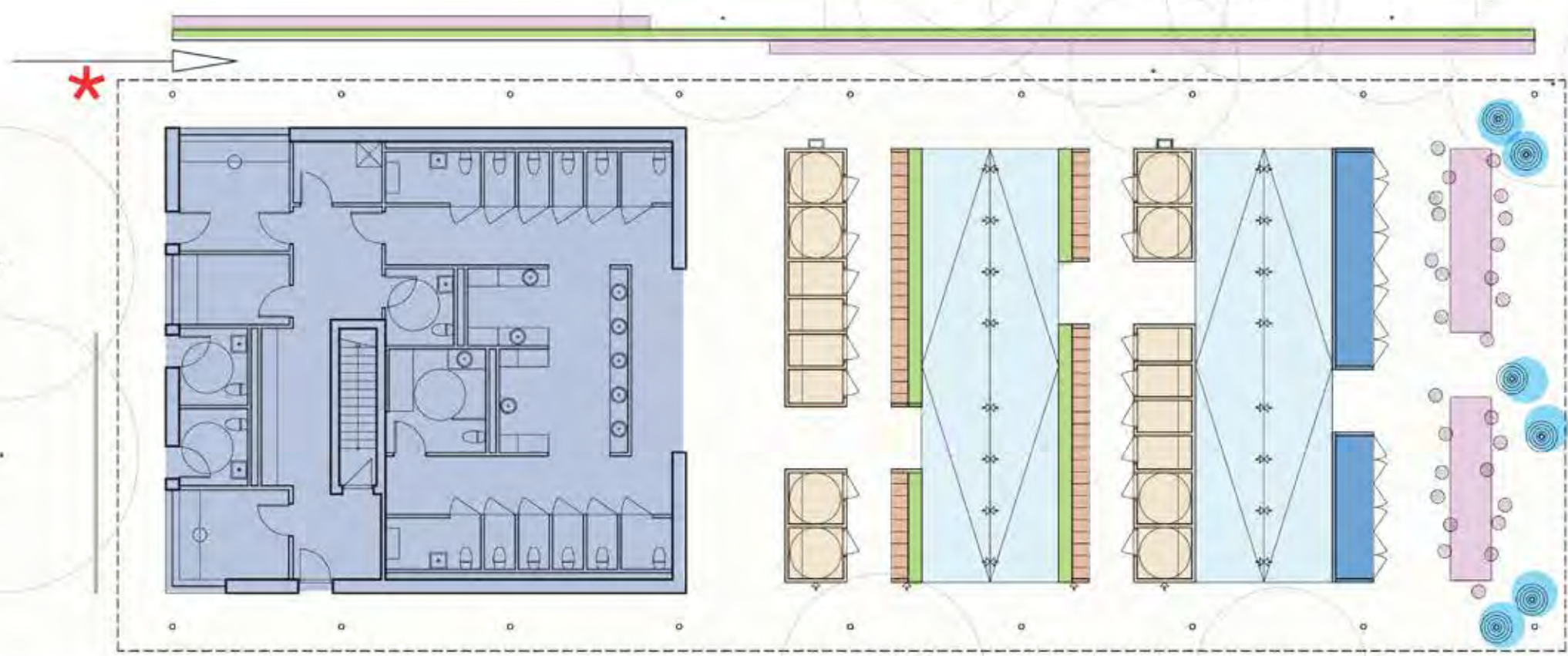


4. Architectural Features

What are your thoughts on:

- a) The large shade canopy.
- b) Change room and shower facilities.
- c) Availability and location of concession stand.

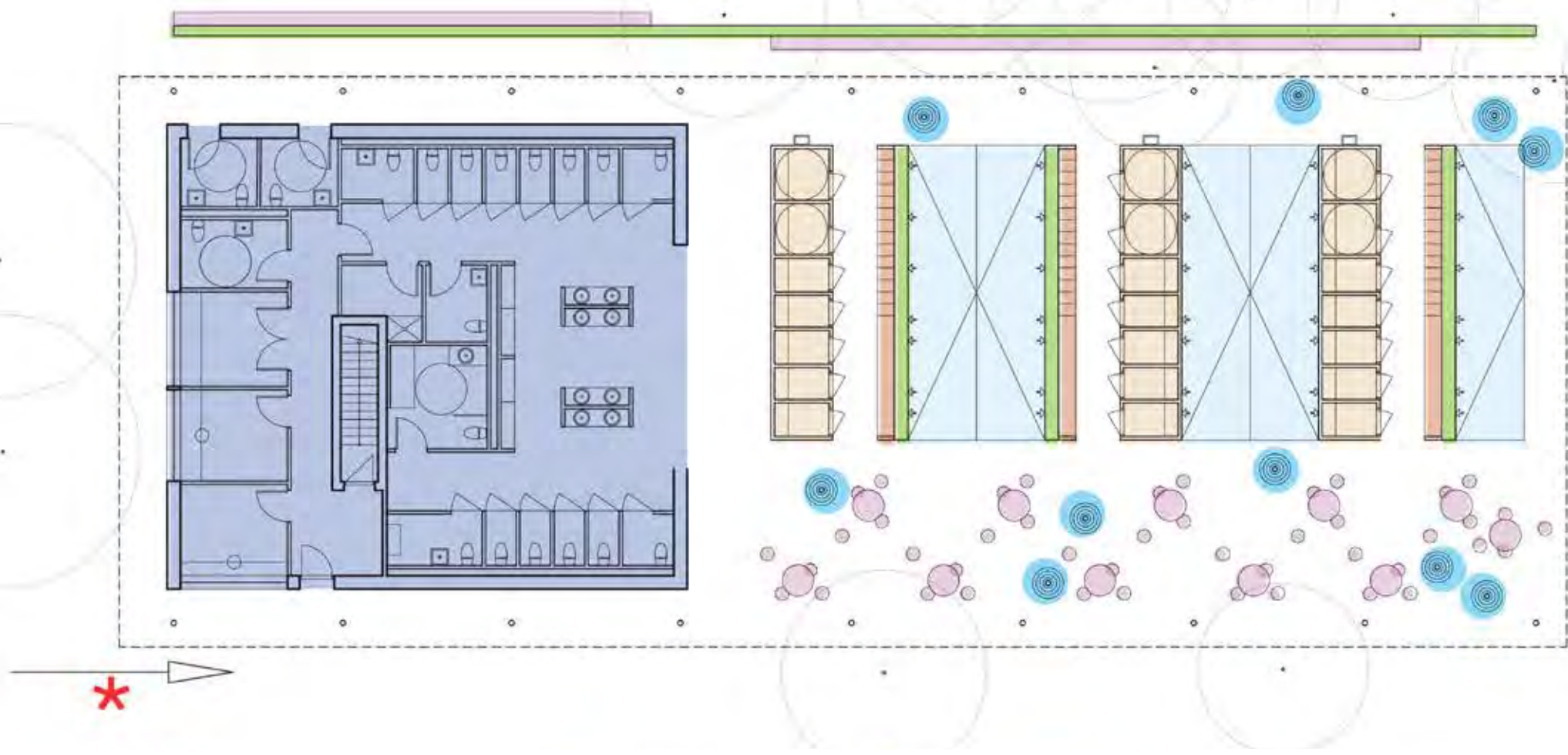
OPTION A - Meander



OPTION B - Clusters



OPTION C - Grid



OPTION A

Base Building Option 1 / N Entry



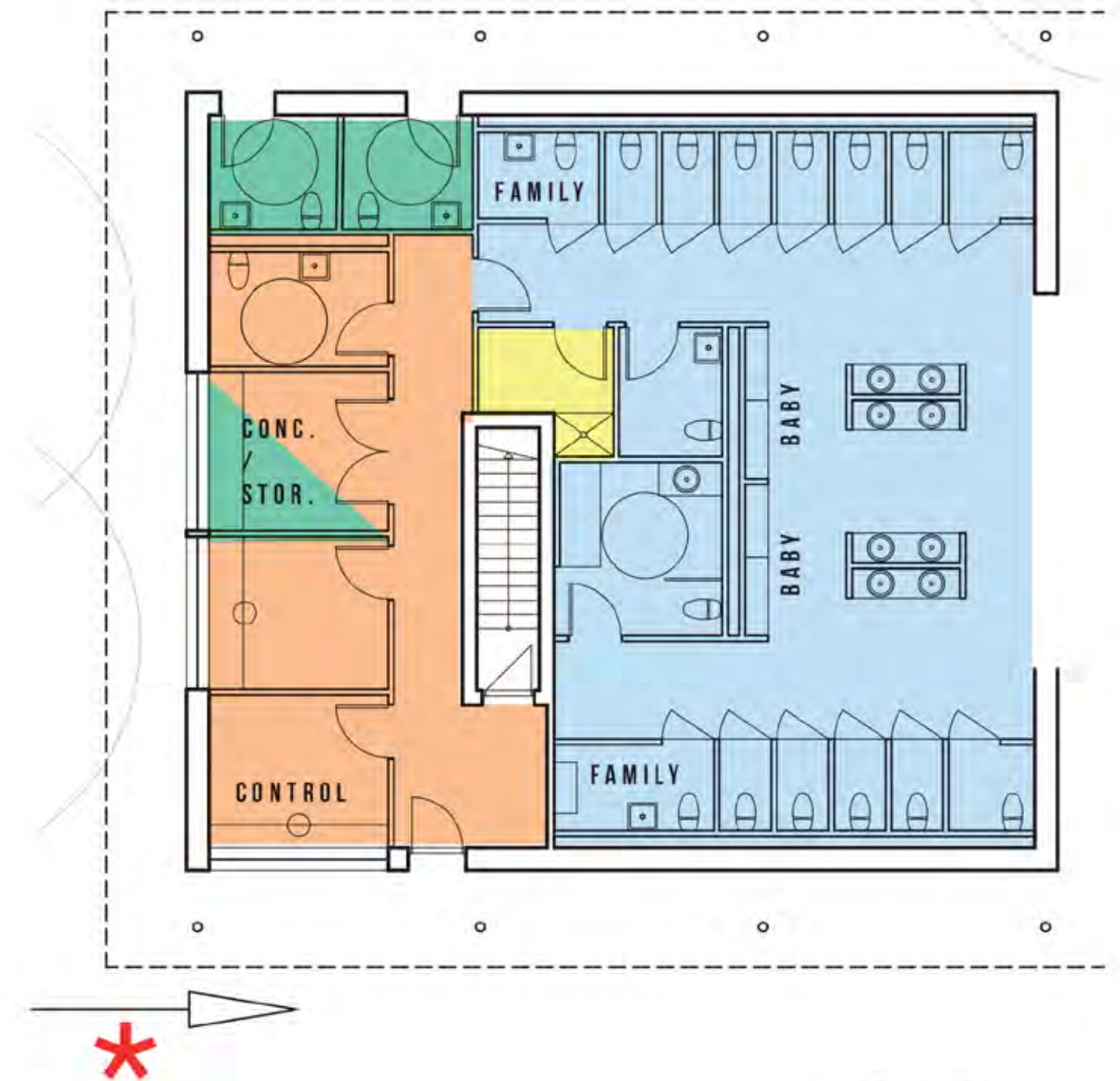
OPTION B

Base Building Option 2 / N Entry



OPTION C

Base Building Option 3 / S Entry



Visitor facilities Staff facilities Park facilities Janitorial





1. Do you have any remaining questions or comments?

Next Steps...

Next Steps

Feedback:

- Online Survey - available until December 31st.
- Email comments to jane@janefarrow.ca by December 22nd.

Please publicize the online survey through your networks.

Please visit the project web page for more details or to view the presentation again:

www.toronto.ca/KidstownRedesign



Thank you!