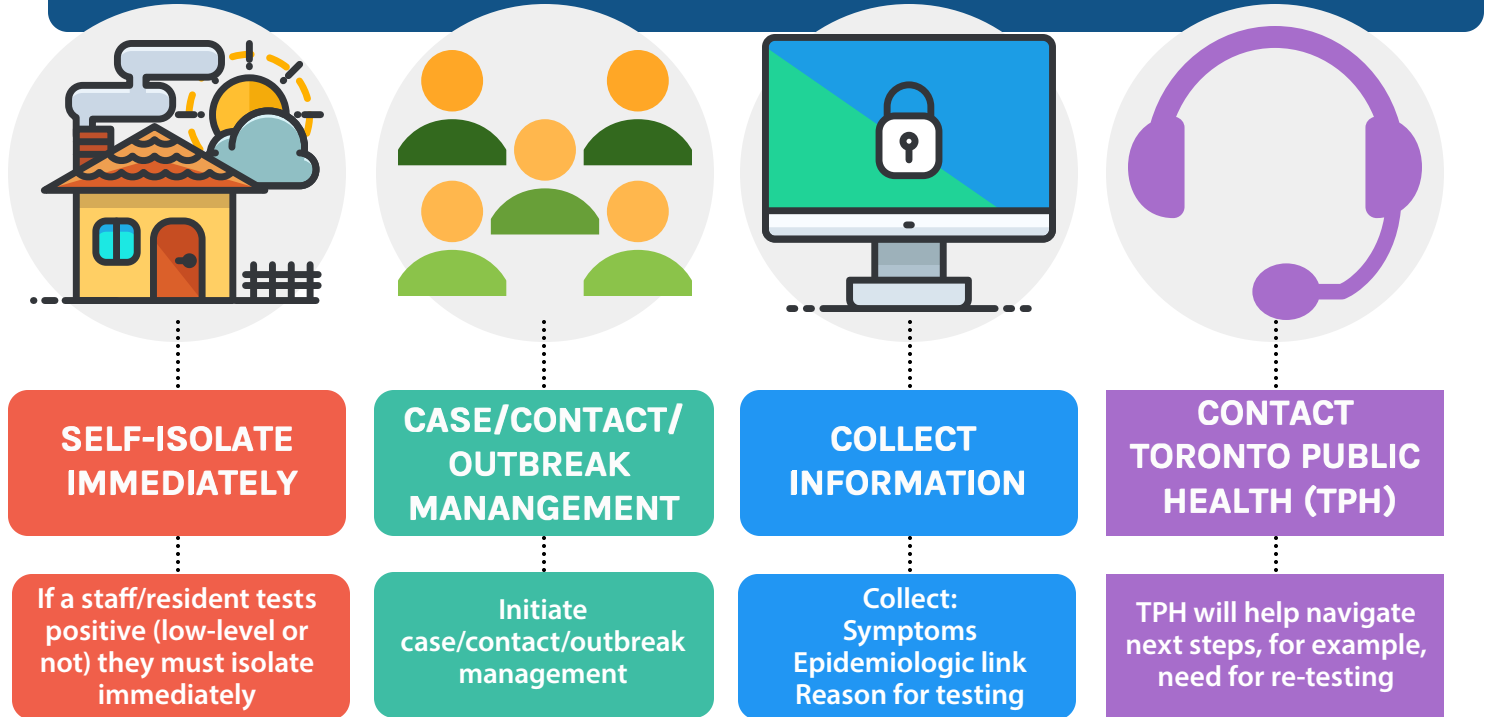


What to do with Low-Level Positive Results

WHAT SHOULD THE LONG TERM CARE HOME/RETIREMENT HOME DO?



All positive results need to be treated as infectious. Positive results and low-level positive results are different.

If a staff/resident receives a low-level positive result, speak with your assigned TPH Facility Liaison immediately and they will guide you on next steps.

WHAT WILL TORONTO PUBLIC HEALTH DO?



TPH WILL FOLLOW AN INTERNAL WORKFLOW TO DETERMINE NEXT STEPS.