

New Park on Glengarry Avenue

Design and Development

Virtual Public Meeting

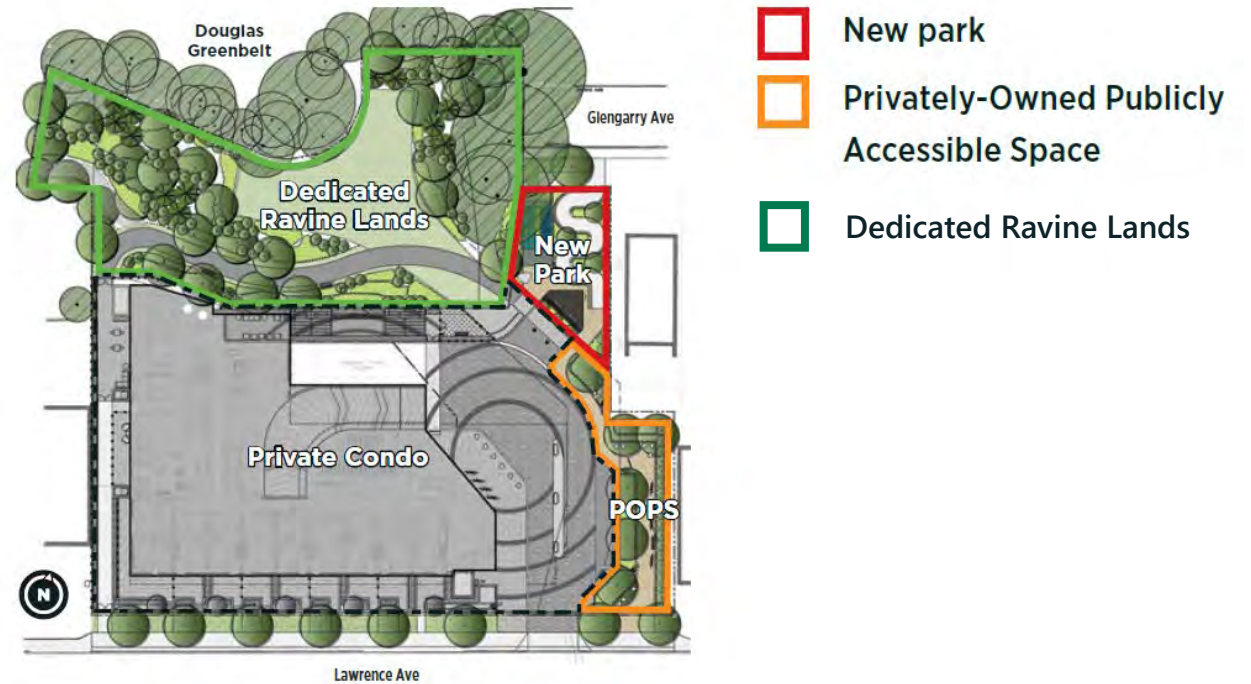
March 24, 2021



Objective of Tonight's Meeting

A new park is being designed on Glengarry Avenue, east of Avenue Road and directly adjacent to the Douglas Greenbelt!

Tonight we will present and gather feedback on the **early concept design for the new park** that was informed by previous community and stakeholder feedback.



An aerial overview of the surrounding community and the location of the new park on Glengarry Avenue.



Land Acknowledgement

I'd like to begin by honouring the land that I'm on. If you are not currently in Toronto, I encourage you to learn about the lands you're on.

We acknowledge the land we are meeting on is the traditional territory of many nations including the Mississaugas of the Credit, the Anishnabeg, the Chippewa, the Haudenosaunee and the Wendat peoples and is now home to many diverse First Nations, Inuit and Métis peoples. We also acknowledge that Toronto is covered by Treaty 13 with the Mississaugas of the Credit.



Agenda



Welcome, Opening Remarks and Team Introductions



Community Engagement



Park Project Overview



Concept Design



Design Feedback and Discussion

thank
you!

Next Steps + Adjourn



Project Team

CITY OF TORONTO

Parks, Forestry and Recreation

Jessica Chan

PFR Parks Development
Senior Project Coordinator

Rajesh Sankat

PFR Capital Projects
Senior Public Consultation
Coordinator

Vivian Goulas

PFR Capital Projects
Support Assistant

Lisa Ryan

General Supervisor, Parks

Gianluca M Di Cintio

General Supervisor, Parks



DESIGN TEAM

Strybos Barron King (SBK)

Bryn Barron

Principal Landscape Architect

Sydney Martel

Landscape Architect

DEVELOPER

Graywood Group

Neil Pattison

SVP Development

Christine Chea

Manager, Development



Opening Remarks

Councillor Mike Colle

City of Toronto, Ward 8
Eglinton-Lawrence



Community Engagement

Consultation + Communications Update

Rajesh Sankat, City of Toronto

Anticipated Project Timeline



WE ARE HERE

MARCH 2021

PHASE 1: EARLY
CONCEPT DESIGN &
CONSULTATION

- Virtual Community Meeting on March 25, 2021
- **Online Survey to collect extended design feedback open from March 24th to April 11th**

APRIL/MAY 2021

PHASE 2: REFINED
CONCEPT DESIGN &
CONSULTATION

- Refined concept designs will be posted later this spring!
- A **second online survey** will be available to collect additional feedback from community members

FALL 2021

CONSTRUCTION
DRAWING
PREPARATION

SPRING 2023

CONSTRUCTION OF
NEW PARK BEGINS

- New park construction anticipated to coincide with new development at 250 Lawrence Avenue West



Community Outreach



The City of Toronto invites you to learn more about the new park being designed Glengarry Avenue, east of Avenue Road and directly adjacent to the Douglas Greenbelt.

Early concept design options have been developed for this new park, and staff are hosting a virtual public meeting to:

- Provide a project update
- Present the concept design options
- Share community perspectives

Meeting details

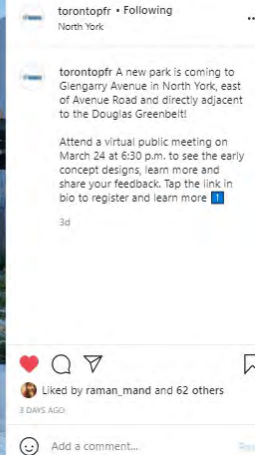


Wednesday, March 24, 2021
6:30 to 8:00 p.m.

This meeting will be accessible online.



To register for the meeting, visit toronto.ca/glengarrypark or scan the QR code. Join the online meeting so you are ready on time.



Community mail outs and social media posts advertising tonight's Virtual Public Meeting and Online Survey.



February and March 2021

- Project webpage at toronto.ca/GlengarryPark
- Community postcards and digital eFlyers sent out to current and future residents, community groups and Councillor's Office notifying them of the upcoming virtual public meeting and online survey

March 24th, 2021

Virtual Public Information Meeting hosted by PFR



March 24th to April 11th

Online Survey for input on proposed concept design

April 2021

Meeting and Survey summary posted on project webpage

April to May 2021

Final designs posted on project webpage + Second online survey for additional feedback!

Park Project Overview

Context and Masterplan

Jessica Chan, City of Toronto PFR

How will this park be delivered?

What are developer-delivered parks?



A developer-delivered park is a commitment by the developer to jointly/mutually design and construct their parkland dedication with City of Toronto Parks, Forestry and Recreation Division to coincide with the build out of their development.

Parkland dedications are obtained through development applications, which are built to coincide/in time with the build out of the development

How are developer-delivered parks funded?



Developer-delivered parks are funded through the Parks & Recreation component of the Development Development Charges, funding through a Section 37 agreement, through donations, partnerships, or a combination of the above

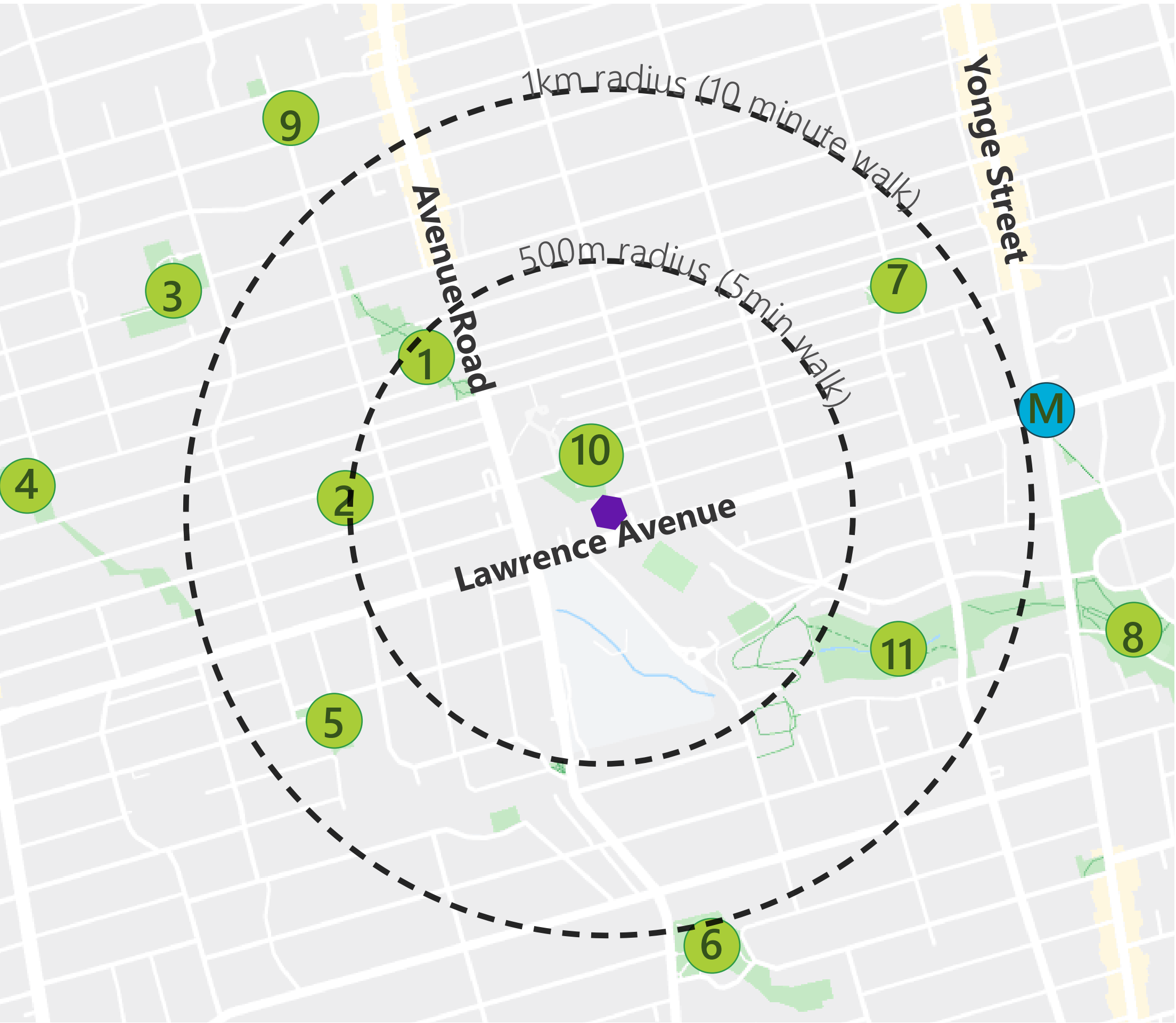
How are they maintained?



Developer-delivered parks are either maintained by the City's Parks Operations and Maintenance Branch, or by the land owner/condominium corporation. The new park on Glengarry Avenue will be maintained by the City's Parks Operations and Maintenance Branch.

Parks in Proximity

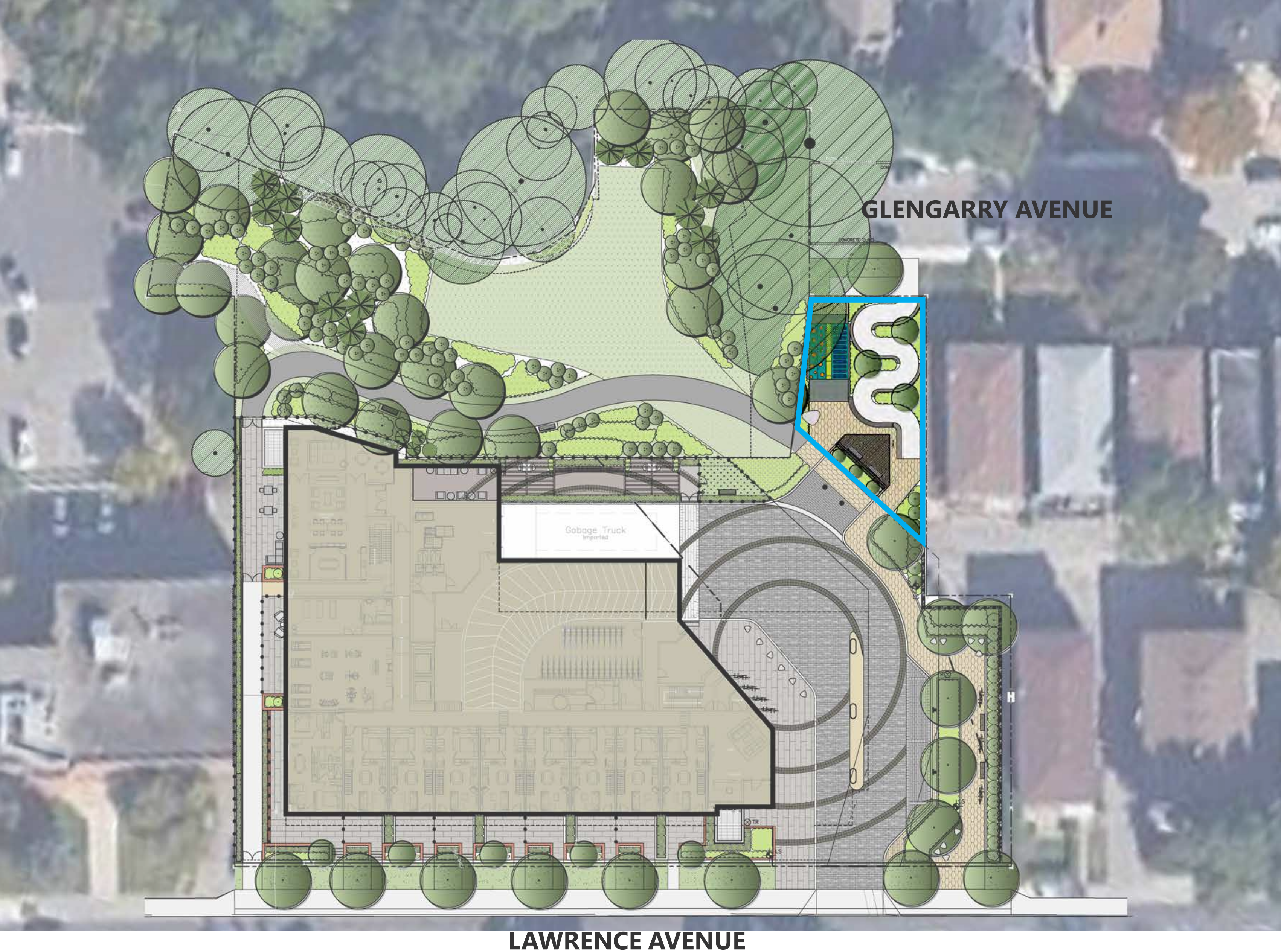
- 1 Brookdale Park
-Playground, horticultural display
- 2 Bedford Parkette
-Playground, horticultural display
- 3 Ledbury Park
-Outdoor rink, horticultural display
- 4 Woburn Park
-Dog Off Leash Area, outdoor basketball court, 2 playgrounds, horticultural display
- 5 Phil Givens Park
-Playground
- 6 Lytton Park
-2 Bowling Greens, 3 tennis courts, playground, horticultural display
- 7 Woburn Avenue Park
-Playground, wading pool, horticultural display
- 8 Lawrence Park Ravine
-2 bowling greens, 2 picnic shelters, 3 tennis courts, outdoor fitness, playground, horticultural display
- 9 Old Orchard Park
-Playground
- 10 Douglas Greenbelt
- 11 Chatsworth Ravine



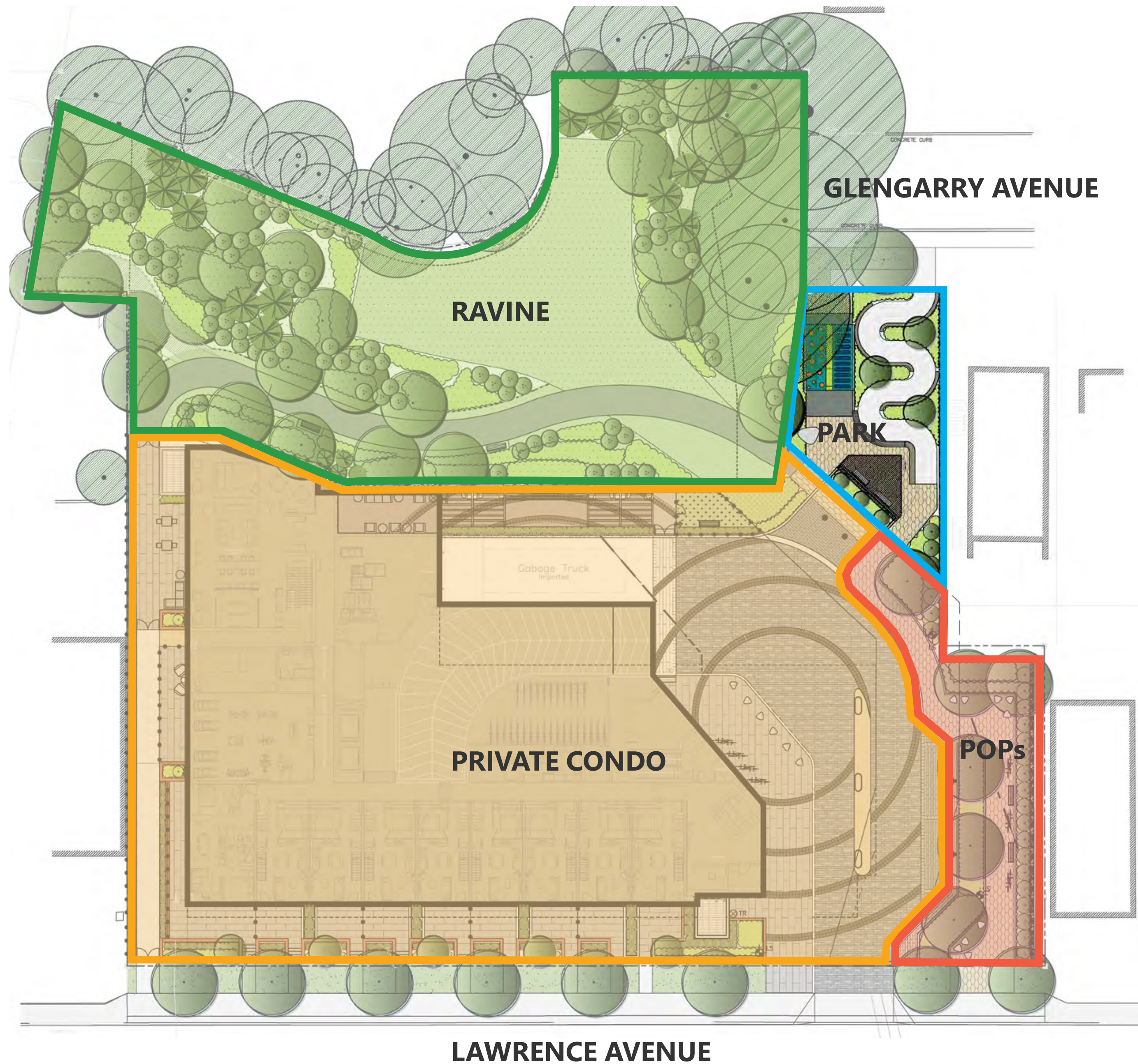
Legend:

- M TTC: Lawrence Station
- Park
- Park location

Approved Landscape Plan



Approved Public and Private Zones



Park Concept Design

Details + Themes

Bryn Barron, Principal Landscape Architect (SBK)

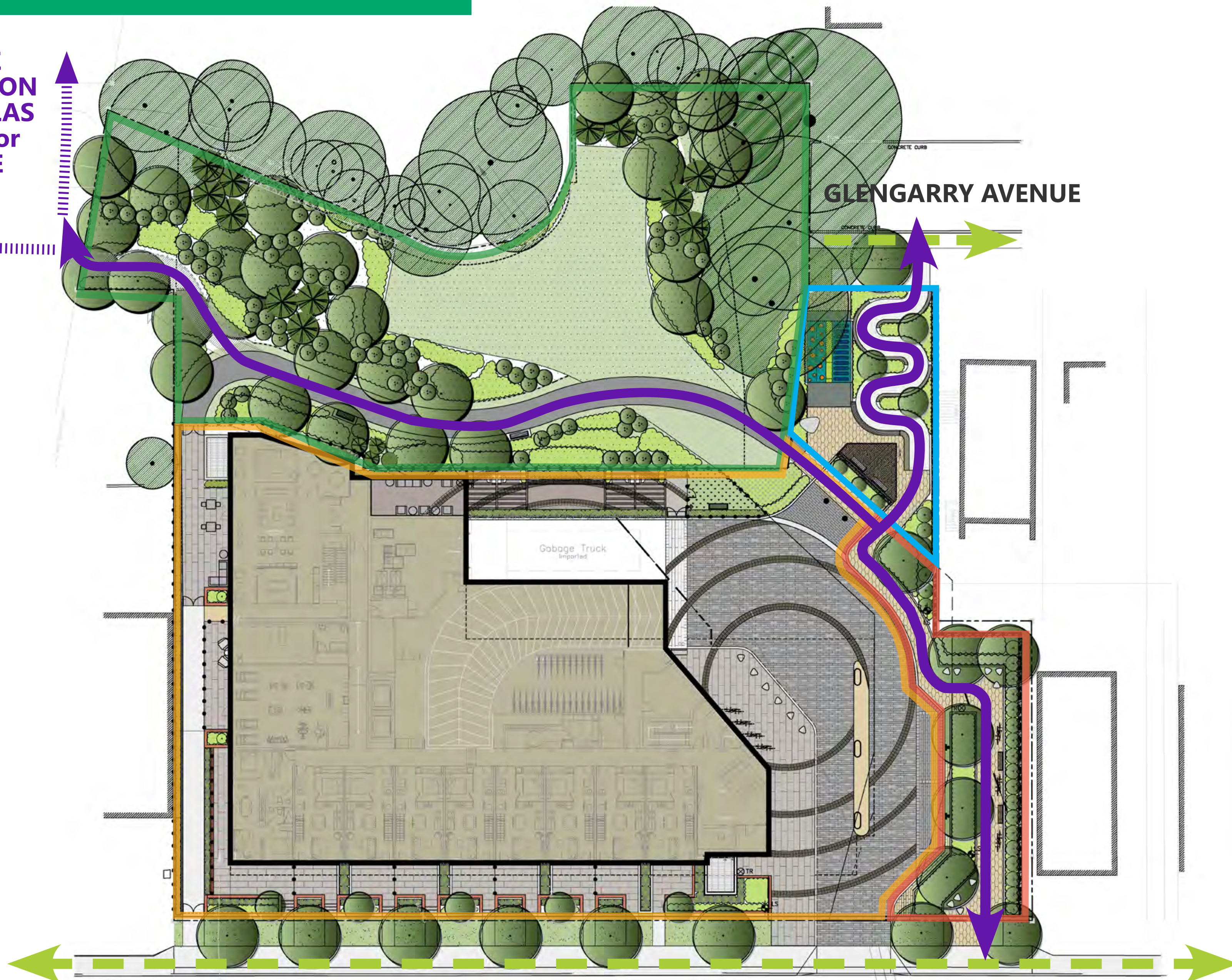
Pedestrian Circulation Plan

FUTURE
CONNECTION
TO DOUGLAS
AVENUE or
AVENUE
ROAD

GLENGARRY AVENUE

Garbage Truck
Impound

LAWRENCE AVENUE



Privately Owned Public Space (POPS)



BENCH



BIKE PARKING



CONCRETE SEATING



PAVING PATTERN



PLANTING



PLANTING



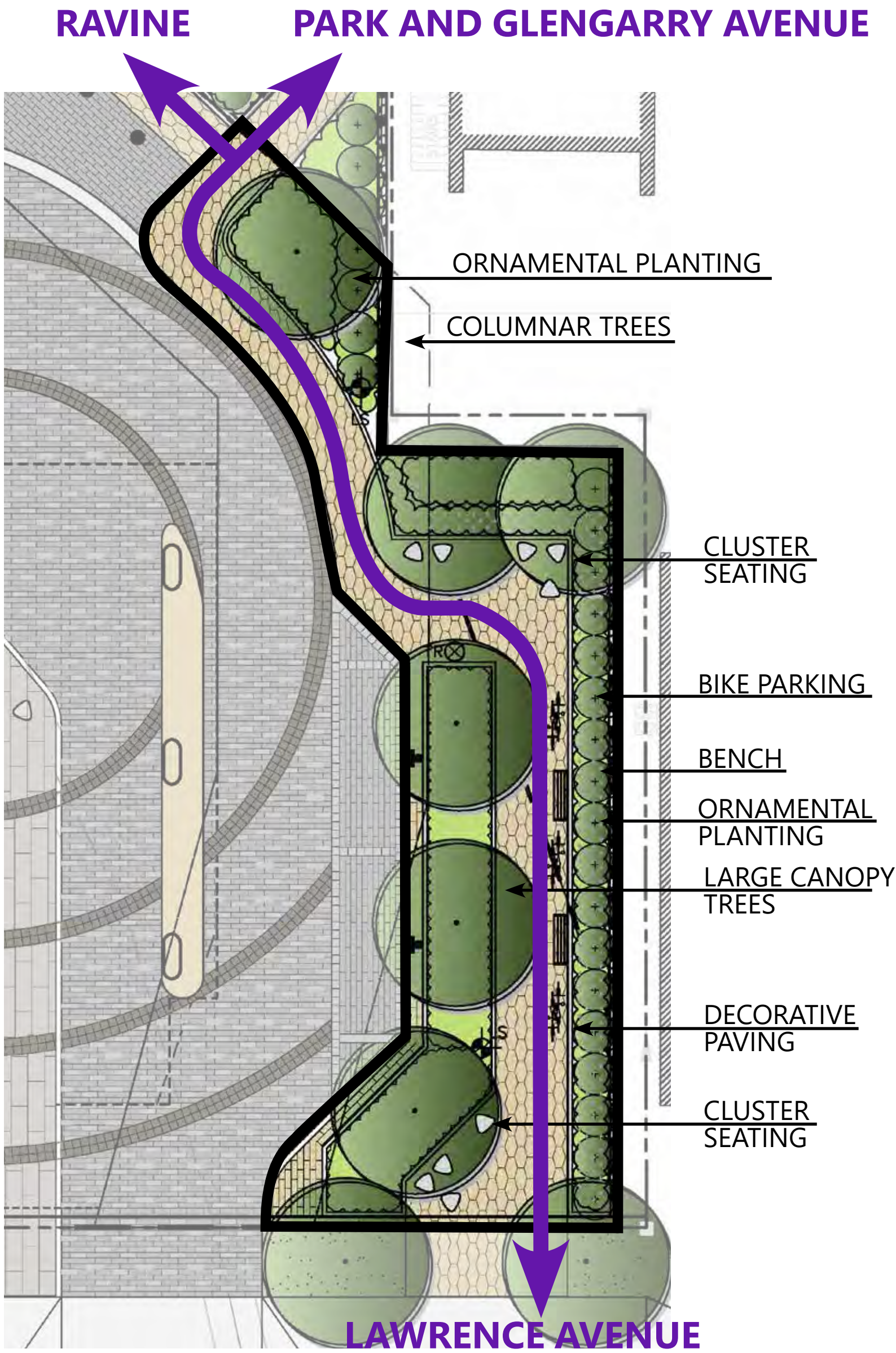
COLUMNAR TREES



VIEW FROM SOUTH



VIEW FROM WEST

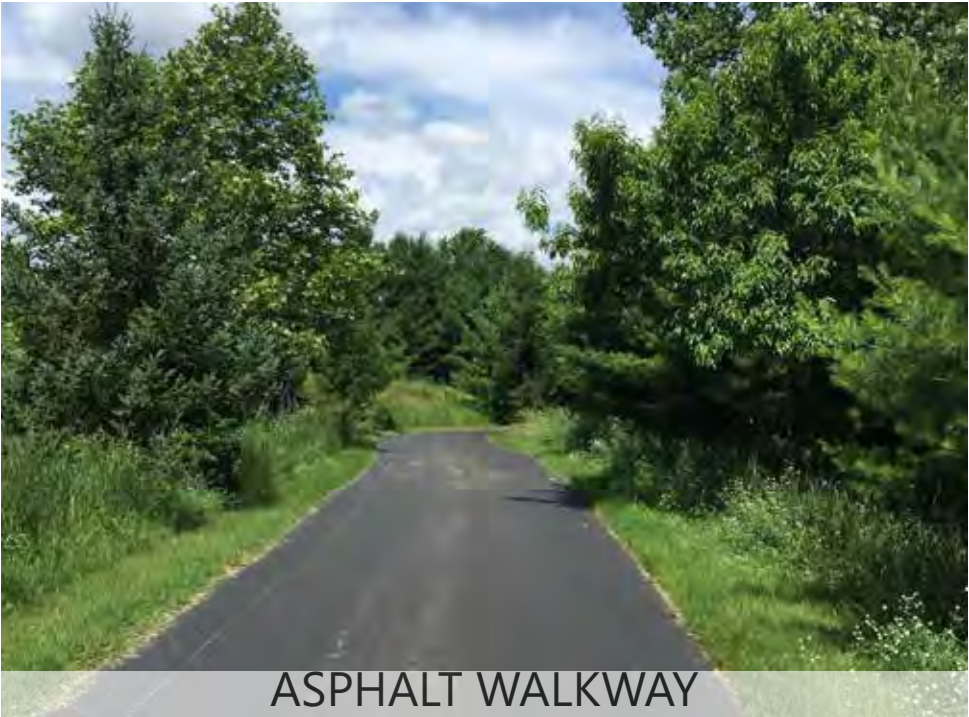


Images

Rendering

Approved Plan

Ravine



Images

FUTURE
CONNECTION
TO DOUGLAS
AVENUE or
AVENUE
ROAD



EXISTING TREES TO
BE PRESERVED

SEATING AREA
RESTORATION
PLANTING

SEATING AREA
ASPHALT WALKWAY

EMERGENCY
MAINTENANCE
ACCESS

PARK
GLENGARRY
AVENUE
LAWRENCE
AVENUE

Approved Plan

Park: Existing Conditions, Opportunities and Constraints

Existing Conditions & Constraints

- Steep slope
- Existing trees in ravine to be preserved
- Accessible walkway required

Opportunities

- Create new north-south pedestrian connection (Glengarry Avenue to Lawrence Avenue)
- Create connection to future ravine pathway network
- Create community gathering space and play area
- Use slope to create unique play experience



Existing Photos

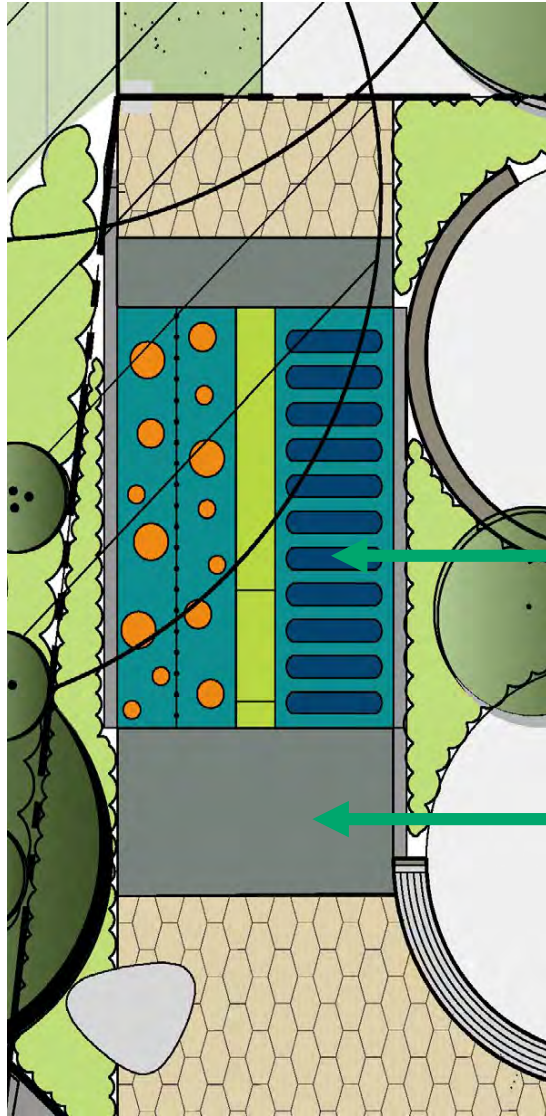
Renderings



Renderings

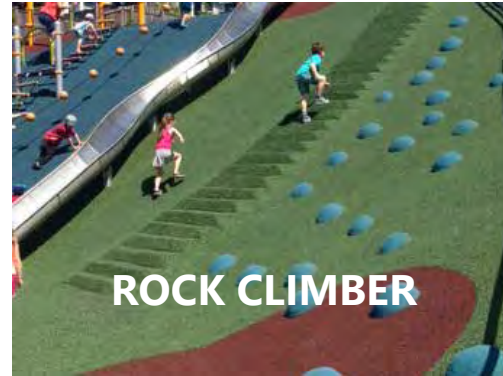


Children's Play Equipment



Play area

Safety surface



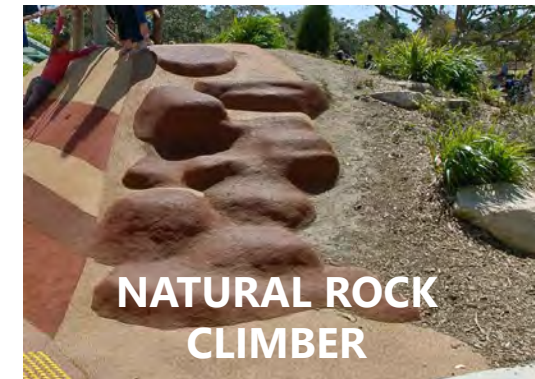
ROCK CLIMBER



ROPE CLIMBER



SLIDE/ROPE CLIMBER



NATURAL ROCK CLIMBER



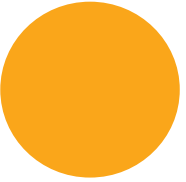
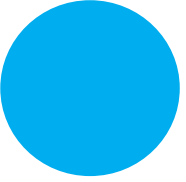




CLIMBER/OBSTACLE COURSE

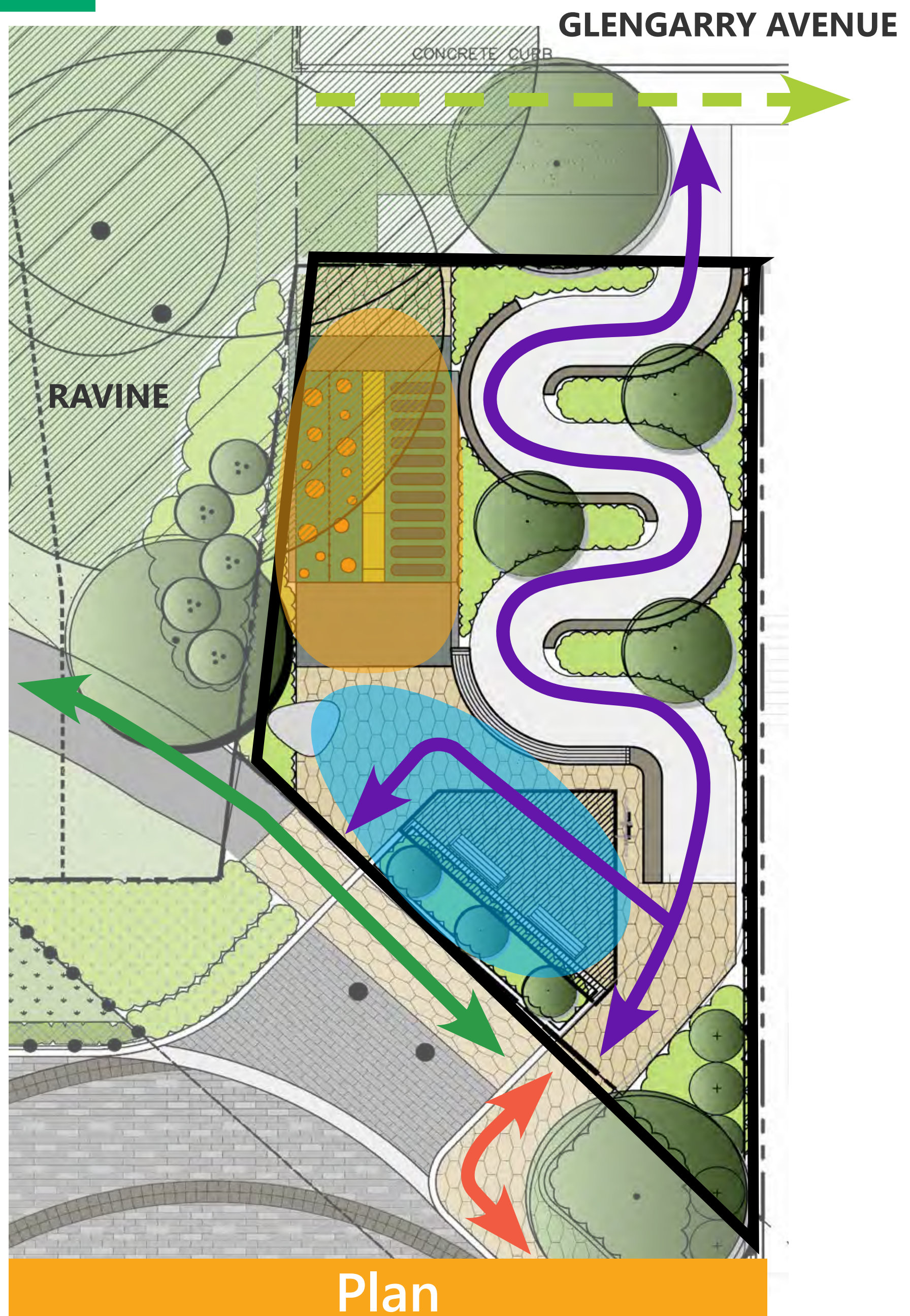


SLIDE/OBSTACLE COURSE

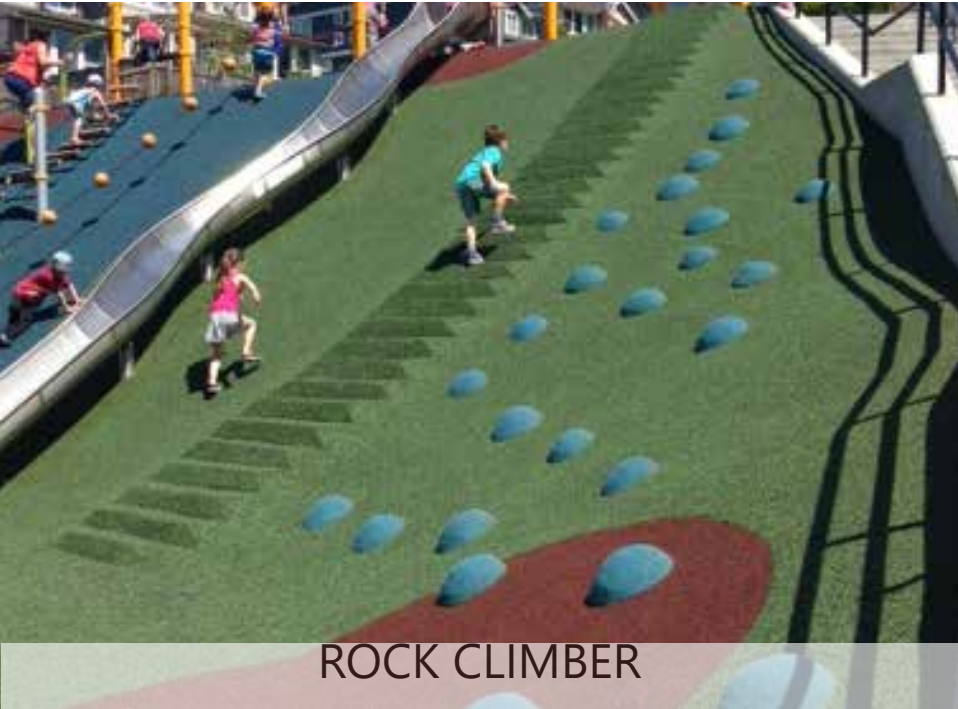
Functional Zone Diagram

Legend:

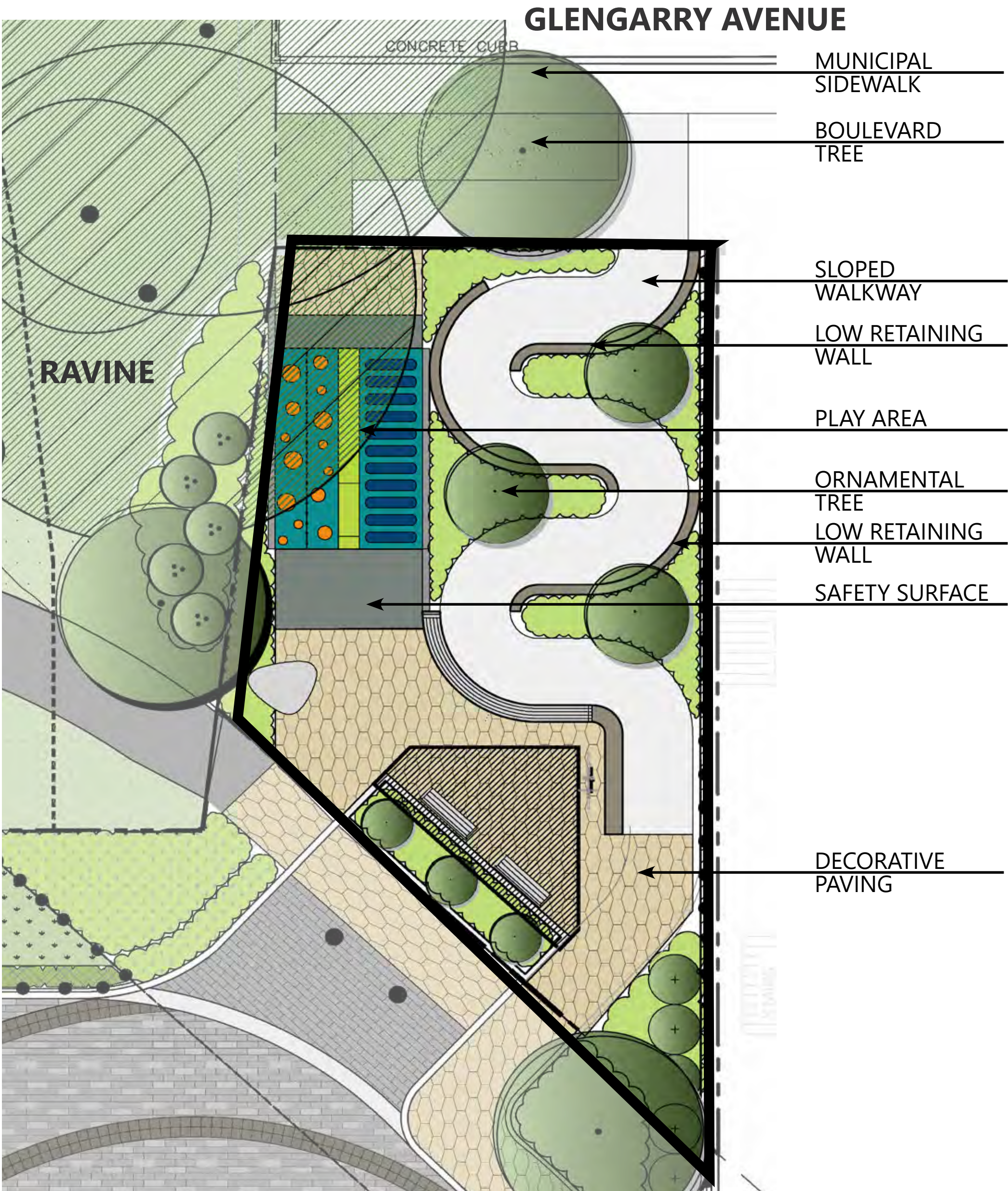
-  Play zone
-  Gathering space
-  Glengarry Avenue sidewalk
-  Internal walkway
-  POPs connection to Lawrence Avenue
-  Ravine connection/ future connection to Douglas Avenue or Avenue Road



Concept Plan- Play Components



Potential Play Components- Images



Concept Plan- Gathering Area



ORNAMENTAL TREE



PLANTING



SEATWALL



SHADE STRUCTURE OPTIONS

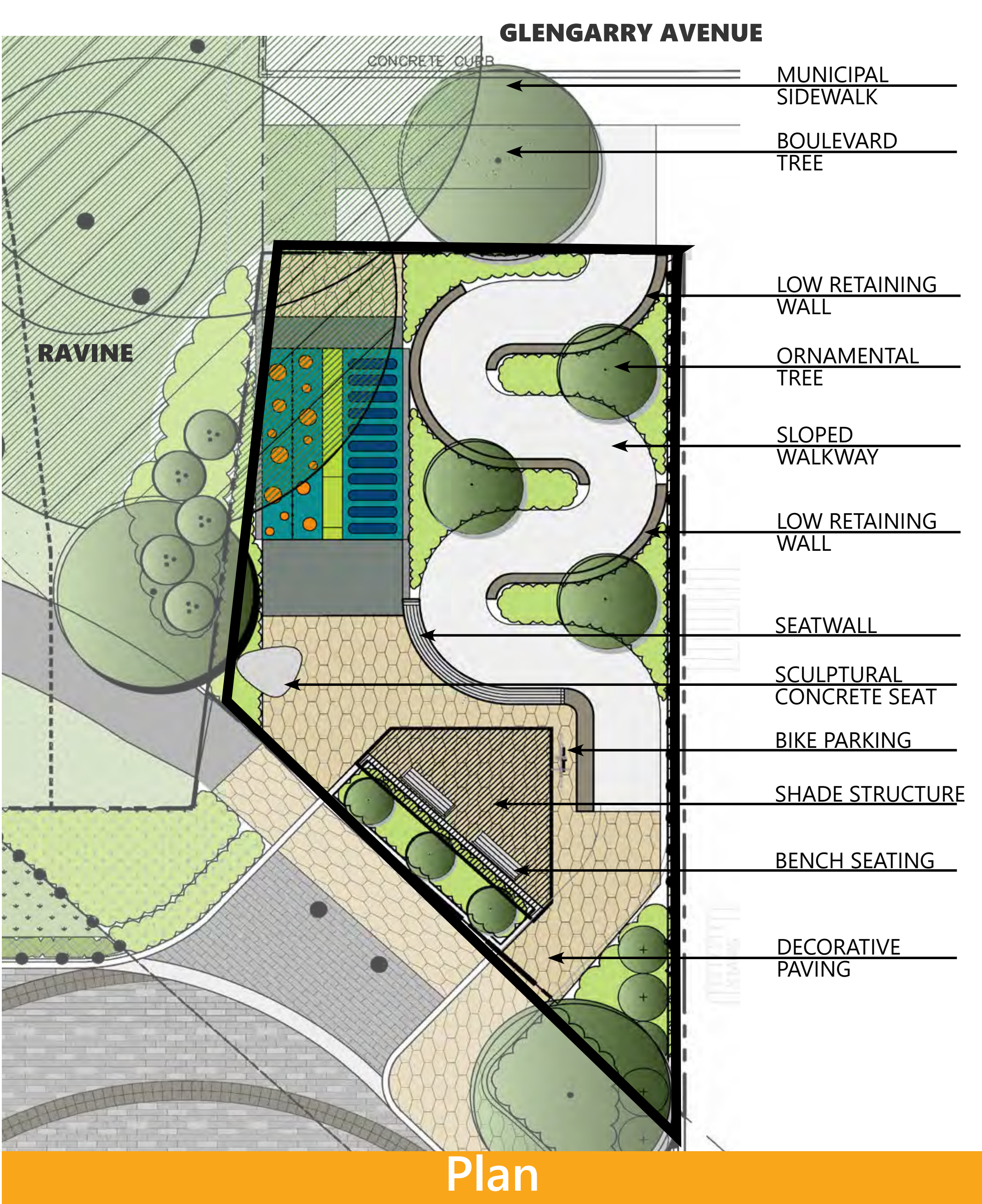


SCULPTURAL CONCRETE SEAT



BENCH

Potential Site Elements- Images



Plan

Renderings



VIEW A- View of play area and gathering space from south-west corner



VIEW B- Aerial perspective from south-east corner showing connection to ravine

Next Steps

Visit the project webpage at www.toronto.ca/GlengarryPark to:

- Share your feedback through the **online survey available now to Sunday, April 11th!**
- Sign up for **e-updates** to stay informed!
- Access **this presentation online**, and a consultation summary in April.
- See the **refined concept design** and take the second online survey later this spring!

Post-Meeting Feedback

For further comments, contact:

Rajesh Sankat, Senior Public Consultation Coordinator
PFR Capital Projects
rajesh.sankat@toronto.ca
416-726-5264

Jessica Chan, Senior Project Coordinator
PFR Capital Projects
jessica.chan@toronto.ca
416-392-2687

Thank you for spending your evening with us!

