

Dufferin Grove Park North-West Corner & Clubhouse Improvements

CRG Meeting
March 25, 2021

Land Acknowledgement

I'd like to begin by honouring the land that I'm on. If you are not currently in Toronto, I encourage you to learn about the lands you're on.

We acknowledge the land we are meeting on is the traditional territory of many nations including the Mississaugas of the Credit, the Anishnabeg, the Chippewa, the Haudenosaunee and the Wendat peoples and is now home to many diverse First Nations, Inuit and Métis peoples. We also acknowledge that Toronto is covered by Treaty 13 with the Mississaugas of the Credit.



Thank you for being here! 🎉

Agenda



Webex Tips, Meeting Purpose, Goals & Introductions



Project Updates

- Work Plan
- Construction Update and Timeline



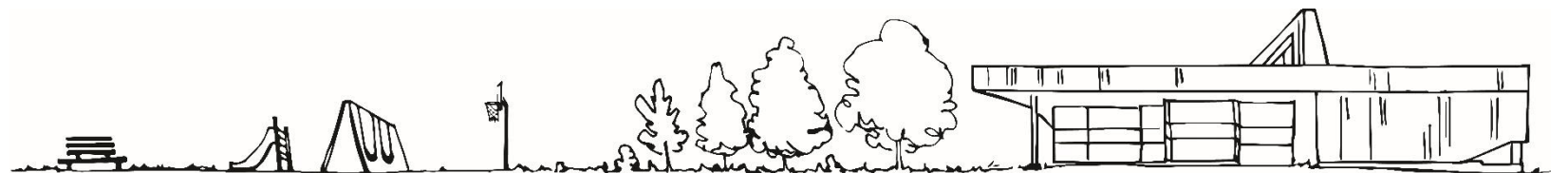
Questions of Clarification



Next Steps

**Thank
you!**

Adjourn by 8:00 p.m.



Meeting Participation



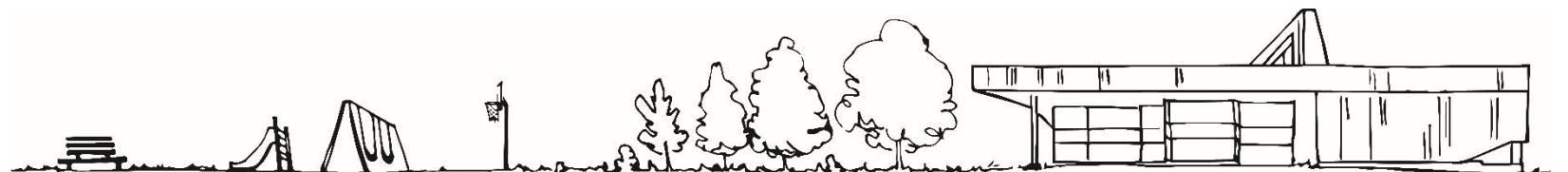
All participants are currently muted for the presentation.




All cameras have been turned off for this meeting.

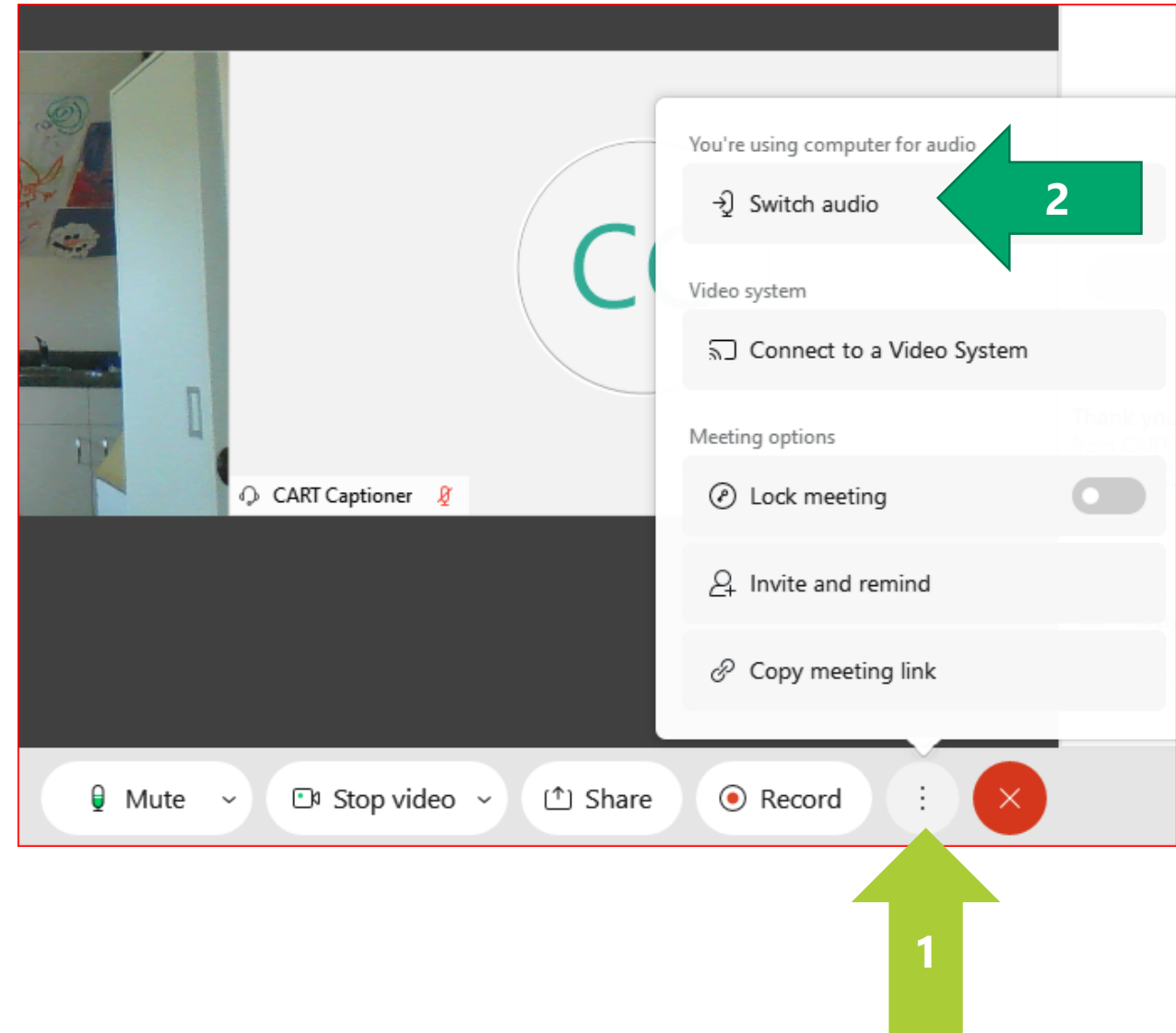


You will be given an opportunity to ask panelists questions directly during the Q&A, through both the chat and audio features.



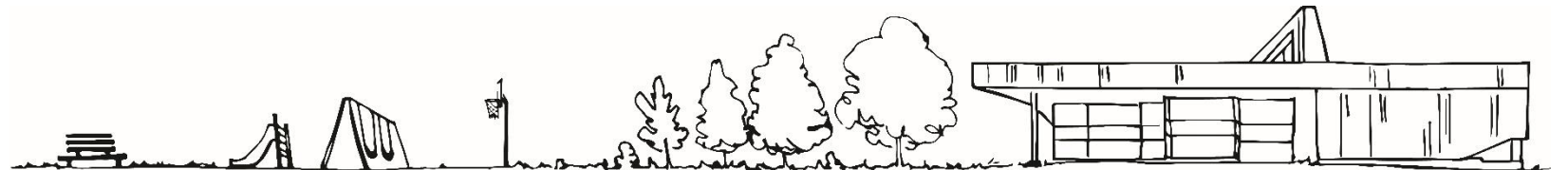
Webex Audio Trouble?

1. Click the **More Options** button at the bottom of the screen 
2. Click **Switch Audio**
3. Use the **Call me at** function
 - a) Enter your phone number
 - b) Webex will call your phone (no long distance charges)



Meeting Goals

- Provide an overview of the updated construction process and timeline
- Answer questions of clarification



Project Team

City of
Toronto

Parks,
Forestry and
Recreation

Krista Carroll – Sr. Project Coordinator

Katy Aminian – Supervisor, Capital Projects

Peter Didiano – Program Manager, Capital Projects

Peter White - Manager Parks, Community & Social Services

Cheryl MacDonald - Manager, Community Recreation

Sofia Oliveira - Community Recreation Programmer

Donna Densmore – Supervisor Community Recreation

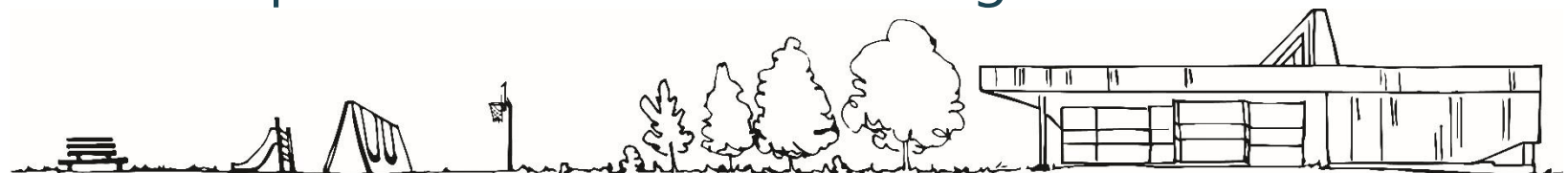
Kelly McInnes - General Supervisor Parks Operations

Alex Lavasidis – Sr. Consultation Coordinator

DTAH

Megan Torza – Architect

Victoria Bell – Landscape Architect & Urban Designer



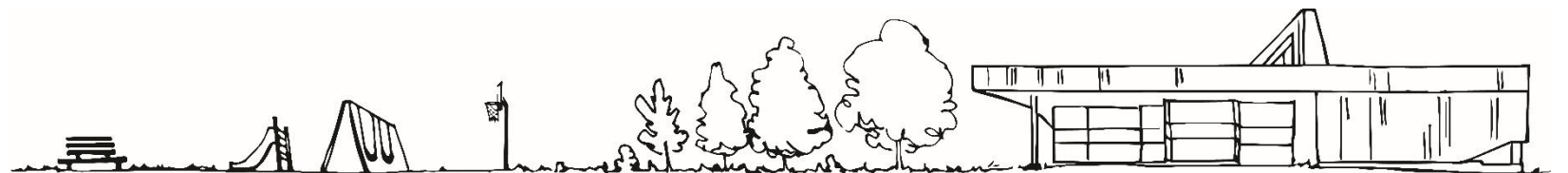
CRG Members

Registered

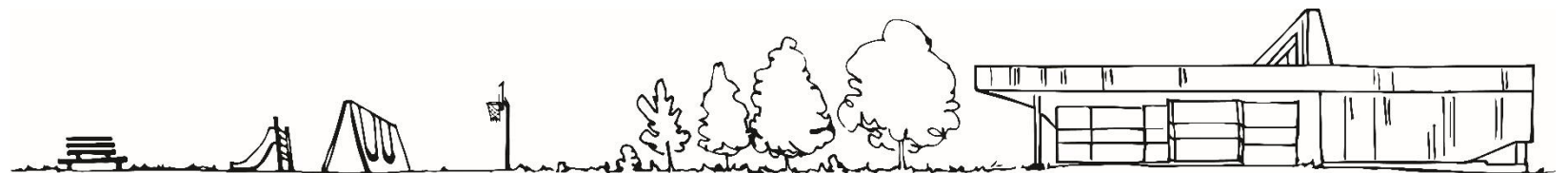
Andrea Holtslander
Anne Freeman
Chang Liu
Daniel Halpert
Ellen Manney
Erella Ganon
Erin George
Irena Hrzina
Jim McInnes
Migs Bartula
Shane Morgan
Skylar Hill-Jackson
Tamara Romanchuk
Yves Bonnardeaux

Regrets

Benjamin Hoff
Colin Prince
Robin Crombie

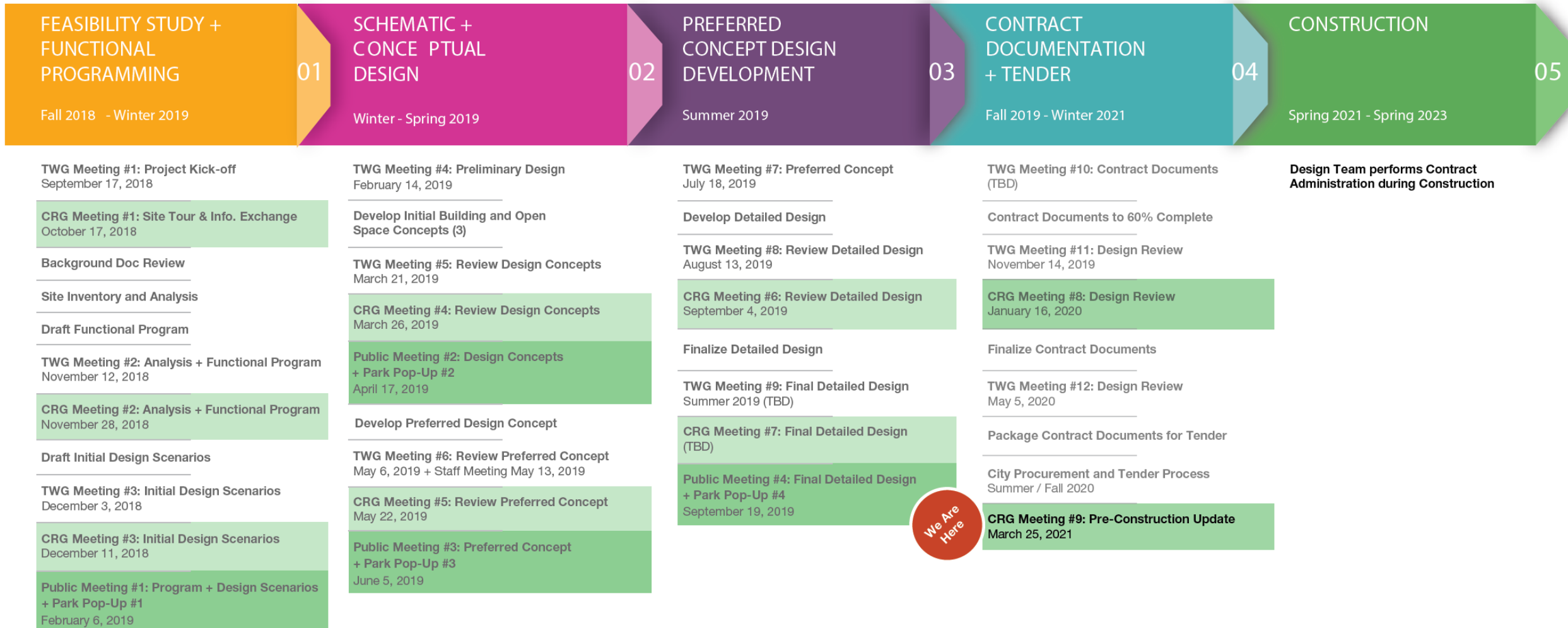


Deputy Mayor Bailão Davenport



Project Updates

Community Engagement Work Plan



TWG: Technical Working Group
CRG: Community Resource Group

Timeline

Original
Construction
Start Date
Late 2020

New
Construction
Start Date
March 28, 2021

New Rinks Open
2022-2023
Skating Season

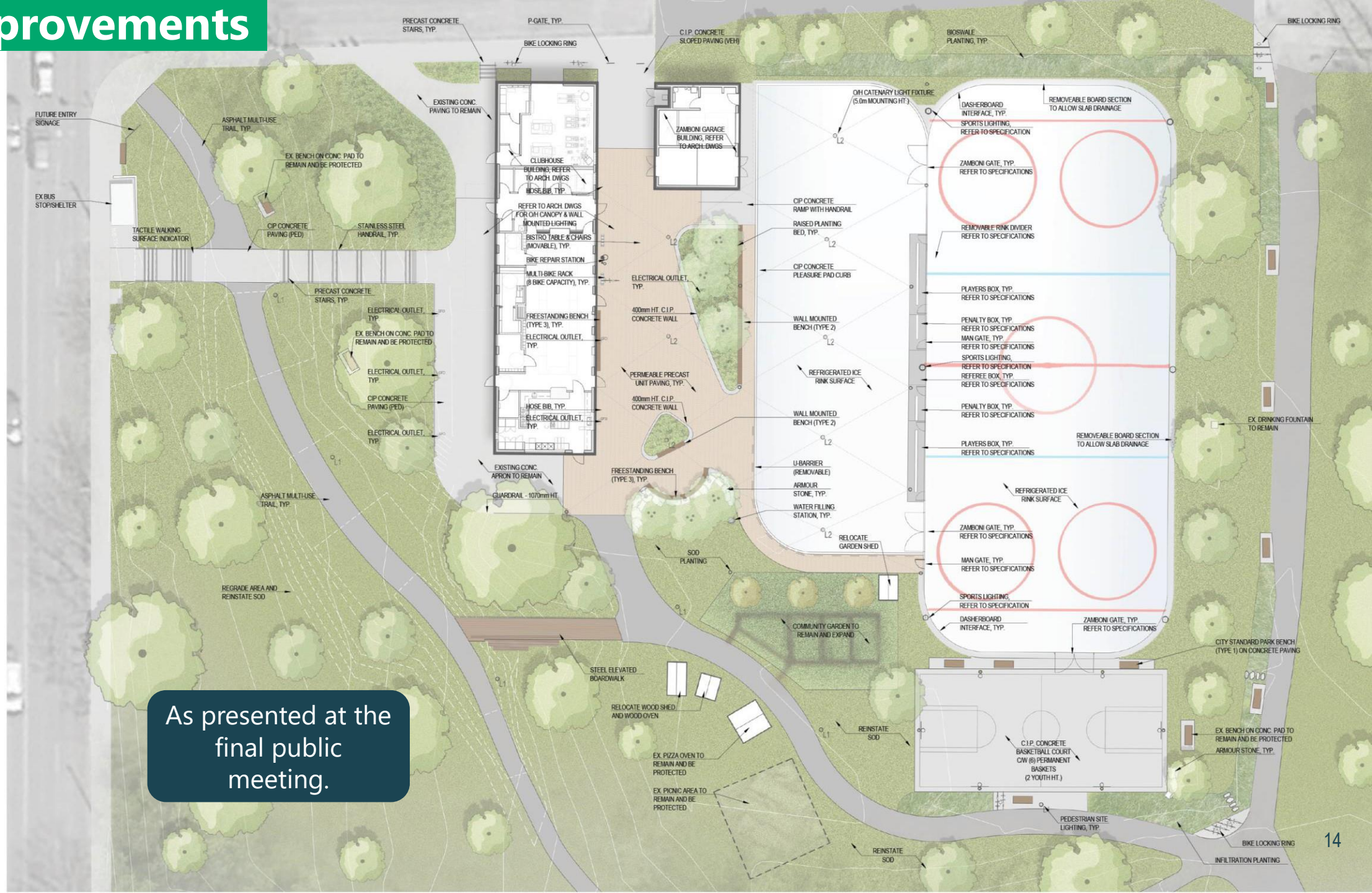
Construction Process (adjusted for delayed start)

The original construction schedule was delayed to allow the skating rinks to remain open for the 2020-2021 skating season.

Rinks Closed
for 1 Season
2021-2022
Skating Season

Construction
Complete & All
Improved Spaces
Open
February 2023

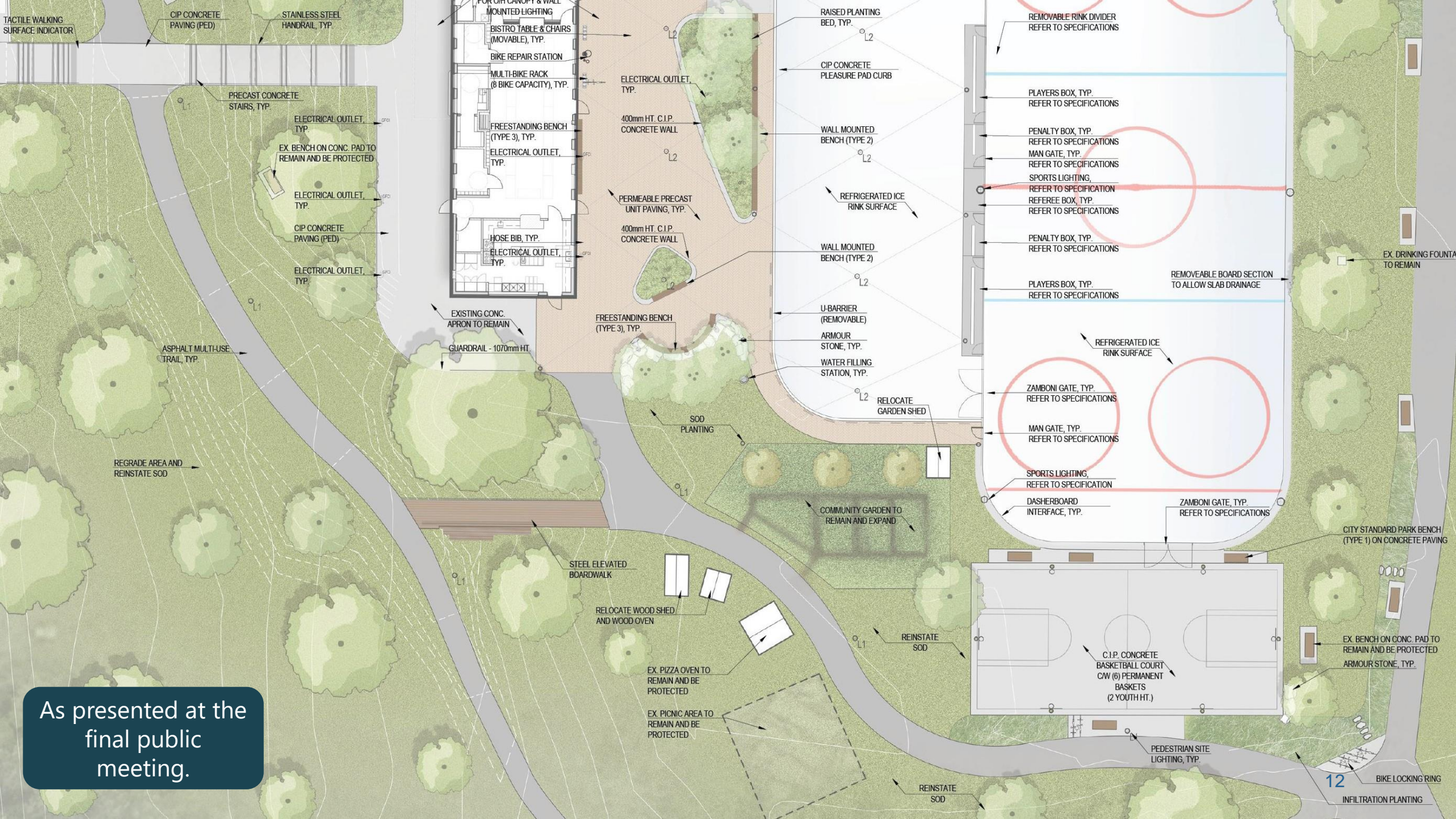
The Improvements



As presented at the final public meeting.

As presented at the
final public
meeting.





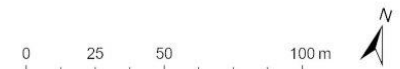
As presented at the final public meeting.

Construction Fencing

- During construction the Dufferin Grove Park Clubhouse, rinks, basketball court, gardens, and surrounding area will be fenced off for the entire construction period (Site A in the Hoarding Map).
- The north-west corner pathway, located west of the Clubhouse and East of Dufferin Street will be open through most of the construction period but closed for work as required (Site B in the Hoarding Map).
- The community will be given 2 weeks notice when Site B needs to be closed off for construction.



 Hoarding Area
 Dufferin Grove Park boundary



Programming

- **Ice Skating/Rinks** - The rink will be under construction for the 2021-2022 skating season. During this season, the city will work with the community to create a natural ice rink somewhere on the eastern half of Dufferin Grove Park where the playing fields are located. The new rink will be open for the following 2022-2023 skating season.
- **Farmers' Market** – Will continue to operate from St. Anne's Church as long as they are permitted. In the summer, the City will help accommodate the Market along the pathway to the east of the construction zone from Dufferin Street. The group understands that noise and dust may be an issue. The Farmers' Market will be able to return to the site fully upon completion of construction in February 2023.



- Hoarding Area
- Dufferin Grove Park boundary



Programming

- **Clay and Paper Theatre** – The puppets have been relocated.



- **Community Garden** – The existing community gardens north of the picnic area will be protected but inaccessible during construction. Parks Operations have provided temporary planter beds near the Fieldhouse. These beds have water access. Two sheds and a compost bin have also been temporarily relocated near these gardens, with the assistance of Parks Operations staff.

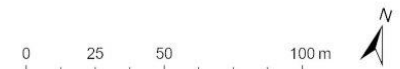


Programming

- **Bake Ovens:** Parks Operations are in the process of relocating the small bake oven so that it may be accessible to the public during construction. The small bake oven will be temporarily located near the Cob, at the south end of the park. While food programming is currently not happening due to COVID, this location has water access which will allow for oven use once permitted, based on COVID regulations.
- **Food Preparation** - No food preparation programs are currently running due to COVID. Staff will work with the community to identify if/what accommodations can be made for food preparation once allowed.
- **Washrooms:** Clubhouse washrooms will be closed during construction. Fieldhouse washrooms will be open year-round including in the spring/summer from 9 a.m. to 8 p.m. and in the fall/winter from 9 a.m. to dusk.



- Hoarding Area
- Dufferin Grove Park boundary



Programming

- **Skateboarding:** An alternative location has been confirmed at Wallace Emerson.
- **Bike Polo:** In the process of identifying an alternate area for play during construction.
- **Basketball:** The basketball court will be closed during construction. Basketball courts & nets under a 15 minute walk away include Bloor Collegiate, St. Helen Catholic School (1196 College St), Brock Public School (93 Margueretta St), Dewson Street Junior Public School (65 Concord Ave) and Central Toronto Academy (570 Shaw St)
- **Campfires:** Campfires are not currently permitted due to COVID regulations. The City will continue to follow COVID regulations and update the availability of campfire spaces as required.



-  Hoarding Area
-  Dufferin Grove Park boundary



Next Steps

- Short monthly construction updates will be provide to CRG members, project e-update subscribers, and will be posted to the project webpage:

toronto.ca/dufferingroveimprovements/

- Ongoing discussion with recreation about relocating impacted park activities.
- Construction information or feedback should be directed to 311 or DGConstruction@toronto.ca

Questions of Clarification

HOW TO PARTICIPATE: RAISE YOUR HAND OR USE THE CHAT

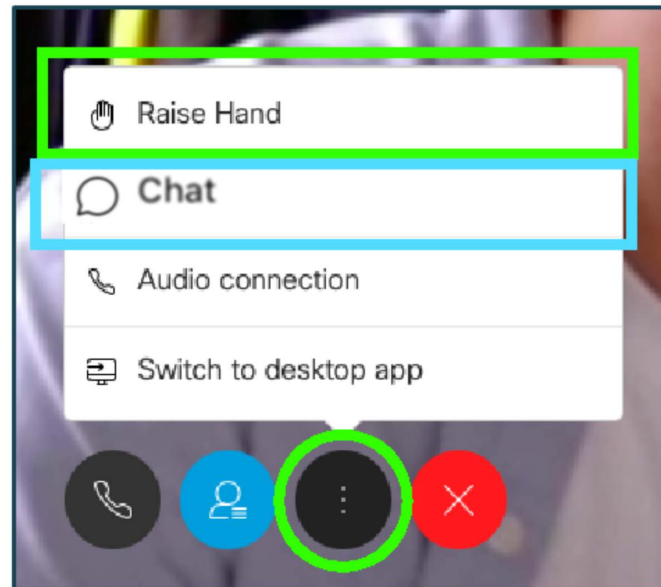
To ask a question and share feedback, you can virtually raise your hand.

IF YOU ARE
USING A
COMPUTER



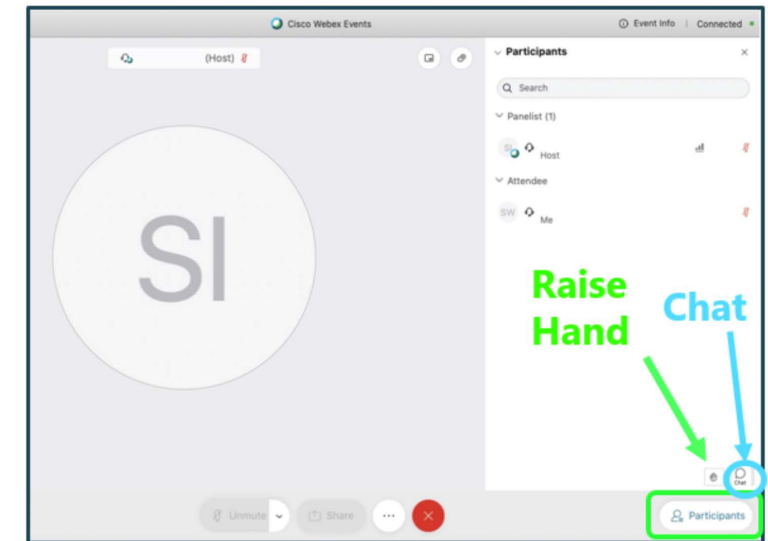
Via the internet browser

Click the "..." button at the bottom of the video window and select "Raise Hand" or "Chat".



Via the Webex App

Click the Participants button at the bottom of the video (the Participants panel will open to the right). Then click the "Raise Hand" or "Chat" button at the bottom right.



HOW TO PARTICIPATE: RAISE YOUR HAND OR USE THE CHAT

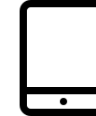
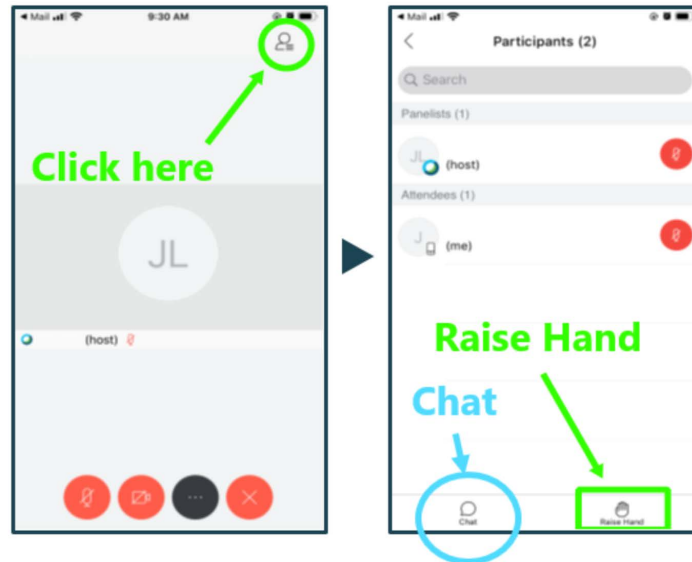
To ask a question and share feedback, you can virtually raise your hand or ask a question in the chat.

IF YOU ARE
USING A
SMARTPHONE
OR TABLET



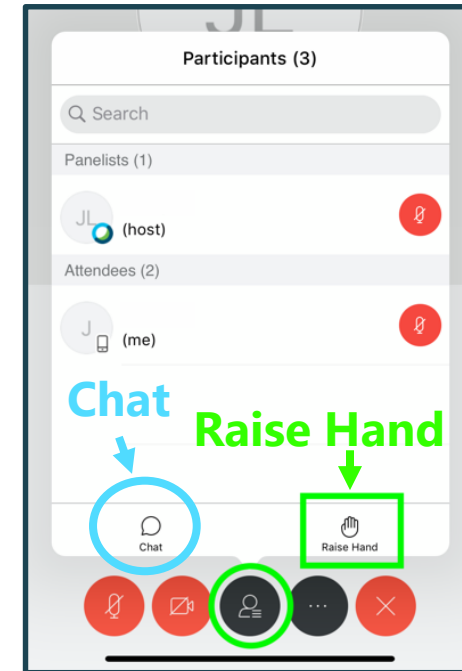
For smartphones

Click the Participants panel button at the top right corner of the screen. Then click "Raise Hand" or "Chat" at the bottom right of the screen.



For tablets

Click the Participants panel button at the bottom of the screen. Then click the "Raise Hand" or "Chat" button at the bottom right.



**Do you have
any questions
of clarification?**

Next Steps & Closing Remarks

- Short monthly construction updates will be provide to CRG members, project e-update subscribers, and will be posted to the project webpage:
toronto.ca/dufferingroveimprovements/
- Ongoing discussion with recreation about relocating impacted park activities.
- Construction information or feedback should be directed to 311 or DGConstruction@toronto.ca

Thank you!

