

# Digital Open House



**CREATE  
YOUR  
PLACE**  
Western North York  
Community Centre

 **TORONTO**

## **Welcome to our digital open house!**

The City of Toronto, Parks, Forestry & Recreation, and Children Services need your help as we continue to develop the new Western North York Community Centre.

This document will outline what we've heard to date, how your feedback has influenced the design of the new Western North York Community Centre, and provide additional opportunities for input.

In this phase, we will be refining the building. The images of the new community centre are concepts and will continue to be developed with your feedback.



# Overview of Past Events



## OPEN HOUSE #1: Carmine Stefano Community Centre

June 4th, 2019

Participation: 108



## POP-UP #1: St. Basil-the-Great College School

June 12th, 2019

Participation: 350



## POP-UP #2: Humbermede Community Fun Fair

July 13th, 2019

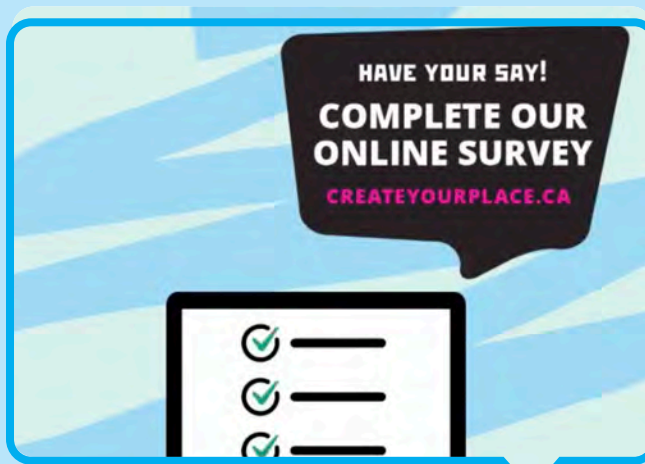
Participation: 50



## POP-UP #3: Movie in the Park

July 19th, 2019

Participation: 350



## SURVEY

May 28th through August 1st, 2019

Participation: 203 (Completed Surveys)



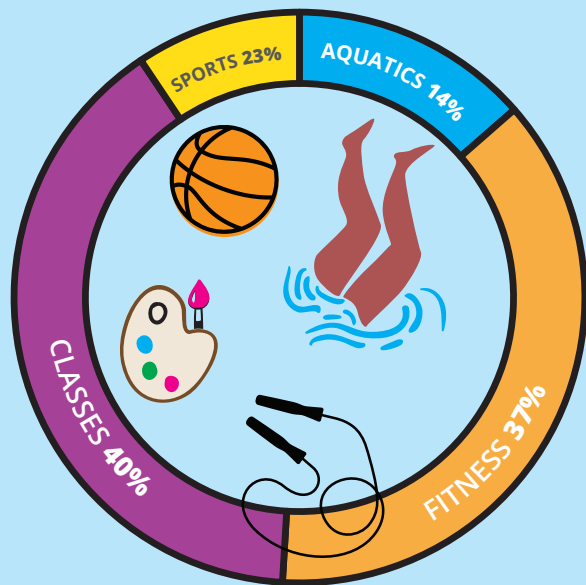
# Feedback

**'Top 5' reasons why people might visit a new community centre in Western North York.**

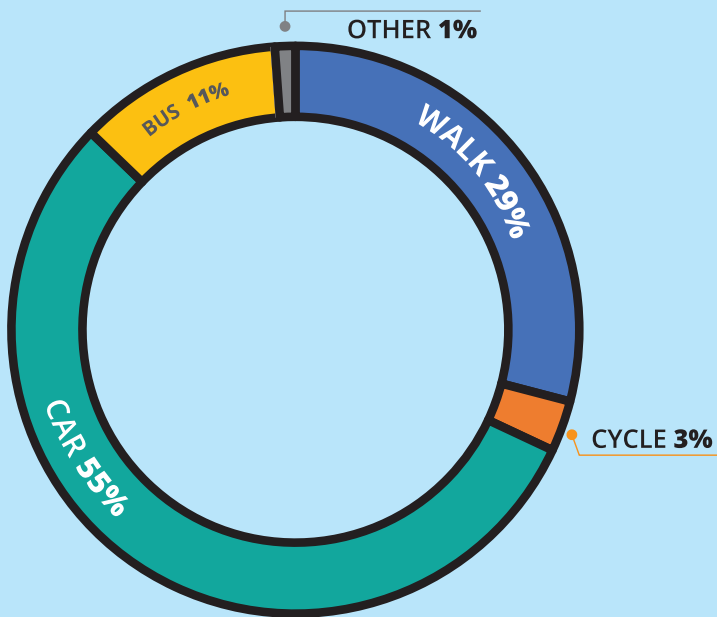


Program Interests

**Types of recreation programs community members want in the new centre.**



**Modes of Transportation to travel to the new community centre.**



Transportation Preference

## Recreation + Social Spaces

This centre needs to be more than recreational programming. It needs to be versatile and multi-functional. It needs to be a place for the community to gather.

## Diverse Community

This is a diverse community. Currently, the community lacks a place where everyone can come together. An inclusive facility will create opportunities for different groups to meet and interact.

## Driving Is Easiest

Most of the people we met lived within a 30 minute walk of the new site. Yet, 55% anticipated that they would drive to the facility. Creating better connections for travelling will encourage people to use alternative, and more active ways to move through the neighbourhood.



# Project Site

The site at 60 Starview Lane was purchased in 2015 by the City of Toronto, and is East of Weston Road, located next to the Toronto Catholic District School Board's St. Basil-the-Great College School.





# Project Goals

## 1. Connected Neighbourhood and People

This project is designed to create a civic hub where people come together to socialize, learn, work and play. It will create strong connections between neighbourhoods and the Humber River parkway system, delivering a walkable, vibrant and active community space.



## 2. Sustainable, Resilient and Healthy Facility

This project will prioritize sustainable design to create high quality indoor spaces that minimize energy usage and provide direct connections to outdoor park spaces.

The new community centre will demonstrate the City's goal of developing buildings that promote wellness and protect the environment.

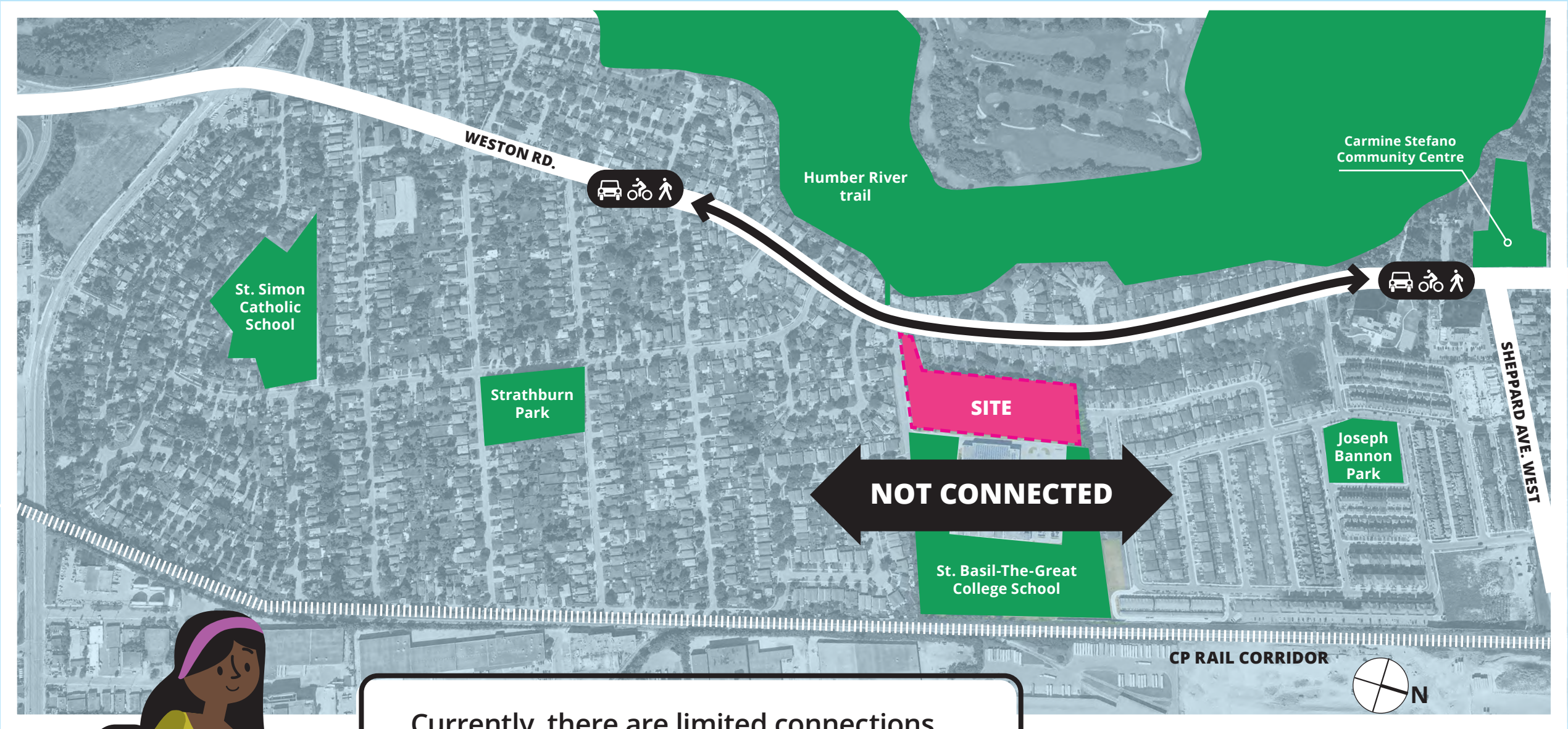


## 3. Inclusive Design

The new community and child care centre will create a warm and welcoming environment that is inclusive of all age groups, gender identities, cultural backgrounds and abilities. It will deliver durable, flexible and adaptable spaces to maximize its potential for programming and social enrichment. It will express a new and unique identity that is respectful of the existing character of the neighbourhood.



# Neighbourhood Access



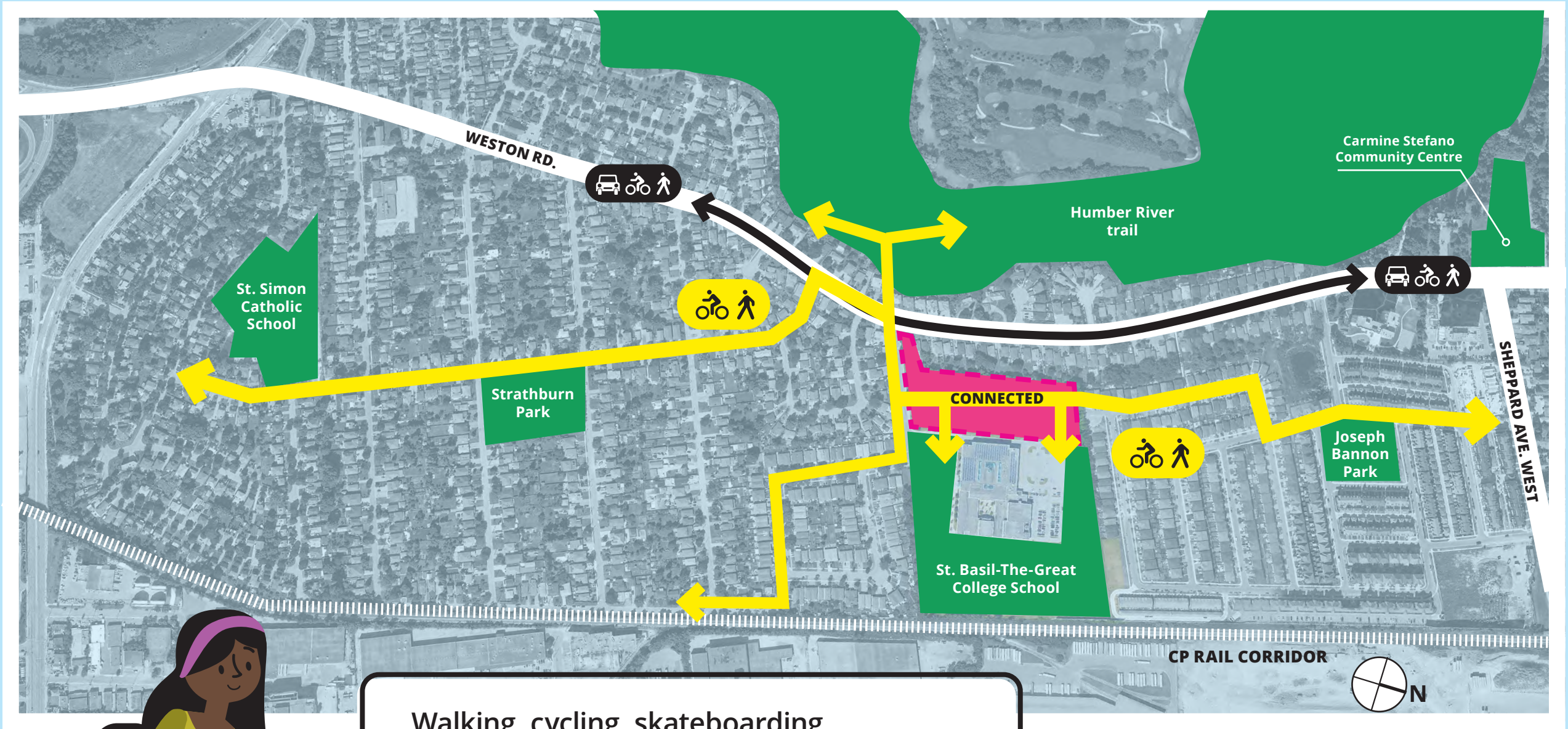
Currently, there are limited connections between the communities to the North and South.

The new community centre will establish these connections, safely linking neighbourhoods and residents with one another.





# Site as Connector



Walking, cycling, skateboarding, running, scootering, and strolling between the two halves of the neighbourhood, will now happen safely, without the need to cross busy roads or parking areas.





# Sustainable Development

**Urban canopy**  
Protect existing healthy trees.

**On-site stormwater control**  
Maximize drainage through the ground.

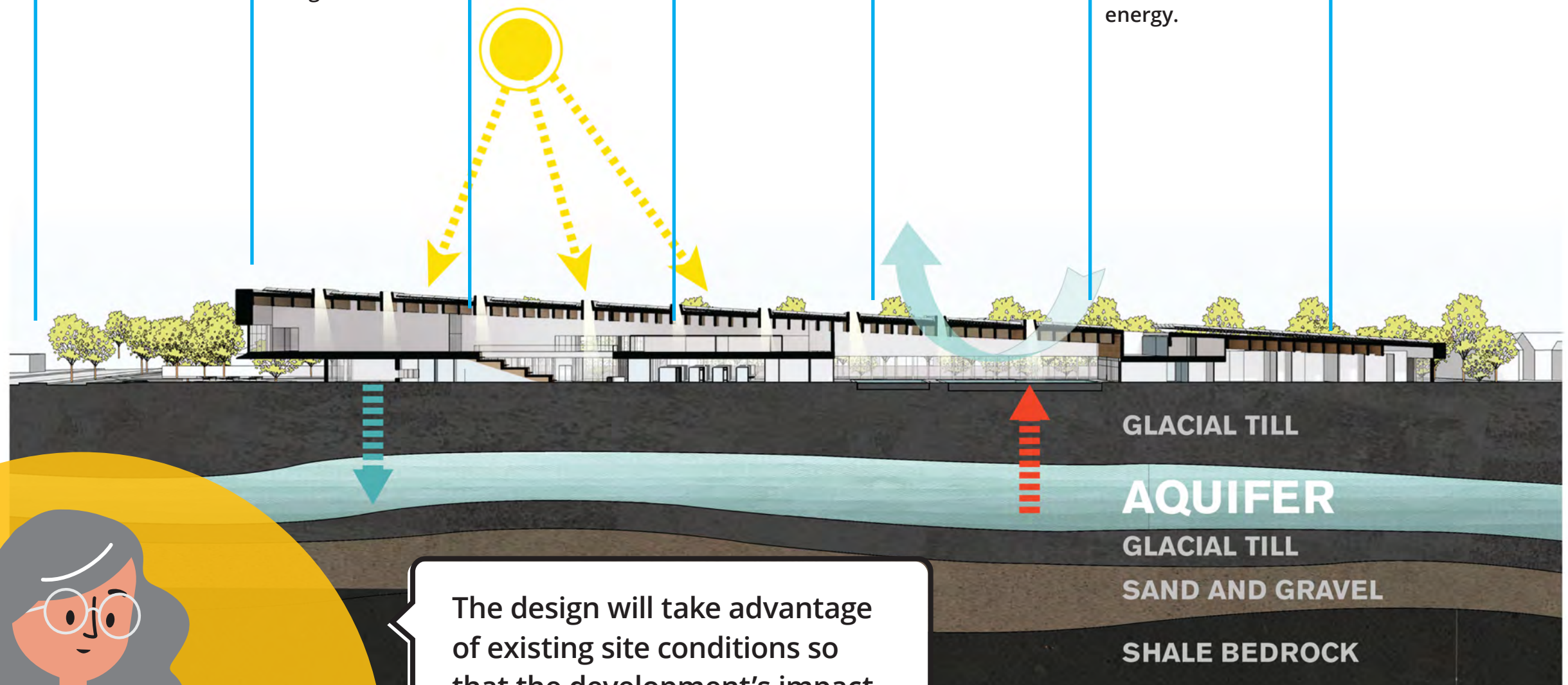
**Resilience**  
Back-up power system.

**Comfort**  
Optimize mechanical systems for comfort.

**Daylight**  
Natural light

**Net Zero Energy**  
Photovoltaic panels for onsite renewable energy.

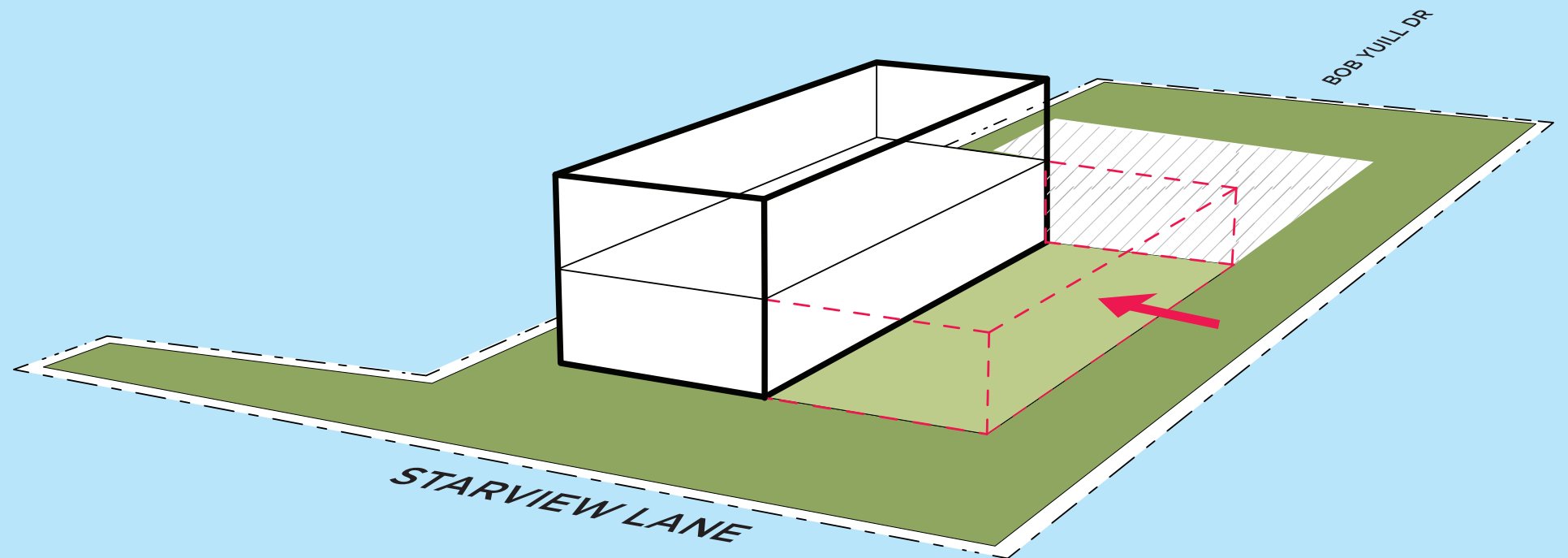
**Efficiency**  
High performing mechanical systems.



The design will take advantage of existing site conditions so that the development's impact on the environment will be minimized.

# Design Concepts

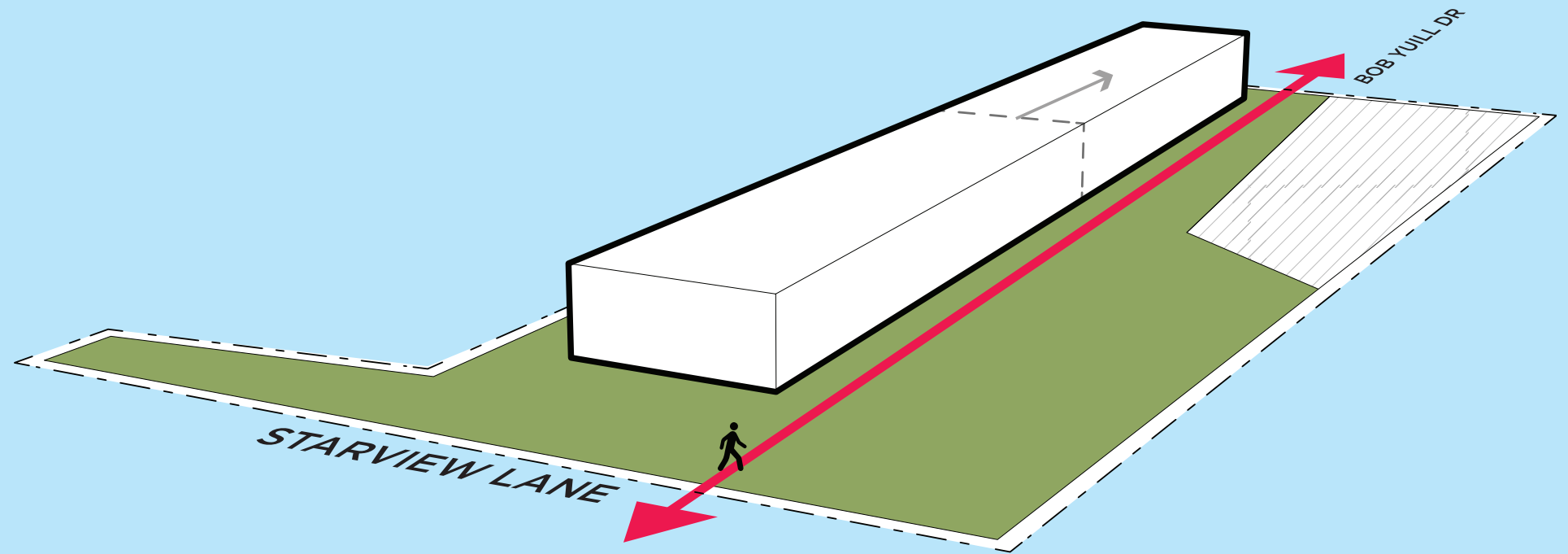
The design makes room for more park space by making the building two storeys.





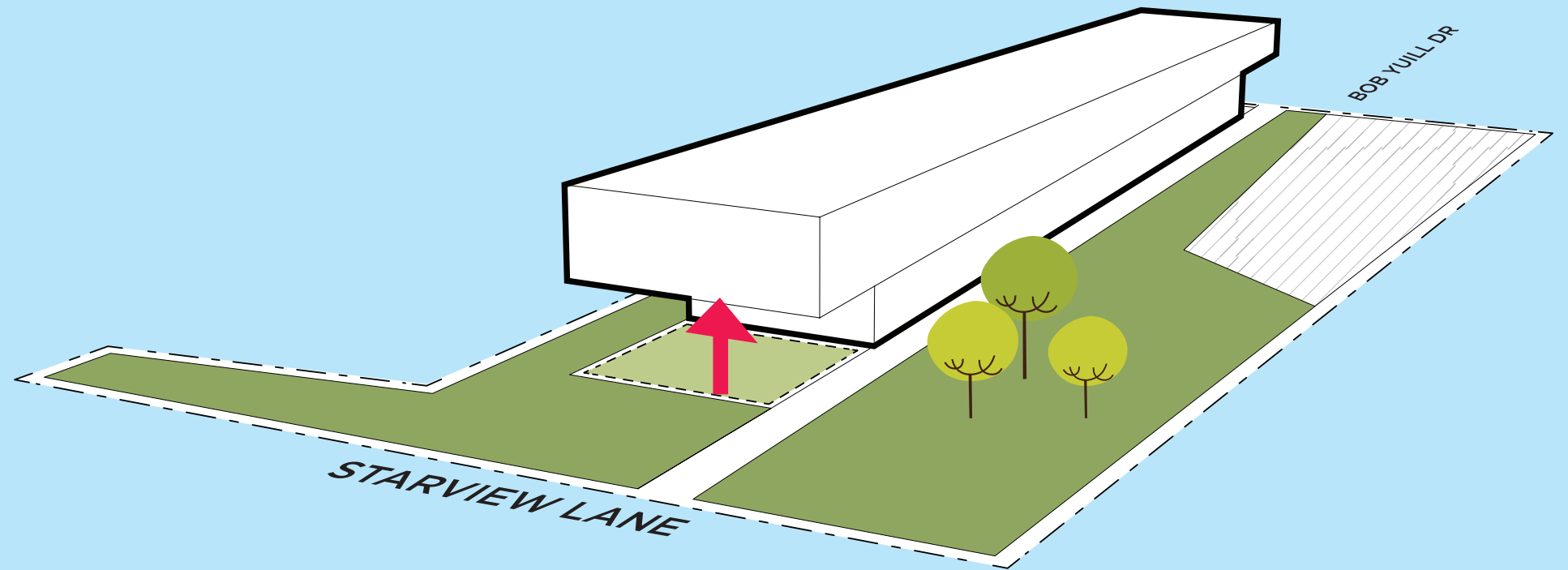
# Design Concepts

Stretching the building and the parking along the length of the site helps define a new north-south pedestrian route that will connect the neighbourhood.



# Design Concepts

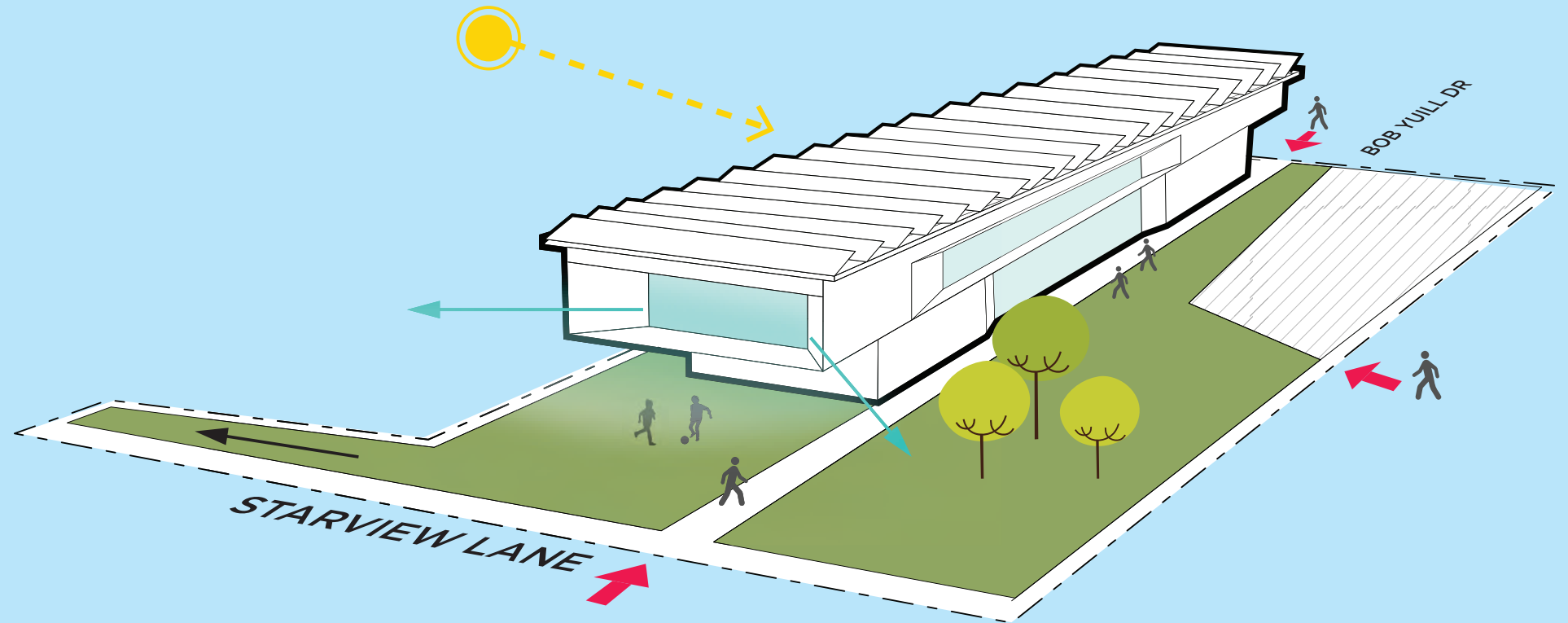
The second floor of the building extends beyond the first floor to create a covered outdoor terrace.





# Design Concepts

The goal is to create a community landmark that is representative of its community. It strives to create more open green space, and to establish strong neighbourhood connections with linkages to the Humber River Trail.



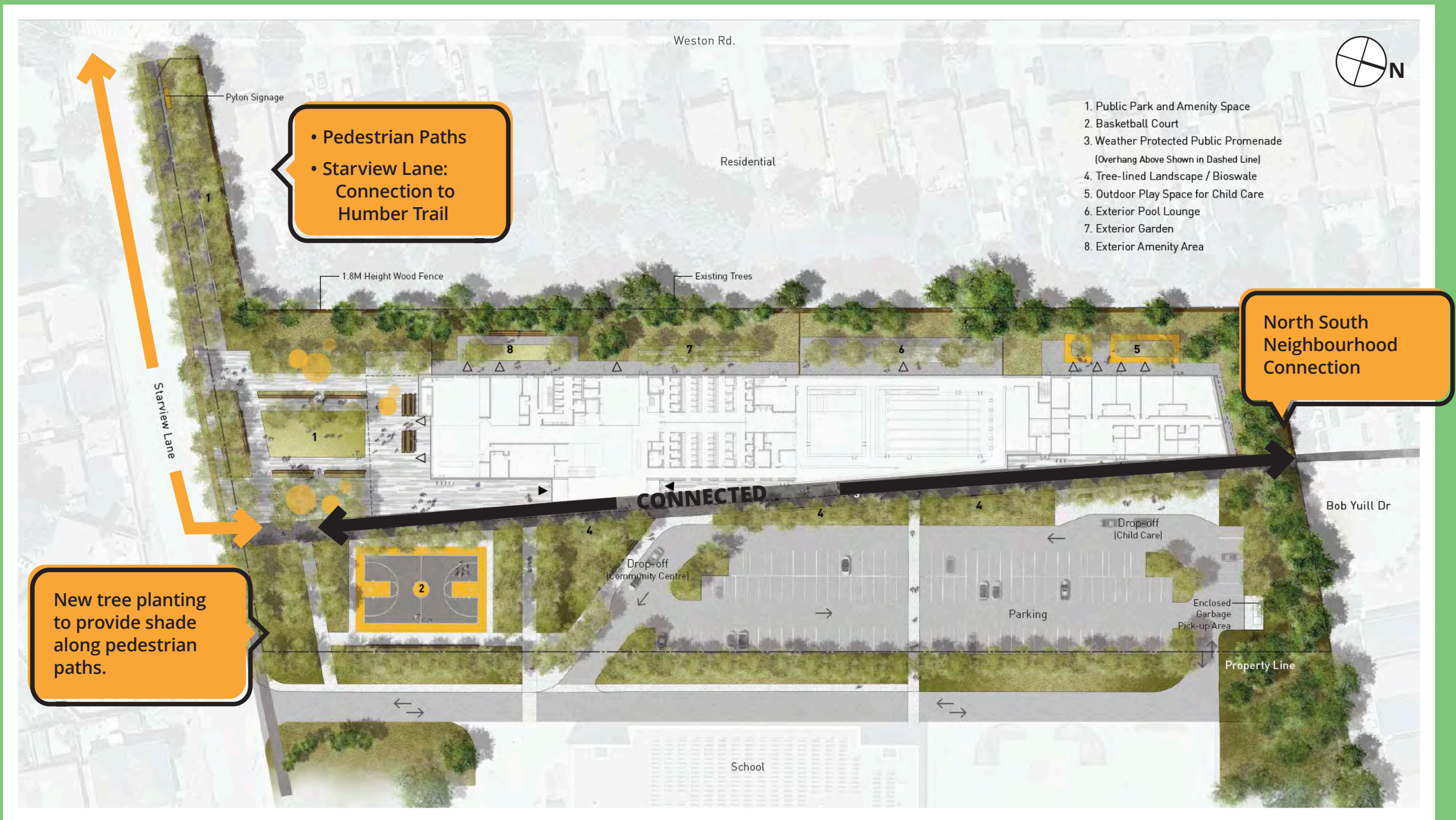
---

# Outdoor spaces





# Landscape Features: Community Connector





Weston Rd.

Residential

Starview Lane

1.8M Height Wood Fence

Existing Trees

1. Public Park and Amenity Space

2. Basketball Court

3. Weather Protected Public Promenade  
(Overhang Above Shown in Dashed Line)

4. Tree-lined Landscape / Bioswale

5. Outdoor Play Space for Child Care

6. Exterior Pool Lounge

7. Exterior Garden

8. Exterior Amenity Area

Drop-off (Community Centre)

Drop-off (Child Care)

Parking

Enclosed Garbage Pick-up Area

Property Line

School

Bob Yuill Dr

Pylon Signage

Pedestrian student safety enhanced by minimizing driveway crossings

New parking lot with drop-off for child care and community centre.

Traffic studies completed to measure traffic volume and verify needs.

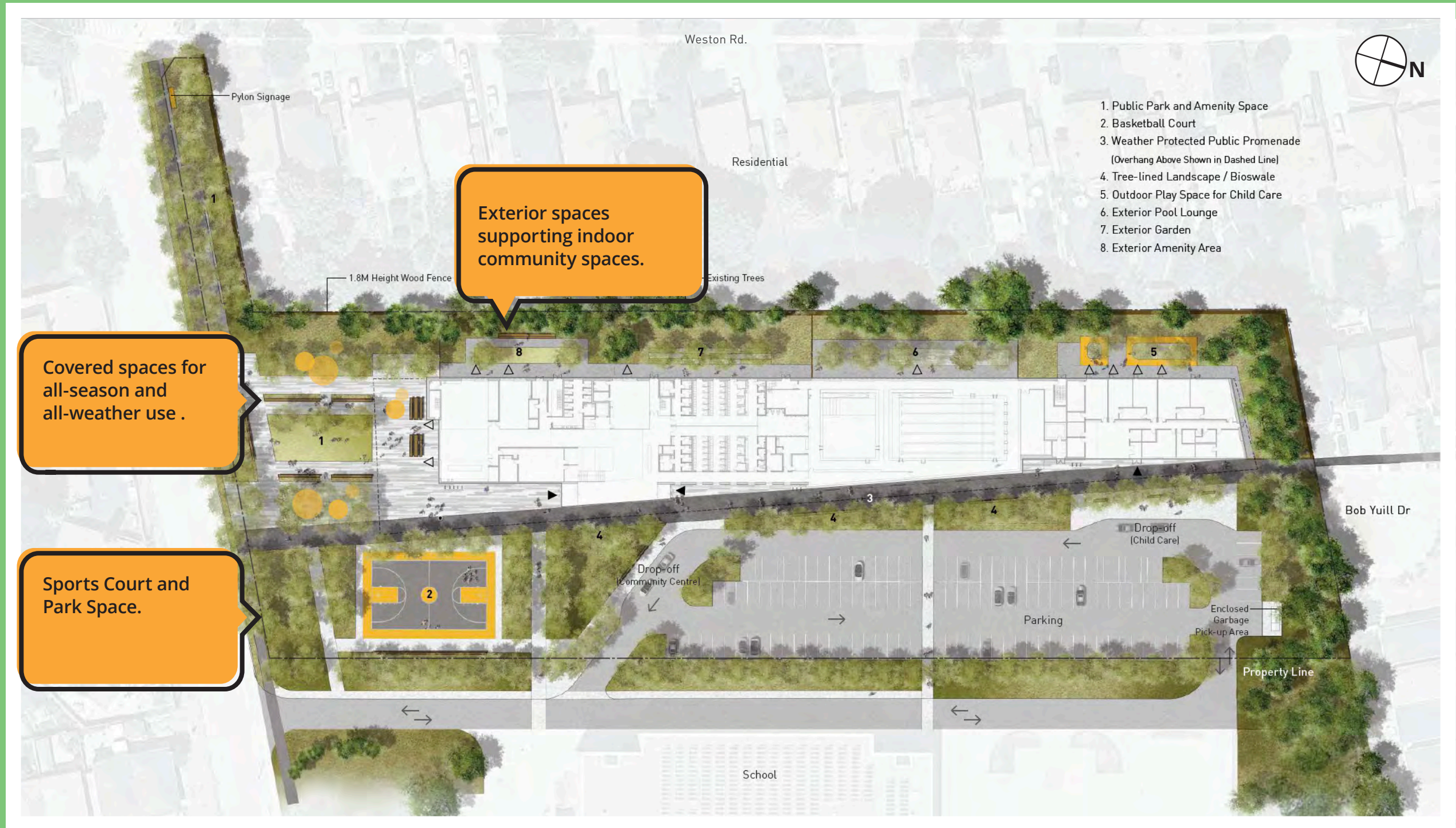


# Landscape Features: Good Neighbours



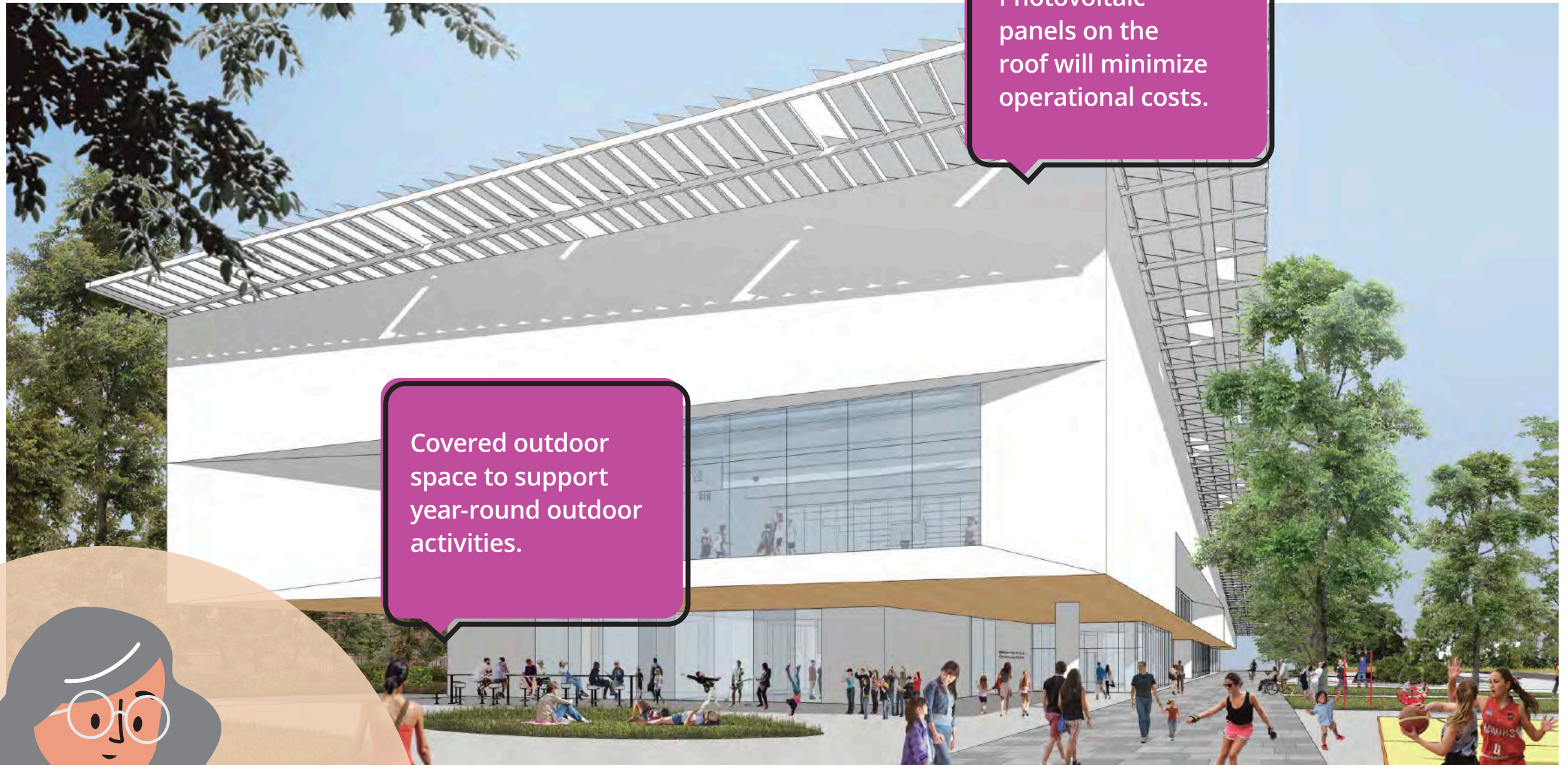


# Landscape Features: Outdoor Rooms





# View from Starview Lane



Covered outdoor space to support year-round outdoor activities.

Photovoltaic panels on the roof will minimize operational costs.



## We heard the community would like....

- "A courtyard".
- "Plaza space with places to socialize".
- "Places to sit and eat outside".
- "Long term sustainability of this centre— i.e. maintenance costs. Affordability".
- "Be green and ecological—be innovative".
- "Make it interactive and educational".



# View from Starview Lane

Deep overhangs will reduce glare and excess heat build-up indoors.

A better pedestrian connection between Bob Yuill Drive and Starview Lane will make accessibility to the new community centre and St. Basil-the-Great much better.

## We heard the community would like....

- "Access enhancements, bike paths, better walking options..."
- "Direct access for Issac Devins neighbourhood to the north".
- "Keep path connections for pedestrians".
- "Make multiple access points for bikes and reduce the use and reliance on cars".
- "Connections between surrounding residential neighbourhoods".



# View from Starview Lane

Maintain the existing tree line and create a 'green buffer' to maintain privacy between the new building and neighbouring houses.

A new building that responds to the size and scale of the neighbourhood.

A variety of outdoor active and social spaces.



## We heard the community would like....

- "Keep scale/height sensitive to neighbours".
- "Minimize views to the west for privacy".
- "Maintain privacy and security for existing houses".
- "Multi-sports court is a great idea!
- "A place where I can connect with other members of my community".
- "A place to spend time with friends".



# Landscape Plan Features

Spaces to relax and connect with nature.

Accessibility is important within the new community centre.  
Spaces need to be designed for all to enjoy.

A variety of outdoor spaces, including a place for outdoor fitness, as well as places to sit, gather and relax.

Western North York  
Community Centre

## We heard the community would like....

- "Variety of programs for different ages".
- "Opportunities for youth to engage with the community, especially since the new centre will be built beside a high school. A youth space and outdoor courts would be a good idea."
- "Fully accessible for the disabled and elderly"
- "Accessibility for seniors —e.g. ramps, handrails, and parking access".
- "Close to nature".
- "Nature inspired play spaces".



# Landscape Plan Features

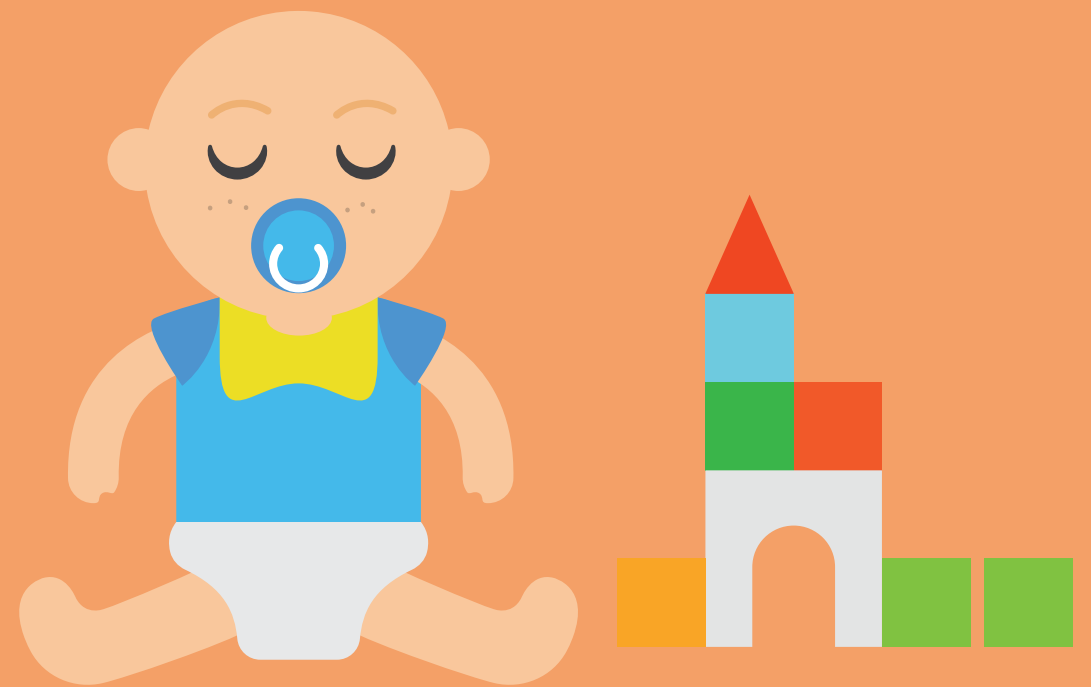


## We heard the community would like....

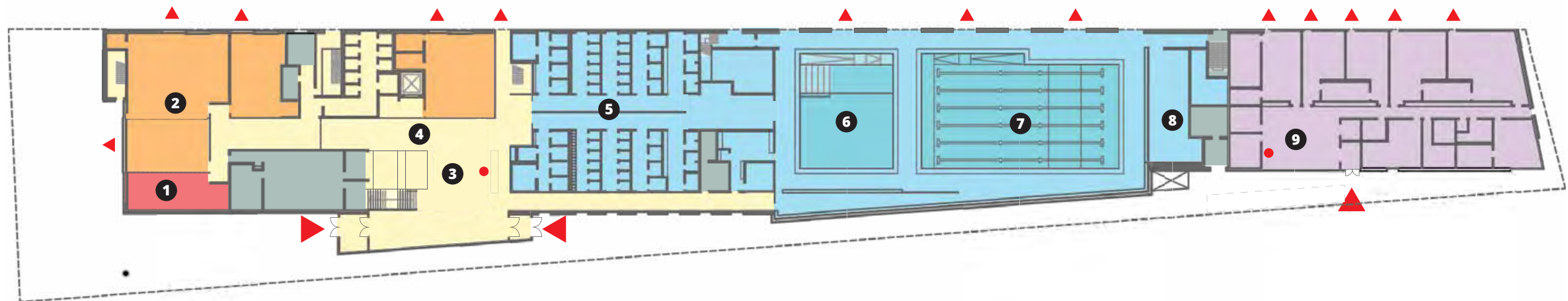
- "Walk and cycle to the river, 43 miles of trails nearby".
- "Safe access to bike trail".
- "A place to park/lock up your bicycle".
- "Well lit and safe for kids".
- "Plan for safety and security and most importantly—good maintenance and cleanliness of the centre and surroundings".
- "Ensure that it is compatible with all ages—children to seniors".

---

# Indoor spaces



# Building Plans: Amenities



## Ground Level Program key

1. Teaching Kitchen
2. Multi-purpose Rooms: rooms that can host a variety of different activities.
3. Community Living Room: large gathering space in the lobby.
4. Servery: area to serve snacks and beverages by the community.
5. Universal Changerooms: non-gendered changerrooms.
6. Leisure Pool
7. Lap Pool
8. Wet Classroom: program room for pool activities.
9. Child Care

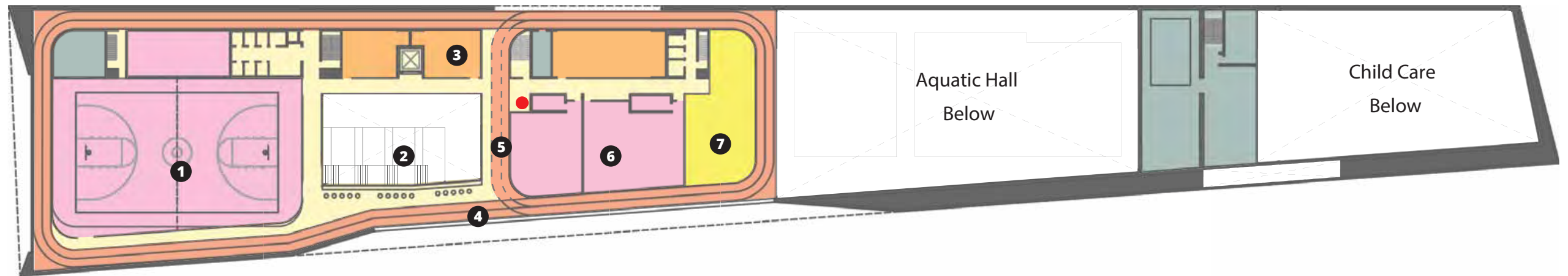
- ▲ Exterior Access
- ▲ Main Entrance
- Control Point

0M 5 10 20





# Building Plans: Amenities

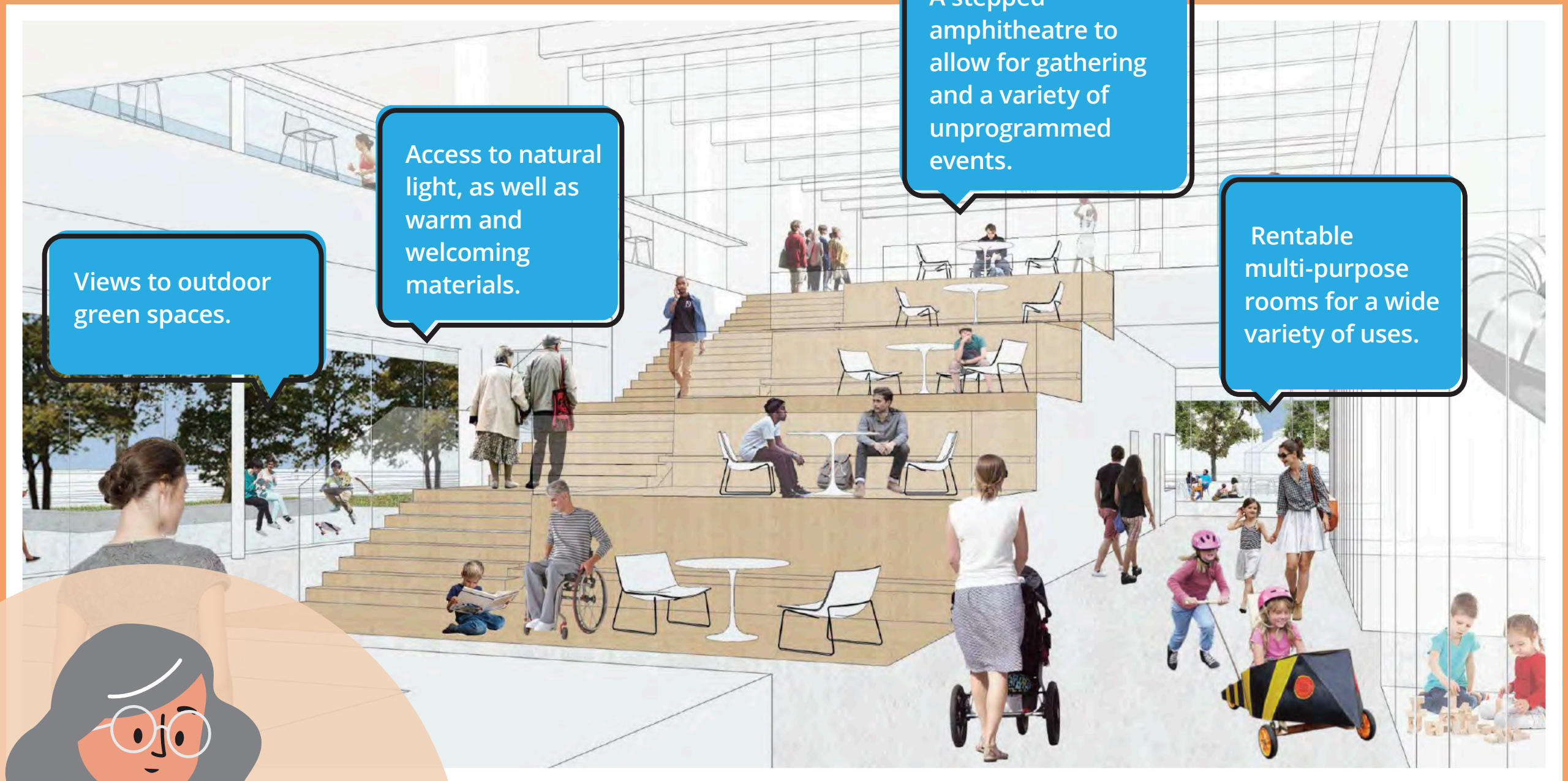


## Second Level Program key

1. Gymnasium
2. Community Living Room: large gathering space in the lobby.
3. Program Studios: fitness rooms for active programs.
4. Long Walking Track
5. Short Walking Track
6. Dance/ Fitness Studios
7. Social Space/ Gaming Garage: social space with games and comfortable seating.



# Community Living Room



Views to outdoor green spaces.

Access to natural light, as well as warm and welcoming materials.

A stepped amphitheatre to allow for gathering and a variety of unprogrammed events.

Rentable multi-purpose rooms for a wide variety of uses.

## We heard the community would like....

- "Create an affordable space for meetings, events and fun recreational activities. We want a fun, creative space with lots of room for all activities".
- "Large rooms with tables and chairs,

kitchenette, accessible washrooms and elevators".

- "Clean, natural environment".
- "Warm, not cold, atmosphere and naturalistic".
- "More natural light".
- "Connect with the neighbourhood".



# Community Living Room



A community kitchen for teaching and social opportunities.

Space for community art displays.

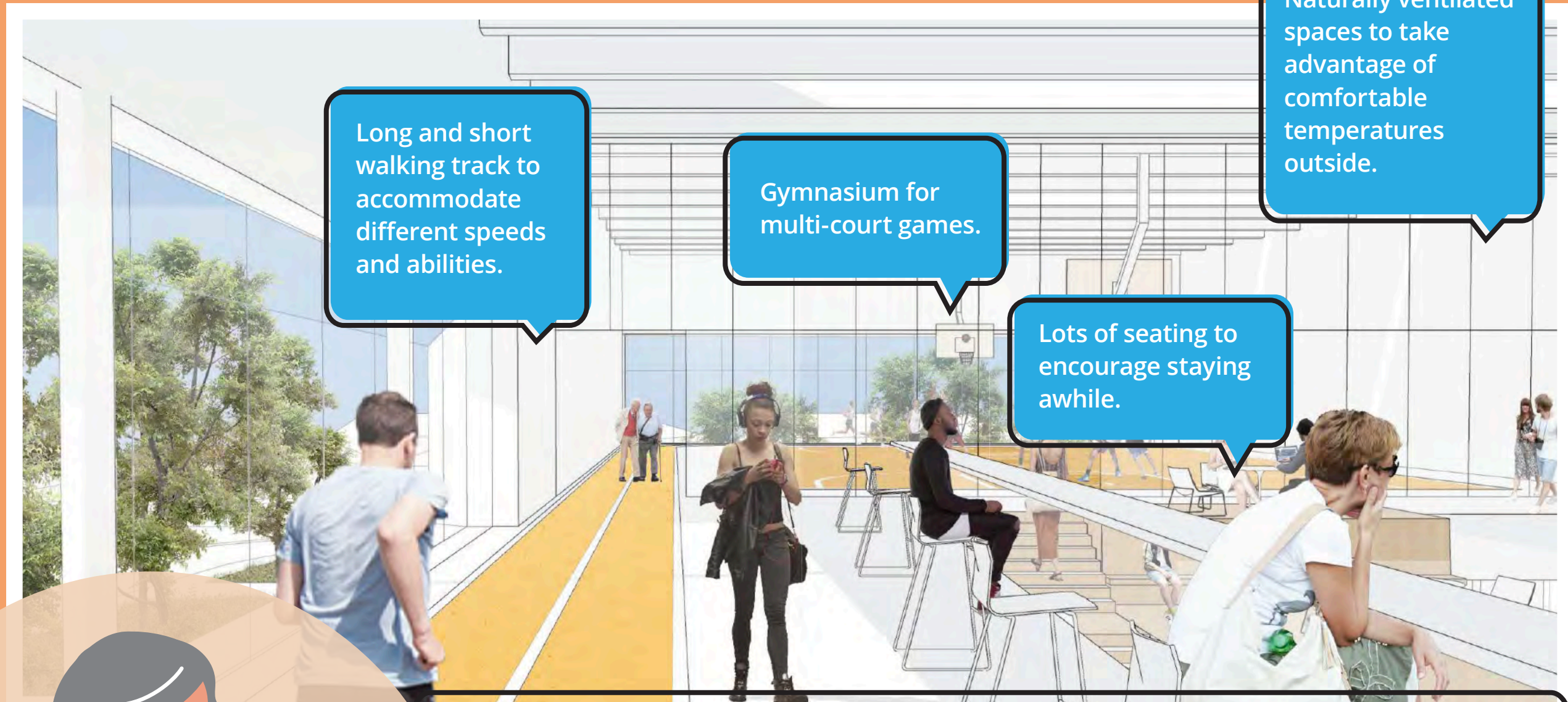
A small servery for community use.

## We heard the community would like....

- "Exhibition space/room for art and to display our paintings".
- "To make an inclusive community centre, not just for athletes, art and dance and learning to cook are all important".
- "To create a positive community relationship and accommodate the community's needs as time passes".
- "A space for people to learn and engage with the community, learn new life skills".
- "Youth spaces so they can be part of the community".
- "Healthy food options for students".
- "Community Kitchen".
- "Shared cooking program for seniors".



# Second Storey Community Living Room and Gymnasium



Long and short walking track to accommodate different speeds and abilities.

Gymnasium for multi-court games.

Lots of seating to encourage staying awhile.

Naturally ventilated spaces to take advantage of comfortable temperatures outside.

## We heard the community would like....

- "An indoor walking track and fitness facilities are popular and well-used by all".
- "Quality indoor walking track".
- "Use of glass for multipurpose rooms to engage more people".
- "Open to all ages and welcoming".
- "A big gym, daily programs and nice fitness equipment".
- "The most important quality to plan for is for everyone in the community to be able to come together and have a good time!".
- "Spacious, options for various programs".





# Aquatic Centre and Second Storey Programs

Social space for traditional and electronic games with views into the pool..

Multi-purpose rooms, dance and fitness studios of varying sizes to accommodate a full range of programs.

Sliding doors for natural ventilation when weather is nice.

Controlled outdoor terrace off of pool deck for lounging.

## We heard the community would like....

- "Most important is to offer a lot of sports, games and chances to participate in activities and engaging with my friends".
- "Games room for families and youth".
- "Meeting room for community associations".
- "Dance class, yoga classes, music and more programs".
- "An eco-pool with natural light".
- "Different pool areas and zones for kids, youth, adults and seniors".
- "Programs that are inclusive of all ages from toddlers to seniors".
- "Youth spaces so they can be part of the community."



# Aquatic Centre

Ramps into pools tanks for a fully accessible swimming experience

Universal change rooms with individual and public showers.

Leisure pool with bubble benches and splash toys.

Six lane lap pool for fitness, aqua sports and swimming lessons.

## We heard the community would like....

- "Lift/ramp for accessibility".
- "Inclusive spaces with universal changerooms - would benefit me and make people feel safe".
- "Improved showers and changerooms".
- "Aquatic fitness, especially for seniors".
- "Spray features and family amenities".
- "To make the centre a safe environment for people to be a part of".
- "Swimming lessons - adult and childcare— before and after care programs".



Thanks for taking the tour and  
providing us with your feedback.

Look for our updates at  
**CreateYourPlace.ca**

