

SAFELY HOLDING RELIGIOUS SERVICES, RITES AND CEREMONIES



Limit capacity to ensure physical distancing. No more than 15% room capacity indoors.



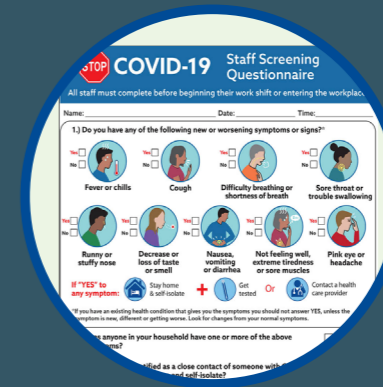
Social gatherings before/after service are restricted to 5 people outdoors.



Indoor social gatherings are not permitted.



Masks must be worn indoors, and when physical distancing is difficult.



Post a COVID-19 screening sign. Stay home if sick.



Keep attendance lists with name and contact information.

April 6, 2021