

SUPPORTIVE HOUSING IN TORONTO



Creating affordable homes with supports for people in need at 7 Glamorgan Avenue

There are approximately 7,800 people experiencing homelessness in Toronto. New homes with supports are urgently needed to ensure everyone has a warm and safe place to call home.

To respond to this urgent need, the City of Toronto is building modular housing at 7 Glamorgan Avenue. The new building will provide homes for approximately 57 people and support their health and well-being.

The new homes will be:

- Dedicated to women, Indigenous residents, seniors, people with disabilities and other people who are experiencing or at risk of homelessness
- Studio apartments with a bathroom and a kitchen

The building will include amenities such as shared laundry, a commercial kitchen, a dining area, a communal area and programming space.



IMPORTANT INFORMATION

Please have this translated

重要資訊 請找人為你翻譯

重要資訊 請找人為你翻譯

MAHALAGANG IMPORMASYON

Mangyaring isalin ito

முக்கிய தகவல்

இதை மொழிபெயர்க்கவும்

Preliminary artist rendering – subject to approval



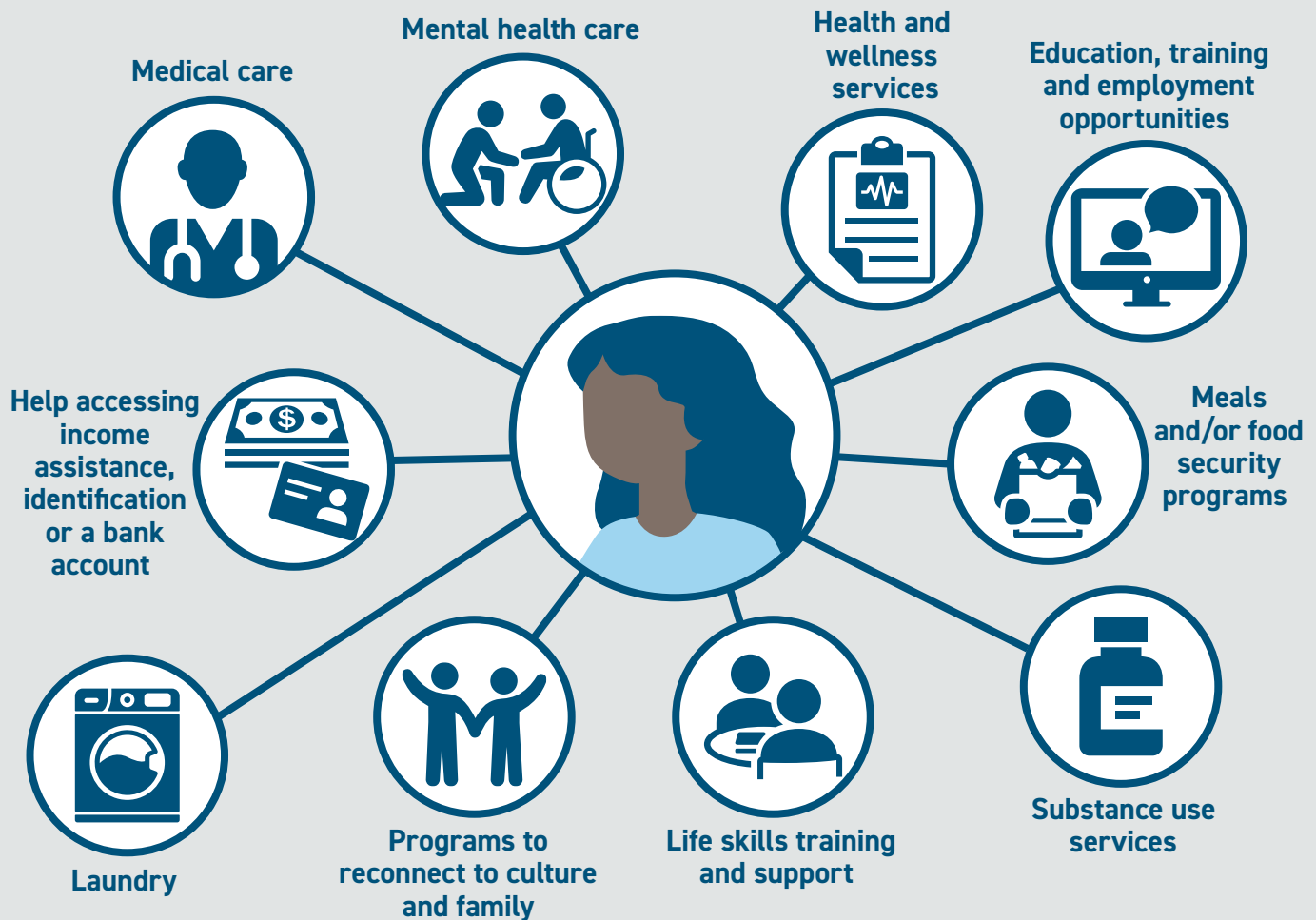
Providing dignity and supporting well-being

The City of Toronto affirms that adequate housing is essential to a person's dignity and worth and that all residents should have an equal opportunity to thrive and develop to their full potential.

The building will be managed by a **qualified and experienced non-profit housing provider** that brings professional building management experience and expertise coordinating customized supports tailored to meet the unique needs of each resident.

Experienced staff will be in the building 24/7 to connect residents to a range of supports provided by the building's non-profit housing operators, health care professionals and other community-based programs.

Homes with supports: connecting residents to services and programs



Building sustainable and inclusive communities

Providing residents with good quality, affordable housing is the cornerstone of vibrant, healthy neighbourhoods. It also supports the environmental and economic health of the city, the region and the country as a whole.

Bringing people inside means there are fewer people outside struggling to survive. When a person chooses to live in homes with supports, they:

- have a warm, safe place to permanently call home
- can access the necessities of life such as food, washrooms and laundry
- can begin to heal from the damage caused by living outside
- strengthen community connections

Building homes with supports can offer an opportunity for people to come together and create welcoming, safe and inclusive communities for all.



Working together to address homelessness in our city

Homelessness is a complex challenge that requires everyone's participation including all orders of government, Indigenous communities, people with lived experience of homelessness, persons who are members of equity-seeking groups, service providers, private, non-profit and community groups and neighbours.

By working together, we can reduce the number of people experiencing homelessness and help save lives.



Community safety is our shared priority

Based on experience here in Toronto and other communities where there is supportive housing, we do not anticipate any increased community safety issues in the neighbourhood as a result of the new housing.

The property will be managed by experienced non-profit housing providers who will be responsible for responding to community concerns related to the building. The City will continue to work with the selected housing providers after the residents move in.

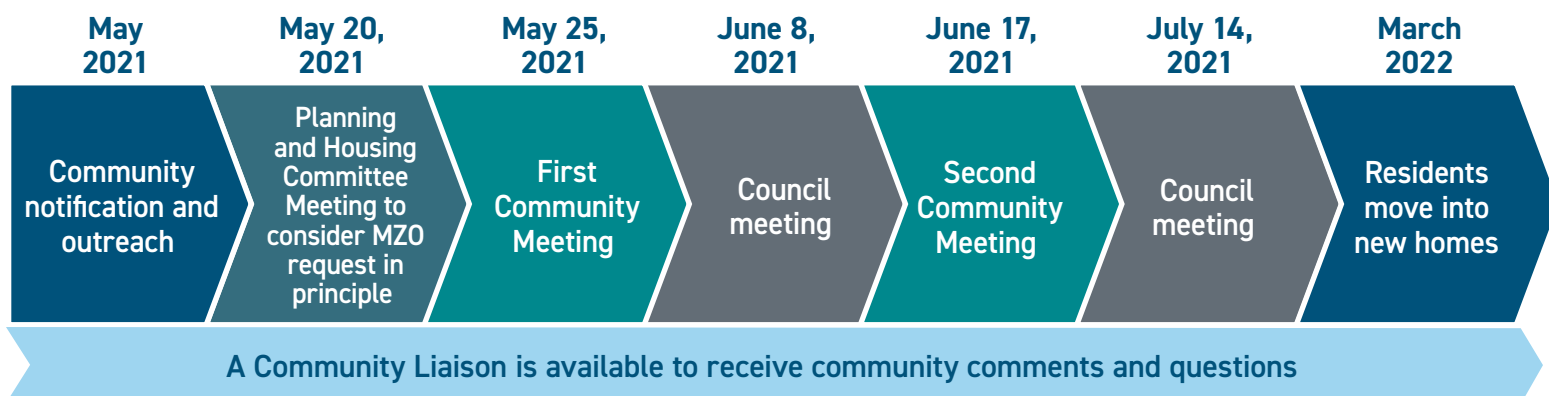
Working with neighbours toward a successful project

The City is committed to working with the local community throughout every stage of development and after the building opens.

We encourage neighbours to share their interests and priorities for the site, provide feedback on building and site design elements such as lighting, pathways and landscaping, and offer suggestions for how these new homes could benefit both the new residents and the neighbourhood.

Moving forward at 7 Glamorgan Avenue


The City of Toronto will commence modular building construction to provide homes with supports for people in need as quickly as possible.



Dates in the timeline are approximate and subject to change.

To provide feedback or to ask questions:

Contact the Community Liaison:

 Phone: **437-684-5857**
(Monday to Friday 9 a.m. to 4 p.m.)

 Email: **communityliaison@bigideaspace.ca**

Contact Councillor Thompson's office:

 Phone: **416-397-9274**

 Email: **councillor_thompson@toronto.ca**

For more information on these new homes, please visit: **www.toronto.ca/7Glamorgan**

These homes are part of the City of Toronto's Modular Housing Initiative, Phase Two. In 2020, City Council approved the creation of 250 modular supportive homes on City-owned sites in 2020 and 2021. Funding for these new homes will come from the City's Development Charges Reserve Fund for Subsidized Housing and the Government of Canada, through Canada Mortgage and Housing Corporation's Affordable Housing Innovation Fund.