

SUPPORTIVE HOUSING IN TORONTO



Creating affordable homes with supports for people in need at 150 Dunn Avenue

There are approximately 7,800 people experiencing homelessness in Toronto. New homes with supports are urgently needed to ensure everyone has a warm, safe place to call home.

To respond to this urgent need, the City of Toronto is building modular housing at 150 Dunn Avenue. The new four-storey building will provide homes for approximately 51 people and support their health and well-being.

The new homes will be:

- Dedicated to seniors, women, Indigenous residents, racialized people, people with disabilities and other people who are experiencing or at risk of homelessness
- Studio apartments with a bathroom and a kitchen

The building will include amenities such as shared laundry, a commercial kitchen, a dining area, a communal area and programming space.

IMPORTANT INFORMATION

Please have this translated

For materials in Tibetan, please visit www.toronto.ca/150Dunn

重要資訊 請找人為你翻譯

重要资讯 请找人为你翻译

INFORMACIÓN IMPORTANTE

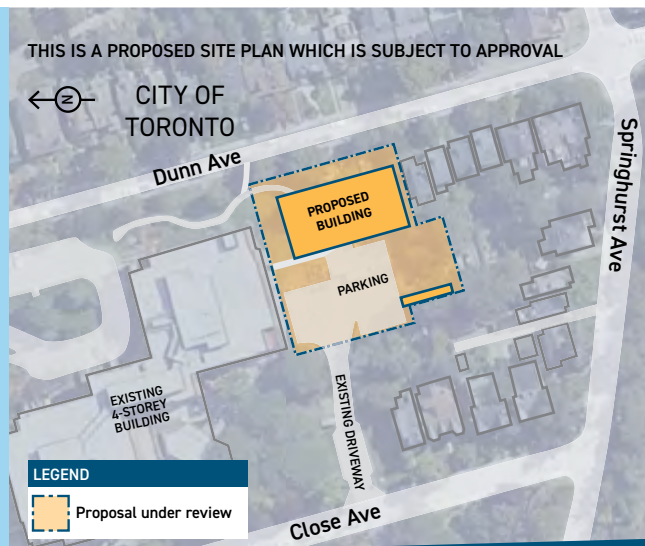
Busque a alguien que le traduzca

MAHALAGANG IMPORMASYON

Mangyaring isalin ito

FONTOS INFORMÁCIÓ

Kérem, fordítsa le ezt



This project is delivered in partnership with all levels of government, the University Health Network (UHN) Gattuso Centre for Social Medicine and the United Way of Greater Toronto (UWGT). The support services model for this site will be developed by UHN's Gattuso Centre for Social Medicine, the City of Toronto and community partners. It will incorporate a range of health and social services to be delivered onsite.

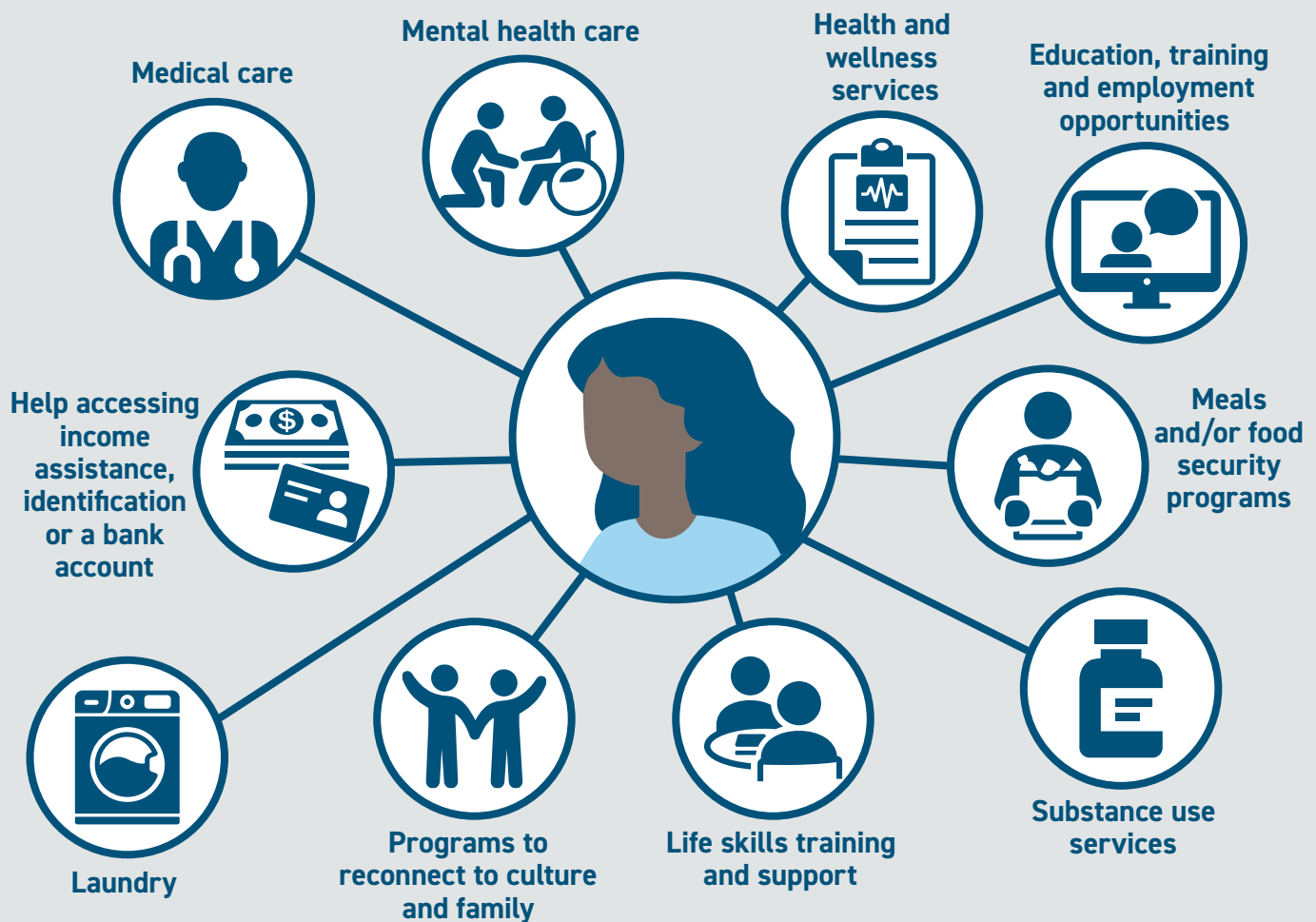
Providing dignity and supporting well-being

The City of Toronto affirms that adequate housing is essential to a person's dignity and worth and that all residents should have an equal opportunity to thrive and develop to their full potential.

The building will be managed by a **qualified and experienced non-profit housing provider** that brings professional building management experience and expertise coordinating customized supports tailored to meet the unique needs of each resident.

Experienced staff will be in the building 24/7 to connect residents to a range of supports provided by the building's non-profit housing operators, health care professionals and other community-based programs.

Homes with supports: connecting residents to services and programs



Building sustainable and inclusive communities

Providing residents with good quality, affordable housing is the cornerstone of vibrant, healthy neighbourhoods. It also supports the environmental and economic health of the city, the region and the country as a whole.

Bringing people inside means there are fewer people outside struggling to survive. When a person chooses to live in homes with supports, they:

- have a warm, safe place to permanently call home
- can access the necessities of life such as food, washrooms and laundry
- can begin to heal from the damage caused by living outside
- strengthen community connections

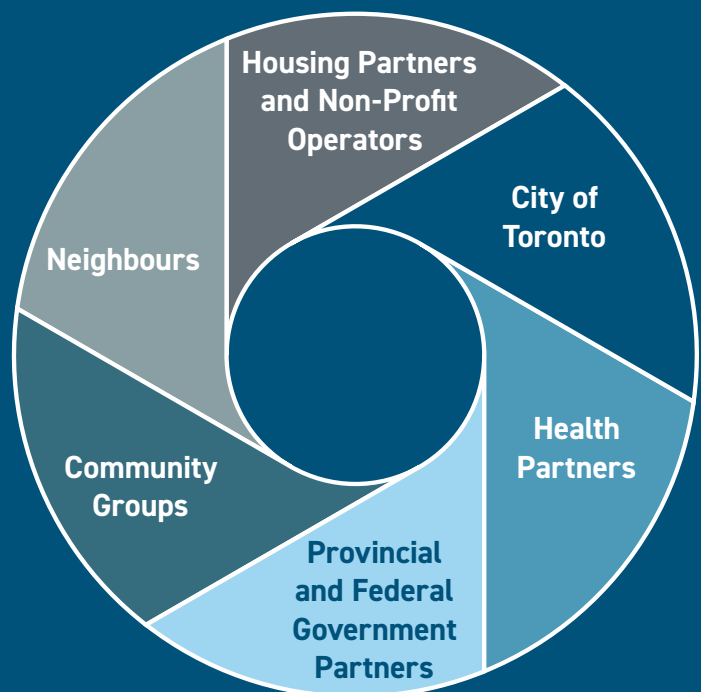
Building homes with supports can offer an opportunity for people to come together and create welcoming, safe and inclusive communities for all.



Working together to address homelessness in our city

Homelessness is a complex challenge that requires everyone's participation including all orders of government, Indigenous communities, people with lived experience of homelessness, persons who are members of equity-deserving groups, service providers, private, non-profit and community groups and neighbours.

By working together, we can reduce the number of people experiencing homelessness and help save lives.

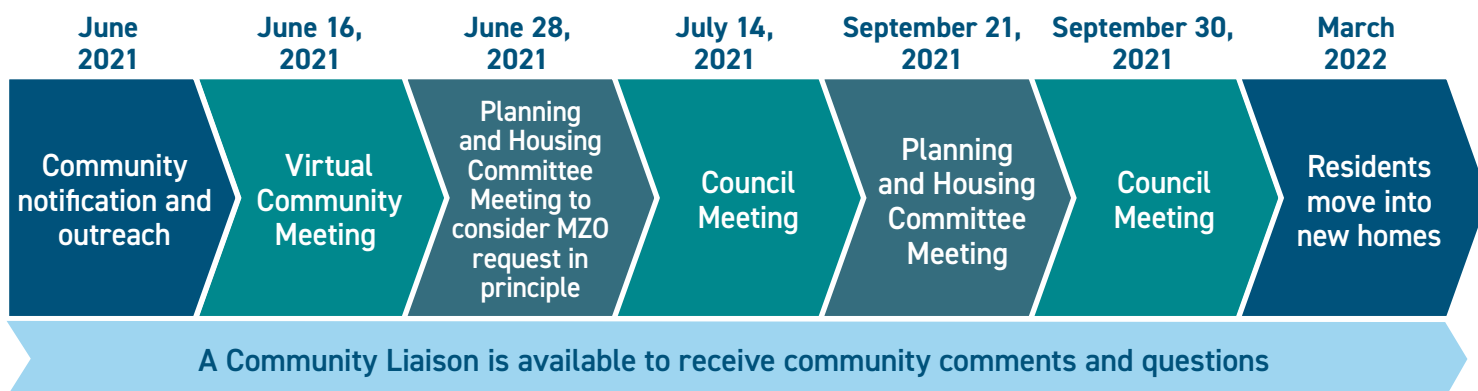


Identified as a priority in the HousingTO Action Plan, homes with supports provide people in need with good quality, safe, affordable and permanent homes.



Moving forward at 150 Dunn Avenue

The City of Toronto will begin modular building construction to provide homes with supports for people in need as quickly as possible.



Dates in the timeline are approximate and subject to change.

To provide feedback or to ask questions:

Contact the Community Liaison:

Phone: **437-684-5857**
(Monday to Friday 9 a.m. to 4 p.m.)

Email: **communityliaison@bigideaspace.ca**

Contact Councillor Perks' office:

Phone: **416-392-7919**

Email: **councillor_perks@toronto.ca**

For more information on these new homes, please visit: **www.toronto.ca/150Dunn**

These homes are funded as part of the Government of Canada's Rapid Housing Initiative (RHI) which is providing \$1 billion in grant funding nationally. In Toronto, this funding can cover the cost of acquisition of land and construction of modular housing; acquisition of land and existing buildings for the purpose of conversion to affordable housing; and acquisition of land and rehabilitation of housing.