



York U Cycling Connections

Project Context & 30 Percent Design Illustration

Jan. 9, 2020

Project Goals & Benefits

- Grow and connect the cycling network in the York University Keele Campus area
- Close a gap in the Finch West Hydro Corridor Trail across Keele Street using observed desire lines while preserving for a potential future cycling route on Keele Street
- Create safe, comfortable cycling facilities supportive of all-ages-and-abilities based on the draft *Toronto On-Street Bikeway Design Guidelines*
- Close sidewalk gap and apply legislated accessibility treatments within the project area
- Improve the public realm through new landscaping and plantings



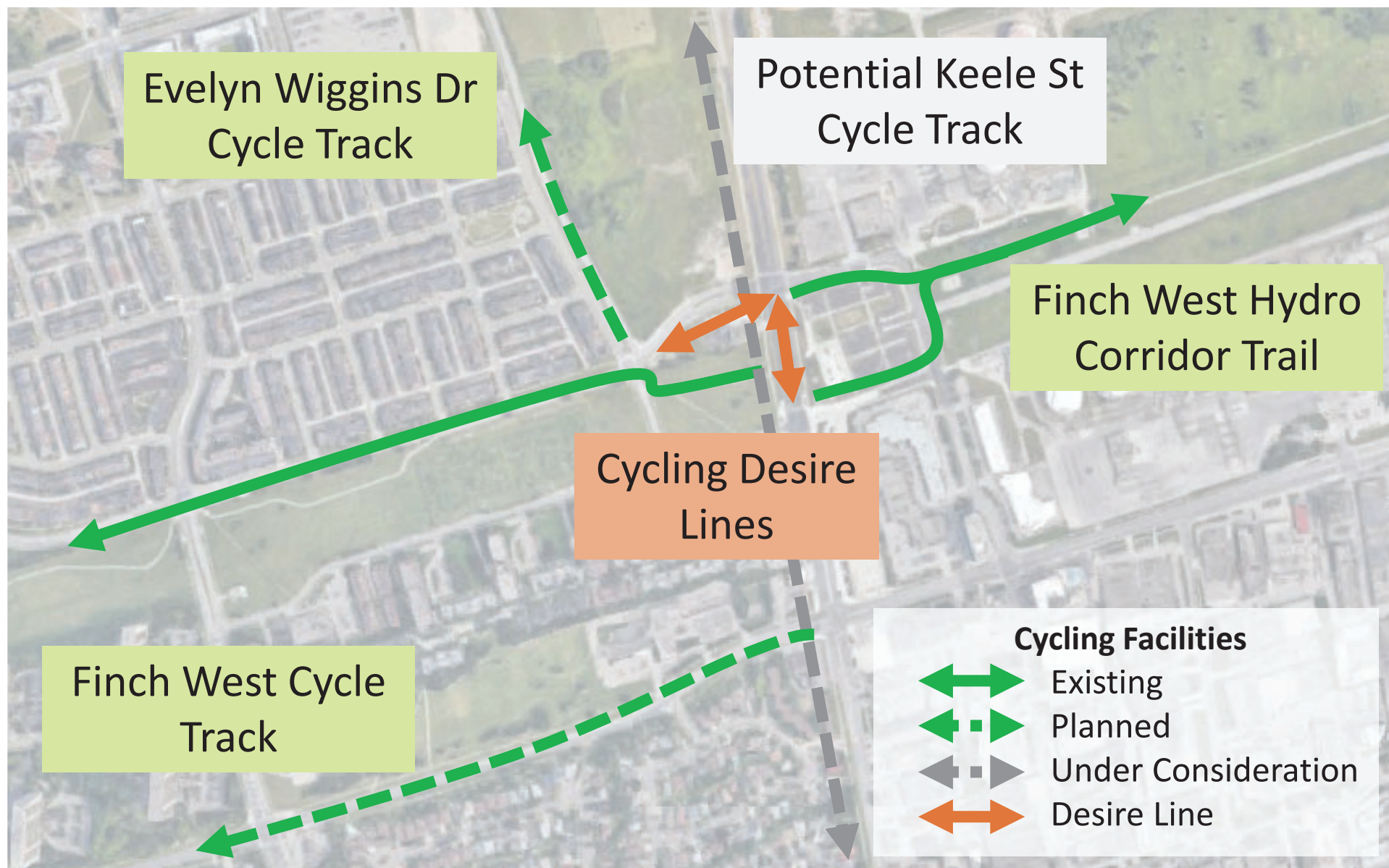
Project Area



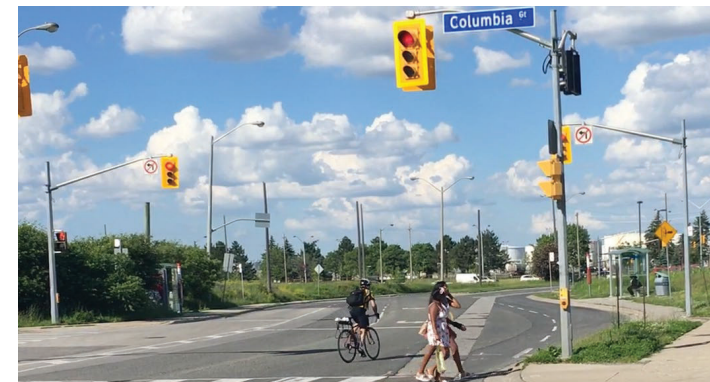
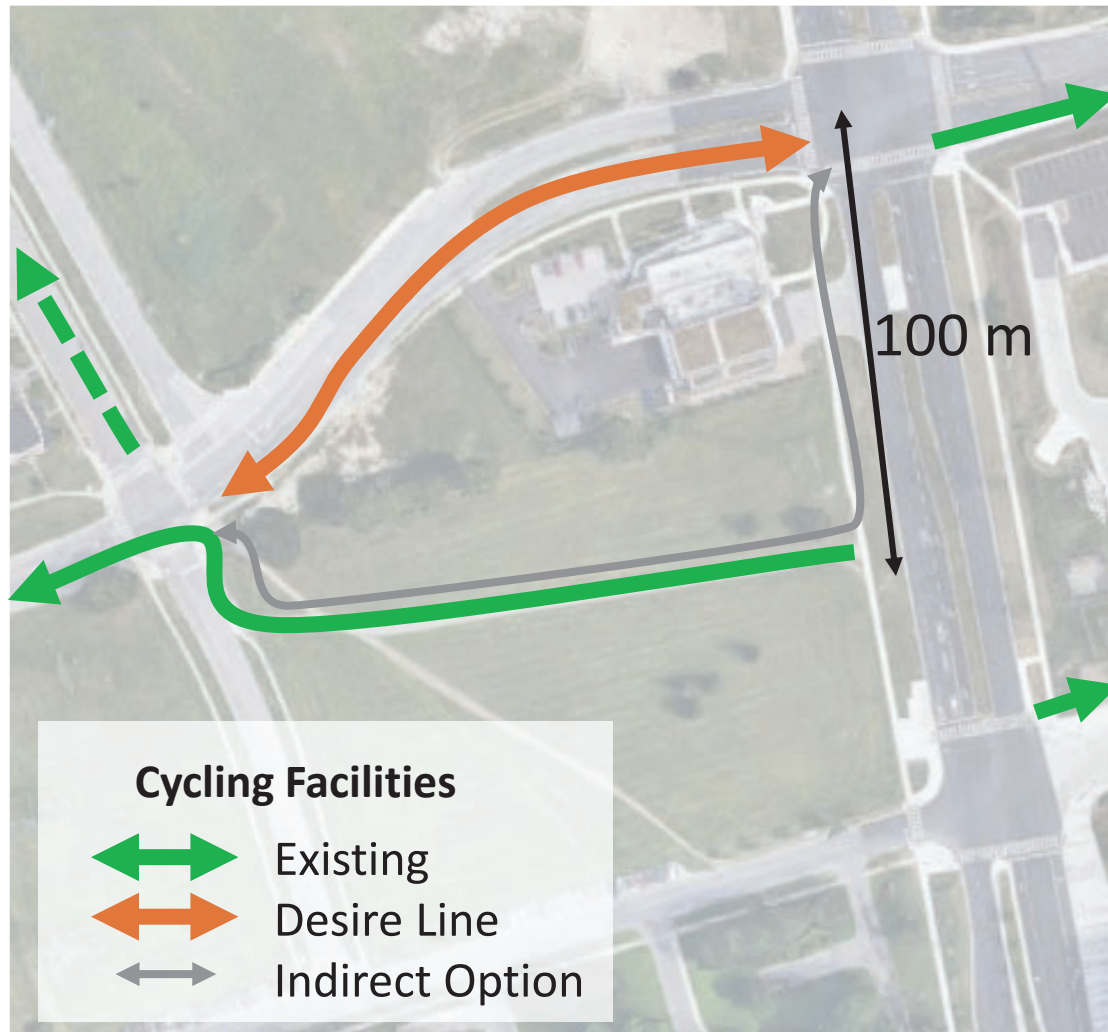
Project Area

Finch West TTC

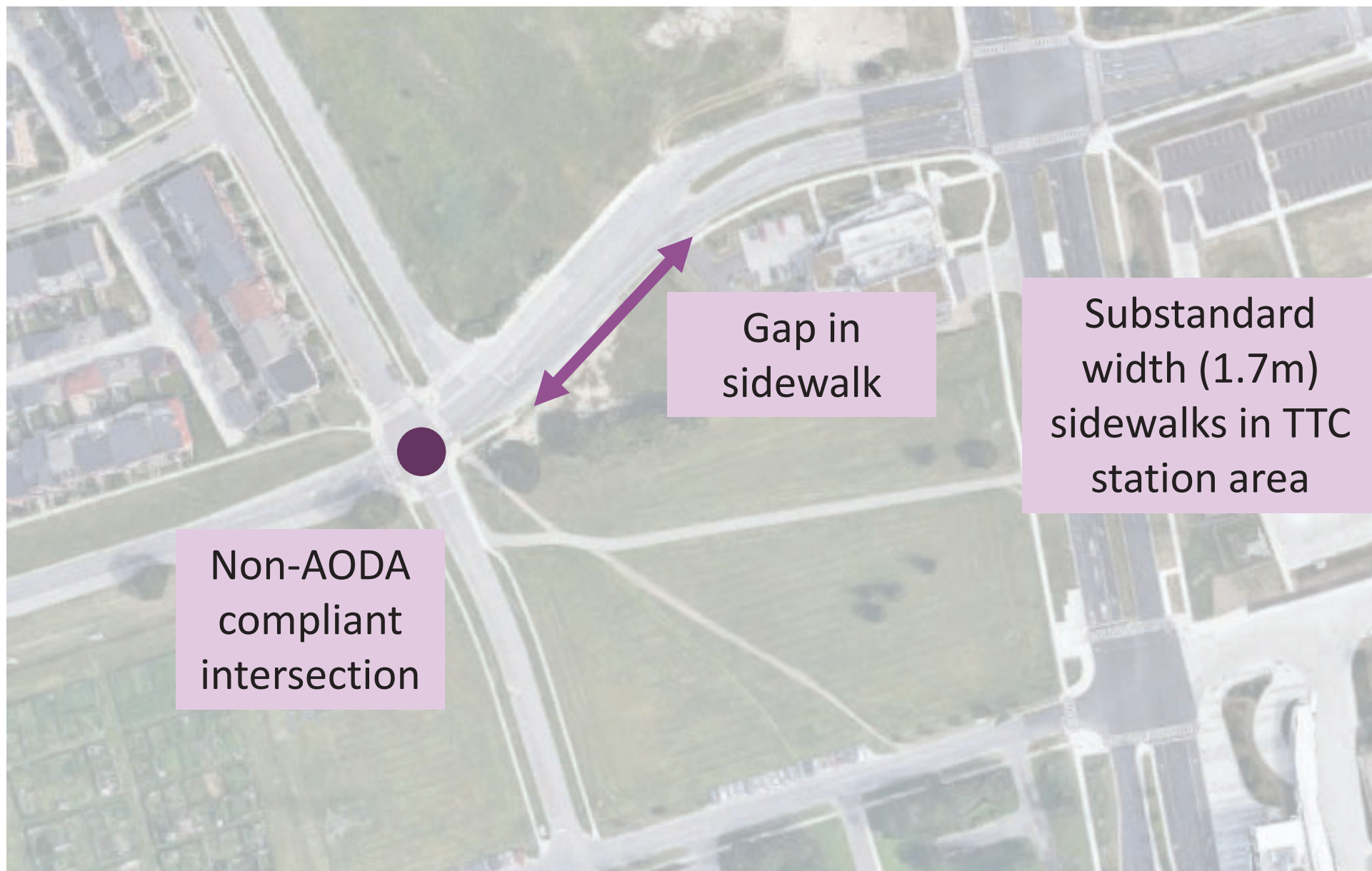
Existing/Planned Cycling Connections



Desire Line – Murray Ross Parkway



Context – Walking



Planning Level Cost Estimates

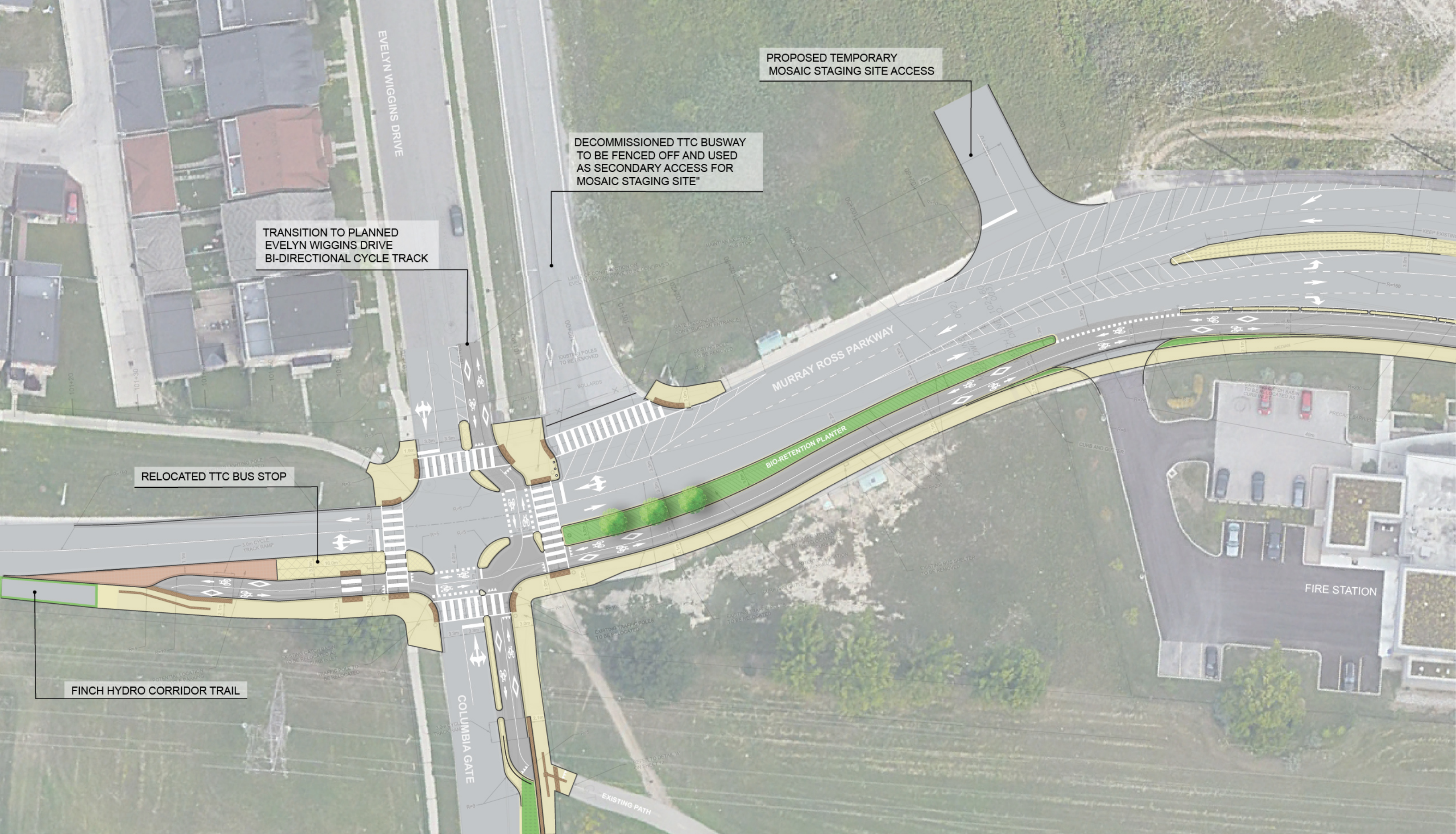
Segment	Cost Estimate
Murray Ross Parkway <i>Evelyn Wiggins Drive to Keele Street, excluding intersections</i>	\$340,000
Keele Street <i>Murray Ross Parkway to Four Winds Drive, including intersection of Keele Street and Four Winds Drive</i>	\$210,000
Intersection Improvements <i>Keele Street at Murray Ross Parkway</i>	\$310,000
TOTAL:	\$860,000

Cost estimates are based on 30-percent design and include a 25% contingency



YORK U CYCLING CONNECTIONS, PROJECTS A & B
MURRAY ROSS PARKWAY, EVELYN WIGGINS DR TO KEELE ST
EXISTING CONDITIONS



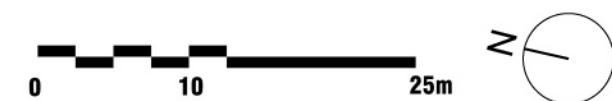


YORK U CYCLING CONNECTIONS, PROJECTS A & B
MURRAY ROSS PARKWAY, EVELYN WIGGINS DR TO KEELE ST
PROPOSED DESIGN





YORK U CYCLING CONNECTIONS, PROJECTS A & B
KEELE STREET, MURRAY ROSS PKWY TO FOUR WINDS DR
EXISTING CONDITIONS





YORK U CYCLING CONNECTIONS, PROJECTS A & B
KEELE STREET, MURRAY ROSS PKWY TO FOUR WINDS DR
PROPOSED DESIGN

