

June 30, 2021 (corrected July 8, 2021)

Site Investigations Along Waterfront

Contract #: 9117-20-7024

Expected Start Dates: Late June 2021







Expected End Dates: Winter 2023

**Timeline is subject to change.*

In preparation for the Inner Harbour West Tunnel of the Don River and Central Waterfront Wet Weather Flow System, the City of Toronto will be carrying out site investigations to determine soil, rock and groundwater conditions, and confirm below ground utilities at multiple locations across the downtown waterfront. See maps pages 2-4. Boreholes and monitoring wells for groundwater conditions will be installed between late June to December, monitored for 18 months and removed by Winter 2023. These boreholes are required to develop engineering designs for future construction of the Inner Harbour West Tunnel.

The Don River & Central Waterfront Wet Weather Flow System will help improve the water quality of the Don River and Lake Ontario. Overflows of rain and snow from extreme storms will be held in a new network of underground shafts and tunnels until there is capacity to clean it at the Ashbridges Bay Treatment Plant. This project is part of the Council-approved 2017-2026 Capital Works Program. Learn more about work already underway for the Coxwell Bypass Tunnel at [Toronto.ca/drcw-project](https://toronto.ca/drcw-project)

WHAT TO EXPECT

Icon	Description
	Work Hours: Work will take place between 7:00 a.m. and 7:00 p.m., Monday to Friday, with work after hours and on Saturdays as required. This work will comply with the City's Noise Bylaw.
	Drilling and Dust: A drill rig will excavate an eight inch diameter borehole up to 70 metres below ground and a groundwater monitoring well will be installed. Drilling will take approximately three to four weeks per borehole. Dust will be minimized.
	Road Access: No traffic impacts are anticipated. Some sites are in the City's Right-of-Way and include parking/lay-by lanes. Access for emergency vehicles will be maintained at all times. Parking and idling of construction vehicles will not be permitted on streets. Sidewalk & Path Access: There will be minimal impacts at some sites. Detours or use of alternate routes will be available to redirect pedestrians and cyclists.
	Traffic Management: Unloading and loading equipment may result in temporary disruption to local traffic. In order to complete the work effectively and in a safe manner, some pedestrian and vehicle traffic restrictions will be necessary.
	Restoration: The work areas will be restored when work is complete.
	Coronation Park Dog Off Leash Area (DOLA): A half-day closure may be required to install and remove the work zone inside the DOLA.

ABOUT COVID-19 AND CONSTRUCTION WORK IN TORONTO

During construction, the contractor is responsible for the Health & Safety on site under the Ontario Occupational Health and Safety Act and is expected to implement COVID-19 mitigation practices. For more information on the City's response to COVID-19 please visit toronto.ca/covid-19.

NEED MORE INFORMATION?

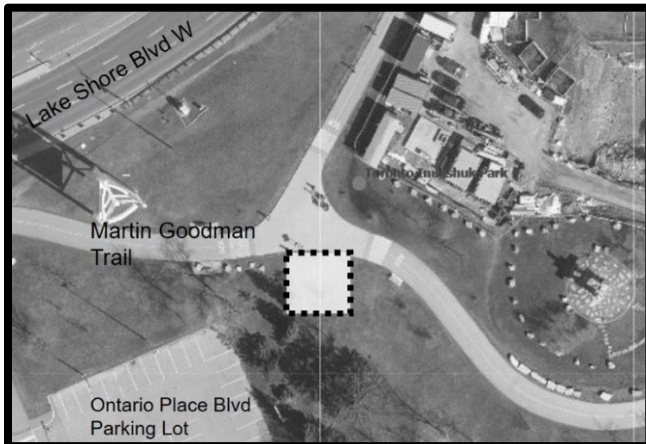
If you have questions about the upcoming work, please contact us and quote **9117-20-7024**.

Point of Contact	Information
Project Manager	Caroline Kaars Sijpesteijn, caroline.kaarssijpesteijn@toronto.ca , 416-338-7052
TTY Hearing Impaired Service	416-338-0889 (Daily, 8 a.m. to 5 p.m., closed holidays)
General inquiries	311
Website	toronto.ca/drcw-project

Thank you for your patience. Building a great city takes time. Better infrastructure for all of us is worth the wait.

MAPS OF WORK AREAS

Inukshuk Park



Coronation Park – Dog Off Leah Area
(southwest view)



Music Garden Park at Dan Leckie Way

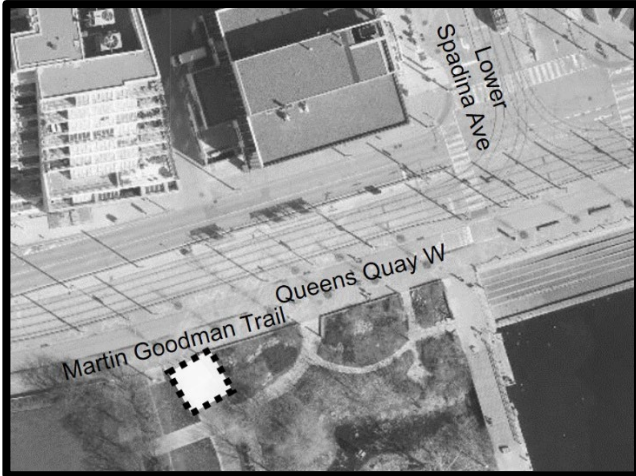


Bathurst St & Queens Quay Parking Lot

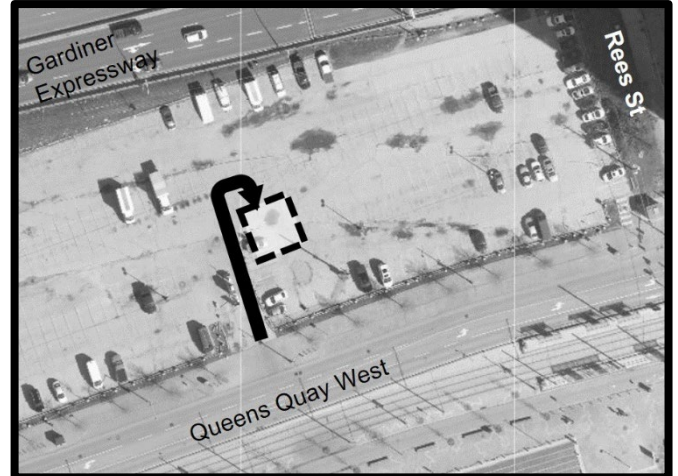


MAPS OF WORK AREAS

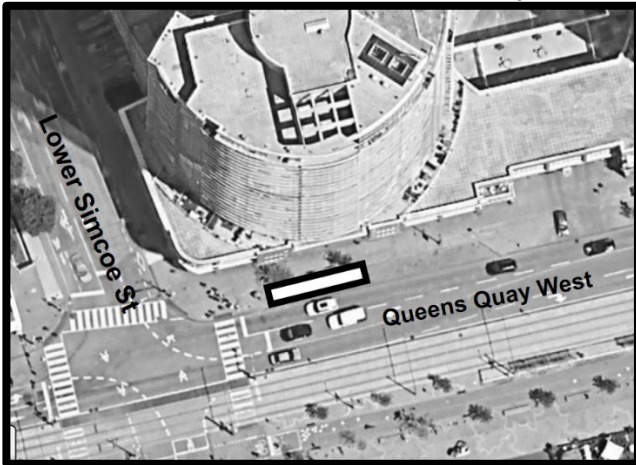
Music Garden Park at Lower Spadina



Rees Street Parking Lot



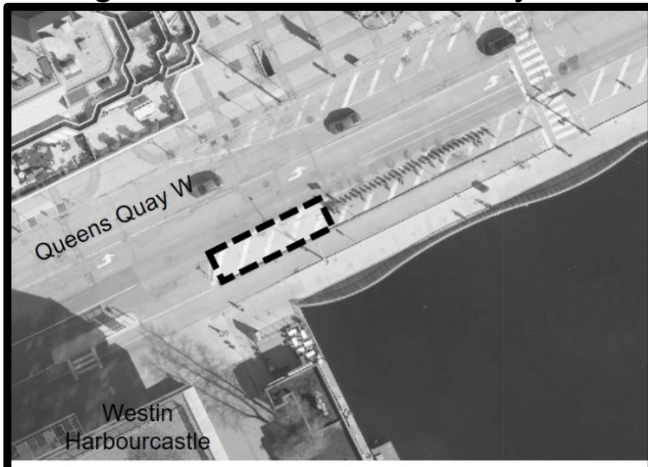
Lower Simcoe & Queens Quay West



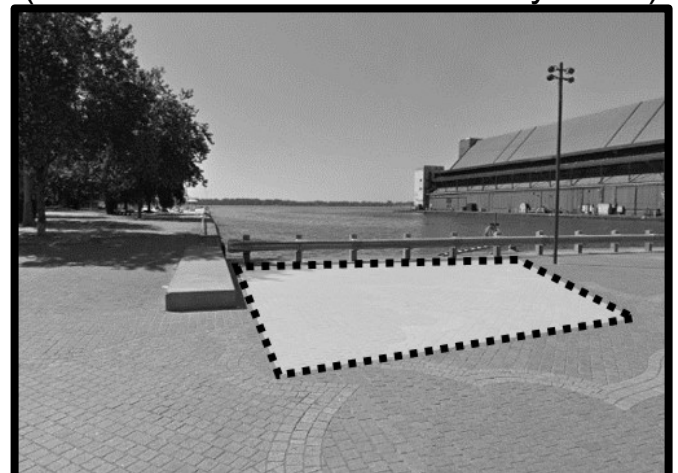
Lower Simcoe & Queens Quay West
(northeast view)



Yonge Street & Queens Quay West

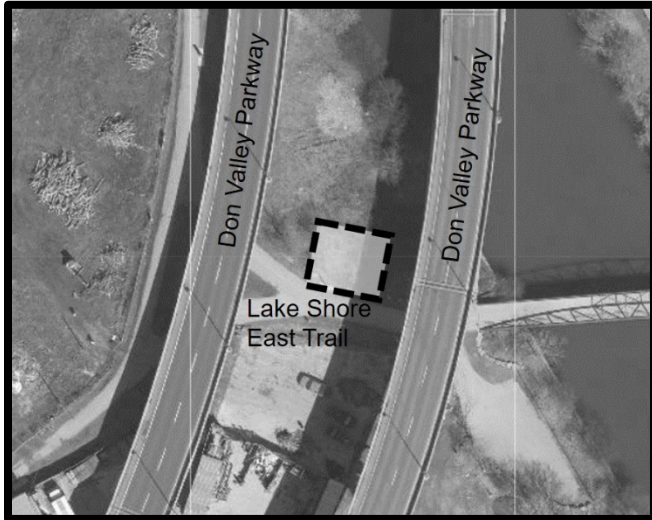


Sugar Beach
(south view from Queens Quay West)



MAPS OF WORK AREAS

Lower Don Trail at Don Valley Parkway
(location corrected)



Keating Railyard (Don Roadway &
Lakeshore Blvd East)

