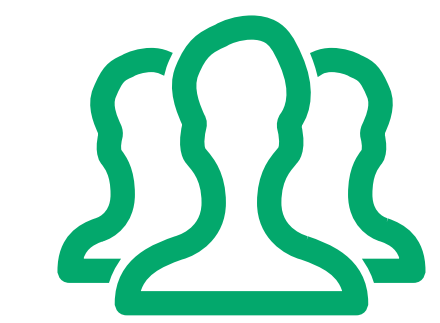


Centennial Park

OPEN HOUSE MAY 25TH, 2021

LAND ACKNOWLEDGMENT

AGENDA



6:00 pm - Introductions, Opening Remarks from Councillor



6:15 pm - Screening of video by PROCESS



6:20 pm - Master Plan Update Overview



6:30 pm - Breakout Rooms

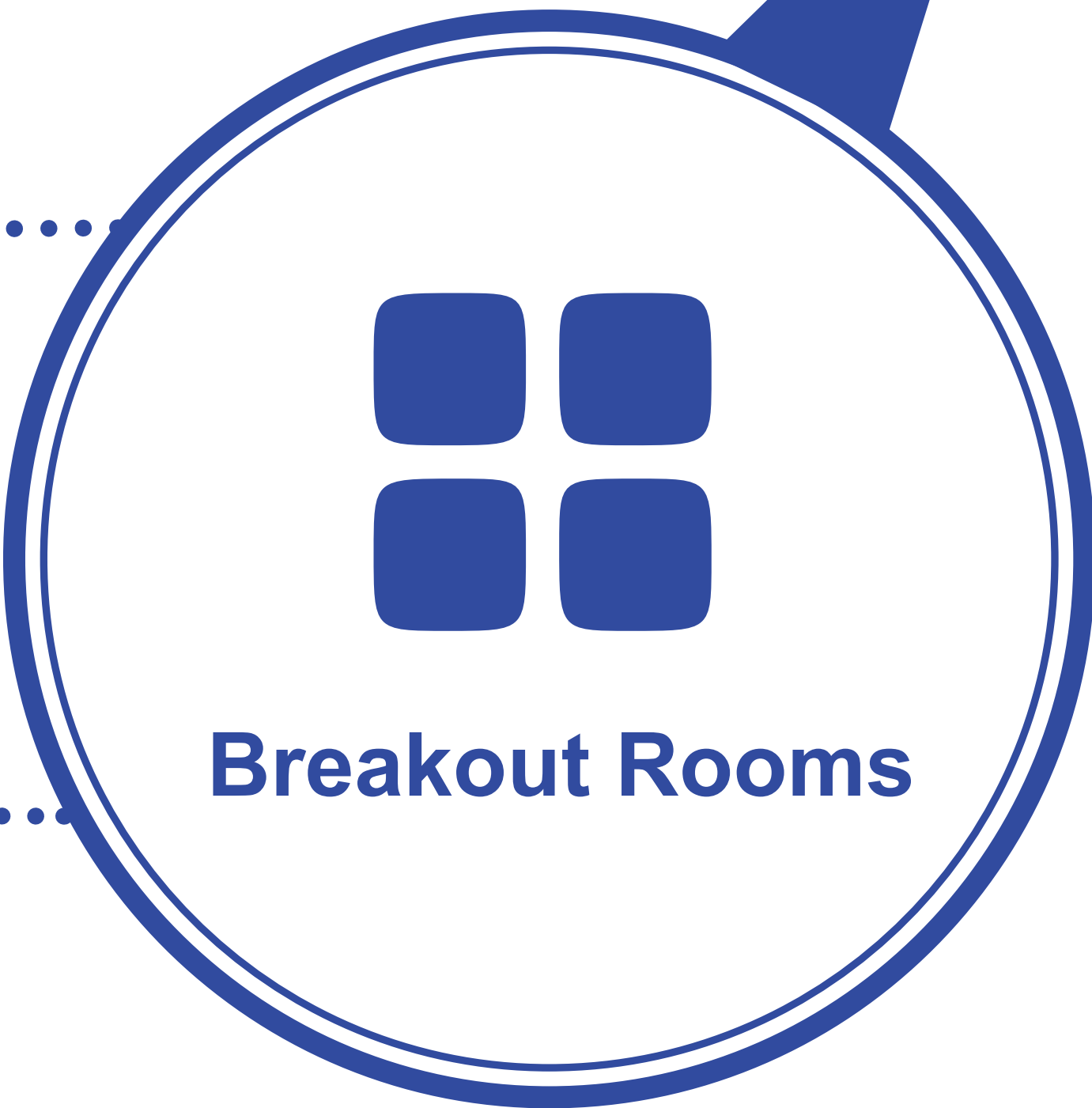
**thank
you!**

7:50 pm - Closing Remarks

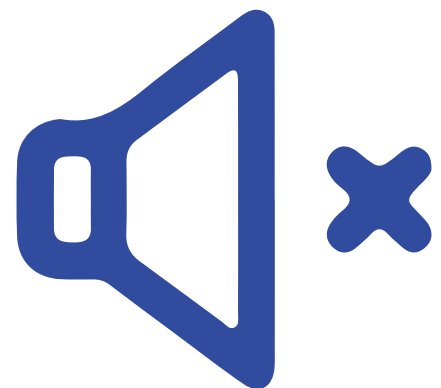
CENTENNIAL PARK MASTER PLAN UPDATE



Access the breakout rooms by clicking this button at the bottom of your Zoom screen



Use the chat feature to ask questions or provide comments to the facilitators

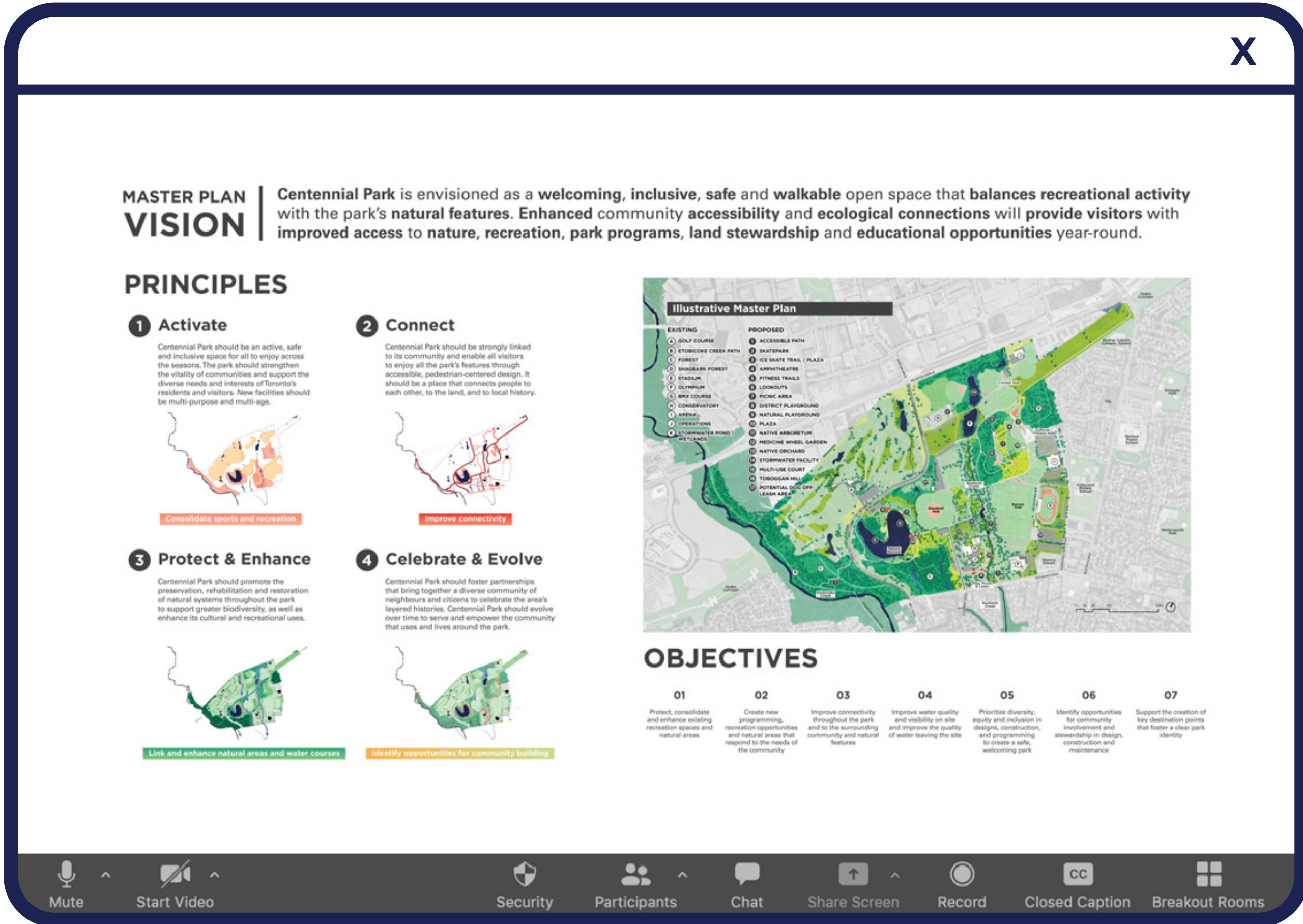


Mute your microphone when not speaking



Computer or audio issues? Return to the main room so we can help

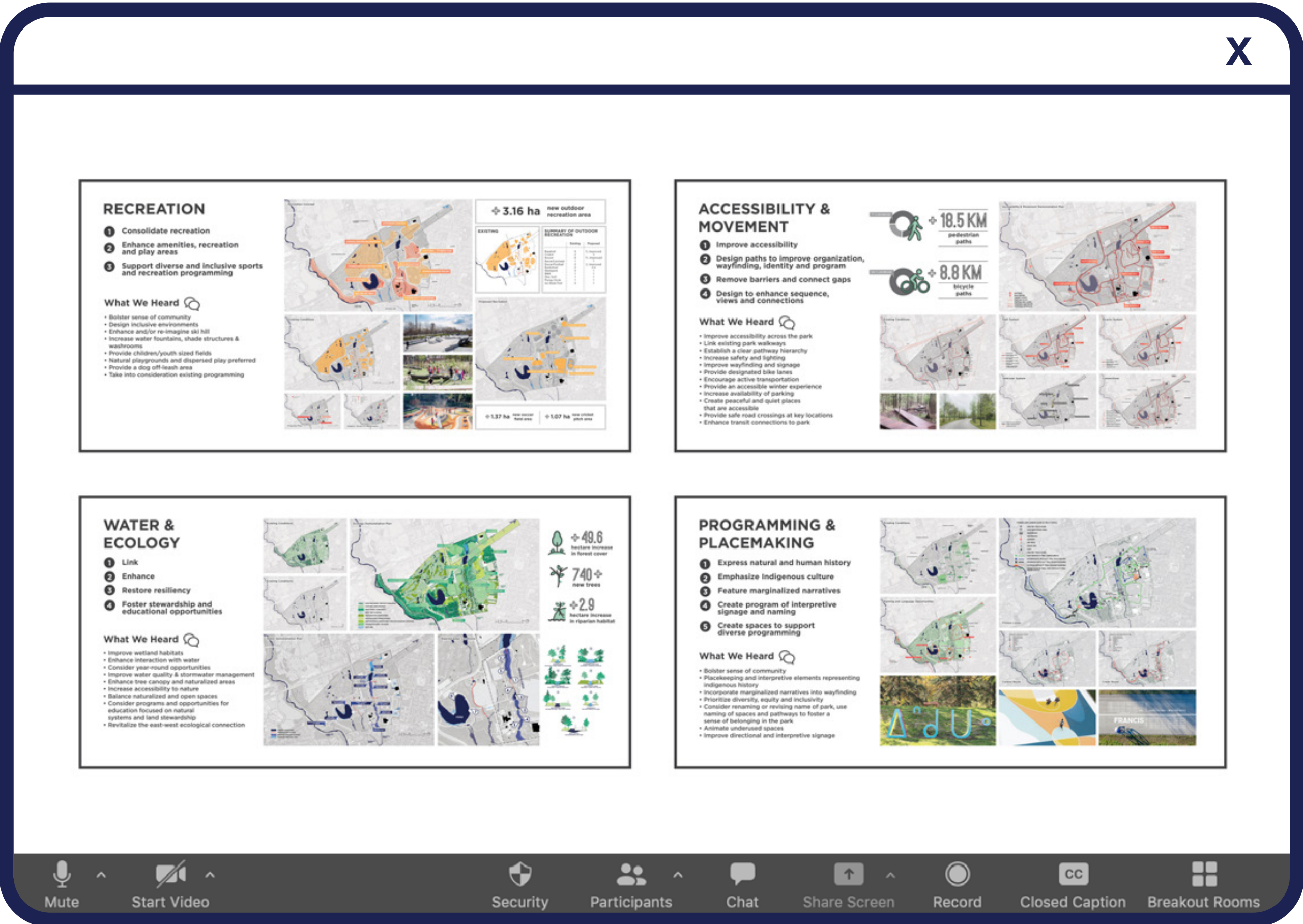
CENTENNIAL PARK MASTER PLAN UPDATE



MAIN ROOM

MASTER PLAN OVERVIEW

Overview of overall vision, guiding principles and objectives



BREAKOUT ROOM #1

SITE WIDE STRATEGIES

Details of proposed site-wide strategies and recommendations



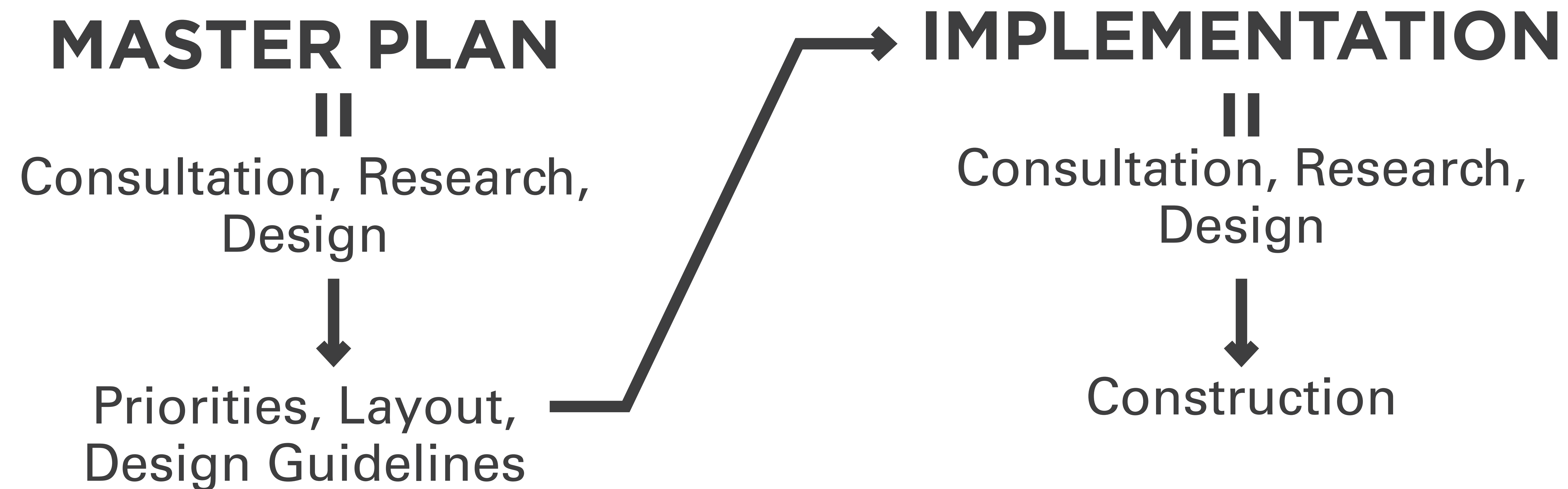
BREAKOUT ROOM #2

DEMONSTRATION PLANS

Details of three demonstration areas

WHAT IS A PARK MASTER PLAN?

A **park master plan** is a dynamic and long-term planning document that provides a vision, objectives and implementable action items to guide decision making for the ongoing improvements and management of parks.



FACILITIES MASTER PLANS

PARKS FACILITIES MASTER PLAN, 2019 (FMP)

The **FMP** looked at park facilities across Toronto from a service equity position, identifying areas that are under-served or over-served in terms of specific recreation facilities

CENTENNIAL PARK FACILITIES AND SERVICES PLANNING ASSESSMENT, 2020 (*CPFMP)

The **CPFMP** assessed the park facilities in Centennial Park within the larger framework of all City of Toronto Parks

MASTER PLAN VISION

Centennial Park is envisioned as a **welcoming, inclusive, safe and walkable** open space that **balances recreational activity** with the park’s **natural features**. **Enhanced community accessibility** and **ecological connections** will **provide visitors** with **improved access to nature, recreation, park programs, land stewardship and educational opportunities** year-round.

PRINCIPLES

1 Activate

Centennial Park should be an active, safe and inclusive space for all to enjoy across the seasons. The park should strengthen the vitality of communities and support the diverse needs and interests of Toronto’s residents and visitors. New facilities should be multi-purpose and multi-age.



Consolidate sports and recreation

2 Connect

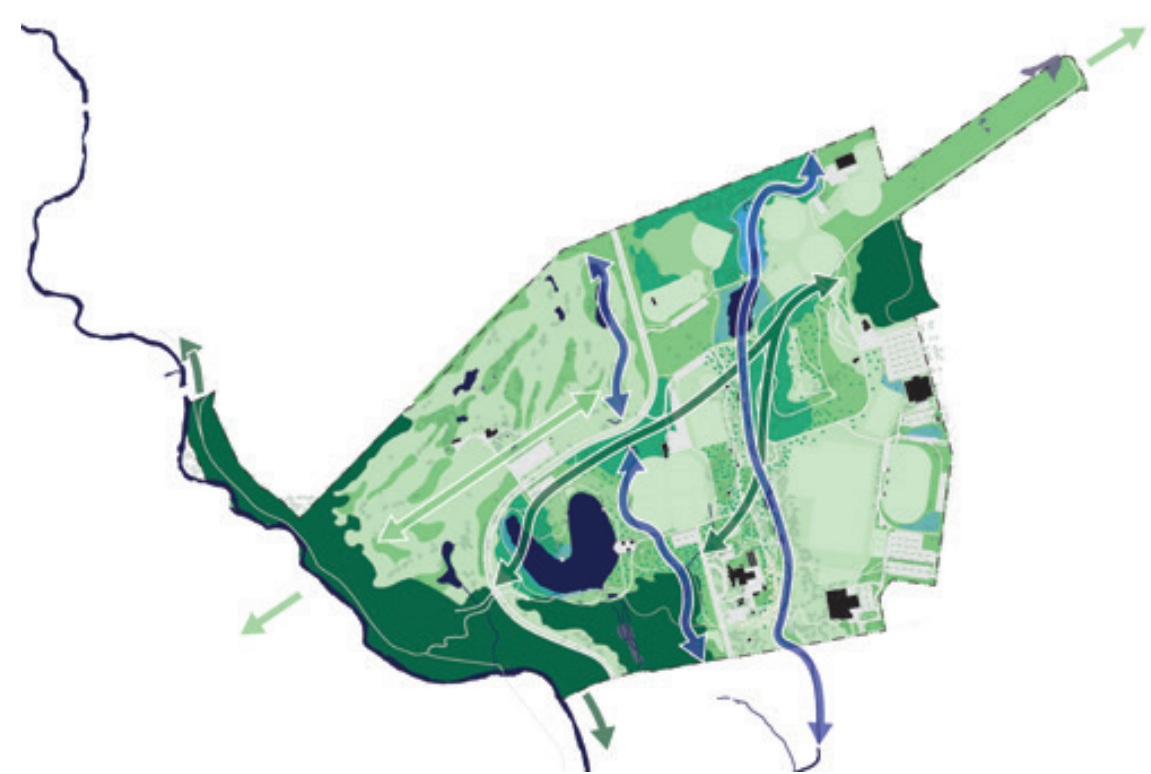
Centennial Park should be strongly linked to its community and enable all visitors to enjoy all the park’s features through accessible, pedestrian-centered design. It should be a place that connects people to each other, to the land, and to local history.



Improve connectivity

3 Protect & Enhance

Centennial Park should promote the preservation, rehabilitation and restoration of natural systems throughout the park to support greater biodiversity, as well as enhance its cultural and recreational uses.



Link and enhance natural areas and water courses

4 Celebrate & Evolve

Centennial Park should foster partnerships that bring together a diverse community of neighbours and citizens to celebrate the area’s layered histories. Centennial Park should evolve over time to serve and empower the community that uses and lives around the park.



Identify opportunities for community building



OBJECTIVES

01

Protect, consolidate and enhance existing recreation spaces and natural areas

02

Create new programming, recreation opportunities and natural areas that respond to the needs of the community

03

Improve connectivity throughout the park and to the surrounding community and natural features

04

Improve water quality and visibility on site and improve the quality of water leaving the site

05

Prioritize diversity, equity and inclusion in designs, construction, and programming to create a safe, welcoming park

06

Identify opportunities for community involvement and stewardship in design, construction and maintenance

07

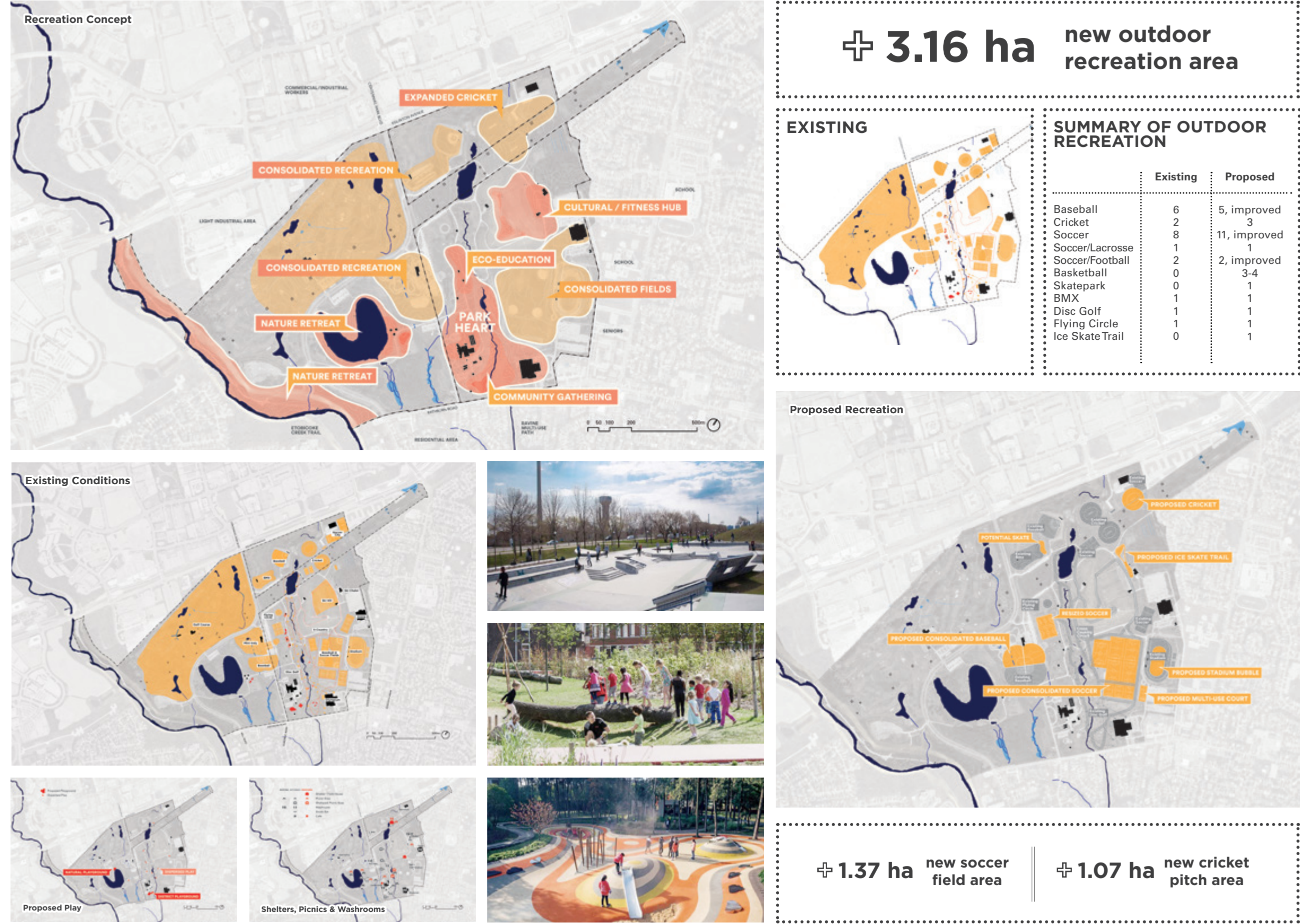
Support the creation of key destination points that foster a clear park identity

RECREATION

- 1 Consolidate recreation
- 2 Enhance amenities, recreation and play areas
- 3 Support diverse and inclusive sports and recreation programming

What We Heard

- Bolster sense of community
- Design inclusive environments
- Enhance and/or re-imagine ski hill
- Increase water fountains, shade structures & washrooms
- Provide children/youth sized fields
- Natural playgrounds and dispersed play preferred
- Provide a dog off-leash area
- Take into consideration existing programming

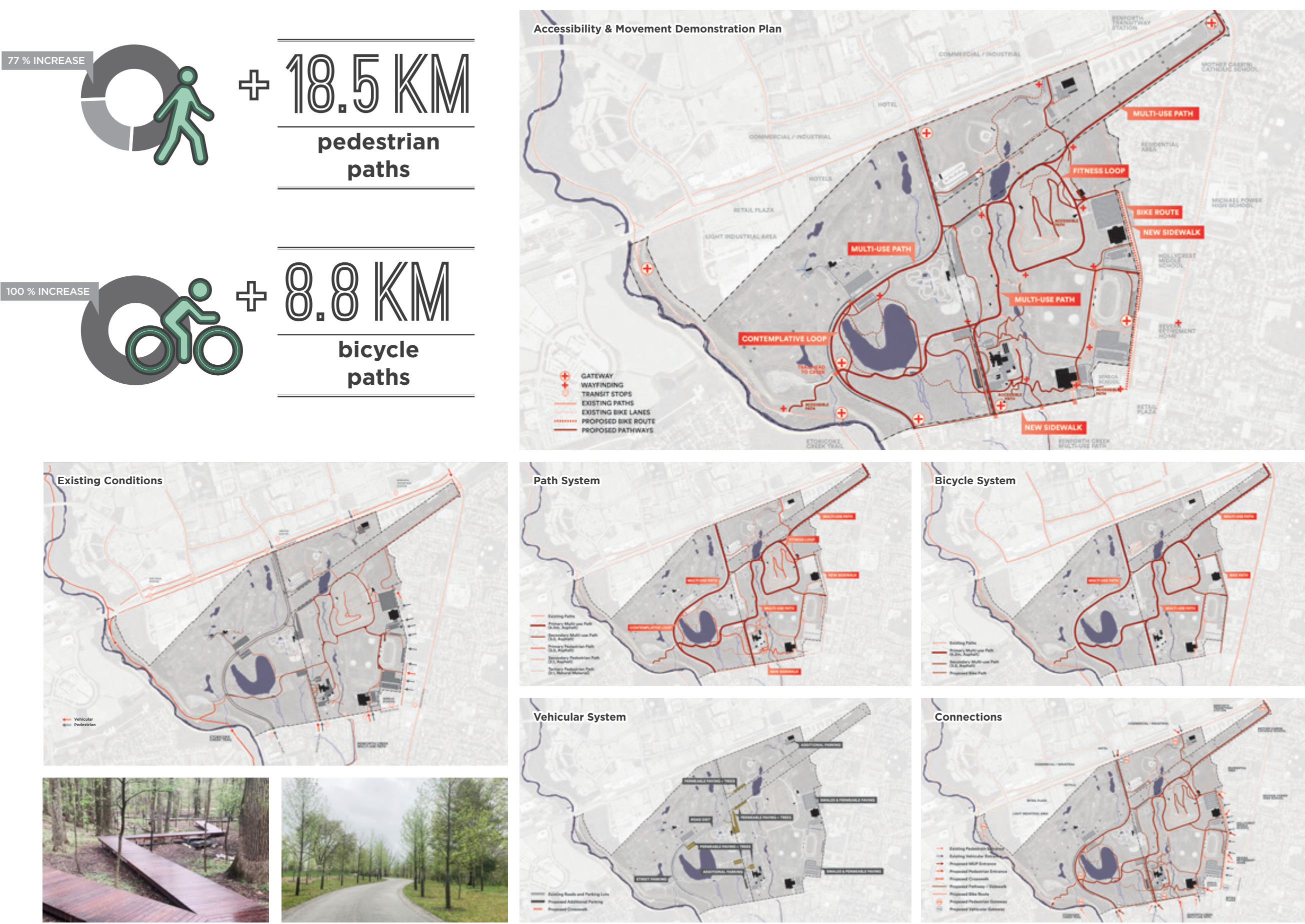


ACCESSIBILITY & MOVEMENT

- 1 Improve accessibility
- 2 Design paths to improve organization, wayfinding, identity and program
- 3 Remove barriers and connect gaps
- 4 Design to enhance sequence, views and connections

What We Heard

- Improve accessibility across the park
- Link existing park walkways
- Establish a clear pathway hierarchy
- Increase safety and lighting
- Improve wayfinding and signage
- Provide designated bike lanes
- Encourage active transportation
- Provide an accessible winter experience
- Increase availability of parking
- Create peaceful and quiet places that are accessible
- Provide safe road crossings at key locations
- Enhance transit connections to park

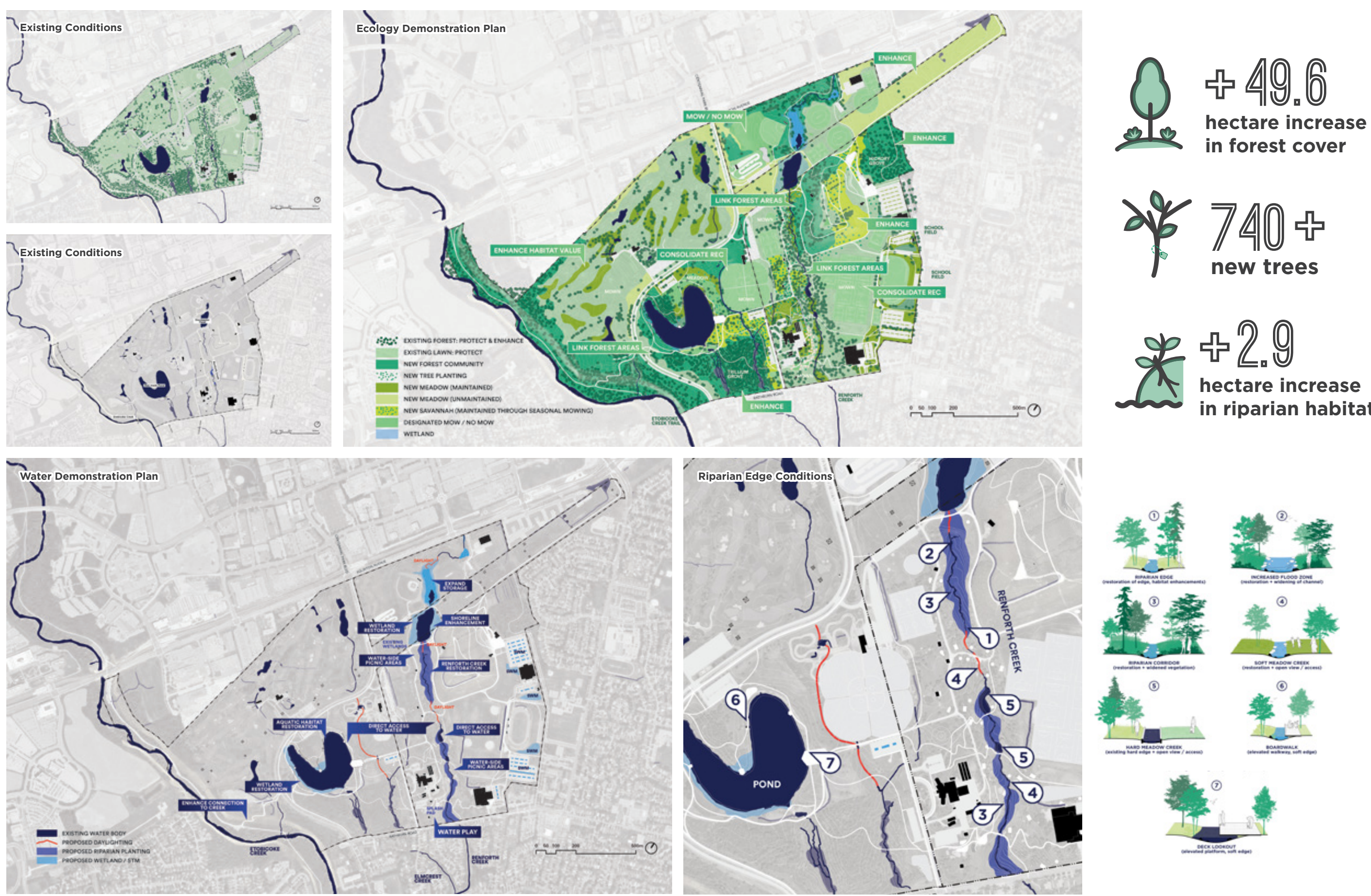


WATER & ECOLOGY

- 1 Link
- 2 Enhance
- 3 Restore resiliency
- 4 Foster stewardship and educational opportunities

What We Heard

- Improve wetland habitats
- Enhance interaction with water
- Consider year-round opportunities
- Improve water quality & stormwater management
- Enhance tree canopy and naturalized areas
- Increase accessibility to nature
- Balance naturalized and open spaces
- Consider programs and opportunities for education focused on natural systems and land stewardship
- Revitalize the east-west ecological connection



PROGRAMMING & PLACEMAKING

- 1 Express natural and human history
- 2 Emphasize Indigenous culture
- 3 Feature marginalized narratives
- 4 Create program of interpretive signage and naming
- 5 Create spaces to support diverse programming

What We Heard

- Bolster sense of community
- Placekeeping and interpretive elements representing indigenous history
- Incorporate marginalized narratives into wayfinding
- Prioritize diversity, equity and inclusivity
- Consider renaming or revising name of park, use naming of spaces and pathways to foster a sense of belonging in the park
- Animate underused spaces
- Improve directional and interpretive signage

