

Jane Finch Initiative

Youth Workshop #2

Phase 1 – May 28, 2021



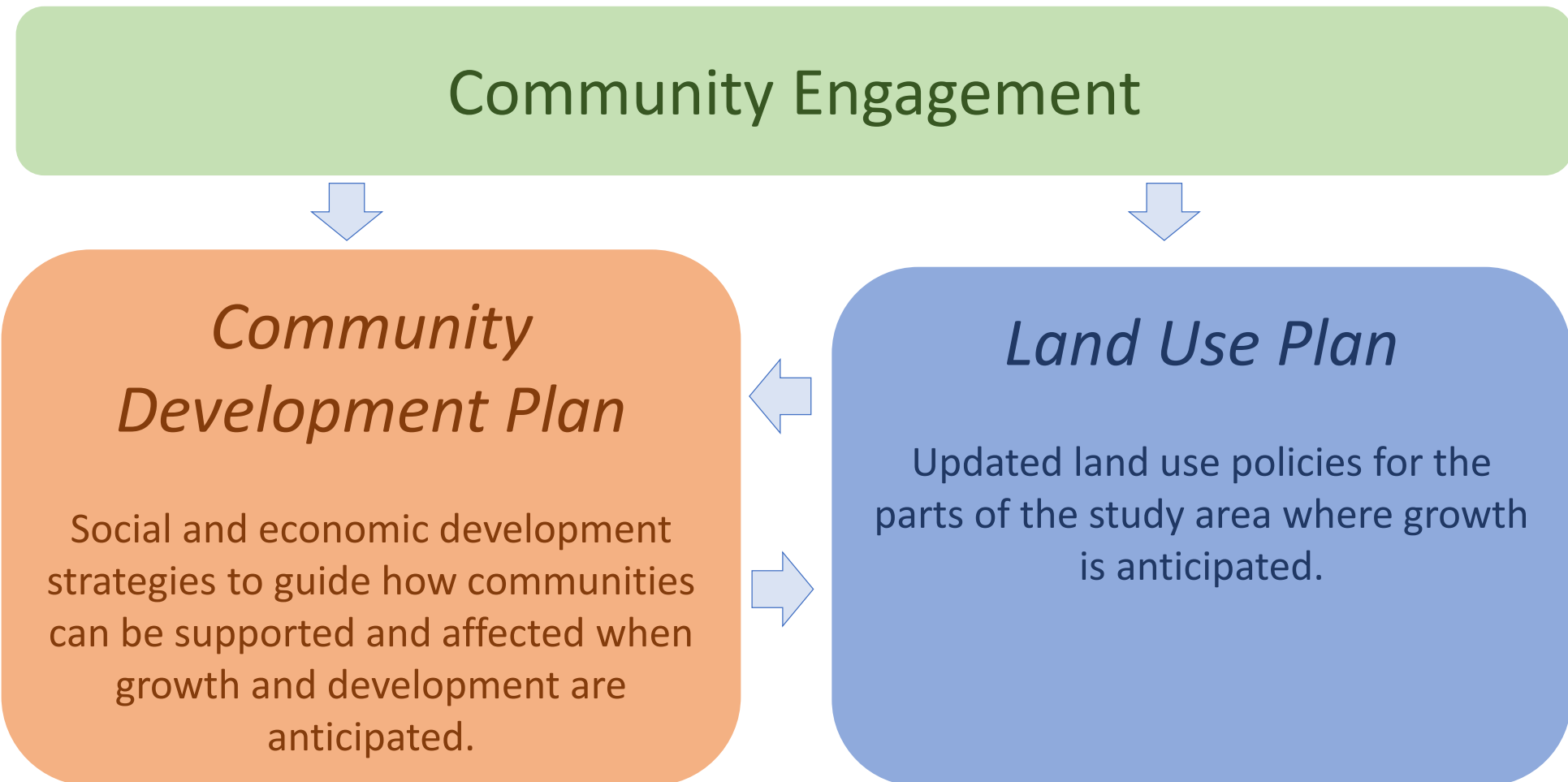


Why are we here?

Purpose: To share what we value about the area and to our vision for its future.

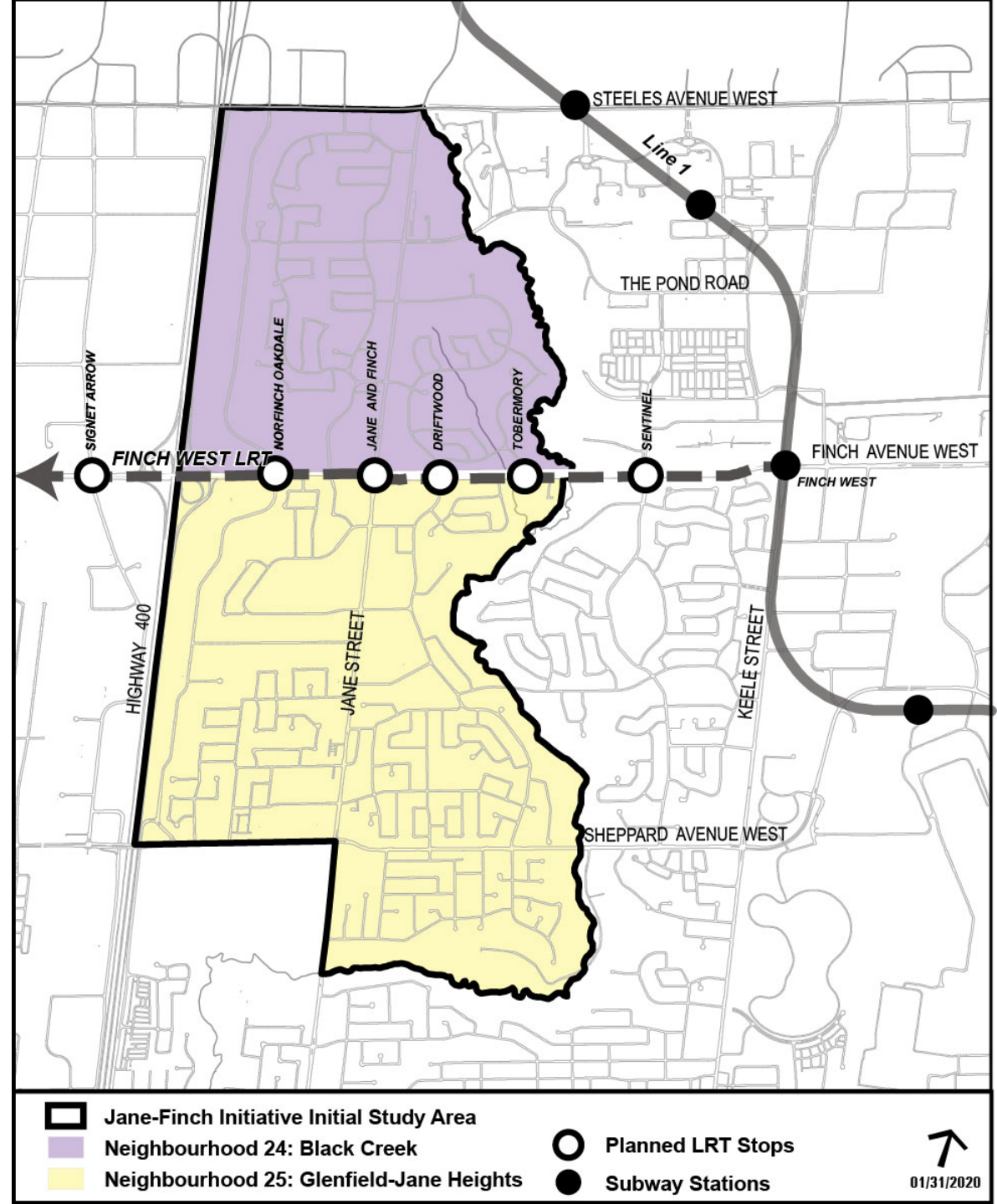
Outcome: Develop a draft vision statement and guiding principles for the Jane Finch Initiative based on what we hear tonight.

The Jane Finch Initiative

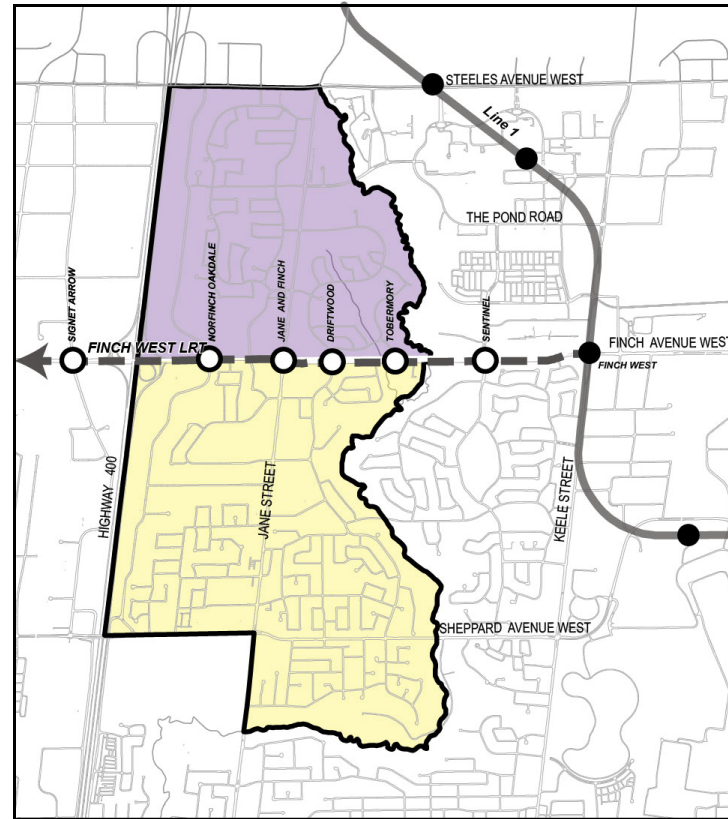
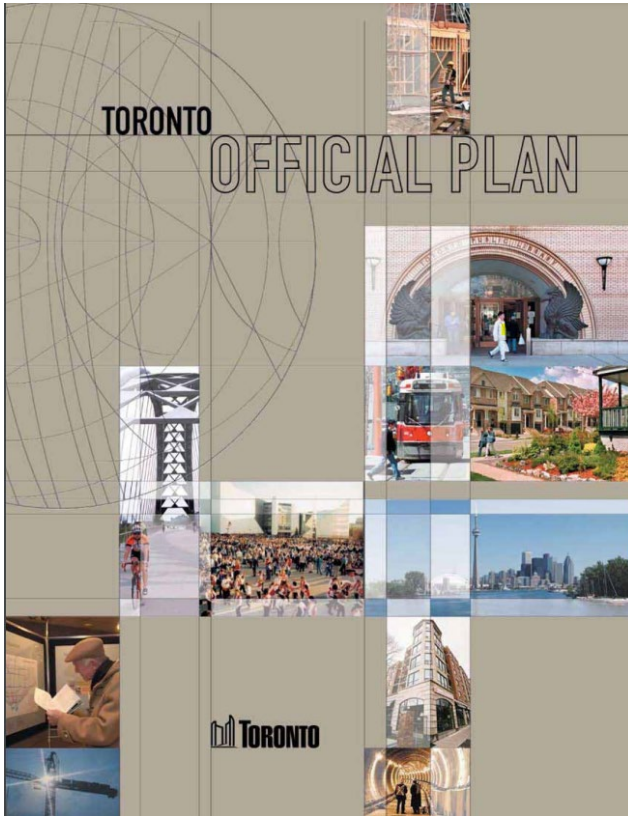


Study Area

- Neighbourhood 24: Black Creek
- Neighbourhood 25: Glenfield-Jane Heights
- New LRT Stops at Tobermory, Driftwood, Jane and Finch, and Norfinch Oakdale

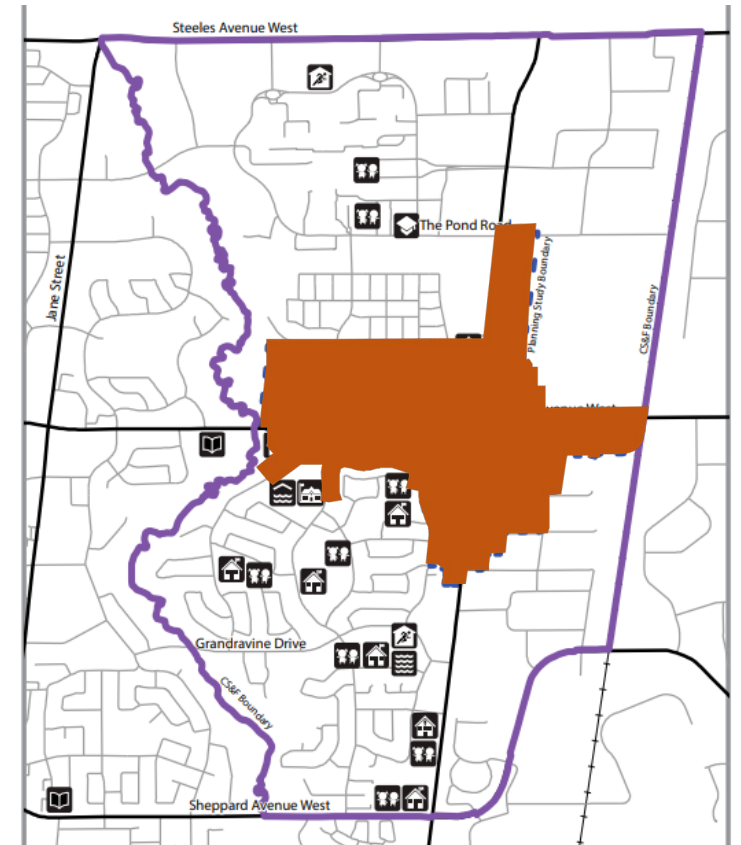


Land Use Plan Area will be smaller



Jane Finch Initiative

- Study Area
- Neighbourhood 24
- Neighbourhood 25



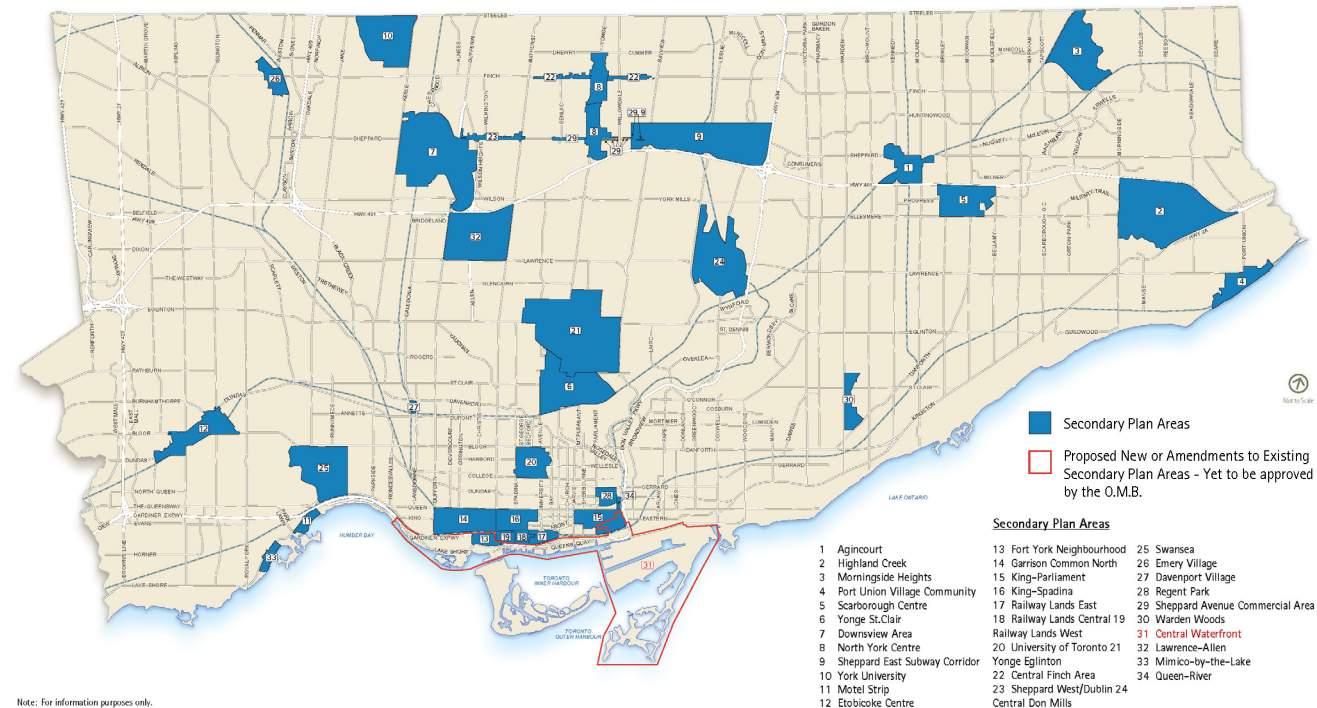
Keele Finch Plus

- Study Area
- Secondary Plan area

What does a Secondary Plan do?

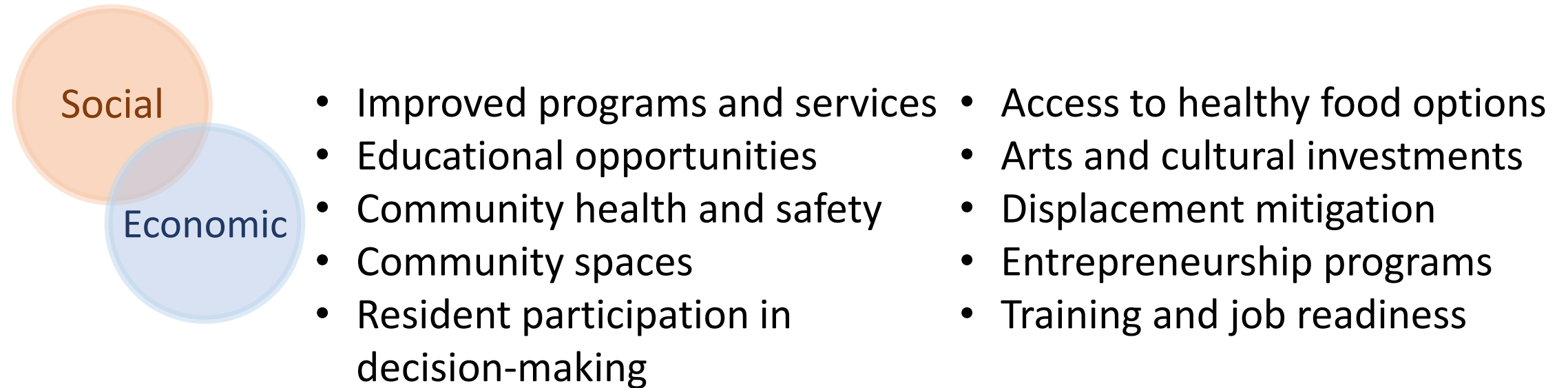
The new Secondary Plan for Jane and Finch will set policies to guide new development related to:

- Area Structure
- Land Use
- Public Realm
- Transportation
- Built Form and Development Criteria
- Housing
- Community Services & Facilities



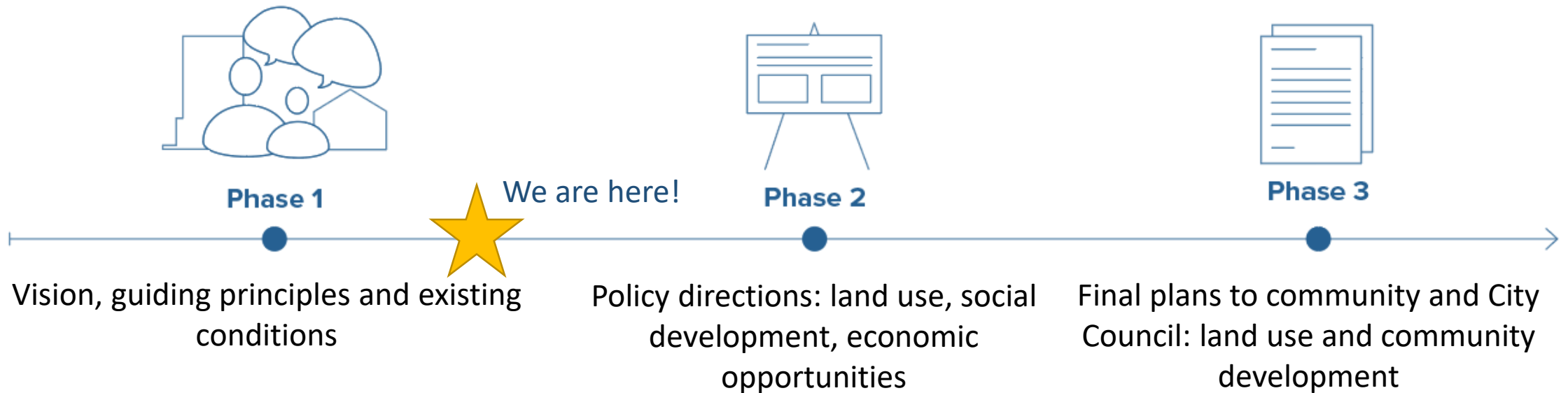
What does a Community Development Plan do?

The new Community Development Plan will focus on programs, partnerships and initiatives to increase social inclusion and economic opportunities for area residents. Shaped by community engagement, it could include:

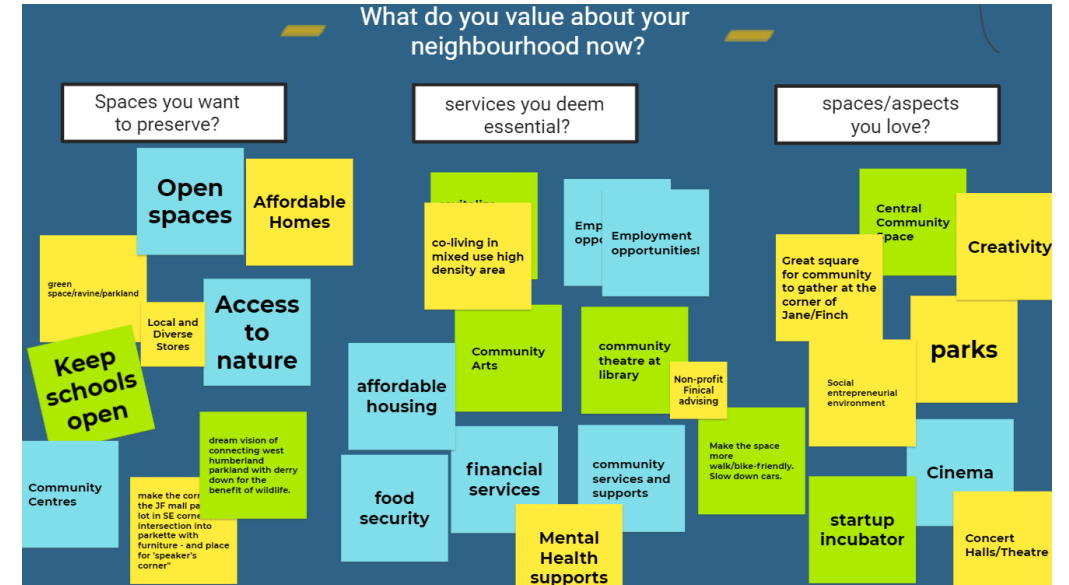


Timeline

What will the process look like?



Jane and Finch is:



Why Vision & Guiding Principles?

To develop the Community Development Plan and the Land Use Plan, we want to know:

1

What do you value about your neighbourhood now?

2

What is your vision for the future of the area?

Input from tonight's workshop will be developed into a draft Vision Statement and Guiding Principles that will help shape the land use planning work and the Community Development Plan over the next phases.

What Happens Next?

A draft Vision Statement and draft Guiding Principles will be circulated for input – help us get it right.

A summary of this meeting will be posted online at www.toronto.ca/janefinch

Establish the Community Advisory Committee

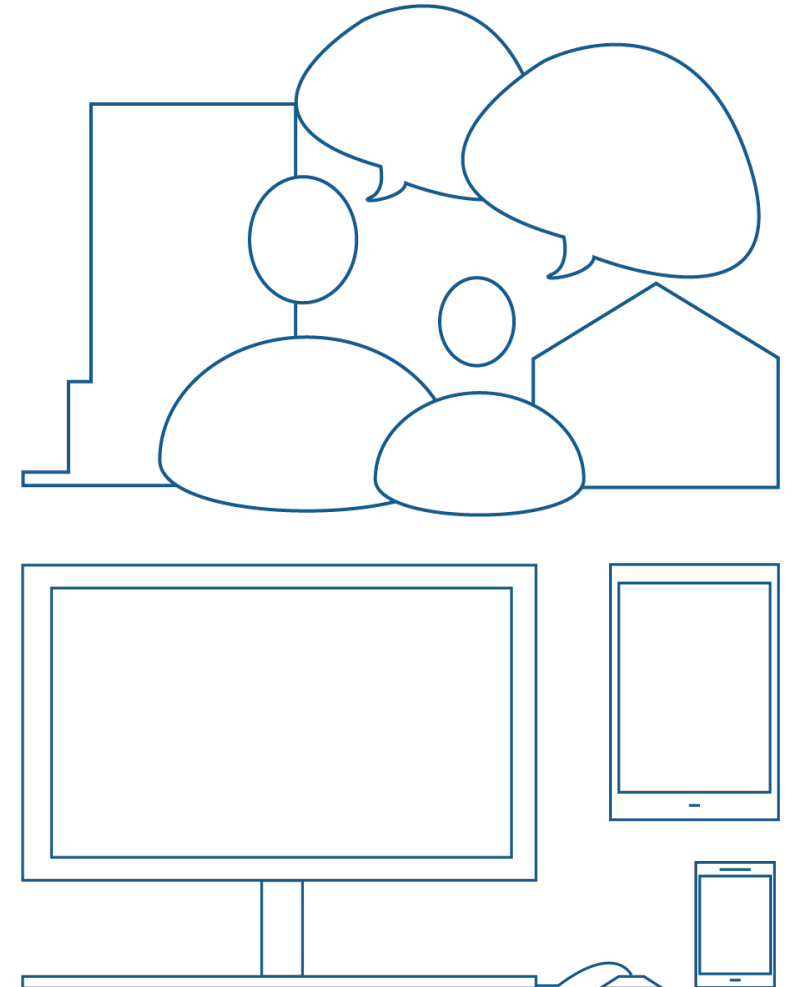
Community Advisory Committee

- The Community Advisory Committee is an opportunity to exchange ideas with your neighbours, and provide ongoing advice and feedback to the City of Toronto
- Members are asked to join for the duration of the Jane Finch Initiative and will be compensated for their time and expertise through honoraria
- To express your interest, fill in the Community Advisory Committee intake form or call 416-338-0775



Other ways to get involved

- Upcoming meetings over the next few months – details will be posted at toronto.ca/janefinch
- Email janefinch@toronto.ca or call **416-338-0775** anytime
- Visit our online engagement platform (via toronto.ca/janefinch)



Let's stay in touch!

Project Team

Email us any time at janefinch@toronto.ca
or call Zahra Joseph-Wilson at 416-338-0775

Berta Kaisr, Jane Finch Initiative Coordinator
bertak@janefinchcentre.org
416-663-2733, Extension: 317

Councillor Perruzza

416-338-5335
councillor_perruzza@toronto.ca