

August 26, 2021

## EMERGENCY REPAIR WORK East Don Sanitary Trunk Sewer

**Start Date: June 2021**

**Expected End Date for Repair\*: October 2021**

**Expected End Date for Restoration\*: Fall 2021**

*\*Timeline is subject to change.*

This notice is a follow-up to the May 31, 2021 Construction Notice Update #1 communication on details of emergency work the City of Toronto is undertaking. The original expected end date of repair has changed from August 2021 to October 2021 due to the complexities of the worksite and structural repairs to the sewer. The East Don Sanitary Trunk Sewer had structural damage and required emergency repair work to protect the infrastructure from possible failure. The City's contractor has replaced a damaged portion of the sewer, and is now working on additional repairs to further protect the sanitary trunk sewer.

The trunk sewer is located in the East Don Parkland adjacent to the Don River East Branch and the East Don Trail. The closest intersection is Finch Avenue East and Leslie Street, with the project location south of Finch Avenue East and west of Alamosa Drive.

For pedestrian safety during construction, the East Don Trail remains closed. We apologize for the inconvenience. Please **do not** enter the trail during construction. Traffic restrictions are also in place on Finch Avenue East near the entrance to the East Don Trail. **A map of the work area can be found on page 2 of this notice.**

### COVID-19 AND INFRASTRUCTURE WORK IN TORONTO

At this time, the Province of Ontario has allowed municipal construction to continue to ensure safe and reliable operations and/or provide new capacity in municipal infrastructure. The sewer maintenance work is essential to ensure the City's infrastructure remains safe, in a state of good repair and is able to meet Toronto's needs. During construction, the contractor is responsible for all aspects of health and safety on-site, as specified under Ontario's Occupational Health and Safety Act (OHSA), which includes implementing COVID-19 mitigation practices. For more information on the City's response to COVID-19, please visit [toronto.ca/covid-19](https://toronto.ca/covid-19).

City of Toronto contractors must adhere to guidelines issued by public health authorities, e.g. physical distancing, and the Province of Ontario, to help stop the spread of COVID-19. For more information on these guidelines, please visit: [ontario.ca/page/construction-site-health-and-safety-during-covid-19](https://ontario.ca/page/construction-site-health-and-safety-during-covid-19)

### WORK DETAILS

In order to complete the emergency repair work, crews will:



- Continued closure of the East Don Trail walking path/trail from the entrance on the south side of Finch Avenue East to the entrance through Alamosa Park near Alamosa Drive and Gatehead Road. This closure is required for pedestrian safety during construction.
- Short-term closures of the eastbound curb lane of Finch Avenue East surrounding the entrance to the East Don Trail. These closures are required for equipment staging and deliveries and are intermittent.
- Remove equipment and material at the site prior to restoration.
- Restore the surrounding vegetation, as needed, upon completion of work. All work will be done according to seasonal planting guidelines and is being carried out in consultation with Toronto and Region Conservation Authority (TRCA) and the City of Toronto's Parks, Forestry and Recreation division.

**Please note:** Toronto Water has retained a contractor to carry out immediate assessment and emergency work that will include sewer bypass, sewer replacement, sewer lining and soil stabilization.

### WHAT TO EXPECT DURING CONSTRUCTION

- You may experience dust, noise and other inconveniences. The City will make efforts to

reduce the impacts. We appreciate your patience.

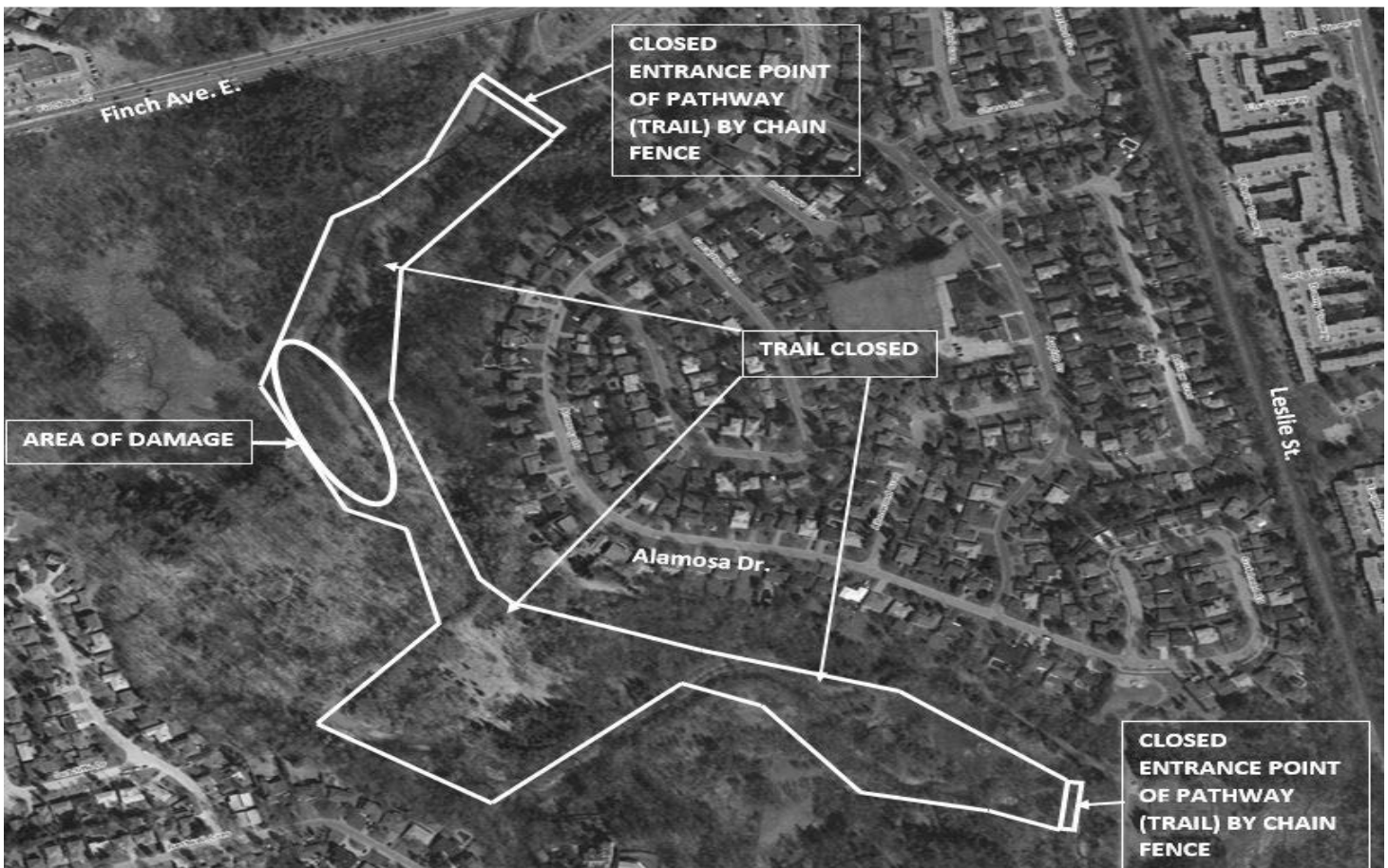
	<p><b>Work Hours:</b> Work will be completed in accordance with the City's Noise By-law predominately between 7:00 a.m. to 7:00 p.m., Monday to Friday, but also with work after hours, on weekends, and occasionally on a 24/7 basis.</p>
	<p><b>Pedestrian Access:</b> To complete the work safely, pedestrian restrictions will occur. The East Don River Trail will continue to be closed during the work from the north side (40 metres south of Finch Avenue East) toward south side at Alamosa Park. Temporary fencing and signs will be erected around the construction site to protect the public.</p>

**NEED MORE INFORMATION?**

If you have questions about the maintenance work, please contact the field ambassador.

<p><b>Field Ambassador</b></p>	<p>Adam Zietara, Manager, Toronto Water, 416-392-9334, <a href="mailto:Adam.Zietara@toronto.ca">Adam.Zietara@toronto.ca</a></p>
<p><b>General inquiries</b></p>	<p>3-1-1</p>
<p><b>TTY Hearing Impaired Service</b></p>	<p>416-338-0889 (7 Days a week, 8:00 am – 5:00 pm, closed holidays)</p>
<p><b>Website</b></p>	<p><a href="http://www.toronto.ca/donvalleynorth">www.toronto.ca/donvalleynorth</a></p>

**MAP OF WORK AREA**



Thank you for your patience. Building a great city takes time. Better infrastructure for all of us is worth the wait.