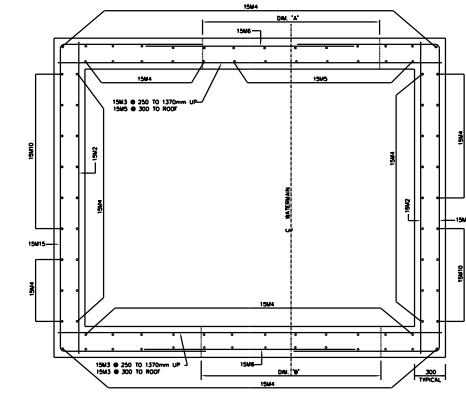
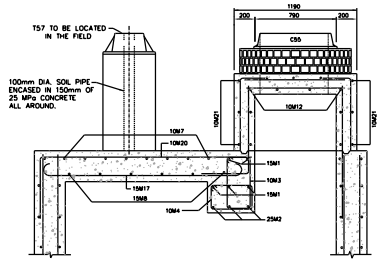


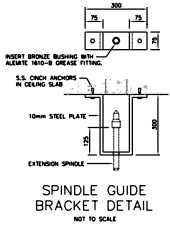
PLAN



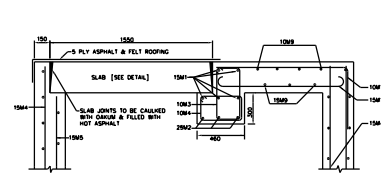
WALL SECTION



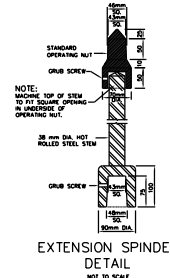
SECTION C-C



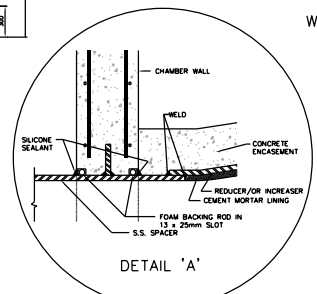
SPINDLE GUIDE BRACKET DETAIL



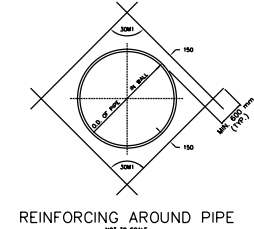
SECTION D-D



EXTENSION SPINDEL DETAIL



DETAIL 'A'



REINFORCING AROUND PIPE

CHAMBER No.	DM. 'A'	DM. 'B'	DM. 'C'	DM. 'D'	DM. 'E'

- NOTES:
- 25MPa CONCRETE TO BE USED EXCEPT AS NOTED.
 - MAXIMUM SIZE OF COARSE AGGREGATE TO BE 20mm.
 - COVER TO MAIN REINFORCEMENT TO BE 50mm OR AS INDICATED.
 - ALL BAR DIMENSIONS ARE OUT TO OUT.
 - ALL BAR TYPES ARE OUT TO OUT.
 - BARS TO BE BENT COLD, MINIMUM INSIDE RADIUS 3x DIAMETERS.
 - ALL CROSSING BARS TO BE WELL WIRED.
 - ALL REINFORCING STEEL TO BE DEFORMED BULLET-STEEL BARS GRADE 300S, CONFORMING TO C.S.A. STANDARD C30.12M.
 - ALL LAPS IN REINFORCING STEEL TO BE AT LEAST 30 DIAMETERS IN LENGTH OR AS SHOWN, AND TO BE STAGGERED.
 - ALL BRICKWORK TO BE OF HIGH QUALITY HARD SEWER BRICK, LAD IN FULL MORTAR BED AND JOINTS, PARGED INSIDE AND OUT.
 - WATERSTOP (PVC) TO BE PROVIDED AT ALL CONSTRUCTION JOINTS.
 - WHERE NECESSARY ADJUST REINFORCING STEEL TO SUIT WATERSTOPS AND OPENINGS.
 - PROVIDE SUMP PIT WITH GRATING AND SLOPE FLOOR TO SLUMP 10mm/METRE.
 - DRAIN OUTLET TO BE LOCATED AT NEAREST POINT TO EXISTING SEWER. IF NECESSARY ADJUST REINFORCING STEEL TO SUIT. SEWER IS TO BE CLAMPED TO THE WALL BY AN APPROVED METHOD. IF NO SEWER IS AVAILABLE DELETE DRAIN TYPE 'A' AND CONSTRUCT DRAIN TYPE 'B' AND INSTALL PIPE WITH STOPPER AS SHOWN ON DWG.
 - DRAIN CONNECTION TO SEWER TO BE MADE BY CONTRACTOR UNLESS OTHERWISE STATED IN THE GENERAL SPECIFICATIONS.
 - LADDERS, GRATINGS AND RAILINGS TO BE ALUMINUM AND OF REMOVABLE TYPE WITH STAINLESS STEEL BOLTS.
 - TOP TWO STEPS AND ANY ADDITIONAL STEPS IN THE CHIMNEY TO BE OF THE REMOVABLE TYPE.
 - CHAMBERS DEEPER THAN 1200mm FROM SURFACE ELEVATION TO TOP OF VALVE OPERATING SPINDLE SHALL HAVE EXTENSION SPINDLE AND GUIDE BRACKET.
 - ALL ALUMINUM SURFACES CONTACTING CONCRETE TO RECEIVE ONE COAT OF BUTYRUSOLIC PRIMER.
 - 'X' DEPENDS ON HEIGHT (H) & BARS SHALL BE COUNTED TO ENSURE THAT THE BOTTOM BAR IS LESS THAN 150mm ABOVE THE ROOF CHAMBER.

BENDING SCHEDULE

BAR No.	DA	LENGTH	a	b	c	d	SHAPE	O.C.	NO. REQD.
10M1	10	900	230	230	230	230		300	7
10M2	10	700	100	230	230	230		300	8
10M3	10	840	530	230	520	230		300	19
10M4	10	1380	380	230	280	230		300	18
10M5	10	770	100	230	230	230		300	8
10M6	10	1425	100	230	230	230		300	8
10M7	10	1080	230	230	230	230		300	8
10M8	10	2200	230	230	230	230		300	5
10M9	H-100	H-100	H-100	H-100	H-100	H-100		300	4
10M10	H-100	H-100	H-100	H-100	H-100	H-100		300	5
10M11	614	614	614	614	614	614		300	2
10M12	1000	1000	1000	1000	1000	1000		300	2
10M13	1000	1000	1000	1000	1000	1000		300	2
10M14	1000	1000	1000	1000	1000	1000		300	2
10M15	830	1300	550	550	550	550		300	8
10M16	H-830	H-830	H-830	H-830	H-830	H-830		300	8
10M17	H-180	H-180	H-180	H-180	H-180	H-180		300	5
10M18	H-144	H-144	H-144	H-144	H-144	H-144		300	5
10M19	2400	2400	2400	2400	2400	2400		300	2
10M20	2850	800	1080	800	800	800		300	2
10M21	4500	550	3000	800	800	800		300	2
10M22	3700	3700	3700	3700	3700	3700		300	2
10M23	3000	3000	3000	3000	3000	3000		300	2
10M24	2700	2700	2700	2700	2700	2700		300	2
10M25	2400	2400	2400	2400	2400	2400		300	2
10M26	1800	1800	1800	1800	1800	1800		300	2
10M27	2700	2700	2700	2700	2700	2700		300	2
10M28	2700	2700	2700	2700	2700	2700		300	2
10M29	2700	2700	2700	2700	2700	2700		300	2
10M30	2700	2700	2700	2700	2700	2700		300	2
10M31	2700	2700	2700	2700	2700	2700		300	2
10M32	2700	2700	2700	2700	2700	2700		300	2
10M33	2700	2700	2700	2700	2700	2700		300	2
10M34	2700	2700	2700	2700	2700	2700		300	2
10M35	2700	2700	2700	2700	2700	2700		300	2
10M36	2700	2700	2700	2700	2700	2700		300	2
10M37	2700	2700	2700	2700	2700	2700		300	2
10M38	2700	2700	2700	2700	2700	2700		300	2
10M39	2700	2700	2700	2700	2700	2700		300	2
10M40	2700	2700	2700	2700	2700	2700		300	2
10M41	2700	2700	2700	2700	2700	2700		300	2
10M42	2700	2700	2700	2700	2700	2700		300	2
10M43	2700	2700	2700	2700	2700	2700		300	2
10M44	2700	2700	2700	2700	2700	2700		300	2
10M45	2700	2700	2700	2700	2700	2700		300	2
10M46	2700	2700	2700	2700	2700	2700		300	2
10M47	2700	2700	2700	2700	2700	2700		300	2
10M48	2700	2700	2700	2700	2700	2700		300	2
10M49	2700	2700	2700	2700	2700	2700		300	2
10M50	2700	2700	2700	2700	2700	2700		300	2
10M51	2700	2700	2700	2700	2700	2700		300	2
10M52	2700	2700	2700	2700	2700	2700		300	2
10M53	2700	2700	2700	2700	2700	2700		300	2
10M54	2700	2700	2700	2700	2700	2700		300	2
10M55	2700	2700	2700	2700	2700	2700		300	2
10M56	2700	2700	2700	2700	2700	2700		300	2
10M57	2700	2700	2700	2700	2700	2700		300	2
10M58	2700	2700	2700	2700	2700	2700		300	2
10M59	2700	2700	2700	2700	2700	2700		300	2
10M60	2700	2700	2700	2700	2700	2700		300	2
10M61	2700	2700	2700	2700	2700	2700		300	2
10M62	2700	2700	2700	2700	2700	2700		300	2
10M63	2700	2700	2700	2700	2700	2700		300	2
10M64	2700	2700	2700	2700	2700	2700		300	2
10M65	2700	2700	2700	2700	2700	2700		300	2
10M66	2700	2700	2700	2700	2700	2700		300	2
10M67	2700	2700	2700	2700	2700	2700		300	2
10M68	2700	2700	2700	2700	2700	2700		300	2
10M69	2700	2700	2700	2700	2700	2700		300	2
10M70	2700	2700	2700	2700	2700	2700		300	2
10M71	2700	2700	2700	2700	2700	2700		300	2
10M72	2700	2700	2700	2700	2700	2700		300	2
10M73	2700	2700	2700	2700	2700	2700		300	2
10M74	2700	2700	2700	2700	2700	2700		300	2
10M75	2700	2700	2700	2700	2700	2700		300	2
10M76	2700	2700	2700	2700	2700	2700		300	2
10M77	2700	2700	2700	2700	2700	2700		300	2
10M78	2700	2700	2700	2700	2700	2700		300	2
10M79	2700	2700	2700	2700	2700	2700		300	2
10M80	2700	2700	2700	2700	2700	2700		300	2
10M81	2700	2700	2700	2700	2700	2700		300	2
10M82	2700	2700	2700	2700	2700	2700		300	2
10M83	2700	2700	2700	2700	2700	2700		300	2
10M84	2700	2700	2700	2700	2700	2700		300	2
10M85	2700	2700	2700	2700	2700	2700		300	2
10M86	2700	2700	2700	2700	2700	2700		300	2
10M87	2700	2700	2700	2700	2700	2700		300	2
10M88	2700	2700	2700	2700	2700	2700		300	2
10M89	2700	2700	2700	2700	2700	2700		300	2
10M90	2700	2700	2700	2700	2700	2700		300	2
10M91	2700	2700	2700	2700	2700	2700		300	2
10M92	2700	2700	2700	2700	2700	2700		300	2
10M93	2700	2700	2700	2700	2700	2700		300	2
10M94	2700	2700	2700	2700	2700	2700		300	2
10M95	2700	2700	2700	2700	2700	2700		300	2
10M96	2700	2700	2700	2700	2700	2700		300	2