

Wabash Community Recreation Centre

Phase 3 - Site Design Options

Community Resource Group Meeting 2 of 2
Tuesday, June 8, 2021



Land Acknowledgement

I'd like to begin by honouring the land that I'm on. If you are not currently in Toronto, I encourage you to learn about the lands you're on.

We acknowledge the land we are meeting on is the traditional territory of many nations including the Mississaugas of the Credit, the Anishnabeg, the Chippewa, the Haudenosaunee and the Wendat peoples and is now home to many diverse First Nations, Inuit and Métis peoples. We also acknowledge that Toronto is covered by Treaty 13 with the Mississaugas of the Credit.



Meeting Objectives

- To review and discuss the results of this phase of engagement
- To share next steps

The CRG - Your Role in the Process

- The CRG is an advisory group that provides guidance, constructive feedback & suggestions on proposed project approaches, concepts and materials
 - Operate using a consensus-based approach
 - Provide a sense of the broader community's reactions and concerns
 - Promote public consultation activities and events

Thank You!

Agenda



Welcome & Zoom tips



Presentation

- Project Review
- Engagement Review



Discussion



Next Steps

thank
you!

Adjourn

Tips for a Successful Virtual Meeting



Mute your microphone when not speaking.



Use the chat feature to ask questions. Or click the hand icon, beside your name from the participants list on the right.



One voice at a time. Be direct and frame questions to specific speakers.



Turn on your camera, if comfortable. Be mindful of your surroundings from a security and privacy standpoint.



Computer audio issues? Use your cell-phone for audio by clicking Audio Connection, Switch Connection, then Call Me.

Project Team

Capital Projects & Public Consultation (PF&R)

Doug Giles – Sr. Project Co-ordinator, Capital Projects
Alex Lavasidis – Sr. Consultation Coordinator
Daniel Fusca – Manager, Public Consultation

Recreation Leads (PF&R)

Cheryl MacDonald – Manager, Community Recreation
Ronda Murphy – Supervisor, Community Recreation
Maxwayne Christy – Programmer, Community Recreation
Paula Jacobi – Supervisor, Aquatics
Eric To – Manager, Aquatics

Consultant Team

Jarle Lovlin – Diamond Schmitt Architects
Marcin Sztaba – Diamond Schmitt Architects

Yulia Pak – Swerhun Inc. (Public Consultation)
Khly Lamparero – Swerhun Inc. (Public Consultation)

Introductions – CRG Members

CRG Members

City of Toronto Youth Outreach Worker - Felicia Gopaul

Friends of Sorauren Park - Kathy Allan & Joël Campbell

Garden Avenue P.S. Parent Council – Anne Gleeson & Haida Gebru

Mentoring Junior Kids Organization (MJKO Boxing) - Miranda Kamal

Parkdale Activity Recreation Centre (PARC) - Beryl-Ann Mark

Parkdale Residents Association - Ric Amis

Roncesvalles-Macdonell Residents Association - Mark Campbell & George Emerson

Sorauren Farmers' Market Association - Helen Acraman & Eric Lee

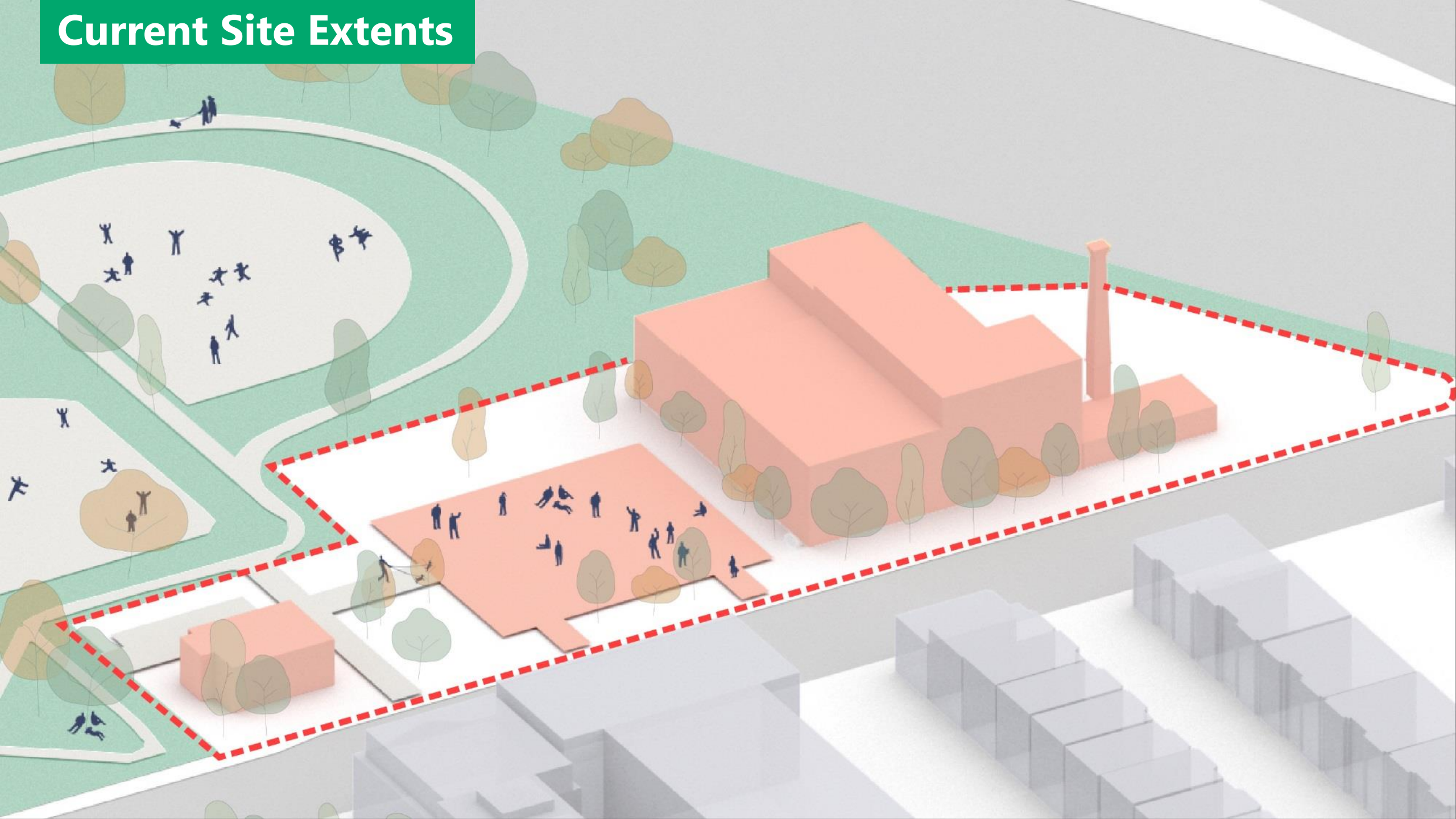
St. Vincent De Paul Elementary School - Dan Fisher

Parkdale Jr. / Sr. Public School - Migs Bartula & Jelena Zaric

Westlodge TCHC community - Cathy Gatlin

Project Overview

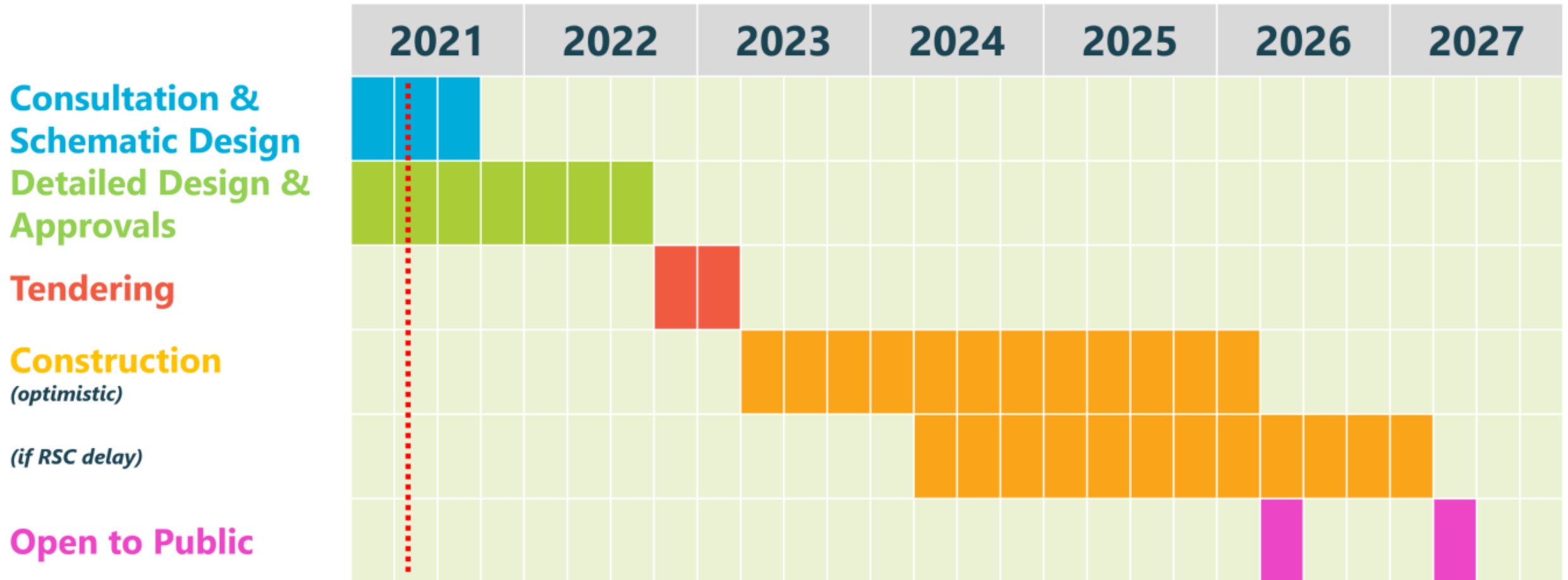
Current Site Extents



About the Project

- Key Components as identified by the 20-year Parks & Recreation Facilities Master Plan (Council funding of this centre is based on the direction in the FMP):
 - ✓ Double gymnasium
 - ✓ Aquatic component:
 - 25 m x 6 lane wide lap pool
 - Children's leisure pool
 - ✓ Multi-purpose spaces for various recreational programs & community access through the City's permit system
- Council Requirement - Net Zero Emissions (Energy)
- Other Considerations:
 - Heritage preservation requirements, as determined by the City's Heritage Preservation Services
 - Compatibility with rail line safety setbacks
 - Working with Indigenous Communities and Treaty Holders to determine how to research and recognise historic and ongoing presence of Indigenous peoples on the land

Schedule (estimated)

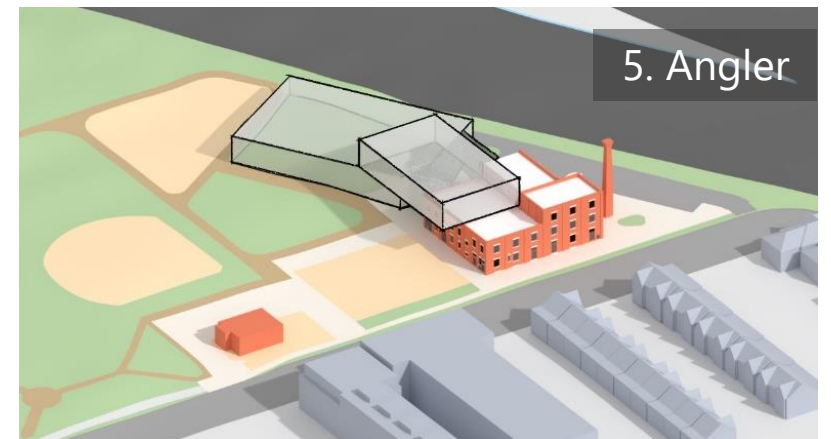
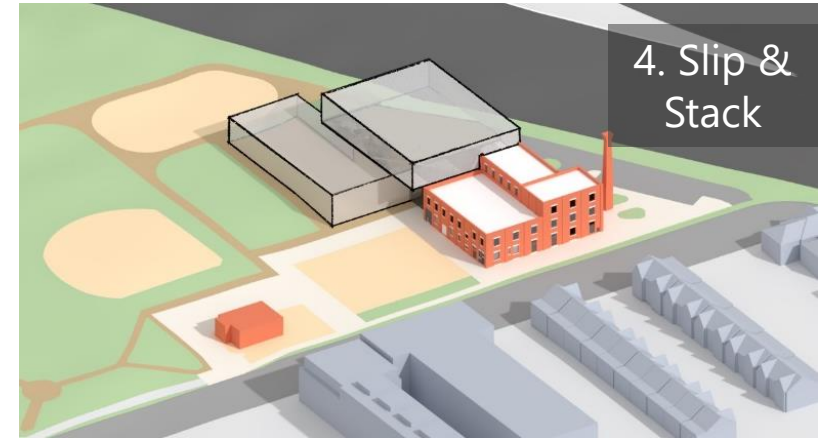
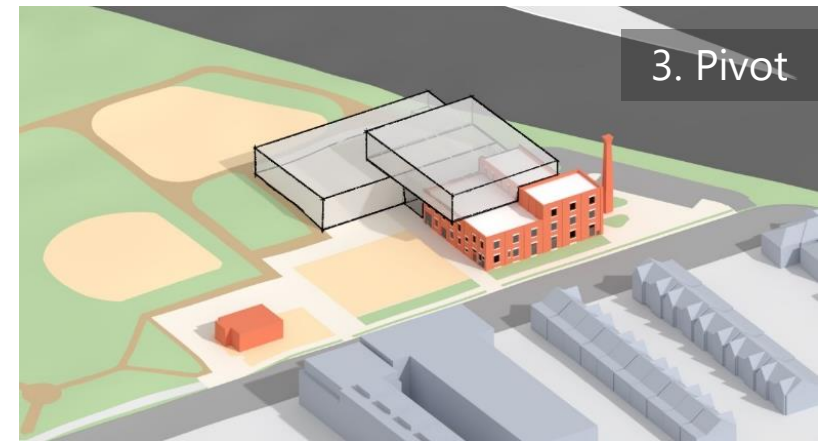
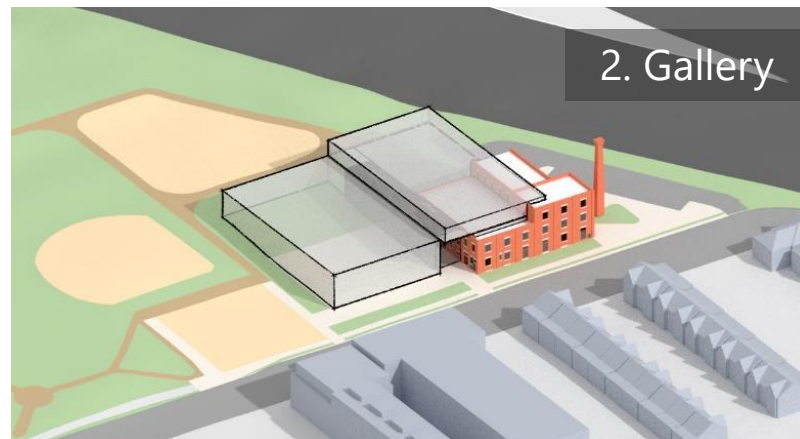
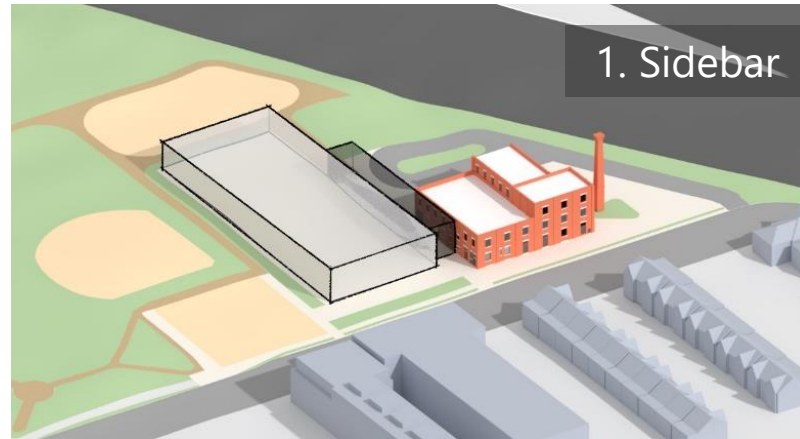


What We Heard: Public Engagement on the Site Design Options

Site Design Options

Five site design options were presented.

Preference and feedback on each design were collected.



Comparison

- All site design options will:
 - Net Zero Emissions (Energy) building
 - Preserve significant heritage elements of the former Linseed Oil Factory, as required by Heritage Preservation Services
 - Include elements that recognise historic and ongoing presence of Indigenous peoples on the land (TBD through engagement)
 - Provide limited surface parking
 - Include the recreation spaces required to deliver full community recreation centre programming, as mandated by Council
- Site design option differences include:
 - Level of impact to existing park uses
 - Level of connectivity of the building to the park
 - Building's relationship to & location of a Town Square
 - Location of multi-purpose rooms (e.g. ground level or on upper levels)
 - Relationship between the building and the streetscape on Wabash Ave
 - Level of impact to the size of the existing Dogs Off-Leash Area
 - Impact to the Fieldhouse
 - Level of retention of the existing Linseed Factory building

City-Lead Public Engagement To Date

Phase 1: Project Introduction

- **Public Meeting** - July 10, 2018

Phase 2: Vision, Principles and Big Moves

- **Community Resource Group (CRG) Meeting 1** – September 16, 2020
- **Virtual Townhall** (public) – September 22, 2020
- **Virtual Small Group Discussions** (public) – September 28, 2020
- **Online Survey** - Sept 15 to October 5, 2020
- **CRG Email Confirmations/Revisions** - April 2021, 2021

Phase 3: Site Design Options We're here

- **CRG Meeting 2** - April 27, 2021
- **Virtual Public Meeting** – May 11, 2021
- **Online Survey** – May 5 to May 31, 2021 - Over 1,000 respondents

Key Feedback – CRG Meeting, April 27

- **The five site design options are on the right track.**
- **Mixed preference on the design options** – some preferred Sidebar and Gallery, others preferred Pivot, Slip & Stack, and Angler.
- **Appreciate the amount of multi-purpose space**, especially from an equity and inclusion perspective.
- **Parking for the new centre is important.**
- **Prioritize airflow and access to natural light.**
- **Explore opportunities to use the roof space.**
- **Be clear that the same program space is available in each option.**

Key Feedback – Virtual Townhall, May 11

- **Most support for Angler, followed by Pivot** – these options have the smallest footprint and therefore least impact on the existing park.
- **Reduce the carbon impact and incorporate green space and natural elements** into the design.
- **Acknowledge and celebrate Indigenous history and culture** in the design and architecture.
- **Mixed opinions on parking.**
- **Questions about level of retention of existing Linseed Oil Factory building.**
- **Appreciate that the site design options reflect public feedback and the concerns raised by the community.**

Key Feedback – Preliminary Online Survey Feedback

Designs	Overall Scores				Approval ¹ of Criteria							
	Overall Approval Score	Ethelo Score	Support	Conflict	Connectivity to the Park	Impact on Fieldhouse	Impact on Park Uses	Impact to Dogs Off-Leash Area	Multi-Purpose Rooms Location	Relationship & Location of Town Square	Relationship to Wabash Ave	Retention of Existing Building
Angler	85%	82%	81%	31%	78%	73%	75%	49%	64%	81%	74%	77%
Pivot	79%	77%	76%	31%	58%	61%	62%	50%	46%	68%	55%	66%
Slip & Stack	58%	58%	59%	38%	35%	48%	32%	21%	33%	51%	42%	52%
Central Gallery	40%	46%	45%	39%	23%	18%	26%	34%	29%	20%	26%	41%
Side Bar	27%	37%	38%	32%	17%	17%	14%	19%	27%	17%	22%	47%

^[1] Approval is the percentage of people who gave a positive vote rather than a neutral or negative vote. Approval above 50% is a traditional "majority"

^[2] Ethelo score is a measure of the overall strength of the decision, considering both support (higher is better) and conflict (lower is better).

^[3] Support is the average value of the votes, where the value of a totally opposing vote is 0 and a totally supportive vote is 100

^[4] Conflict is a measure of the level of disagreement in a group. Higher conflict scores represent internal resistance and risk of failure.

Key Feedback – Preliminary Online Survey Comments

Top Recurring Sentiments

- Impact the park and its uses as minimally as possible. Build up instead of out.
- Minimize or eliminate any reduction in the size of the dog off-leash area.

Other Key or Recurring Sentiments

- Ensure the new building relates well to the Linseed Building and the park
- Some want the fieldhouse and town square retained, others prefer their removal/replacement/renovation
- Some want less parking, others want it put underground, and others prefer more parking
- Ensure the new centre and surrounding park are physically accessible
- Ensure the farmers' market can continue
- Do not prioritize settler history over Indigenous history

Internal Evaluation

- Staff Technical Advisory Committee (TAC) prefer the Angler option, considering:
 - Compact footprint
 - Connection to and impact on the park
 - Provision of a Town Square
 - Support for community activities at-grade
 - Respects historical façade
(required to be maintained)
- Architect & Engineer Analysis preferred the Angler or Slip & Stack focusing on the following elements:
 - Structural
 - Mechanical/Electrical
 - Landscape
 - Acoustics

- Focused on how to make the new centre welcoming for youth:
 - In-class workshops this week
 - Workshop with the City's local youth group in late June

What We Heard: Indigenous Engagement

Project Vision

The Wabash Community Recreation Centre will be a space where all community members, regardless of income, race, gender, ability, age, culture, housing status, religion, or spoken language can come together, feel welcome, feel belonging, and participate in recreation and community-building activities.

The social and community-building activities of both the Town Square and Field House are fundamental to the success of the new Centre and any physical changes to these features will continue to support these activities.

The Centre will be physically accessible to all and prioritize environmentally sustainable design by targeting Net-Zero emissions and energy use.

The design will recognize the site's history, from the historic and enduring presence of Indigenous Peoples on the land to the recent industrial history.

Multi-season use, multi-functionality, and integration between indoor and outdoor spaces will be considered throughout the design to ensure community members have access to flexible and functional spaces they can use for a wide range of activities throughout the year, and as the needs of the community change over time.

Design Principles

1. Physically design spaces to **support equitable access for all people**, regardless of income, race, gender, ability, age, culture, housing status, religion, or spoken language, and to **ensure all feel welcome, a sense of belonging**, and do not experience barriers to participation or access.

2. Recognize the site's history and preserve elements of built and cultural heritage. **Research and recognize Indigenous presence on the land; consult with Indigenous Peoples on how this is best accomplished.** Collaborate with Heritage Preservation Services to retain and restore the chimney and principle facades, and any significant heritage elements of the Linseed Oil Factory as required.

Indigenous Engagement and Consultation

- Engagement & Consultation To-date:
 - Present to and gather feedback from the Toronto Aboriginal Support Services Council (TASSC) (*April*)
 - Meeting 1 with the Local Indigenous Advisory Circle, including two local Indigenous members and five representatives from Treaty Holders, Mississaugas of the Credit First Nation (*May*)

Next Steps – Indigenous Engagement and Consultation

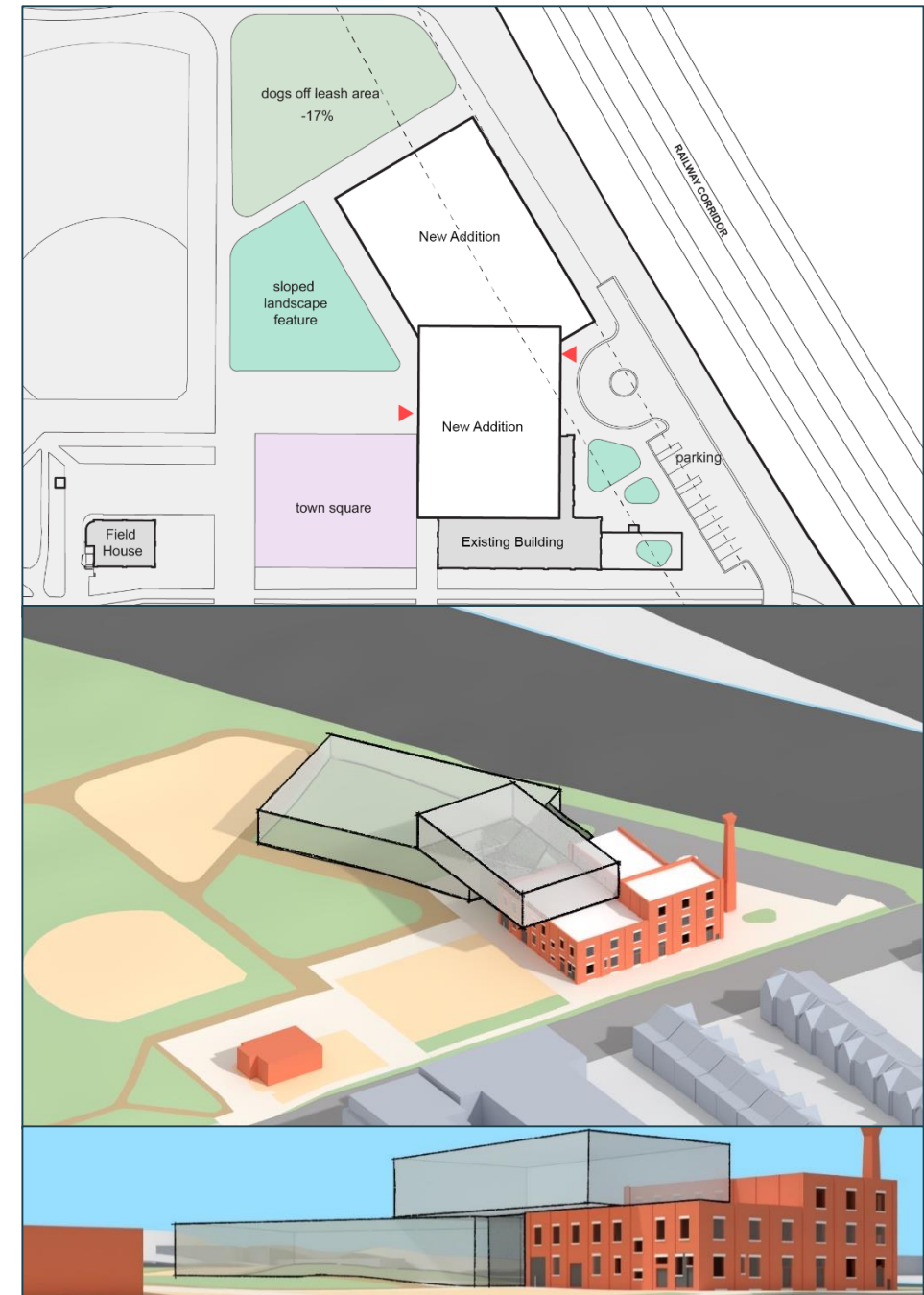
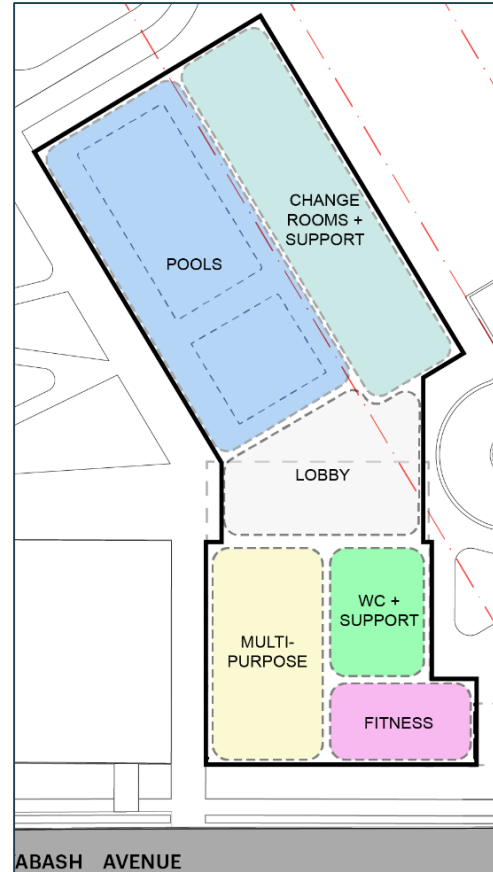
- **Upcoming consultation and engagement will include:**
 - Present to and gather feedback from ENAGB Indigenous Youth Agency
 - Host additional Local Indigenous Advisory Circles
 - Design-focused meeting with the Mississaugas of the Credit First Nation
- **Review wider PFR processes for Indigenous Engagement and Consultation (not project-specific):**
 - Identify what changes can be made (e.g. new standards/processes) to ensure meaningful and respectful engagement with Indigenous communities, both Treaty Holders and Urban Indigenous Communities. This will require further consultation, beyond the Wabash CRC project.
 - Improve research on the Indigenous History of lands PFR projects are on, and involve Indigenous Peoples in this research. This will require further consultation, beyond the Wabash CRC project.

Emerging Design Preference

Emerging Design Preference

So far, the Angler is emerging as a preferred option through multiple sources of feedback.

Additional engagement and consultation with Indigenous communities is necessary before a design option is selected.



Next Steps

Next Steps

- Phase 3 public and CRG meeting summaries and the online survey summary will be posted online.
- Continue Indigenous engagement and consultations.
- The project team will share design direction later this summer.
- The next phase of engagement will focus on the interior layout of the building (TBC Fall 2021). Engagements will include:
 - Meeting with the CRG
 - Virtual public meeting
 - Online survey
 - Youth engagement workshops
 - Indigenous Consultation and engagement
- Presentation to:
 - Design Review Panel
 - Heritage Preservation Services
 - Metrolinx
- Last phase of engagement TBC Winter 2021: Present preferred design

Discussion

What are your thoughts on the emerging preferred option?

Do you see any major issues moving forward/
other factors we need to consider?

Do you have any other advice for the project team?

Next Steps

Next Steps

- Phase 3 public and CRG meeting summaries and the online survey summary will be posted online.
- Continue Indigenous engagement and consultations.
- The project team will share design direction later this summer.
- The next phase of engagement will focus on the interior layout of the building (TBC Fall 2021). Engagements will include:
 - Meeting with the CRG
 - Virtual public meeting
 - Online survey
 - Youth engagement workshops
 - Indigenous Consultation and engagement
- Presentation to:
 - Design Review Panel
 - Heritage Preservation Services
 - Metrolinx
- Last phase of engagement TBC Winter 2021: Present preferred design

Thank you!

