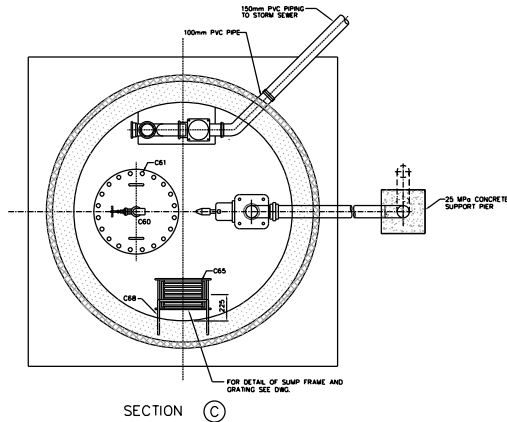
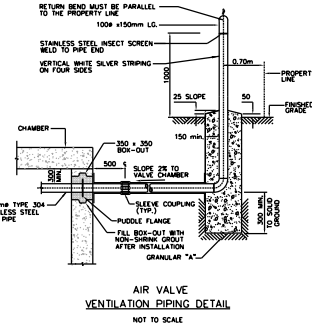


PLAN



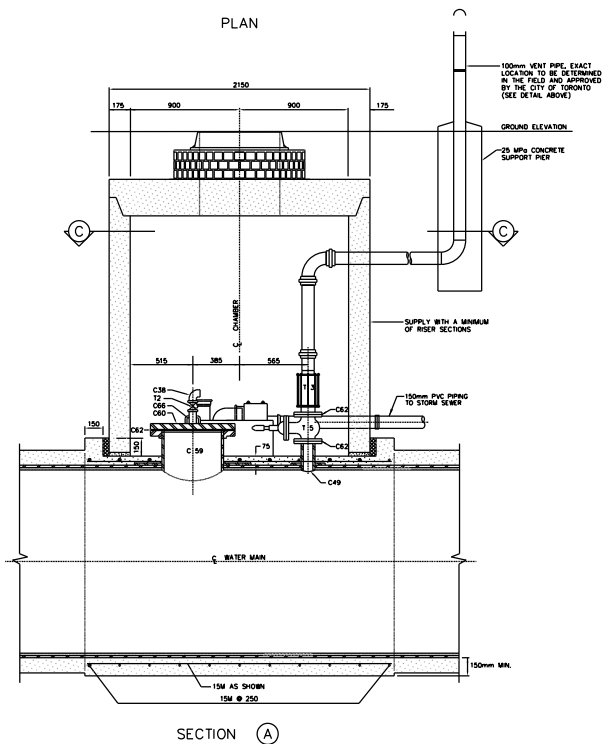
SECTION C



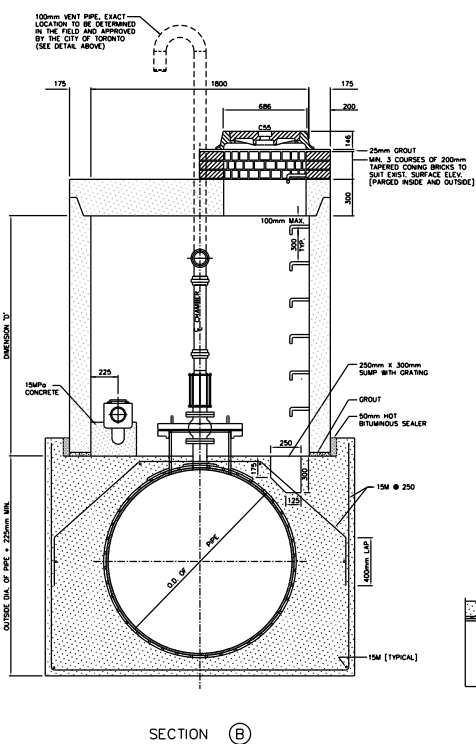
AIR VALVE VENTILATION DETAIL  
NOT TO SCALE

NOTES

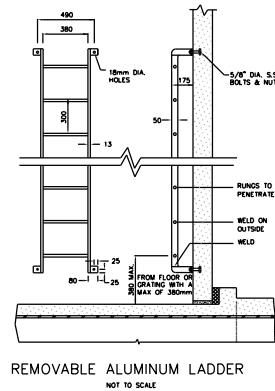
- 1 PRECAST MAINTENANCE HOLE ASTM C478 RUBBER GASKET JOINTS.
- 2 PROVIDE SUMP PIT WITH GRATING IN ALL CHAMBERS AND SLOPE CHAMBER FLOOR TO SUMP 10mm PER METRE.
- 3 DRAIN CONNECTION TO SEWERS TO BE MADE BY THE CONTRACTOR, UNLESS OTHERWISE STATED IN THE GENERAL SPECIFICATIONS.
- 4 FOR CHAMBERS UNDER 2 METRES IN DEPTH, STANDARD STEPS MAY REPLACE THE LADDER.
- 5 STANDARD STEPS IN THE CHIMNEY TO BE OF THE REMOVABLE TYPE, AND NOT TO PROJECT MORE THAN 125mm BEYOND WALL.
- 6 CHAMBERS DEEPER THAN 4 METRES FROM SURFACE TO FLOOR, ONE OR MORE SAFETY GRATINGS SHALL BE INSTALLED. FOR GRATING DETAILS SEE DWG.
- 7 ALL ALUMINIUM SURFACES CONTACTING CONCRETE TO RECEIVE ONE COAT OF BITUMINOUS PAINT.
- 8 BACKFILLING TO BE BROUGHT UP EVENLY IN 300mm LAYERS AROUND CHAMBER.
- 9 SET BOTTOM SECTION OF CHAMBER ON 13mm STEEL SHIMS LEVEL AS REQUIRED AND COMPLETELY FILL VOID WITH APPROVED NON-SHRINK GROUT.
- 10 ALL JOINTS TO BE MORTARED ON OUTSIDE AND INSIDE.
- 11 PRIOR TO PLACING PRE-CAST ROOF SLAB ON CHAMBER THE FABRICATED MAINTENANCE HOLE COVER [C60] SHALL BE LOWERED INTO THE CHAMBER AND BE STORED AND PROTECTED UNTIL ITS INSTALLATION AFTER COMPLETION OF CEMENT MORTAR LINING.



SECTION A



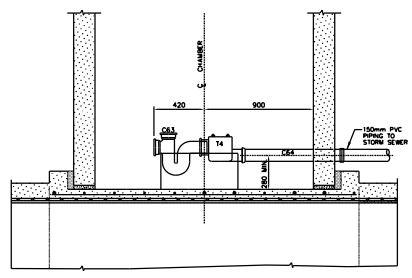
SECTION B



REMOVABLE ALUMINUM LADDER  
NOT TO SCALE



SECTION THROUGH LADDER RUNG  
FULL SIZE



SECTION SHOWING ELEVATED DRAIN

MATERIAL LIST / PER CHAMBER

MARK No.	SUPPLIED BY CONTRACTOR
12	1-50mm BALL VALVE [SCREWED] (SS BODY, SS BALL & TEFLON SEAT)
13	1-100mm VENT-Q-MAT SERIES RIB. AIR RELEASE VALVE [FLANGED] OR EQUIVALENT
14	1-100mm BACKWATER CHECK VALVE
15	1-100mm GATE VALVE [FLANGED]

MARK No.	SUPPLIED BY CONTRACTOR
C38	1-50mm SS304, Sch 40 STREET ELBOW
C49	1-FABRICATED S.S. 100mm HOZLE
C59	1-FABRICATED S.S. MAINTENANCE HOLE FRAME
C60	1-FABRICATED S.S. MAINTENANCE HOLE COVER
C61	20-M30 x 125mm SS BOLTS & NUTS
C61	16-M16 x 75mm SS BOLTS & NUTS
C61	CNCH ANCHORS WITH M16 DIA. S.S. BOLT & NUT
C62	1-MAINTENANCE HOLE GASKET [FILL FACE, ONE PIECE]
C62	2-100mm GASKETS [FILL FACE, ONE PIECE]
C63	1-100mm TRAP WITH CLEANOUT & COVER
C64	1-100mm PVC PIPING AND 1-100mm TO 100mm REDUCER
C65	1-SUMP FRAME & GRATING [ALUMINIUM]
C68	STANDARD ALUMINIUM STEPS OR LADDERS
C39	1-13mm MALE INLET SINK FAUCET, ROUGH BRASS WITH HOSE END, EMCO #3710 OR EQUIVALENT
C66	1-50mm x 100mm L.C. SS304, Sch 40 SUPPLE. WIREMESH, TAPERED ENDS
C55	1-CAST IRON, SQUARE FRAME WITH CIRCULAR COVER AND PLUG FOR VALVE CHAMBERS AS PER SP10-402.010

• SUPPLY ONLY IF REQUIRED FOR DETAILS OF C48, C50 AND C50 SEE DWG.

CHAMBERS

CHAMBER No.	CHAMBER	SURFACE ELEV.	WATERMAIN & ELEV. IN METRES	DIFFERENCE IN ELEV.	T/ DIAL.	DRAIN TO BE INSTALLED	DIRECTION OF DRAIN OUTLET	COVER LOCATION	FOR LOCATION REFER TO PLAN No.



Toronto Engineering & Construction Services

Title

Subtitle1  
Subtitle2

PRECAST 100 mm AIR VALVE AND M.H. CHAMBER

GENERAL MANAGER, TORONTO WATER	DIRECTOR, Design and Construction Linear Underground Infrastructure
CHIEF ENGINEER AND EXECUTIVE DIRECTOR, Engineering & Construction Services	MANAGER, Design and Construction Linear Underground Infrastructure

DESIGN	Design	DRAWN	Drawn	CHECKED	Checked	CONTRACT No. X-X
SCALE	SCALE	DRAWING NUMBER	T-1110.07-5	SHEET X OF X		
DATE	DATE					

No.	DATE	REVISIONS	INITIAL	SIGNED