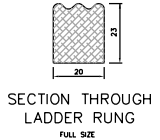
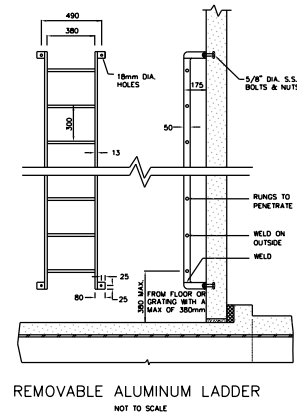
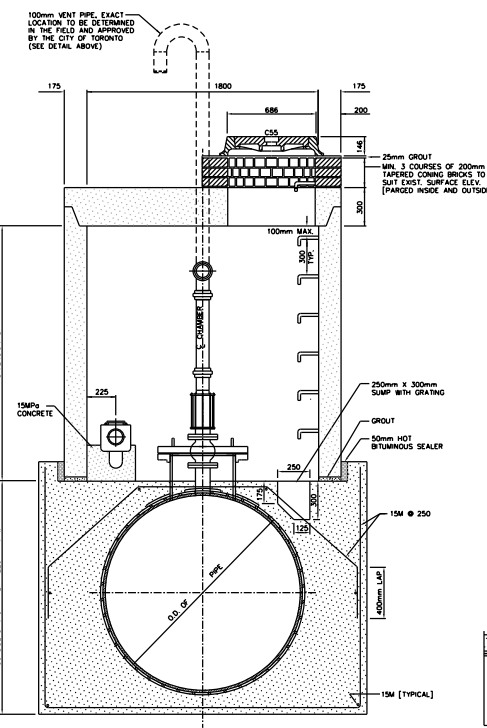
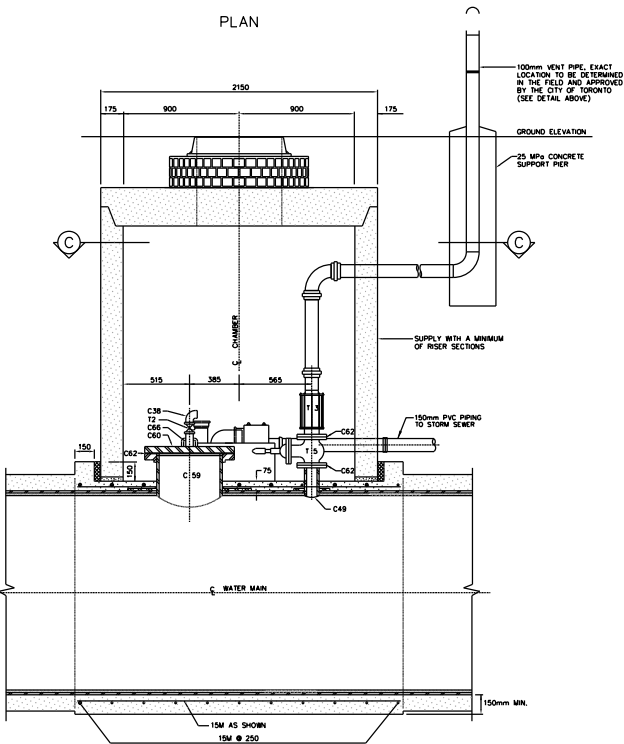


PLAN

SECTION C

AIR VALVE VENTILATION PIPING DETAIL



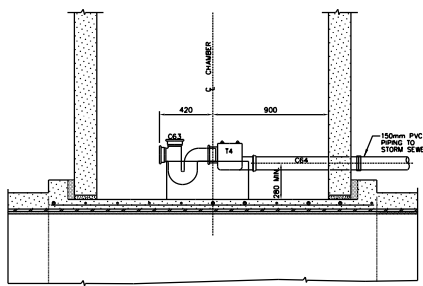
MATERIAL LIST / PER CHAMBER

MARK No.	SUPPLIED BY CITY OF TORONTO
T2	1-50mm BALL VALVE [SCREENED] (BRASS BODY/SS BALL & TEFLOON SEAT)
T3	1-100mm VENT-O-MAT SERIES REB AIR RELEASE VALVE [FLANGED] OR EQUIVALENT
T4	1-100mm BACKWATER CHECK VALVE
T5	1-100mm GATE VALVE [FLANGED]

MARK No.	SUPPLIED BY CONTRACTOR
C38	1-50mm BRASS STREET ELBOW
C49	1-FABRICATED S.S. 100mm NOZZLE
C59	1-FABRICATED S.S. MAINTENANCE HOLE FRAME
C60	1-FABRICATED S.S. MAINTENANCE HOLE COVER
C61	20-430 x 125mm BOLTS & NUTS
C61	16-M16 x 75mm BOLTS & NUTS
C61	ONCH ANCHORS WITH 1/8 DIA. S.S. BOLT & NUT
C62	1-MAINTENANCE HOLE GASSET (FULL FACE ONE PIECE)
C62	2-100mm GASKETS [FULL FACE, ONE PIECE]
C63	1-100mm TRAP WITH CLEANOUT & COVER
C64	1-100mm PVC PIPING AND 1-150mm TO 100mm REDUCER
C65	1-SUMP FRAME & GRATING [ALUMINUM]
C68	STANDARD ALUMINUM STEPS OR LADDERS
C39	1-13mm MALE HALET SINK FAUCET, ROUGH BRASS WITH HOSE END, ENCO #3710 OR EQUIVALENT
C66	1-50mm x 100mm LG. HEAVY DUTY BRASS SUPPLE, WREATHED, TAPERED ENDS
C65	1-CAST IRON SQUARE FRAME WITH CIRCULAR COVER AND PLUG FOR VALVE CHAMBERS AS PER OFSD-462,010

• SUPPLY ONLY IF REQUIRED FOR DETAILS OF C48, C59 AND C60 SEE DWG.

REMOVABLE ALUMINUM LADDER



SECTION SHOWING ELEVATED DRAIN

SECTION A

SECTION B

CHAMBERS

CHAMBER No.	CHANGAGE	SURFACE ELEV.	WATERMAIN % ELEV. IN METRES	DIFFERENCE IN ELEV.	7\"/>				



Toronto Engineering & Construction Services

GENERAL MANAGER, TORONTO WATER	DIRECTOR, Design and Construction Linear Underground Infrastructure
EXECUTIVE DIRECTOR, Engineering & Construction Services	MANAGER, Design and Construction Linear Underground Infrastructure

Title	
Subtitle1	
Subtitle2	
PRECAST 100 mm AIR VALVE AND M.H. CHAMBER	
DESIGN	Design
DRAWN	Drawn
CHECKED	Checked
CONTRACT No. X-X	
SCALE	SCALE
DATE	DATE
DRAWING NUMBER	T-1110.07-5
SHEET X OF X	

No.	DATE	REVISIONS	INITIAL	SIGNED